

The Buzz

22nd May 2026



Learning and Achieving Through Love,
Courage and Respect

Dear parents, carers and children,

We had a Golden Worship full of external awards this morning. All the children have been very busy out of school. I am often surprised by the different certificates and medals that are celebrated, but none more so than this morning when Alice shared her certificate that she had received for her sponsored cartwheel! There were lots of medals on display, as well as certificates, trophies, shields and a magnificent engraved silver plate. Well done to all the children this morning.



We were greeted by a plethora of purple this morning, in aid of Juvenile Arthritis. Oscar explained to the school what the condition is, and he then also led a presentation for Ivy Bee class. We raised an amazing £96.35 for the charity! Well done and thank you.



Thank you, also, to everyone who brought in cakes and other baked goods for the BSA's refreshment stall at Northcourt Open Gardens on Sunday. They all look delicious! I look forward to seeing you there, if you can make it, in the glorious sunshine.

Class news



"On Tuesday this week, Honey Bee class managed to dodge the showers and enjoyed a lovely visit to the Royal IW Agricultural Show Education Day. We began with a tractor and trailer ride to the woodland area to meet Luke the Forester who showed us the axes and tools that he uses in his work (and also his first aid kit!). We found out about trail biking opportunities on the island, made butter with Briddlesford Farm Dairy and met and learned about cows, pigs, sheep, a pony, chickens, llamas and alpacas. We also had fun taking part in Hobby Horse relay races (obviously I had to join in with the gallop to make an even number!)." *Mrs Northard*



"Today in Art and Design, Bumble Bee children worked on their colour mixing skills. Their challenge was to make different shades of green, using the primary colours blue and yellow. They all did superbly and are now colour mixing experts! They also finished their recounts of our trip to the Portsmouth Aquarium. There was some great use of time connectives, adjectives and conjunctions. Well done, team Bumble Bee!" *Miss Sztypuljak*



I hope everyone has a lovely Bank Holiday weekend and half term break.

With best wishes,

Mrs Lennon and the Brighstone team



Collective Worship

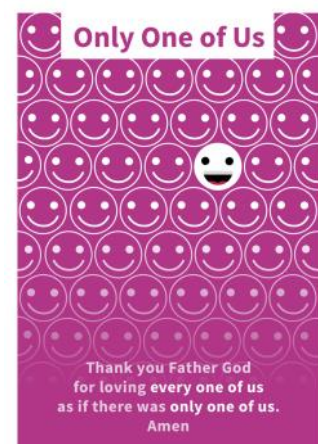
This half term, the theme is The Parables of Jesus. This week, we have been learning about The Parable of The Lost Sheep. The value is joy.



Jesus told his disciples another parable: "If any of you has a hundred sheep, and one of them gets lost, what will you do? Won't you leave the ninety-nine in the field and go and look for the lost sheep until you find it? And when you find it, you will be so glad that you will put it on your shoulder and carry it home. Then you will call in your friends and neighbours and say, 'Let's celebrate! I've found my lost sheep.'"

We watched a short animation of this parable, and matched the shepherd's emotions to each part of the story. The emojis spelled out the word 'joyful'.

We discussed how the Parable of the Lost Sheep is often called the Parable of the Good Shepherd because just as the shepherd cares for every one of his sheep, so Christians believe that Father God, like the shepherd, cares for every one of his children.



Inclusion

Welcome to our inclusion section! Each week, we share a Makaton sign and Widgit symbol, as part of our inclusive ethos.

This week, our word is:

holiday

<https://www.youtube.com/watch?v=ZCYb0dMHVgc>

Makaton sign	Widgit symbol
	

Poetry Corner

A Little Sunshine

A little sunshine,
warm and bright,
Fills the sky with golden
light.

It makes the flowers
bloom and grow,
And helps the grass
reach up high and low.

Let's go outside and play
today,
Enjoy the sunshine,
in its golden rays.
With open hearts,
let's laugh and run,
Beneath the happy,
shining sun.



Reading Recommendations

Each week, we include a book recommendation from a child and/or adult.

This week, Noah recommends Messi by Simon Mugford and Dan Green.

I recommend this book because, if you don't know a lot about football, you can read some of these books and find out what Messi and different players do.

On some pages, there are jokes about the player, and the rivals. Messi's rival is Ronaldo. They make jokes like "Don't tell Ronaldo that Messi's better!"

It's a really fun book, because sometimes there are quizzes at the back that teach you about the players, with questions like how many trophies they've won. I would like to be a professional footballer. Maybe one day there will be a book about me!



Safeguarding

If you have a concern about a child you can call the police on 999 if you feel they are at risk of immediate harm.

Contact the NSPCC Helpline

If you have any concerns at all about a child's safety or wellbeing, don't hesitate to contact us.

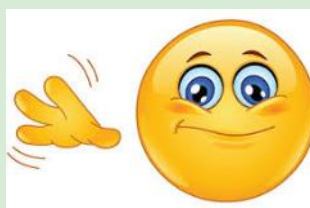
Call us or email help@nspcc.org.uk

0808 800 5000

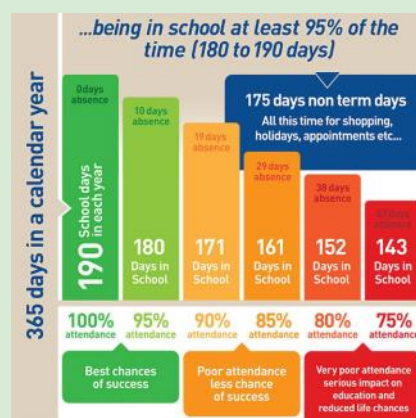
Find out more

You can contact the NSPCC:
Or call children's services 01983 823435

Attendance Matters!



Week Commencing 18th May
(National attendance target: 95%)
Actual Attendance: 94.42%
Late marks this week: 6



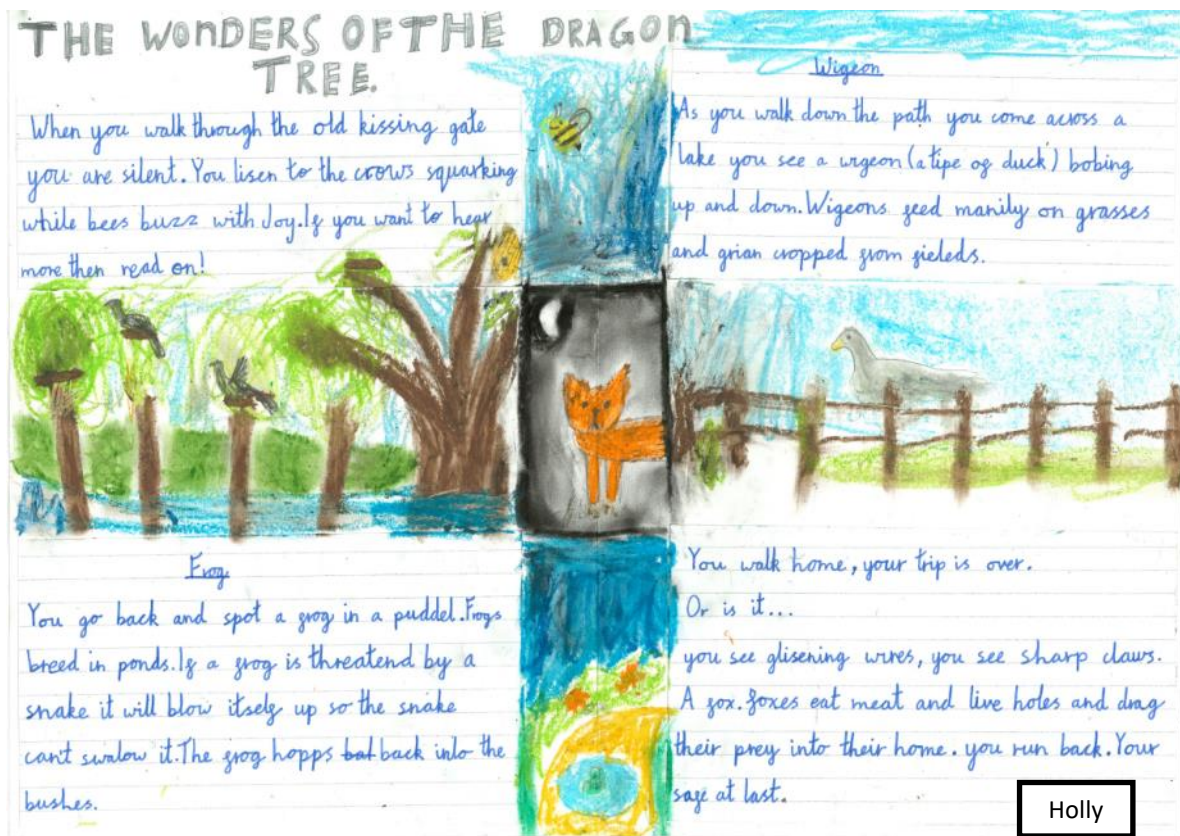
<https://www.nhs.uk/live-well/is-my-child-too-ill-for-school/>



Honey Bee Class

The Wonder Garden

Honey Bee class have been reading The Wonder Garden in English. Following a visit to the Dragon Tree, they have created descriptive information writing about it, in the style of The Wonder Garden. Here is a selection.



Introduction

There's a legend that thousands of years ago Brightstone was under threat by a dragon, until a Month of Mayling & Justice Saint taught or rather picked up a staff made of hazel & winged to the beast, it instantly turned to wood & the village was saved.

The matresix oak has fallen slightly but its roots are still strong & children still play on it.

There's lots of nature here as it is protected. Wander through the gate & find your first plant!

Glowworm

If you come at night you come to a place where you may notice orange glowing spots under the leaves, let them up, you could find a glowworm, are bottles, the female makes an orange glow to attract males.

Barn owls

Barn owls live in caves or holes in trees because it is the perfect place to stay dry. They make a call that goes ho ho ho ho ho ho ho ho ho ho. Unlike humans barn owls are nocturnal and means they sleep in the day and hunt at night.

The Himalayan Bollsaw

You think it's ok but it's not ready to be. The Himalayan Bollsaw is a parasite which means it kills any plant in its path anything in its way is ranted.

Shield bug

Shield bugs have a hard shield shaped covering over their thorax, but shield bugs bright yellow shield makes it easy to see in the wild, when danger comes it stays covering wings.

The mythical wonders of the Dragon tree

As you step through the little wooden kissing gate from where your stroll looks like your adventure never ends. So to come here read this page and listen to all the information, find out myths and stories of the famous dragon tree.

The myths of the legendary Dragon tree

The dragon tree has several different stories but this is the one I believe... There once was a village called Brightstone but it was attacked by a fiery red dragon. One day a young girl wandered into the beast's den. Then there was a dark shadow shimmered the top of her head - she was surrounded - the dragon had paws blocked the exit with his scaly, whip like tail. She squeaked, the dragon's icy blue eyes snapped open. He roared and opened his mouth ready to swallow her whole, but just then a brave knight galloped in on his trusty grey steed and jumped the dragon's scaly tail. Then he distracted the dragon and made him move his tail leaving the exit clear. The knight yielded at the girl to run so that what she did. Silver is a metal that if it cuts through something it turns it to wood. The knight cut the dragon in the chest and it instantly turned it to wood. So from that day the village has been safe because of that brave, mighty knight who risked his life for the village.

on walls will just hear the call of the beautiful Black Bird. They are friendly worms and small bugs so they can survive. When the sun is bright they fly high above your head collecting sticks for their nests.

As you walk through the gateway you have to tread carefully, because there might be adders waiting to slither across the path. Adders will not attack unless you hurt or threaten them when they might attack.

Lady birds

Lady birds are quite common bugs but they're some fascinating facts about them. Did you know that however many spots they have is how old they are.

Bethan

The Magical tree!

Let me take you on a magical adventure somewhere deep in the forest, somewhere beautiful and wondering- the ~~the~~ Dragon Tree. Follow along a big black path and you see a waterfall slowing down, a stream sapphire colour.



Butterflies
Millions of butterflies create a swirling cloud of colour. Scarlet red, blue, orange and green but there's many more. All of them together make the sky shine.

Ladybirds
These ladybirds when they have babies the female looks for a leaf with lots of greenflies on it to lay her eggs because when the eggs hatch they need lots of food.

Sky B

The Dragon Tree

Step through an ancient kissing gate and feel the wonders of nature. You step across a bridge above rushing water. After you have passed the water, you look around to see a golden path leading to the mystical, sacred Dragon Tree.

Spiders
Spiders spin webs to catch other insects and then they feast on them. First they wrap them up with webs, then they eat them. They have eight legs and two pinners.

Bees
Bees dance because they are communicating with their friends or they are warning the hive of danger. They have a needle in the back of them, so when it's in danger it stings the enemy.

Dragonflies
A dragonfly's eyes can spot tiny prey such as midges and mayflies. Their wings flap very fast, so you can barely see them.

Nathan

THE WONDERS OF THE DRAGON TRAIL

As you step through the antshoint kissing gate you step onto a beautiful golden path you see all types of wild life as you walk along.

From a busy Brightstone Village into this peaceful forest where all of the wild life of the Dragon Tree lives. You look at all of the ^{how beautiful} it is, you never thought anything could be this wonderful.

You see crows as they protecting their eggs with their terging beed so you walk on a little bit more you see a glow sheems as it hovers above the rocks, a fish appears with its colorful scales that help it to swim it gets camouflaged in the streams, and it goes away somever els.



When you turn around you see something glittering in the ground you notice it's a shield bug, with its amered back the color is like steel. It protects its self with it so it dosent get eaten buy anything out there.

As the leags tumble down in the evening air. The trees glow with the wined luce. The sky turns dark so you start to pull to go home. You see a owl search for its pray but you may here its hoot but not its flight. There hed can tern gully around so they can look around better who when there searching for there pray.



Help us buy a new stage!

Brighstone CE Primary Governors are fundraising to replace the old school stage. Encouraging every child to find their voice and thrive in their own unique way.



You can support us by putting a blue token in the box in Tesco Freshwater.



Stronger Starts.

County Press

Help Your Local School WIN EQUIPMENT!

Get ready to participate in our exciting token collect competition and help your school stand a chance to win amazing prizes.

Collecting Tokens Here

Drop your tokens to reception!

Collect tokens printed in the County Press from Monday 11th May until Friday 3rd July 2026.



Terms and Conditions: Newsquest terms and conditions apply. Visit Newsquest Prize Competition Rules and Newsquest Privacy Policy for more information. No Photocopies Accepted: Only original tokens will be counted. Only registered schools can enter, and no two schools can combine their token collections. Prizes are non-transferable and no cash alternative is available.



The Brighstone School Association now receive 30% commission from Stikins every time you buy your new name labels.

Quote our number 2721 when you place an order. A great way to keep your child's belongings safe and to support the school!

<https://www.stikins.co.uk>

Parents,
Family members
& friends of *Brighstone Primary School*
Does your place of work offer the Match Funding Scheme?

Get in touch with us if your employers could help our BSA fundraisers via email at brighstoneschoolassoc@gmail.com

Like Our Pages!



Facebook & Instagram

**Search for
Brighstone School
Association**

It's never too late to keep up with our latest news!

BSA Astra Recycling Clothing Bank

We take...

Clothes,
Shoes,
Bed Linen,
Accessories
(Such as
belts, hats
& handbags)
Soft Toys



We can't take...

Duvets or
Cushions,
Off Cuts,
Carpet or
Curtains

Located in school entrance car park

School Dinners

Children in **Year R, 1 and 2** are entitled to a 'universal' free school meal every day.

Children in Years 3-6 are charged at **£3.35** per day.

Please note the dates to see which week to look at.



ARE YOU A WINNER?

Every Thursday, check under your plate for a winner sticker!

1. Clear your plate
2. Check if you have a sticker
3. If you do, show a member of kitchen staff
4. Collect your prize

Chartwells **Good luck!**

		MONDAY	TUESDAY	WEDNESDAY	THURSDAY	FRIDAY
HOT DISHES	OPTION 1	Cheese and Tomato Pizza with Potato Wedges 🌱	Beef Bolognese with Wholewheat Pasta 🍷🍷	Roast Chicken with Roast Potatoes and Gravy 🍷	I.O.W Pork Sausages with Mashed Potato and Gravy	Fish Fingers with Chips
	OPTION 2	BBQ Vegetable Wrap with Wholegrain Rice 🌱🍷🍷	Vegetarian Bolognese with Wholewheat Pasta 🌱🍷🍷	Roast BBQ Quorn with Roast Potatoes and Gravy 🌱	Macaroni Cheese 🌱🍷	Quorn Dippers with Chips 🌱
	OPTION 3	Tomato Pasta Fresh, homemade Tomato Sauce with Wholewheat Pasta 🌱🍷	Tomato Pasta Fresh, homemade Tomato Sauce with Wholewheat Pasta 🌱🍷	Tomato Pasta Fresh, homemade Tomato Sauce with Wholewheat Pasta 🌱🍷	Tomato Pasta Fresh, homemade Tomato Sauce with Wholewheat Pasta 🌱🍷	Tomato Pasta Fresh, homemade Tomato Sauce with Wholewheat Pasta 🌱🍷
HOT DISHES ARE SERVED WITH TWO VEGETABLES AND FRESHLY BAKED BREAD						
DELI	OPTION 4	Jacket Potato Choice of either Baked Beans, Cheese or Tuna 🌱	Baguettes Choice of either Ham, Cheese or Tuna 🌱	Jacket Potato Choice of either Baked Beans, Cheese or Tuna 🌱	Baguettes Choice of either Ham, Cheese or Tuna 🌱	Jacket Potato Choice of either Baked Beans, Cheese or Tuna 🌱
DELI DISHES ARE SERVED WITH MIXED SALAD						
DESSERT		Chocolate Brownie 🌱	Oat Cookie 🌱	Strawberry Shortcake Mousse	Vanilla Slice with Melon Wedges 🌱	Chocolate Ice Cream

W/C: 13/04/2026, 04/05/2026, 01/06/2026, 22/06/2026, 13/07/2026

SPRING/SUMMER 2026 MENU **WEEK 1**

BAKED POTATOES SERVED DAILY With a choice of toppings 🍷🍷

AVAILABLE DAILY Fresh fruit, salad, yoghurt and water

🌱 Vegetarian 🍷 Vegan 🍷 Oily Fish 🍷 Fruity! 🍷 Wholegrain 🍷 Nutritionist's Choice

Chartwells Schools

Our menu is subject to change. Please be assured that all notified medical diets and allergy requirements will be safely catered for.

SPRING/SUMMER 2026 MENU

WEEK 2

W/C: 20/04/2026, 11/05/2026, 08/06/2026, 29/06/2026, 20/07/2026

		MONDAY	TUESDAY	WEDNESDAY	THURSDAY	FRIDAY
HOT DISHES	OPTION 1	Cheese and Tomato Pizza with Potato Wedges 🍷	Beef Burger with Potato Wedges	Roast Gammon with Roast Potatoes and Gravy	Chicken and Vegetable Korma with Wholegrain Rice 🍷	Fish Fingers with Chips
		OR	OR	OR	OR	OR
	OPTION 2	Tex Mex Vegetable Fajita with Wholegrain Rice 🍷 🍷	Beany Vegetable Burger with Potato Wedges 🍷 🍷	Bean and Cheese Pastry Turnover with Roast Potatoes and Gravy 🍷	Macaroni Cheese 🍷 🍷	Quorn Dippers with Chips 🍷
	OR	OR	OR	OR	OR	
	OPTION 3	Tomato Pasta Fresh, homemade Tomato Sauce with Wholewheat Pasta 🍷 🍷	Tomato Pasta Fresh, homemade Tomato Sauce with Wholewheat Pasta 🍷 🍷	Tomato Pasta Fresh, homemade Tomato Sauce with Wholewheat Pasta 🍷 🍷	Tomato Pasta Fresh, homemade Tomato Sauce with Wholewheat Pasta 🍷 🍷	Tomato Pasta Fresh, homemade Tomato Sauce with Wholewheat Pasta 🍷 🍷
HOT DISHES ARE SERVED WITH TWO VEGETABLES AND FRESHLY BAKED BREAD						
DELI	OPTION 4	Jacket Potato Choice of either Baked Beans, Cheese or Tuna	Baguettes Choice of either Ham, Cheese or Tuna 🍷	Jacket Potato Choice of either Baked Beans, Cheese or Tuna	Baguettes Choice of either Ham, Cheese or Tuna 🍷	Jacket Potato Choice of either Baked Beans, Cheese or Tuna
	DELI DISHES ARE SERVED WITH MIXED SALAD					
DESSERT		Banana Oat Bite 🍷	Lemon Cookie 🍷	Caramel Mousse	Chocolate Brownie 🍷	Strawberry Ice Cream



BAKED POTATOES SERVED DAILY
With a choice of toppings 🍷 🍷



AVAILABLE DAILY
Fresh fruit, salad, yoghurt and water

Chartwells
Schools

🍷 Vegetarian 🍷 Vegan 🍷 Oily Fish 🍷 Fruity! 🍷 Wholegrain 🍷 Nutritionist's Choice

Our menu is subject to change. Please be assured that all notified medical diets and allergy requirements will be safely catered for.

SPRING/SUMMER 2026 MENU

WEEK 3

W/C: 27/04/2026, 18/05/2026, 15/06/2026, 06/07/2026, 27/07/2026

		MONDAY	TUESDAY	WEDNESDAY	THURSDAY	FRIDAY
HOT DISHES	OPTION 1	Cheese and Tomato Pizza with Pasta Salad 🍷 🍷	All Day Breakfast with Potato Wedges	Roast Chicken with Roast Potatoes and Gravy 🍷	Lasagne with Garlic Bread 🍷 🍷	Fish Fingers with Chips
		OR	OR	OR	OR	OR
	OPTION 2	Veggie Meat Feast Pizza with Pasta Salad 🍷 🍷	Cheesy Bean Burrito with Wholegrain Rice 🍷 🍷 🍷	Vegetarian Cottage Pie with Gravy 🍷 🍷	Vegetable Lasagne with Garlic Bread 🍷 🍷 🍷	Quorn Dippers with Chips 🍷
	OR	OR	OR	OR	OR	
	OPTION 3	Tomato Pasta Fresh, homemade Tomato Sauce with Wholewheat Pasta 🍷 🍷	Tomato Pasta Fresh, homemade Tomato Sauce with Wholewheat Pasta 🍷 🍷	Tomato Pasta Fresh, homemade Tomato Sauce with Wholewheat Pasta 🍷 🍷	Tomato Pasta Fresh, homemade Tomato Sauce with Wholewheat Pasta 🍷 🍷	Tomato Pasta Fresh, homemade Tomato Sauce with Wholewheat Pasta 🍷 🍷
HOT DISHES ARE SERVED WITH TWO VEGETABLES AND FRESHLY BAKED BREAD						
DELI	OPTION 4	Jacket Potato Choice of either Baked Beans, Cheese or Tuna	Baguettes Choice of either Ham, Cheese or Tuna 🍷	Jacket Potato Choice of either Baked Beans, Cheese or Tuna	Baguettes Choice of either Ham, Cheese or Tuna 🍷	Jacket Potato Choice of either Baked Beans, Cheese or Tuna
	DELI DISHES ARE SERVED WITH MIXED SALAD					
DESSERT		Custard Shortbread with Melon Wedges 🍷	Strawberry Jelly	Chocolate Mousse	Vanilla Ice Cream	Banana Flapjack 🍷



BAKED POTATOES SERVED DAILY
With a choice of toppings 🍷 🍷



AVAILABLE DAILY
Fresh fruit, salad, yoghurt and water

Chartwells
Schools

🍷 Vegetarian 🍷 Vegan 🍷 Oily Fish 🍷 Fruity! 🍷 Wholegrain 🍷 Nutritionist's Choice

Our menu is subject to change. Please be assured that all notified medical diets and allergy requirements will be safely catered for.



Respect Charter

at Brighstone CE Aided Primary School

At Brighstone CE Aided Primary School we believe staff, parents and children are entitled to a safe and protective environment in which to learn and work. We strive to ensure that our school offers a warm and nurturing environment. All members of the school community and visitors should demonstrate mutual respect, to feel safe, work together and to use restorative approaches as the foundation of our practice. Any behaviour that may lead to feelings of harassment, alarm or distress to members of our community, will not be tolerated and action taken.

Expectations

- o That all adults set a good example to children at all times, showing them how to get along with all members of the school and the wider community.
- o That no one - staff, governors, parents, carers, volunteers or children - be subjected to abusive behaviour or any form of threats from visitors on the school premises.
- o That physical attacks and threatening behaviour, abusive or insulting language verbal or written (including on social media), to staff, governors, parents, carers, volunteers, children and other users of the school premises will not be tolerated and may lead to a ban from school premises and/or police action.

Types of behaviour that are considered serious and unacceptable

This is not an exhaustive list but seeks to provide illustrations of such behaviour:

- o Shouting, either in person or over the telephone
- o Speaking in an aggressive/threatening tone
- o Physically intimidating, e.g. standing very close
- o The use of aggressive hand gestures/exaggerated movements
- o Physical threats
- o Shaking or holding a fist towards another person
- o Swearing and name calling
- o Pushing
- o Slapping, punching, hitting or kicking
- o Racist, homophobic or other hateful behaviour
- o Sexist comments or sexual innuendo
- o Disrespecting religion or belief
- o Inappropriate communications (posting on Social Networking sites, emails or letters, etc.) which could bring the school into disrepute or be deemed as bullying, harassment and/or a hate-related

The school reserves the right to take any necessary actions to ensure that members of the school community are not subjected to any form of abuse in line with policy and procedure. If you choose to engage in these behaviours you may be asked to leave the site or the police may be called.

Thank you for your understanding and support

If your message is **urgent** or about **attendance** contact Mrs Pelosi in the **office**:
01983 740285
office@brighstoneprimary.org.uk
Office Hours 8am - 4pm

If you would like to speak with the **Headteacher** Mrs Lennon, you can find her at the school gate every morning or you can call 740285 to make an appointment with her



For **general enquiries** you can call or email the office, text the school messaging service or send a message to our school **Facebook** page: <https://www.facebook.com/BrighstoneCEPrimarySchool>
Our Facebook page is open so you do not need a personal account to view it

If you would like to contact your child's class teacher, you can email them at the following email addresses. Please allow at least one working day for a reply. For anything urgent, please contact the school office.

Year R - teacher.flowerbee@brighstoneprimary.org.uk
Year 1/2 - teacher.bumblebee@brighstoneprimary.org.uk
Year 3/4 - teacher.honeybee@brighstoneprimary.org.uk
Year 5/6 - teacher.ivybee@brighstoneprimary.org.uk
The Nest resourced provision - thenest@brighstoneprimary.org.uk

If you have concern regarding **safeguarding** or your **child's mental health and wellbeing** please contact Mrs Jones. You can speak to her on the playground every morning, call into the school office or email m.jones@brighstoneprimary.org.uk
safeguarding@brighstoneprimary.org.uk

Our **Newsletter** is published every Friday with key information for parents and carers. You can find it on our school website: <https://www.brighstoneprimary.org.uk/category/the-buzz/>

Contact us



If you have a **safeguarding** concern about a child outside of school hours you can call the police on 999 if you feel they are at risk of immediate harm or contact Children's Services on 0300 300 0117

Please be reminded that all children need to wear the correct PE kit on PE days.
The correct PE kit is also needed for sports clubs.
Socks and hair accessories must be in the school colours.

School Day Timings

The school day is as follows:

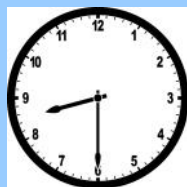
8.25am: Gates open

8.30am: School starts

3pm: School ends

3.10pm: Gates close

Many thanks.





School Term Dates for 2025-2026

Friday 22nd May:	Last day of term; wear purple for Juvenile Arthritis Day
Monday 1st June:	INSET day - school closed
Tuesday 2nd June:	Back to school
Friday 5th June:	Careers Day
Saturday 13th June:	Shorwell Midsummer Fair (country dancing)
Thurs 18th - Friday 19th June:	Y4 residential
Monday 29th June - Wednesday 1st July:	Y6 residential
Friday 3rd July:	Y6 Leavers' Service in Portsmouth Cathedral
Tuesday 7th July:	Transition Day
Wednesday 8th July:	Transition Day for the Island Free School
Friday 10th July:	Reports sent home
Monday 13th July:	KS2 trip to Weald and Downland Living Museum
Tuesday 14th July:	Parents Evening
Wednesday 15th July:	Sports Day - change of date
Friday 17th July:	BSA Summer Sizzler
Saturday 18th July:	BHS Summer Show (country dancing)
Wednesday 22nd July:	Whole school summer play (2pm)
Thursday 23rd July:	Whole school summer play (6pm)
Friday 24th July:	Last day of term; Summer Shindig

Please note that the school will be closed on the following days in this academic year:

- Day 4: Monday 1st June 2026
- Day 5: Monday 27th July 2026