

The Buzz

24th April 2026



Learning and Achieving Through Love,
Courage and Respect

Dear parents, carers and children,

This week, our Y6 children have been busy taking part in their **mock SATs**. These help them to prepare for the real SATs that are coming up in May. They have worked really hard to remember and apply their learning, and, in the next couple of weeks before SATs, they will be working hard to close any gaps to give themselves the best possible chance. Well done and keep it up, Y6s!



Yesterday, the whole school took part in a workshop run by Hamish from **Playground Proms**; this was to introduce us to, and prepare us for, the comedy string quartet who will be visiting us on Monday. We played some noise-making warm-up games and then learnt the words and actions for the song we will be singing with the musicians on Monday. After that, KS2 continued with Hamish, exploring the 'size' of sounds and the repetitive patterns that music makes. We used our bodies to express this and then ended up being spacemen to Strauss' "Sunrise" fanfare (better known as the music to 2001 A Space Odyssey). The performance on Monday is lining up to be a very exciting one and we can't wait!



Class news

"In our Science lesson, **Bumble Bees** went outside in the sun and had a 'plant hunt' around the school grounds. We looked for all different plants - one that was taller than us, one in a strange place, one with a flower, one with lots of leaves and many more. We realised that plants come in all shapes and sizes and can all look very different." Mrs Baker



"**Flower Bees** have started doing dictation each week. This week, everyone in the class was able to write, either alone or with support, 'a dog can dig'. One group even managed to add their own word to describe the dog." Mrs Cousins

I hope everyone has a lovely sunny weekend.

With best wishes, Mrs Lennon and the Brighstone team



Collective Worship



This half term, the theme is The Parables of Jesus. This week, we have been learning about The Sower. The value is wisdom.

We watched the story of The Sower. We thought about the message behind this story. When the sower spreads the seeds on the different soils, the flourishing of the seeds depends on the soil onto which they fall. Only one part of the soil is deep, rich and fertile. The seeds that fall into this soil put down good roots and grow into healthy, fruitful plants.

The seeds in the story represent God's wise teaching which helps us to flourish and live our lives well. The four soils in the story represent the different types of people who hear this teaching.

Some people will be like the deep, rich, fertile soil. They will hear God's wise teaching and try to put it into practice in their lives. They will do their best to love others and make a difference in the world. Their lives will be fruitful.

Some people will be like the other types of shallow, rocky or weedy soils. They will hear God's teaching but it doesn't reach their hearts and they will not put it into practice. They will soon forget about it.



Teach us Lord your wisdom:

The wisdom of listening with open ears,
The wisdom of waiting with patient hearts,
The wisdom of responding with ready wills,
So that we may be like the good soil and live
lives that bear good fruit.

Amen

Whoever has ears to hear, let them hear.





Inclusion

Welcome to our inclusion section! Each week, we share a Makaton sign and Widgit symbol, as part of our inclusive ethos.

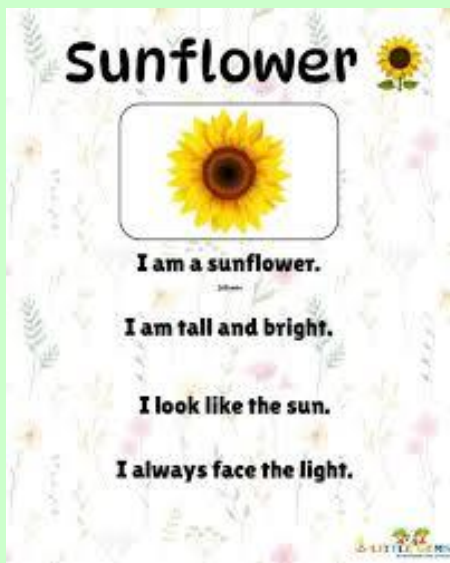
This week, our word is:
(They have been reading planting sunflower seeds!)

sunflower

https://www.youtube.com/watch?v=SHDwKtQo_5k

Makaton sign	Widgit symbol
	

Poetry Corner



Reading Recommendations

Each week, we include a book recommendation from a child and/or adult.

This week, Skye recommends *The Wonder Garden* by Kristjana S Williams and Jenny Broom. This is what Honey Bee class are reading in their English lessons.

I recommend this book because you can learn about different animals from the Black Forest, the Himalayan mountains, the Great Barrier Reef, the Chihuahuan Desert and the Amazon rainforest. It has really good illustrations. It shows you the names of the animals and the Latin names for the animals. It tells you a bit more about the animals in the different habitats and shows you pictures of them.



Safeguarding

If you have a concern about a child you can call the police on 999 if you feel they are at risk of immediate harm.

Contact the NSPCC Helpline

If you have any concerns at all about a child's safety or wellbeing, don't hesitate to contact us.

Call us or email help@nspcc.org.uk

0808 800 5000

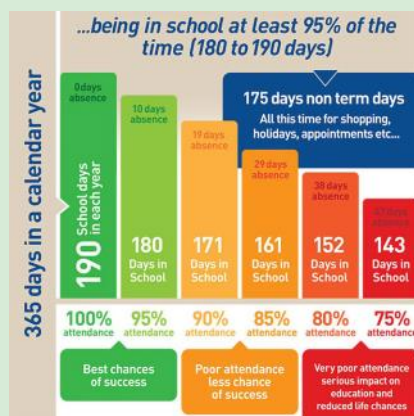
[Find out more](#)

You can contact the NSPCC:
Or call children's services 01983 823435

Attendance Matters!



Week Commencing 20th April
(National attendance target: 95%)
Actual Attendance: 97.19%
Late marks this week: 6

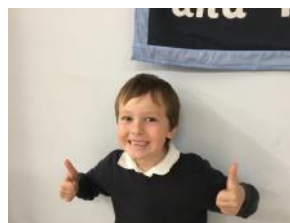


<https://www.nhs.uk/live-well/is-my-child-too-ill-for->



Golden Book

Flower Bee	Theodore for really persevering with his reading at home even when it was hard.
Bumble Bee	Arthur P for showing amazing perseverance with his measuring work on Monday and having a great attitude, even when it got super challenging! Tahnee for using the correct language to explain maths problems when dividing by 2. Tahnee said that <i>'you know you're dividing by 2 when you are sharing equally between two people'</i> . Well done Tahnee! Arthur P, Elsie-Jayne, Arlo T, Austin, Arthur P, Mariia and Tahnee for working really hard at learning all of the set 2 sounds.
Honey Bee	Erin for her excellent, clear and well thought out verbal reasoning in Maths. I am always impressed by your responses Erin. Rufus for trying so hard to be helpful and responsible this week, which has been much appreciated during a week in which our class has needed to change rooms several times to accommodate the mock SATs.
Ivy Bee	Alice for doing what she does best - pushing herself to independently use what she has learnt to the best of her ability and creating some amazing adverbials and noun phrases in the process! Fred C for the consistent effort he has put into SATs-related work this week - in both his intervention work and the mock SATs themselves.
Bee-Haviour	Elsie-Jayne for her improved learning behaviours.
Sports Bee	Thomas for being a kind and helpful team mate during cricket in PE.



Focus on Attendance

Another fantastic week for attendance with the whole school achieving 97%!!

Learning builds step-by-step, day-by-day, week-by-week. When children miss school, even just a day or two, it can create gaps that are hard to catch up on.

Of course, illness can't be helped but regular attendance really matters. It helps children not only grow academically, but also develop important life skills like routine, resilience, and responsibility. Let's continue to work together to give every child the best chance to succeed, because every day really does count.





I've been receiving some good suggestions for the name of the new cabin on the playground.

Here they are so far:

Chillax Zone

Cosy Zone

John

The Snug

The Creaky Cabin

The Cosy Hut

The Happy Hive

The Nook

Keep the suggestions coming in!



The Brighstone School Association now receive 30% commission from Stikins every time you buy your new name labels.

Quote our number 2721 when you place an order. A great way to keep your child's belongings safe and to support the school!

<https://www.stikins.co.uk>

Parents,
Family members
& friends of *Brighstone Primary School*

Does your place of work offer the Match Funding Scheme?

Get in touch with us if your employers could help our BSA fundraisers via email at brighstoneschoolassoc@gmail.com

Like Our Pages!



Facebook & Instagram

Search for
Brighstone School Association

It's never too late to keep up with our latest news!

BSA Astra Recycling Clothing Bank

We take...
Clothes,
Shoes,
Bed Linen,
Accessories
(Such as belts, hats & handbags)
Soft Toys



We can't take...
Duvelts or Cushions,
Off Cuts,
Carpet or Curtains

Located in school entrance car park



Brighstone Primary School's

CAREERS DAY



Would you like to come into school to talk to our children about your job?

Your support could make a real difference in inspiring our children, broadening their horizons and helping them to see the many possibilities open to them in the future.

**Friday 5th June
2026**

Please contact the school office:
office@brighstoneprimary.org.uk
740285

School Dinners

Children in **Year R, 1 and 2** are entitled to a 'universal' **free** school meal every day.

Children in Years 3-6 are charged at **£3.35** per day.

Please note the dates to see which week to look at.



ARE YOU A WINNER?

Every Thursday, check under your plate for a winner sticker!

1. Clear your plate
2. Check if you have a sticker
3. If you do, show a member of kitchen staff
4. Collect your prize

Chartwells Schools Good luck!

New menu for spring and summer!

		SPRING/SUMMER 2026 MENU				
		MONDAY	TUESDAY	WEDNESDAY	THURSDAY	FRIDAY
HOT DISHES	OPTION 1	Cheese and Tomato Pizza with Potato Wedges 🌱	Beef Bolognese with Wholewheat Pasta 🍷🍷	Roast Chicken with Roast Potatoes and Gravy 🍷	I.O.W Pork Sausages with Mashed Potato and Gravy	Fish Fingers with Chips
	OPTION 2	BBQ Vegetable Wrap with Wholegrain Rice 🌱🍷🍷	Vegetarian Bolognese with Wholewheat Pasta 🌱🍷🍷	Roast BBQ Quorn with Roast Potatoes and Gravy 🌱	Macaroni Cheese 🌱🍷	Quorn Dippers with Chips 🌱
	OPTION 3	Tomato Pasta Fresh, homemade Tomato Sauce with Wholewheat Pasta 🌱🍷	Tomato Pasta Fresh, homemade Tomato Sauce with Wholewheat Pasta 🌱🍷	Tomato Pasta Fresh, homemade Tomato Sauce with Wholewheat Pasta 🌱🍷	Tomato Pasta Fresh, homemade Tomato Sauce with Wholewheat Pasta 🌱🍷	Tomato Pasta Fresh, homemade Tomato Sauce with Wholewheat Pasta 🌱🍷
HOT DISHES ARE SERVED WITH TWO VEGETABLES AND FRESHLY BAKED BREAD						
DELI	OPTION 4	Jacket Potato Choice of either Baked Beans, Cheese or Tuna 🌱	Baguettes Choice of either Ham, Cheese or Tuna 🌱	Jacket Potato Choice of either Baked Beans, Cheese or Tuna 🌱	Baguettes Choice of either Ham, Cheese or Tuna 🌱	Jacket Potato Choice of either Baked Beans, Cheese or Tuna 🌱
DELI DISHES ARE SERVED WITH MIXED SALAD						
DESSERT		Chocolate Brownie 🌱	Oat Cookie 🌱	Strawberry Shortcake Mousse	Vanilla Slice with Melon Wedges 🌱	Chocolate Ice Cream

BAKED POTATOES SERVED DAILY
With a choice of toppings 🍷🍷

AVAILABLE DAILY
Fresh fruit, salad, yoghurt and water

🌱 Vegetarian 🍷 Vegan 🍷 Oily Fish 🍷 Fruity! 🍷 Wholegrain 🍷 Nutritionist's Choice
 Our menu is subject to change. Please be assured that all notified medical diets and allergy requirements will be safely catered for.

SPRING/SUMMER 2026 MENU

WEEK 2

W/C: 20/04/2026, 11/05/2026, 08/06/2026, 29/06/2026, 20/07/2026

		MONDAY	TUESDAY	WEDNESDAY	THURSDAY	FRIDAY
HOT DISHES	OPTION 1	Cheese and Tomato Pizza with Potato Wedges 🍷	Beef Burger with Potato Wedges	Roast Gammon with Roast Potatoes and Gravy	Chicken and Vegetable Korma with Wholegrain Rice 🍷	Fish Fingers with Chips
		OR	OR	OR	OR	OR
	OPTION 2	Tex Mex Vegetable Fajita with Wholegrain Rice 🍷 🍷	Beany Vegetable Burger with Potato Wedges 🍷 🍷	Bean and Cheese Pastry Turnover with Roast Potatoes and Gravy 🍷	Macaroni Cheese 🍷	Quorn Dippers with Chips 🍷
	OR	OR	OR	OR	OR	
	OPTION 3	Tomato Pasta Fresh, homemade Tomato Sauce with Wholewheat Pasta 🍷 🍷	Tomato Pasta Fresh, homemade Tomato Sauce with Wholewheat Pasta 🍷 🍷	Tomato Pasta Fresh, homemade Tomato Sauce with Wholewheat Pasta 🍷 🍷	Tomato Pasta Fresh, homemade Tomato Sauce with Wholewheat Pasta 🍷 🍷	Tomato Pasta Fresh, homemade Tomato Sauce with Wholewheat Pasta 🍷 🍷
HOT DISHES ARE SERVED WITH TWO VEGETABLES AND FRESHLY BAKED BREAD						
DELI	OPTION 4	Jacket Potato Choice of either Baked Beans, Cheese or Tuna	Baguettes Choice of either Ham, Cheese or Tuna 🍷	Jacket Potato Choice of either Baked Beans, Cheese or Tuna	Baguettes Choice of either Ham, Cheese or Tuna 🍷	Jacket Potato Choice of either Baked Beans, Cheese or Tuna
	DELI DISHES ARE SERVED WITH MIXED SALAD					
DESSERT		Banana Oat Bite 🍷	Lemon Cookie 🍷	Caramel Mousse	Chocolate Brownie 🍷	Strawberry Ice Cream



BAKED POTATOES SERVED DAILY
With a choice of toppings 🍷 🍷



AVAILABLE DAILY
Fresh fruit, salad, yoghurt and water

Chartwells
Schools

🍷 Vegetarian 🍷 Vegan 🍷 Oily Fish 🍷 Fruity! 🍷 Wholegrain 🍷 Nutritionist's Choice

Our menu is subject to change. Please be assured that all notified medical diets and allergy requirements will be safely catered for.

SPRING/SUMMER 2026 MENU

WEEK 3

W/C: 27/04/2026, 18/05/2026, 15/06/2026, 06/07/2026, 27/07/2026

		MONDAY	TUESDAY	WEDNESDAY	THURSDAY	FRIDAY
HOT DISHES	OPTION 1	Cheese and Tomato Pizza with Pasta Salad 🍷 🍷	All Day Breakfast with Potato Wedges	Roast Chicken with Roast Potatoes and Gravy 🍷	Lasagne with Garlic Bread 🍷 🍷	Fish Fingers with Chips
		OR	OR	OR	OR	OR
	OPTION 2	Veggie Meat Feast Pizza with Pasta Salad 🍷 🍷	Cheesy Bean Burrito with Wholegrain Rice 🍷 🍷 🍷	Vegetarian Cottage Pie with Gravy 🍷 🍷	Vegetable Lasagne with Garlic Bread 🍷 🍷 🍷	Quorn Dippers with Chips 🍷
	OR	OR	OR	OR	OR	
	OPTION 3	Tomato Pasta Fresh, homemade Tomato Sauce with Wholewheat Pasta 🍷 🍷	Tomato Pasta Fresh, homemade Tomato Sauce with Wholewheat Pasta 🍷 🍷	Tomato Pasta Fresh, homemade Tomato Sauce with Wholewheat Pasta 🍷 🍷	Tomato Pasta Fresh, homemade Tomato Sauce with Wholewheat Pasta 🍷 🍷	Tomato Pasta Fresh, homemade Tomato Sauce with Wholewheat Pasta 🍷 🍷
HOT DISHES ARE SERVED WITH TWO VEGETABLES AND FRESHLY BAKED BREAD						
DELI	OPTION 4	Jacket Potato Choice of either Baked Beans, Cheese or Tuna	Baguettes Choice of either Ham, Cheese or Tuna 🍷	Jacket Potato Choice of either Baked Beans, Cheese or Tuna	Baguettes Choice of either Ham, Cheese or Tuna 🍷	Jacket Potato Choice of either Baked Beans, Cheese or Tuna
	DELI DISHES ARE SERVED WITH MIXED SALAD					
DESSERT		Custard Shortbread with Melon Wedges 🍷	Strawberry Jelly	Chocolate Mousse	Vanilla Ice Cream	Banana Flapjack 🍷



BAKED POTATOES SERVED DAILY
With a choice of toppings 🍷 🍷



AVAILABLE DAILY
Fresh fruit, salad, yoghurt and water

Chartwells
Schools

🍷 Vegetarian 🍷 Vegan 🍷 Oily Fish 🍷 Fruity! 🍷 Wholegrain 🍷 Nutritionist's Choice

Our menu is subject to change. Please be assured that all notified medical diets and allergy requirements will be safely catered for.



Respect Charter

at Brighstone CE Aided Primary School

At Brighstone CE Aided Primary School we believe staff, parents and children are entitled to a safe and protective environment in which to learn and work. We strive to ensure that our school offers a warm and nurturing environment. All members of the school community and visitors should demonstrate mutual respect, to feel safe, work together and to use restorative approaches as the foundation of our practice. Any behaviour that may lead to feelings of harassment, alarm or distress to members of our community, will not be tolerated and action taken.

Expectations

- That all adults set a good example to children at all times, showing them how to get along with all members of the school and the wider community.
- That no one - staff, governors, parents, carers, volunteers or children - be subjected to abusive behaviour or any form of threats from visitors on the school premises.
- That physical attacks and threatening behaviour, abusive or insulting language verbal or written (including on social media), to staff, governors, parents, carers, volunteers, children and other users of the school premises will not be tolerated and may lead to a ban from school premises and/or police action.

Types of behaviour that are considered serious and unacceptable

This is not an exhaustive list but seeks to provide illustrations of such behaviour:

- Shouting, either in person or over the telephone
- Speaking in an aggressive/threatening tone
- Physically intimidating, e.g. standing very close
- The use of aggressive hand gestures/exaggerated movements
- Physical threats
- Shaking or holding a fist towards another person
- Swearing and name calling
- Pushing
- Slapping, punching, hitting or kicking
- Racist, homophobic or other hateful behaviour
- Sexist comments or sexual innuendo
- Disrespecting religion or belief
- Inappropriate communications (posting on Social Networking sites, emails or letters, etc.) which could bring the school into disrepute or be deemed as bullying, harassment and/or a hate-related

The school reserves the right to take any necessary actions to ensure that members of the school community are not subjected to any form of abuse in line with policy and procedure. If you choose to engage in these behaviours you may be asked to leave the site or the police may be called.

Thank you for your understanding and support

If your message is **urgent** or about **attendance** contact Mrs Pelosi in the **office**:
01983 740285
office@brighstoneprimary.org.uk
Office Hours 8am - 4pm

If you would like to speak with the **Headteacher** Mrs Lennon, you can find her at the school gate every morning or you can call 740285 to make an appointment with her



For **general enquiries** you can call or email the office, text the school messaging service or send a message to our school **Facebook** page: <https://www.facebook.com/BrighstoneCEPrimarySchool>
Our Facebook page is open so you do not need a personal account to view it

If you would like to contact your child's class teacher, you can email them at the following email addresses. Please allow at least one working day for a reply. For anything urgent, please contact the school office.

Year R - teacher.flowerbee@brighstoneprimary.org.uk
Year 1/2 - teacher.bumblebee@brighstoneprimary.org.uk
Year 3/4 - teacher.honeybee@brighstoneprimary.org.uk
Year 5/6 - teacher.ivybee@brighstoneprimary.org.uk
The Nest resourced provision - thenest@brighstoneprimary.org.uk

If you have concern regarding **safeguarding** or your **child's mental health and wellbeing** please contact Mrs Jones. You can speak to her on the playground every morning, call into the school office or email m.jones@brighstoneprimary.org.uk
safeguarding@brighstoneprimary.org.uk

Our **Newsletter** is published every Friday with key information for parents and carers. You can find it on our school website: <https://www.brighstoneprimary.org.uk/category/the-buzz/>

Contact us



If you have a **safeguarding** concern about a child outside of school hours you can call the police on 999 if you feel they are at risk of immediate harm or contact Children's Services on 0300 300 0117

Please be reminded that all children need to wear the correct PE kit on PE days.
The correct PE kit is also needed for sports clubs.
Socks and hair accessories must be in the school colours.

School Day Timings

The school day is as follows:

8.25am: Gates open

8.30am: School starts

3pm: School ends

3.10pm: Gates close

Many thanks.





School Term Dates for 2025-2026

Tuesday 28th April:	Relax Kids workshop
Thursday 30th April:	Bumble Bee trip to the Blue Reef Aquarium
Saturday 9th May:	Wolverton Folk and Blues Fair (BSA tea tent)
Sunday 10th May:	Walk the Wight
Mon 11th - Thurs 14th May:	Y6 SATs
Tuesday 12th May:	Bumble Bee trip to Carisbrooke Castle
Friday 22nd May:	Last day of term
Monday 1st June:	INSET day - school closed
Tuesday 2nd June:	Back to school
Friday 5th June:	Careers Day
Saturday 13th June:	Shorwell Midsummer Fair (country dancing)
Thurs 18th - Friday 19th June:	Y4 residential
Monday 29th June - Wednesday 1st July:	Y6 residential
Friday 3rd July:	Y6 Leavers' Service in Portsmouth Cathedral
Tuesday 7th July:	Transition Day
Wednesday 8th July:	Sports Day
Friday 10th July:	Reports sent home
Tuesday 14th July:	Parents Evening
Friday 17th July:	BSA Summer Sizzler
Saturday 18th July:	BHS Summer Show (country dancing)
Friday 24th July:	Last day of term; Summer Shindig

Please note that the school will be closed on the following days in this academic year:

Day 4:	Monday 1st June 2026
Day 5:	Monday 27th July 2026