

The Buzz

17th April 2026



Learning and Achieving Through Love,
Courage and Respect

Dear parents, carers and children,

Welcome to the summer term! I hope everyone had a good Easter break.



We have a busy term ahead of us. Amongst all the usual learning, lots of other events will also be taking place. **Bumble Bees** will be visiting the Blue Reef Aquarium in a couple of weeks and **Y4s** will be having their camping residential in June, quickly followed by **Y6s** who will be going to London. **SATs** are taking place in May; we wish our Y6s the very best of luck with these. On 5th June we will be holding our **Careers Day**. Thank you to those who have offered their time for this day.

Please do contact the office if you would like to come along and inspire our children! We are exploring a whole school **summer play** to be held in the marquee again. This will be another great opportunity for our children to shine and show off their skills!

We have a few community events coming up as well: a weekend of **Wolverton Folk and Blues**, for which the BSA runs the tea and cake stall, and **Walk the Wight**, and then **Shorwell Midsummer Fair** and **Brighstone Horticultural Society Summer Show** in June/July, both of which will involve our country dancers (letters will be coming out about the country dancing in the next few weeks).

Following last year's successful event, the governors are busy planning this year's **Summer Shindig**, which will be taking place on Friday 24th July for the school and wider community. Tickets will be on sale soon; watch this space! The **BSA's Summer Sizzler** will also be taking place again on Friday 17th July; this is for the school community. Both of these events are great fundraisers for the school.

Class news

"**Bumble Bees** have been working on their measuring skills this week. They've not only been measuring with non-standard units, using cubes and paper-clips, but have also been measuring in cms and using metre sticks to measure larger objects. Well done, team Bumble Bee." Miss Sztypuljak



"It has been another very busy and productive week in **Honey Bee class**! In English, we completed our creative writing unit based on the book 'The Lost Happy Endings', by writing our own ending to the story. Like the book's main character, Jub, we used a golden pen to write with (but rather than writing on the violet night sky...we used violet paper!) We began our next unit of work using the beautiful book 'The Wonder Garden', with a walk to experience, and wonder at, the sights, sounds and feel of the habitat surrounding Brighstone's Dragon Tree. In DT, we created the pneumatic toys that we have been designing. More about this next week." Mrs Northard

More class news on p4.

I hope everyone has a lovely weekend.

With best wishes,

Mrs Lennon and the Brighstone team

More photos
on Facebook!

The current church colours are white and gold for Eastertide. These colours symbolize joy, victory, purity, and light, celebrating the resurrection of Jesus.

Collective Worship



This half term, the theme is The Parables of Jesus. This week, we have been learning about The Wise and Foolish Builders. The value is wisdom.

We heard the story of The Wise and Foolish Builders, which was one of Jesus' parables. We thought about the message behind this story. The important words in this parable are:

"Everyone who hears these words of mine and puts them into practice is like the wise man who built his house upon a rock."



Jesus is using a house as a symbol for our lives. He is saying that if we put his wise words (his teachings) into practice, it will be like building our lives on a rock and we will be able to stand firm when life's challenges come our way.

We then discussed other parables that Jesus told, including The Lost Sheep, The Good Samaritan and The Sower.

"Do unto others as you would have them do unto you," are some of Jesus' wise words. Children have been putting these into practice this week through showing kindness!

I'LL BUILD MY LIFE ON SOLID ROCK

When I'm up and when I'm down,
When I'm sitting on the ground,
When I run and when I walk,
I'll build my life on solid rock.



When I laugh and when I cry,
When I smile and when I sigh,
When I'm silent and when I talk,
I'll build my life on solid rock.



When my life is nice and easy,
When I'm worried, stomach queasy,
When I'm peaceful, when I'm shocked,
I'll build my life on solid rock.

When I want to do what's wise,
But foolish thoughts buzz round like flies,
I'll stop. And pray. And then take stock.
And build my life on solid rock.

By Bob Hartman



Inclusion

Welcome to our inclusion section! Each week, we share a Makaton sign and Widgit symbol, as part of our inclusive ethos.

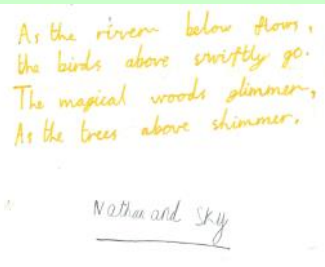
This week, our word is:
(They have been reading Goldilocks and the Three Bears!)

bear

<https://www.youtube.com/watch?v=zenA64MNSf0>

Makaton sign	Widgit symbol
	

Poetry Corner



Honey Bee class visited the Dragon Tree today, as part of their English learning journey focusing on the book *The Wonder Garden*.

Nathan and Sky B, and Tristan and Noah H, were inspired to write poems while we were there. They then copied them in neat afterwards.

Aren't they wonderful!



Reading Recommendations

Each week, we include a book recommendation from a child and/or adult.

This week, Annie recommends *Skulduggery Pleasant* by Derek Landy.

I recommend this book because if you like horror fantasy and magic all together, then this is the book for you! It's all about this girl called Stephanie, and she's figured out that magic is real because this man called Skulduggery is a detective, magician, and warrior. Oh yes, and dead.

Most of it has monsters in it and lots of magic.

I chose this book because the front cover looked really cool and I like magic.



Safeguarding

If you have a concern about a child you can call the police on 999 if you feel they are at risk of immediate harm.

Contact the NSPCC Helpline

If you have any concerns at all about a child's safety or wellbeing, don't hesitate to contact us.

Call us or email help@nspcc.org.uk

0808 800 5000

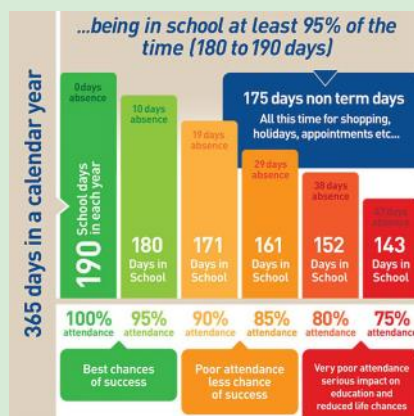
Find out more

You can contact the NSPCC:
Or call children's services 01983 823435

Attendance Matters!



Week Commencing 13th April
(National attendance target: 95%)
Actual Attendance: 98%
Late marks this week: 6



<https://www.nhs.uk/live-well/is-my-child-too-ill-for->



Golden Book

Flower Bee	Ariella for setting in so well to the Nest. Otis, Oscar P and Rae for working hard with their magnet boards this week.
Bumble Bee	Mariia for having an excellent attitude towards learning. Mariia will try and solve problems first and only ask for help if she really needs it. She never says no to a challenge! Well done Mariia! Hudson for coming back to school with a super attitude. Hudson has been focused and ready to learn, as well as working super hard. Well done Hudson!
Honey Bee	Bram for creating a superb piece of creative writing which demonstrates hard work, attention to detail and a super attitude to learning and improvement. I am very proud of you Bram! Sky for coming back to school after the Easter break, with such a positive attitude; showing a super attitude to learning and producing some super work particularly in Maths and English.
Ivy Bee	Leo and Georgia for the independent effort they put into their maths learning and the positive attitude they had when discovering and discussing mistakes. Reece for the effort he made when learning grammar terminology and helping someone else too - what positive attributes!
Bee-Haviour	Thomas for showing extreme kindness to his friends in the Nest.
Sports Bee	Edmund for demonstrating great skills and enthusiasm for fielding skills this week.



More Class News!

Flower Bee Class had such a wonderful day at the Isle of Wight Donkey Sanctuary yesterday. Annie, Jan and Paul showed us around and taught us about the names of the parts of a donkey, how they look after their hooves, fur and teeth, and all about what they feed them on. We mixed up their food and learned about why you should never feed a horse or donkey in a field handfuls of grass (it is full of sugar and very fattening for them!)

Did you know that donkeys can eat straw too? This means that they can eat their own bed!

We saw Pickle, the newest baby donkey, and we met some of the other donkeys close up. Then we had a visit to the wild flower meadow and the stream before lunch.

The minibus trip was fun too. Phil the driver was beeping his horn when the children were singing "the horn on the bus goes beep beep beep"!

The staff at the Donkey Sanctuary, some of the other visitors there, and Phil the bus driver, ALL commented on how well behaved the children were. Mrs Holmes, Adah and I were super proud of all of them.



Focus on Attendance

We are delighted to share that we have achieved 98% attendance this week, a fantastic start to the summer term!

This is a brilliant effort from our whole school community and makes a real difference to children's learning. Being in school every day helps pupils build on their knowledge, develop confidence, and stay connected with their friends and teachers.

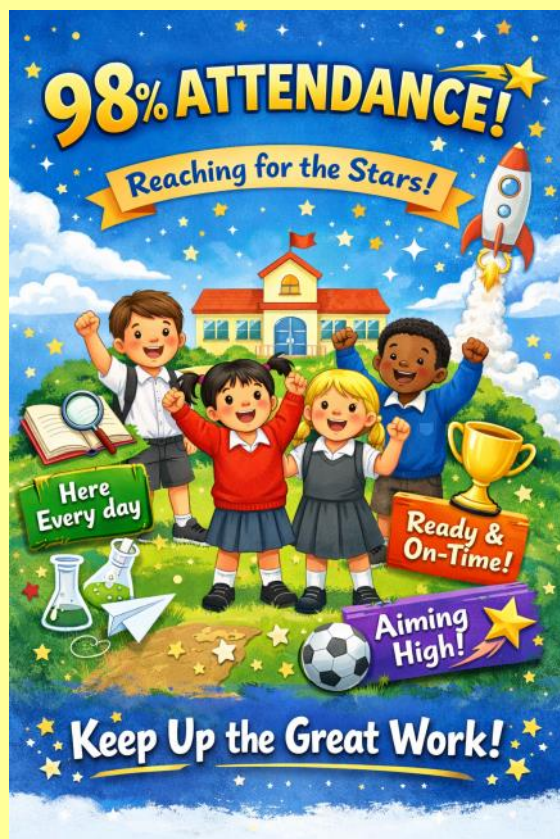
Even missing small amounts of time can make it harder for children to keep up, so this strong start sets everyone up for success.

Good attendance also plays a vital role in building children's aspirations and future success. Every day in school helps children develop the skills, resilience, and knowledge they need to aim high, dream big, and "reach for the stars" in whatever they choose to do next.

We would love to keep this momentum going over the coming weeks. Regular attendance not only supports academic progress, but also helps children feel settled, secure, and part of our school community.

We are continuing our Attendance H.E.R.O (Here Every day, Ready and On-time) campaign this half term, celebrating those pupils who show excellent commitment to being in school every day and supporting them in building the habits that will help them succeed in their future goals and aspirations.

Thank you for your continued support, it really does make a difference.





We were all very excited to see a new structure on our playground on Monday morning! Following feedback from the School Council, the BSA have very kindly paid for a new cabin/hut for the children to use (now that the Cosy Cabin is within The Nest outside area and therefore can't be accessed by the rest of the school).

This was built by Jackson Brodie, and can be used for quiet time at playtimes and lunchtimes, including reading books.

Our School Council, including the Head Pupils, cut the ribbon on Monday.

We are gathering ideas for its name. Please come to me (Mrs Lennon) with your suggestions!

Thank you to the School Council for suggesting this, as well to the BSA for funding it.



The Brighstone School Association now receive 30% commission from Stikins every time you buy your new name labels.

Quote our number 2721 when you place an order. A great way to keep your child's belongings safe and to support the school!

<https://www.stikins.co.uk>

Parents,
Family members
& friends of *Brighstone Primary School*

Does your place of work offer the Match Funding Scheme?

Get in touch with us if your employers could help our BSA fundraisers via email at brighstoneschoolassoc@gmail.com

Like Our Pages!



Facebook & Instagram

Search for
Brighstone School Association

It's never too late to keep up with our latest news!

BSA Astra Recycling Clothing Bank

We take...
Clothes,
Shoes,
Bed Linen,
Accessories (Such as belts, hats & handbags)
Soft Toys



We can't take...
Duvels or Cushions,
Off Cuts,
Carpet or Curtains

Located in school entrance car park



Brighstone Primary
School's

CAREERS DAY



Would you like to come into school to talk to our children about your job?

Your support could make a real difference in inspiring our children, broadening their horizons and helping them to see the many possibilities open to them in the future.

**Friday 5th June
2026**

Please contact the school office:
office@brighstoneprimary.org.uk
740285

School Dinners

Children in **Year R, 1 and 2** are entitled to a 'universal' **free** school meal every day.

Children in Years 3-6 are charged at **£3.35** per day.

Please note the dates to see which week to look at.



ARE YOU A WINNER?

Every Thursday, check under your plate for a winner sticker!

1. Clear your plate
2. Check if you have a sticker
3. If you do, show a member of kitchen staff
4. Collect your prize

Chartwells Schools Good luck!

New menu for spring and summer!

		SPRING/SUMMER 2026 MENU				
		MONDAY	TUESDAY	WEDNESDAY	THURSDAY	FRIDAY
HOT DISHES	OPTION 1	Cheese and Tomato Pizza with Potato Wedges 🍷	Beef Bolognese with Wholewheat Pasta 🍷🍷	Roast Chicken with Roast Potatoes and Gravy 🍷	I.O.W Pork Sausages with Mashed Potato and Gravy	Fish Fingers with Chips
	OR		OR		OR	OR
	OPTION 2	BBQ Vegetable Wrap with Wholegrain Rice 🍷🍷🍷	Vegetarian Bolognese with Wholewheat Pasta 🍷🍷🍷	Roast BBQ Quorn with Roast Potatoes and Gravy 🍷	Macaroni Cheese 🍷🍷	Quorn Dippers with Chips 🍷
OR		OR		OR	OR	
OPTION 3	Tomato Pasta Fresh, homemade Tomato Sauce with Wholewheat Pasta 🍷🍷	Tomato Pasta Fresh, homemade Tomato Sauce with Wholewheat Pasta 🍷🍷	Tomato Pasta Fresh, homemade Tomato Sauce with Wholewheat Pasta 🍷🍷	Tomato Pasta Fresh, homemade Tomato Sauce with Wholewheat Pasta 🍷🍷	Tomato Pasta Fresh, homemade Tomato Sauce with Wholewheat Pasta 🍷🍷	
HOT DISHES ARE SERVED WITH TWO VEGETABLES AND FRESHLY BAKED BREAD						
DELI	OPTION 4	Jacket Potato Choice of either Baked Beans, Cheese or Tuna 🍷	Baguettes Choice of either Ham, Cheese or Tuna 🍷	Jacket Potato Choice of either Baked Beans, Cheese or Tuna 🍷	Baguettes Choice of either Ham, Cheese or Tuna 🍷	Jacket Potato Choice of either Baked Beans, Cheese or Tuna 🍷
	DELI DISHES ARE SERVED WITH MIXED SALAD					
DESSERT	Chocolate Brownie 🍷	Oat Cookie 🍷	Strawberry Shortcake Mousse	Vanilla Slice with Melon Wedges 🍷	Chocolate Ice Cream	

BAKED POTATOES SERVED DAILY
With a choice of toppings 🍷🍷

AVAILABLE DAILY
Fresh fruit, salad, yoghurt and water

🍷 Vegetarian 🌱 Vegan 🐟 Oily Fish 🍌 Fruity! 🍷 Wholegrain 🍷 Nutritionist's Choice
 Our menu is subject to change. Please be assured that all notified medical diets and allergy requirements will be safely catered for.

SPRING/SUMMER 2026 MENU

WEEK 2

W/C: 20/04/2026, 11/05/2026, 08/06/2026, 29/06/2026, 20/07/2026

		MONDAY	TUESDAY	WEDNESDAY	THURSDAY	FRIDAY
HOT DISHES	OPTION 1	Cheese and Tomato Pizza with Potato Wedges 🍷	Beef Burger with Potato Wedges	Roast Gammon with Roast Potatoes and Gravy	Chicken and Vegetable Korma with Wholegrain Rice 🍷	Fish Fingers with Chips
		OR	OR	OR	OR	OR
	OPTION 2	Tex Mex Vegetable Fajita with Wholegrain Rice 🍷 🍷	Beany Vegetable Burger with Potato Wedges 🍷 🍷	Bean and Cheese Pastry Turnover with Roast Potatoes and Gravy 🍷	Macaroni Cheese 🍷 🍷	Quorn Dippers with Chips 🍷
	OR	OR	OR	OR	OR	
	OPTION 3	Tomato Pasta Fresh, homemade Tomato Sauce with Wholewheat Pasta 🍷 🍷	Tomato Pasta Fresh, homemade Tomato Sauce with Wholewheat Pasta 🍷 🍷	Tomato Pasta Fresh, homemade Tomato Sauce with Wholewheat Pasta 🍷 🍷	Tomato Pasta Fresh, homemade Tomato Sauce with Wholewheat Pasta 🍷 🍷	Tomato Pasta Fresh, homemade Tomato Sauce with Wholewheat Pasta 🍷 🍷
HOT DISHES ARE SERVED WITH TWO VEGETABLES AND FRESHLY BAKED BREAD						
DELI	OPTION 4	Jacket Potato Choice of either Baked Beans, Cheese or Tuna	Baguettes Choice of either Ham, Cheese or Tuna 🍷	Jacket Potato Choice of either Baked Beans, Cheese or Tuna	Baguettes Choice of either Ham, Cheese or Tuna 🍷	Jacket Potato Choice of either Baked Beans, Cheese or Tuna
	DELI DISHES ARE SERVED WITH MIXED SALAD					
DESSERT		Banana Oat Bite 🍷	Lemon Cookie 🍷	Caramel Mousse	Chocolate Brownie 🍷	Strawberry Ice Cream



BAKED POTATOES SERVED DAILY
With a choice of toppings 🍷 🍷



AVAILABLE DAILY
Fresh fruit, salad, yoghurt and water

Chartwells
Schools

🍷 Vegetarian 🍷 Vegan 🍷 Oily Fish 🍷 Fruity! 🍷 Wholegrain 🍷 Nutritionist's Choice

Our menu is subject to change. Please be assured that all notified medical diets and allergy requirements will be safely catered for.

SPRING/SUMMER 2026 MENU

WEEK 3

W/C: 27/04/2026, 18/05/2026, 15/06/2026, 06/07/2026, 27/07/2026

		MONDAY	TUESDAY	WEDNESDAY	THURSDAY	FRIDAY
HOT DISHES	OPTION 1	Cheese and Tomato Pizza with Pasta Salad 🍷 🍷	All Day Breakfast with Potato Wedges	Roast Chicken with Roast Potatoes and Gravy 🍷	Lasagne with Garlic Bread 🍷 🍷	Fish Fingers with Chips
		OR	OR	OR	OR	OR
	OPTION 2	Veggie Meat Feast Pizza with Pasta Salad 🍷 🍷	Cheesy Bean Burrito with Wholegrain Rice 🍷 🍷 🍷	Vegetarian Cottage Pie with Gravy 🍷 🍷	Vegetable Lasagne with Garlic Bread 🍷 🍷 🍷	Quorn Dippers with Chips 🍷
	OR	OR	OR	OR	OR	
	OPTION 3	Tomato Pasta Fresh, homemade Tomato Sauce with Wholewheat Pasta 🍷 🍷	Tomato Pasta Fresh, homemade Tomato Sauce with Wholewheat Pasta 🍷 🍷	Tomato Pasta Fresh, homemade Tomato Sauce with Wholewheat Pasta 🍷 🍷	Tomato Pasta Fresh, homemade Tomato Sauce with Wholewheat Pasta 🍷 🍷	Tomato Pasta Fresh, homemade Tomato Sauce with Wholewheat Pasta 🍷 🍷
HOT DISHES ARE SERVED WITH TWO VEGETABLES AND FRESHLY BAKED BREAD						
DELI	OPTION 4	Jacket Potato Choice of either Baked Beans, Cheese or Tuna	Baguettes Choice of either Ham, Cheese or Tuna 🍷	Jacket Potato Choice of either Baked Beans, Cheese or Tuna	Baguettes Choice of either Ham, Cheese or Tuna 🍷	Jacket Potato Choice of either Baked Beans, Cheese or Tuna
	DELI DISHES ARE SERVED WITH MIXED SALAD					
DESSERT		Custard Shortbread with Melon Wedges 🍷	Strawberry Jelly	Chocolate Mousse	Vanilla Ice Cream	Banana Flapjack 🍷



BAKED POTATOES SERVED DAILY
With a choice of toppings 🍷 🍷



AVAILABLE DAILY
Fresh fruit, salad, yoghurt and water

Chartwells
Schools

🍷 Vegetarian 🍷 Vegan 🍷 Oily Fish 🍷 Fruity! 🍷 Wholegrain 🍷 Nutritionist's Choice

Our menu is subject to change. Please be assured that all notified medical diets and allergy requirements will be safely catered for.



Respect Charter

at Brighstone CE Aided Primary School

At Brighstone CE Aided Primary School we believe staff, parents and children are entitled to a safe and protective environment in which to learn and work. We strive to ensure that our school offers a warm and nurturing environment. All members of the school community and visitors should demonstrate mutual respect, to feel safe, work together and to use restorative approaches as the foundation of our practice. Any behaviour that may lead to feelings of harassment, alarm or distress to members of our community, will not be tolerated and action taken.

Expectations

- o That all adults set a good example to children at all times, showing them how to get along with all members of the school and the wider community.
- o That no one - staff, governors, parents, carers, volunteers or children - be subjected to abusive behaviour or any form of threats from visitors on the school premises.
- o That physical attacks and threatening behaviour, abusive or insulting language verbal or written (including on social media), to staff, governors, parents, carers, volunteers, children and other users of the school premises will not be tolerated and may lead to a ban from school premises and/or police action.

Types of behaviour that are considered serious and unacceptable

This is not an exhaustive list but seeks to provide illustrations of such behaviour:

- o Shouting, either in person or over the telephone
- o Speaking in an aggressive/threatening tone
- o Physically intimidating, e.g. standing very close
- o The use of aggressive hand gestures/exaggerated movements
- o Physical threats
- o Shaking or holding a fist towards another person
- o Swearing and name calling
- o Pushing
- o Slapping, punching, hitting or kicking
- o Racist, homophobic or other hateful behaviour
- o Sexist comments or sexual innuendo
- o Disrespecting religion or belief
- o Inappropriate communications (posting on Social Networking sites, emails or letters, etc.) which could bring the school into disrepute or be deemed as bullying, harassment and/or a hate-related

The school reserves the right to take any necessary actions to ensure that members of the school community are not subjected to any form of abuse in line with policy and procedure. If you choose to engage in these behaviours you may be asked to leave the site or the police may be called.

Thank you for your understanding and support

If your message is **urgent** or about **attendance** contact Mrs Pelosi in the **office**:
01983 740285
office@brighstoneprimary.org.uk
Office Hours 8am - 4pm

If you would like to speak with the **Headteacher** Mrs Lennon, you can find her at the school gate every morning or you can call 740285 to make an appointment with her



For **general enquiries** you can call or email the office, text the school messaging service or send a message to our school **Facebook** page: <https://www.facebook.com/BrighstoneCEPrimarySchool>
Our Facebook page is open so you do not need a personal account to view it

If you would like to contact your child's class teacher, you can email them at the following email addresses. Please allow at least one working day for a reply. For anything urgent, please contact the school office.

Year R - teacher.flowerbee@brighstoneprimary.org.uk
Year 1/2 - teacher.bumblebee@brighstoneprimary.org.uk
Year 3/4 - teacher.honeybee@brighstoneprimary.org.uk
Year 5/6 - teacher.ivybee@brighstoneprimary.org.uk
The Nest resourced provision - thenest@brighstoneprimary.org.uk

If you have concern regarding **safeguarding** or your **child's mental health and wellbeing** please contact Mrs Jones. You can speak to her on the playground every morning, call into the school office or email m.jones@brighstoneprimary.org.uk
safeguarding@brighstoneprimary.org.uk

Our **Newsletter** is published every Friday with key information for parents and carers. You can find it on our school website: <https://www.brighstoneprimary.org.uk/category/the-buzz/>

Contact us



If you have a **safeguarding** concern about a child outside of school hours you can call the police on 999 if you feel they are at risk of immediate harm or contact Children's Services on 0300 300 0117

Please be reminded that all children need to wear the correct PE kit on PE days.
The correct PE kit is also needed for sports clubs.
Socks and hair accessories must be in the school colours.

School Day Timings

The school day is as follows:

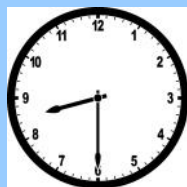
8.25am: Gates open

8.30am: School starts

3pm: School ends

3.10pm: Gates close

Many thanks.





School Term Dates for 2025-2026

Mon 20th - Thurs 23rd April:	Y6 mock SATs
Tuesday 28th April:	Relax Kids workshop (see email)
Thursday 30th April:	Bumble Bee trip to the Blue Reef Aquarium
Saturday 9th May:	Wolverton Folk and Blues Fair (BSA tea tent)
Sunday 10th May:	Walk the Wight
Mon 11th - Thurs 14th May:	Y6 SATs
Friday 22nd May:	Last day of term
Monday 1st June:	INSET day - school closed
Tuesday 2nd June:	Back to school
Friday 5th June:	Careers Day
Saturday 13th June:	Shorwell Midsummer Fair (country dancing)
Thurs 18th - Friday 19th June:	Y4 residential
Monday 29th June - Wednesday 1st July:	Y6 residential
Friday 3rd July:	Y6 Leavers' Service in Portsmouth Cathedral
Tuesday 7th July:	Transition Day
Wednesday 8th July:	Sports Day
Friday 10th July:	Reports sent home
Tuesday 14th July:	Parents Evening
Friday 17th July:	BSA Summer Sizzler
Saturday 18th July:	BHS Summer Show (country dancing)
Friday 24th July:	Last day of term; Summer Shindig

Please note that the school will be closed on the following days in this academic year:

Day 4:	Monday 1st June 2026
Day 5:	Monday 27th July 2026