

# The Buzz

## 6th February 2026



Learning and Achieving Through Love,  
Courage and Respect

Dear parents, carers and children,



Today, you will have received a letter detailing some recent and upcoming **staffing updates**. Please do look out for this. We are extending a warm Brighstone welcome to Mrs Michaela Plant, who will be joining our team as a tutor as well as a cover teacher/TA. We will be welcoming back Mrs Baker after half term, who will be joining Bumble Bee class as part of a job-share arrangement with Miss Sztypuljak, and Mrs Jones has got a new job title that better reflects her role in school. Please see the letter for more details.



On Wednesday, I took our **EARA group** to Gurnard Primary School for the termly EARA meeting with other schools. We explored how we are all unique in lots of different ways, and that we can all bring something different to our school community. We used a salad bowl as a metaphor: a salad has lots of different ingredients, but each one has a distinct flavour. We then thought about what our salad dressing is that binds us all together. We thought of respect, helpfulness, humour, in-jokes, bees and hives, and more!

Tonight sees the **BSA quiz** taking place at Wilberforce Hall at 6pm. Mrs Jones is quiz master, and she has got some challenging and fun questions to test your knowledge and memory! There are just a handful of tables left; please contact the BSA if you would like to book a table for your team.

### Class news

"This week in **Bumble Bee class**, we have started our learning journey of 'Handa's Surprise'. There are lots of different fruits in the story and so the children had a try of some of them. There were lots of 'yummy' noises and smiley faces and also some 'not-so-yummy' ones! Can they tell you what their favourite fruit was? Which fruit were they not so keen on? Miss Sztypuljak



"**Flower Bee class** have had a really active week this week. We've been dancing to different music, doing Dough Disco, squiggling with chalks outside and making new pompoms today. All of this movement, as well as running, climbing, carrying heavy things and balancing, helps with our core stability and is actually one of the Early Years ways of doing handwriting." Mrs Cousins

"Flo is **Ivy Bee's** next recipient of a pen licence this week. Her handwriting is exceptional and she now has permission to write in pen in all the books (except Maths books). Well done to Flo!" Mrs Sharp

### Reminders

**Hair accessories and socks** must be in the school colours. **Water bottles** must only contain water.

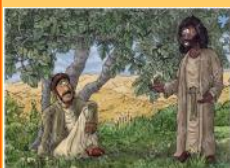
I hope everyone has a lovely weekend.

With best wishes, Mrs Lennon and the Brighstone team



# Collective Worship

This half term, the theme is People Jesus Meets. This week, we have been learning about Nathaniel. Our value this week is community.



Jesus knew that there would come a time when he would go to be with his Father in heaven and his work on earth would be continued by his small community of disciples. One of these disciples was called Nathaniel (who was also known as Bartholomew in some gospels). He knew that Jesus was the son of God

when he saw him.

The twelve disciples left everything behind and followed Jesus. Together, they formed the first Christian community. We explored other people who have also followed Jesus and served others.



Can you find out a bit more information about some of these inspirational people?

Lord Jesus,

we thank you for the saints down the ages,  
starting with the twelve disciples,  
who left everything to follow you and serve others.

Give us your wisdom and insight  
to know how we too can make a difference,  
and change the world for good.

Amen



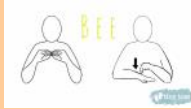

## Inclusion

Welcome to our inclusion section! Each week, we share a Makaton sign and Widgit symbol, as part of our inclusive ethos.

This week, our word is:

bee

<https://www.youtube.com/watch?v=ZdB8zgowDNw>

Makaton sign	Widgit symbol
	

## Poetry Corner

### The Quiz Wiz

Pens are poised, the room is still,  
Testing out our brainy skill.  
"What is green?" "What grows in space?"  
A smile lights up my eager face.  
I know the answer, hear me shout,  
That is what this quiz is about!

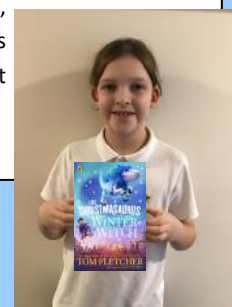


## Reading Recommendations

Each week, we include a book recommendation from a child and/or adult.

This week, Oskar recommends *Christmasaurus* and the *Winter Witch* by Tom Fletcher.

I recommend this book because it's all about Christmas, and if you love Christmas you're going to love the books. There is more than one in the series. The first one is *Christmasaurus* and it's mostly about the main character William and he's just meeting Santa in that book. In the second one (*Christmasaurus and the Winter Witch*), William finds a magic bean. He asks Santa what it is, and Santa says it's a magic bean and it can grow anything. The third book is *Christmasaurus and the Naughty List*, and it's about the *Christmasaurus* flying around trying to get most people on the nice list.



## Safeguarding

If you have a concern about a child you can call the police on 999 if you feel they are at risk of immediate harm.

### **Contact the NSPCC Helpline**

If you have any concerns at all about a child's safety or wellbeing, don't hesitate to contact us.

Call us or email [help@nspcc.org.uk](mailto:help@nspcc.org.uk)

**0808 800 5000**

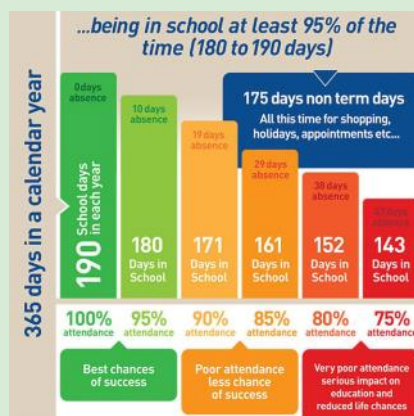
**Find out more**

You can contact the NSPCC:  
Or call children's services 01983 823435

## **Attendance Matters!**



Week Commencing 2nd February  
(Whole school attendance target: 96.5%)  
Actual Attendance: **92.78%**  
Late marks this week: **10**



<https://www.nhs.uk/live-well/is-my-child-too-ill-for->



# Golden Book

<b>Flower Bee</b>	<b>Kobe</b> and <b>Ivlee</b> for letting other people have a turn to talk and play games so that it is fair.
<b>Bumble Bee</b>	<b>Arlo T</b> for taking on Maths tasks independently and showing excellent skill at making his teen numbers in different ways. <b>Harvey</b> for having so much resilience in tasks now and taking on all the challenges asked of him, to make his work even better!
<b>Honey Bee</b>	<b>Bram</b> for super progress in his Maths reasoning, and for showing resilience on tricky days. <b>Theo F</b> for continued excellent effort and enthusiasm in maths; and for bravery in coping with difficulties and sadness.
<b>Ivy Bee</b>	<b>Luna</b> for the effort she has put into her spelling homework - practising and then correctly remembering them. <b>Oscar S</b> for his positive approach to learning.
<b>Bee-Haviour</b>	<b>Kaiden</b> for being a super friend and showing kindness to others.
<b>Sports Bee</b>	<b>Tahnee</b> for showing great effort and enthusiasm with her balances in gymnastics.





# Focus on Attendance

With the children, we discussed how regular attendance helps them:

- Make strong progress in their learning, as learning builds day by day
- Feel confident, independent and part of their class community
- Build friendships and support their wellbeing
- Develop positive routines and life skills such as punctuality and responsibility
- Build strong habits that support success now and in the future

We talked to the children about what “regular attendance” means and the many benefits it brings. We also reminded them that we understand illness does happen, and if a child has a temperature, or if it could be an infection, then they need to stay at home and rest until they are better or the risk of infecting others has passed. However, it is often those days when children feel a little unsure or reluctant at first, but are able to push through and come into school, that can make a real difference. As always, if a child is not well enough to be in school, we will contact families and ensure they are sent home to rest.

To help celebrate and encourage good attendance, we also introduced a whole school campaign for this term:

## **Be an attendance HERO (Here Everyday Ready On time)!**

- **For each full week of attendance, children will earn an entry into a draw - this gives children the opportunity to have up to 11 entries in the draw this term**
- **At the end of the term, one lucky winner will be chosen to receive a grand prize**

We appreciate that there can sometimes be challenges, and we encourage families to speak to us if there are any worries or barriers to attendance, we are always here to help.

Thank you for your continued support in helping every child have the best chance to learn, grow and succeed.





BRIGHSTONE SCHOOL ASSOCIATION PRESENTS

**FAMILY QUIZ NIGHT**

Friday 6th February at 6pm  
**Suitable from Age 4+**  
 Teams of five / £7 per team  
 Bring your own drinks and snacks  
 Bring a prize for the raffle on the night

**WILBERFORCE HALL, BRIGHSTONE**



The Brighstone School Association now receive 30% commission from Stikins every time you buy your new name labels.  
 Quote our number 2721 when you place an order.  
 A great way to keep your child's belongings safe and to support the school!  
<https://www.stikins.co.uk>

**Like Our Pages!**

**Facebook & Instagram**

**Search for  
Brighstone School  
Association**

**It's never too late to keep  
up with our latest news!**

*Parents,  
Family members  
& friends of Brighstone  
Primary School*

**Does your place of  
work offer the Match  
Funding Scheme?**

Get in touch with us if your employers could help our BSA fundraisers via email at [brighstoneschoolassoc@gmail.com](mailto:brighstoneschoolassoc@gmail.com)

## BSA Astra Recycling Clothing Bank

### We take...

Clothes,  
Shoes,  
Bed Linen,  
Accessories  
(Such as  
belts, hats  
& handbags)  
Soft Toys



### We can't take...

Duvets or  
Cushions,  
Off Cuts,  
Carpet or  
Curtains

Located in school entrance car park

Proud to support  
The National Year  
of Reading 2026.

GO  
ALL  
IN.

**The National Year of Reading: Go All In** campaign is an exciting initiative designed to inspire a **love of reading** and encourage everyone to fully immerse themselves in books and stories. By promoting **reading for pleasure**, sharing a wide range of texts, and celebrating reading in all its forms, the campaign aims to boost **confidence, creativity, and comprehension**. Go All In encourages children to **explore new genres**, take risks with their reading choices, and **develop lifelong reading habits** that support learning across the curriculum and beyond. Reading is essential for **developing language, imagination, and understanding of the world**. It supports children's vocabulary, comprehension, and communication skills, while also helping to build concentration and confidence. Regular reading encourages **curiosity, empathy, and creativity**, and lays a **strong foundation for success** across all areas of learning and throughout life.

Reading doesn't just mean books. It includes stories, ideas and information in print, digital and audio – from graphic novels and lyrics to articles, podcasts and games.

We are always encouraging reading for pleasure, and we will plan some events throughout the year as part of this national campaign. We welcome and value your support in this. Watch this space!

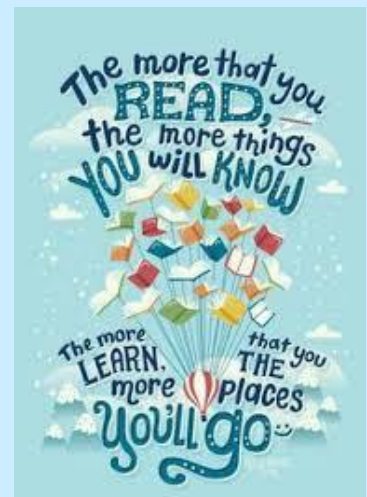


"Reading is to the mind what  
exercise is to the body."  
– Richard Steele

LittleYellowStar

"I do believe  
something very magical  
can happen when you  
read a good book."

–J.K. Rowling



Remember to send in photos of you  
reading! We'd love to see them!



## School Dinners

Children in **Year R, 1 and 2** are entitled to a 'universal' **free** school meal every day.

Children in Years 3-6 are charged at **£3.35** per day.

**Please note the dates to see which week to look at.**



**ARE YOU A WINNER?**

Every Thursday, check under your plate for a winner sticker!

1. Clear your plate
2. Check if you have a sticker
3. If you do, show a member of kitchen staff
4. Collect your prize

Chartwells Schools **Good luck!**

See p9 for the menu changes on Tuesday 10th and Thursday 12th February for Pancake Day and Lunar New Year.

AUTUMN/WINTER 2025 MENU		WEEK 1				
		MONDAY	TUESDAY	WEDNESDAY	THURSDAY	FRIDAY
HOT DISHES	OPTION 1	Cheese and Tomato Pizza with Potato Wedges 🌱	Beef Bolognese with Wholewheat Pasta 🍖🍷	Roast Pork with Roast Potatoes and Gravy	Chinese Sticky Lemon Chicken with Wholegrain Rice 🍷	Fish Fingers with Chips
	OPTION 2	BBQ Vegetable Wrap with Potato Wedges 🌱🍷	Vegetarian Bolognese with Wholewheat Pasta 🌱🍷	Roast Quorn with Roast Potatoes and Gravy 🌱	Cheesy Vegetable Hotpot 🌱	Quorn Dippers with Chips 🌱
	OPTION 3	Tomato Pasta Fresh, homemade Tomato Sauce with Penne Pasta 🌱🍷	Tomato Pasta Fresh, homemade Tomato Sauce with Penne Pasta 🌱🍷	Tomato Pasta Fresh, homemade Tomato Sauce with Penne Pasta 🌱🍷	Tomato Pasta Fresh, homemade Tomato Sauce with Penne Pasta 🌱🍷	Tomato Pasta Fresh, homemade Tomato Sauce with Penne Pasta 🌱🍷
HOT DISHES ARE SERVED WITH TWO VEGETABLES AND FRESHLY BAKED BREAD						
DELI	OPTION 4	Jacket Potato with a Choice of Toppings 🌱🍷	Ham, Cheese or Tuna Baguette with Mixed Salad 🌱	Jacket Potato with a Choice of Toppings 🌱🍷	Ham, Cheese or Tuna Baguette with Mixed Salad 🌱	Jacket Potato with a Choice of Toppings 🌱🍷
		DELI DISHES ARE SERVED WITH MIXED SALAD				
DESSERT		Crunchy Apple Slice 🌱	Strawberry Shortcake Mousse	Apple Crumble with Custard 🌱	Chocolate Ice Cream	Oat Cookie 🌱
AVAILABLE DAILY						
Fresh fruit, salad, yoghurt and water						
🌱 Vegetarian   🌱 Vegan   🍷 Oily Fish   🍷 Fruity!   🍷 Wholegrain   🍷 Nutritionist's Choice						
Our menu is subject to change. Please be assured that all notified medical diets and allergy requirements will be safely catered for.						
		Chartwells Schools				

# AUTUMN/WINTER 2025 MENU

## WEEK 2

W/C 10/11/2025, 01/12/2025, 05/01/2026, 26/01/2026, 23/02/2026, 16/03/2026

		MONDAY	TUESDAY	WEDNESDAY	THURSDAY	FRIDAY
HOT DISHES	OPTION 1	Macaroni Cheese 🌱	Pork Sausages with Mashed Potatoes and Gravy	Roast Chicken with Roast Potatoes and Gravy	Chicken and Vegetable Korma with Wholegrain Rice 🌱🐟	Battered Fish with Chips
	OPTION 2	Veggie Burrito with Wholegrain Rice 🌱🌱🐟	Vegetarian Sausage with Mashed Potatoes and Gravy 🌱	Sweet Potato, Chickpea and Herb Roast with Roast Potatoes and Gravy 🌱	Cheese and Tomato Pizza with Pasta Salad 🌱🐟	Quorn Dippers with Chips 🌱
	OPTION 3	Tomato Pasta Fresh, homemade Tomato Sauce with Penne Pasta 🌱🐟	Tomato Pasta Fresh, homemade Tomato Sauce with Penne Pasta 🌱🐟	Tomato Pasta Fresh, homemade Tomato Sauce with Penne Pasta 🌱🐟	Tomato Pasta Fresh, homemade Tomato Sauce with Penne Pasta 🌱🐟	Tomato Pasta Fresh, homemade Tomato Sauce with Penne Pasta 🌱🐟
HOT DISHES ARE SERVED WITH TWO VEGETABLES AND FRESHLY BAKED BREAD						
DELI	OPTION 4	Jacket Potato with a Choice of Toppings 🌱🐟	Ham, Cheese or Tuna Baguette with Mixed Salad 🌱	Jacket Potato with a Choice of Toppings 🌱🐟	Ham, Cheese or Tuna Baguette with Mixed Salad 🌱	Jacket Potato with a Choice of Toppings 🌱🐟
	DELI DISHES ARE SERVED WITH MIXED SALAD					
DESSERT		Chocolate Caramel Crunch	Banana Flapjack 🌱🌱	Chocolate Brownie 🌱	Raspberry Jelly 🌱	Strawberry Ice Cream



### AVAILABLE DAILY

Fresh fruit, salad, yoghurt and water

🌱 Vegetarian 🌱 Vegan 🐟 Oily Fish 🍌 Fruity! 🌾 Wholegrain 🍷 Nutritionist's Choice

Our menu is subject to change. Please be assured that all notified medical diets and allergy requirements will be safely catered for.



Chartwells  
Schools

WMA17/02/2025

# AUTUMN/WINTER 2025 MENU

## WEEK 3

W/C 17/11/2025, 08/12/2025, 12/01/2026, 02/02/2026, 02/03/2026, 23/03/2026

		MONDAY	TUESDAY	WEDNESDAY	THURSDAY	FRIDAY
HOT DISHES	OPTION 1	Cheese and Tomato Pizza with Pasta Salad 🌱🐟	Chicken and Broccoli Pasta Bake With Garlic Bread 🌱🐟	Roast Gammon with Roast Potatoes and Gravy	BBQ Chicken with Rainbow Rice	Fish Fingers with Chips
	OPTION 2	Veggie Meat Feast Pizza with Pasta Salad 🌱🐟	Macaroni Cheese 🌱	Vegetable Pastry Slice with Roast Potatoes and Gravy 🌱	Spanish Vegetable Rice 🌱🌱	Quorn Dippers with Chips 🌱
	OPTION 3	Tomato Pasta Fresh, homemade Tomato Sauce with Penne Pasta 🌱🐟	Tomato Pasta Fresh, homemade Tomato Sauce with Penne Pasta 🌱🐟	Tomato Pasta Fresh, homemade Tomato Sauce with Penne Pasta 🌱🐟	Tomato Pasta Fresh, homemade Tomato Sauce with Penne Pasta 🌱🐟	Tomato Pasta Fresh, homemade Tomato Sauce with Penne Pasta 🌱🐟
HOT DISHES ARE SERVED WITH TWO VEGETABLES AND FRESHLY BAKED BREAD						
DELI	OPTION 4	Jacket Potato with a Choice of Toppings 🌱🐟	Ham, Cheese or Tuna Baguette with Mixed Salad 🌱	Jacket Potato with a Choice of Toppings 🌱🐟	Ham, Cheese or Tuna Baguette with Mixed Salad 🌱	Jacket Potato with a Choice of Toppings 🌱🐟
	DELI DISHES ARE SERVED WITH MIXED SALAD					
DESSERT		Chocolate Marble Cake 🌱	Apple Crumble with Custard 🌱	Lemon Cookie 🌱	Crunchy Chocolate Mousse	Strawberry Jelly 🌱



### AVAILABLE DAILY

Fresh fruit, salad, yoghurt and water

🌱 Vegetarian 🌱 Vegan 🐟 Oily Fish 🍌 Fruity! 🌾 Wholegrain 🍷 Nutritionist's Choice

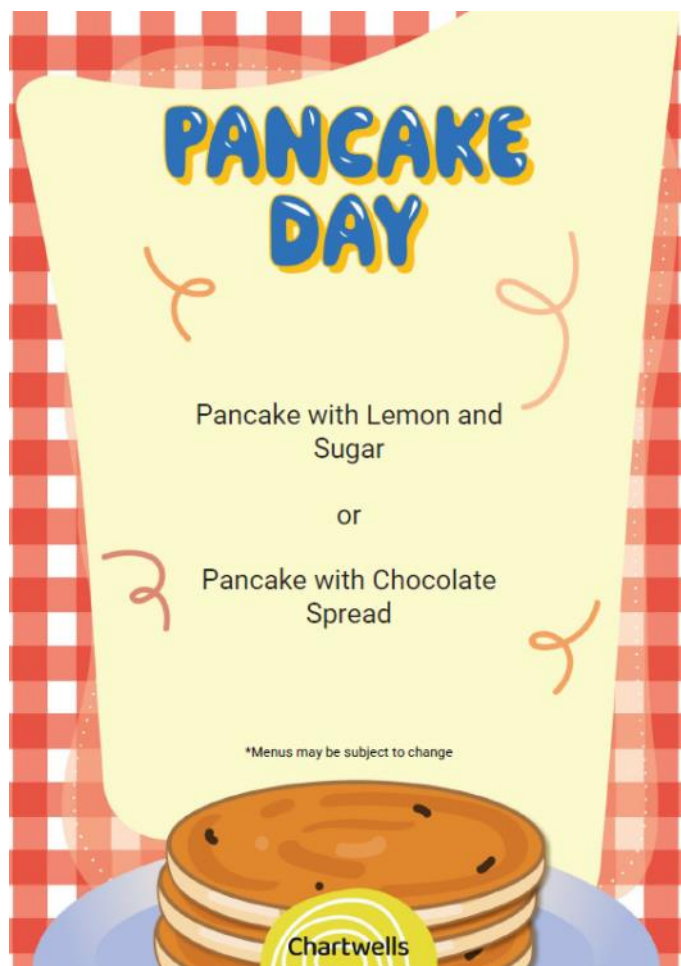
Our menu is subject to change. Please be assured that all notified medical diets and allergy requirements will be safely catered for.



Chartwells  
Schools

WMA17/02/2025









## Respect Charter

### at Brighstone CE Aided Primary School

At Brighstone CE Aided Primary School we believe staff, parents and children are entitled to a safe and protective environment in which to learn and work. We strive to ensure that our school offers a warm and nurturing environment. All members of the school community and visitors should demonstrate mutual respect, to feel safe, work together and to use restorative approaches as the foundation of our practice. Any behaviour that may lead to feelings of harassment, alarm or distress to members of our community, will not be tolerated and action taken.

#### Expectations

- That all adults set a good example to children at all times, showing them how to get along with all members of the school and the wider community.
- That no one - staff, governors, parents, carers, volunteers or children - be subjected to abusive behaviour or any form of threats from visitors on the school premises.
- That physical attacks and threatening behaviour, abusive or insulting language verbal or written (including on social media), to staff, governors, parents, carers, volunteers, children and other users of the school premises will not be tolerated and may lead to a ban from school premises and/or police action.

#### Types of behaviour that are considered serious and unacceptable

This is not an exhaustive list but seeks to provide illustrations of such behaviour:

- Shouting, either in person or over the telephone
- Speaking in an aggressive/threatening tone
- Physically intimidating, e.g. standing very close
- The use of aggressive hand gestures/exaggerated movements
- Physical threats
- Shaking or holding a fist towards another person
- Swearing and name calling
- Pushing
- Slapping, punching, hitting or kicking
- Racist, homophobic or other hateful behaviour
- Sexist comments or sexual innuendo
- Disrespecting religion or belief
- Inappropriate communications (posting on Social Networking sites, emails or letters, etc.) which could bring the school into disrepute or be deemed as bullying, harassment and/or a hate-related

The school reserves the right to take any necessary actions to ensure that members of the school community are not subjected to any form of abuse in line with policy and procedure. If you choose to engage in these behaviours you may be asked to leave the site or the police may be called.

**Thank you for your understanding and support**

If your message is **urgent** or about **attendance** contact Mrs Pelosi in the **office**:  
**01983 740285**  
office@brighstoneprimary.org.uk  
Office Hours 8am - 4pm

If you would like to speak with the **Headteacher** Mrs Lennon, you can find her at the school gate every morning or you can call 740285 to make an appointment with her



For **general enquiries** you can call or email the office, text the school messaging service or send a message to our school **Facebook** page: <https://www.facebook.com/BrighstoneCEPrimarySchool>  
*Our Facebook page is open so you do not need a personal account to view it*

If you would like to contact your child's class teacher, you can email them at the following email addresses. Please allow at least one working day for a reply. For anything urgent, please contact the school office.

Year R - teacher.flowerbee@brighstoneprimary.org.uk  
Year 1/2 - teacher.bumblebee@brighstoneprimary.org.uk  
Year 3/4 - teacher.honeybee@brighstoneprimary.org.uk  
Year 5/6 - teacher.ivybee@brighstoneprimary.org.uk  
The Nest resourced provision - thenest@brighstoneprimary.org.uk

If you have concern regarding **safeguarding** or your **child's mental health and wellbeing** please contact Mrs Jones. You can speak to her on the playground every morning, call into the school office or email m.jones@brighstoneprimary.org.uk  
safeguarding@brighstoneprimary.org.uk

Our **Newsletter** is published every Friday with key information for parents and carers. You can find it on our school website: <https://www.brighstoneprimary.org.uk/category/the-buzz/>

## Contact us



If you have a **safeguarding** concern about a child outside of school hours you can call the police on 999 if you feel they are at risk of immediate harm or contact Children's Services on 0300 300 0117

Please be reminded that all children need to wear the correct PE kit on PE days.  
The correct PE kit is also needed for sports clubs.  
Socks and hair accessories must be in the school colours.

### School Day Timings

The school day is as follows:

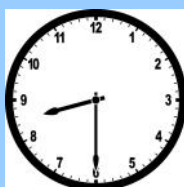
8.25am: Gates open

8.30am: School starts

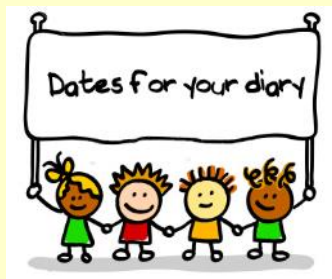
3pm: School ends

3.10pm: Gates close

Many thanks.







### **School Term Dates for 2025-2026**

Friday 13th February:	Last day of term
Monday 23rd February:	Back to school
Thursday 5th March:	World Book Day
Friday 13th March:	Chance to Shine Cricket Engagement Day (details to follow)
Monday 16th March:	Scholastic Book Fair all week
Tuesday 17th March:	Parents Evening (details to follow)
Wednesday 18th March:	Parents Evening (details to follow)
Friday 27th March:	Last day of term
Monday 13th April:	Back to school
Mon 11th - Thurs 14th May:	Y6 SATs
Friday 22nd May:	Last day of term
Monday 1st June:	INSET day - school closed
Tuesday 2nd June:	Back to school
Tuesday 7th July:	Transition Day
Wednesday 8th July:	Sports Day
Friday 10th July:	Reports sent home
Tuesday 14th July:	Parents Evening
Friday 24th July:	Last day of term

Please note that the school will be closed on the following days in this academic year:

Day 4: Monday 1st June 2026

Day 5: Monday 27th July 2026