

The Buzz

12th December



Brighstone C.E.
Primary School



Learning and Achieving Through
Love, Courage and Respect



Dear parents, carers and children,

[See more photos on Facebook!](#)

We had a fantastic time at the **pantomime** today. Oh no, we didn't! Oh yes, we did! (I had to, sorry...) The children were all very excited, and even those who were feeling a little anxious before the trip had a great time. The pantomime was Aladdin, and highlights include: getting soaked by the water guns; toilet rolls being thrown everywhere as part of annual The 12 Days of Christmas routine; 6 7 (to which all the adults groaned); Aladdin flying above the stage on the magic carpet (lots of discussion was had afterwards over how this magic was achieved); the hilarious Widow Twankey and her extraordinary costumes; and the amazing song and dance numbers, to which we were all singing and dancing to.



Last Saturday saw the BSA's **Christmas Fair**. It's great to see this event getting bigger each year, and we had so many stallholders this year that we used five different rooms around the school. It was a hive of activity as we welcomed many visitors from Brighstone's Christmas Tree Festival, and it was wonderful to see so many families — both current and from years past. A huge thank you to the BSA who organised and ran this event, and to the members of staff who helped out.

Our **Christmas Choir** had a busy schedule last weekend. They performed at Mottistone church, our Christmas Fair, IOW Pearl and the Stars of Wonder concert at St Mary's Church. Phew! They drew a really big crowd at the Christmas Fair, and their performances were very well-received. Well done to all, and thank you to Mrs Jones, Mrs Sharp and Carolyn H.



Thank you, also, to Peter Johnson who arranged the **Stars of Wonder concert**, in aid of SWAY and Brighstone Primary School. A fantastic £100 is coming our way from this event!



Earlier this week, **Flower Bee Class** received an email from Father Christmas asking them to help find Rudolph after he'd escaped from the North Pole. We got a tip off from a local resident this morning that he was in the village, so we bravely set out with carrots in hands to find him. We searched hedges and bushes and then, suddenly, there he was! Although we tried to persuade him to go back, he kept shaking his head, but when the children sang to him he couldn't resist dancing along and, in the end, after Ada-Olive's very emotive speech about how much we need him or Christmas can't happen, he agreed to return. Well done Flower Bees for saving Christmas!

Next week is a busy week in school. Our Christmas Concert performances take place on Monday evening and Tuesday afternoon, it is our Christmas Jumper Day on Tuesday, Wednesday sees the BSA's Secret Present room, our Christingle Service is on Thursday afternoon, and it is Christmas Dinner Day on Friday. Phew!

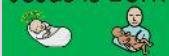
I hope you all have a lovely weekend.

With very best wishes, Mrs Lennon and the Brighstone team

Collective Worship

This half term, the theme is Advent and Christmas. This week, our focus is:

Jesus is Born



Value: Community



Some of our children re-enacted the story of the Nativity to a poem, being the angel Gabriel, Mary, Joseph, shepherds and the innkeeper. We thought about what each of these people might have said in their prayers. On Wednesday, Rev Jackie held a quiz with the children on the Nativity, and the children wowed her with their knowledge!



Dear God,

Thank you for guiding Mary and Joseph on their long journey to Bethlehem.

Help us remember that you are with us on every step of our journeys too.

Give us hearts that are patient, brave, and kind,

and help us follow your light just as they did.

Amen.



Inclusion

Welcome to our inclusion section! Each week, we will be sharing a Makaton sign and Widgit symbol, to help with our inclusive ethos.

This week, our word is:

Christmas tree

<https://www.youtube.com/watch?v=L1VniDtcGKw>

Makaton sign



Widgit symbol



Poetry Corner



Reading Recommendations

Each week, we include a book recommendation from a child and/or adult.

There is no Reading Recommendation this week due to being at the pantomime all day.

However, in the meantime, here is a great website with lots of recommended books for different age groups:

<https://www.booktrust.org.uk/book-recommendations/bookfinder/>



Safeguarding

If you have a concern about a child you can call the police on 999 if you feel they are at risk of immediate harm.

You can contact the NSPCC:

Contact the NSPCC Helpline

If you have any concerns at all about a child's safety or wellbeing, don't hesitate to contact us.

Call us or email help@nspcc.org.uk

0808 800 5000

Find out more

Or call children's services 01983 823435

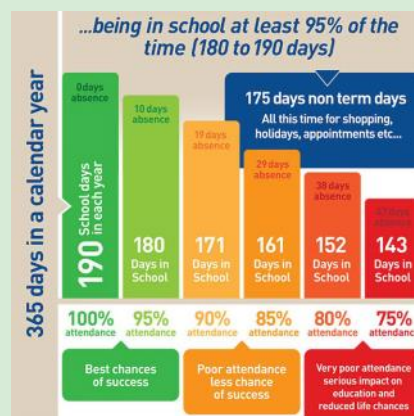
Attendance Matters!



Week Commencing 8th December
(Whole school attendance target: 96.5%)

Actual Attendance: 91.55%

Late marks this week: 8



<https://www.nhs.uk/live-well/is-my-child-too-ill-for-school/>





BSA Astra Recycling Clothing Bank

We take...

Clothes,
Shoes,
Bed Linen,
Accessories
(Such as
belts, hats
& handbags)
Soft Toys



We can't take...

Duvets or
Cushions,
Off Cuts,
Carpet or
Curtains

Located in school entrance car park

*Parents,
Family members
& friends of Brighstone
Primary School*

Does your place of work offer the Match Funding Scheme?

Get in touch with us if your employers could help our BSA fundraisers via email at brighstoneschoolassoc@gmail.com



The Brighstone School Association now receive 30% commission from Stikins every time you buy your new name labels.

Quote our number 2721 when you place an order.
A great way to keep your child's belongings safe and to support the school!

<https://www.stikins.co.uk>

Like Our Pages!



Facebook & Instagram

Search for
**Brighstone School
Association**

It's never too late to keep up with our latest news!



BRIGHSTONE CE AIDED PRIMARY SCHOOL

School Admissions

Every day is an open day

You are invited to have a tour of our wonderful school at a time that suits you. We welcome visits for Reception 2026 intake, and we also currently have spaces in Years 2, 3 and 4.

Please contact the school office to arrange a visit and an informal chat.

Contact Us :



01983 740285



office@brighstoneprimary.org.uk



www.brighstoneprimary.org.uk

You are also welcome to visit Brighstone Preschool. They offer childcare from 0-4, provide our wraparound care (breakfast and after school club) and offer a holiday club.

Learning and Achieving through Love, Courage and Respect

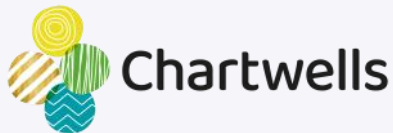


School Dinners

Children in **Year R, 1 and 2** are entitled to a 'universal' **free** school meal every day.

Children in Years 3-6 are charged at **£3.35** per day.

Please note the dates to see which week to look at.



ARE YOU A WINNER?

Every Thursday, check under your plate for a winner sticker!

1. Clear your plate
2. Check if you have a sticker
3. If you do, show a member of kitchen staff
4. Collect your prize

Chartwells Good luck!

AUTUMN/WINTER 2025 MENU		WEEK 1				
		MONDAY	TUESDAY	WEDNESDAY	THURSDAY	FRIDAY
HOT DISHES	OPTION 1	Cheese and Tomato Pizza with Potato Wedges 🌱	Beef Bolognese with Wholewheat Pasta 🍖 🌱	Roast Pork with Roast Potatoes and Gravy	Chinese Sticky Lemon Chicken with Wholegrain Rice 🍗 🌱	Fish Fingers with Chips
	OPTION 2	BBQ Vegetable Wrap with Potato Wedges 🌱 🍗	Vegetarian Bolognese with Wholewheat Pasta 🌱 🍗	Roast Quorn with Roast Potatoes and Gravy 🌱	Cheesy Vegetable Hotpot 🌱	Quorn Dippers with Chips 🌱
	OPTION 3	Tomato Pasta Fresh, homemade Tomato Sauce with Penne Pasta 🌱 🍗	Tomato Pasta Fresh, homemade Tomato Sauce with Penne Pasta 🌱 🍗	Tomato Pasta Fresh, homemade Tomato Sauce with Penne Pasta 🌱 🍗	Tomato Pasta Fresh, homemade Tomato Sauce with Penne Pasta 🌱 🍗	Tomato Pasta Fresh, homemade Tomato Sauce with Penne Pasta 🌱 🍗
HOT DISHES ARE SERVED WITH TWO VEGETABLES AND FRESHLY BAKED BREAD						
DELI	OPTION 4	Jacket Potato with a Choice of Toppings 🍷 🌱	Ham, Cheese or Tuna Baguette with Mixed Salad 🌱	Jacket Potato with a Choice of Toppings 🍷 🌱	Ham, Cheese or Tuna Baguette with Mixed Salad 🌱	Jacket Potato with a Choice of Toppings 🍷 🌱
		DELI DISHES ARE SERVED WITH MIXED SALAD				
DESSERT		Crunchy Apple Slice 🌱	Strawberry Shortcake Mousse	Apple Crumble with Custard 🌱	Chocolate Ice Cream	Oat Cookie 🌱
AVAILABLE DAILY						
Fresh fruit, salad, yoghurt and water						
Vegetarian Vegan Oily Fish Fruity! Wholegrain Nutritionist's Choice						
Our menu is subject to change. Please be assured that all notified medical diets and allergy requirements will be safely catered for.						
		Chartwells				Schools

AUTUMN/WINTER 2025 MENU

WEEK 2

W/C 10/11/2025, 01/12/2025, 05/01/2026, 26/01/2026, 23/02/2026, 16/03/2026

		MONDAY	TUESDAY	WEDNESDAY	THURSDAY	FRIDAY
HOT DISHES	OPTION 1	Macaroni Cheese 🌱	Pork Sausages with Mashed Potatoes and Gravy	Roast Chicken with Roast Potatoes and Gravy	Chicken and Vegetable Korma with Wholegrain Rice 🌱🐟	Battered Fish with Chips
	OPTION 2	Veggie Burrito with Wholegrain Rice 🌱🌱🐟	Vegetarian Sausage with Mashed Potatoes and Gravy 🌱	Sweet Potato, Chickpea and Herb Roast with Roast Potatoes and Gravy 🌱	Cheese and Tomato Pizza with Pasta Salad 🌱🐟	Quorn Dippers with Chips 🌱
	OPTION 3	Tomato Pasta Fresh, homemade Tomato Sauce with Penne Pasta 🌱🐟	Tomato Pasta Fresh, homemade Tomato Sauce with Penne Pasta 🌱🐟	Tomato Pasta Fresh, homemade Tomato Sauce with Penne Pasta 🌱🐟	Tomato Pasta Fresh, homemade Tomato Sauce with Penne Pasta 🌱🐟	Tomato Pasta Fresh, homemade Tomato Sauce with Penne Pasta 🌱🐟
HOT DISHES ARE SERVED WITH TWO VEGETABLES AND FRESHLY BAKED BREAD						
DELI	OPTION 4	Jacket Potato with a Choice of Toppings 🌱🐟	Ham, Cheese or Tuna Baguette with Mixed Salad 🌱	Jacket Potato with a Choice of Toppings 🌱🐟	Ham, Cheese or Tuna Baguette with Mixed Salad 🌱	Jacket Potato with a Choice of Toppings 🌱🐟
	DELI DISHES ARE SERVED WITH MIXED SALAD					
DESSERT		Chocolate Caramel Crunch	Banana Flapjack 🌱🌱	Chocolate Brownie 🌱	Raspberry Jelly 🌱	Strawberry Ice Cream



AVAILABLE DAILY

Fresh fruit, salad, yoghurt and water

🌱 Vegetarian 🌱 Vegan 🐟 Oily Fish 🍌 Fruity! 🌾 Wholegrain 🍷 Nutritionist's Choice

Our menu is subject to change. Please be assured that all notified medical diets and allergy requirements will be safely catered for.



Chartwells
Schools

WMA17/02/2025

AUTUMN/WINTER 2025 MENU

WEEK 3

W/C 17/11/2025, 08/12/2025, 12/01/2026, 02/02/2026, 02/03/2026, 23/03/2026

		MONDAY	TUESDAY	WEDNESDAY	THURSDAY	FRIDAY
HOT DISHES	OPTION 1	Cheese and Tomato Pizza with Pasta Salad 🌱🐟	Chicken and Broccoli Pasta Bake With Garlic Bread 🌱🐟	Roast Gammon with Roast Potatoes and Gravy	BBQ Chicken with Rainbow Rice	Fish Fingers with Chips
	OPTION 2	Veggie Meat Feast Pizza with Pasta Salad 🌱🐟	Macaroni Cheese 🌱	Vegetable Pastry Slice with Roast Potatoes and Gravy 🌱	Spanish Vegetable Rice 🌱🌱	Quorn Dippers with Chips 🌱
	OPTION 3	Tomato Pasta Fresh, homemade Tomato Sauce with Penne Pasta 🌱🐟	Tomato Pasta Fresh, homemade Tomato Sauce with Penne Pasta 🌱🐟	Tomato Pasta Fresh, homemade Tomato Sauce with Penne Pasta 🌱🐟	Tomato Pasta Fresh, homemade Tomato Sauce with Penne Pasta 🌱🐟	Tomato Pasta Fresh, homemade Tomato Sauce with Penne Pasta 🌱🐟
HOT DISHES ARE SERVED WITH TWO VEGETABLES AND FRESHLY BAKED BREAD						
DELI	OPTION 4	Jacket Potato with a Choice of Toppings 🌱🐟	Ham, Cheese or Tuna Baguette with Mixed Salad 🌱	Jacket Potato with a Choice of Toppings 🌱🐟	Ham, Cheese or Tuna Baguette with Mixed Salad 🌱	Jacket Potato with a Choice of Toppings 🌱🐟
	DELI DISHES ARE SERVED WITH MIXED SALAD					
DESSERT		Chocolate Marble Cake 🌱	Apple Crumble with Custard 🌱	Lemon Cookie 🌱	Crunchy Chocolate Mousse	Strawberry Jelly 🌱



AVAILABLE DAILY

Fresh fruit, salad, yoghurt and water

🌱 Vegetarian 🌱 Vegan 🐟 Oily Fish 🍌 Fruity! 🌾 Wholegrain 🍷 Nutritionist's Choice

Our menu is subject to change. Please be assured that all notified medical diets and allergy requirements will be safely catered for.



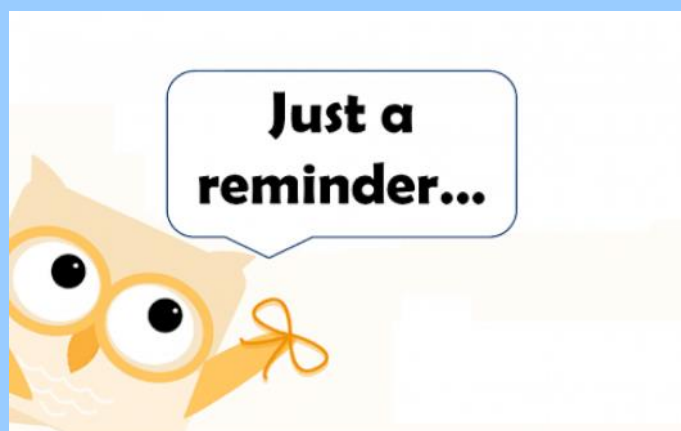
Chartwells
Schools

WMA17/02/2025

Reminders

- PE Kit is navy blue top/jumper/hoodie with navy blue bottoms - **Branded items are not permitted**
- All hair accessories, socks, shoes and trainers must be in the school colours: navy blue, grey, black or white (no novelty socks)
- All long hair must be tied back (pony tail, bun, plaits etc...) to avoid the spreading of head lice
- No jewellery to be worn other than stud earrings, which must be removed or taped over on PE days
- Gates open at 8.25am and are locked at 8.30am, and in the afternoon, gates are opened at 2.55pm and locked at 3.10pm
- **As teachers are busy welcoming and supervising children first thing in the morning, please could all messages be given to Mrs Pelosi in the office, who will then pass them on to the teacher**
- Only **water** is allowed in drinks bottles, and snacks must be fresh fruit only

Thank you!





Respect Charter

at Brighstone CE Aided Primary School

At Brighstone CE Aided Primary School we believe staff, parents and children are entitled to a safe and protective environment in which to learn and work. We strive to ensure that our school offers a warm and nurturing environment. All members of the school community and visitors should demonstrate mutual respect, to feel safe, work together and to use restorative approaches as the foundation of our practice. Any behaviour that may lead to feelings of harassment, alarm or distress to members of our community, will not be tolerated and action taken.

Expectations

- That all adults set a good example to children at all times, showing them how to get along with all members of the school and the wider community.
- That no one - staff, governors, parents, carers, volunteers or children - be subjected to abusive behaviour or any form of threats from visitors on the school premises.
- That physical attacks and threatening behaviour, abusive or insulting language verbal or written (including on social media), to staff, governors, parents, carers, volunteers, children and other users of the school premises will not be tolerated and may lead to a ban from school premises and/or police action.

Types of behaviour that are considered serious and unacceptable

This is not an exhaustive list but seeks to provide illustrations of such behaviour:

- Shouting, either in person or over the telephone
- Speaking in an aggressive/threatening tone
- Physically intimidating, e.g. standing very close
- The use of aggressive hand gestures/exaggerated movements
- Physical threats
- Shaking or holding a fist towards another person
- Swearing and name calling
- Pushing
- Slapping, punching, hitting or kicking
- Racist, homophobic or other hateful behaviour
- Sexist comments or sexual innuendo
- Disrespecting religion or belief
- Inappropriate communications (posting on Social Networking sites, emails or letters, etc.) which could bring the school into disrepute or be deemed as bullying, harassment and/or a hate-related

The school reserves the right to take any necessary actions to ensure that members of the school community are not subjected to any form of abuse in line with policy and procedure. If you choose to engage in these behaviours you may be asked to leave the site or the police may be called.

Thank you for your understanding and support

If your message is **urgent** or about **attendance** contact Mrs Pelosi in the **office**:
01983 740285
office@brighstoneprimary.org.uk
Office Hours 8am - 4pm

If you would like to speak with the **Headteacher** Mrs Lennon, you can find her at the school gate every morning or you can call 740285 to make an appointment with her



For **general enquiries** you can call or email the office, text the school messaging service or send a message to our school **Facebook** page: <https://www.facebook.com/BrighstoneCEPrimarySchool>
Our Facebook page is open so you do not need a personal account to view it

If you would like to contact your child's class teacher, you can email them at the following email addresses. Please allow at least one working day for a reply. For anything urgent, please contact the school office.

Year R - teacher.flowerbee@brighstoneprimary.org.uk
Year 1/2 - teacher.bumblebee@brighstoneprimary.org.uk
Year 3/4 - teacher.honeybee@brighstoneprimary.org.uk
Year 5/6 - teacher.ivybee@brighstoneprimary.org.uk
The Nest resourced provision - thenest@brighstoneprimary.org.uk

If you have concern regarding **safeguarding** or your **child's mental health and wellbeing** please contact Mrs Jones. You can speak to her on the playground every morning, call into the school office or email m.jones@brighstoneprimary.org.uk
safeguarding@brighstoneprimary.org.uk

Our **Newsletter** is published every Friday with key information for parents and carers. You can find it on our school website: <https://www.brighstoneprimary.org.uk/category/the-buzz/>

Contact us



If you have a **safeguarding** concern about a child outside of school hours you can call the police on 999 if you feel they are at risk of immediate harm or contact Children's Services on 0300 300 0117

Please be reminded that all children need to wear the correct PE kit on PE days.
The correct PE kit is also needed for sports clubs.
Socks and hair accessories must be in the school colours.

School Day Timings

The school day is as follows:

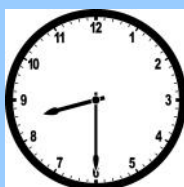
8.25am: Gates open

8.30am: School starts

3pm: School ends

3.10pm: Gates close

Many thanks.





School Term Dates for 2025-2026

Monday 15th December:	Christmas Concert in St Mary's Church 6pm - 7pm
Tuesday 16th December:	Christmas Concert in St Mary's Church 1.45pm - 2.45pm; Christmas Jumper Day
Thursday 18th December:	Christingle Concert in St Mary's Church 2pm
Friday 19th December:	Last day of term; Christmas Dinner day
Monday 5th January:	Back to school

Please note that the school will be closed on the following days in this academic year:

- Day 1: Monday 1st September 2025
- Day 2: Tuesday 2nd September 2025
- Day 3: Wednesday 3rd September 2025
- Day 4: Monday 1st June 2026
- Day 5: Monday 27th July 2026

Term dates are available on our school website: <https://www.brighstoneprimary.org.uk/calendar/>

This page is regularly updated.