

The Buzz

3rd October 2025



Learning and Achieving Through
Love, Courage and Respect

Dear parents, carers and children,

It feels like autumn has well and truly joined us. There are lovely autumnal colours all around, with crunchy leaves and acorns underfoot, and not to mention the rain! A reminder that children need their coats every day; even though some days are relatively mild, it can turn cold or wet pretty quickly.

This week has been a bit of a sporty week! Please see p2 for three match reports from Mr Goldsmith. Well done to all our teams!

Let's see what Bumble Bees have been up to this week:

"In Art and Design, Bumble Bees have been recapping skills they've already learnt from previous weeks. The children were fantastic at remembering the need to score the clay, in order to add decorations securely. They were also able to explain how to make slip. Here they are using their knowledge of joining clay, to make a clay tile with decorations and printing techniques."



"We have also been busy in Geography, learning about aerial photography and maps. The children were each given a map of our school playground. Their challenge was to add some key features onto their map. Can they tell you what they discovered?"



Thank you to Miss Sztypuljak for these write-ups.

Attendance

I have received some holiday requests for term time. Whilst I am aware of each family's circumstances, and understand the positive experiences that holidays can provide, taking holidays during term time can negatively impact children's education by disrupting their learning. All learning is cumulative, which means that if a child misses a few lessons, this can really affect their understanding when they return, leading to gaps in knowledge and possibly losing confidence. Absences also impact the school as a whole by disrupting the collective learning environment and requiring extra support for absent children when they return. While a holiday can be cheaper during term time, this is not considered a justifiable reason for absence. Please do consider these points when looking at holiday dates. Thank you.

I hope you have a lovely weekend.

With very best wishes, Mrs Lennon and the Brighstone team

| Attendance MATTERS | | |
|--------------------|-----------|-----------------|
| 100% | Excellent | 1 Day Missed |
| 99% | Good | 2 Days Missed |
| 98% | Good | 3 Days Missed |
| 97% | Good | 4 Days Missed |
| 96% | Good | 5 Days Missed |
| 94% | Good | 7 Days Missed |
| 93% | Good | 8 Days Missed |
| 91% | Good | 10 Days Missed |
| 89% | Good | 12 Days Missed |
| 87% | Good | 14 Days Missed |
| 85% | Good | 16 Days Missed |
| 83% | Good | 18 Days Missed |
| 81% | Good | 20 Days Missed |
| 79% | Good | 22 Days Missed |
| 77% | Good | 24 Days Missed |
| 75% | Good | 26 Days Missed |
| 73% | Good | 28 Days Missed |
| 71% | Good | 30 Days Missed |
| 69% | Good | 32 Days Missed |
| 67% | Good | 34 Days Missed |
| 65% | Good | 36 Days Missed |
| 63% | Good | 38 Days Missed |
| 61% | Good | 40 Days Missed |
| 59% | Good | 42 Days Missed |
| 57% | Good | 44 Days Missed |
| 55% | Good | 46 Days Missed |
| 53% | Good | 48 Days Missed |
| 51% | Good | 50 Days Missed |
| 49% | Good | 52 Days Missed |
| 47% | Good | 54 Days Missed |
| 45% | Good | 56 Days Missed |
| 43% | Good | 58 Days Missed |
| 41% | Good | 60 Days Missed |
| 39% | Good | 62 Days Missed |
| 37% | Good | 64 Days Missed |
| 35% | Good | 66 Days Missed |
| 33% | Good | 68 Days Missed |
| 31% | Good | 70 Days Missed |
| 29% | Good | 72 Days Missed |
| 27% | Good | 74 Days Missed |
| 25% | Good | 76 Days Missed |
| 23% | Good | 78 Days Missed |
| 21% | Good | 80 Days Missed |
| 19% | Good | 82 Days Missed |
| 17% | Good | 84 Days Missed |
| 15% | Good | 86 Days Missed |
| 13% | Good | 88 Days Missed |
| 11% | Good | 90 Days Missed |
| 9% | Good | 92 Days Missed |
| 7% | Good | 94 Days Missed |
| 5% | Good | 96 Days Missed |
| 3% | Good | 98 Days Missed |
| 1% | Good | 100 Days Missed |

More photos are available on our Facebook page.

Collective Worship

This week, our focus is Jesus' words:

Do not judge others



Value: Community



Jesus often taught his followers using picture language, hyperbole and humour. We acted out the story of The Plank, where we learnt about hypocrisy.

Jesus was saying that we need to look to our own shortcomings before judging what others have done wrong. Sometimes, we even criticize people for doing something that we are actually guilty of doing ourselves!

Judging and criticising people in front of others can make them feel sad or angry. It can spoil friendships and turn people in a community against one another.

Ask God to help you see the good in others and not the bad.

Father God, with your help I will try to ...

Praise instead of complain

Encourage instead of criticise

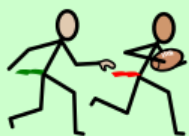
Be thankful instead of moaning

Be interested instead of ignoring

Listen instead of talking all the time.

Amen





Sports Special

We have had a busy week for sport this week, so here are some fantastic match reports courtesy of Mr Goldsmith.

Well done to everyone involved!



U11 Boys' Tag Rugby

On Monday, our U11 Boys' Tag Rugby team travelled to Broadlea Primary School for their tag rugby tournament. The boys faced a tough opener vs The Bay, which saw our opponents win 2-0, before just being defeated 2-1 by Newchurch, Freddie with the try. Hugh was on the scoresheet in a 1-1 draw with Broadlea, before he scored a hat-trick vs Bembridge B, Dan also scoring a try in a 4-4 draw. The penultimate game saw us beaten 2-1 by Gatten & Lake, Hugh with the try, before a 2-2 draw with Niton to finish the tournament, Freddie and Hugh with the points.



U9 Football

Wednesday saw our U9s play their first football games of the season at Shalfleet Primary School. A tricky match versus our hosts was up first, with Shalfleet going into half-time with a 5-0 lead. However, the team showed great teamwork, determination and resilience in the second half, with Shalfleet finding it much tougher to break us down, the game finishing 7-0. The team continued to improve in the second game, this time against Freshwater & Yarmouth. There were goals from Evan and Noah H to make the game 2-2. With minutes to spare, a great shot from Rufus agonisingly struck the post to deny us victory, a brilliant match ending 2-2. It was fantastic to see the team sticking together throughout the afternoon and learning through playing. There were some great performances on show across the pitch and the confidence and skills grew more and more as the games went on.



U11 Girls' Tag Rugby

Yesterday was our U11 Girls' chance to shine on the rugby pitch, an opportunity they grabbed with both hands. The opening game of the tournament saw us suffer a heavy 5-1 defeat at the hands of Bembridge A, Maddie with the try. However, the girls didn't let their heads drop and put in a brilliant performance next up to beat Godshill 5-3 - a hat-trick for Maddie plus a brace for Lilli. We then defeated Bembridge B by the same scoreline, Lilli and Maddie with another two tries apiece, with Flo also on the scoresheet. A thrilling match vs Northwood followed, with some outstanding rugby on show from both teams. The match ended 3-3 with tries for Helena, Maddie and Flo. More excitement followed with an incredible 5-5 draw against Niton - Maddie took her tally of tries for the day up to eleven with another four, plus Violet grabbed her first of the afternoon. In the final match, Maddie scored another hat-trick, with Flo getting a third try of the afternoon to help defeat Priory 4-2. The results meant that the girls finished second out of the seven teams, qualifying for the Isle of Wight Finals at Wootton Rec on Thursday 16th October, a much deserved reward for the skill, behaviour and teamwork shown by every single member of the squad.





Inclusion

Welcome to our new inclusion section! Each week, we will be sharing a Makaton sign and Widgit symbol, to help with our inclusive ethos.

This week, our phrase is:

good morning

<https://www.youtube.com/watch?reload=9&app=desktop&v=5XtH1Q3T0Eg>

| Makaton sign | Widgit symbol |
|-------------------------------------------------------------------------------------|-------------------------------------------------------------------------------------|
|  |  |

Poetry Corner

Leaves

by Elsie N. Brady

How silently they tumble down
And come to rest upon the ground
To lay a carpet, rich and rare,
Beneath the trees without a care,
Content to sleep, their work well done,
Colors gleaming in the sun.

At other times, they wildly fly
Until they nearly reach the sky.
Twisting, turning through the air
Till all the trees stand stark and bare.
Exhausted, drop to earth below
To wait, like children, for the snow.

Reading Recommendations

Each week, we include a book recommendation from a child and/or adult.

This week, Annie recommends *The Twits* by Roald Dahl.

I like this book because it's funny and it's about two people who play tricks on each other and, at the end, they get stuck by their heads on the floor.

I recommend this book because it has a lot of funny stuff in it and it will make you laugh.



Safeguarding

If you have a concern about a child you can call the police on 999 if you feel they are at risk of immediate harm

You can contact the NSPCC:

Contact the NSPCC Helpline

If you have any concerns at all about a child's safety or wellbeing, don't hesitate to contact us.

Call us or email help@nspcc.org.uk

0808 800 5000

Find out more

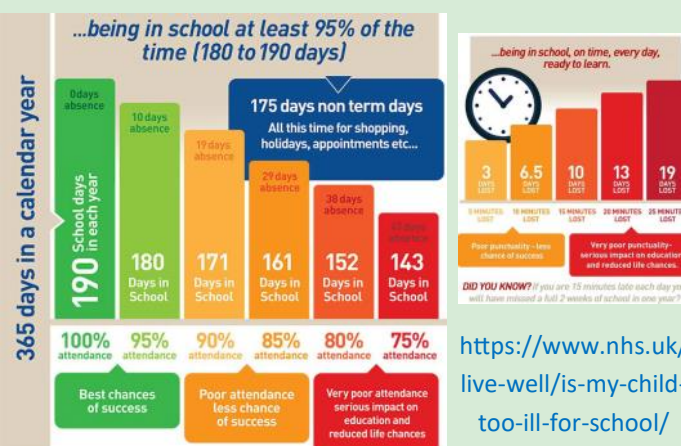
Or call children's services 01983 823435

Attendance Matters!

Week Commencing 29th September
(Whole school attendance target: 96.5%)

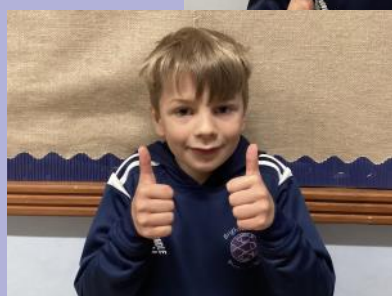
Actual Attendance: **95.51%**

Late marks this week: 4



Golden Book

| | |
|--------------------|----------------------------------------------------------------------------------------------------------------------------------------------------------------------------------------------------------------------------------------------------------------------------------------------------------------------------------------------------------------------------------------------------------------------------------------------------------------------------------------------------------------------------------------------------------------------------------------------------------------------------------|
| Flower Bee | Theo for amazing Fred Talk and having a go at reading words with his magnet board. |
| Bumble Bee | Arloh has made such an improvement in his behaviour and attitude towards school life. He is now often the first to help tidy the classroom after 'busy bee time' and asking what else he can do. He has a fantastic attitude towards learning and is willing to take on new challenges every day. We're so proud of you Arloh; keep it up! George for showing a real change in attitude towards learning, since the start of the year. George is constantly taking on new challenges every day and is often the first in class to be sat down and ready to learn. We're super proud of you, George; keep it up! |
| Honey Bee | Nathan for engaging so enthusiastically in Geography and demonstrating excellent understanding of the key vocabulary. Noah H for a fantastic attitude to learning in all subjects this week, working hard and offering thoughtful contributions to our class discussions. |
| Ivy Bee | Helena for taking responsibility to regulate her emotions. Fred C for being very helpful, spotting things that need doing around the class and sorting them out! |
| Bee-Haviour | Ellie for showing the courage to come into school in the mornings, even when she is sometimes feeling a little worried, and for being really eager to do her homework when she gets home! |
| Sports Bee | Noah B, William, Rufus, Theodore H, Tristan, Noah H, Evan, Ellie, Skye M and Nathan for showing fantastic team work and determination in their first football matches of the year. |





BSA Astra Recycling Clothing Bank

We take...

Clothes,
Shoes,
Bed Linen,
Accessories
(Such as
belts, hats
& handbags)
Soft Toys



We can't take...

Duvets or
Cushions,
Off Cuts,
Carpet or
Curtains

Located in school entrance car park

*Parents,
Family members
& friends of Brighstone
Primary School*

**Does your place of
work offer the Match
Funding Scheme?**

Get in touch with us if your employers could
help our BSA fundraisers via email at
brighstoneschoolassoc@gmail.com



The Brighstone School Association now
receive 30% commission from Stikins every
time you buy your new name labels.

Quote our number 2721 when you place an order.
A great way to keep your child's belongings safe and
to support the school!

<https://www.stikins.co.uk>

Like Our Pages!



Facebook & Instagram

**Search for
Brighstone School
Association**

**It's never too late to keep
up with our latest news!**

Plea for donations of plants!



At Brighstone, we have been developing our classrooms into calmer, more neutral 'therapeutic classrooms'. A **huge thank you** to everyone who has donated neutral cushions, table lamps and plants. It has really helped to make a difference across the school.

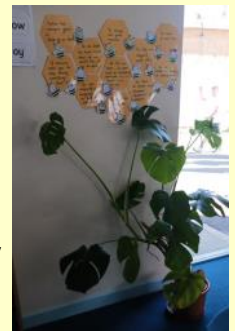


"Therapeutic classrooms are a new approach that redefines the traditional classroom set up. The average UK classroom is bright, cluttered, overwhelming and outdated, and is not designed around the needs of our children today."

Children deserve to feel comfortable, safe and inspired, especially when we know there has been a rise in the numbers of children struggling with their social, motional and mental health. Teachers up and down the country are reporting increases in school refusal, dysregulated behaviours, disengagement and low social skills. Making changes to the classroom can help."

What is a therapeutic classroom?

"Therapeutic classrooms are welcoming, safe, inviting environments that cultivate learning through their design. They calm stress hormones and increase feelings of emotional safety, whilst meeting the emotional and mental health needs of the children. Therapeutic classrooms include calm spaces and flexible seating in every room as standard, and allow children to work where they feel most comfortable. They take into consideration space, lighting, comfortability, accessibility, inclusivity and connective learning. Therapeutic classrooms are inspiring places that children want to be in and are underpinned by science. "

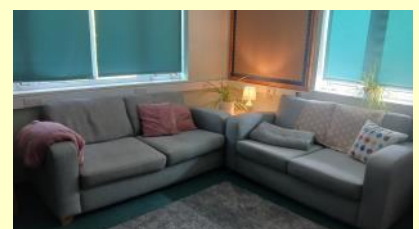


<https://www.tpctherapy.co.uk/therapeutic-classrooms/>

We have got lots of cushions, table lamps and fairy lights (thank you!), and are now looking for a few more plants. If you have any spare pot plants (fairly low maintenance) that you would like to donate, we would be very grateful!

Please contact the school office if you have anything that you would like to donate.

Thank you!





BRIGHSTONE CE AIDED PRIMARY SCHOOL

School Admissions

Every day is an open day

You are invited to have a tour of our wonderful school at a time that suits you. We welcome visits for Reception 2026 intake, and we also currently have spaces in Years 2, 3 and 4.

Please contact the school office to arrange a visit and an informal chat.

Contact Us :



01983 740285



office@brighstoneprimary.org.uk



www.brighstoneprimary.org.uk

You are also welcome to visit Brighstone Preschool. They offer childcare from 0-4, provide our wraparound care (breakfast and after school club) and offer a holiday club.

Learning and Achieving through Love, Courage and Respect



School Dinners

Children in **Year R, 1 and 2** are entitled to a 'universal' **free** school meal every day.

New Price Reminder

Children in Years 3-6 are charged at **£3.35** per day.

Please note the dates to see which week to look at.



ARE YOU A WINNER?

Every Thursday, check under your plate for a winner sticker!

1. Clear your plate
2. Check if you have a sticker
3. If you do, show a member of kitchen staff
4. Collect your prize

Chartwells **Good luck!**

| SPRING/SUMMER 2025 MENU | | WEEK 1 | | | | |
|-------------------------------------------------------------------|----------|---------------------------------------------------------------------------------------------------------------------------------------|---------------------------------------------------------|--------------------------------------------------------------------------|---------------------------------------------------------|---------------------------------------------------------|
| | | W/C: 21/04/2025, 12/05/2025, 09/06/2025, 30/06/2025, 21/07/2025, 08/09/2025, 29/09/2025 | | | | |
| | | MONDAY | TUESDAY | WEDNESDAY | THURSDAY | FRIDAY |
| HOT DISHES | OPTION 1 | Cheese and Tomato Pizza Served with Wholewheat Pasta | BBQ Chicken Served with Rainbow Rice | Roast Pork Served with Roast Potatoes and Gravy | Classic Beef Burger Served with Potato Wedges | Battered Fish Served with Chips |
| | OPTION 2 | Broccoli and Leek Tart | Macaroni Cheese | Butternut Squash and Tomato Bake Served with Roast Potatoes and Gravy | Quorn Burger Served with Potato Wedges | Veggie Fingers Served with Chips |
| | OPTION 3 | Tomato Pasta Fresh, Homemade Tomato Sauce with Pasta | Tomato Pasta Fresh, Homemade Tomato Sauce with Pasta | Tomato Pasta Fresh, Homemade Tomato Sauce with Pasta | Tomato Pasta Fresh, Homemade Tomato Sauce with Pasta | Tomato Pasta Fresh, Homemade Tomato Sauce with Pasta |
| HOT DISHES ARE SERVED WITH TWO VEGETABLES AND FRESHLY BAKED BREAD | | | | | | |
| DELI DISHES | OPTION 4 | Jacket Potato with a Choice of Toppings | Ham or Tuna Baguette | Jacket Potato with a Choice of Toppings | Ham or Tuna Baguette | Jacket Potato with a Choice of Toppings |
| | OPTION 5 | No Baguette | Cheese Baguette | No Baguette | Cheese Baguette | No Baguette |
| DELI DISHES ARE SERVED WITH MIXED SALAD | | | | | | |
| DESSERT | | Chocolate Brownie | Fruits of the Forest Jelly | Banoffee Pie | Strawberry Ice Cream | Ginger Biscuit with Fruit |
| | | AVAILABLE DAILY Fresh fruit, salad, yoghurt and water | | | | |
| | | Vegetarian Vegan Oily Fish Wholegrain Fruity! Nutritionist's Choice | | | | |
| | | Our menu is subject to change. Please be assured that all notified medical diets and allergy requirements will be safely catered for. | | | | |

SPRING/SUMMER 2025 MENU



WEEK 2

W/C: 28/04/2025, 19/05/2025, 16/06/2025, 07/07/2025, 28/07/2025,
15/09/2025, 06/10/2025

| | | MONDAY | TUESDAY | WEDNESDAY | THURSDAY | FRIDAY |
|-------------------------------------------------------------------|----------|----------------------------------------------------------|----------------------------------------------------------|-------------------------------------------------------------------------------|---------------------------------------------------------|---------------------------------------------------------|
| HOT DISHES | OPTION 1 | Macaroni Cheese | BBQ Chicken Pizza Served with Potato Wedges | Roast Gammon Served with Roast Potatoes and Gravy | Beef Bolognese Served with Wholewheat Pasta | Fish Fingers Served with Chips |
| | OPTION 2 | Veggie Meatballs in Tomato Sauce with Wholegrain Rice | Meatless Feast Cheesy Pizza Served with Potato Wedges | Sweet Potato, Chickpea and Herb Roast Served with Roast Potatoes and Gravy | Vegetable Fajita Wrap Served with Wholegrain Rice | Quorn Dippers Served with Chips |
| | OPTION 3 | Tomato Pasta Fresh, Homemade Tomato Sauce with Pasta | Tomato Pasta Fresh, Homemade Tomato Sauce with Pasta | Tomato Pasta Fresh, Homemade Tomato Sauce with Pasta | Tomato Pasta Fresh, Homemade Tomato Sauce with Pasta | Tomato Pasta Fresh, Homemade Tomato Sauce with Pasta |
| HOT DISHES ARE SERVED WITH TWO VEGETABLES AND FRESHLY BAKED BREAD | | | | | | |
| DELI DISHES | OPTION 4 | Jacket Potato with a Choice of Toppings | Ham or Tuna Baguette | Jacket Potato with a Choice of Toppings | Ham or Tuna Baguette | Jacket Potato with a Choice of Toppings |
| | OPTION 5 | No Baguette | Cheese Baguette | No Baguette | Cheese Baguette | No Baguette |
| DELI DISHES ARE SERVED WITH MIXED SALAD | | | | | | |
| DESSERT | | Apple and Golden Syrup Cake | Strawberry Jelly | Flapjack with Fruit | Chocolate Ice Cream | Lemon Cake |



AVAILABLE DAILY

Fresh fruit, salad, yoghurt and water



Chartwells
Schools

Vegetarian
 Vegan
 Oily Fish
 Wholegrain
 Fruity!
 Nutritionist's Choice

Our menu is subject to change. Please be assured that all notified medical diets and allergy requirements will be safely catered for.

Menu_21_202407

SPRING/SUMMER 2025 MENU



WEEK 3

W/C: 05/05/2025, 02/06/2025, 23/06/2025, 14/07/2025, 01/09/2025,
22/09/2025, 13/10/2025

| | | MONDAY | TUESDAY | WEDNESDAY | THURSDAY | FRIDAY |
|-------------------------------------------------------------------|----------|---------------------------------------------------------------------|---------------------------------------------------------|---------------------------------------------------------|---------------------------------------------------------|---------------------------------------------------------|
| HOT DISHES | OPTION 1 | Cheese and Tomato Pizza Served with Wholewheat Pasta | Sausage Hot Dog Served with Potato Wedges | Roast Chicken Served with Roast Potatoes and Gravy | Oat Crusted Chicken Served with Wholegrain Rice | Fish Fingers Served with Chips |
| | OPTION 2 | Chilli No Carne With Crispy Tortilla Served with Wholegrain Rice | Veggie Sausage Hot Dog Served with Potato Wedges | Roast Quorn Served with Roast Potatoes and Gravy | Meatless Shepherd's Pie Served with Gravy | Quorn Dippers Served with Chips |
| | OPTION 3 | Tomato Pasta Fresh, Homemade Tomato Sauce with Pasta | Tomato Pasta Fresh, Homemade Tomato Sauce with Pasta | Tomato Pasta Fresh, Homemade Tomato Sauce with Pasta | Tomato Pasta Fresh, Homemade Tomato Sauce with Pasta | Tomato Pasta Fresh, Homemade Tomato Sauce with Pasta |
| HOT DISHES ARE SERVED WITH TWO VEGETABLES AND FRESHLY BAKED BREAD | | | | | | |
| DELI DISHES | OPTION 4 | Jacket Potato with a Choice of Toppings | Ham or Tuna Baguette | Jacket Potato with a Choice of Toppings | Ham or Tuna Baguette | Jacket Potato with a Choice of Toppings |
| | OPTION 5 | No Baguette | Cheese Baguette | No Baguette | Cheese Baguette | No Baguette |
| DELI DISHES ARE SERVED WITH MIXED SALAD | | | | | | |
| DESSERT | | Flapjack | Peach and Ginger Pudding | Oatie Cookie with Fruit | Vanilla Ice Cream | Crunchy Chocolate Mousse |



AVAILABLE DAILY

Fresh fruit, salad, yoghurt and water



Chartwells
Schools

Vegetarian
 Vegan
 Oily Fish
 Wholegrain
 Fruity!
 Nutritionist's Choice

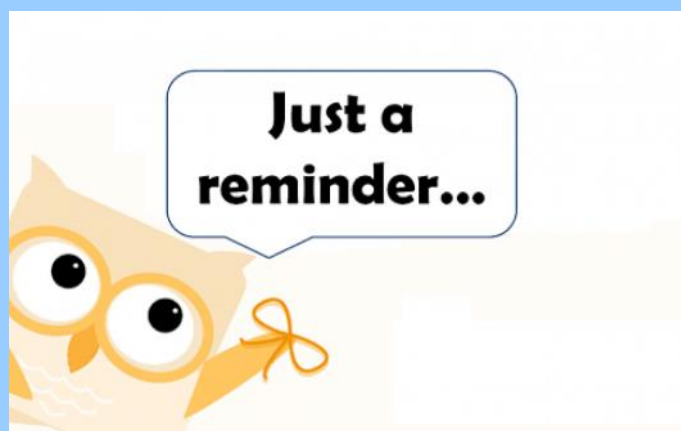
Our menu is subject to change. Please be assured that all notified medical diets and allergy requirements will be safely catered for.

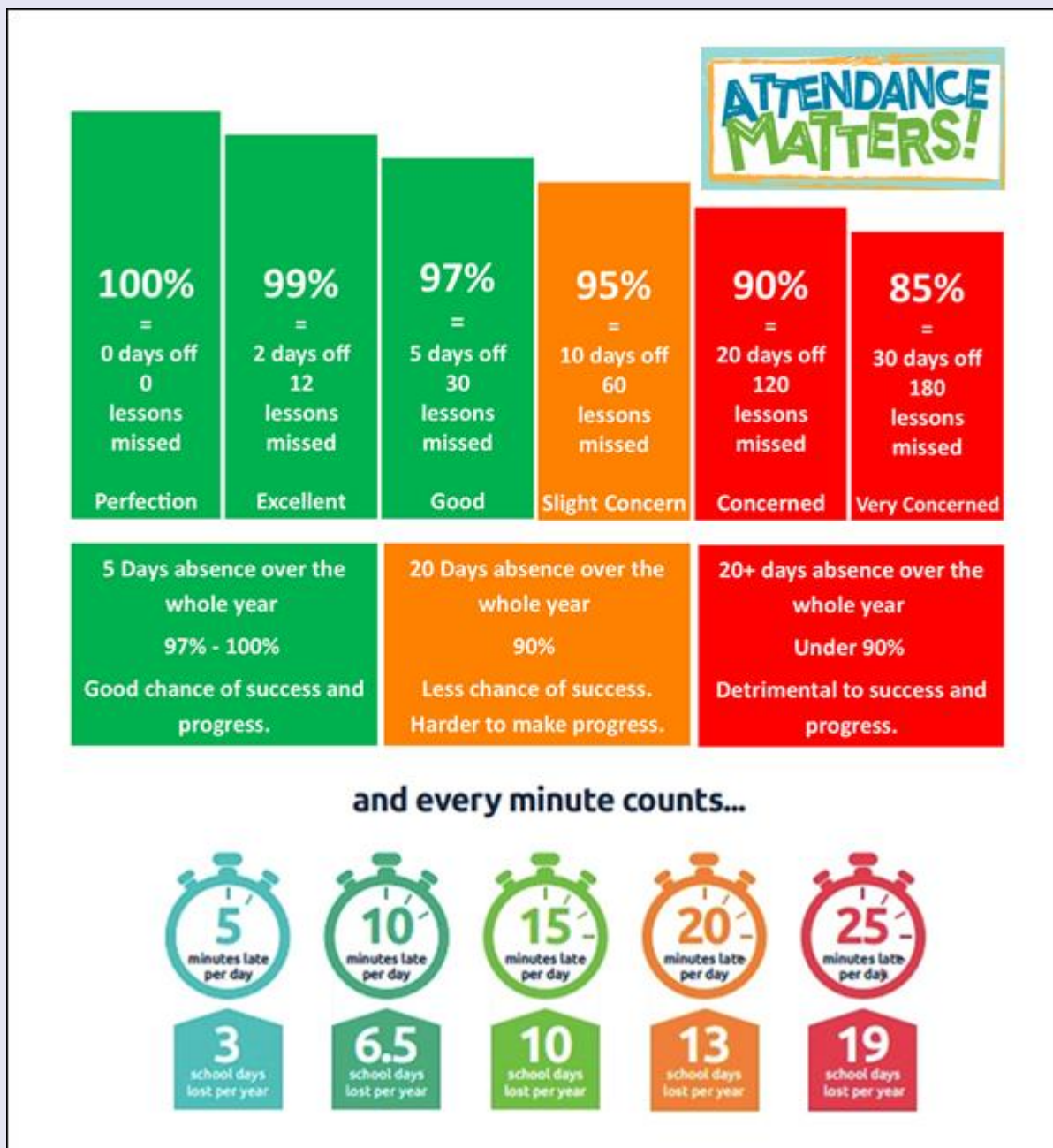
Menu_21_202407

Reminders

- PE Kit is navy blue top/jumper/hoodie with navy blue bottoms - **Branded items are not permitted**
- All hair accessories, socks, shoes and trainers must be in the school colours: navy blue, grey, black or white (no novelty socks)
- All long hair must be tied back (pony tail, bun, plaits etc...) to avoid the spreading of head lice
- No jewellery to be worn other than stud earrings, which must be removed or taped over on PE days
- Gates open at 8.25am and are locked at 8.30am, and in the afternoon, gates are opened at 2.55pm and locked at 3.10pm
- **As teachers are busy welcoming and supervising children first thing in the morning, please could all messages be given to Mrs Pelosi in the office, who will then pass them on to the teacher**
- Only **water** is allowed in drinks bottles, and snacks must be fresh fruit only

Thank you!





At Brighstone Primary School we have high expectations for our children. This begins with attendance and punctuality as they are important life skills to learn.

Good school attendance habits are best started early. Children learn from those around them and you as parents/carers set the standards and expectations for your child. Lateness has a negative impact; being late may disrupt already settled children and lessons, affect achievement and embarrass, worry or upset your child. We understand that there may be an occasional unavoidable instance where you are late, but if it happens frequently, please let us know if there may be something that we can do to help.

What to do if your child is unwell:

Check the NHS Guidance: <https://www.nhs.uk/live-well/is-my-child-too-ill-for-school/>

You should notify the school office before 9am every morning your child is unable to attend due to illness. You can either telephone on 740285 or email on office@brighstoneprimary.org.uk. Telephone calls must be followed up in writing to authorise the (illness) absence.



Respect Charter

at Brighstone CE Aided Primary School

At Brighstone CE Aided Primary School we believe staff, parents and children are entitled to a safe and protective environment in which to learn and work. We strive to ensure that our school offers a warm and nurturing environment. All members of the school community and visitors should demonstrate mutual respect, to feel safe, work together and to use restorative approaches as the foundation of our practice. Any behaviour that may lead to feelings of harassment, alarm or distress to members of our community, will not be tolerated and action taken.

Expectations

- That all adults set a good example to children at all times, showing them how to get along with all members of the school and the wider community.
- That no one - staff, governors, parents, carers, volunteers or children - be subjected to abusive behaviour or any form of threats from visitors on the school premises.
- That physical attacks and threatening behaviour, abusive or insulting language verbal or written (including on social media), to staff, governors, parents, carers, volunteers, children and other users of the school premises will not be tolerated and may lead to a ban from school premises and/or police action.

Types of behaviour that are considered serious and unacceptable

This is not an exhaustive list but seeks to provide illustrations of such behaviour:

- Shouting, either in person or over the telephone
- Speaking in an aggressive/threatening tone
- Physically intimidating, e.g. standing very close
- The use of aggressive hand gestures/exaggerated movements
- Physical threats
- Shaking or holding a fist towards another person
- Swearing and name calling
- Pushing
- Slapping, punching, hitting or kicking
- Racist, homophobic or other hateful behaviour
- Sexist comments or sexual innuendo
- Disrespecting religion or belief
- Inappropriate communications (posting on Social Networking sites, emails or letters, etc.) which could bring the school into disrepute or be deemed as bullying, harassment and/or a hate-related

The school reserves the right to take any necessary actions to ensure that members of the school community are not subjected to any form of abuse in line with policy and procedure. If you choose to engage in these behaviours you may be asked to leave the site or the police may be called.

Thank you for your understanding and support

If your message is **urgent** or about **attendance** contact Mrs Pelosi in the **office**:
01983 740285
office@brighstoneprimary.org.uk
Office Hours 8am - 4pm

If you would like to speak with the **Headteacher** Mrs Lennon, you can find her at the school gate every morning or you can call 740285 to make an appointment with her



For **general enquiries** you can call or email the office, text the school messaging service or send a message to our school **Facebook** page: <https://www.facebook.com/BrighstoneCEPrimarySchool>
Our Facebook page is open so you do not need a personal account to view it

If you would like to contact your child's class teacher, you can email them at the following email addresses. Please allow at least one working day for a reply. For anything urgent, please contact the school office.

Year R - teacher.flowerbee@brighstoneprimary.org.uk
Year 1/2 - teacher.bumblebee@brighstoneprimary.org.uk
Year 3/4 - teacher.honeybee@brighstoneprimary.org.uk
Year 5/6 - teacher.ivybee@brighstoneprimary.org.uk
The Nest resourced provision - thenest@brighstoneprimary.org.uk

If you have concern regarding **safeguarding** or your **child's mental health and wellbeing** please contact Mrs Jones. You can speak to her on the playground every morning, call into the school office or email m.jones@brighstoneprimary.org.uk
safeguarding@brighstoneprimary.org.uk

Our **Newsletter** is published every Friday with key information for parents and carers. You can find it on our school website: <https://www.brighstoneprimary.org.uk/category/the-buzz/>

Contact us



If you have a **safeguarding** concern about a child outside of school hours you can call the police on 999 if you feel they are at risk of immediate harm or contact Children's Services on 0300 300 0117

Please be reminded that all children need to wear the correct PE kit on PE days.
The correct PE kit is also needed for sports clubs.
Socks and hair accessories must be in the school colours.

School Day Timings

The school day is as follows:

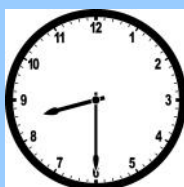
8.25am: Gates open

8.30am: School starts

3pm: School ends

3.10pm: Gates close

Many thanks.





School Term Dates for 2025-2026

| | |
|-------------------------|---------------------------------------------------------------------------------|
| Friday 10th October: | Go Yellow Day for Mountbatten Hospice (non-uniform day - wear something yellow) |
| Wednesday 15th October: | Harvest Festival in St Mary's Church at 8.45am |
| Thursday 16th October: | Open afternoon for parents/carers from 2pm |
| Friday 17th October: | Last day of term |
| Monday 3rd November: | Back to school |

Please note that the school will be closed on the following days in this academic year:

- Day 1: Monday 1st September 2025
- Day 2: Tuesday 2nd September 2025
- Day 3: Wednesday 3rd September 2025
- Day 4: Monday 1st June 2026
- Day 5: Monday 27th July 2026

Term dates are available on our school website: <https://www.brighstoneprimary.org.uk/calendar/>

This page is regularly updated.