

# The Buzz

## 10th October 2025



Learning and Achieving Through  
Love, Courage and Respect

Dear parents, carers and children,

During this morning's Golden Worship, we were delighted to announce the **Y6 Leadership Team**. The children applied for the various roles, either via email, letter, PPT presentation or verbal presentation. We were very impressed by the quality of the applications. Well done, Y6! We look forward to seeing you apply yourselves with aplomb.

We also formally announced the **School Council members** and the **EARA group members**. These processes of giving children a voice links closely with the Fundamental British Values (democracy in particular), as well as the United Nations Convention on the Rights of the Child, which the EARA group have been learning about. We look forward to working with the representatives. Please see p4 of this Buzz for the names.



Last Saturday saw the **Brighstone Horticultural Society's autumn show**. Many of our children entered a variety of classes, and all children entered the handwriting competition. Boni, our BHS link, will be in during next week's Golden Worship to announce the awards. Well done to all who took part.

Yesterday, **Honey Bee class** were lucky enough to receive a visit from children's author Philip Kavadias, as part of the Isle of Wight Literary



Festival Children's Programme. The children were very excited to meet him, in particular our budding authors and illustrators as well as the fans of his books! Philip really ignited the children's imaginations as he talked them through his stories and asked for their opinions on everything from the best underwater transport for a villain, to the cutest futuristic pet - he promised to take on board the children's ideas as he writes his next story series. I am sure that Philip's books will be on several Christmas present lists!



In Art, **Honey Bee class** have been learning about Ancient Egyptian scrolls. The children have tried to replicate Egyptian styles, patterns and colours while experimenting with designs for scrolls which tell the 'reader' something about themselves. They made their own version of papyrus paper and have now begun work translating their designs onto their new/old paper! We will continue to find out more about ancient civilisations in history next term. (Thank you to Mrs Northard for these reports.)



At five years old:  
Never read to - 4,622 words  
1-2 times a week - 63,570 words  
3-5 times a week - 169,520 words  
Daily - 296,600 words  
Five books a day - 1,483,300 words

Yesterday evening, we welcomed some Reception parents/carers along to a **RWI information evening**. If you weren't able to make it, please see the email that Mrs Cousins sent out today, along with the PPT slides. One fact really stood out to us: the number of words a child hears by the time they are five years old, depending on how much they are read to. Please do read with your child as much as you can! It's fun and has so many benefits.

Today came with a splash of golden sunshine with our **Go Yellow Day**, in aid of the Mountbatten Hospice. Altogether, along with preschool, we raised a total of £131! Well done and thank you!

Thank you to those who have brought in their shoeboxes for the **Rotary appeal**. They will be collected on Thursday 16th October, so please do bring them in before then if you haven't already done so.



I hope you all have a lovely weekend. With very best wishes, Mrs Lennon and the Brighstone team

# Collective Worship

This week, our focus is Jesus' words:

**Forgive Others**



**Value: Community**



Sometimes, precious things get broken. Relationships between people can get broken too. When this happens, only forgiveness can help to make things better. Forgiveness can be very hard, especially if feelings have been badly hurt.

Peter asked Jesus how many times he should forgive someone. "Seven times?" Jesus replied, "No, seventy times seven". In other words, go on forgiving!

If you were trying to explain the meaning of forgiveness to someone who had never heard of it before, how would you describe it?



When things are broken

Help us to forgive one another.

When friends let us down

Help us to forgive one another.

When life seems unfair

Help us to forgive one another.

Amen





## Inclusion

Welcome to our new inclusion section! Each week, we will be sharing a Makaton sign and Widgit symbol, to help with our inclusive ethos.

This week, our word is:

**goodbye**

[https://www.youtube.com/watch?v=\\_O9ESnshVag](https://www.youtube.com/watch?v=_O9ESnshVag)

Makaton sign	Widgit symbol
	

## Poetry Corner



## Reading Recommendations

Each week, we include a book recommendation from a child and/or adult.

This week, Quinn recommends *Revenge of the Killer Worm* by Kathryn Foxfield.

There are four characters called Milo, Danny, Grace and Nora. Milo is in the arcade playing a very old game called Worm Attack and he can't get past the Level 3 boss, which is a giant killer worm. Then strange things start happening and they start to think the killer worm is real and has woken up for his revenge. People start going missing and a caravan gets sucked down into the sand.

I have read this book twice and I really recommend it to anyone who likes action books.

(I was inspired to read this after Boni had read a page from it on World Book Day in the village library.)



## Safeguarding

If you have a concern about a child you can call the police on 999 if you feel they are at risk of immediate harm.

You can contact the NSPCC:

### Contact the NSPCC Helpline

If you have any concerns at all about a child's safety or wellbeing, don't hesitate to contact us.

Call us or email [help@nspcc.org.uk](mailto:help@nspcc.org.uk)

**0808 800 5000**

**Find out more**

Or call children's services 01983 823435

## Attendance Matters!

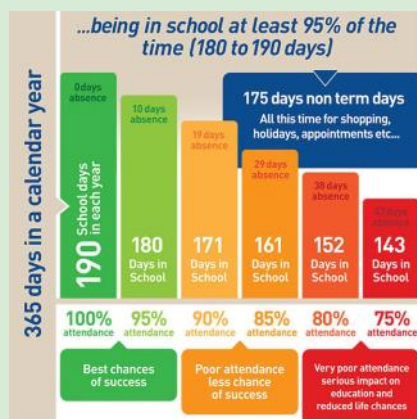
Week Commencing 6th October  
(Whole school attendance target: 96.5%)

Actual Attendance: **88%**

Late marks this week: **11**



A reminder that term time holidays are not authorised and could have a detrimental effect on children's academic and social progress.



<https://www.nhs.uk/live-well/is-my-child-too-ill-for-school/>



# Golden Book

<b>Flower Bee</b>	Aksajan for a super start to Brighstone Primary School. Ella for showing all of our school values in looking out for a friend at lunchtime earning her this week's Bee-Haviour award also!
<b>Bumble Bee</b>	Arlo for being one of the only children to 'choose' to complete challenges independently, even before busy bee time(!). He has a great attitude and is working so hard each day. Well done Arlo, keep it up! Mariia for making massive progress with her writing and number work. She has a superb attitude towards learning and makes us all smile with her friendly and fun nature. Luka-Bear has wowed so many of us with his massive progress in reading! He also has a superb attitude to learning and is often helping me to motivate his classmates. Well done Luka!
<b>Honey Bee</b>	Ellie for working hard, particularly in Maths, and for having the wisdom and courage to ask for help when she needs it. Skye for brilliant Maths work and having the kindness to help others whenever she can.
<b>Ivy Bee</b>	Charlie for really good ideas in history and prayer writing. Rosie for an excellent reading record book and her focus and effort in Grammarsaurus.
<b>Sports Bee</b>	Bethan for always being ready to learn, giving 100% and showing the School Games Values, as well as stepping up to the U11 Girl's football team with a brilliant defensive display.





## Pupil Leadership Groups

Y6 Leadership Roles			
<b>Head Girl</b>	Flo	<b>Head Boy</b>	Hugh
<b>Deputy Head Girl</b>	Martha	<b>Deputy Head Boy</b>	Henry
<b>Hive and Sports Captains</b>	Yellow: Reece and Maddie Red: Dan and Freddie K Blue: Fred C and Violet Green: Rosie and Oscar S	<b>Librarians</b>	Allina, Henry and Lilli
<b>Pupil Safeguarding Mentor</b>	Oskar P	<b>Buddies</b>	Maddie, Charlotte and Myles

School Council	
<b>Bumble Bee class</b>	Y1: Henrietta and James Y2: Ellis and Autumn
<b>Honey Bee class</b>	Y3: Nathan and Ellie Y4: Bethan and Noah B
<b>Ivy Bee class</b>	Y5: Helena and Sam Y6: Flo and Hugh



EARA	
<b>Honey Bee class</b>	William Theo H Sky B Poppy
<b>Ivy Bee class</b>	Violet Henry Maddie Freddie K





BRIGHSTONE SCHOOL ASSOCIATION

# END OF TERM DISCO

FRIDAY 17<sup>TH</sup> OCTOBER  
3PM - 4PM

FANCY DRESS OPTIONAL  
£3

DRINK AND SWEETS INCLUDED





## BSA Astra Recycling Clothing Bank

### We take...

Clothes,  
Shoes,  
Bed Linen,  
Accessories  
(Such as  
belts, hats  
& handbags)  
Soft Toys



### We can't take...

Duvets or  
Cushions,  
Off Cuts,  
Carpet or  
Curtains

Located in school entrance car park

*Parents,  
Family members  
& friends of Brighstone  
Primary School*

**Does your place of  
work offer the Match  
Funding Scheme?**

Get in touch with us if your employers could  
help our BSA fundraisers via email at  
[brighstoneschoolassoc@gmail.com](mailto:brighstoneschoolassoc@gmail.com)



The Brighstone School Association now  
receive 30% commission from Stikins every  
time you buy your new name labels.

Quote our number 2721 when you place an order.  
A great way to keep your child's belongings safe and  
to support the school!

<https://www.stikins.co.uk>

## Like Our Pages!



**Facebook & Instagram**

**Search for  
Brighstone School  
Association**

**It's never too late to keep  
up with our latest news!**

# Plea for donations of plants!



At Brighstone, we have been developing our classrooms into calmer, more neutral 'therapeutic classrooms'. A **huge thank you** to everyone who has donated neutral cushions, table lamps and plants. It has really helped to make a difference across the school.

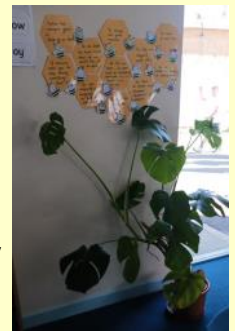


*"Therapeutic classrooms are a new approach that redefines the traditional classroom set up. The average UK classroom is bright, cluttered, overwhelming and outdated, and is not designed around the needs of our children today."*

*Children deserve to feel comfortable, safe and inspired, especially when we know there has been a rise in the numbers of children struggling with their social, motional and mental health. Teachers up and down the country are reporting increases in school refusal, dysregulated behaviours, disengagement and low social skills. Making changes to the classroom can help."*

## What is a therapeutic classroom?

*"Therapeutic classrooms are welcoming, safe, inviting environments that cultivate learning through their design. They calm stress hormones and increase feelings of emotional safety, whilst meeting the emotional and mental health needs of the children. Therapeutic classrooms include calm spaces and flexible seating in every room as standard, and allow children to work where they feel most comfortable. They take into consideration space, lighting, comfortability, accessibility, inclusivity and connective learning. Therapeutic classrooms are inspiring places that children want to be in and are underpinned by science. "*

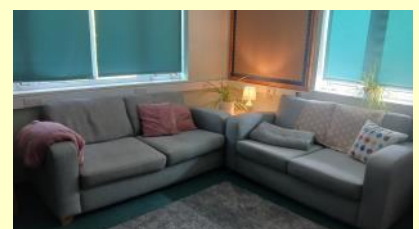


<https://www.tpctherapy.co.uk/therapeutic-classrooms/>

We have got lots of cushions, table lamps and fairy lights (thank you!), and are now looking for a few more plants. If you have any spare pot plants (fairly low maintenance) that you would like to donate, we would be very grateful!

Please contact the school office if you have anything that you would like to donate.

**Thank you!**







# BRIGHSTONE CE AIDED PRIMARY SCHOOL

## School Admissions

**Every day is an open day**

**You are invited to have a tour of our wonderful school at a time that suits you. We welcome visits for Reception 2026 intake, and we also currently have spaces in Years 2, 3 and 4.**

**Please contact the school office to arrange a visit and an informal chat.**

### **Contact Us :**



01983 740285



[office@brighstoneprimary.org.uk](mailto:office@brighstoneprimary.org.uk)



[www.brighstoneprimary.org.uk](http://www.brighstoneprimary.org.uk)

You are also welcome to visit Brighstone Preschool. They offer childcare from 0-4, provide our wraparound care (breakfast and after school club) and offer a holiday club.



Learning and Achieving through Love, Courage and Respect





## School Dinners

**New Price Reminder**

Children in Years 3-6 are charged at **£3.35**  
per day.

**Please note the dates to see which week to look at.**



# Chartwells



## ARE YOU A WINNER?

**Every Thursday, check under your plate for a winner sticker!**

1. Clear your plate
2. Check if you have a sticker
3. If you do, show a member of kitchen staff
4. Collect your prize



Good luck!



## SPRING/SUMMER 2025 MENU



## WEEK 1

W/C: 21/04/2025, 12/05/2025, 09/06/2025, 30/06/2025, 21/07/2025,  
08/09/2025, 29/09/2025

		MONDAY	TUESDAY	WEDNESDAY	THURSDAY	FRIDAY
HOT DISHES	OPTION 1	Cheese and Tomato Pizza Served with Wholewheat Pasta 	BBQ Chicken Served with Rainbow Rice	Roast Pork Served with Roast Potatoes and Gravy	Classic Beef Burger Served with Potato Wedges	Battered Fish Served with Chips
	OPTION 2	OR Broccoli and Leek Tart  	OR Macaroni Cheese 	OR Butternut Squash and Tomato Bake Served with Roast Potatoes and Gravy  	OR Quorn Burger Served with Potato Wedges 	OR Veggie Fingers Served with Chips 
	OPTION 3	OR Tomato Pasta Fresh, Homemade Tomato Sauce with Pasta  	OR Tomato Pasta Fresh, Homemade Tomato Sauce with Pasta  	OR Tomato Pasta Fresh, Homemade Tomato Sauce with Pasta  	OR Tomato Pasta Fresh, Homemade Tomato Sauce with Pasta  	OR Tomato Pasta Fresh, Homemade Tomato Sauce with Pasta  
HOT DISHES ARE SERVED WITH TWO VEGETABLES AND FRESHLY BAKED BREAD						
DELI DISHES	OPTION 4	Jacket Potato with a Choice of Toppings  	Ham or Tuna Baguette	Jacket Potato with a Choice of Toppings  	Ham or Tuna Baguette	Jacket Potato with a Choice of Toppings  
	OPTION 5	OR No Baguette	OR Cheese Baguette 	OR No Baguette	OR Cheese Baguette 	OR No Baguette
DELI DISHES ARE SERVED WITH MIXED SALAD						
DESSERT		Chocolate Brownie 	Fruits of the Forest Jelly	Banoffee Pie	Strawberry Ice Cream	Ginger Biscuit with Fruit

**AVAILABLE DAILY**

Fresh fruit, salad, yoghurt and water



**Chartwells**

Schools

 Vegetarian
  Vegan
  Oily Fish
  Wholegrain
  Fruity!
  Nutritionist's Choice

Our menu is subject to change. Please be assured that all notified medical diets and allergy requirements will be safely catered for.



# SPRING/SUMMER 2025 MENU



## WEEK 2

W/C: 28/04/2025, 19/05/2025, 16/06/2025, 07/07/2025, 28/07/2025,  
15/09/2025, 06/10/2025

		MONDAY	TUESDAY	WEDNESDAY	THURSDAY	FRIDAY
HOT DISHES	OPTION 1	Macaroni Cheese	BBQ Chicken Pizza Served with Potato Wedges	Roast Gammon Served with Roast Potatoes and Gravy	Beef Bolognese Served with Wholewheat Pasta	Fish Fingers Served with Chips
	OPTION 2	Veggie Meatballs in Tomato Sauce with Wholegrain Rice	Meatless Feast Cheesy Pizza Served with Potato Wedges	Sweet Potato, Chickpea and Herb Roast Served with Roast Potatoes and Gravy	Vegetable Fajita Wrap Served with Wholegrain Rice	Quorn Dippers Served with Chips
	OPTION 3	Tomato Pasta Fresh, Homemade Tomato Sauce with Pasta	Tomato Pasta Fresh, Homemade Tomato Sauce with Pasta	Tomato Pasta Fresh, Homemade Tomato Sauce with Pasta	Tomato Pasta Fresh, Homemade Tomato Sauce with Pasta	Tomato Pasta Fresh, Homemade Tomato Sauce with Pasta
HOT DISHES ARE SERVED WITH TWO VEGETABLES AND FRESHLY BAKED BREAD						
DELI DISHES	OPTION 4	Jacket Potato with a Choice of Toppings	Ham or Tuna Baguette	Jacket Potato with a Choice of Toppings	Ham or Tuna Baguette	Jacket Potato with a Choice of Toppings
	OPTION 5	No Baguette	Cheese Baguette	No Baguette	Cheese Baguette	No Baguette
DELI DISHES ARE SERVED WITH MIXED SALAD						
DESSERT		Apple and Golden Syrup Cake	Strawberry Jelly	Flapjack with Fruit	Chocolate Ice Cream	Lemon Cake



### AVAILABLE DAILY

Fresh fruit, salad, yoghurt and water



Chartwells  
Schools

Vegetarian 
 Vegan 
 Oily Fish 
 Wholegrain 
 Fruity! 
 Nutritionist's Choice

Our menu is subject to change. Please be assured that all notified medical diets and allergy requirements will be safely catered for.

Menu\_21\_202407

# SPRING/SUMMER 2025 MENU



## WEEK 3

W/C: 05/05/2025, 02/06/2025, 23/06/2025, 14/07/2025, 01/09/2025,  
22/09/2025, 13/10/2025

		MONDAY	TUESDAY	WEDNESDAY	THURSDAY	FRIDAY
HOT DISHES	OPTION 1	Cheese and Tomato Pizza Served with Wholewheat Pasta	Sausage Hot Dog Served with Potato Wedges	Roast Chicken Served with Roast Potatoes and Gravy	Oat Crusted Chicken Served with Wholegrain Rice	Fish Fingers Served with Chips
	OPTION 2	Chilli No Carne With Crispy Tortilla Served with Wholegrain Rice	Veggie Sausage Hot Dog Served with Potato Wedges	Roast Quorn Served with Roast Potatoes and Gravy	Meatless Shepherd's Pie Served with Gravy	Quorn Dippers Served with Chips
	OPTION 3	Tomato Pasta Fresh, Homemade Tomato Sauce with Pasta	Tomato Pasta Fresh, Homemade Tomato Sauce with Pasta	Tomato Pasta Fresh, Homemade Tomato Sauce with Pasta	Tomato Pasta Fresh, Homemade Tomato Sauce with Pasta	Tomato Pasta Fresh, Homemade Tomato Sauce with Pasta
HOT DISHES ARE SERVED WITH TWO VEGETABLES AND FRESHLY BAKED BREAD						
DELI DISHES	OPTION 4	Jacket Potato with a Choice of Toppings	Ham or Tuna Baguette	Jacket Potato with a Choice of Toppings	Ham or Tuna Baguette	Jacket Potato with a Choice of Toppings
	OPTION 5	No Baguette	Cheese Baguette	No Baguette	Cheese Baguette	No Baguette
DELI DISHES ARE SERVED WITH MIXED SALAD						
DESSERT		Flapjack	Peach and Ginger Pudding	Oatie Cookie with Fruit	Vanilla Ice Cream	Crunchy Chocolate Mousse



### AVAILABLE DAILY

Fresh fruit, salad, yoghurt and water



Chartwells  
Schools

Vegetarian 
 Vegan 
 Oily Fish 
 Wholegrain 
 Fruity! 
 Nutritionist's Choice

Our menu is subject to change. Please be assured that all notified medical diets and allergy requirements will be safely catered for.

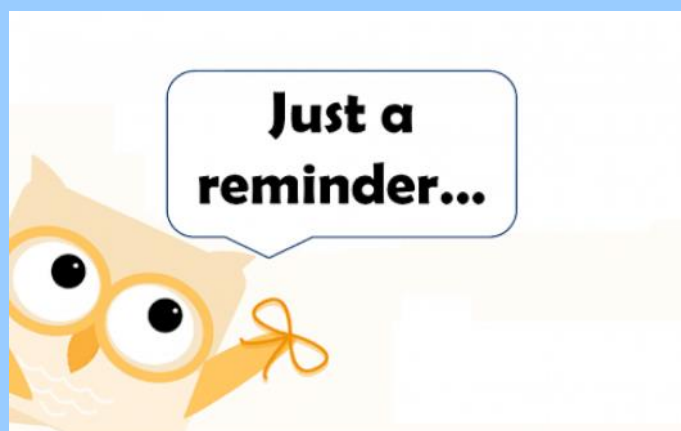
Menu\_21\_202407

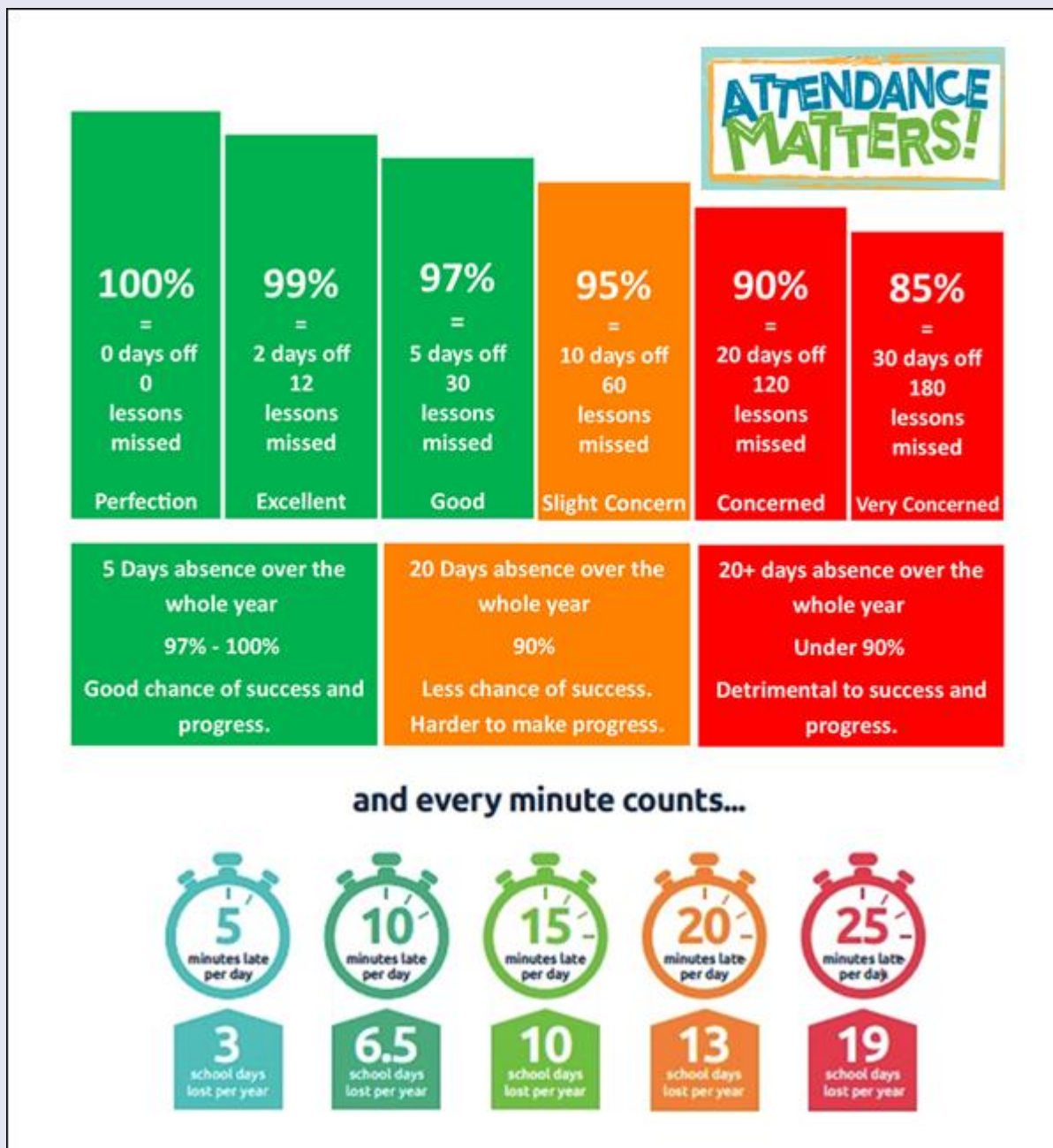


# Reminders

- PE Kit is navy blue top/jumper/hoodie with navy blue bottoms - **Branded items are not permitted**
- All hair accessories, socks, shoes and trainers must be in the school colours: navy blue, grey, black or white (no novelty socks)
- All long hair must be tied back (pony tail, bun, plaits etc...) to avoid the spreading of head lice
- No jewellery to be worn other than stud earrings, which must be removed or taped over on PE days
- Gates open at 8.25am and are locked at 8.30am, and in the afternoon, gates are opened at 2.55pm and locked at 3.10pm
- **As teachers are busy welcoming and supervising children first thing in the morning, please could all messages be given to Mrs Pelosi in the office, who will then pass them on to the teacher**
- Only **water** is allowed in drinks bottles, and snacks must be fresh fruit only

Thank you!





At Brighstone Primary School we have high expectations for our children. This begins with attendance and punctuality as they are important life skills to learn.

Good school attendance habits are best started early. Children learn from those around them and you as parents/carers set the standards and expectations for your child. Lateness has a negative impact; being late may disrupt already settled children and lessons, affect achievement and embarrass, worry or upset your child. We understand that there may be an occasional unavoidable instance where you are late, but if it happens frequently, please let us know if there may be something that we can do to help.

What to do if your child is unwell:

Check the NHS Guidance: <https://www.nhs.uk/live-well/is-my-child-too-ill-for-school/>

You should notify the school office before 9am every morning your child is unable to attend due to illness. You can either telephone on 740285 or email on [office@brighstoneprimary.org.uk](mailto:office@brighstoneprimary.org.uk). Telephone calls must be followed up in writing to authorise the (illness) absence.





## Respect Charter

### at Brighstone CE Aided Primary School

At Brighstone CE Aided Primary School we believe staff, parents and children are entitled to a safe and protective environment in which to learn and work. We strive to ensure that our school offers a warm and nurturing environment. All members of the school community and visitors should demonstrate mutual respect, to feel safe, work together and to use restorative approaches as the foundation of our practice. Any behaviour that may lead to feelings of harassment, alarm or distress to members of our community, will not be tolerated and action taken.

#### Expectations

- That all adults set a good example to children at all times, showing them how to get along with all members of the school and the wider community.
- That no one - staff, governors, parents, carers, volunteers or children - be subjected to abusive behaviour or any form of threats from visitors on the school premises.
- That physical attacks and threatening behaviour, abusive or insulting language verbal or written (including on social media), to staff, governors, parents, carers, volunteers, children and other users of the school premises will not be tolerated and may lead to a ban from school premises and/or police action.

#### Types of behaviour that are considered serious and unacceptable

This is not an exhaustive list but seeks to provide illustrations of such behaviour:

- Shouting, either in person or over the telephone
- Speaking in an aggressive/threatening tone
- Physically intimidating, e.g. standing very close
- The use of aggressive hand gestures/exaggerated movements
- Physical threats
- Shaking or holding a fist towards another person
- Swearing and name calling
- Pushing
- Slapping, punching, hitting or kicking
- Racist, homophobic or other hateful behaviour
- Sexist comments or sexual innuendo
- Disrespecting religion or belief
- Inappropriate communications (posting on Social Networking sites, emails or letters, etc.) which could bring the school into disrepute or be deemed as bullying, harassment and/or a hate-related

The school reserves the right to take any necessary actions to ensure that members of the school community are not subjected to any form of abuse in line with policy and procedure. If you choose to engage in these behaviours you may be asked to leave the site or the police may be called.

**Thank you for your understanding and support**

If your message is **urgent** or about **attendance** contact Mrs Pelosi in the **office**:  
**01983 740285**  
office@brighstoneprimary.org.uk  
Office Hours 8am - 4pm

If you would like to speak with the **Headteacher** Mrs Lennon, you can find her at the school gate every morning or you can call 740285 to make an appointment with her



For **general enquiries** you can call or email the office, text the school messaging service or send a message to our school **Facebook** page: <https://www.facebook.com/BrighstoneCEPrimarySchool>  
*Our Facebook page is open so you do not need a personal account to view it*

If you would like to contact your child's class teacher, you can email them at the following email addresses. Please allow at least one working day for a reply. For anything urgent, please contact the school office.

Year R - teacher.flowerbee@brighstoneprimary.org.uk  
Year 1/2 - teacher.bumblebee@brighstoneprimary.org.uk  
Year 3/4 - teacher.honeybee@brighstoneprimary.org.uk  
Year 5/6 - teacher.ivybee@brighstoneprimary.org.uk  
The Nest resourced provision - thenest@brighstoneprimary.org.uk

If you have concern regarding **safeguarding** or your **child's mental health and wellbeing** please contact Mrs Jones. You can speak to her on the playground every morning, call into the school office or email m.jones@brighstoneprimary.org.uk  
safeguarding@brighstoneprimary.org.uk

Our **Newsletter** is published every Friday with key information for parents and carers. You can find it on our school website: <https://www.brighstoneprimary.org.uk/category/the-buzz/>

## Contact us



If you have a **safeguarding** concern about a child outside of school hours you can call the police on 999 if you feel they are at risk of immediate harm or contact Children's Services on 0300 300 0117

Please be reminded that all children need to wear the correct PE kit on PE days.  
The correct PE kit is also needed for sports clubs.  
Socks and hair accessories must be in the school colours.

### School Day Timings

The school day is as follows:

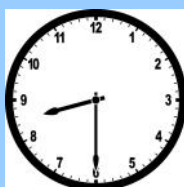
8.25am: Gates open

8.30am: School starts

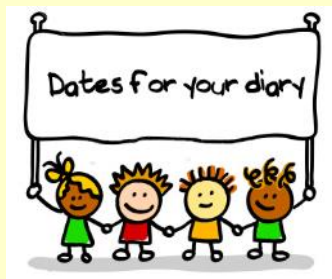
3pm: School ends

3.10pm: Gates close

Many thanks.







### School Term Dates for 2025-2026

Wednesday 15th October:	Harvest Festival in St Mary's Church at 8.45am
Thursday 16th October:	Open afternoon for parents/carers from 2pm
Friday 17th October:	Last day of term; BSA school disco 3pm - 4pm
Monday 3rd November:	Back to school
Sunday 9th November:	Remembrance Parade in Brighstone village
Tuesday 11th November:	Remembrance
Friday 14th November:	InterFaith Day
Tuesday 18th November:	Admissions opens for Reception 2026 intake
Saturday 6th December:	BSA Christmas Fair
Friday 12th December:	Y1 - Y6 pantomime trip (further details to follow)
Monday 15th December:	Christmas Concert in St Mary's Church (further details to follow)
Tuesday 16th December:	Christmas Concert in St Mary's Church (further details to follow)
Thursday 18th December:	Christingle Concert in St Mary's Church (further details to follow)
Friday 19th December:	Last day of term; Christmas Dinner day

Please note that the school will be closed on the following days in this academic year:

- Day 1: Monday 1st September 2025
- Day 2: Tuesday 2nd September 2025
- Day 3: Wednesday 3rd September 2025
- Day 4: Monday 1st June 2026
- Day 5: Monday 27th July 2026