

The Buzz

5th September 2025



Learning and Achieving Through
Love, Courage and Respect

Dear parents, carers and children,



Welcome back to all our families! It was so lovely to see everyone yesterday morning, looking so eager and enthusiastic to start school after the summer holidays. Everyone settled in really well.

I would like to say a big welcome to our new Reception children, as well as to our new children who have joined us in other year groups, and to our two new teachers: Miss Sztypuljak and Mrs Northard. We are delighted that you are a part of our Brighstone family.

You may have noticed that a lot of work has taken place over the summer holidays. We have our new Resourced Provision, called The Nest, in the three end rooms, complete with their newly revamped outside area. Ivy Bee class are now in the Roy Bromley rooms, and our staff room is now between the foyer and the hall. Everywhere has had a new look as well; all the display boards are now in neutral hessian, and soft sofas, cushions, plants and lamps are in every classroom. The library has been rearranged to create more cosy seating areas, and the office is looking very smart and organised with brand new cupboards.



A huge thank you to everyone who very kindly donated their time to helping us over the summer. There were lots of jobs that needed doing, including moving furniture and resources (the hall was chock-a-block), paint walls, back display boards, sort books, organise resources, rearrange the library and office, and lots more... Mr Freeman (site manager) went above and beyond to help with everything (including the many contractors we had on site), and lots of staff members and their partners and children also helped. I would also like to thank Marianne and Tom, Emily and Quinn, Gary and Liam, Giles and Rose, Tony and Sarah and everyone else who helped. We certainly couldn't have done it without everyone's help. All the hard work was worth it - the school is looking great!

You will notice a few events coming up that you might be interested in. The BSA are holding the first meeting on Monday 15th September at 7pm in school. Everyone is welcome - the more the merrier! See the flyer on p3 for more details, as well as the email that was sent.



Mitch Burson and her colleagues from the Neurodiversity Team will be in school on Tuesday 9th September, from 2.00–3.00pm. They will be available to meet with parents and carers on a one-to-one basis to answer any questions or concerns you may have around neurodiversity.

You may have noticed that we have a plethora of apples on our trees in the school grounds. They are ready to be harvested, so please do take as many as you would like, to save them going to waste. There are also lots of crab apples at the front of the school; please do take some if you fancy making crab apple jelly!



I hope you have a lovely weekend.

With very best wishes,
Mrs Lennon and the Brighstone team

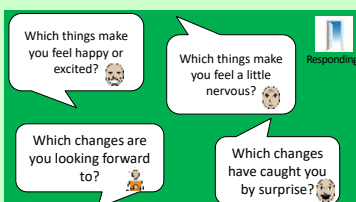
Collective Worship

This week, we been focusing on 'The Same But Different'.



The children have been spotting lots of things that are the same around school, and things that are different. They have been very observant!

We talked about things staying the same, and things changing. Change can bring a mix of emotions: excitement, anticipation, nervousness, anxiety, and more.



A new school year is a fresh start. What are you going to do differently this year?

Dear God,

Thank you for brand new starts and for this new school year.

Thank you for our friends, both current and new.

Please help us to make the most of every new opportunity so that we grow and develop well together.

Amen



Inclusion

Welcome to our new inclusion section! Each week, we will be sharing a Makaton sign, to help with our inclusive ethos.

This week, our word is **hello**:

<https://www.youtube.com/watch?v=DBXp4L9mmLA>



Poetry Corner

I can't wait to meet my new teacher
and all of my classmates and friends.
The first day of school is exciting,
though it's sad summer break has to end.

We all get to meet and have fun.
We take assigned seats and learn names.
We write about summer vacation.
Then we play flashcards and games.

I really love summer vacation.
Swimming and biking's so cool.
But still I can say that my favourite day
is the very first day that starts school.

by Denise Rodgers



Reading Recommendations

Each week, we include a book recommendation from a child and/or adult.

This week, Autumn recommends Fix-It Duck by Jez Alborough.

I like this book because last year I wanted to draw a perfect poster of it. All of the people in Fix-It Duck always need a bit of help.

It is funny because every single animal in Fix-It Duck always has a problem that Fix-It Duck needs to deal with.



Safeguarding

If you have a concern about a child you can call the police on 999 if you feel they are at risk of immediate harm

You can contact the NSPCC:

Contact the NSPCC Helpline

If you have any concerns at all about a child's safety or wellbeing, don't hesitate to contact us.

Call us or email help@nspcc.org.uk

0808 800 5000

Find out more

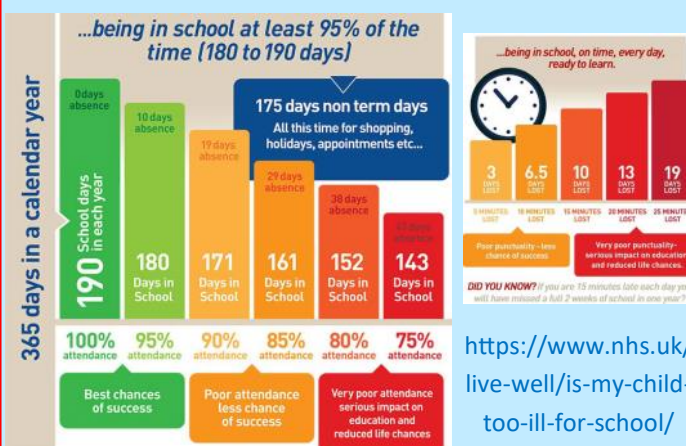
Or call children's services 01983 823435

Attendance Matters!

Week Commencing 1st September
(Whole school attendance target: 96.5%)

Actual Attendance: **98.11%**

Late marks this week: **1**





★ **BRIGHSTONE SCHOOL ASSOCIATION** ★



BSA MEETING



★



15 SEPTEMBER 2025

7:00 PM at Brighstone Primary School

★ **TOPICS OF DISCUSSION**

Upcoming events e.g Round the Island Relay Race,
Volunteer Opportunities, End of term Disco, Pumpkin
competition etc

★ **EVERYONE IS WELCOME!** ★

Parents, teachers, staff, grandparents & community members
come join the fun and stay informed!



Questions? Contact us at at
brighstoneschoolassoc@gmail.com





BSA Astra Recycling Clothing Bank

We take...

Clothes,
Shoes,
Bed Linen,
Accessories
(Such as
belts, hats
& handbags)
Soft Toys



We can't take...

Duvets or
Cushions,
Off Cuts,
Carpet or
Curtains

Located in school entrance car park

*Parents,
Family members
& friends of Brighstone
Primary School*

**Does your place of
work offer the Match
Funding Scheme?**

Get in touch with us if your employers could
help our BSA fundraisers via email at
brighstoneschoolassoc@gmail.com



The Brighstone School Association now
receive 30% commission from Stikins every
time you buy your new name labels.

Quote our number 2721 when you place an order.
A great way to keep your child's belongings safe and
to support the school!

<https://www.stikins.co.uk>

Like Our Pages!



Facebook & Instagram

**Search for
Brighstone School
Association**

**It's never too late to keep
up with our latest news!**

BRIGHSTONE vs NINE ACRES



**ROUND ISLAND
RELAY RACE**
SATURDAY 20 SEPTEMBER 2025

BRIGHSTONE vs NINE ACRES

Join the Relay – We Need You!

We're looking for enthusiastic volunteers to run a leg of the Round Island Relay Race!

You don't need to be a seasoned athlete – this is about community, teamwork, and taking part, not personal bests.

Each runner will cover a distance of 3-6 miles as we relay our way around the Isle of Wight from dawn to dusk. To make it happen, we need around 20 runners to step up and help us complete the full loop to raise money for the Brighstone School Association.

**Ready to run a leg for the team?
Contact Caroline on 07710 297920**

**ROUND ISLAND
RELAY RACE**
SATURDAY 20 SEPTEMBER 2025



Plea for donations of plants!



At Brighstone, we have been developing our classrooms into calmer, more neutral 'therapeutic classrooms'. A **huge thank you** to everyone who has donated neutral cushions, table lamps and plants. It has really helped to make a difference across the school.

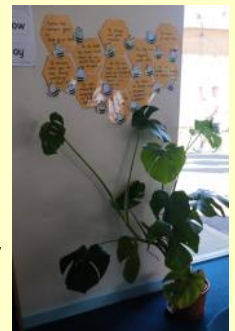


"Therapeutic classrooms are a new approach that redefines the traditional classroom set up. The average UK classroom is bright, cluttered, overwhelming and outdated, and is not designed around the needs of our children today."

Children deserve to feel comfortable, safe and inspired, especially when we know there has been a rise in the numbers of children struggling with their social, motional and mental health. Teachers up and down the country are reporting increases in school refusal, dysregulated behaviours, disengagement and low social skills. Making changes to the classroom can help."

What is a therapeutic classroom?

"Therapeutic classrooms are welcoming, safe, inviting environments that cultivate learning through their design. They calm stress hormones and increase feelings of emotional safety, whilst meeting the emotional and mental health needs of the children. Therapeutic classrooms include calm spaces and flexible seating in every room as standard, and allow children to work where they feel most comfortable. They take into consideration space, lighting, comfortability, accessibility, inclusivity and connective learning. Therapeutic classrooms are inspiring places that children want to be in and are underpinned by science. "



<https://www.tpctherapy.co.uk/therapeutic-classrooms/>

We have got lots of cushions, table lamps and fairy lights (thank you!), and are now looking for a few more plants. If you have any spare pot plants (fairly low maintenance) that you would like to donate, we would be very grateful!

Please contact the school office if you have anything that you would like to donate.

Thank you!



SPRING/SUMMER 2025 MENU



WEEK 2

W/C: 28/04/2025, 19/05/2025, 16/06/2025, 07/07/2025, 28/07/2025,
15/09/2025, 06/10/2025

		MONDAY	TUESDAY	WEDNESDAY	THURSDAY	FRIDAY
HOT DISHES	OPTION 1	Macaroni Cheese 🌱	BBQ Chicken Pizza Served with Potato Wedges	Roast Gammon Served with Roast Potatoes and Gravy	Beef Bolognese Served with Wholewheat Pasta 🍷🍷	Fish Fingers Served with Chips
	OPTION 2	Veggie Meatballs in Tomato Sauce with Wholegrain Rice 🌱🍷🍷	Meatless Feast Cheesy Pizza Served with Potato Wedges 🌱	Sweet Potato, Chickpea and Herb Roast Served with Roast Potatoes and Gravy 🌱	Vegetable Fajita Wrap Served with Wholegrain Rice 🌱🍷	Quorn Dippers Served with Chips 🌱
	OPTION 3	Tomato Pasta Fresh, Homemade Tomato Sauce with Pasta 🌱🍷	Tomato Pasta Fresh, Homemade Tomato Sauce with Pasta 🌱🍷	Tomato Pasta Fresh, Homemade Tomato Sauce with Pasta 🌱🍷	Tomato Pasta Fresh, Homemade Tomato Sauce with Pasta 🌱🍷	Tomato Pasta Fresh, Homemade Tomato Sauce with Pasta 🌱🍷
HOT DISHES ARE SERVED WITH TWO VEGETABLES AND FRESHLY BAKED BREAD						
DELI DISHES	OPTION 4	Jacket Potato with a Choice of Toppings 🌱🍷	Ham or Tuna Baguette	Jacket Potato with a Choice of Toppings 🌱🍷	Ham or Tuna Baguette	Jacket Potato with a Choice of Toppings 🌱🍷
	OPTION 5	No Baguette	Cheese Baguette 🌱	No Baguette	Cheese Baguette 🌱	No Baguette
DELI DISHES ARE SERVED WITH MIXED SALAD						
DESSERT		Apple and Golden Syrup Cake 🌱	Strawberry Jelly	Flapjack with Fruit 🌱	Chocolate Ice Cream	Lemon Cake



AVAILABLE DAILY

Fresh fruit, salad, yoghurt and water



Chartwells
Schools

🌱 Vegetarian 🌱 Vegan 🐟 Oily Fish 🍷 Wholegrain 🍷 Fruity! 🍷 Nutritionist's Choice

Our menu is subject to change. Please be assured that all notified medical diets and allergy requirements will be safely catered for.

Menu_21_202407

SPRING/SUMMER 2025 MENU



WEEK 3

W/C: 05/05/2025, 02/06/2025, 23/06/2025, 14/07/2025, 01/09/2025,
22/09/2025, 13/10/2025

		MONDAY	TUESDAY	WEDNESDAY	THURSDAY	FRIDAY
HOT DISHES	OPTION 1	Cheese and Tomato Pizza Served with Wholewheat Pasta 🍷🌱	Sausage Hot Dog Served with Potato Wedges	Roast Chicken Served with Roast Potatoes and Gravy	Oat Crusted Chicken Served with Wholegrain Rice 🍷	Fish Fingers Served with Chips
	OPTION 2	Chilli No Carne With Crispy Tortilla Served with Wholegrain Rice 🌱🍷🍷	Veggie Sausage Hot Dog Served with Potato Wedges 🌱	Roast Quorn Served with Roast Potatoes and Gravy 🌱	Meatless Shepherd's Pie Served with Gravy 🌱🍷	Quorn Dippers Served with Chips 🌱
	OPTION 3	Tomato Pasta Fresh, Homemade Tomato Sauce with Pasta 🌱🍷	Tomato Pasta Fresh, Homemade Tomato Sauce with Pasta 🌱🍷	Tomato Pasta Fresh, Homemade Tomato Sauce with Pasta 🌱🍷	Tomato Pasta Fresh, Homemade Tomato Sauce with Pasta 🌱🍷	Tomato Pasta Fresh, Homemade Tomato Sauce with Pasta 🌱🍷
HOT DISHES ARE SERVED WITH TWO VEGETABLES AND FRESHLY BAKED BREAD						
DELI DISHES	OPTION 4	Jacket Potato with a Choice of Toppings 🌱🍷	Ham or Tuna Baguette	Jacket Potato with a Choice of Toppings 🌱🍷	Ham or Tuna Baguette	Jacket Potato with a Choice of Toppings 🌱🍷
	OPTION 5	No Baguette	Cheese Baguette 🌱	No Baguette	Cheese Baguette 🌱	No Baguette
DELI DISHES ARE SERVED WITH MIXED SALAD						
DESSERT		Flapjack	Peach and Ginger Pudding 🌱	Oatie Cookie with Fruit 🌱	Vanilla Ice Cream	Crunchy Chocolate Mousse



AVAILABLE DAILY

Fresh fruit, salad, yoghurt and water



Chartwells
Schools

🌱 Vegetarian 🌱 Vegan 🐟 Oily Fish 🍷 Wholegrain 🍷 Fruity! 🍷 Nutritionist's Choice

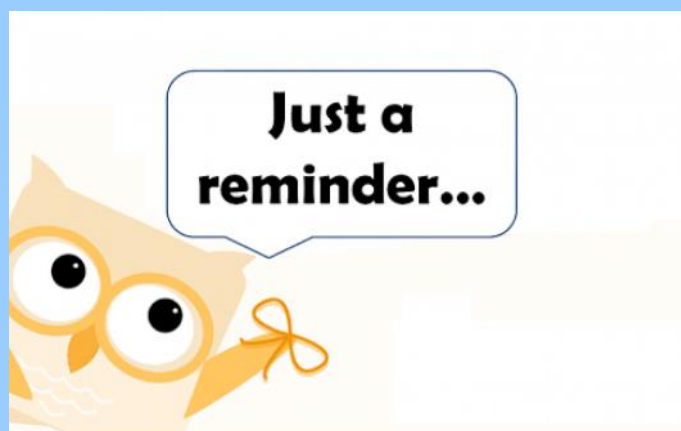
Our menu is subject to change. Please be assured that all notified medical diets and allergy requirements will be safely catered for.

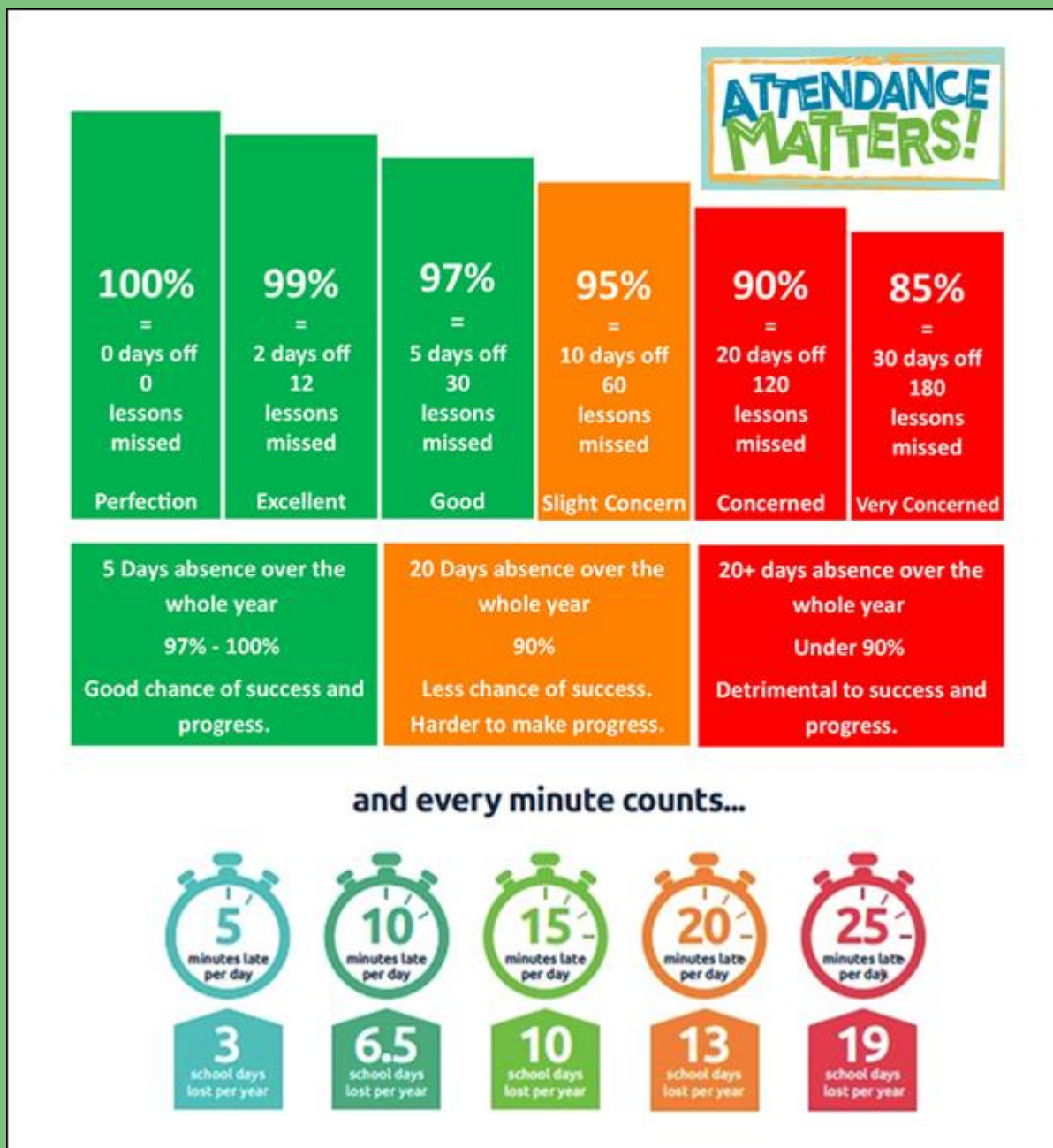
Menu_21_202407

Reminders

- PE Kit is navy blue top/jumper/hoodie with navy blue bottoms - **Branded items are not permitted**
- All hair accessories, socks, shoes and trainers must be in the school colours: navy blue, grey, black or white (no novelty socks)
- All long hair must be tied back (pony tail, bun, plaits etc...) to avoid the spreading of head lice
- No jewellery to be worn other than stud earrings, which must be removed or taped over on PE days
- Gates open at 8.25am and are locked at 8.30am, and in the afternoon, gates are opened at 2.55pm and locked at 3.10pm
- **As teachers are busy welcoming and supervising children first thing in the morning, please could all messages be given to Mrs Pelosi in the office, who will then pass them on to the teacher**
- Only **water** is allowed in drinks bottles, and snacks must be fresh fruit only

Thank you!





At Brighstone Primary School we have high expectations for our children. This begins with attendance and punctuality as they are important life skills to learn.

Good school attendance habits are best started early. Children learn from those around them and you as parents/carers set the standards and expectations for your child. Lateness has a negative impact; being late may disrupt already settled children and lessons, affect achievement and embarrass, worry or upset your child. We understand that there may be an occasional unavoidable instance where you are late, but if it happens frequently, please let us know if there may be something that we can do to help.

What to do if your child is unwell:

Check the NHS Guidance: <https://www.nhs.uk/live-well/is-my-child-too-ill-for-school/>

You should notify the school office before 9am every morning your child is unable to attend due to illness. You can either telephone on 740285 or email on office@brighstoneprimary.org.uk. Telephone calls must be followed up in writing to authorise the (illness) absence.



Respect Charter

at Brighstone CE Aided Primary School

At Brighstone CE Aided Primary School we believe staff, parents and children are entitled to a safe and protective environment in which to learn and work. We strive to ensure that our school offers a warm and nurturing environment. All members of the school community and visitors should demonstrate mutual respect, to feel safe, work together and to use restorative approaches as the foundation of our practice. Any behaviour that may lead to feelings of harassment, alarm or distress to members of our community, will not be tolerated and action taken.

Expectations

- That all adults set a good example to children at all times, showing them how to get along with all members of the school and the wider community.
- That no one - staff, governors, parents, carers, volunteers or children - be subjected to abusive behaviour or any form of threats from visitors on the school premises.
- That physical attacks and threatening behaviour, abusive or insulting language verbal or written (including on social media), to staff, governors, parents, carers, volunteers, children and other users of the school premises will not be tolerated and may lead to a ban from school premises and/or police action.

Types of behaviour that are considered serious and unacceptable

This is not an exhaustive list but seeks to provide illustrations of such behaviour:

- Shouting, either in person or over the telephone
- Speaking in an aggressive/threatening tone
- Physically intimidating, e.g. standing very close
- The use of aggressive hand gestures/exaggerated movements
- Physical threats
- Shaking or holding a fist towards another person
- Swearing and name calling
- Pushing
- Slapping, punching, hitting or kicking
- Racist, homophobic or other hateful behaviour
- Sexist comments or sexual innuendo
- Disrespecting religion or belief
- Inappropriate communications (posting on Social Networking sites, emails or letters, etc.) which could bring the school into disrepute or be deemed as bullying, harassment and/or a hate-related

The school reserves the right to take any necessary actions to ensure that members of the school community are not subjected to any form of abuse in line with policy and procedure. If you choose to engage in these behaviours you may be asked to leave the site or the police may be called.

Thank you for your understanding and support

If your message is **urgent** or about **attendance** contact Mrs Pelosi in the **office**:
01983 740285
office@brighstoneprimary.org.uk
Office Hours 8am - 4pm

If you would like to speak with the **Headteacher** Mrs Lennon, you can find her at the school gate every morning or you can call 740285 to make an appointment with her



For **general enquiries** you can call or email the office, text the school messaging service or send a message to our school **Facebook** page: <https://www.facebook.com/BrighstoneCEPrimarySchool>
Our Facebook page is open so you do not need a personal account to view it

If you would like to contact your child's class teacher, you can email them at the following email addresses. Please allow at least one working day for a reply. For anything urgent, please contact the school office.

Year R - teacher.flowerbee@brighstoneprimary.org.uk
Year 1/2 - teacher.bumblebee@brighstoneprimary.org.uk
Year 3/4 - teacher.honeybee@brighstoneprimary.org.uk
Year 5/6 - teacher.ivybee@brighstoneprimary.org.uk
The Nest resourced provision - thenest@brighstoneprimary.org.uk

If you have concern regarding **safeguarding** or your **child's mental health and wellbeing** please contact Mrs Jones. You can speak to her on the playground every morning, call into the school office or email m.jones@brighstoneprimary.org.uk
safeguarding@brighstoneprimary.org.uk

Our **Newsletter** is published every Friday with key information for parents and carers. You can find it on our school website: <https://www.brighstoneprimary.org.uk/category/the-buzz/>

Contact us



If you have a **safeguarding** concern about a child outside of school hours you can call the police on 999 if you feel they are at risk of immediate harm or contact Children's Services on 0300 300 0117

Please be reminded that all children need to wear the correct PE kit on PE days.
The correct PE kit is also needed for sports clubs.
Socks and hair accessories must be in the school colours.

School Day Timings

The school day is as follows:

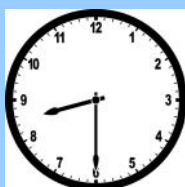
8.25am: Gates open

8.30am: School starts

3pm: School ends

3.10pm: Gates close

Many thanks.





School Term Dates for 2025-2026

Tuesday 9th September:	Neurodiversity drop-in session 2pm - 3pm
Monday 16th September:	BSA meeting at 7pm
Saturday 20th September:	Round the Island Relay Race
Wednesday 15th October:	Harvest Festival TBC
Friday 17th October:	Last day of term
Monday 3rd November:	Back to school

Please note that the school will be closed on the following days in this academic year:

- Day 1: Monday 1st September 2025
- Day 2: Tuesday 2nd September 2025
- Day 3: Wednesday 3rd September 2025
- Day 4: Monday 1st June 2026
- Day 5: Monday 27th July 2026

Term dates are available on our school website: <https://www.brighstoneprimary.org.uk/calendar/>

This page is regularly updated.