

The Buzz

26th September 2025



Learning and Achieving Through
Love, Courage and Respect

Dear parents, carers and children,



Last Saturday saw our annual **Relay Race** against Team Nine Acres. It was a nail-biting finish with only 20 seconds in it, but Team Brighstone won! A huge well done and THANK YOU to everyone who took part, supported and donated. The day was about community, teamwork, and people challenging themselves for the greater good. We've already raised an amazing £855! You can still donate. Every penny goes towards making sure the children don't miss out! <https://gofund.me/663ad00b4>



"On Wednesday, the **U11 Boys' Football Team** hosted Freshwater & Yarmouth and Shalfleet in the Pokemon Cup. The first match was against a strong Shalfleet team, who took a 2-0 lead at half-time. There was a great reply from Brighstone after the break, however, halving the deficit almost immediately, but relentless pressure from Shalfleet saw them finish as 6-1 winners despite some courageous defending and goalkeeping. Our second match saw us come up against Freshwater & Yarmouth in a much tighter contest. The play was end-to-end with plenty of chances for both sides, but our opponents came out on top by a 3-2 score line. It was a great effort from all involved, with goals for Jake, Sam & Reece over the afternoon." Well done to the boys, and thank you to Mr Goldsmith for this match report.

Flower Bees set up a pet shop in the role play area this week, after lots of talking about their own pets and favourite animals. They practised taking it in turns to be the shopkeeper, and to say please and thank you when they bought something from the shop. Well done, Flower Bee class!



"This week, **Bumble Bee Class** received another voice message from Zorb the alien. They first heard from him in Geography last week, and he decided to join them this week for English too! They read through one of his favourite books - Alien's Love Underpants. Zorb challenged the children to make their own aliens and write to him about them. They took on the challenge!" Well done Bumble Bees, and well done to Florie and Hudson - their writing has been displayed in our Proud Gallery! Thank



you to Miss Sztupuljak for this write-up.

"On Thursday, **Honey Bee class** went for a walk around Brighstone as part of their Geography unit 'Are settlements all the same?' Last week, we studied different types of land use, and identified human and physical features of the local landscape on an OS map of the area. Our field work, provided us with the opportunity to use our maps to follow a route, and to see first hand the features that we had identified. We were blessed with glorious weather which made our outing an absolute joy! The children had a super time and learned lots about their local environment. Over the coming weeks, we will be comparing our settlement with that of New Delhi in India." Thank you to Mrs Northard for this report.



"Ivy Bee's RE topic for this half term is 'peace' from a Muslim perspective, so we have been learning how to say the traditional Arabic greeting "Assalamu alaikum" which means "peace be upon you". We have also discovered that Muslims believe that they can find inner peace by obeying Allah and following his guidance in the Qur'an. We have looked at a few passages such as: "No not let your hatred of people incite you to aggression" and have come to the conclusion that this is good advice!" Thank you to Mrs Sharp for this write-up.

I hope you have a lovely weekend.

With very best wishes,

Mrs Lennon and the Brighstone team

More photos are available on our Facebook page.

Collective Worship

This week, our focus is Jesus' words:

Do not be worried



Value: Peace



We learnt how Jesus often used the sights and sounds of the natural world around him to illustrate his stories. In this lesson (Matthew 6.25-28), he asked his listeners to reflect upon the priorities they have found for their lives. In other words, what is of greatest importance to them. Jesus said that, just as the Heavenly Father feeds the birds of the air and clothes the flowers of the field, so he will care for those who first seek after him and then try to follow in his ways.

Jesus said that striving for and worrying about the wrong things will not bring fulfilment, but stress and the absence of peace.

The Lord's Prayer

Our father who art in heaven,
Hallowed be thy name.
Thy kingdom come,
Thy will be done,
On earth as it is in heaven.
Give us this day our daily bread.
And forgive us our trespasses,
As we forgive those who trespass against us.
And lead us not into temptation,
But deliver us from evil.
For thine is the kingdom, the power
And the glory,
For ever and ever.
Amen.





Inclusion

Welcome to our new inclusion section! Each week, we will be sharing a Makaton sign and Widgit symbol, to help with our inclusive ethos.

This week, our word is:

thank you

<https://www.youtube.com/watch?v=JsJjOypea1U>

Makaton sign	Widgit symbol
	

Poetry Corner

The Leaves Are Green

The leaves are green
The nuts are brown,
They hang so high
They will not come down.

Leave them alone
Till frosty weather,
Then they will all
Come down together.

Anonymous



Reading Recommendations

Each week, we include a book recommendation from a child and/or adult.

This week, Mariia recommends Princess Princess by Penny Dale.

I like this book because it is a fairy book. I like fairies. It has got a fairy and a princess in it.

In this story there are fairies and just one princess. There is a party with lots of balloons and cakes.

There are lots of creatures. At the beginning of the book there are animals and a book and everyone is sleeping.

I am looking forward to reading it.



Safeguarding

If you have a concern about a child you can call the police on 999 if you feel they are at risk of immediate harm

You can contact the NSPCC:

Contact the NSPCC Helpline

If you have any concerns at all about a child's safety or wellbeing, don't hesitate to contact us.

Call us or email help@nspcc.org.uk

0808 800 5000

Find out more

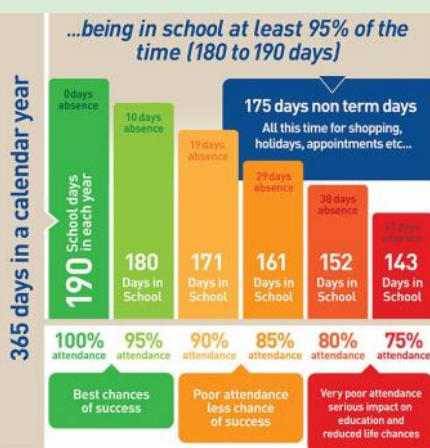
Or call children's services 01983 823435

Attendance Matters!

Week Commencing 22nd September
(Whole school attendance target: 96.5%)

Actual Attendance: **96.46%**

Late marks this week: 9



<https://www.nhs.uk/live-well/is-my-child-too-ill-for-school/>

Golden Book

Flower Bee	Molly, Oscar P, Otis and Olive for using their magnet eyes and listening ears really well.
Bumble Bee	Florence and James for putting 100% into all challenges asked of them and for always going the extra mile. Lexi and Jacob for supporting their classmates when making clay pinch pots. Instead of doing busy bee time, they chose to help others and were superb at this role!
Honey Bee	Poppy for working so hard in Maths and English, and for taking such care of our environment. Theo F for working so hard at his Maths and his thoughtful contributions to our discussions in English.
Ivy Bee	Alice for her constant "hard thinking" in all of her work. Hugh for all his "hard thinking" - particularly in music describing how music changes to create suspense.
Bee-Haviour	Jake for always showing a positive attitude to his learning and being kind and supporting his friend with their learning.
Sports Bee	Luka-Bear for great start to PE in Year 2, demonstrating brilliant teamwork, especially communication skills when working with a partner.





BSA Astra Recycling Clothing Bank

We take...

Clothes,
Shoes,
Bed Linen,
Accessories
(Such as
belts, hats
& handbags)
Soft Toys



We can't take...

Duvets or
Cushions,
Off Cuts,
Carpet or
Curtains

Located in school entrance car park

*Parents,
Family members
& friends of Brighstone
Primary School*

**Does your place of
work offer the Match
Funding Scheme?**

Get in touch with us if your employers could
help our BSA fundraisers via email at
brighstoneschoolassoc@gmail.com



The Brighstone School Association now
receive 30% commission from Stikins every
time you buy your new name labels.

Quote our number 2721 when you place an order.
A great way to keep your child's belongings safe and
to support the school!

<https://www.stikins.co.uk>

Like Our Pages!



Facebook & Instagram

**Search for
Brighstone School
Association**

**It's never too late to keep
up with our latest news!**

Plea for donations of plants!



At Brighstone, we have been developing our classrooms into calmer, more neutral 'therapeutic classrooms'. A **huge thank you** to everyone who has donated neutral cushions, table lamps and plants. It has really helped to make a difference across the school.

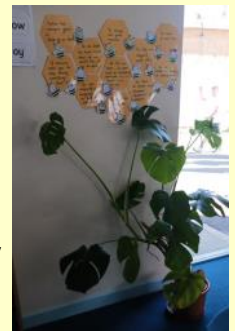


"Therapeutic classrooms are a new approach that redefines the traditional classroom set up. The average UK classroom is bright, cluttered, overwhelming and outdated, and is not designed around the needs of our children today."

Children deserve to feel comfortable, safe and inspired, especially when we know there has been a rise in the numbers of children struggling with their social, motional and mental health. Teachers up and down the country are reporting increases in school refusal, dysregulated behaviours, disengagement and low social skills. Making changes to the classroom can help."

What is a therapeutic classroom?

"Therapeutic classrooms are welcoming, safe, inviting environments that cultivate learning through their design. They calm stress hormones and increase feelings of emotional safety, whilst meeting the emotional and mental health needs of the children. Therapeutic classrooms include calm spaces and flexible seating in every room as standard, and allow children to work where they feel most comfortable. They take into consideration space, lighting, comfortability, accessibility, inclusivity and connective learning. Therapeutic classrooms are inspiring places that children want to be in and are underpinned by science. "

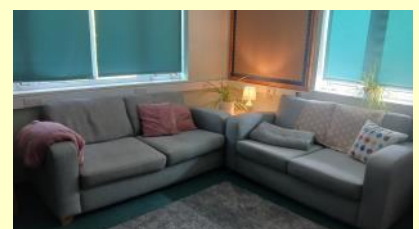


<https://www.tpctherapy.co.uk/therapeutic-classrooms/>

We have got lots of cushions, table lamps and fairy lights (thank you!), and are now looking for a few more plants. If you have any spare pot plants (fairly low maintenance) that you would like to donate, we would be very grateful!

Please contact the school office if you have anything that you would like to donate.

Thank you!



School Dinners

Children in **Year R, 1 and 2** are entitled to a 'universal' **free** school meal every day.

New Price Reminder

Children in Years 3-6 are charged at **£3.35** per day.

Please note the dates to see which week to look at.



ARE YOU A WINNER?

Every Thursday, check under your plate for a winner sticker!

1. Clear your plate
2. Check if you have a sticker
3. If you do, show a member of kitchen staff
4. Collect your prize

Chartwells Schools Good luck!

SPRING/SUMMER 2025 MENU		WEEK 1				
		W/C: 21/04/2025, 12/05/2025, 09/06/2025, 30/06/2025, 21/07/2025, 08/09/2025, 29/09/2025				
		MONDAY	TUESDAY	WEDNESDAY	THURSDAY	FRIDAY
HOT DISHES	OPTION 1	Cheese and Tomato Pizza Served with Wholewheat Pasta	BBQ Chicken Served with Rainbow Rice	Roast Pork Served with Roast Potatoes and Gravy	Classic Beef Burger Served with Potato Wedges	Battered Fish Served with Chips
	OPTION 2	Broccoli and Leek Tart	Macaroni Cheese	Butternut Squash and Tomato Bake Served with Roast Potatoes and Gravy	Quorn Burger Served with Potato Wedges	Veggie Fingers Served with Chips
	OPTION 3	Tomato Pasta Fresh, Homemade Tomato Sauce with Pasta	Tomato Pasta Fresh, Homemade Tomato Sauce with Pasta	Tomato Pasta Fresh, Homemade Tomato Sauce with Pasta	Tomato Pasta Fresh, Homemade Tomato Sauce with Pasta	Tomato Pasta Fresh, Homemade Tomato Sauce with Pasta
HOT DISHES ARE SERVED WITH TWO VEGETABLES AND FRESHLY BAKED BREAD						
DELI DISHES	OPTION 4	Jacket Potato with a Choice of Toppings	Ham or Tuna Baguette	Jacket Potato with a Choice of Toppings	Ham or Tuna Baguette	Jacket Potato with a Choice of Toppings
	OPTION 5	No Baguette	Cheese Baguette	No Baguette	Cheese Baguette	No Baguette
DELI DISHES ARE SERVED WITH MIXED SALAD						
DESSERT		Chocolate Brownie	Fruits of the Forest Jelly	Banoffee Pie	Strawberry Ice Cream	Ginger Biscuit with Fruit

AVAILABLE DAILY
 Fresh fruit, salad, yoghurt and water

Vegetarian
 Vegan
 Oily Fish
 Wholegrain
 Fruity!
 Nutritionist's Choice

Our menu is subject to change. Please be assured that all notified medical diets and allergy requirements will be safely catered for.

SPRING/SUMMER 2025 MENU



WEEK 2

W/C: 28/04/2025, 19/05/2025, 16/06/2025, 07/07/2025, 28/07/2025,
15/09/2025, 06/10/2025

		MONDAY	TUESDAY	WEDNESDAY	THURSDAY	FRIDAY
HOT DISHES	OPTION 1	Macaroni Cheese	BBQ Chicken Pizza Served with Potato Wedges	Roast Gammon Served with Roast Potatoes and Gravy	Beef Bolognese Served with Wholewheat Pasta	Fish Fingers Served with Chips
	OPTION 2	Veggie Meatballs in Tomato Sauce with Wholegrain Rice	Meatless Feast Cheesy Pizza Served with Potato Wedges	Sweet Potato, Chickpea and Herb Roast Served with Roast Potatoes and Gravy	Vegetable Fajita Wrap Served with Wholegrain Rice	Quorn Dippers Served with Chips
	OPTION 3	Tomato Pasta Fresh, Homemade Tomato Sauce with Pasta	Tomato Pasta Fresh, Homemade Tomato Sauce with Pasta	Tomato Pasta Fresh, Homemade Tomato Sauce with Pasta	Tomato Pasta Fresh, Homemade Tomato Sauce with Pasta	Tomato Pasta Fresh, Homemade Tomato Sauce with Pasta
HOT DISHES ARE SERVED WITH TWO VEGETABLES AND FRESHLY BAKED BREAD						
DELI DISHES	OPTION 4	Jacket Potato with a Choice of Toppings	Ham or Tuna Baguette	Jacket Potato with a Choice of Toppings	Ham or Tuna Baguette	Jacket Potato with a Choice of Toppings
	OPTION 5	No Baguette	Cheese Baguette	No Baguette	Cheese Baguette	No Baguette
DELI DISHES ARE SERVED WITH MIXED SALAD						
DESSERT		Apple and Golden Syrup Cake	Strawberry Jelly	Flapjack with Fruit	Chocolate Ice Cream	Lemon Cake



AVAILABLE DAILY
Fresh fruit, salad, yoghurt and water



Chartwells
Schools

Vegetarian
 Vegan
 Oily Fish
 Wholegrain
 Fruity!
 Nutritionist's Choice

Our menu is subject to change. Please be assured that all notified medical diets and allergy requirements will be safely catered for.

Menu_21_202407

SPRING/SUMMER 2025 MENU



WEEK 3

W/C: 05/05/2025, 02/06/2025, 23/06/2025, 14/07/2025, 01/09/2025,
22/09/2025, 13/10/2025

		MONDAY	TUESDAY	WEDNESDAY	THURSDAY	FRIDAY
HOT DISHES	OPTION 1	Cheese and Tomato Pizza Served with Wholewheat Pasta	Sausage Hot Dog Served with Potato Wedges	Roast Chicken Served with Roast Potatoes and Gravy	Oat Crusted Chicken Served with Wholegrain Rice	Fish Fingers Served with Chips
	OPTION 2	Chilli No Carne With Crispy Tortilla Served with Wholegrain Rice	Veggie Sausage Hot Dog Served with Potato Wedges	Roast Quorn Served with Roast Potatoes and Gravy	Meatless Shepherd's Pie Served with Gravy	Quorn Dippers Served with Chips
	OPTION 3	Tomato Pasta Fresh, Homemade Tomato Sauce with Pasta	Tomato Pasta Fresh, Homemade Tomato Sauce with Pasta	Tomato Pasta Fresh, Homemade Tomato Sauce with Pasta	Tomato Pasta Fresh, Homemade Tomato Sauce with Pasta	Tomato Pasta Fresh, Homemade Tomato Sauce with Pasta
HOT DISHES ARE SERVED WITH TWO VEGETABLES AND FRESHLY BAKED BREAD						
DELI DISHES	OPTION 4	Jacket Potato with a Choice of Toppings	Ham or Tuna Baguette	Jacket Potato with a Choice of Toppings	Ham or Tuna Baguette	Jacket Potato with a Choice of Toppings
	OPTION 5	No Baguette	Cheese Baguette	No Baguette	Cheese Baguette	No Baguette
DELI DISHES ARE SERVED WITH MIXED SALAD						
DESSERT		Flapjack	Peach and Ginger Pudding	Oatie Cookie with Fruit	Vanilla Ice Cream	Crunchy Chocolate Mousse



AVAILABLE DAILY
Fresh fruit, salad, yoghurt and water



Chartwells
Schools

Vegetarian
 Vegan
 Oily Fish
 Wholegrain
 Fruity!
 Nutritionist's Choice

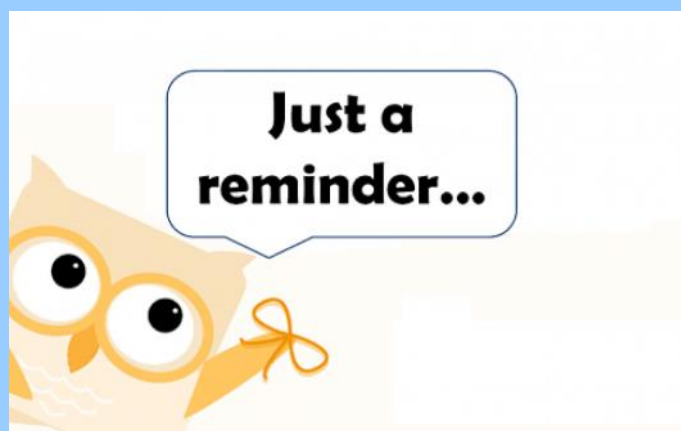
Our menu is subject to change. Please be assured that all notified medical diets and allergy requirements will be safely catered for.

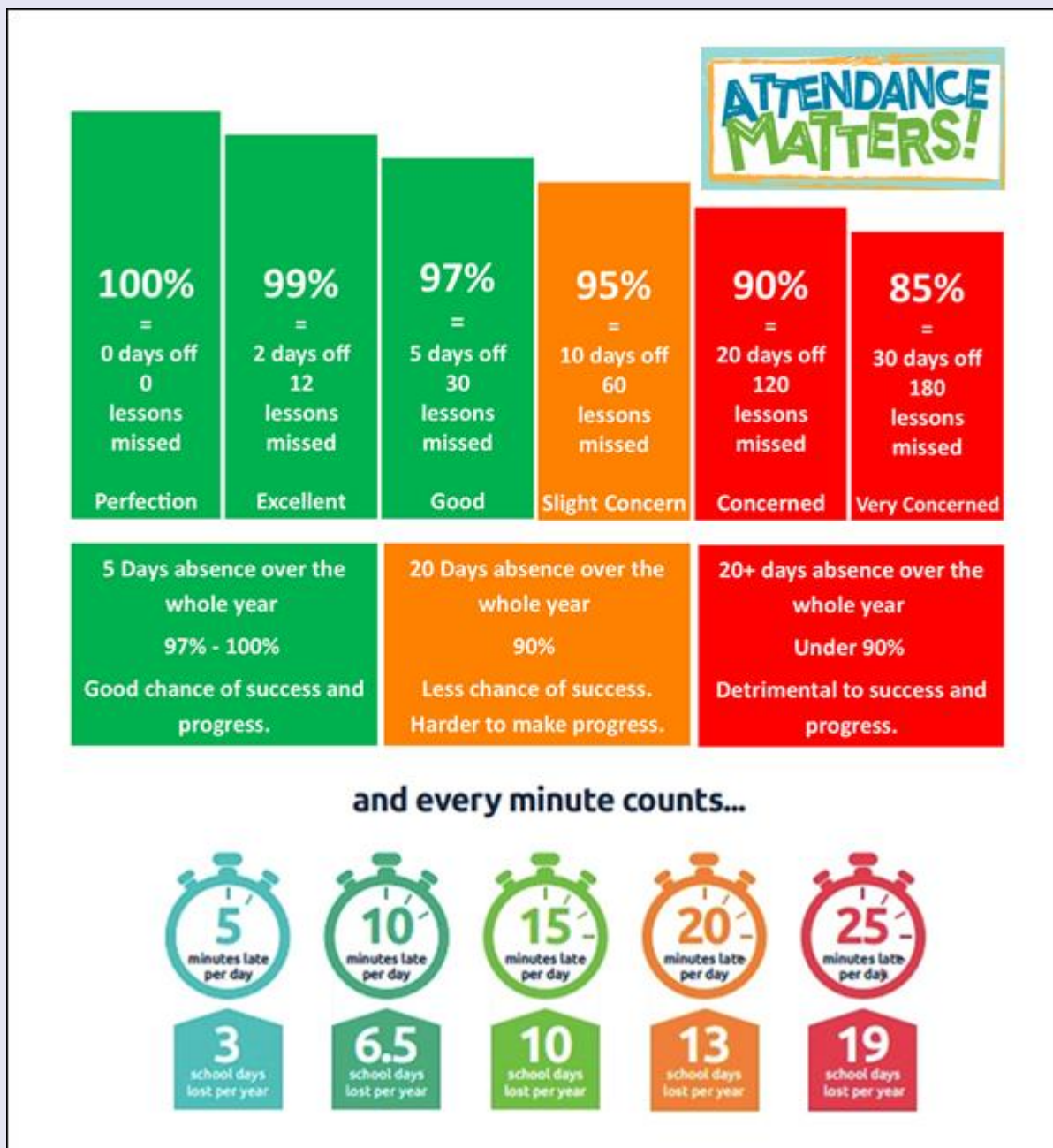
Menu_21_202407

Reminders

- PE Kit is navy blue top/jumper/hoodie with navy blue bottoms - **Branded items are not permitted**
- All hair accessories, socks, shoes and trainers must be in the school colours: navy blue, grey, black or white (no novelty socks)
- All long hair must be tied back (pony tail, bun, plaits etc...) to avoid the spreading of head lice
- No jewellery to be worn other than stud earrings, which must be removed or taped over on PE days
- Gates open at 8.25am and are locked at 8.30am, and in the afternoon, gates are opened at 2.55pm and locked at 3.10pm
- **As teachers are busy welcoming and supervising children first thing in the morning, please could all messages be given to Mrs Pelosi in the office, who will then pass them on to the teacher**
- Only **water** is allowed in drinks bottles, and snacks must be fresh fruit only

Thank you!





At Brighstone Primary School we have high expectations for our children. This begins with attendance and punctuality as they are important life skills to learn.

Good school attendance habits are best started early. Children learn from those around them and you as parents/carers set the standards and expectations for your child. Lateness has a negative impact; being late may disrupt already settled children and lessons, affect achievement and embarrass, worry or upset your child. We understand that there may be an occasional unavoidable instance where you are late, but if it happens frequently, please let us know if there may be something that we can do to help.

What to do if your child is unwell:

Check the NHS Guidance: <https://www.nhs.uk/live-well/is-my-child-too-ill-for-school/>

You should notify the school office before 9am every morning your child is unable to attend due to illness. You can either telephone on 740285 or email on office@brighstoneprimary.org.uk. Telephone calls must be followed up in writing to authorise the (illness) absence.



Respect Charter

at Brighstone CE Aided Primary School

At Brighstone CE Aided Primary School we believe staff, parents and children are entitled to a safe and protective environment in which to learn and work. We strive to ensure that our school offers a warm and nurturing environment. All members of the school community and visitors should demonstrate mutual respect, to feel safe, work together and to use restorative approaches as the foundation of our practice. Any behaviour that may lead to feelings of harassment, alarm or distress to members of our community, will not be tolerated and action taken.

Expectations

- That all adults set a good example to children at all times, showing them how to get along with all members of the school and the wider community.
- That no one - staff, governors, parents, carers, volunteers or children - be subjected to abusive behaviour or any form of threats from visitors on the school premises.
- That physical attacks and threatening behaviour, abusive or insulting language verbal or written (including on social media), to staff, governors, parents, carers, volunteers, children and other users of the school premises will not be tolerated and may lead to a ban from school premises and/or police action.

Types of behaviour that are considered serious and unacceptable

This is not an exhaustive list but seeks to provide illustrations of such behaviour:

- Shouting, either in person or over the telephone
- Speaking in an aggressive/threatening tone
- Physically intimidating, e.g. standing very close
- The use of aggressive hand gestures/exaggerated movements
- Physical threats
- Shaking or holding a fist towards another person
- Swearing and name calling
- Pushing
- Slapping, punching, hitting or kicking
- Racist, homophobic or other hateful behaviour
- Sexist comments or sexual innuendo
- Disrespecting religion or belief
- Inappropriate communications (posting on Social Networking sites, emails or letters, etc.) which could bring the school into disrepute or be deemed as bullying, harassment and/or a hate-related

The school reserves the right to take any necessary actions to ensure that members of the school community are not subjected to any form of abuse in line with policy and procedure. If you choose to engage in these behaviours you may be asked to leave the site or the police may be called.

Thank you for your understanding and support

If your message is **urgent** or about **attendance** contact Mrs Pelosi in the **office**:
01983 740285
office@brighstoneprimary.org.uk
Office Hours 8am - 4pm

If you would like to speak with the **Headteacher** Mrs Lennon, you can find her at the school gate every morning or you can call 740285 to make an appointment with her



For **general enquiries** you can call or email the office, text the school messaging service or send a message to our school **Facebook** page: <https://www.facebook.com/BrighstoneCEPrimarySchool>
Our Facebook page is open so you do not need a personal account to view it

If you would like to contact your child's class teacher, you can email them at the following email addresses. Please allow at least one working day for a reply. For anything urgent, please contact the school office.

Year R - teacher.flowerbee@brighstoneprimary.org.uk
Year 1/2 - teacher.bumblebee@brighstoneprimary.org.uk
Year 3/4 - teacher.honeybee@brighstoneprimary.org.uk
Year 5/6 - teacher.ivybee@brighstoneprimary.org.uk
The Nest resourced provision - thenest@brighstoneprimary.org.uk

If you have concern regarding **safeguarding** or your **child's mental health and wellbeing** please contact Mrs Jones. You can speak to her on the playground every morning, call into the school office or email m.jones@brighstoneprimary.org.uk
safeguarding@brighstoneprimary.org.uk

Our **Newsletter** is published every Friday with key information for parents and carers. You can find it on our school website: <https://www.brighstoneprimary.org.uk/category/the-buzz/>

Contact us



If you have a **safeguarding** concern about a child outside of school hours you can call the police on 999 if you feel they are at risk of immediate harm or contact Children's Services on 0300 300 0117

Please be reminded that all children need to wear the correct PE kit on PE days.
The correct PE kit is also needed for sports clubs.
Socks and hair accessories must be in the school colours.

School Day Timings

The school day is as follows:

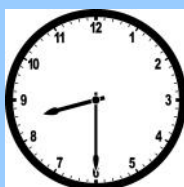
8.25am: Gates open

8.30am: School starts

3pm: School ends

3.10pm: Gates close

Many thanks.





School Term Dates for 2025-2026

Monday 29th September:	School photographer (individual photos)
Monday 29th September:	Parents Evening
Thursday 2nd October:	Parents Evening
Friday 10th October:	Go Yellow Day for Mountbatten Hospice (non-uniform day - wear something yellow)
Wednesday 15th October:	Harvest Festival in St Mary's Church at 8.45am
Thursday 16th October:	Open afternoon for parents/carers from 2pm
Friday 17th October:	Last day of term
Monday 3rd November:	Back to school

Please note that the school will be closed on the following days in this academic year:

- Day 1: Monday 1st September 2025
- Day 2: Tuesday 2nd September 2025
- Day 3: Wednesday 3rd September 2025
- Day 4: Monday 1st June 2026
- Day 5: Monday 27th July 2026

Term dates are available on our school website: <https://www.brighstoneprimary.org.uk/calendar/>

This page is regularly updated.