

# The Buzz

## 19th September 2025



Learning and Achieving Through  
Love, Courage and Respect

Dear parents, carers and children,

The **BSA** held the first meeting of the academic year on Monday evening. It was good to see a few parents/carers join in person or via Teams, and there were lots of events discussed for the months ahead. Please see the minutes that were emailed out for further information about what is coming up and what you may want to help with.



Tomorrow sees the return of our annual **Relay Race** against Nine Acres Primary. Starting at Seaclose and going in opposite directions, two teams of runners are taking on a 34-mile loop of East Wight passing the baton at various handovers. This is arranged by the BSA to raise funds for the school to help towards the cost of those "extra treats" for the children and to help keep down the cost of school trips for parents/carers. We are grateful to everyone taking part to raise these much needed funds. You can follow the team's progress on our school Facebook page and donate here: <https://gofund.me/39736de21>

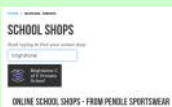
Go Team Brighstone!!

"Yesterday, some of our Year 4, 5 & 6 girls travelled to Carisbrooke Primary School to take part in their **Pokemon Cup football tournament**.



The girls faced a tough task in their opening game as they came up against a strong Carisbrooke side. After being 4-0 down at half-time, the girls showed brilliant grit in the second half, which saw no further goals. There was no rest for the girls, as they were straight back on to face St Thomas of Canterbury! After a tight opening to the game, Maddie broke the deadlock with a mazy run to put us 1-0 up. Further goals either side of half-time saw Maddie grab a hat-trick, putting us into a 3-0 lead, before St Thomas' grabbed a consolation before full time, Brighstone winning 3-1.

It was a great afternoon of football and the whole team were a credit to the school. There was some outstanding goalkeeping, brilliant defending, fantastic passing and stunning shooting, but most of all, the girls all played as a team and had a smile on their faces the whole time!" (Thank you to Mr Goldsmith for providing this match report.)



It has been brought to our attention that some people have been having difficulty buying the **PE clothing** with the Brighstone logo on from Pendle. If you click on the link and type Brighstone in the search box, you will be taken to the logoed items. Please let us know if you have any questions. <https://www.pendlesportswear.co.uk/school-shops/> (Just a reminder that it isn't mandatory to buy these logoed items.)

### Reminders

We will be holding an **open afternoon** for current parents/carers on Thursday 16th October from 2pm - 2.45pm. You are welcome to come along and join in with your child's learning. Please do let us know via the school office so we know how many to expect!

**Parents evenings** for this term are organised for Monday 29th September and Thursday 2nd October. This is an opportunity for you to meet with your child's class teacher to discuss how your child has settled in, what they are focusing on and how you can support them at home. Please keep an eye out for a letter (via email) for information about how to book your slot.

I hope you have a lovely weekend. Good luck to our runners tomorrow!

With very best wishes,

Mrs Lennon and the Brighstone team



# Collective Worship

This week, our focus is Jesus:



Value: Hope

Millions of adults and children in churches and schools around the world pray a special prayer that Jesus himself taught his followers. We call it 'The Lord's Prayer'.

The Lord's Prayer is a prayer of hope for the world.

We watched how to say the Lord's Prayer with Makaton signs.



[https://www.youtube.com/watch?v=\\_a7mYX\\_9UIU](https://www.youtube.com/watch?v=_a7mYX_9UIU)

### The Lord's Prayer

Our Father who art in heaven,  
Hallowed be thy name.  
Thy Kingdom come,  
Thy will be done.  
On earth as it is in heaven.  
Give us this day our daily bread.  
And forgive us our trespasses,  
As we forgive those who trespass against us.  
And lead us not into temptation,  
But deliver us from evil.  
For thine is the Kingdom, the power  
And the glory  
For ever and ever.  
Amen.



## Inclusion

Welcome to our new inclusion section! Each week, we will be sharing a Makaton sign and Widgit symbol, to help with our inclusive ethos.

This week, our word is:

**please**

<https://www.youtube.com/watch?v=n9Bky0WG47s>

Makaton sign



Widgit symbol



## Poetry Corner

### The Eagle

He clasps the crag with crooked hands,  
Close to the sun in lonely lands,  
Ring'd with the azure world, he stands.

The wrinkled sea beneath him crawls;  
He watches from his mountain walls,  
And like a thunderbolt he falls.

Alfred, Lord Tennyson



## Reading Recommendations

Each week, we include a book recommendation from a child and/or adult.

This week, Alyssa recommends *The Great Chocoplot* by Chris Callaghan.

I like this book because it's funny and it's got quite a bit of challenging words that you could use to learn. It's also good because if you like reading, you can read it.

It's got more than 200 pages.

The chocolate is going to disappear and it's got a little girl called Jelly. Jelly and her mum are watching telly and they hear on the news that the chocolate is going to go missing.

There's also a man who doesn't like little children. He talks rudely to Jelly. I haven't finished it yet. I am looking forward to the end because I want to find out what happens.



## Safeguarding

If you have a concern about a child you can call the police on 999 if you feel they are at risk of immediate harm

You can contact the NSPCC:

### **Contact the NSPCC Helpline**

If you have any concerns at all about a child's safety or wellbeing, don't hesitate to contact us.

Call us or email [help@nspcc.org.uk](mailto:help@nspcc.org.uk)

**0808 800 5000**

Find out more

Or call children's services 01983 823435

## **Attendance Matters!**

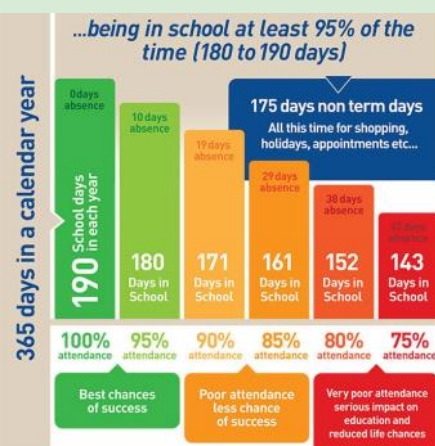
Week Commencing 15th September  
(Whole school attendance target: 96.5%)

Actual Attendance: **96.34%**

Late marks this week: 7



<https://www.nhs.uk/>



[live-well/is-my-child-too-ill-for-school/](https://www.nhs.uk/live-well/is-my-child-too-ill-for-school/)

# Golden Book

<b>Flower Bee</b>	Ella, Evan, Iviee and Kobe for settling into their new classroom and routines really well.
<b>Bumble Bee</b>	Austin, Arthur G and Florie F for taking on the daily challenges and putting 100% effort in, even when the challenge is tricky! Autumn for being really helpful towards her teachers and friends, for having a great attitude towards learning and for always demonstrating our three school values.
<b>Honey Bee</b>	Bram for being wise and resourceful when he has found things tricky and showing his love of learning. Bethan for always making the right choices and demonstrating excellent learning behaviours.
<b>Ivy Bee</b>	Jake and Luna for hard thinking - using new vocabulary and applying ideas in all areas of his work. Flo for a carefully created self-portrait collage.
<b>Bee-Haviour</b>	Oscar S for being a supportive and kind friend when another child needed some support this week.
<b>Sports Bee</b>	Noah B for making a great start to PE at Brighstone, putting 100% into lessons and showing the school games values.







## BSA Astra Recycling Clothing Bank

### We take...

Clothes,  
Shoes,  
Bed Linen,  
Accessories  
(Such as  
belts, hats  
& handbags)  
Soft Toys



### We can't take...

Duvets or  
Cushions,  
Off Cuts,  
Carpet or  
Curtains

Located in school entrance car park

*Parents,  
Family members  
& friends of Brighstone  
Primary School*

**Does your place of  
work offer the Match  
Funding Scheme?**

Get in touch with us if your employers could  
help our BSA fundraisers via email at  
[brighstoneschoolassoc@gmail.com](mailto:brighstoneschoolassoc@gmail.com)



The Brighstone School Association now  
receive 30% commission from Stikins every  
time you buy your new name labels.

Quote our number 2721 when you place an order.  
A great way to keep your child's belongings safe and  
to support the school!

<https://www.stikins.co.uk>

**Like Our Pages!**



**Facebook & Instagram**

**Search for  
Brighstone School  
Association**

**It's never too late to keep  
up with our latest news!**

# BRIGHSTONE vs NINE ACRES



**ROUND ISLAND  
RELAY RACE**  
SATURDAY 20 SEPTEMBER 2025

# BRIGHSTONE vs NINE ACRES

**Join the Relay – We Need You!**

**We're looking for enthusiastic volunteers to run a leg of the Round Island Relay Race!**

**You don't need to be a seasoned athlete – this is about community, teamwork, and taking part, not personal bests.**

Each runner will cover a distance of 3-6 miles as we relay our way around the Isle of Wight from dawn to dusk. To make it happen, we need around 20 runners to step up and help us complete the full loop to raise money for the Brighstone School Association.

**Ready to run a leg for the team?  
Contact Caroline on 07710 297920**

**ROUND ISLAND  
RELAY RACE**  
SATURDAY 20 SEPTEMBER 2025





# Plea for donations of plants!



At Brighstone, we have been developing our classrooms into calmer, more neutral 'therapeutic classrooms'. A **huge thank you** to everyone who has donated neutral cushions, table lamps and plants. It has really helped to make a difference across the school.

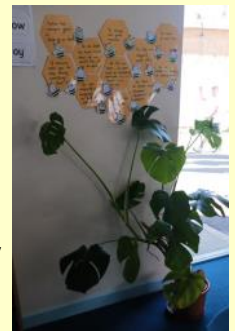


*"Therapeutic classrooms are a new approach that redefines the traditional classroom set up. The average UK classroom is bright, cluttered, overwhelming and outdated, and is not designed around the needs of our children today."*

*Children deserve to feel comfortable, safe and inspired, especially when we know there has been a rise in the numbers of children struggling with their social, motional and mental health. Teachers up and down the country are reporting increases in school refusal, dysregulated behaviours, disengagement and low social skills. Making changes to the classroom can help."*

## What is a therapeutic classroom?

*"Therapeutic classrooms are welcoming, safe, inviting environments that cultivate learning through their design. They calm stress hormones and increase feelings of emotional safety, whilst meeting the emotional and mental health needs of the children. Therapeutic classrooms include calm spaces and flexible seating in every room as standard, and allow children to work where they feel most comfortable. They take into consideration space, lighting, comfortability, accessibility, inclusivity and connective learning. Therapeutic classrooms are inspiring places that children want to be in and are underpinned by science. "*

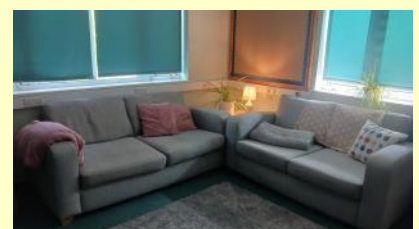


<https://www.tpctherapy.co.uk/therapeutic-classrooms/>

We have got lots of cushions, table lamps and fairy lights (thank you!), and are now looking for a few more plants. If you have any spare pot plants (fairly low maintenance) that you would like to donate, we would be very grateful!

Please contact the school office if you have anything that you would like to donate.

**Thank you!**



## School Dinners

Children in **Year R, 1 and 2** are entitled to a 'universal' **free** school meal every day.

**New Price Reminder**

Children in Years 3-6 are charged at **£3.35** per day.

Please note the dates to see which week to look at.



### ARE YOU A WINNER?

Every Thursday, check under your plate for a winner sticker!

1. Clear your plate
2. Check if you have a sticker
3. If you do, show a member of kitchen staff
4. Collect your prize

Chartwells **Good luck!**

SPRING/SUMMER 2025 MENU		WEEK 1				
		W/C: 21/04/2025, 12/05/2025, 09/06/2025, 30/06/2025, 21/07/2025, 08/09/2025, 29/09/2025				
		MONDAY	TUESDAY	WEDNESDAY	THURSDAY	FRIDAY
HOT DISHES	OPTION 1	Cheese and Tomato Pizza Served with Wholewheat Pasta	BBQ Chicken Served with Rainbow Rice	Roast Pork Served with Roast Potatoes and Gravy	Classic Beef Burger Served with Potato Wedges	Battered Fish Served with Chips
	OPTION 2	Broccoli and Leek Tart	Macaroni Cheese	Butternut Squash and Tomato Bake Served with Roast Potatoes and Gravy	Quorn Burger Served with Potato Wedges	Veggie Fingers Served with Chips
	OPTION 3	Tomato Pasta Fresh, Homemade Tomato Sauce with Pasta	Tomato Pasta Fresh, Homemade Tomato Sauce with Pasta	Tomato Pasta Fresh, Homemade Tomato Sauce with Pasta	Tomato Pasta Fresh, Homemade Tomato Sauce with Pasta	Tomato Pasta Fresh, Homemade Tomato Sauce with Pasta
HOT DISHES ARE SERVED WITH TWO VEGETABLES AND FRESHLY BAKED BREAD						
DELI DISHES	OPTION 4	Jacket Potato with a Choice of Toppings	Ham or Tuna Baguette	Jacket Potato with a Choice of Toppings	Ham or Tuna Baguette	Jacket Potato with a Choice of Toppings
	OPTION 5	No Baguette	Cheese Baguette	No Baguette	Cheese Baguette	No Baguette
DELI DISHES ARE SERVED WITH MIXED SALAD						
DESSERT		Chocolate Brownie	Fruits of the Forest Jelly	Banoffee Pie	Strawberry Ice Cream	Ginger Biscuit with Fruit

**AVAILABLE DAILY**  
 Fresh fruit, salad, yoghurt and water

**Chartwells**  
 Schools

Vegetarian
 Vegan
 Oily Fish
 Wholegrain
 Fruity!
 Nutritionist's Choice

Our menu is subject to change. Please be assured that all notified medical diets and allergy requirements will be safely catered for.



# SPRING/SUMMER 2025 MENU



## WEEK 2

W/C: 28/04/2025, 19/05/2025, 16/06/2025, 07/07/2025, 28/07/2025,  
15/09/2025, 06/10/2025

		MONDAY	TUESDAY	WEDNESDAY	THURSDAY	FRIDAY
HOT DISHES	OPTION 1	Macaroni Cheese	BBQ Chicken Pizza Served with Potato Wedges	Roast Gammon Served with Roast Potatoes and Gravy	Beef Bolognese Served with Wholewheat Pasta	Fish Fingers Served with Chips
	OPTION 2	Veggie Meatballs in Tomato Sauce with Wholegrain Rice	Meatless Feast Cheesy Pizza Served with Potato Wedges	Sweet Potato, Chickpea and Herb Roast Served with Roast Potatoes and Gravy	Vegetable Fajita Wrap Served with Wholegrain Rice	Quorn Dippers Served with Chips
	OPTION 3	Tomato Pasta Fresh, Homemade Tomato Sauce with Pasta	Tomato Pasta Fresh, Homemade Tomato Sauce with Pasta	Tomato Pasta Fresh, Homemade Tomato Sauce with Pasta	Tomato Pasta Fresh, Homemade Tomato Sauce with Pasta	Tomato Pasta Fresh, Homemade Tomato Sauce with Pasta
HOT DISHES ARE SERVED WITH TWO VEGETABLES AND FRESHLY BAKED BREAD						
DELI DISHES	OPTION 4	Jacket Potato with a Choice of Toppings	Ham or Tuna Baguette	Jacket Potato with a Choice of Toppings	Ham or Tuna Baguette	Jacket Potato with a Choice of Toppings
	OPTION 5	No Baguette	Cheese Baguette	No Baguette	Cheese Baguette	No Baguette
DELI DISHES ARE SERVED WITH MIXED SALAD						
DESSERT		Apple and Golden Syrup Cake	Strawberry Jelly	Flapjack with Fruit	Chocolate Ice Cream	Lemon Cake



**AVAILABLE DAILY**  
Fresh fruit, salad, yoghurt and water



**Chartwells**  
Schools

Vegetarian 
 Vegan 
 Oily Fish 
 Wholegrain 
 Fruity! 
 Nutritionist's Choice

Our menu is subject to change. Please be assured that all notified medical diets and allergy requirements will be safely catered for.

Menu\_21\_202407

# SPRING/SUMMER 2025 MENU



## WEEK 3

W/C: 05/05/2025, 02/06/2025, 23/06/2025, 14/07/2025, 01/09/2025,  
22/09/2025, 13/10/2025

		MONDAY	TUESDAY	WEDNESDAY	THURSDAY	FRIDAY
HOT DISHES	OPTION 1	Cheese and Tomato Pizza Served with Wholewheat Pasta	Sausage Hot Dog Served with Potato Wedges	Roast Chicken Served with Roast Potatoes and Gravy	Oat Crusted Chicken Served with Wholegrain Rice	Fish Fingers Served with Chips
	OPTION 2	Chilli No Carne With Crispy Tortilla Served with Wholegrain Rice	Veggie Sausage Hot Dog Served with Potato Wedges	Roast Quorn Served with Roast Potatoes and Gravy	Meatless Shepherd's Pie Served with Gravy	Quorn Dippers Served with Chips
	OPTION 3	Tomato Pasta Fresh, Homemade Tomato Sauce with Pasta	Tomato Pasta Fresh, Homemade Tomato Sauce with Pasta	Tomato Pasta Fresh, Homemade Tomato Sauce with Pasta	Tomato Pasta Fresh, Homemade Tomato Sauce with Pasta	Tomato Pasta Fresh, Homemade Tomato Sauce with Pasta
HOT DISHES ARE SERVED WITH TWO VEGETABLES AND FRESHLY BAKED BREAD						
DELI DISHES	OPTION 4	Jacket Potato with a Choice of Toppings	Ham or Tuna Baguette	Jacket Potato with a Choice of Toppings	Ham or Tuna Baguette	Jacket Potato with a Choice of Toppings
	OPTION 5	No Baguette	Cheese Baguette	No Baguette	Cheese Baguette	No Baguette
DELI DISHES ARE SERVED WITH MIXED SALAD						
DESSERT		Flapjack	Peach and Ginger Pudding	Oatie Cookie with Fruit	Vanilla Ice Cream	Crunchy Chocolate Mousse



**AVAILABLE DAILY**  
Fresh fruit, salad, yoghurt and water



**Chartwells**  
Schools

Vegetarian 
 Vegan 
 Oily Fish 
 Wholegrain 
 Fruity! 
 Nutritionist's Choice

Our menu is subject to change. Please be assured that all notified medical diets and allergy requirements will be safely catered for.

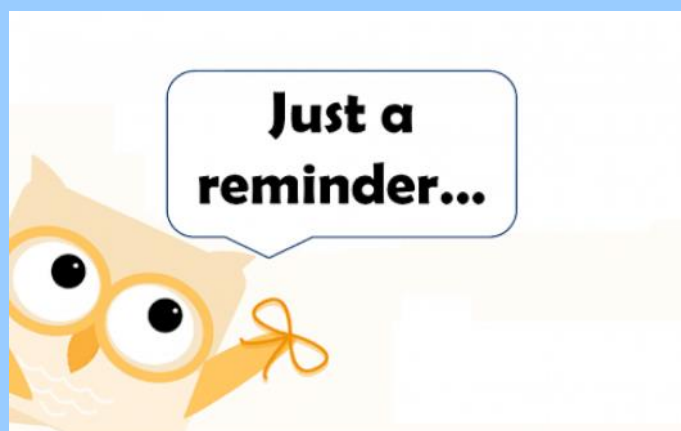
Menu\_21\_202407

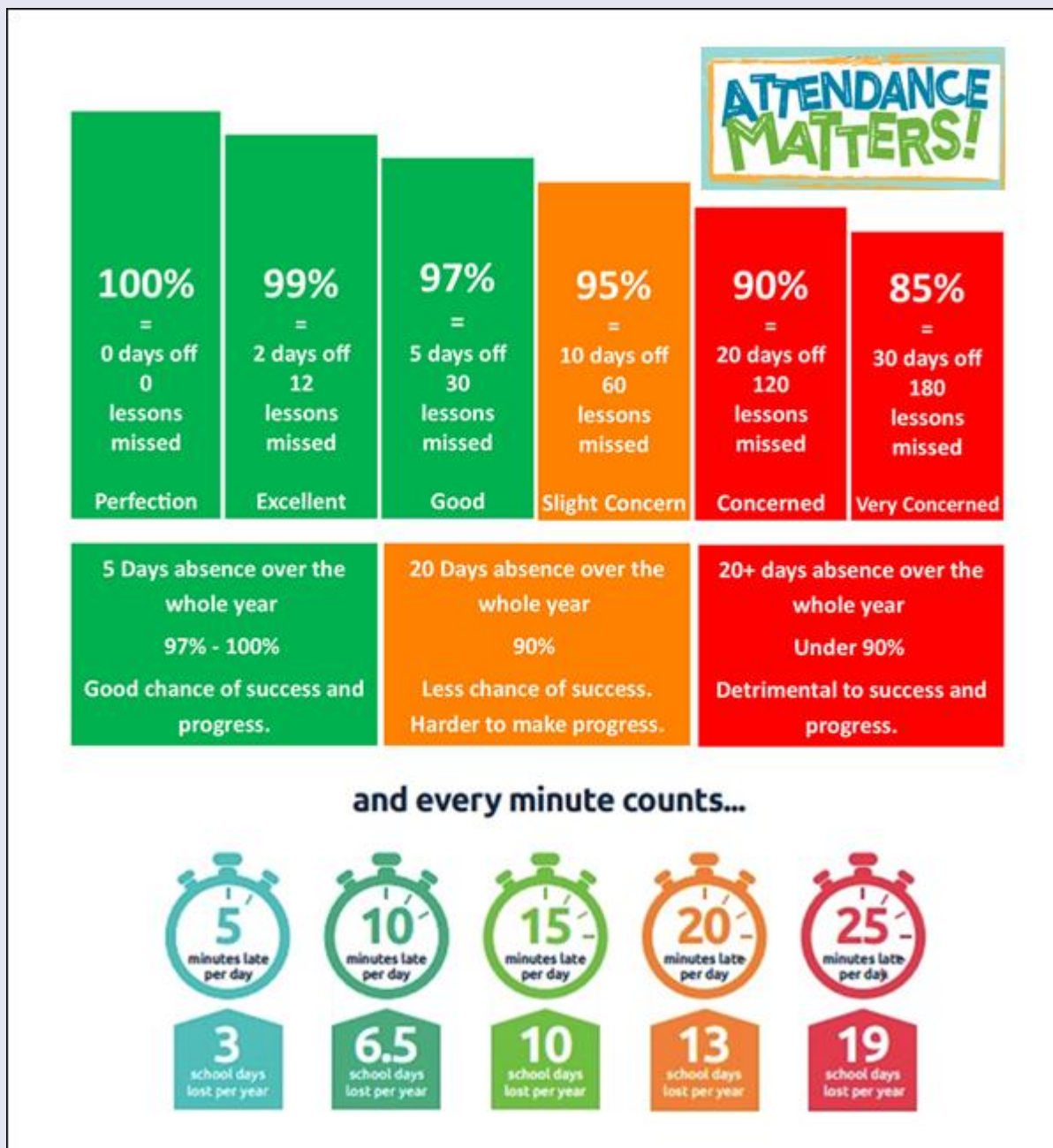


# Reminders

- PE Kit is navy blue top/jumper/hoodie with navy blue bottoms - **Branded items are not permitted**
- All hair accessories, socks, shoes and trainers must be in the school colours: navy blue, grey, black or white (no novelty socks)
- All long hair must be tied back (pony tail, bun, plaits etc...) to avoid the spreading of head lice
- No jewellery to be worn other than stud earrings, which must be removed or taped over on PE days
- Gates open at 8.25am and are locked at 8.30am, and in the afternoon, gates are opened at 2.55pm and locked at 3.10pm
- **As teachers are busy welcoming and supervising children first thing in the morning, please could all messages be given to Mrs Pelosi in the office, who will then pass them on to the teacher**
- Only **water** is allowed in drinks bottles, and snacks must be fresh fruit only

Thank you!





At Brighstone Primary School we have high expectations for our children. This begins with attendance and punctuality as they are important life skills to learn.

Good school attendance habits are best started early. Children learn from those around them and you as parents/carers set the standards and expectations for your child. Lateness has a negative impact; being late may disrupt already settled children and lessons, affect achievement and embarrass, worry or upset your child. We understand that there may be an occasional unavoidable instance where you are late, but if it happens frequently, please let us know if there may be something that we can do to help.

What to do if your child is unwell:

Check the NHS Guidance: <https://www.nhs.uk/live-well/is-my-child-too-ill-for-school/>

You should notify the school office before 9am every morning your child is unable to attend due to illness. You can either telephone on 740285 or email on [office@brighstoneprimary.org.uk](mailto:office@brighstoneprimary.org.uk). Telephone calls must be followed up in writing to authorise the (illness) absence.





## Respect Charter

### at Brighstone CE Aided Primary School

At Brighstone CE Aided Primary School we believe staff, parents and children are entitled to a safe and protective environment in which to learn and work. We strive to ensure that our school offers a warm and nurturing environment. All members of the school community and visitors should demonstrate mutual respect, to feel safe, work together and to use restorative approaches as the foundation of our practice. Any behaviour that may lead to feelings of harassment, alarm or distress to members of our community, will not be tolerated and action taken.

#### Expectations

- That all adults set a good example to children at all times, showing them how to get along with all members of the school and the wider community.
- That no one - staff, governors, parents, carers, volunteers or children - be subjected to abusive behaviour or any form of threats from visitors on the school premises.
- That physical attacks and threatening behaviour, abusive or insulting language verbal or written (including on social media), to staff, governors, parents, carers, volunteers, children and other users of the school premises will not be tolerated and may lead to a ban from school premises and/or police action.

#### Types of behaviour that are considered serious and unacceptable

This is not an exhaustive list but seeks to provide illustrations of such behaviour:

- Shouting, either in person or over the telephone
- Speaking in an aggressive/threatening tone
- Physically intimidating, e.g. standing very close
- The use of aggressive hand gestures/exaggerated movements
- Physical threats
- Shaking or holding a fist towards another person
- Swearing and name calling
- Pushing
- Slapping, punching, hitting or kicking
- Racist, homophobic or other hateful behaviour
- Sexist comments or sexual innuendo
- Disrespecting religion or belief
- Inappropriate communications (posting on Social Networking sites, emails or letters, etc.) which could bring the school into disrepute or be deemed as bullying, harassment and/or a hate-related

The school reserves the right to take any necessary actions to ensure that members of the school community are not subjected to any form of abuse in line with policy and procedure. If you choose to engage in these behaviours you may be asked to leave the site or the police may be called.

**Thank you for your understanding and support**

If your message is **urgent** or about **attendance** contact Mrs Pelosi in the **office**:  
**01983 740285**  
office@brighstoneprimary.org.uk  
Office Hours 8am - 4pm

If you would like to speak with the **Headteacher** Mrs Lennon, you can find her at the school gate every morning or you can call 740285 to make an appointment with her



For **general enquiries** you can call or email the office, text the school messaging service or send a message to our school **Facebook** page: <https://www.facebook.com/BrighstoneCEPrimarySchool>  
*Our Facebook page is open so you do not need a personal account to view it*

If you would like to contact your child's class teacher, you can email them at the following email addresses. Please allow at least one working day for a reply. For anything urgent, please contact the school office.

Year R - teacher.flowerbee@brighstoneprimary.org.uk  
Year 1/2 - teacher.bumblebee@brighstoneprimary.org.uk  
Year 3/4 - teacher.honeybee@brighstoneprimary.org.uk  
Year 5/6 - teacher.ivybee@brighstoneprimary.org.uk  
The Nest resourced provision - thenest@brighstoneprimary.org.uk

If you have concern regarding **safeguarding** or your **child's mental health and wellbeing** please contact Mrs Jones. You can speak to her on the playground every morning, call into the school office or email m.jones@brighstoneprimary.org.uk  
safeguarding@brighstoneprimary.org.uk

Our **Newsletter** is published every Friday with key information for parents and carers. You can find it on our school website: <https://www.brighstoneprimary.org.uk/category/the-buzz/>

## Contact us



If you have a **safeguarding** concern about a child outside of school hours you can call the police on 999 if you feel they are at risk of immediate harm or contact Children's Services on 0300 300 0117

Please be reminded that all children need to wear the correct PE kit on PE days.  
The correct PE kit is also needed for sports clubs.  
Socks and hair accessories must be in the school colours.

### School Day Timings

The school day is as follows:

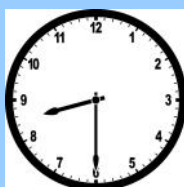
8.25am: Gates open

8.30am: School starts

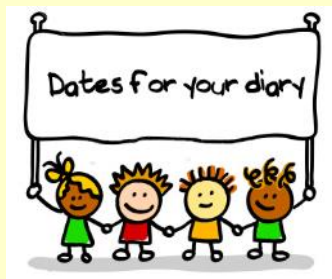
3pm: School ends

3.10pm: Gates close

Many thanks.







### School Term Dates for 2025-2026

Saturday 20th September:	Round the Island Relay Race
Thursday 25th September:	Honey Bee class walk around Brighstone village
Monday 29th September:	School photographer (individual photos)
Monday 29th September:	Parents Evening (letter to follow)
Thursday 2nd October:	Parents Evening (letter to follow)
Friday 10th October:	Go Yellow Day for Mountbatten Hospice
Wednesday 15th October:	Harvest Festival in St Mary's Church at 8.45am
Thursday 16th October:	Open afternoon for parents/carers from 2pm
Friday 17th October:	Last day of term
Monday 3rd November:	Back to school

Please note that the school will be closed on the following days in this academic year:

- Day 1: Monday 1st September 2025
- Day 2: Tuesday 2nd September 2025
- Day 3: Wednesday 3rd September 2025
- Day 4: Monday 1st June 2026
- Day 5: Monday 27th July 2026

Term dates are available on our school website: <https://www.brighstoneprimary.org.uk/calendar/>

This page is regularly updated.