

The Buzz

12th September 2025



Learning and Achieving Through
Love, Courage and Respect

Dear parents, carers and children,



The children have been busy bees this week. I love walking around to see what they are all up to, and they are always keen to show me their work. **Flower Bee class** have been busy getting to know their way around the classroom, and they have started their RWI phonics sessions. **Bumble Bee class** were keen to show me their clay models this afternoon, **Honey Bee class** have been busy learning about collective nouns, and **Ivy Bee class** were great at coming up with some PSHE rules with me the other day, to enable everyone to feel safe and comfortable when discussing different issues/topics in their PSHE lessons.

When I show prospective parents around, the feedback I always receive is "how polite/friendly/respectful the children are". The children greet visitors with a smile and a wave, and hold doors open for them. Well done and thank you to the children, who continually live and breathe our school values of **love, courage and respect**.



The drop-in session with Mitch and her colleagues from the **IOW neurodiversity team** was well-attended on Tuesday afternoon; thank you to those who came along. **The school nurse** will be offering drop-in sessions each term bookable via the school office. The next session will be on Wednesday 8th October between 9.00am – 12.00pm. If you would like to come along, please call the office to let them know. For more information, please see the email that was sent out today, and the poster is also displayed in the school reception foyer.

We will be holding an **open afternoon** for current parents/carers on Thursday 16th October from 2pm - 2.45pm. You are welcome to come along and join in with your child's learning. Please do let us know via the school office so we know how many to expect!



Parents evenings for this term are organised for Monday 29th September and Thursday 2nd October. This is an opportunity for you to meet with your child's class teacher to discuss how your child has settled in, what they are focusing on and how you can support them at home. Please keep an eye out for a letter (via email) for information about how to book your slot.

We will be celebrating **Go Yellow Day** in aid of Mountbatten Hospice on Friday 10th October. Children are invited to wear something yellow in return for a donation, and Chartwells will be serving 'yellow' meals on that day as well! (More information to follow.)



The **school photographer** will be in on Monday 29th September, for individual photos. Say cheese!



Reminders

The BSA are holding the first meeting on Monday 15th September at 7pm in school. Everyone is welcome - the more the merrier! See the flyer on p3 for more details, as well as the email that was sent.



A reminder that our **apples** are ready to be harvested, so please do take as many as you would like, to save them going to waste. There are also lots of crab apples at the front of the school; please do take some if you fancy making crab apple jelly!



I hope you have a lovely weekend.

With very best wishes,
Mrs Lennon and the Brighstone team

Collective Worship

This week, our focus is Jesus: 'I am the light of the world'. This week's value is: Joy



I am the light of the world.
Whoever follows me will not walk
in darkness but will have the light
of life.



John 8.12

We talked about how we can be lights in the world, and bring light and joy to those around us. What could we do? What could we say? What will you be proud of?

It could be something as little as holding a door open for someone, or smiling at someone, or helping them with something.

Lord Jesus Christ
This is our school, let your light shine here.
Let the rooms be full of joy.
Let love be all around –
love for one another; love for all people; and love for you.
Let us remember that, as many hands build a house,
so many hearts build a school.
Amen



Inclusion

Welcome to our new inclusion section! Each week, we will be sharing a Makaton sign and Widgit symbol, to help with our inclusive ethos.

This week, our word is:

school

<https://www.youtube.com/watch?v=IgiFwQQAzRA>

Makaton sign



Widgit symbol



Poetry Corner

To a Red Kite

Fling
yourself
upon the sky.

Take the string
you need.
Ride high

high
above the park.
Tug and buck
and lark
with the wind.

Touch a cloud,
red kite.
Follow the wild geese
in their flight.

Lilian Moore



Reading Recommendations

Each week, we include a book recommendation from a child and/or adult.

This week, Henry recommends Skandar and the Spirit War by A.F. Steadman.

Skandar are thrilling books of wild adventure, with elemental magic bound in its pages. There are five books: Skandar and the Unicorn Thief; Skandar and the Phantom Rider, Skandar and the Chaos Trials, Skandar and the Skeleton Curse, and the latest book, the Spirit War, came out at the end of August.

At the end of each chapter, it seems to leave you on a cliffhanger so you want to read more of every book.

You can get paperback and hardback versions of Skandar at Waterstones: a paperback version for £7.99 and a hardback for £13.99.

The main characters of these series are Skandar, Mitchell, Bobby and Flo and they right wrongs that someone else did.



Safeguarding

If you have a concern about a child you can call the police on 999 if you feel they are at risk of immediate harm

You can contact the NSPCC:

Contact the NSPCC Helpline

If you have any concerns at all about a child's safety or wellbeing, don't hesitate to contact us.

Call us or email help@nspcc.org.uk

0808 800 5000

Find out more

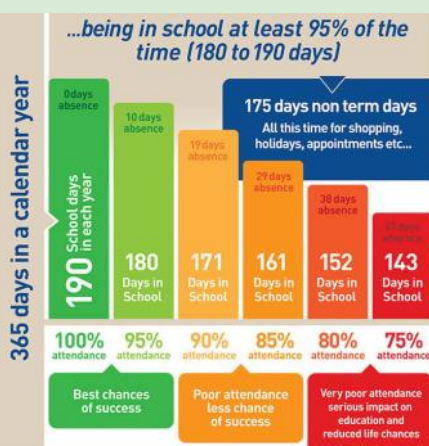
Or call children's services 01983 823435

Attendance Matters!

Week Commencing 8th September
(Whole school attendance target: 96.5%)

Actual Attendance: **95.58%**

Late marks this week: **3**



<https://www.nhs.uk/live-well/is-my-child-too-ill-for-school/>

Golden Book

Flower Bee	Ada-Olive, Arthur, Bodhi and Cleo for a brilliant and very busy start to school.
Bumble Bee	Henrietta for helping other children and her new teacher when needed. Ralph for having such a kind heart and ensuring to include others when he can see they're feeling left out or sad. Ilia for a great start in our school and for settling in so well.
Honey Bee	Shai for a courageous start to a new school and to Year 3, and super contributions to class discussions. Noah for an excellent start to a new school - contributing to class discussions and showing a great attitude to his learning.
Ivy Bee	Zara for the effort she has put into all her Maths learning this week. Myles for the effort he put into completing a wide range of maths worksheets about Roman Numerals.
Bee-Haviour	Elsie-Jayne for showing beautiful learning behaviours and listening skills this week.
Sports Bee	Edmund for having a great attitude to learning, trying his best in PE and being a role model for his class.





★ **BRIGHSTONE SCHOOL ASSOCIATION** ★



BSA



★ **MEETING** ★

15 SEPTEMBER 2025

7:00 PM at Brighstone Primary School

★ **TOPICS OF DISCUSSION**

Upcoming events e.g Round the Island Relay Race,
Volunteer Opportunities, End of term Disco, Pumpkin
competition etc

★ **EVERYONE IS WELCOME!** ★

Parents, teachers, staff, grandparents & community members
come join the fun and stay informed!



Questions? Contact us at at
brighstoneschoolassoc@gmail.com





BSA Astra Recycling Clothing Bank

We take...

Clothes,
Shoes,
Bed Linen,
Accessories
(Such as
belts, hats
& handbags)
Soft Toys



We can't take...

Duvets or
Cushions,
Off Cuts,
Carpet or
Curtains

Located in school entrance car park

*Parents,
Family members
& friends of Brighstone
Primary School*

**Does your place of
work offer the Match
Funding Scheme?**

Get in touch with us if your employers could
help our BSA fundraisers via email at
brighstoneschoolassoc@gmail.com



The Brighstone School Association now
receive 30% commission from Stikins every
time you buy your new name labels.

Quote our number 2721 when you place an order.
A great way to keep your child's belongings safe and
to support the school!

<https://www.stikins.co.uk>

Like Our Pages!



Facebook & Instagram

**Search for
Brighstone School
Association**

**It's never too late to keep
up with our latest news!**

BRIGHSTONE vs NINE ACRES



**ROUND ISLAND
RELAY RACE**
SATURDAY 20 SEPTEMBER 2025

BRIGHSTONE vs NINE ACRES

Join the Relay – We Need You!

We're looking for enthusiastic volunteers to run a leg of the Round Island Relay Race!

You don't need to be a seasoned athlete – this is about community, teamwork, and taking part, not personal bests.

Each runner will cover a distance of 3-6 miles as we relay our way around the Isle of Wight from dawn to dusk. To make it happen, we need around 20 runners to step up and help us complete the full loop to raise money for the Brighstone School Association.

**Ready to run a leg for the team?
Contact Caroline on 07710 297920**

**ROUND ISLAND
RELAY RACE**
SATURDAY 20 SEPTEMBER 2025



Plea for donations of plants!



At Brighstone, we have been developing our classrooms into calmer, more neutral 'therapeutic classrooms'. A **huge thank you** to everyone who has donated neutral cushions, table lamps and plants. It has really helped to make a difference across the school.

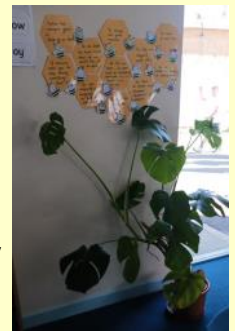


"Therapeutic classrooms are a new approach that redefines the traditional classroom set up. The average UK classroom is bright, cluttered, overwhelming and outdated, and is not designed around the needs of our children today."

Children deserve to feel comfortable, safe and inspired, especially when we know there has been a rise in the numbers of children struggling with their social, motional and mental health. Teachers up and down the country are reporting increases in school refusal, dysregulated behaviours, disengagement and low social skills. Making changes to the classroom can help."

What is a therapeutic classroom?

"Therapeutic classrooms are welcoming, safe, inviting environments that cultivate learning through their design. They calm stress hormones and increase feelings of emotional safety, whilst meeting the emotional and mental health needs of the children. Therapeutic classrooms include calm spaces and flexible seating in every room as standard, and allow children to work where they feel most comfortable. They take into consideration space, lighting, comfortability, accessibility, inclusivity and connective learning. Therapeutic classrooms are inspiring places that children want to be in and are underpinned by science. "

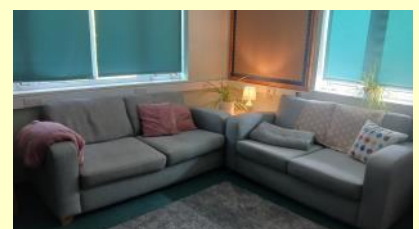


<https://www.tpctherapy.co.uk/therapeutic-classrooms/>

We have got lots of cushions, table lamps and fairy lights (thank you!), and are now looking for a few more plants. If you have any spare pot plants (fairly low maintenance) that you would like to donate, we would be very grateful!

Please contact the school office if you have anything that you would like to donate.

Thank you!



School Dinners

New Price Reminder

Children in Years 3-6 are charged at **£3.35**
per day.

Please note the dates to see which week to look at.



Every Thursday, check under your plate for a winner sticker!

1. Clear your plate
2. Check if you have a sticker
3. If you do, show a member of kitchen staff
4. Collect your prize

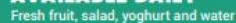


SPRING/SUMMER 2025 MENU



W/C: 21/04/2025, 12/05/2025, 09/06/2025, 30/06/2025, 21/07/2025,
08/09/2025, 29/09/2025

		MONDAY	TUESDAY	WEDNESDAY	THURSDAY	FRIDAY
HOT DISHES	OPTION 1	Cheese and Tomato Pizza Served with Wholewheat Pasta 🍕🍝	BBQ Chicken Served with Rainbow Rice 🍗🍚	Roast Pork Served with Roast Potatoes and Gravy 🍖🥔	Classic Beef Burger Served with Potato Wedges 🍔🥔	Battered Fish Served with Chips 🐟🍟
	OPTION 2	Broccoli and Leek Tart 🥦🥬	Macaroni Cheese 🍝	Butternut Squash and Tomato Bake Served with Roast Potatoes and Gravy 🍲🥔	Quorn Burger Served with Potato Wedges 🍔🥔	Veggie Fingers Served with Chips 🥕🍟
	OPTION 3	Tomato Pasta Fresh, Homemade Tomato Sauce with Pasta 🍝🍅	Tomato Pasta Fresh, Homemade Tomato Sauce with Pasta 🍝🍅	Tomato Pasta Fresh, Homemade Tomato Sauce with Pasta 🍝🍅	Tomato Pasta Fresh, Homemade Tomato Sauce with Pasta 🍝🍅	Tomato Pasta Fresh, Homemade Tomato Sauce with Pasta 🍝🍅
HOT DISHES ARE SERVED WITH TWO VEGETABLES AND FRESHLY BAKED BREAD						
DELI DISHES	OPTION 4	Jacket Potato with a Choice of Toppings 🍟🥬🥕	Ham or Tuna Baguette 🍔	Jacket Potato with a Choice of Toppings 🍟🥬🥕	Ham or Tuna Baguette 🍔	Jacket Potato with a Choice of Toppings 🍟🥬🥕
	OPTION 5	No Baguette	Cheese Baguette 🍞	No Baguette	Cheese Baguette 🍞	No Baguette
DELI DISHES ARE SERVED WITH MIXED SALAD						
DESSERT		Chocolate Brownie 🍫	Fruits of the Forest Jelly 🍮	Banoffee Pie 🥧	Strawberry Ice Cream 🍦	Ginger Biscuit with Fruit 🍪🍓



 Vegetarian
 Vegan
 Oily Fish
 Wholegrain
 Fruity!
 Nutritionist's Choice

Our menu is subject to change. Please be assured that all notified medical diets and allergy requirements will be safely catered for.

SPRING/SUMMER 2025 MENU



WEEK 2

W/C: 28/04/2025, 19/05/2025, 16/06/2025, 07/07/2025, 28/07/2025,
15/09/2025, 06/10/2025

		MONDAY	TUESDAY	WEDNESDAY	THURSDAY	FRIDAY
HOT DISHES	OPTION 1	Macaroni Cheese	BBQ Chicken Pizza Served with Potato Wedges	Roast Gammon Served with Roast Potatoes and Gravy	Beef Bolognese Served with Wholewheat Pasta	Fish Fingers Served with Chips
	OPTION 2	Veggie Meatballs in Tomato Sauce with Wholegrain Rice	Meatless Feast Cheesy Pizza Served with Potato Wedges	Sweet Potato, Chickpea and Herb Roast Served with Roast Potatoes and Gravy	Vegetable Fajita Wrap Served with Wholegrain Rice	Quorn Dippers Served with Chips
	OPTION 3	Tomato Pasta Fresh, Homemade Tomato Sauce with Pasta	Tomato Pasta Fresh, Homemade Tomato Sauce with Pasta	Tomato Pasta Fresh, Homemade Tomato Sauce with Pasta	Tomato Pasta Fresh, Homemade Tomato Sauce with Pasta	Tomato Pasta Fresh, Homemade Tomato Sauce with Pasta
HOT DISHES ARE SERVED WITH TWO VEGETABLES AND FRESHLY BAKED BREAD						
DELI DISHES	OPTION 4	Jacket Potato with a Choice of Toppings	Ham or Tuna Baguette	Jacket Potato with a Choice of Toppings	Ham or Tuna Baguette	Jacket Potato with a Choice of Toppings
	OPTION 5	No Baguette	Cheese Baguette	No Baguette	Cheese Baguette	No Baguette
DELI DISHES ARE SERVED WITH MIXED SALAD						
DESSERT		Apple and Golden Syrup Cake	Strawberry Jelly	Flapjack with Fruit	Chocolate Ice Cream	Lemon Cake



AVAILABLE DAILY

Fresh fruit, salad, yoghurt and water



Chartwells
Schools

Vegetarian
 Vegan
 Oily Fish
 Wholegrain
 Fruity!
 Nutritionist's Choice

Our menu is subject to change. Please be assured that all notified medical diets and allergy requirements will be safely catered for.

Menu_21_202407

SPRING/SUMMER 2025 MENU



WEEK 3

W/C: 05/05/2025, 02/06/2025, 23/06/2025, 14/07/2025, 01/09/2025,
22/09/2025, 13/10/2025

		MONDAY	TUESDAY	WEDNESDAY	THURSDAY	FRIDAY
HOT DISHES	OPTION 1	Cheese and Tomato Pizza Served with Wholewheat Pasta	Sausage Hot Dog Served with Potato Wedges	Roast Chicken Served with Roast Potatoes and Gravy	Oat Crusted Chicken Served with Wholegrain Rice	Fish Fingers Served with Chips
	OPTION 2	Chilli No Carne With Crispy Tortilla Served with Wholegrain Rice	Veggie Sausage Hot Dog Served with Potato Wedges	Roast Quorn Served with Roast Potatoes and Gravy	Meatless Shepherd's Pie Served with Gravy	Quorn Dippers Served with Chips
	OPTION 3	Tomato Pasta Fresh, Homemade Tomato Sauce with Pasta	Tomato Pasta Fresh, Homemade Tomato Sauce with Pasta	Tomato Pasta Fresh, Homemade Tomato Sauce with Pasta	Tomato Pasta Fresh, Homemade Tomato Sauce with Pasta	Tomato Pasta Fresh, Homemade Tomato Sauce with Pasta
HOT DISHES ARE SERVED WITH TWO VEGETABLES AND FRESHLY BAKED BREAD						
DELI DISHES	OPTION 4	Jacket Potato with a Choice of Toppings	Ham or Tuna Baguette	Jacket Potato with a Choice of Toppings	Ham or Tuna Baguette	Jacket Potato with a Choice of Toppings
	OPTION 5	No Baguette	Cheese Baguette	No Baguette	Cheese Baguette	No Baguette
DELI DISHES ARE SERVED WITH MIXED SALAD						
DESSERT		Flapjack	Peach and Ginger Pudding	Oatie Cookie with Fruit	Vanilla Ice Cream	Crunchy Chocolate Mousse



AVAILABLE DAILY

Fresh fruit, salad, yoghurt and water



Chartwells
Schools

Vegetarian
 Vegan
 Oily Fish
 Wholegrain
 Fruity!
 Nutritionist's Choice

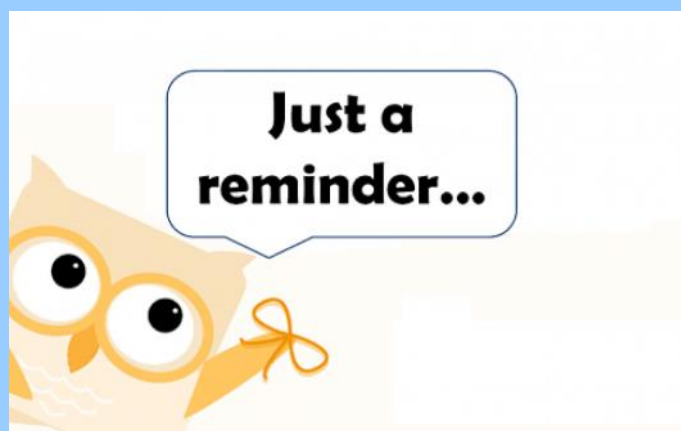
Our menu is subject to change. Please be assured that all notified medical diets and allergy requirements will be safely catered for.

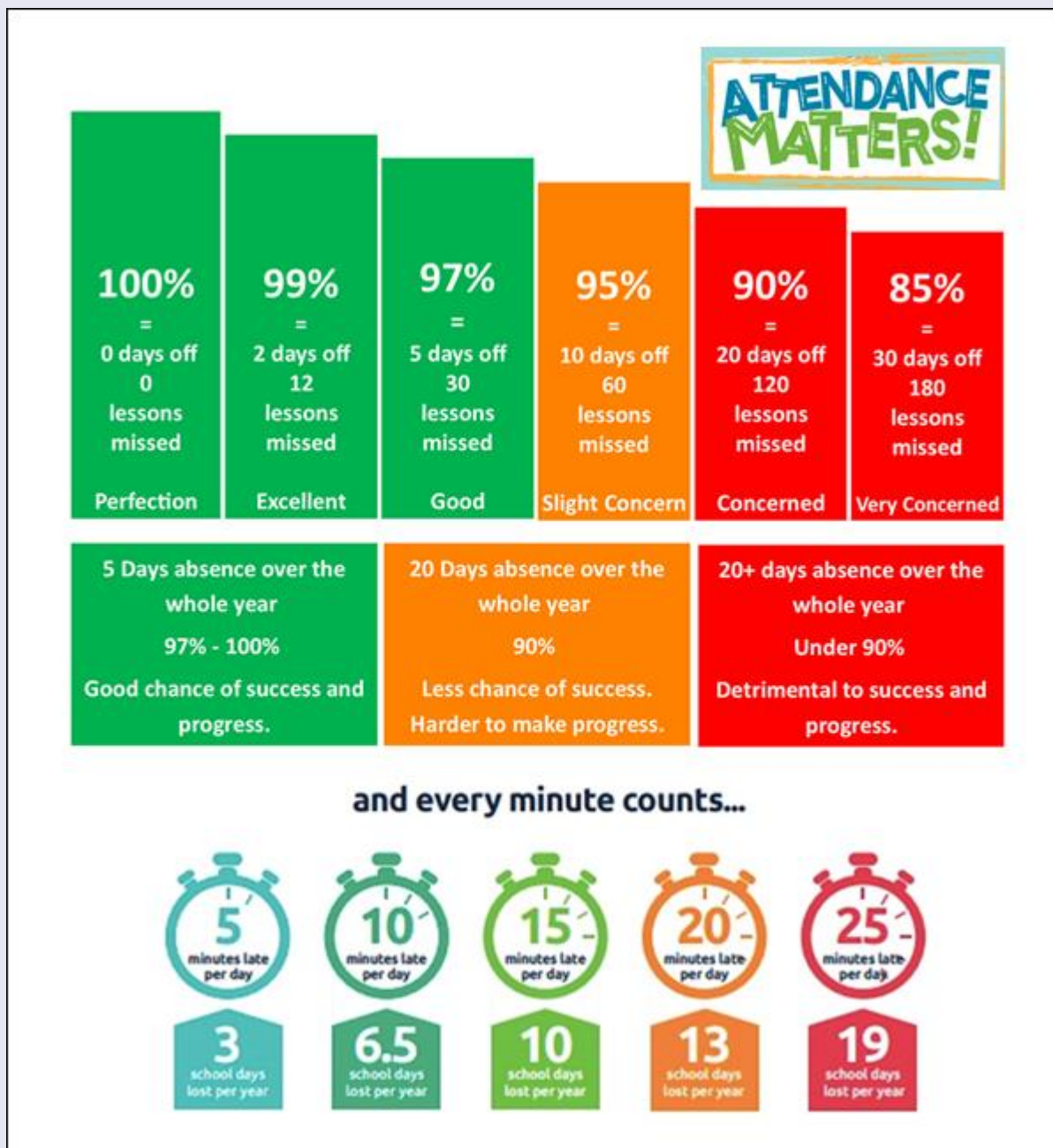
Menu_21_202407

Reminders

- PE Kit is navy blue top/jumper/hoodie with navy blue bottoms - **Branded items are not permitted**
- All hair accessories, socks, shoes and trainers must be in the school colours: navy blue, grey, black or white (no novelty socks)
- All long hair must be tied back (pony tail, bun, plaits etc...) to avoid the spreading of head lice
- No jewellery to be worn other than stud earrings, which must be removed or taped over on PE days
- Gates open at 8.25am and are locked at 8.30am, and in the afternoon, gates are opened at 2.55pm and locked at 3.10pm
- **As teachers are busy welcoming and supervising children first thing in the morning, please could all messages be given to Mrs Pelosi in the office, who will then pass them on to the teacher**
- Only **water** is allowed in drinks bottles, and snacks must be fresh fruit only

Thank you!





At Brighstone Primary School we have high expectations for our children. This begins with attendance and punctuality as they are important life skills to learn.

Good school attendance habits are best started early. Children learn from those around them and you as parents/carers set the standards and expectations for your child. Lateness has a negative impact; being late may disrupt already settled children and lessons, affect achievement and embarrass, worry or upset your child. We understand that there may be an occasional unavoidable instance where you are late, but if it happens frequently, please let us know if there may be something that we can do to help.

What to do if your child is unwell:

Check the NHS Guidance: <https://www.nhs.uk/live-well/is-my-child-too-ill-for-school/>

You should notify the school office before 9am every morning your child is unable to attend due to illness. You can either telephone on 740285 or email on office@brighstoneprimary.org.uk. Telephone calls must be followed up in writing to authorise the (illness) absence.

Respect Charter

at Brighstone CE Aided Primary School

At Brighstone CE Aided Primary School we believe staff, parents and children are entitled to a safe and protective environment in which to learn and work. We strive to ensure that our school offers a warm and nurturing environment. All members of the school community and visitors should demonstrate mutual respect, to feel safe, work together and to use restorative approaches as the foundation of our practice. Any behaviour that may lead to feelings of harassment, alarm or distress to members of our community, will not be tolerated and action taken.

Expectations

- That all adults set a good example to children at all times, showing them how to get along with all members of the school and the wider community.
- That no one - staff, governors, parents, carers, volunteers or children - be subjected to abusive behaviour or any form of threats from visitors on the school premises.
- That physical attacks and threatening behaviour, abusive or insulting language verbal or written (including on social media), to staff, governors, parents, carers, volunteers, children and other users of the school premises will not be tolerated and may lead to a ban from school premises and/or police action.

Types of behaviour that are considered serious and unacceptable

This is not an exhaustive list but seeks to provide illustrations of such behaviour:

- Shouting, either in person or over the telephone
- Speaking in an aggressive/threatening tone
- Physically intimidating, e.g. standing very close
- The use of aggressive hand gestures/exaggerated movements
- Physical threats
- Shaking or holding a fist towards another person
- Swearing and name calling
- Pushing
- Slapping, punching, hitting or kicking
- Racist, homophobic or other hateful behaviour
- Sexist comments or sexual innuendo
- Disrespecting religion or belief
- Inappropriate communications (posting on Social Networking sites, emails or letters, etc.) which could bring the school into disrepute or be deemed as bullying, harassment and/or a hate-related

The school reserves the right to take any necessary actions to ensure that members of the school community are not subjected to any form of abuse in line with policy and procedure. If you choose to engage in these behaviours you may be asked to leave the site or the police may be called.

Thank you for your understanding and support

If your message is **urgent** or about **attendance** contact Mrs Pelosi in the **office**:
01983 740285
office@brighstoneprimary.org.uk
Office Hours 8am - 4pm

If you would like to speak with the **Headteacher** Mrs Lennon, you can find her at the school gate every morning or you can call 740285 to make an appointment with her



For **general enquiries** you can call or email the office, text the school messaging service or send a message to our school **Facebook** page: <https://www.facebook.com/BrighstoneCEPrimarySchool>
Our Facebook page is open so you do not need a personal account to view it

If you would like to contact your child's class teacher, you can email them at the following email addresses. Please allow at least one working day for a reply. For anything urgent, please contact the school office.

Year R - teacher.flowerbee@brighstoneprimary.org.uk
Year 1/2 - teacher.bumblebee@brighstoneprimary.org.uk
Year 3/4 - teacher.honeybee@brighstoneprimary.org.uk
Year 5/6 - teacher.ivybee@brighstoneprimary.org.uk
The Nest resourced provision - thenest@brighstoneprimary.org.uk

If you have concern regarding **safeguarding** or your **child's mental health and wellbeing** please contact Mrs Jones. You can speak to her on the playground every morning, call into the school office or email m.jones@brighstoneprimary.org.uk
safeguarding@brighstoneprimary.org.uk

Our **Newsletter** is published every Friday with key information for parents and carers. You can find it on our school website: <https://www.brighstoneprimary.org.uk/category/the-buzz/>

Contact us



If you have a **safeguarding** concern about a child outside of school hours you can call the police on 999 if you feel they are at risk of immediate harm or contact Children's Services on 0300 300 0117

Please be reminded that all children need to wear the correct PE kit on PE days.
The correct PE kit is also needed for sports clubs.
Socks and hair accessories must be in the school colours.

School Day Timings

The school day is as follows:

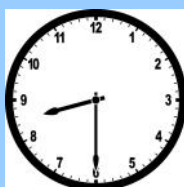
8.25am: Gates open

8.30am: School starts

3pm: School ends

3.10pm: Gates close

Many thanks.





School Term Dates for 2025-2026

Monday 15th September:	BSA meeting at 7pm
Saturday 20th September:	Round the Island Relay Race
Monday 29th September:	School photographer (individual photos)
Monday 29th September:	Parents Evening (letter to follow)
Thursday 2nd October:	Parents Evening (letter to follow)
Friday 10th October:	Go Yellow Day for Mountbatten Hospice
Wednesday 15th October:	Harvest Festival in St Mary's Church at 8.45am
Thursday 16th October:	Open afternoon for parents/carers
Friday 17th October:	Last day of term
Monday 3rd November:	Back to school

Please note that the school will be closed on the following days in this academic year:

- Day 1: Monday 1st September 2025
- Day 2: Tuesday 2nd September 2025
- Day 3: Wednesday 3rd September 2025
- Day 4: Monday 1st June 2026
- Day 5: Monday 27th July 2026

Term dates are available on our school website: <https://www.brighstoneprimary.org.uk/calendar/>

This page is regularly updated.