

The Buzz

4th July 2025



Learning and Achieving Through
Love, Courage and Respect

Dear parents, carers and children,

We have had another busy week! Some of our Y6 children have been taking part in Bikeability sessions, learning how to cycle safely. These sessions will continue over the coming weeks.



On Tuesday, some of our school musicians went to Medina Theatre to see a concert performed by six members of the **London Sinfonietta Orchestra**. They played a range of modern pieces and the conductor explained the inspiration behind each piece and how the music told or described those ideas. He explained how anyone can do this, as two of the pieces were inspired by children on the island and one piece was written by the Master of The King's Music, Errollyn Wallen. It was a fabulous opportunity for our children to see where all the hard work of their music lessons could ultimately lead to, and has hopefully inspired them to have a go at composing as well as playing.



Our **Mardi Gras** club has been busy making wonderful costumes over the past few weeks, in preparation for the Mardi Gras carnival tomorrow. They have been working in collaboration with Di from Brighstone Christmas Tree festival, as the Mardi Gras theme is Folkstastic, celebrating the island's folklore and traditions. During this morning's Golden Worship, the showed off their fantastic creations. They have worked so hard, and I hope that you can join them tomorrow in Ryde to cheer them on as they parade through the town! Thank you to Mrs Green and Di for leading this club.



Yesterday saw the whole school taking part in another Hive Day, with the focus on **TriWonder**, a Diocesan project. This was to celebrate, and to be awestruck by, and to wonder about, God's wonderful world: the 'tri' being the sea, the land and the sky. We were awestruck by a kite gliding through the sky with its wings outstretched, we wondered how many blades of grass there are in the world, we were awed by the different sizes and shapes of leaves, and we wondered how the sea was made. Among different activities, the children made Memory Catchers, onto which they stuck interesting natural items that they found around the school field, they generated lots of 'I wonder...' questions, they made ephemeral art gardens using natural found items, and created starscapes. They wrote star wishes and hung them on trees, before blowing bubbles with their thanks to God, and to the world.



Today, a group of children took part in the **PEACH games**. They had a fantastic time! More info to follow in next week's Buzz.



Are you passionate about supporting children's learning and experiences beyond the classroom? We're looking to build a bank of reliable, enthusiastic **volunteers** who can help out on an ad hoc basis with school trips and sports fixtures throughout the year. Whether it's accompanying a class on a museum visit, helping supervise a sports fixture, or assisting staff on a local outing, your time and support can make a big difference. This plea is open to parents/carers and members of the local community. Please see our Facebook post for further information.

Today, you will have received a letter about **next year's classes and staffing arrangements**. We are delighted to welcome back Miss Sztypuljak to the Brighstone team. We are also in the process of recruiting for a Y3/4 teacher (until Mrs Baker returns from maternity leave), as Mrs Aram will be the lead teacher in our new Resourced Provision from September. Please see the letter for more information.

On Tuesday morning, the children will take part in **Transition Day**, during which they will meet their new teacher (or current teacher) and get to know each other as part of their new class. Our Y6 children will be visiting their new secondary schools. We hope they have fun!

We hope you have a wonderful weekend. Good luck to our Mardi Gras children and adults!

With best wishes, Mrs Lennon and the Brighstone team

Collective Worship

This week, we been focusing on Respect: Valuing others as we would like to be valued

We looked at this mosaic, called The Golden Rule, which was presented to the United Nations in 1985. It depicts a wonderful mix of people from different nations standing together with the words 'Do unto others as you would have them do unto you'. Matthew 7.12



Sometimes following The Golden Rule means that we need to make difficult choices between doing what would most please ourselves, and respecting and serving others. Some of our children acted out scenarios, and we discussed what they should do. Should they do something that would please themselves, or make a little sacrifice for others?

Prayer of St Francis of Assisi

Lord, make me an instrument of your peace;
Where there is hatred, let me sow love;
Where there is injury, pardon;
Where there is doubt, faith;
Where there is despair, hope;
Where there is darkness, light;
Where there is sadness, joy.
O divine Master, grant that I may not
so much seek to be consoled as to console;
To be understood, as to understand;
To be loved, as to love;
For it is in giving that we receive,
It is in pardoning that we are pardoned,
And it is in dying that we are born to Eternal Life.



School Dinners

Children in **Year R, 1 and 2** are entitled to a 'universal' **free** school meal everyday.

Children in Years 3-6 are charged at **£3.20** per day. Yoghurt, fruit, salad and jacket potatoes are available every day.

Baguettes available on Tuesdays and Thursday - Ham, Cheese or Tuna

The school dinner menus can now be found on pp7-8 in the Buzz, and they are always available on our website.

Poetry Corner

Inside a shell

Inside a shell
There is the whisper of a wave.
Inside a feather
There is the breath of a breeze.
Inside an ember
There is the memory of a flame.
Inside a rock
There is the murmur of a mountain.
Inside a well
There is the echo of a wish.
Inside a seed
There is the promise of a flower.

John Foster



Reading Recommendations

Each week, we include a book recommendation from a child and/or adult.

This week, William recommends Big Nate Flips Out by Jeff Kinney

I recommend this book because it's by the same author as Diary of a Wimpy Kid. It's a comic book and I really like comic books, so that's why I chose this book to read and recommend.

His name is Big Nate and he's quite silly so he normally falls over a lot of times and trips over his shoe laces. It's funny and good because it's a nice long book which I like to read. I like to read long books!



Safeguarding

If you have a concern about a child you can call the police on 999 if you feel they are at risk of immediate harm

You can contact the NSPCC:

Contact the NSPCC Helpline

If you have any concerns at all about a child's safety or wellbeing, don't hesitate to contact us.

Call us or email help@nspcc.org.uk

0808 800 5000

Find out more

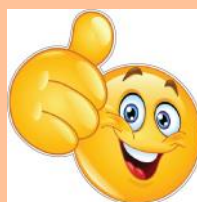
Or call children's services 0300 300 0117

Attendance Matters!

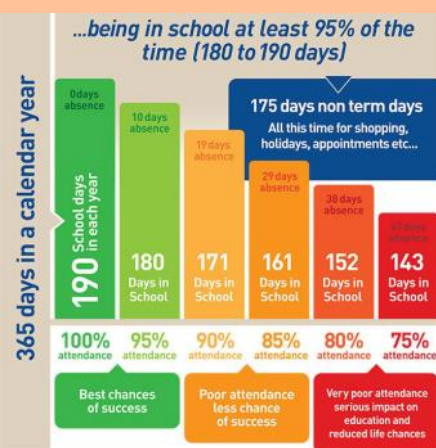
Week Commencing 30th June
(Whole school attendance target: 96.5%)

Actual Attendance: **95.98%**

Late marks this week: 14



<https://www.nhs.uk/>



live-well/is-my-child-too-ill-for-school/

Plea for donations of: Table lamps, fairy lights, cushions and plants!

At Brighstone, we would like to develop our classrooms into calmer, more neutral 'therapeutic classrooms'.

"Therapeutic classrooms are a new approach that redefines the traditional classroom set up. The average UK classroom is bright, cluttered, overwhelming and outdated, and is not designed around the needs of our children today."

Children deserve to feel comfortable, safe and inspired, especially when we know there has been a rise in the numbers of children struggling with their social, emotional and mental health. Teachers up and down the country are reporting increases in school refusal, dysregulated behaviours, disengagement and low social skills. Making changes to the classroom can help."

What is a therapeutic classroom?

"Therapeutic classrooms are welcoming, safe, inviting environments that cultivate learning through their design. They calm stress hormones and increase feelings of emotional safety, whilst meeting the emotional and mental health needs of the children. Therapeutic classrooms include calm spaces and flexible seating in every room as standard, and allow children to work where they feel most comfortable."

They take into consideration space, lighting, comfortability, accessibility, inclusivity and connective learning. Therapeutic classrooms are inspiring places that children want to be in and are underpinned by science. "

<https://www.tpctherapy.co.uk/therapeutic-classrooms/>

To start this process, we are looking to introduce **table lamps** and **fairy lights** (so we can turn off or reduce the use of the bright overhead lighting), **cushions** (to make comfy seating areas) and **plants**.

As budget is tight, we are wondering if you have, or know of anyone who has, any spare table lamps, cushions, fairy lights and plants that you no longer need. To minimise the use of bright colours, ideally these new furnishings need to be in neutral colours.

Please contact the school office if you have anything that you would like to donate.

Thank you!





Brighstone School Association

Join us for our

SUMMER SIZZLER

Friday,
11th July

School
Field

17:00 to 19:00

£5 ENTRY PER FAMILY
-PAY AT THE GATE
(CARD OR CASH ACCEPTED)

Events

Foam Party, BBQ Hot Dogs, Live Music,
Children's Races, Ice Cream van

For more information

www.facebook.com/brighstoneschoolassociation.com

Made with PosterMyWall.com



BSA ASTRA RECYCLING BIN

We take...

Clothes
Shoes
Bed Linen
Accessories
(Such as belts, hats & handbags)
Soft Toys

We can't take...

Duvets or Cushions
Off Cuts
Carpet or Curtains



Find our recycling bin at the front entrance of the school.

*Parents,
Family members
& friends of Brighstone
Primary School*

**Does your place of
work offer the Match
Funding Scheme?**

Get in touch with us if your employers could
help our BSA fundraisers via email at
brighstoneschoolassoc@gmail.com

BRIGHSTONE CE PRIMARY SCHOOL
GOVERNORS PRESENT

SUMMER SHINDIG

THURSDAY 24TH JULY

7PM | SCHOOL FIELD
TO | WARNES LANE
10:30PM | BRIGHSTONE

JOIN US FOR AN EVENING OF LIVE MUSIC,
DANCING AND GREAT FOOD.

RAISING FUNDS FOR
BRIGHSTONE CE PRIMARY SCHOOL

TICKETS AVAILABLE FROM
THE BRIGHSTONE VILLAGE
SHOP AND THE SCHOOL
OFFICE (CASH ONLY)



TO PAY BY CARD
SCAN THE
QR CODE.

ADULT TICKETS £10 | TEEN TICKETS £5
(UNDER 12S GO FREE)

ALL UNDER 18S MUST BE ACCOMPANIED BY AN ADULT

IF YOU HAVE ANY PROBLEMS BOOKING PLEASE CONTACT EMILY
ON E.RUFIAN@BRIGHSTONEPRIMARY.ORG.UK

[HTTPS://BRIGHSTONE-CE-PRIMARY-SCHOOL-GOVERNORS-PRESENT.SQUARE.SITE/](https://brighstone-ce-primary-school-governors-present.square.site/)

SPRING/SUMMER 2025 MENU

WEEK 2

W/C: 28/04/2025, 19/05/2025, 16/06/2025, 07/07/2025, 28/07/2025,
15/09/2025, 06/10/2025

		MONDAY	TUESDAY	WEDNESDAY	THURSDAY	FRIDAY
HOT DISHES	OPTION 1	Macaroni Cheese	BBQ Chicken Pizza Served with Potato Wedges	Roast Gammon Served with Roast Potatoes and Gravy	Beef Bolognese Served with Wholewheat Pasta	Fish Fingers Served with Chips
	OPTION 2	Veggie Meatballs in Tomato Sauce with Wholegrain Rice	Meatless Feast Cheesy Pizza Served with Potato Wedges	Sweet Potato, Chickpea and Herb Roast Served with Roast Potatoes and Gravy	Vegetable Fajita Wrap Served with Wholegrain Rice	Quorn Dippers Served with Chips
	OPTION 3	Tomato Pasta Fresh, Homemade Tomato Sauce with Pasta	Tomato Pasta Fresh, Homemade Tomato Sauce with Pasta	Tomato Pasta Fresh, Homemade Tomato Sauce with Pasta	Tomato Pasta Fresh, Homemade Tomato Sauce with Pasta	Tomato Pasta Fresh, Homemade Tomato Sauce with Pasta
HOT DISHES ARE SERVED WITH TWO VEGETABLES AND FRESHLY BAKED BREAD						
DELI DISHES	OPTION 4	Jacket Potato with a Choice of Toppings	Ham or Tuna Baguette	Jacket Potato with a Choice of Toppings	Ham or Tuna Baguette	Jacket Potato with a Choice of Toppings
	OPTION 5	No Baguette	Cheese Baguette	No Baguette	Cheese Baguette	No Baguette
DELI DISHES ARE SERVED WITH MIXED SALAD						
DESSERT		Apple and Golden Syrup Cake	Strawberry Jelly	Flapjack with Fruit	Chocolate Ice Cream	Lemon Cake



AVAILABLE DAILY
Fresh fruit, salad, yoghurt and water



Chartwells
Schools

Vegetarian
 Vegan
 Oily Fish
 Wholegrain
 Fruity!
 Nutritionist's Choice

Our menu is subject to change. Please be assured that all notified medical diets and allergy requirements will be safely catered for.

Menu_21_202407

SPRING/SUMMER 2025 MENU

WEEK 3

W/C: 05/05/2025, 02/06/2025, 23/06/2025, 14/07/2025, 01/09/2025,
22/09/2025, 13/10/2025

		MONDAY	TUESDAY	WEDNESDAY	THURSDAY	FRIDAY
HOT DISHES	OPTION 1	Cheese and Tomato Pizza Served with Wholewheat Pasta	Sausage Hot Dog Served with Potato Wedges	Roast Chicken Served with Roast Potatoes and Gravy	Oat Crusted Chicken Served with Wholegrain Rice	Fish Fingers Served with Chips
	OPTION 2	Chilli No Carne With Crispy Tortilla Served with Wholegrain Rice	Veggie Sausage Hot Dog Served with Potato Wedges	Roast Quorn Served with Roast Potatoes and Gravy	Meatless Shepherd's Pie Served with Gravy	Quorn Dippers Served with Chips
	OPTION 3	Tomato Pasta Fresh, Homemade Tomato Sauce with Pasta	Tomato Pasta Fresh, Homemade Tomato Sauce with Pasta	Tomato Pasta Fresh, Homemade Tomato Sauce with Pasta	Tomato Pasta Fresh, Homemade Tomato Sauce with Pasta	Tomato Pasta Fresh, Homemade Tomato Sauce with Pasta
HOT DISHES ARE SERVED WITH TWO VEGETABLES AND FRESHLY BAKED BREAD						
DELI DISHES	OPTION 4	Jacket Potato with a Choice of Toppings	Ham or Tuna Baguette	Jacket Potato with a Choice of Toppings	Ham or Tuna Baguette	Jacket Potato with a Choice of Toppings
	OPTION 5	No Baguette	Cheese Baguette	No Baguette	Cheese Baguette	No Baguette
DELI DISHES ARE SERVED WITH MIXED SALAD						
DESSERT		Flapjack	Peach and Ginger Pudding	Oatie Cookie with Fruit	Vanilla Ice Cream	Crunchy Chocolate Mousse



AVAILABLE DAILY
Fresh fruit, salad, yoghurt and water



Chartwells
Schools

Vegetarian
 Vegan
 Oily Fish
 Wholegrain
 Fruity!
 Nutritionist's Choice

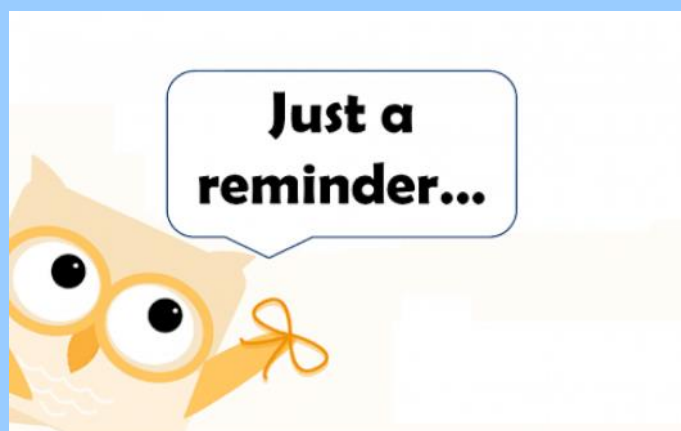
Our menu is subject to change. Please be assured that all notified medical diets and allergy requirements will be safely catered for.

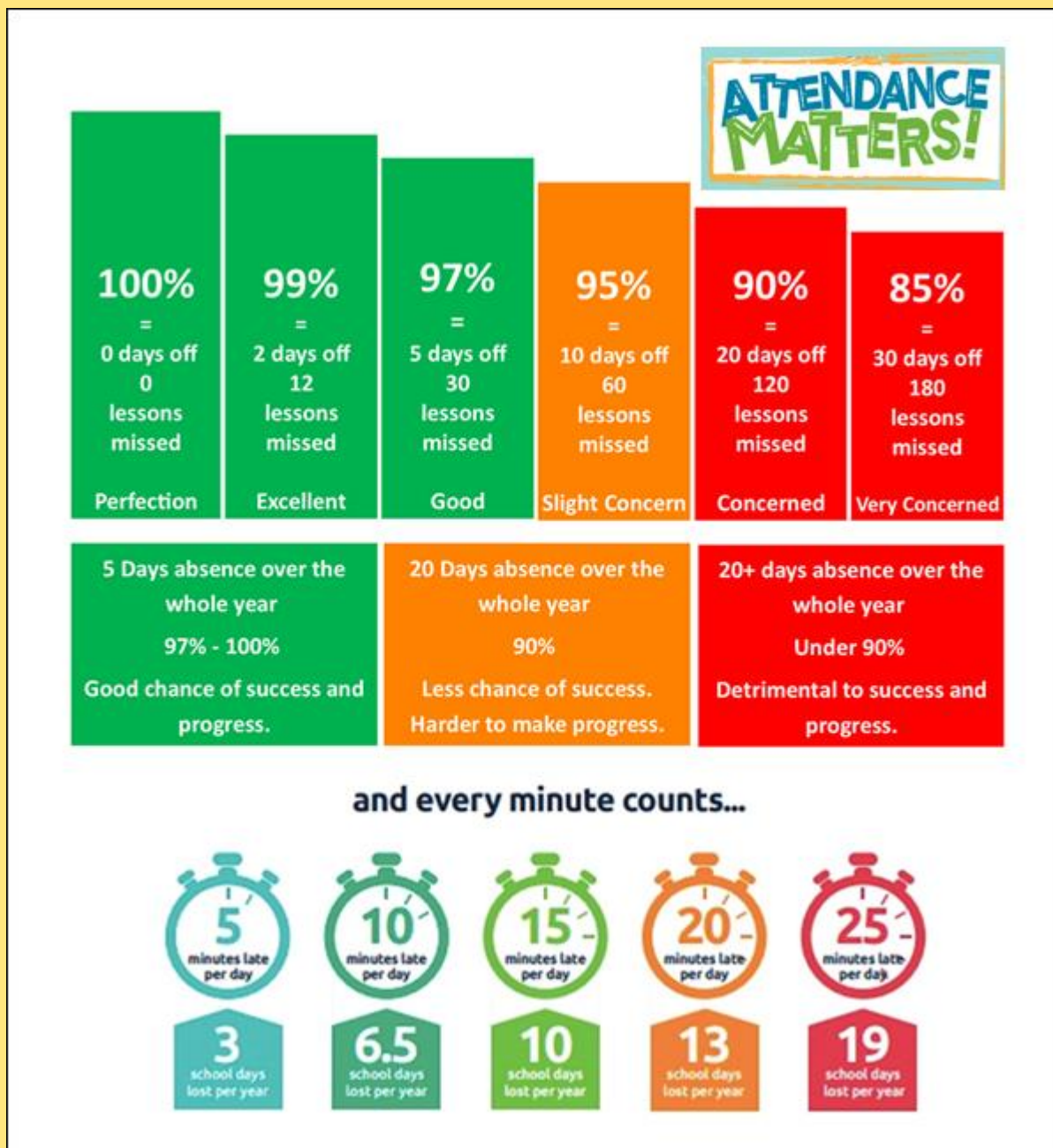
Menu_21_202407

Reminders

- PE Kit is navy blue top/jumper/hoodie with navy blue bottoms - **Branded items are not permitted**
- All hair accessories, socks, shoes and trainers must be in the school colours: navy blue, grey, black or white (no novelty socks)
- All long hair must be tied back (pony tail, bun, plaits etc...) to avoid the spreading of head lice
- No jewellery to be worn other than stud earrings, which must be removed or taped over on PE days
- Gates open at 8.25am and are locked at 8.30am, and in the afternoon, gates are opened at 2.55pm and locked at 3.10pm
- **As teachers are busy welcoming and supervising children first thing in the morning, please could all messages be given to Mrs Pelosi in the office, who will then pass them on to the teacher**
- Only **water** is allowed in drinks bottles, and snacks must be fruit only

Thank you!





At Brighstone Primary School we have high expectations for our children. This begins with attendance and punctuality as they are important life skills to learn.

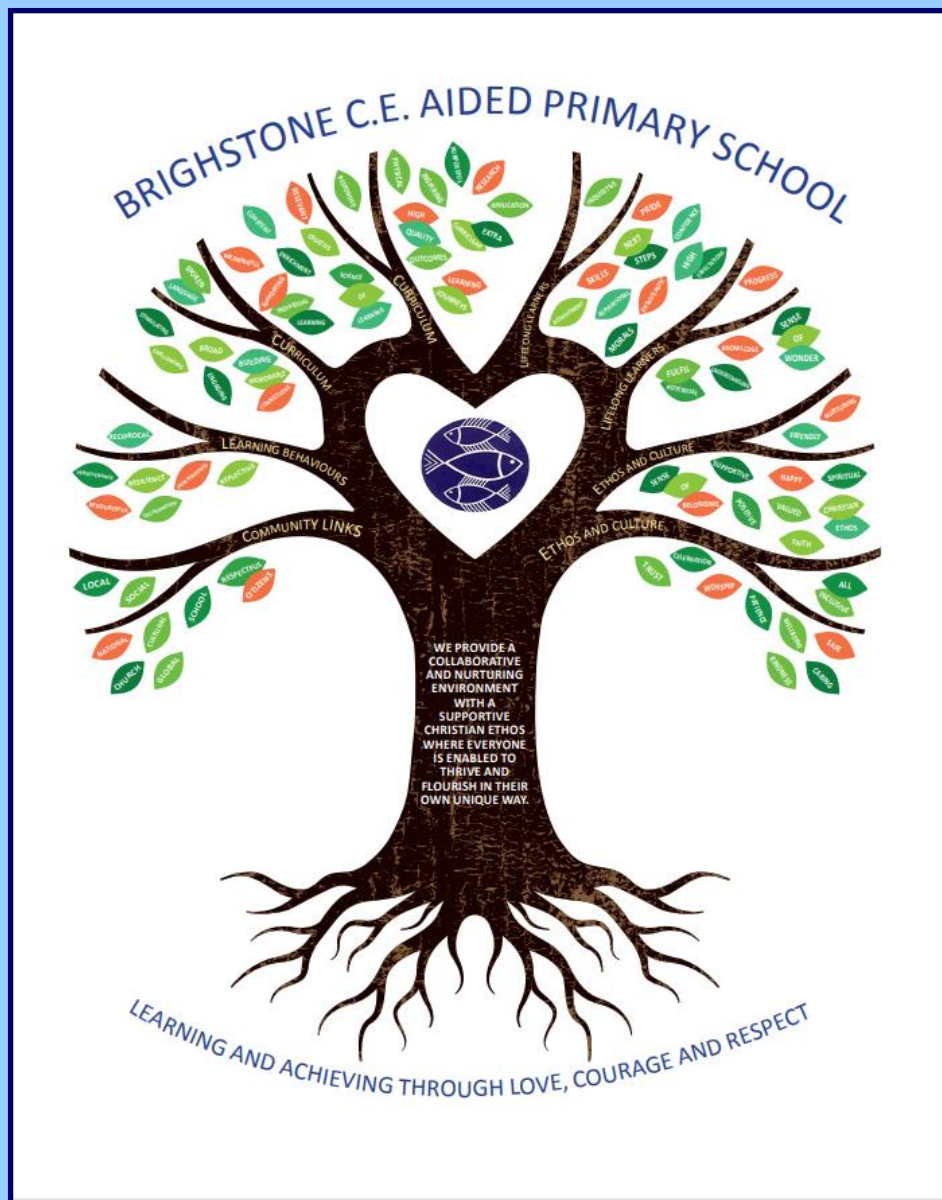
Good school attendance habits are best started early. Children learn from those around them and you as parents/carers set the standards and expectations for your child. Lateness has a negative impact; being late may disrupt already settled children and lessons, affect achievement and embarrass, worry or upset your child. We understand that there may be an occasional unavoidable instance where you are late, but if it happens frequently, please let us know if there may be something that we can do to help.

What to do if your child is unwell:

Check the NHS Guidance: <https://www.nhs.uk/live-well/is-my-child-too-ill-for-school/>

You should notify the school office before 9am every morning your child is unable to attend due to illness. You can either telephone on 740285 or email on office@brighstoneprimary.org.uk. Telephone calls must be followed up in writing to authorise the (illness) absence.

Our Vision Statement



A vision statement 'seeks to inspire and give direction to all stakeholders (staff, children, parents, governors and the wider community). It is an aspirational description of what an organisation would like to achieve or accomplish in the mid-term or long-term future. It is intended to serve as a clear guide for choosing current and future courses of action'.

Our vision statement works alongside our mission statement 'Learning and Achieving Through Love, Courage and Respect', which includes our values, to reflect and guide our culture, ethos and decision making. This is also on our website.

As a school, in 2020 we worked together with a range of stakeholders to write our vision statement, and we decided to create a visual vision statement to make it stand out and be memorable. Each part of the image has been carefully chosen to represent our school:

Our values, as part of the mission statement (tagline), are the roots and foundation that feed and nourish our school.

The vision statement is the main body (trunk) that guides all our actions.

The branches reflect the different aspects of life in our school.

The leaves show examples of how these aspects are shown.

The school logo in the centre of the tree represents the Christian ethos that is at the heart of everything we do.



Respect Charter

at Brighstone CE Aided Primary School

At Brighstone CE Aided Primary School we believe staff, parents and children are entitled to a safe and protective environment in which to learn and work. We strive to ensure that our school offers a warm and nurturing environment. All members of the school community and visitors should demonstrate mutual respect, to feel safe, work together and to use restorative approaches as the foundation of our practice. Any behaviour that may lead to feelings of harassment, alarm or distress to members of our community, will not be tolerated and action taken.

Expectations

- That all adults set a good example to children at all times, showing them how to get along with all members of the school and the wider community.
- That no one - staff, governors, parents, carers, volunteers or children - be subjected to abusive behaviour or any form of threats from visitors on the school premises.
- That physical attacks and threatening behaviour, abusive or insulting language verbal or written (including on social media), to staff, governors, parents, carers, volunteers, children and other users of the school premises will not be tolerated and may lead to a ban from school premises and/or police action.

Types of behaviour that are considered serious and unacceptable

This is not an exhaustive list but seeks to provide illustrations of such behaviour:

- Shouting, either in person or over the telephone
- Speaking in an aggressive/threatening tone
- Physically intimidating, e.g. standing very close
- The use of aggressive hand gestures/exaggerated movements
- Physical threats
- Shaking or holding a fist towards another person
- Swearing and name calling
- Pushing
- Slapping, punching, hitting or kicking
- Racist, homophobic or other hateful behaviour
- Sexist comments or sexual innuendo
- Disrespecting religion or belief
- Inappropriate communications (posting on Social Networking sites, emails or letters, etc.) which could bring the school into disrepute or be deemed as bullying, harassment and/or a hate-related

The school reserves the right to take any necessary actions to ensure that members of the school community are not subjected to any form of abuse in line with policy and procedure. If you choose to engage in these behaviours you may be asked to leave the site or the police may be called.

Thank you for your understanding and support

If your message is **urgent** or about **attendance**

contact Mrs Pelosi in the **office**:

01983 740285

office@brighstoneprimary.org.uk

Office Hours 8am - 4pm

If you would like to speak with the **Headteacher**

Mrs Lennon, you can find her at the school gate every morning or you can call 740285 to make an appointment with her



For **general enquiries** you can call or email the office, text the school messaging service or send a message to our school **Facebook** page: <https://www.facebook.com/BrighstoneCEPrimarySchool>

Our Facebook page is open so you do not need a personal account to view it

If you have concerns about your child's **learning** and progress, email the class teacher in the first instance and allow at least 1 working day for a reply:

Years R, 1 & 2 - teacher.bumblebee@brighstoneprimary.org.uk

Years 3 & 4 - teacher.honeybee@brighstoneprimary.org.uk

Years 5 & 6 - teacher.ivybee@brighstoneprimary.org.uk

If you have concern regarding **safeguarding** or your **child's mental health and wellbeing** please contact Mrs Jones. You can speak to her on the playground every morning, call into the school office or email m.jones@brighstoneprimary.org.uk
safeguarding@brighstoneprimary.org.uk

Our **Newsletter** is published every Friday with key information for parents and carers. You can find it on our school website:

<https://www.brighstoneprimary.org.uk/category/the-buzz/>

Contact us



If you have a **safeguarding** concern about a child outside of school hours you can call the police on 999 if you feel they are at risk of immediate harm or contact Children's Services on 0300 300 0117

Please be reminded that all children need to wear the correct PE kit on PE days.

The correct PE kit is also needed for sports clubs.

Socks and hair accessories must be in the school colours.

School Day Timings

The school day is as follows:

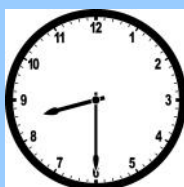
8.25am: Gates open

8.30am: School starts

3pm: School ends

3.10pm: Gates close

Many thanks.



Key dates this year

- Saturday 5th July: Mardi Gras parade in Ryde
- Tuesday 8th July: Transition Day
- Friday 11th July: Y6 Leavers' Service in Portsmouth; reports sent home; Summer Sizzler
- Tuesday 15th July: Parents evening
- Wednesday 16th - Friday 18th July: Y6 London residential
- Tuesday 22nd July: The Bee Musical whole school play (1.30pm and 6pm)
- Thursday 24th July: Whole school Forest Day (further details to follow); Summer Shindig (7pm)
- Friday 25th July: Last day of term; Y6 Leavers' Service in St Mary's Church at 1.30pm

This list is regularly updated.

School Term Dates for 2024-2025

Please note that the school will be closed on the following remaining days in this academic year:

Day 4: Monday 28th July 2025

Day 5: Tuesday 29th July 2025

Term dates are available on our school website.

School Term Dates for 2025-2026

Please note that the school will be closed on the following days in the next academic year:

Day 1: Monday 1st September 2025

Day 2: Tuesday 2nd September 2025

Day 3: Wednesday 3rd September 2025

Day 4: Monday 1st June 2026

Day 5: Monday 27th July 2026

Term dates are available on our school website.

