

The Buzz

18th July 2025



Learning and Achieving Through
Love, Courage and Respect

Dear parents, carers and children,



We have just spent a very enjoyable and fun few days in **London** with our wonderful Y6 children. We travelled up to the big city by train bright and early on Wednesday morning, where, on arrival, our first visit was to the British Museum. There, the children enjoyed looking at all the artefacts, and especially liked looking at the Arabic rooms, where they could apply their learning in History. In fact, throughout the entire trip, they consistently demonstrated an excellent recall of their History learning from their time at Brighstone at each of the sites we visited.

After the British Museum, over the three days we crammed a lot in! We experienced the underground every day, did lots of walking to see the sights of London (over 12 miles of walking!), walked down the Mall to see Buckingham Palace, rode the London Eye and sailed on a River Cruise, had a fantastic time at the Back to the Future musical, explored the Tower of London, walked across Tower Bridge, and walked past Downing Street and through Trafalgar Square. We also had a fantastic tour of the Houses of Parliament, where the children showed exceptional knowledge of politics and voting during the education workshop, and very articulately argued their cases in the different debates. We also sat in on a debate in the House of Commons (about the lowering of the voting age) and had a Q&A session with our very own MP, Richard Quigley!

All in all, the children were fantastic, and we thoroughly enjoyed spending time with them. I was very impressed with their knowledge, interest and curiosity, as well as their resilience with all the walking in the sunny weather! Thank you to the parents for supporting this trip, as well as to the BSA, WightAid and the Rotary for their very generous donations. Also, thank you to Mrs Denness and Tony Saunders (governor) for accompanying us. (See more photos on Facebook.)



Yesterday (I am writing this on Sunday), our **country dancers** once again wowed the crowds at Brighstone Horticultural Society's Summer Show, where the fine weather finally enabled us to use the maypole! We performed four dances for the appreciative crowd, and I am very thankful to the children and parents/carers for supporting us to continue this Brighstone tradition. All of our children also entered the handwriting competition, as well as other classes, and I saw many proud children walking around with rosettes! Well done to all.

We have a busy week ahead of us. The children are busy rehearsing for **The Bee Musical**, which is being performed on the afternoon and evening of Tuesday 22nd; Thursday sees our annual **Forest Day**, during which the whole school will walk up to Brighstone Forest for a fun day led by Kathy Grogan; and then Thursday evening presents our **Summer Shindig**, which promises to be an enjoyable evening of live music, pizza and a bar, all raising money for the school. Please do buy your tickets if you haven't already done so, and spread the word! Tickets are available online via the QR code on the poster, as well as from the school office and the village shop.



Over the summer holidays, we will be busy setting up our new **Resourced Provision**, as well as preparing our classrooms for the new academic year. We have received many wonderful and generous donations for our **therapeutic classrooms** and are still gratefully accepting more. If you or someone you know has any spare plants or neutral-coloured items such as cushions, lamps, armchairs, sofas, rugs, etc., we'd love to hear from you. Thank you.

With best wishes,

Mrs Lennon and the Brighstone team

Collective Worship

This week, we been focusing on Respect: Valuing different opinions

We thought about how sometimes there is no right or wrong answer. If I asked "What is the best colour?", I would receive lots of different answers. Everyone has their own opinion or idea, and we should respect that.

We watched Barney and Bella as they discovered their own opinions and the importance of respecting these. We can still be friends with people, and respect others, even if we have different opinions, thoughts or ideas. We can show respect in the way that we listen to each other, and how we respond. Which of these statements do you think show respect?

Why can't you be the same as me?

That's a silly idea.

I've never thought of it like that before.

Can you tell me why you think that?

I'm right and I won't listen to you!

Prayer for Forgiveness and Respect

Lord, sometimes we are rude and cross. Please forgive us, and help us show respect.

Lord, sometimes we don't listen to others.

Please forgive us, and help us show respect.

Lord, sometimes we only think of ourselves.

Please forgive us, and help us show respect.

Amen



School Dinners

Children in **Year R, 1 and 2** are entitled to a 'universal' **free** school meal everyday.

Children in Years 3-6 are charged at **£3.20** per day. Yoghurt, fruit, salad and jacket potatoes are available every day.

Baguettes available on Tuesdays and Thursday - Ham, Cheese or Tuna

The school dinner menus can now be found on pp7-8 in the Buzz, and they are always available on our website.

Poetry Corner

Thunderstorms

My mind has thunderstorms,
That brood for heavy hours:
Until they rain me words,
My thoughts are drooping flowers
And sulking, silent birds.

Yet come, dark thunderstorms,
And brood your heavy hours;
For when you rain me words,
My thoughts are dancing flowers
And joyful singing birds.

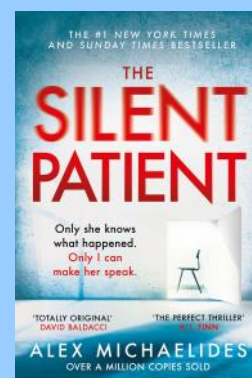


Reading Recommendations

Each week, we include a book recommendation from a child and/or adult.

This week, Mrs Jones recommends *The Silent Patient* by Alex Michaelides

This was a perfect book to read on holiday. It kept me gripped throughout and came with a real shock moment at the end that made me gasp! This is the book for you if you are a fan of crime/psychological thrillers!
Enjoy.



Safeguarding

If you have a concern about a child you can call the police on 999 if you feel they are at risk of immediate harm

You can contact the NSPCC:

Contact the NSPCC Helpline

If you have any concerns at all about a child's safety or wellbeing, don't hesitate to contact us.

Call us or email help@nspcc.org.uk

0808 800 5000

Find out more

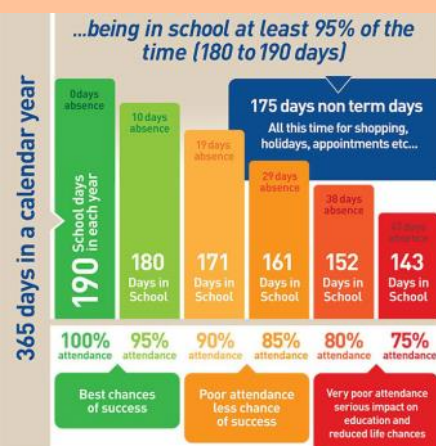
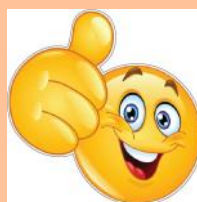
Or call children's services 0300 300 0117

Attendance Matters!

Week Commencing 14th July
(Whole school attendance target: 96.5%)

Actual Attendance: **96.34%**

Late marks this week: 7



<https://www.nhs.uk/live-well/is-my-child-too-ill-for-school/>



Brighstone
School
Association

Registered Charity No. 1043555

***Thank you for all
of your support
this school year!***



BSA ASTRA RECYCLING BIN

We take...

Clothes
Shoes
Bed Linen
Accessories
(Such as belts, hats & handbags)
Soft Toys

We can't take...

Duvets or Cushions
Off Cuts
Carpet or Curtains



Find our recycling bin at the front entrance of the school.

*Parents,
Family members
& friends of Brighstone
Primary School*

**Does your place of
work offer the Match
Funding Scheme?**

Get in touch with us if your employers could
help our BSA fundraisers via email at
brighstoneschoolassoc@gmail.com

BRIGHSTONE CE PRIMARY SCHOOL
GOVERNORS PRESENT

SUMMER SHINDIG

THURSDAY 24TH JULY

7PM | SCHOOL FIELD
TO | WARNES LANE
10:30PM | BRIGHSTONE

JOIN US FOR AN EVENING OF LIVE MUSIC,
DANCING AND GREAT FOOD.

RAISING FUNDS FOR
BRIGHSTONE CE PRIMARY SCHOOL

TICKETS AVAILABLE FROM
THE BRIGHSTONE VILLAGE
SHOP AND THE SCHOOL
OFFICE (CASH ONLY)



TO PAY BY CARD
SCAN THE
QR CODE.

ADULT TICKETS £10 | TEEN TICKETS £5
(UNDER 12S GO FREE)

ALL UNDER 18S MUST BE ACCOMPANIED BY AN ADULT

IF YOU HAVE ANY PROBLEMS BOOKING PLEASE CONTACT EMILY
ON E.RUFIAN@BRIGHSTONEPRIMARY.ORG.UK

[HTTPS://BRIGHSTONE-CE-PRIMARY-SCHOOL-GOVERNORS-PRESENT.SQUARE.SITE/](https://brighstone-ce-primary-school-governors-present.square.site/)

Plea for donations of: Table lamps, fairy lights, cushions and plants!

At Brighstone, we would like to develop our classrooms into calmer, more neutral 'therapeutic classrooms'.

"Therapeutic classrooms are a new approach that redefines the traditional classroom set up. The average UK classroom is bright, cluttered, overwhelming and outdated, and is not designed around the needs of our children today."

Children deserve to feel comfortable, safe and inspired, especially when we know there has been a rise in the numbers of children struggling with their social, emotional and mental health. Teachers up and down the country are reporting increases in school refusal, dysregulated behaviours, disengagement and low social skills. Making changes to the classroom can help."

What is a therapeutic classroom?

"Therapeutic classrooms are welcoming, safe, inviting environments that cultivate learning through their design. They calm stress hormones and increase feelings of emotional safety, whilst meeting the emotional and mental health needs of the children. Therapeutic classrooms include calm spaces and flexible seating in every room as standard, and allow children to work where they feel most comfortable."

They take into consideration space, lighting, comfortability, accessibility, inclusivity and connective learning. Therapeutic classrooms are inspiring places that children want to be in and are underpinned by science. "

<https://www.tpctherapy.co.uk/therapeutic-classrooms/>

To start this process, we are looking to introduce **table lamps** and **fairy lights** (so we can turn off or reduce the use of the bright overhead lighting), **cushions** (to make comfy seating areas) and **plants**.

As budget is tight, we are wondering if you have, or know of anyone who has, any spare table lamps, cushions, fairy lights and plants that you no longer need. To minimise the use of bright colours, ideally these new furnishings need to be in neutral colours.

Please contact the school office if you have anything that you would like to donate.

Thank you!



SPRING/SUMMER 2025 MENU

WEEK 2

W/C: 28/04/2025, 19/05/2025, 16/06/2025, 07/07/2025, 28/07/2025,
15/09/2025, 06/10/2025

		MONDAY	TUESDAY	WEDNESDAY	THURSDAY	FRIDAY
HOT DISHES	OPTION 1	Macaroni Cheese	BBQ Chicken Pizza Served with Potato Wedges	Roast Gammon Served with Roast Potatoes and Gravy	Beef Bolognese Served with Wholewheat Pasta	Fish Fingers Served with Chips
	OPTION 2	Veggie Meatballs in Tomato Sauce with Wholegrain Rice	Meatless Feast Cheesy Pizza Served with Potato Wedges	Sweet Potato, Chickpea and Herb Roast Served with Roast Potatoes and Gravy	Vegetable Fajita Wrap Served with Wholegrain Rice	Quorn Dippers Served with Chips
	OPTION 3	Tomato Pasta Fresh, Homemade Tomato Sauce with Pasta	Tomato Pasta Fresh, Homemade Tomato Sauce with Pasta	Tomato Pasta Fresh, Homemade Tomato Sauce with Pasta	Tomato Pasta Fresh, Homemade Tomato Sauce with Pasta	Tomato Pasta Fresh, Homemade Tomato Sauce with Pasta
HOT DISHES ARE SERVED WITH TWO VEGETABLES AND FRESHLY BAKED BREAD						
DELI DISHES	OPTION 4	Jacket Potato with a Choice of Toppings	Ham or Tuna Baguette	Jacket Potato with a Choice of Toppings	Ham or Tuna Baguette	Jacket Potato with a Choice of Toppings
	OPTION 5	No Baguette	Cheese Baguette	No Baguette	Cheese Baguette	No Baguette
DELI DISHES ARE SERVED WITH MIXED SALAD						
DESSERT		Apple and Golden Syrup Cake	Strawberry Jelly	Flapjack with Fruit	Chocolate Ice Cream	Lemon Cake



AVAILABLE DAILY
Fresh fruit, salad, yoghurt and water



Chartwells
Schools

Vegetarian
 Vegan
 Oily Fish
 Wholegrain
 Fruity!
 Nutritionist's Choice

Our menu is subject to change. Please be assured that all notified medical diets and allergy requirements will be safely catered for.

Menu_21_202407

SPRING/SUMMER 2025 MENU

WEEK 3

W/C: 05/05/2025, 02/06/2025, 23/06/2025, 14/07/2025, 01/09/2025,
22/09/2025, 13/10/2025

		MONDAY	TUESDAY	WEDNESDAY	THURSDAY	FRIDAY
HOT DISHES	OPTION 1	Cheese and Tomato Pizza Served with Wholewheat Pasta	Sausage Hot Dog Served with Potato Wedges	Roast Chicken Served with Roast Potatoes and Gravy	Oat Crusted Chicken Served with Wholegrain Rice	Fish Fingers Served with Chips
	OPTION 2	Chilli No Carne With Crispy Tortilla Served with Wholegrain Rice	Veggie Sausage Hot Dog Served with Potato Wedges	Roast Quorn Served with Roast Potatoes and Gravy	Meatless Shepherd's Pie Served with Gravy	Quorn Dippers Served with Chips
	OPTION 3	Tomato Pasta Fresh, Homemade Tomato Sauce with Pasta	Tomato Pasta Fresh, Homemade Tomato Sauce with Pasta	Tomato Pasta Fresh, Homemade Tomato Sauce with Pasta	Tomato Pasta Fresh, Homemade Tomato Sauce with Pasta	Tomato Pasta Fresh, Homemade Tomato Sauce with Pasta
HOT DISHES ARE SERVED WITH TWO VEGETABLES AND FRESHLY BAKED BREAD						
DELI DISHES	OPTION 4	Jacket Potato with a Choice of Toppings	Ham or Tuna Baguette	Jacket Potato with a Choice of Toppings	Ham or Tuna Baguette	Jacket Potato with a Choice of Toppings
	OPTION 5	No Baguette	Cheese Baguette	No Baguette	Cheese Baguette	No Baguette
DELI DISHES ARE SERVED WITH MIXED SALAD						
DESSERT		Flapjack	Peach and Ginger Pudding	Oatie Cookie with Fruit	Vanilla Ice Cream	Crunchy Chocolate Mousse



AVAILABLE DAILY
Fresh fruit, salad, yoghurt and water



Chartwells
Schools

Vegetarian
 Vegan
 Oily Fish
 Wholegrain
 Fruity!
 Nutritionist's Choice

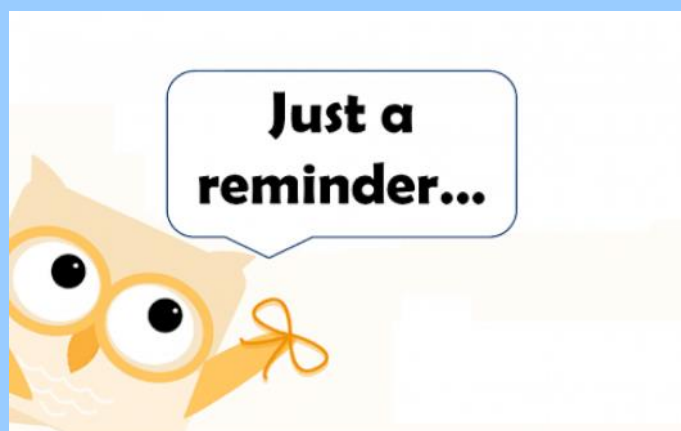
Our menu is subject to change. Please be assured that all notified medical diets and allergy requirements will be safely catered for.

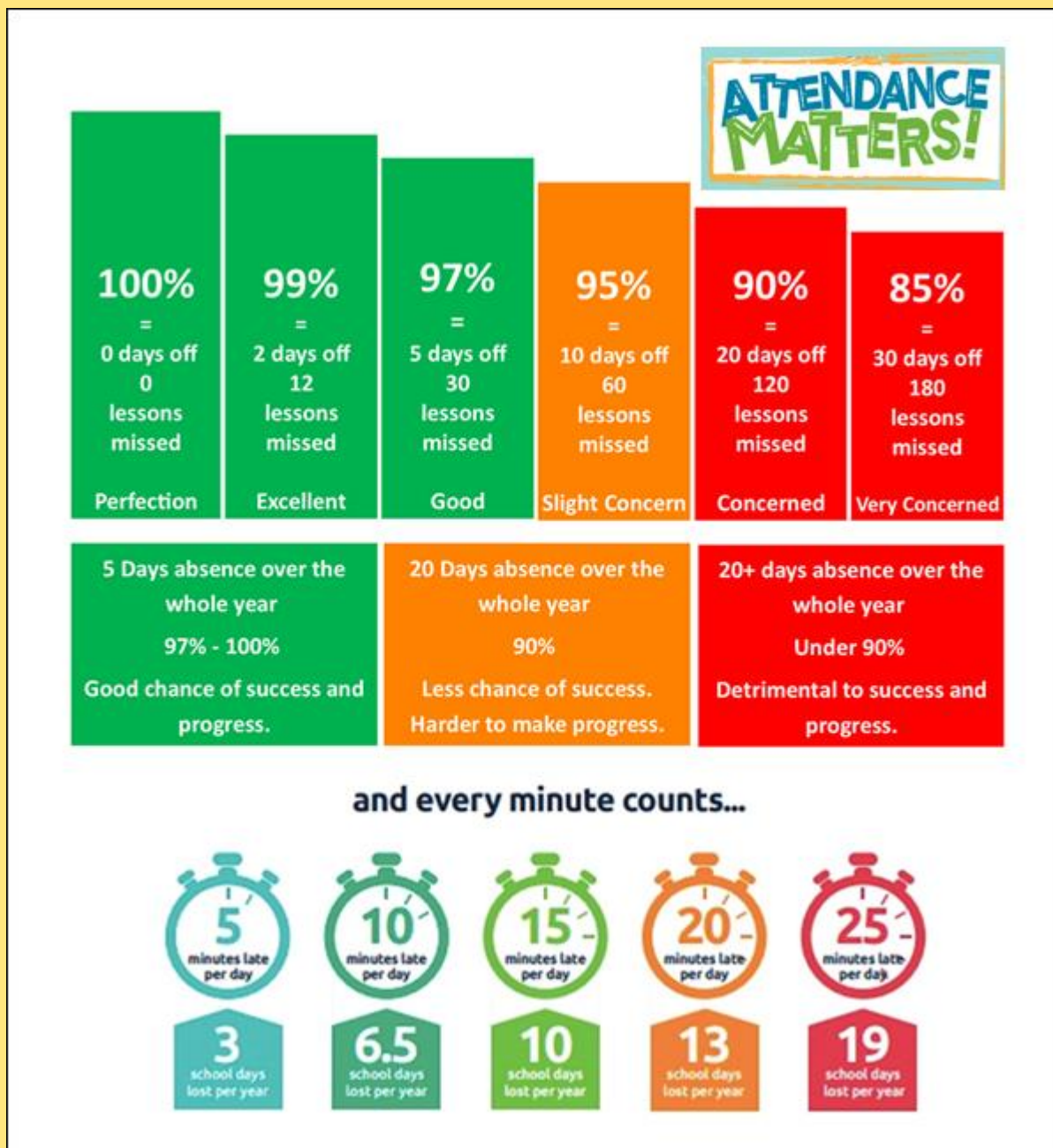
Menu_21_202407

Reminders

- PE Kit is navy blue top/jumper/hoodie with navy blue bottoms - **Branded items are not permitted**
- All hair accessories, socks, shoes and trainers must be in the school colours: navy blue, grey, black or white (no novelty socks)
- All long hair must be tied back (pony tail, bun, plaits etc...) to avoid the spreading of head lice
- No jewellery to be worn other than stud earrings, which must be removed or taped over on PE days
- Gates open at 8.25am and are locked at 8.30am, and in the afternoon, gates are opened at 2.55pm and locked at 3.10pm
- **As teachers are busy welcoming and supervising children first thing in the morning, please could all messages be given to Mrs Pelosi in the office, who will then pass them on to the teacher**
- Only **water** is allowed in drinks bottles, and snacks must be fruit only

Thank you!





At Brighstone Primary School we have high expectations for our children. This begins with attendance and punctuality as they are important life skills to learn.

Good school attendance habits are best started early. Children learn from those around them and you as parents/carers set the standards and expectations for your child. Lateness has a negative impact; being late may disrupt already settled children and lessons, affect achievement and embarrass, worry or upset your child. We understand that there may be an occasional unavoidable instance where you are late, but if it happens frequently, please let us know if there may be something that we can do to help.

What to do if your child is unwell:

Check the NHS Guidance: <https://www.nhs.uk/live-well/is-my-child-too-ill-for-school/>

You should notify the school office before 9am every morning your child is unable to attend due to illness. You can either telephone on 740285 or email on office@brighstoneprimary.org.uk. Telephone calls must be followed up in writing to authorise the (illness) absence.

BRIGHSTONE C.E. AIDED PRIMARY SCHOOL

CURRICULUM

LEARNING BEHAVIOURS

COMMUNITY LINKS

LIFELONG LEARNERS

ETHOS AND CULTURE

ETHOS AND CULTURE

WE PROVIDE A COLLABORATIVE AND NURTURING ENVIRONMENT WITH A SUPPORTIVE CHRISTIAN ETHOS WHERE EVERYONE IS ENABLED TO THRIVE AND FLOURISH IN THEIR UNIQUE WAY.

LEARNING AND ACHIEVING THROUGH LOVE, COURAGE AND RESPECT

Our vision statement works alongside our mission statement 'Learning and Achieving Through Love, Courage and Respect', which includes our values, to reflect and guide our culture, ethos and decision making. This is also on our website.

Our values, as part of the mission statement (tagline), are the roots and foundation that feed and nourish our school.

The branches reflect the different aspects of life in our school.

The school logo in the centre of the tree represents the Christian ethos that is at the heart of everything we do.



Respect Charter

at Brighstone CE Aided Primary School

At Brighstone CE Aided Primary School we believe staff, parents and children are entitled to a safe and protective environment in which to learn and work. We strive to ensure that our school offers a warm and nurturing environment. All members of the school community and visitors should demonstrate mutual respect, to feel safe, work together and to use restorative approaches as the foundation of our practice. Any behaviour that may lead to feelings of harassment, alarm or distress to members of our community, will not be tolerated and action taken.

Expectations

- That all adults set a good example to children at all times, showing them how to get along with all members of the school and the wider community.
- That no one - staff, governors, parents, carers, volunteers or children - be subjected to abusive behaviour or any form of threats from visitors on the school premises.
- That physical attacks and threatening behaviour, abusive or insulting language verbal or written (including on social media), to staff, governors, parents, carers, volunteers, children and other users of the school premises will not be tolerated and may lead to a ban from school premises and/or police action.

Types of behaviour that are considered serious and unacceptable

This is not an exhaustive list but seeks to provide illustrations of such behaviour:

- Shouting, either in person or over the telephone
- Speaking in an aggressive/threatening tone
- Physically intimidating, e.g. standing very close
- The use of aggressive hand gestures/exaggerated movements
- Physical threats
- Shaking or holding a fist towards another person
- Swearing and name calling
- Pushing
- Slapping, punching, hitting or kicking
- Racist, homophobic or other hateful behaviour
- Sexist comments or sexual innuendo
- Disrespecting religion or belief
- Inappropriate communications (posting on Social Networking sites, emails or letters, etc.) which could bring the school into disrepute or be deemed as bullying, harassment and/or a hate-related

The school reserves the right to take any necessary actions to ensure that members of the school community are not subjected to any form of abuse in line with policy and procedure. If you choose to engage in these behaviours you may be asked to leave the site or the police may be called.

Thank you for your understanding and support

If your message is **urgent** or about **attendance** contact Mrs Pelosi in the **office**:
01983 740285
office@brighstoneprimary.org.uk
Office Hours 8am - 4pm

If you would like to speak with the **Headteacher** Mrs Lennon, you can find her at the school gate every morning or you can call 740285 to make an appointment with her



For **general enquiries** you can call or email the office, text the school messaging service or send a message to our school **Facebook** page: <https://www.facebook.com/BrighstoneCEPrimarySchool>
Our Facebook page is open so you do not need a personal account to view it

If you have concerns about your child's **learning** and progress, email the class teacher in the first instance and allow at least 1 working day for a reply:

Years R, 1 & 2 - teacher.bumblebee@brighstoneprimary.org.uk
Years 3 & 4 - teacher.honeybee@brighstoneprimary.org.uk
Years 5 & 6 - teacher.ivybee@brighstoneprimary.org.uk

If you have concern regarding **safeguarding** or your **child's mental health and wellbeing** please contact Mrs Jones. You can speak to her on the playground every morning, call into the school office or email m.jones@brighstoneprimary.org.uk
safeguarding@brighstoneprimary.org.uk

Our **Newsletter** is published every Friday with key information for parents and carers. You can find it on our school website: <https://www.brighstoneprimary.org.uk/category/the-buzz/>

Contact us



If you have a **safeguarding** concern about a child outside of school hours you can call the police on 999 if you feel they are at risk of immediate harm or contact Children's Services on 0300 300 0117

Please be reminded that all children need to wear the correct PE kit on PE days.
The correct PE kit is also needed for sports clubs.
Socks and hair accessories must be in the school colours.

School Day Timings

The school day is as follows:

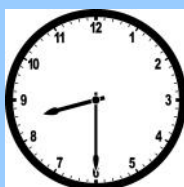
8.25am: Gates open

8.30am: School starts

3pm: School ends

3.10pm: Gates close

Many thanks.





- Tuesday 22nd July: The Bee Musical whole school play (1.30pm and 6pm)
- Thursday 24th July: Whole school Forest Day (further details to follow); Summer Shindig (7pm)
- Friday 25th July: Last day of term; Y6 Leavers' Service in St Mary's Church at 1.30pm

School Term Dates for 2024-2025

Please note that the school will be closed on the following remaining days in this academic year:

Day 4: Monday 28th July 2025

Day 5: Tuesday 29th July 2025

Term dates are available on our school website.

School Term Dates for 2025-2026

Please note that the school will be closed on the following days in the next academic year:

Day 1: Monday 1st September 2025

Day 2: Tuesday 2nd September 2025

Day 3: Wednesday 3rd September 2025

Day 4: Monday 1st June 2026

Day 5: Monday 27th July 2026

Term dates are available on our school website.