

The Buzz

11th July 2025



Brighstone C.E.
Primary School



Learning and Achieving Through
Love, Courage and Respect

Dear parents, carers and children,

Last Saturday saw some of our children take part in the **Mardi Gras** parade in Ryde. They showcased their wonderful Christmas tree costumes that represented the Brighstone Christmas Tree Festival. They all looked fantastic, and did really well along the long parade route. Thank you to Mrs Green and Mrs Woodhouse, as well as to the parents who helped, and to those who were able to come along to cheer us on.



On Tuesday morning, the children all took part in **transition morning**, where they spent time in their new classrooms, getting to know their new classmates and meeting their new (or current) teachers. They all seem very excited about moving up to their new year groups! Our Y6 children had their transition days at their new secondary schools, where they all had fun. It can be quite daunting moving from a small primary to a large secondary school, as well as getting the bus in some cases, but they all coped with it admirably.

There have been a few **sporting events** that have taken place over the last few weeks.



"A couple of Tuesdays ago, four of our Y5&6s headed to Ventnor Tennis Club to face six other teams from across the island in a tennis competition. There was some great play on show, with our team finishing in a very respectable fourth position, just one point behind the team in third!"

Two days later, eight Y3&4s went to Newclose County Cricket Ground to play in an U9 Countdown Cricket Festival. Victory over St Thomas saw us finish in sixth place with the team's cricket skills

improving across the afternoon!



Finishing off a busy week was the PEACH Games last Friday, with ten of our Y3&4s going to West Wight Sports Centre for a sports extravaganza. The children got to take part in activities such as American Football, Cricket, Football, Athletics, Tennis, Quidditch, Kurling, Archery and Boccia, as well as exploring the Island Games Village, great fun was had by all!



Our final sports event of the year was on Thursday 10th, with KS2 travelling to Ventnor Cricket Club for the Chance to Shine Skills Festival. The children took part in ten skill stations to showcase their talent in front of Isle of Wight and Ventnor coaches, before the afternoon group got the opportunity to play some diamond cricket matches."

Thank to Mr Goldsmith for organising these trips, as well as for writing the above report.



On Friday, our Y6 children attended a **Leavers' Service** held at Portsmouth Cathedral. The children take part in workshops in the morning followed by a service in the afternoon, with approximately 300 other children from schools across the Portsmouth Diocese! It was a fantastic day, and the children's behaviour was exemplary. The theme for this year was Triwonder, and the children enjoyed seeing their bee creations and prayers hanging as part of the huge installation. Tom and Poppy L proudly held our school banner as they proceeded down the aisle, Toby had the honour of accepting the candle for our school, and Izzy smartly stood at the front holding one of our bee creations. Everyone was in awe at the sound of the organ, especially so when they pulled out all the stops and the trumpets played their fanfare!

The **BSA's Summer Sizzler** took place on Friday afternoon. This is always a fun event, and the field was packed with families and staff having a fun and relaxing time in the sun. Mr Goldsmith got a soaking in the stocks again (followed by lots of eager children who also wanted to get wet!), there were stalls and games to test your skills (or luck!), a tasty BBQ and ice cream van helped to fill hungry tummies, and a foam party proved to be very popular! Entertainment was provided by Martha E, Larni's line dancing, the country dancers, and the sack race! Thank you to Richard and the rest of the BSA, and all the staff who helped, for organising this event to help raise money for the school.

With best wishes, Mrs Lennon and the Brighstone team

Collective Worship

This week, we been focusing on Respect: Valuing special places

We heard the story of when Jesus became angry in the temple. We don't often read about Jesus being angry, but when he visited the temple he was furious that the place where people were trying to worship had been turned into a market.



Do you think that Jesus was right to be angry?

Have you ever been inside a holy building and noticed how peaceful it can be? Where was it and how did it make you feel to be there? Have you also noticed the beautiful things that are used during worship?

Have you ever been angry when you have seen places and people disrespected?

Have you got a special place? How do you think you would feel if someone came along and ruined it?

Prayer for special places

Dear God,
Please help everyone to show respect for:
Each other
And for
Special places
Amen



School Dinners

Children in **Year R, 1 and 2** are entitled to a 'universal' **free** school meal everyday.

Children in Years 3-6 are charged at **£3.20** per day. Yoghurt, fruit, salad and jacket potatoes are available every day.

Baguettes available on Tuesdays and Thursday - Ham, Cheese or Tuna

The school dinner menus can now be found on pp7-8 in the Buzz, and they are always available on our website.

Poetry Corner

The Coast

Lighthouses and seashells,
Along a salty coast.
A whisper of wind,
Carries kites to fly with birds.
Surfers ride the waves,
Like a kid with a new bike.
While castles built for kings,
Wait for high tide.
Along the endless shoreline,
We will watch the boats.
Someday we will live along our friend,
The coast.

Emmaline Gibson



Reading Recommendations

Each week, we include a book recommendation from a child and/or adult.

This week, Oscar P recommends Stick Dog by Tom Watson.

This story is about a dog trying to find a burger. It's a funny story with simple drawings on every page that keeps you interested and want to read more. I would recommend it to children my age.



Safeguarding

If you have a concern about a child you can call the police on 999 if you feel they are at risk of immediate harm

You can contact the NSPCC:

Contact the NSPCC Helpline

If you have any concerns at all about a child's safety or wellbeing, don't hesitate to contact us.

Call us or email help@nspcc.org.uk

0808 800 5000

Find out more

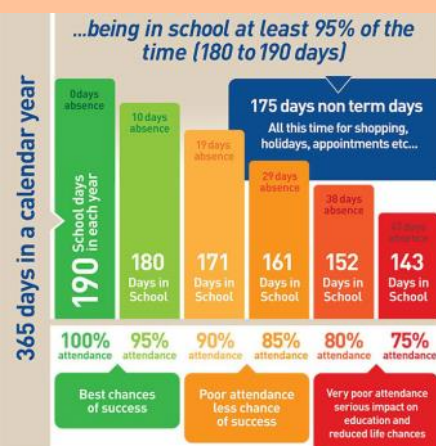
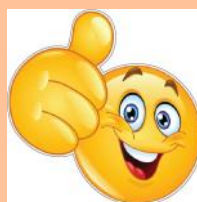
Or call children's services 0300 300 0117

Attendance Matters!

Week Commencing 7th July
(Whole school attendance target: 96.5%)

Actual Attendance: **96.76%**

Late marks this week: 13



<https://www.nhs.uk/live-well/is-my-child-too-ill-for-school/>

Golden Book

| | |
|-------------------|---|
| Bumble Bee | James for rushing to help a friend who'd asked if someone could help her. Ellis for really improving his handwriting so it's super neat! |
| Honey Bee | Bethan for her hard work in History lessons and for supporting her peers in a task. Alice for all the support she gives her classmates when they are stuck. Helena for her interest in our history topic, including her research and her application in lessons. |
| Ivy Bee | Charlotte B for lending her bicycle and helmet to another pupil in her class, so they could take part in the Bikeability course, also a big thank you to Mrs Bacon for bringing the bicycle into school - Nominated by Mrs Pelosi. |
| EARA | Ellis for now just taking one thing up the cupboard, but lots of things and helping out really well. <i>Nominated by Sammy G</i> |





Brighstone School Association

Join us for our

SUMMER SIZZLER

Friday,
11th July

School
Field

17:00 to 19:00

£5 ENTRY PER FAMILY
-PAY AT THE GATE
(CARD OR CASH ACCEPTED)

Events

Foam Party, BBQ Hot Dogs, Live Music,
Children's Races, Ice Cream van

For more information

www.facebook.com/brighstoneschoolassociation.com

Made with PosterMyWall.com



BSA ASTRA RECYCLING BIN

We take...

Clothes
Shoes
Bed Linen
Accessories
(Such as belts, hats & handbags)
Soft Toys

We can't take...

Duvets or Cushions
Off Cuts
Carpet or Curtains



Find our recycling bin at the front entrance of the school.

*Parents,
Family members
& friends of Brighstone
Primary School*

**Does your place of
work offer the Match
Funding Scheme?**

Get in touch with us if your employers could
help our BSA fundraisers via email at
brighstoneschoolassoc@gmail.com

BRIGHSTONE CE PRIMARY SCHOOL
GOVERNORS PRESENT

SUMMER SHINDIG

THURSDAY 24TH JULY

7PM | SCHOOL FIELD
TO | WARNES LANE
10:30PM | BRIGHSTONE

JOIN US FOR AN EVENING OF LIVE MUSIC,
DANCING AND GREAT FOOD.

RAISING FUNDS FOR
BRIGHSTONE CE PRIMARY SCHOOL

TICKETS AVAILABLE FROM
THE BRIGHSTONE VILLAGE
SHOP AND THE SCHOOL
OFFICE (CASH ONLY)



TO PAY BY CARD
SCAN THE
QR CODE.

ADULT TICKETS £10 | TEEN TICKETS £5
(UNDER 12S GO FREE)

ALL UNDER 18S MUST BE ACCOMPANIED BY AN ADULT

IF YOU HAVE ANY PROBLEMS BOOKING PLEASE CONTACT EMILY
ON E.RUFIAN@BRIGHSTONEPRIMARY.ORG.UK

[HTTPS://BRIGHSTONE-CE-PRIMARY-SCHOOL-GOVERNORS-PRESENT.SQUARE.SITE/](https://brighstone-ce-primary-school-governors-present.square.site/)

Plea for donations of: Table lamps, fairy lights, cushions and plants!

At Brighstone, we would like to develop our classrooms into calmer, more neutral 'therapeutic classrooms'.

"Therapeutic classrooms are a new approach that redefines the traditional classroom set up. The average UK classroom is bright, cluttered, overwhelming and outdated, and is not designed around the needs of our children today."

Children deserve to feel comfortable, safe and inspired, especially when we know there has been a rise in the numbers of children struggling with their social, emotional and mental health. Teachers up and down the country are reporting increases in school refusal, dysregulated behaviours, disengagement and low social skills. Making changes to the classroom can help."

What is a therapeutic classroom?

"Therapeutic classrooms are welcoming, safe, inviting environments that cultivate learning through their design. They calm stress hormones and increase feelings of emotional safety, whilst meeting the emotional and mental health needs of the children. Therapeutic classrooms include calm spaces and flexible seating in every room as standard, and allow children to work where they feel most comfortable."

They take into consideration space, lighting, comfortability, accessibility, inclusivity and connective learning. Therapeutic classrooms are inspiring places that children want to be in and are underpinned by science. "

<https://www.tpctherapy.co.uk/therapeutic-classrooms/>

To start this process, we are looking to introduce **table lamps** and **fairy lights** (so we can turn off or reduce the use of the bright overhead lighting), **cushions** (to make comfy seating areas) and **plants**.

As budget is tight, we are wondering if you have, or know of anyone who has, any spare table lamps, cushions, fairy lights and plants that you no longer need. To minimise the use of bright colours, ideally these new furnishings need to be in neutral colours.

Please contact the school office if you have anything that you would like to donate.

Thank you!



SPRING/SUMMER 2025 MENU



WEEK 2

W/C: 28/04/2025, 19/05/2025, 16/06/2025, 07/07/2025, 28/07/2025,
15/09/2025, 06/10/2025

| | | MONDAY | TUESDAY | WEDNESDAY | THURSDAY | FRIDAY |
|---|----------|--|--|---|---|---|
| HOT DISHES | OPTION 1 | Macaroni Cheese | BBQ Chicken Pizza Served with Potato Wedges | Roast Gammon Served with Roast Potatoes and Gravy | Beef Bolognese Served with Wholewheat Pasta | Fish Fingers Served with Chips |
| | OPTION 2 | Veggie Meatballs in Tomato Sauce with Wholegrain Rice | Meatless Feast Cheesy Pizza Served with Potato Wedges | Sweet Potato, Chickpea and Herb Roast Served with Roast Potatoes and Gravy | Vegetable Fajita Wrap Served with Wholegrain Rice | Quorn Dippers Served with Chips |
| | OPTION 3 | Tomato Pasta Fresh, Homemade Tomato Sauce with Pasta | Tomato Pasta Fresh, Homemade Tomato Sauce with Pasta | Tomato Pasta Fresh, Homemade Tomato Sauce with Pasta | Tomato Pasta Fresh, Homemade Tomato Sauce with Pasta | Tomato Pasta Fresh, Homemade Tomato Sauce with Pasta |
| HOT DISHES ARE SERVED WITH TWO VEGETABLES AND FRESHLY BAKED BREAD | | | | | | |
| DELI DISHES | OPTION 4 | Jacket Potato with a Choice of Toppings | Ham or Tuna Baguette | Jacket Potato with a Choice of Toppings | Ham or Tuna Baguette | Jacket Potato with a Choice of Toppings |
| | OPTION 5 | No Baguette | Cheese Baguette | No Baguette | Cheese Baguette | No Baguette |
| DELI DISHES ARE SERVED WITH MIXED SALAD | | | | | | |
| DESSERT | | Apple and Golden Syrup Cake | Strawberry Jelly | Flapjack with Fruit | Chocolate Ice Cream | Lemon Cake |



AVAILABLE DAILY
Fresh fruit, salad, yoghurt and water



Chartwells
Schools

Vegetarian
 Vegan
 Oily Fish
 Wholegrain
 Fruity!
 Nutritionist's Choice

Our menu is subject to change. Please be assured that all notified medical diets and allergy requirements will be safely catered for.

Menu_21_202407

SPRING/SUMMER 2025 MENU



WEEK 3

W/C: 05/05/2025, 02/06/2025, 23/06/2025, 14/07/2025, 01/09/2025,
22/09/2025, 13/10/2025

| | | MONDAY | TUESDAY | WEDNESDAY | THURSDAY | FRIDAY |
|---|----------|---|---|---|---|---|
| HOT DISHES | OPTION 1 | Cheese and Tomato Pizza Served with Wholewheat Pasta | Sausage Hot Dog Served with Potato Wedges | Roast Chicken Served with Roast Potatoes and Gravy | Oat Crusted Chicken Served with Wholegrain Rice | Fish Fingers Served with Chips |
| | OPTION 2 | Chilli No Carne With Crispy Tortilla Served with Wholegrain Rice | Veggie Sausage Hot Dog Served with Potato Wedges | Roast Quorn Served with Roast Potatoes and Gravy | Meatless Shepherd's Pie Served with Gravy | Quorn Dippers Served with Chips |
| | OPTION 3 | Tomato Pasta Fresh, Homemade Tomato Sauce with Pasta | Tomato Pasta Fresh, Homemade Tomato Sauce with Pasta | Tomato Pasta Fresh, Homemade Tomato Sauce with Pasta | Tomato Pasta Fresh, Homemade Tomato Sauce with Pasta | Tomato Pasta Fresh, Homemade Tomato Sauce with Pasta |
| HOT DISHES ARE SERVED WITH TWO VEGETABLES AND FRESHLY BAKED BREAD | | | | | | |
| DELI DISHES | OPTION 4 | Jacket Potato with a Choice of Toppings | Ham or Tuna Baguette | Jacket Potato with a Choice of Toppings | Ham or Tuna Baguette | Jacket Potato with a Choice of Toppings |
| | OPTION 5 | No Baguette | Cheese Baguette | No Baguette | Cheese Baguette | No Baguette |
| DELI DISHES ARE SERVED WITH MIXED SALAD | | | | | | |
| DESSERT | | Flapjack | Peach and Ginger Pudding | Oatie Cookie with Fruit | Vanilla Ice Cream | Crunchy Chocolate Mousse |



AVAILABLE DAILY
Fresh fruit, salad, yoghurt and water



Chartwells
Schools

Vegetarian
 Vegan
 Oily Fish
 Wholegrain
 Fruity!
 Nutritionist's Choice

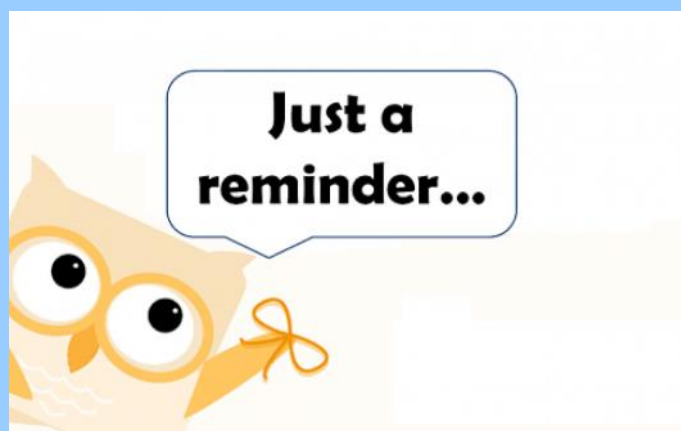
Our menu is subject to change. Please be assured that all notified medical diets and allergy requirements will be safely catered for.

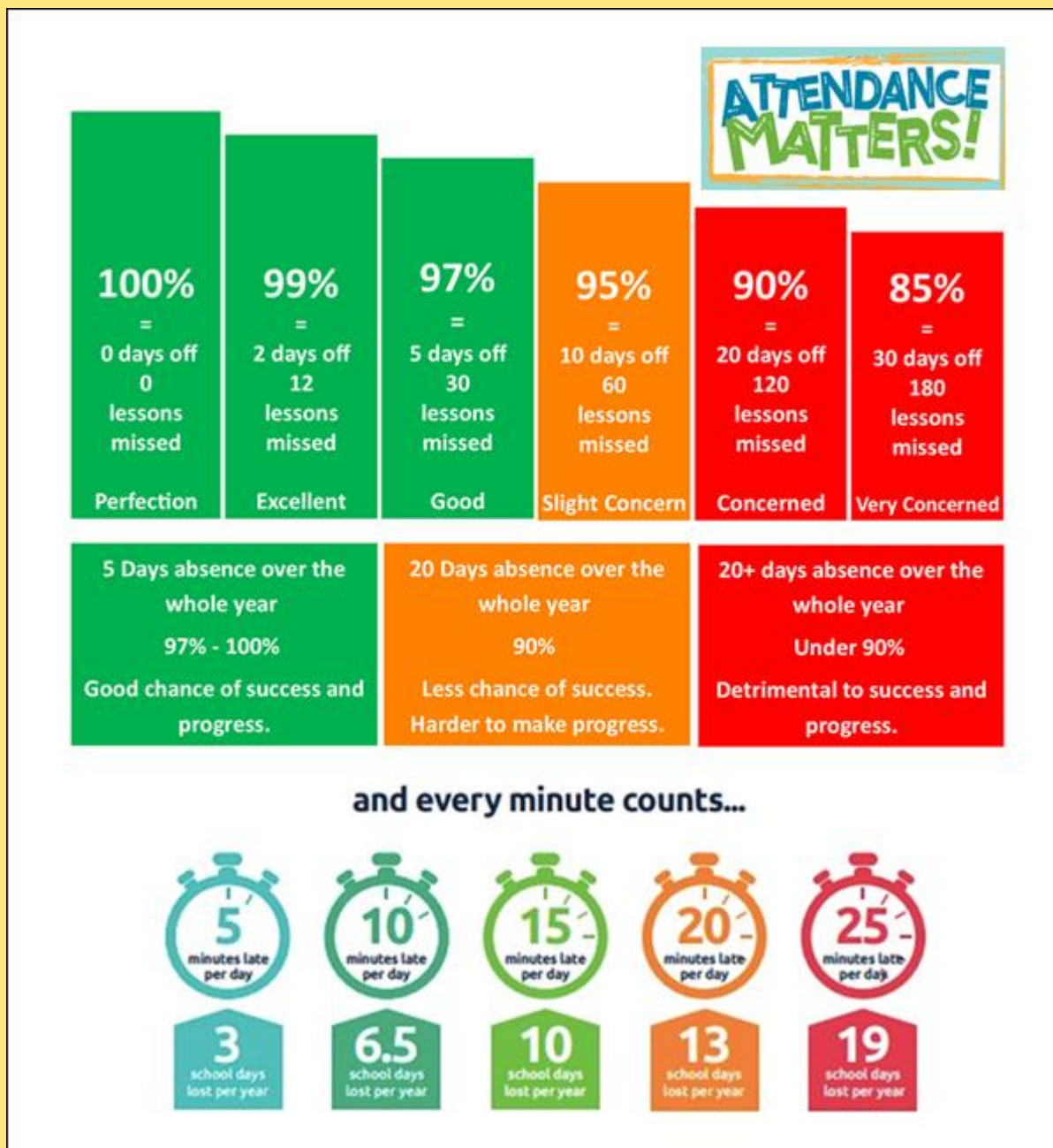
Menu_21_202407

Reminders

- PE Kit is navy blue top/jumper/hoodie with navy blue bottoms - **Branded items are not permitted**
- All hair accessories, socks, shoes and trainers must be in the school colours: navy blue, grey, black or white (no novelty socks)
- All long hair must be tied back (pony tail, bun, plaits etc...) to avoid the spreading of head lice
- No jewellery to be worn other than stud earrings, which must be removed or taped over on PE days
- Gates open at 8.25am and are locked at 8.30am, and in the afternoon, gates are opened at 2.55pm and locked at 3.10pm
- **As teachers are busy welcoming and supervising children first thing in the morning, please could all messages be given to Mrs Pelosi in the office, who will then pass them on to the teacher**
- Only **water** is allowed in drinks bottles, and snacks must be fruit only

Thank you!





At Brighstone Primary School we have high expectations for our children. This begins with attendance and punctuality as they are important life skills to learn.

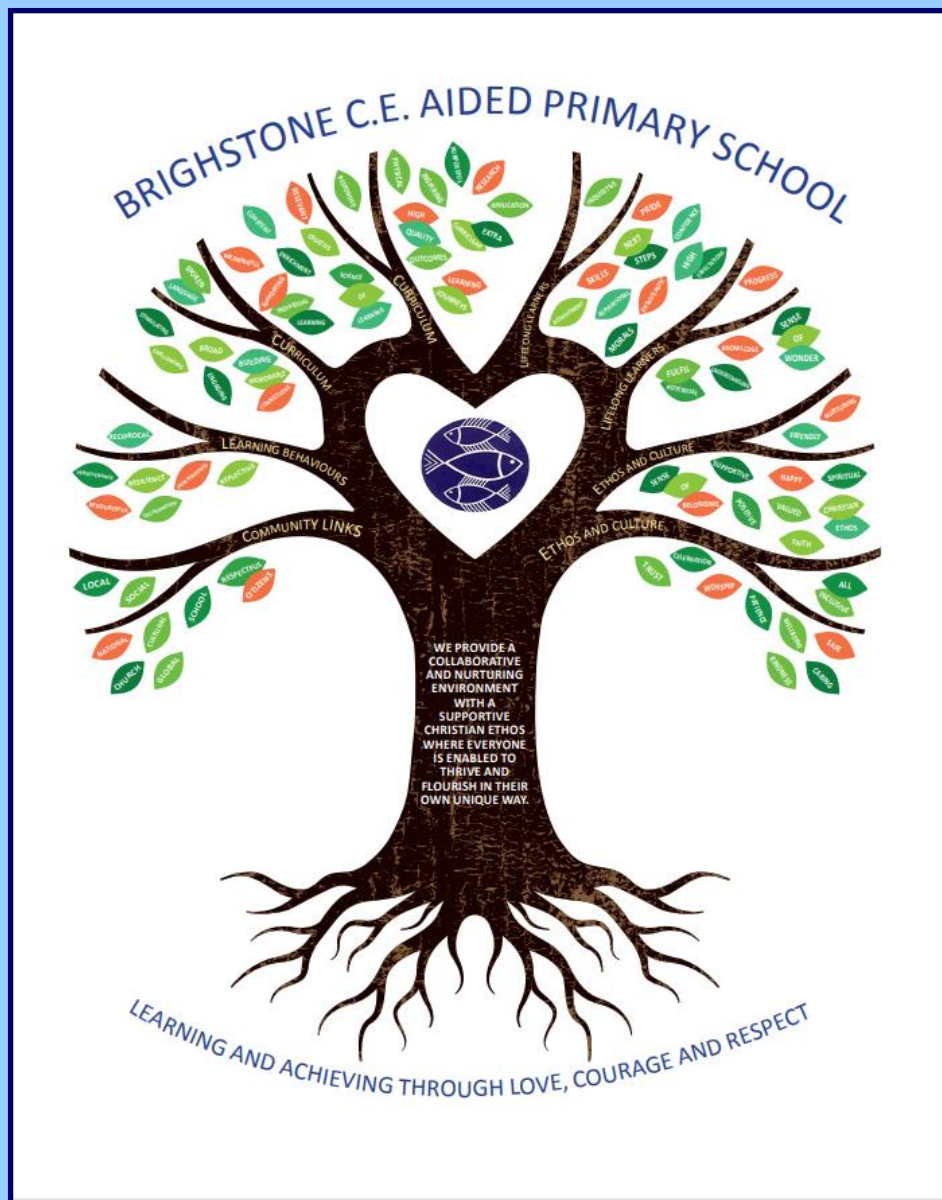
Good school attendance habits are best started early. Children learn from those around them and you as parents/carers set the standards and expectations for your child. Lateness has a negative impact; being late may disrupt already settled children and lessons, affect achievement and embarrass, worry or upset your child. We understand that there may be an occasional unavoidable instance where you are late, but if it happens frequently, please let us know if there may be something that we can do to help.

What to do if your child is unwell:

Check the NHS Guidance: <https://www.nhs.uk/live-well/is-my-child-too-ill-for-school/>

You should notify the school office before 9am every morning your child is unable to attend due to illness. You can either telephone on 740285 or email on office@brighstoneprimary.org.uk. Telephone calls must be followed up in writing to authorise the (illness) absence.

Our Vision Statement



A vision statement 'seeks to inspire and give direction to all stakeholders (staff, children, parents, governors and the wider community). It is an aspirational description of what an organisation would like to achieve or accomplish in the mid-term or long-term future. It is intended to serve as a clear guide for choosing current and future courses of action'.

Our vision statement works alongside our mission statement 'Learning and Achieving Through Love, Courage and Respect', which includes our values, to reflect and guide our culture, ethos and decision making. This is also on our website.

As a school, in 2020 we worked together with a range of stakeholders to write our vision statement, and we decided to create a visual vision statement to make it stand out and be memorable. Each part of the image has been carefully chosen to represent our school:

Our values, as part of the mission statement (tagline), are the roots and foundation that feed and nourish our school.

The vision statement is the main body (trunk) that guides all our actions.

The branches reflect the different aspects of life in our school.

The leaves show examples of how these aspects are shown.

The school logo in the centre of the tree represents the Christian ethos that is at the heart of everything we do.



Respect Charter

at Brighstone CE Aided Primary School

At Brighstone CE Aided Primary School we believe staff, parents and children are entitled to a safe and protective environment in which to learn and work. We strive to ensure that our school offers a warm and nurturing environment. All members of the school community and visitors should demonstrate mutual respect, to feel safe, work together and to use restorative approaches as the foundation of our practice. Any behaviour that may lead to feelings of harassment, alarm or distress to members of our community, will not be tolerated and action taken.

Expectations

- That all adults set a good example to children at all times, showing them how to get along with all members of the school and the wider community.
- That no one - staff, governors, parents, carers, volunteers or children - be subjected to abusive behaviour or any form of threats from visitors on the school premises.
- That physical attacks and threatening behaviour, abusive or insulting language verbal or written (including on social media), to staff, governors, parents, carers, volunteers, children and other users of the school premises will not be tolerated and may lead to a ban from school premises and/or police action.

Types of behaviour that are considered serious and unacceptable

This is not an exhaustive list but seeks to provide illustrations of such behaviour:

- Shouting, either in person or over the telephone
- Speaking in an aggressive/threatening tone
- Physically intimidating, e.g. standing very close
- The use of aggressive hand gestures/exaggerated movements
- Physical threats
- Shaking or holding a fist towards another person
- Swearing and name calling
- Pushing
- Slapping, punching, hitting or kicking
- Racist, homophobic or other hateful behaviour
- Sexist comments or sexual innuendo
- Disrespecting religion or belief
- Inappropriate communications (posting on Social Networking sites, emails or letters, etc.) which could bring the school into disrepute or be deemed as bullying, harassment and/or a hate-related

The school reserves the right to take any necessary actions to ensure that members of the school community are not subjected to any form of abuse in line with policy and procedure. If you choose to engage in these behaviours you may be asked to leave the site or the police may be called.

Thank you for your understanding and support

If your message is **urgent** or about **attendance**

contact Mrs Pelosi in the **office**:

01983 740285

office@brighstoneprimary.org.uk

Office Hours 8am - 4pm

If you would like to speak with the **Headteacher**

Mrs Lennon, you can find her at the school gate every morning or you can call 740285 to make an appointment with her



For **general enquiries** you can call or email the office, text the school messaging service or send a message to our school **Facebook** page: <https://www.facebook.com/BrighstoneCEPrimarySchool>

Our Facebook page is open so you do not need a personal account to view it

If you have concerns about your child's **learning** and progress, email the class teacher in the first instance and allow at least 1 working day for a reply:

Years R, 1 & 2 - teacher.bumblebee@brighstoneprimary.org.uk

Years 3 & 4 - teacher.honeybee@brighstoneprimary.org.uk

Years 5 & 6 - teacher.ivybee@brighstoneprimary.org.uk

If you have concern regarding **safeguarding** or your **child's mental health and wellbeing** please contact Mrs Jones. You can speak to her on the playground every morning, call into the school office or email m.jones@brighstoneprimary.org.uk
safeguarding@brighstoneprimary.org.uk

Our **Newsletter** is published every Friday with key information for parents and carers. You can find it on our school website:

<https://www.brighstoneprimary.org.uk/category/the-buzz/>

Contact us



If you have a **safeguarding** concern about a child outside of school hours you can call the police on 999 if you feel they are at risk of immediate harm or contact Children's Services on 0300 300 0117

Please be reminded that all children need to wear the correct PE kit on PE days.

The correct PE kit is also needed for sports clubs.

Socks and hair accessories must be in the school colours.

School Day Timings

The school day is as follows:

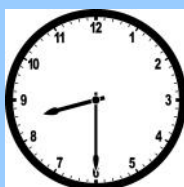
8.25am: Gates open

8.30am: School starts

3pm: School ends

3.10pm: Gates close

Many thanks.





- Tuesday 15th July: Parents evening
- Wednesday 16th - Friday 18th July: Y6 London residential
- Tuesday 22nd July: The Bee Musical whole school play (1.30pm and 6pm)
- Thursday 24th July: Whole school Forest Day (further details to follow); Summer Shindig (7pm)
- Friday 25th July: Last day of term; Y6 Leavers' Service in St Mary's Church at 1.30pm

School Term Dates for 2024-2025

Please note that the school will be closed on the following remaining days in this academic year:

Day 4: Monday 28th July 2025

Day 5: Tuesday 29th July 2025

Term dates are available on our school website.

School Term Dates for 2025-2026

Please note that the school will be closed on the following days in the next academic year:

Day 1: Monday 1st September 2025

Day 2: Tuesday 2nd September 2025

Day 3: Wednesday 3rd September 2025

Day 4: Monday 1st June 2026

Day 5: Monday 27th July 2026

Term dates are available on our school website.