

# The Buzz

## 13th June 2025



Learning and Achieving Through  
Love, Courage and Respect

Dear parents, carers and children,



"Last Friday (6th June) Ivy Bee Class visited the **Mary Rose Museum** in Portsmouth Dockyards as part of our history and English focus for this half-term. In the workshop, we discovered some of the differences between the officers and ordinary crew on board by handling lots of artefacts (identical replicas to the objects found on the Mary Rose) and getting to dress up! In the museum itself, the 4D cinema presentation gave us a sensory insight into how she was raised, while the volume of actual artefacts and the towering remains of the ship herself were utterly amazing. Some of the children got to make rubbings of Tudor insignia and just about everyone realised that they had a long way to go before they would be as strong as a Tudor archer! This was a superb day undertaken by an equally superbly behaved class. Polite, sensible and engaged, Ivy Bee were great ambassadors for our school." Mrs Sharp

"The theme for **'Kids With Bricks' club** this half term is - quite aptly - 'summertime'. Their challenge this week was to build 'ice-cream' - rather tricky with rectangular bricks, but they managed it. There were a couple of 'ice-cream that has gone splat on the floor' entries, but the most creative was certainly Quinn with his ice-cream sundae including a flake!" Mrs Sharp



This week you will have received an email detailing next year's **term dates** and the dates that the school will be closed to pupils for staff development. These are also on p14 of the Buzz, as well as on our school website.



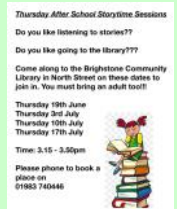
Tomorrow sees some of our children proudly representing our school with their **country dancing** at Shorwell's Midsummer Fair, held at Wolverton Manor. This is a longstanding tradition that we are delighted to continue each year. They will be performing at 3pm in the arena. Please do come along to support them if you can!

On Monday, we will be holding **auditions** for our upcoming summer production: The Bee Musical. Children in Y3-Y6 are very excitedly letting us know which parts they will be auditioning for. We can't wait to see you showcase your talents!



We are looking forward to welcoming two **French Exchange students** to Brighstone next week. They will be with us for the whole week, helping out in each class to develop their English language skills. We will certainly give them a warm Brighstone welcome!

We are pleased to share that Brighstone Community Library will be holding **Storytime Sessions** over the coming weeks. See the poster here for further information.



### Reminders:

- Please ensure that your child brings their water bottle to school every day, as well as a hat and sun cream.
- Please ensure that your child doesn't ride their bikes or scooters, or play ball games, on the school grounds at the start and end of the school day for the safety of others.

I hope you have a lovely weekend.

With best wishes,

Mrs Lennon and the Brighstone team



# Collective Worship

This week, we been focusing on Trinity - God's Never-Ending Love

Trinity begins on Trinity Sunday, which is celebrated on the Sunday after Pentecost. This year it is Sunday 15th June. The season of Trinity lasts until the start of Advent. The liturgical colour for Trinity is green because it is the season of growth.

We explored the word Trinity, and noticed that it starts with 'tri'. We thought of lots of other words that also start with 'tri'. Here are some. Can you think of any others?



How do you think this Celtic knot helps us to explore the mystery of the Trinity?



We thank you, **God**, for your unfailing and never ending love for us.

**Lord Jesus**, please give us the courage to be lights in the world.

**Holy Spirit**, please help us to have the respect to show God's love to others and the world around us.

Amen

Can you spot the Holy Trinity in our school prayer?



## School Dinners

Children in **Year R, 1 and 2** are entitled to a 'universal' **free** school meal everyday.

Children in Years 3-6 are charged at **£3.20** per day. Yoghurt, fruit, salad and jacket potatoes are available every day.

**Baguettes available on Tuesdays and Thursday - Ham, Cheese or Tuna**

The school dinner menus can now be found on pp7-8 in the Buzz, and they are always available on our website.

## Poetry Corner

### The Snail's Monologue

Shall I dwell in my shell?  
Shall I not dwell in my shell?  
Dwell in shell?  
Rather not dwell?  
Shall I not dwell,  
shall I dwell,  
dwell in shell,  
shall I shell,  
shall I shell I shall I shell I shall I...?



(The snail gets so entangled with his thoughts or rather, the thoughts run away with him so that he must postpone the decision.)

Christian Morgenstern, translated by Max Knight

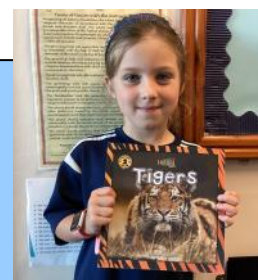
## Reading Recommendations

Each week, we include a book recommendation from a child and/or adult.

This week, Poppy S recommends *Tigers* by Tristan Walters.

I recommend this book because the pictures look like they are real. It has got photos in it. Also, there are very good drawings. I like the picture where the baby tiger goes into the water.

It tells you all about tigers. It also tells you about other animals that tigers like to eat. It has a tiger menu! It has got lots of interesting facts in it, like tigers can see better than humans at night.



## Safeguarding

If you have a concern about a child you can call the police on 999 if you feel they are at risk of immediate harm

You can contact the NSPCC:

### **Contact the NSPCC Helpline**

If you have any concerns at all about a child's safety or wellbeing, don't hesitate to contact us.

Call us or email [help@nspcc.org.uk](mailto:help@nspcc.org.uk)

**0808 800 5000**

**Find out more**

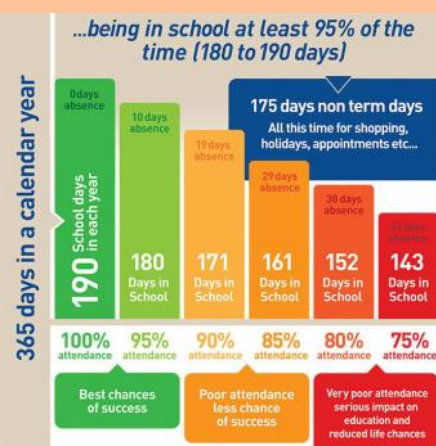
Or call children's services 0300 300 0117

## **Attendance Matters!**

Week Commencing 9th June  
(Whole school attendance target: 96.5%)

Actual Attendance: **94.25%**

Late marks this week: 7



<https://www.nhs.uk/live-well/is-my-child-too-ill-for-school/>

# Golden Book

Bumble Bee	<b>Florence</b> and <b>Arloh</b> M for being such enthusiastic writers this week. <b>Theo</b> for being really helpful around the classroom, and really enthusiastic with his learning.
Honey Bee	<b>Noah</b> for his work on fractions and extending himself within the lesson. <b>Tristan</b> for overcoming a worry and proving to himself he can do it in Maths. <b>Alice</b> for being a kind friend and always having a conscientious attitude in all she does. <b>Quinn</b> for his coding skills in computing and supporting others within these sessions.
Ivy Bee	<b>Flo</b> for the outstanding care, detail and effort she put into her Geography home learning. <b>Henry</b> for offering to help carry things for people from other classes. <b>Christopher</b> for settling back into school life so smoothly.
Sports Bee	<b>Hugh</b> for overcoming disappointment in not being able to play the cricket match due to injury and being so incredibly helpful in scoring and supporting the team.
Bee-Haviour	<b>Alyssa</b> for showing compassion and reassurance to a friend.
EARA	<b>Holly</b> for good presentation in her work and all subjects. Nominated by Helena.



# Plea for donations of: Table lamps, fairy lights, cushions and plants!

At Brighstone, we would like to develop our classrooms into calmer, more neutral 'therapeutic classrooms'.

*"Therapeutic classrooms are a new approach that redefines the traditional classroom set up. The average UK classroom is bright, cluttered, overwhelming and outdated, and is not designed around the needs of our children today."*

*Children deserve to feel comfortable, safe and inspired, especially when we know there has been a rise in the numbers of children struggling with their social, emotional and mental health. Teachers up and down the country are reporting increases in school refusal, dysregulated behaviours, disengagement and low social skills. Making changes to the classroom can help."*

## What is a therapeutic classroom?

*"Therapeutic classrooms are welcoming, safe, inviting environments that cultivate learning through their design. They calm stress hormones and increase feelings of emotional safety, whilst meeting the emotional and mental health needs of the children. Therapeutic classrooms include calm spaces and flexible seating in every room as standard, and allow children to work where they feel most comfortable."*

*They take into consideration space, lighting, comfortability, accessibility, inclusivity and connective learning. Therapeutic classrooms are inspiring places that children want to be in and are underpinned by science. "*

<https://www.tpctherapy.co.uk/therapeutic-classrooms/>

To start this process, we are looking to introduce **table lamps** and **fairy lights** (so we can turn off or reduce the use of the bright overhead lighting), **cushions** (to make comfy seating areas) and **plants**.

As budget is tight, we are wondering if you have, or know of anyone who has, any spare table lamps, cushions, fairy lights and plants that you no longer need. To minimise the use of bright colours, ideally these new furnishings need to be in neutral colours.

Please contact the school office if you have anything that you would like to donate.

**Thank you!**









Brighstone School Association

# Plant Sale

**Our plant sale tray will be  
outside the main reception  
from Monday 16<sup>th</sup> June.**

**£1 suggested donation per plant.**

**If you have any spare  
plants to donate, please  
just add them to the tray.**

## BSA ASTRA RECYCLING BIN

### **We take...**

Clothes  
Shoes  
Bed Linen  
Accessories  
(Such as belts, hats & handbags)  
Soft Toys

### **We can't take...**

Duvets or Cushions  
Off Cuts  
Carpet or Curtains

Find our recycling bin at the front entrance of the school.



*Parents,  
**Family members**  
& friends of Brighstone  
Primary School*

**Does your place of  
work offer the Match  
Funding Scheme?**

Get in touch with us if your employers could  
help our BSA fundraisers via email at  
[brighstoneschoolassoc@gmail.com](mailto:brighstoneschoolassoc@gmail.com)

BRIGHSTONE CE PRIMARY SCHOOL  
GOVERNORS PRESENT

# SUMMER SHINDIG

THURSDAY 24<sup>TH</sup> JULY

7PM - 10:30PM

SCHOOL FIELD  
WARNES LANE  
BRIGHSTONE

JOIN US FOR AN EVENING OF LIVE MUSIC,  
DANCING AND GREAT FOOD.  
RAISING FUNDS FOR  
BRIGHSTONE CE PRIMARY SCHOOL

ADULT TICKETS £10 | TEEN TICKETS £5  
(UNDER 12S GO FREE)

ALL UNDER 18S MUST BE ACCOMPANIED BY AN ADULT

SCAN THE QR  
CODE TO BOOK



IF YOU HAVE ANY PROBLEMS BOOKING PLEASE CONTACT  
EMILY ON [E.RUFIAN@BRIGHSTONEPRIMARY.ORG.UK](mailto:E.RUFIAN@BRIGHSTONEPRIMARY.ORG.UK)

[HTTPS://BRIGHSTONE-CE-PRIMARY-SCHOOL-GOVERNORS-PRESENT.SQUARE.SITE/](https://brighstone-ce-primary-school-governors-present.square.site/)





# SPRING/SUMMER 2025 MENU

## WEEK 2

W/C: 28/04/2025, 19/05/2025, 16/06/2025, 07/07/2025, 28/07/2025,  
15/09/2025, 06/10/2025

		MONDAY	TUESDAY	WEDNESDAY	THURSDAY	FRIDAY
HOT DISHES	OPTION 1	Macaroni Cheese	BBQ Chicken Pizza Served with Potato Wedges	Roast Gammon Served with Roast Potatoes and Gravy	Beef Bolognese Served with Wholewheat Pasta	Fish Fingers Served with Chips
	OPTION 2	Veggie Meatballs in Tomato Sauce with Wholegrain Rice	Meatless Feast Cheesy Pizza Served with Potato Wedges	Sweet Potato, Chickpea and Herb Roast Served with Roast Potatoes and Gravy	Vegetable Fajita Wrap Served with Wholegrain Rice	Quorn Dippers Served with Chips
	OPTION 3	Tomato Pasta Fresh, Homemade Tomato Sauce with Pasta	Tomato Pasta Fresh, Homemade Tomato Sauce with Pasta	Tomato Pasta Fresh, Homemade Tomato Sauce with Pasta	Tomato Pasta Fresh, Homemade Tomato Sauce with Pasta	Tomato Pasta Fresh, Homemade Tomato Sauce with Pasta
HOT DISHES ARE SERVED WITH TWO VEGETABLES AND FRESHLY BAKED BREAD						
DELI DISHES	OPTION 4	Jacket Potato with a Choice of Toppings	Ham or Tuna Baguette	Jacket Potato with a Choice of Toppings	Ham or Tuna Baguette	Jacket Potato with a Choice of Toppings
	OPTION 5	No Baguette	Cheese Baguette	No Baguette	Cheese Baguette	No Baguette
DELI DISHES ARE SERVED WITH MIXED SALAD						
DESSERT		Apple and Golden Syrup Cake	Strawberry Jelly	Flapjack with Fruit	Chocolate Ice Cream	Lemon Cake



**AVAILABLE DAILY**  
Fresh fruit, salad, yoghurt and water



**Chartwells**  
Schools

Vegetarian 
 Vegan 
 Oily Fish 
 Wholegrain 
 Fruity! 
 Nutritionist's Choice

Our menu is subject to change. Please be assured that all notified medical diets and allergy requirements will be safely catered for.

Menu\_21\_202407

# SPRING/SUMMER 2025 MENU

## WEEK 3

W/C: 05/05/2025, 02/06/2025, 23/06/2025, 14/07/2025, 01/09/2025,  
22/09/2025, 13/10/2025

		MONDAY	TUESDAY	WEDNESDAY	THURSDAY	FRIDAY
HOT DISHES	OPTION 1	Cheese and Tomato Pizza Served with Wholewheat Pasta	Sausage Hot Dog Served with Potato Wedges	Roast Chicken Served with Roast Potatoes and Gravy	Oat Crusted Chicken Served with Wholegrain Rice	Fish Fingers Served with Chips
	OPTION 2	Chilli No Carne With Crispy Tortilla Served with Wholegrain Rice	Veggie Sausage Hot Dog Served with Potato Wedges	Roast Quorn Served with Roast Potatoes and Gravy	Meatless Shepherd's Pie Served with Gravy	Quorn Dippers Served with Chips
	OPTION 3	Tomato Pasta Fresh, Homemade Tomato Sauce with Pasta	Tomato Pasta Fresh, Homemade Tomato Sauce with Pasta	Tomato Pasta Fresh, Homemade Tomato Sauce with Pasta	Tomato Pasta Fresh, Homemade Tomato Sauce with Pasta	Tomato Pasta Fresh, Homemade Tomato Sauce with Pasta
HOT DISHES ARE SERVED WITH TWO VEGETABLES AND FRESHLY BAKED BREAD						
DELI DISHES	OPTION 4	Jacket Potato with a Choice of Toppings	Ham or Tuna Baguette	Jacket Potato with a Choice of Toppings	Ham or Tuna Baguette	Jacket Potato with a Choice of Toppings
	OPTION 5	No Baguette	Cheese Baguette	No Baguette	Cheese Baguette	No Baguette
DELI DISHES ARE SERVED WITH MIXED SALAD						
DESSERT		Flapjack	Peach and Ginger Pudding	Oatie Cookie with Fruit	Vanilla Ice Cream	Crunchy Chocolate Mousse



**AVAILABLE DAILY**  
Fresh fruit, salad, yoghurt and water



**Chartwells**  
Schools

Vegetarian 
 Vegan 
 Oily Fish 
 Wholegrain 
 Fruity! 
 Nutritionist's Choice

Our menu is subject to change. Please be assured that all notified medical diets and allergy requirements will be safely catered for.

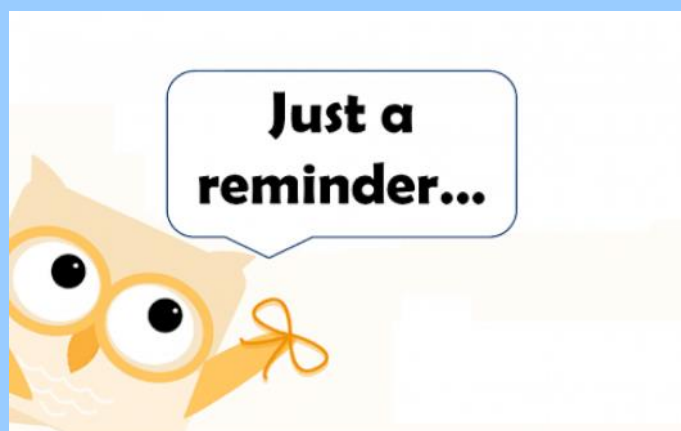
Menu\_21\_202407

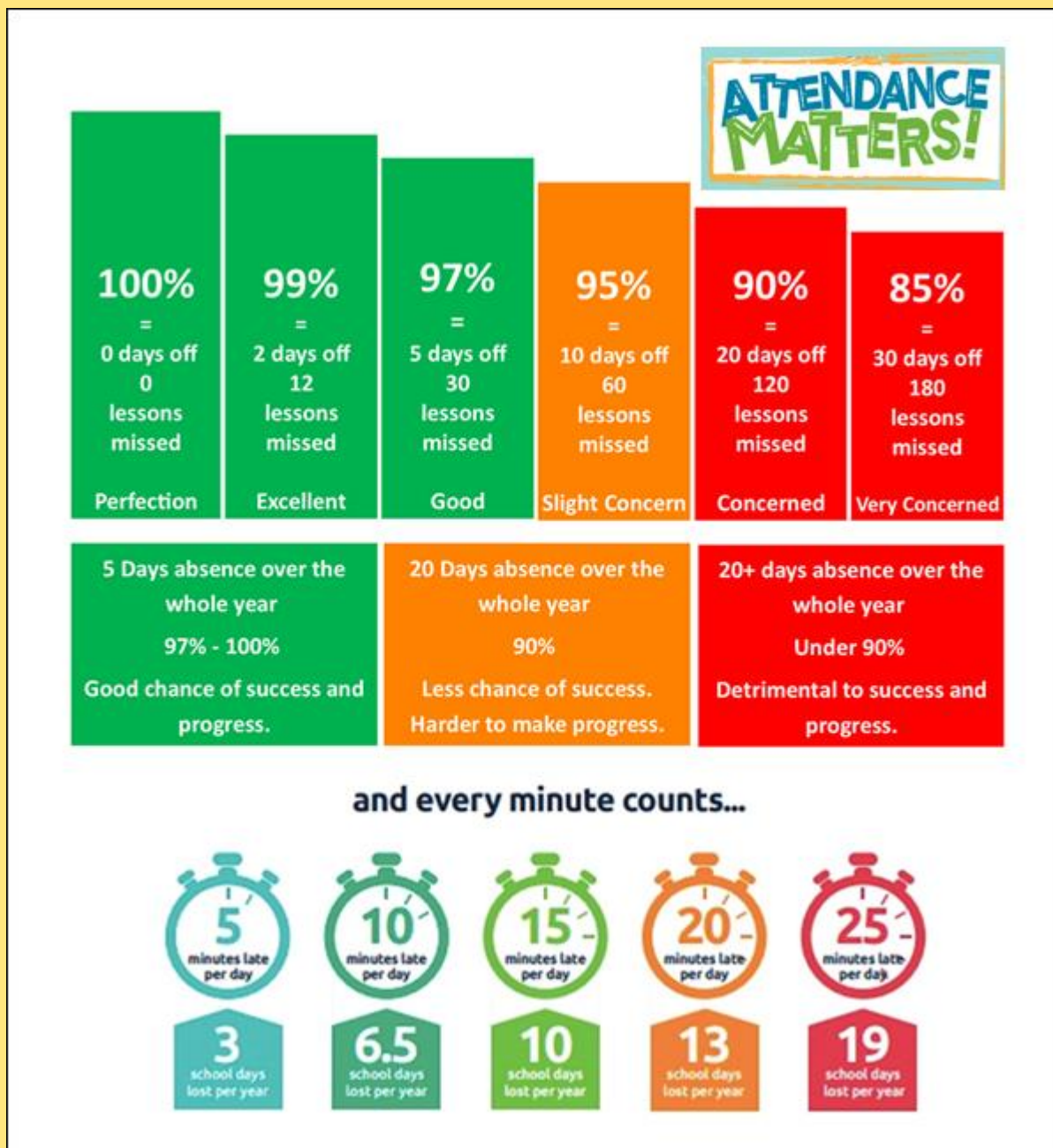


# Reminders

- PE Kit is navy blue top/jumper/hoodie with navy blue bottoms - **Branded items are not permitted**
- All hair accessories, socks, shoes and trainers must be in the school colours: navy blue, grey, black or white (no novelty socks)
- All long hair must be tied back (pony tail, bun, plaits etc...) to avoid the spreading of head lice
- No jewellery to be worn other than stud earrings, which must be removed or taped over on PE days
- Gates open at 8.25am and are locked at 8.30am, and in the afternoon, gates are opened at 2.55pm and locked at 3.10pm
- **As teachers are busy welcoming and supervising children first thing in the morning, please could all messages be given to Mrs Pelosi in the office, who will then pass them on to the teacher**
- Only **water** is allowed in drinks bottles, and snacks must be fruit only

Thank you!





At Brighstone Primary School we have high expectations for our children. This begins with attendance and punctuality as they are important life skills to learn.

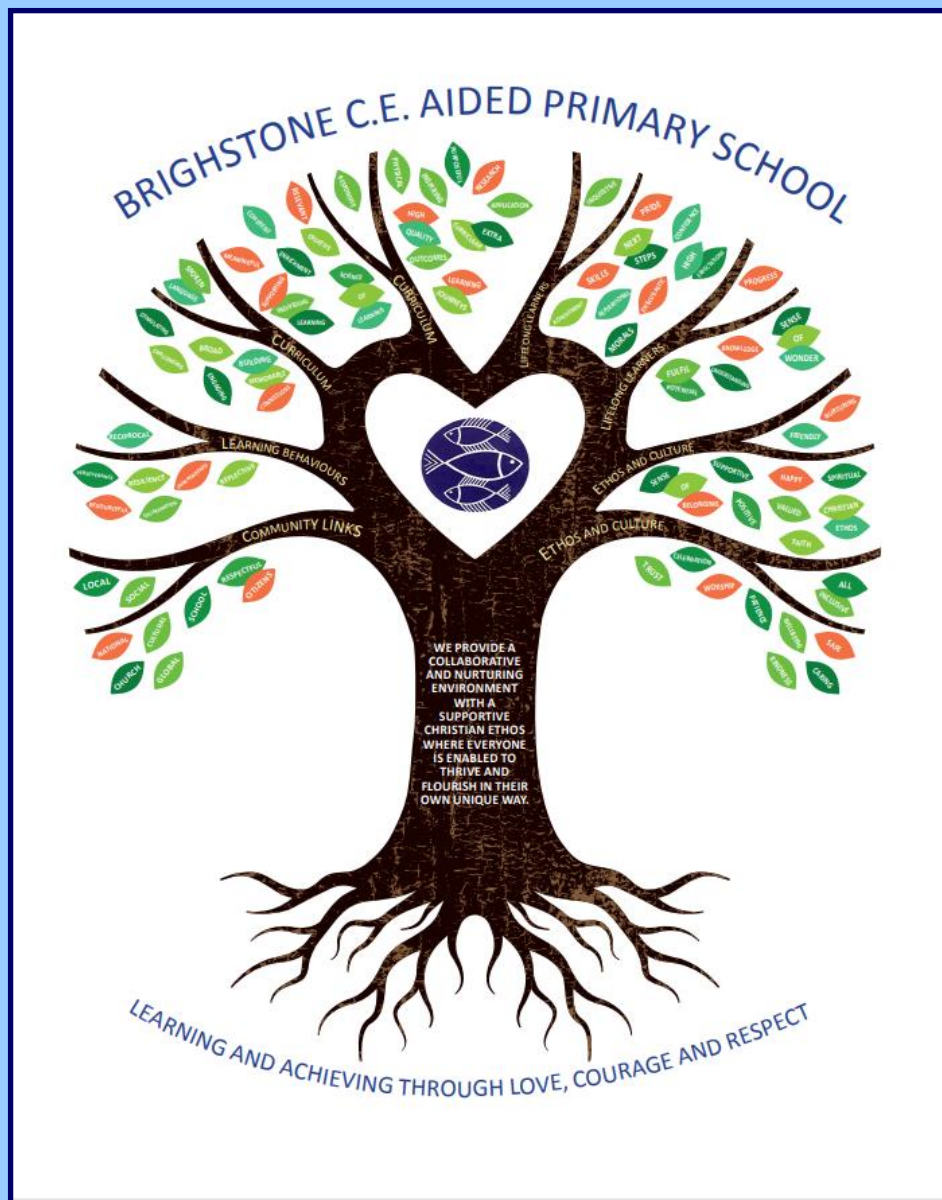
Good school attendance habits are best started early. Children learn from those around them and you as parents/carers set the standards and expectations for your child. Lateness has a negative impact; being late may disrupt already settled children and lessons, affect achievement and embarrass, worry or upset your child. We understand that there may be an occasional unavoidable instance where you are late, but if it happens frequently, please let us know if there may be something that we can do to help.

What to do if your child is unwell:

Check the NHS Guidance: <https://www.nhs.uk/live-well/is-my-child-too-ill-for-school/>

You should notify the school office before 9am every morning your child is unable to attend due to illness. You can either telephone on 740285 or email on [office@brighstoneprimary.org.uk](mailto:office@brighstoneprimary.org.uk). Telephone calls must be followed up in writing to authorise the (illness) absence.

# Our Vision Statement



A vision statement 'seeks to inspire and give direction to all stakeholders (staff, children, parents, governors and the wider community). It is an aspirational description of what an organisation would like to achieve or accomplish in the mid-term or long-term future. It is intended to serve as a clear guide for choosing current and future courses of action'.

Our vision statement works alongside our mission statement 'Learning and Achieving Through Love, Courage and Respect', which includes our values, to reflect and guide our culture, ethos and decision making. This is also on our website.

As a school, in 2020 we worked together with a range of stakeholders to write our vision statement, and we decided to create a visual vision statement to make it stand out and be memorable. Each part of the image has been carefully chosen to represent our school:

Our values, as part of the mission statement (tagline), are the roots and foundation that feed and nourish our school.

The vision statement is the main body (trunk) that guides all our actions.

The branches reflect the different aspects of life in our school.

The leaves show examples of how these aspects are shown.

The school logo in the centre of the tree represents the Christian ethos that is at the heart of everything we do.





## Respect Charter

### at Brighstone CE Aided Primary School

At Brighstone CE Aided Primary School we believe staff, parents and children are entitled to a safe and protective environment in which to learn and work. We strive to ensure that our school offers a warm and nurturing environment. All members of the school community and visitors should demonstrate mutual respect, to feel safe, work together and to use restorative approaches as the foundation of our practice. Any behaviour that may lead to feelings of harassment, alarm or distress to members of our community, will not be tolerated and action taken.

#### Expectations

- That all adults set a good example to children at all times, showing them how to get along with all members of the school and the wider community.
- That no one - staff, governors, parents, carers, volunteers or children - be subjected to abusive behaviour or any form of threats from visitors on the school premises.
- That physical attacks and threatening behaviour, abusive or insulting language verbal or written (including on social media), to staff, governors, parents, carers, volunteers, children and other users of the school premises will not be tolerated and may lead to a ban from school premises and/or police action.

#### Types of behaviour that are considered serious and unacceptable

This is not an exhaustive list but seeks to provide illustrations of such behaviour:

- Shouting, either in person or over the telephone
- Speaking in an aggressive/threatening tone
- Physically intimidating, e.g. standing very close
- The use of aggressive hand gestures/exaggerated movements
- Physical threats
- Shaking or holding a fist towards another person
- Swearing and name calling
- Pushing
- Slapping, punching, hitting or kicking
- Racist, homophobic or other hateful behaviour
- Sexist comments or sexual innuendo
- Disrespecting religion or belief
- Inappropriate communications (posting on Social Networking sites, emails or letters, etc.) which could bring the school into disrepute or be deemed as bullying, harassment and/or a hate-related

The school reserves the right to take any necessary actions to ensure that members of the school community are not subjected to any form of abuse in line with policy and procedure. If you choose to engage in these behaviours you may be asked to leave the site or the police may be called.

**Thank you for your understanding and support**

If your message is **urgent** or about **attendance**

contact Mrs Pelosi in the **office**:

**01983 740285**

office@brighstoneprimary.org.uk

Office Hours 8am - 4pm

If you would like to speak with the **Headteacher**

Mrs Lennon, you can find her at the school gate every morning or you can call 740285 to make an appointment with her



For **general enquiries** you can call or email the office, text the school messaging service or send a message to our school **Facebook** page: <https://www.facebook.com/BrighstoneCEPrimarySchool>

*Our Facebook page is open so you do not need a personal account to view it*

If you have concerns about your child's **learning** and progress, email the class teacher in the first instance and allow at least 1 working day for a reply:

Years R, 1 & 2 - teacher.bumblebee@brighstoneprimary.org.uk

Years 3 & 4 - teacher.honeybee@brighstoneprimary.org.uk

Years 5 & 6 - teacher.ivybee@brighstoneprimary.org.uk

If you have concern regarding **safeguarding** or your **child's mental health and wellbeing** please contact Mrs Jones. You can speak to her on the playground every morning, call into the school office or email m.jones@brighstoneprimary.org.uk  
safeguarding@brighstoneprimary.org.uk

Our **Newsletter** is published every Friday with key information for parents and carers. You can find it on our school website:

<https://www.brighstoneprimary.org.uk/category/the-buzz/>

## Contact us



If you have a **safeguarding** concern about a child outside of school hours you can call the police on 999 if you feel they are at risk of immediate harm or contact Children's Services on 0300 300 0117

Please be reminded that all children need to wear the correct PE kit on PE days.

The correct PE kit is also needed for sports clubs.

Socks and hair accessories must be in the school colours.

### School Day Timings

The school day is as follows:

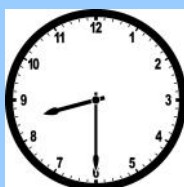
8.25am: Gates open

8.30am: School starts

3pm: School ends

3.10pm: Gates close

Many thanks.



## Key dates this year

- Saturday 14th June: Shorwell Midsummer Fair - country dancing
- Tuesday 24th June: Bumble Bee trip to Osborne House
- Friday 27th June: Sports Day
- Saturday 5th July: Mardi Gras parade in Ryde
- Tuesday 8th July: Transition Day
- Friday 11th July: Y6 Leavers' Service in Portsmouth; Summer Sizzler
- Tuesday 15th July: Parents evening
- Wednesday 16th -
- Friday 18th July: Y6 London residential
- Tuesday 22nd July: The Bee Musical whole school play (1.30pm and 6pm) - further details to follow
- Thursday 24th July: Whole school Forest Day (further details to follow); Summer Shindig (7pm)
- Friday 25th July: Last day of term; Y6 Leavers' Service in St Mary's Church at 1.30pm

This list is regularly updated.

### School Term Dates for 2024-2025

Please note that the school will be closed on the following remaining days in this academic year:

Day 4: Monday 28th July 2025

Day 5: Tuesday 29th July 2025

Term dates are available on our school website.

### School Term Dates for 2025-2026

Please note that the school will be closed on the following days in the next academic year:

Day 1: Monday 1st September 2025

Day 2: Tuesday 2nd September 2025

Day 3: Wednesday 3rd September 2025

Day 4: Monday 1st June 2026

Day 5: Monday 27th July 2026

Term dates are available on our school website.

