

The Buzz

9th May



Learning and Achieving Through
Love, Courage and Respect

Dear parents, carers and children,

The children made us all very proud yesterday on the **80th anniversary of VE day**. They shared some very thoughtful comments in our VE day Collective Worship, and talked about family members who were involved in WWII. They talked about the importance of learning from the past, and the importance of peace. We thanked those who fought in WWII so we could have our freedom, while also thinking about those who are currently involved in and impacted by wars.

At lunchtime, we enjoyed a VE day picnic on the field in the sunshine, surrounded by bunting and flags, and listening to music from the 1940s. It was lovely to see preschool also enjoying their VE day picnic at the same time! (See Facebook for more photos.)



I am delighted to share the news today that our school will once again be represented at the **Inter-School Teams Dressage Competition** in June, by a group of our children and their ponies. If you are interested in taking part in this, please do let us know and we can pass on your interest to the parents who are putting together the Brighstone team. See p7 of this week's Buzz for more information. Thank you to the group of parents who are organising our team.



We have received the following message from the **Local Authority** that we have been asked to share: *Op ANGIOLINI is Hampshire and IOW response to dealing with non-contact sexual offences specifically - this includes exposure, voyeurism, up skirting and out-raging public decency. We want to send an alert to schools to ensure that our messaging is clear; that any offences of this nature seen by school staff, pupils, parents or members of the public are reported to police immediately without delay. We also want to encourage reporting of incidents where people are acting suspiciously around school settings, but have not overtly committed a crime. We do not want any of our school community to be made to feel uncomfortable by anyone acting in this manner. With the summer coming up, we would encourage schools to re-emphasise their school safety messaging around walking to and from school alone/in remote areas again to pupils and parents and ensure parents, school staff and pupils alike feel confident in reporting to police if needed. Please also take a refreshed look at our personal safety advice on our crime prevention pages: <https://www.hampshire.police.uk/cp/crime-prevention/personal-safety-how-to-stay-safe/>*



Our Y6 pupils will be taking part in **SATs** next week. We wish you all the very best of luck. You'll be great!

Just a reminder that there will be an **SEN consultation drop-in session** on Tuesday 13th May at 3.30pm - 4.30pm in the school hall. This will be an opportunity to speak with Council Officers and ask any questions that you may have.



Tomorrow sees the fabulous **Wolverton Folk and Blues Fair**, where the BSA will be running the cake stall again, to help raise funds for the school. A huge thank you to all who have baked cakes and cookies to sell. They look delicious! We look forward to seeing you there.

Good luck to everyone who is taking part in **Walk the Wight** on Sunday. Give each other a wave and encourage one another up all those hills!



I hope everyone has a lovely weekend. With best wishes, Mrs Lennon and the Brighstone team

Collective Worship

This week, we been focusing on Friendship: Supporting one another

We are thinking about friendship and how friends can be relied upon and will do anything to help each other. We listened to and acted out the story of when a group of friends took their paralysed friend to be healed by Jesus. The friends did everything they could to get their friend there, including making a hole in the roof and lowering him down because the house was so crowded!



We made friendship paper chains to show how we can all be linked together and how we can all support one another.

How do you support your friends in difficult times?

A Prayer for Good Friendship

Let our friendships be strong, Oh Lord,
That they may become a blessing to others.
Let our friendships be open, Oh Lord,
That they may be a haven for others.
Let our friendships be gentle, Oh Lord,
That they may bring peace to others.
For Jesus' sake,
Amen

By Rt Revd Christopher Herbert



School Dinners

Children in **Year R, 1 and 2** are entitled to a 'universal' **free** school meal everyday.

Children in Years 3-6 are charged at **£3.20** per day. Yoghurt, fruit, salad and jacket potatoes are available every day.

Baguettes available on Tuesdays and Thursday - Ham, Cheese or Tuna

Week 1	Monday	Tuesday	Wednesday	Thursday	Friday
Option 1	Ch & Tom Pizza	BBQ Chicken & Rice	Roast Pork	Beef Burger	Fish & Chips
Option 2	Veggie Tart	Macaroni Cheese	Veggie Bake	Quorn Burger	Veggie fingers
Dessert	Choc Brownie	Jelly	Banoffee Pie	Ice Cream	Biscuit & Fruit

Poetry Corner

The Tickle Rhyme

"Who's that tickling my back?"
said the wall.
"Me," said a small
Caterpillar. "I'm learning
To crawl."

Ian Serrailier



Only My Opinion

Is a caterpillar ticklish?
Well, it's always my belief
That he giggles, as he wiggles
Across a hairy leaf.

Monica Shannon



Reading Recommendations

Each week, we include a book recommendation from a child and/or adult.

This week, Maddie recommends Rainbow Magic series by Daisy Meadows.



I recommend these books because they are not too long and they are really fun to read. There are up to 300 books in the series. There are six chapters and they are not violent if little children want to read them as bedtime stories. They have lots of types of different books, including Rainbow Fairies, Ocean Fairies, School Fairies, Party Fairies, Jewel Fairies, and sometimes they can have 3-in-1 in one book.

Safeguarding

If you have a concern about a child you can call the police on 999 if you feel they are at risk of immediate harm

You can contact the NSPCC:

Contact the NSPCC Helpline

If you have any concerns at all about a child's safety or wellbeing, don't hesitate to contact us.

Call us or email help@nspcc.org.uk

0808 800 5000

Find out more

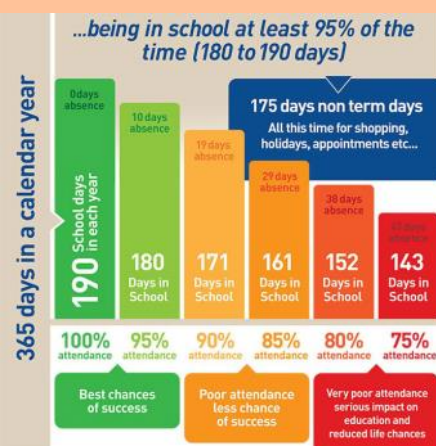
Or call children's services 0300 300 0117

Attendance Matters!

Week Commencing 6th May
(Whole school attendance target: 96.5%)

Actual Attendance: 95.68%

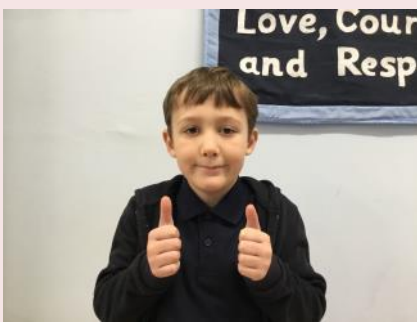
Late marks this week: 7



<https://www.nhs.uk/live-well/is-my-child-too-ill-for-school/>

Golden Book

Bumble Bees	Henrietta for lots of hard work this week, especially with her writing. Molly for always producing neat Maths work to be proud of. Theo for calmly leading a small group with a Maths problem.
Honey Bees	Noah for his hard work and concentration during our fractions work in Maths. Quinn for his motivation in all of his work and taking pride in his work with his beautiful presentation.
Ivy Bees	Freddie K for excellent support of other children when using Scratch programming. Oskar P and Martha for their work on multiplication - independently selecting the best method to solve each calculation with. Ila for her perseverance in mastering the long multiplication method.
Bee-Haviour	Ralph for being kind and thoughtful and looking out for his friends.
Sports Bee	Ila for showing perseverance in cricket this week and really developing her skills.



Plea for donations of: Table lamps, fairy lights, cushions and plants!

At Brighstone, we would like to develop our classrooms into calmer, more neutral 'therapeutic classrooms'.

"Therapeutic classrooms are a new approach that redefines the traditional classroom set up. The average UK classroom is bright, cluttered, overwhelming and outdated, and is not designed around the needs of our children today."

Children deserve to feel comfortable, safe and inspired, especially when we know there has been a rise in the numbers of children struggling with their social, emotional and mental health. Teachers up and down the country are reporting increases in school refusal, dysregulated behaviours, disengagement and low social skills. Making changes to the classroom can help."

What is a therapeutic classroom?

"Therapeutic classrooms are welcoming, safe, inviting environments that cultivate learning through their design. They calm stress hormones and increase feelings of emotional safety, whilst meeting the emotional and mental health needs of the children. Therapeutic classrooms include calm spaces and flexible seating in every room as standard, and allow children to work where they feel most comfortable."

They take into consideration space, lighting, comfortability, accessibility, inclusivity and connective learning. Therapeutic classrooms are inspiring places that children want to be in and are underpinned by science. "

<https://www.tpctherapy.co.uk/therapeutic-classrooms/>

To start this process, we are looking to introduce **table lamps** and **fairy lights** (so we can turn off or reduce the use of the bright overhead lighting), **cushions** (to make comfy seating areas) and **plants**.

As budget is tight, we are wondering if you have, or know of anyone who has, any spare table lamps, cushions, fairy lights and plants that you no longer need. To minimise the use of bright colours, ideally these new furnishings need to be in neutral colours.

Please contact the school office if you have anything that you would like to donate.

Thank you!





THANK YOU!



Well what a great spread of cakes, biscuits and treats we received today!! Thank you so much for everyone's efforts and contributions that were sent into school today! We hope the crowds at Wolverton Folk and Blues Festival will be fuelled through their afternoon by these treats!

Given this wonderful table full, it may be worth noting our second event now, where we will be holding another non uniform day in exchange for delicious treats on Friday 23rd May for Northcourt House Open Gardens.

Wolverton Folk & Blues

SATURDAY 10TH MAY 2025 • 11.30 AM - 8.00 PM
at Wolverton Manor, Shorwell, Isle of Wight. PO30 3JS

West Weston's Bluesonics • Stompin' Dave Electric Trio
Piskey Led • The Hanging Baskets • Something About Mondays
The Damien Paul Band • The Bohemians • Chasing Scarlett • The Ohmz
East Cowes Shanty • The RUG Band • Lee Signey • Razor Jake
Ruby • Hugh Wright sings Dylan • more acts to be announced..!

Family Friendly Kids Activities Local Food Stalls Beer Tent Tea Tent

TICKETS: £12 in advance, £15 on the gate. Under 12's FREE

Available from: The Village Shop, Brighstone, Briddlesford Farm Shop,
Waterstones, Newport, Orchard Brothers, Freshwater Bay. Sponsored by:

f WolvertonFolkandBlues e: iwfoodnfolk@gmail.com
IN AID OF CANCER SUPPORT AND BRIGHSTONE PRIMARY SCHOOL



Brighstone School Association

Time to get growing

Are you sowing your seeds yet? Could you plant a few extra for us? We will be holding our plant sale after the May half term and would welcome any donations.

*Parents,
Family members
& friends of Brighstone
Primary School*

**Does your place of
work offer the Match
Funding Scheme?**

Get in touch with us if your employers could help our BSA fundraisers via email at brighstoneschoolassoc@gmail.com

BSA ASTRA RECYCLING BIN

We take...

- Clothes
- Shoes
- Bed Linen
- Accessories
- (Such as belts, hats & handbags)
- Soft Toys

We can't take...

- Duvets or Cushions
- Off Cuts
- Carpet or Curtains

Find our recycling bin at the front entrance of the school.



INTERSCHOOL TEAM DRESSAGE

Thursday 19th June 2025

Little Kennerley Farm, Godshill

By kind permission of Dawn and Hayley Webster



It will be run over four sections:

Primary Schools	Pony club D Level Test or BD Prelim Test 1
Secondary Schools	BD Prelim Test 2 or BD Novice Test 2

The entry fee is £8 per rider. Entries need to be sent to Karen Begley at Carisbrooke College. Payment by cheque, cash or bacs . Payment by cheque, cash or Bacs. Bacs payments to Account name: School Equestrian Competition, Number: 21359423, Sort code: 54-10-34

It is open to teams of 4 (with best three scores counting) and individuals.

Entries close on Wednesday 4th June. Times will be emailed to schools and put on the Isle of Wight Horse Community Facebook Page on Wednesday 11th June

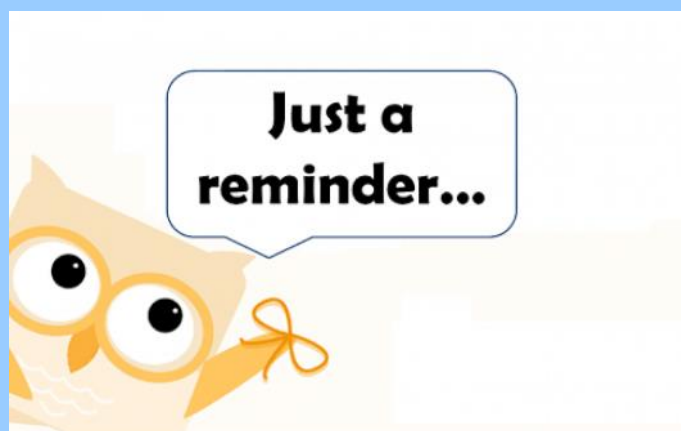
A representative of the school will need to accompany the team and be responsible for them during the competition. Please make sure that your school has insurance that will cover extra curricular activities (including horse riding) .

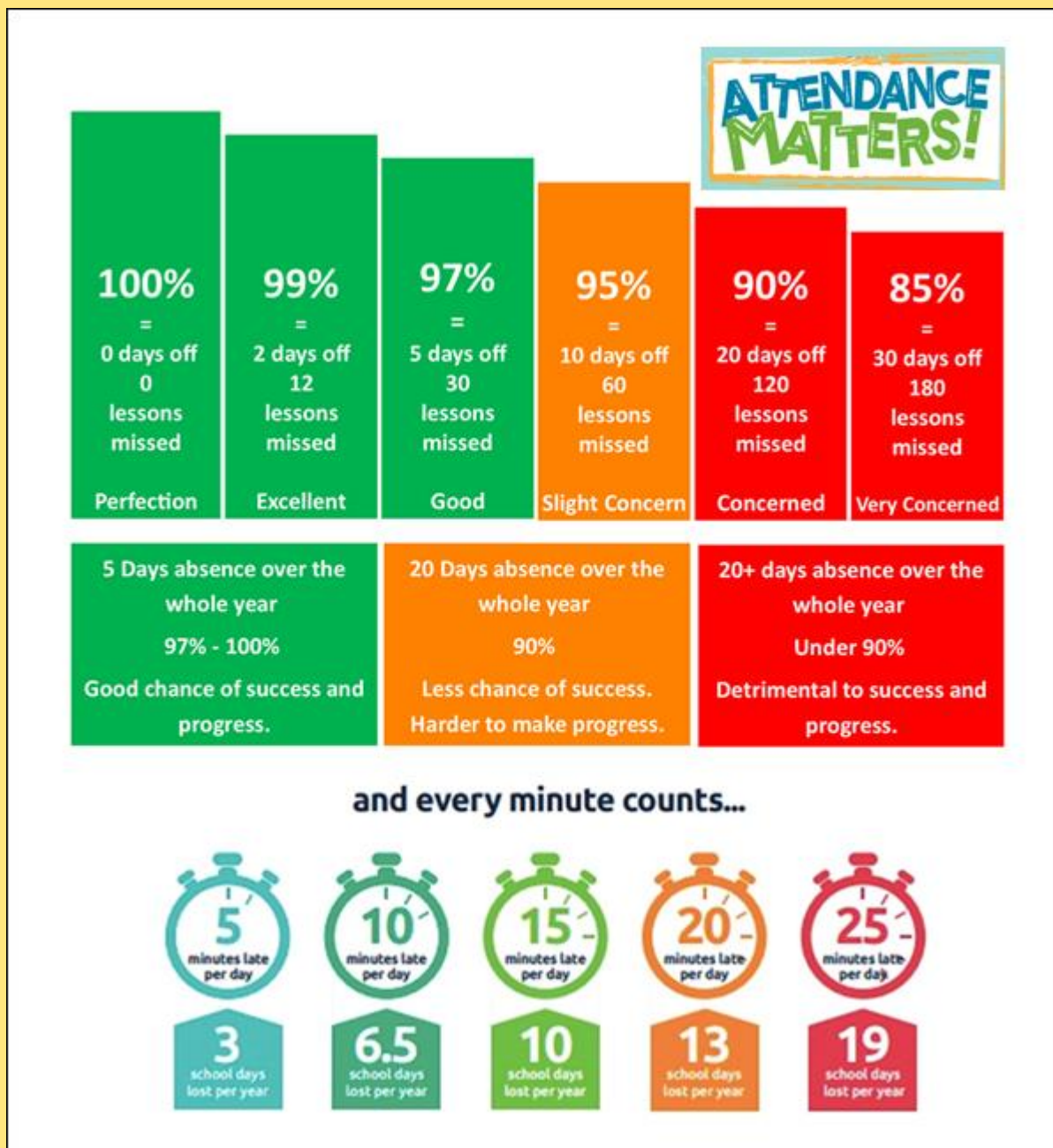
If you require any further information please contact Karen Begley at Carisbrooke College 524651 or karen.begley@carisbrooke.iow.sch.uk

Reminders

- PE Kit is navy blue top/jumper/hoodie with navy blue bottoms - **Branded items are not permitted**
- All hair accessories, socks, shoes and trainers must be in the school colours: navy blue, grey, black or white (no novelty socks)
- All long hair must be tied back (pony tail, bun, plaits etc...) to avoid the spreading of head lice
- No jewellery to be worn other than stud earrings, which must be removed or taped over on PE days
- Gates open at 8.25am and are locked at 8.30am, and in the afternoon, gates are opened at 2.55pm and locked at 3.10pm
- **As teachers are busy welcoming and supervising children first thing in the morning, please could all messages be given to Mrs Pelosi in the office, who will then pass them on to the teacher**
- Only **water** is allowed in drinks bottles, and snacks must be fruit only

Thank you!





At Brighstone Primary School we have high expectations for our children. This begins with attendance and punctuality as they are important life skills to learn.

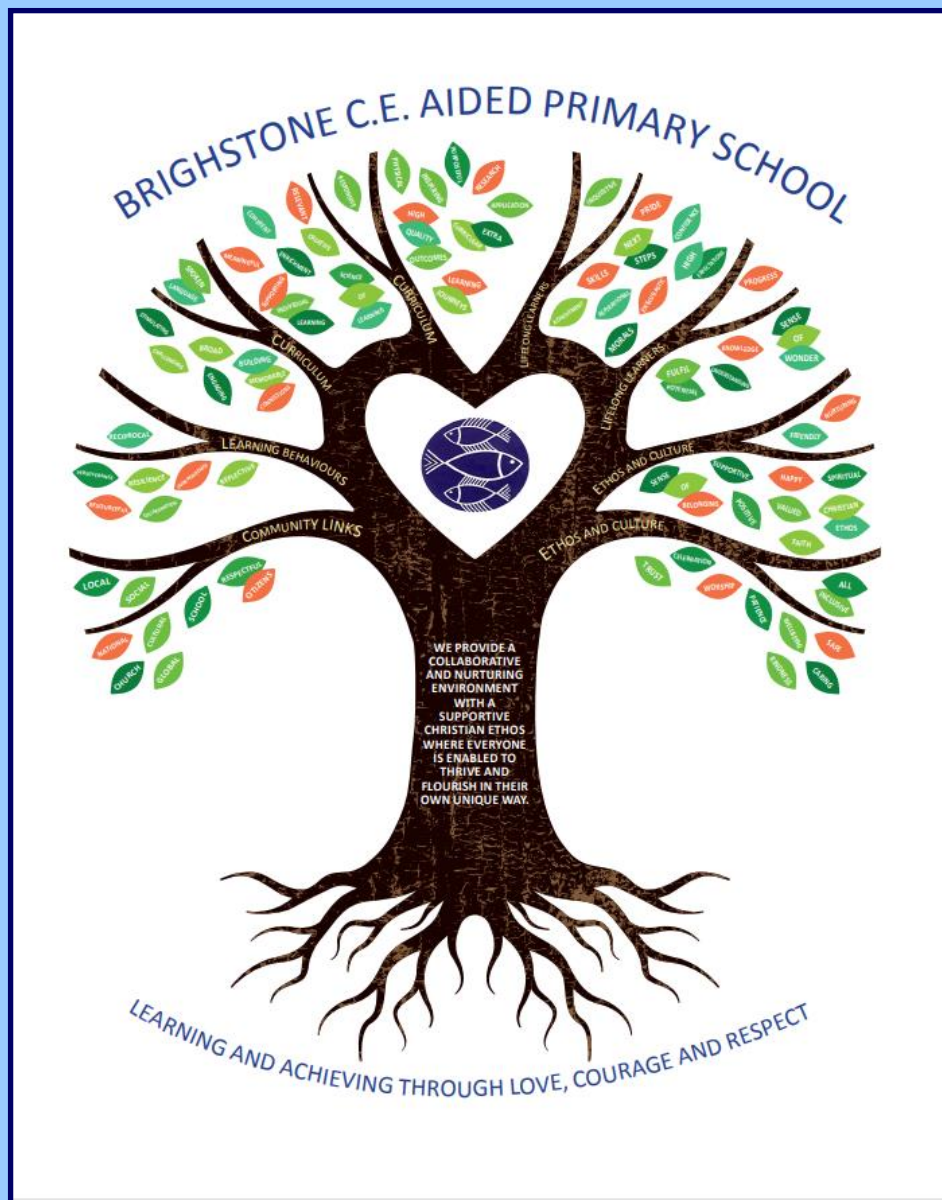
Good school attendance habits are best started early. Children learn from those around them and you as parents/carers set the standards and expectations for your child. Lateness has a negative impact; being late may disrupt already settled children and lessons, affect achievement and embarrass, worry or upset your child. We understand that there may be an occasional unavoidable instance where you are late, but if it happens frequently, please let us know if there may be something that we can do to help.

What to do if your child is unwell:

Check the NHS Guidance: <https://www.nhs.uk/live-well/is-my-child-too-ill-for-school/>

You should notify the school office before 9am every morning your child is unable to attend due to illness. You can either telephone on 740285 or email on office@brighstoneprimary.org.uk. Telephone calls must be followed up in writing to authorise the (illness) absence.

Our Vision Statement



A vision statement 'seeks to inspire and give direction to all stakeholders (staff, children, parents, governors and the wider community). It is an aspirational description of what an organisation would like to achieve or accomplish in the mid-term or long-term future. It is intended to serve as a clear guide for choosing current and future courses of action'.

Our vision statement works alongside our mission statement 'Learning and Achieving Through Love, Courage and Respect', which includes our values, to reflect and guide our culture, ethos and decision making. This is also on our website.

As a school, in 2020 we worked together with a range of stakeholders to write our vision statement, and we decided to create a visual vision statement to make it stand out and be memorable. Each part of the image has been carefully chosen to represent our school:

Our values, as part of the mission statement (tagline), are the roots and foundation that feed and nourish our school.

The vision statement is the main body (trunk) that guides all our actions.

The branches reflect the different aspects of life in our school.

The leaves show examples of how these aspects are shown.

The school logo in the centre of the tree represents the Christian ethos that is at the heart of everything we do.



Respect Charter

at Brighstone CE Aided Primary School

At Brighstone CE Aided Primary School we believe staff, parents and children are entitled to a safe and protective environment in which to learn and work. We strive to ensure that our school offers a warm and nurturing environment. All members of the school community and visitors should demonstrate mutual respect, to feel safe, work together and to use restorative approaches as the foundation of our practice. Any behaviour that may lead to feelings of harassment, alarm or distress to members of our community, will not be tolerated and action taken.

Expectations

- That all adults set a good example to children at all times, showing them how to get along with all members of the school and the wider community.
- That no one - staff, governors, parents, carers, volunteers or children - be subjected to abusive behaviour or any form of threats from visitors on the school premises.
- That physical attacks and threatening behaviour, abusive or insulting language verbal or written (including on social media), to staff, governors, parents, carers, volunteers, children and other users of the school premises will not be tolerated and may lead to a ban from school premises and/or police action.

Types of behaviour that are considered serious and unacceptable

This is not an exhaustive list but seeks to provide illustrations of such behaviour:

- Shouting, either in person or over the telephone
- Speaking in an aggressive/threatening tone
- Physically intimidating, e.g. standing very close
- The use of aggressive hand gestures/exaggerated movements
- Physical threats
- Shaking or holding a fist towards another person
- Swearing and name calling
- Pushing
- Slapping, punching, hitting or kicking
- Racist, homophobic or other hateful behaviour
- Sexist comments or sexual innuendo
- Disrespecting religion or belief
- Inappropriate communications (posting on Social Networking sites, emails or letters, etc.) which could bring the school into disrepute or be deemed as bullying, harassment and/or a hate-related

The school reserves the right to take any necessary actions to ensure that members of the school community are not subjected to any form of abuse in line with policy and procedure. If you choose to engage in these behaviours you may be asked to leave the site or the police may be called.

Thank you for your understanding and support

If your message is **urgent** or about **attendance** contact Mrs Pelosi in the **office**:
01983 740285
office@brighstoneprimary.org.uk
Office Hours 8am - 4pm

If you would like to speak with the **Headteacher** Mrs Lennon, you can find her at the school gate every morning or you can call 740285 to make an appointment with her



For **general enquiries** you can call or email the office, text the school messaging service or send a message to our school **Facebook** page: <https://www.facebook.com/BrighstoneCEPrimarySchool>
Our Facebook page is open so you do not need a personal account to view it

If you have concerns about your child's **learning** and progress, email the class teacher in the first instance and allow at least 1 working day for a reply:

Years R, 1 & 2 - teacher.bumblebee@brighstoneprimary.org.uk
Years 3 & 4 - teacher.honeybee@brighstoneprimary.org.uk
Years 5 & 6 - teacher.ivybee@brighstoneprimary.org.uk

If you have concern regarding **safeguarding** or your **child's mental health and wellbeing** please contact Mrs Jones. You can speak to her on the playground every morning, call into the school office or email m.jones@brighstoneprimary.org.uk
safeguarding@brighstoneprimary.org.uk

Our **Newsletter** is published every Friday with key information for parents and carers. You can find it on our school website: <https://www.brighstoneprimary.org.uk/category/the-buzz/>

Contact us



If you have a **safeguarding** concern about a child outside of school hours you can call the police on 999 if you feel they are at risk of immediate harm or contact Children's Services on 0300 300 0117

Please be reminded that all children need to wear the correct PE kit on PE days.
The correct PE kit is also needed for sports clubs.
Socks and hair accessories must be in the school colours.

School Day Timings

The school day is as follows:

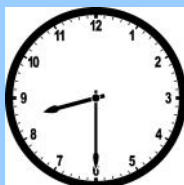
8.25am: Gates open

8.30am: School starts

3pm: School ends

3.10pm: Gates close

Many thanks.



Key dates this year

- Saturday 10th May: Wolverton Folk and Blues Fair
- Sunday 11th May: Walk the Wight
- W/c Monday 12th May: Y6 SATs week
- Tuesday 13th May: SEN consultation drop-in session in the school hall
- Friday 23rd May: Last day of term; non-uniform day for cakes for Northcourt Open Gardens (BSA)
- Tuesday 3rd June: Back to school; Honey Bee trip to Brading Roman Villa
- Monday 9th June: Statutory consultation for Resourced Provision at Brighstone ends
- Friday 27th June: Sports Day
- Saturday 5th July: Mardi Gras parade in Ryde
- Tuesday 8th July: Transition Day
- Friday 11th July: Y6 Leavers' Service in Portsmouth; Summer Sizzler
- Tuesday 15th July: Parents evening
- Wednesday 16th - Friday 18th July: Y6 London residential
- Friday 25th July: Last day of term

This list is regularly updated.

School Term Dates for 2024-2025

Please note that the school will be closed on the following days in this academic year:

Day 1: Monday 2nd September 2024

Day 2: Tuesday 3rd September 2024

Day 3: Monday 2nd June 2025

Day 4: Monday 28th July 2025

Day 5: Tuesday 29th July 2025

Term dates are available on our school website.

