

The Buzz

2nd May



Learning and Achieving Through
Love, Courage and Respect

Dear parents, carers and children,



I would like to take this opportunity to say a big thank you for all your support for the school. We had our **SIAMS inspection** on Tuesday, and we were all very proud of our children, who showed our school values throughout the day, as they do every day. The inspector said that he enjoyed talking to them, and he commented on how lovely it was to see all the children helping each other and playing with each other at lunchtime and playtimes, both younger and older together. Thank you to the parents who also met with him that day. The report will be published in approximately three weeks time.

The **BSA** held their AGM on Monday evening, where upcoming events were discussed and organised. There will be a non-uniform day (suitable for PE, please) on Friday 9th May in return for cakes and cookies to sell at the BSA's tea and cake stall at Wolverton Folk and Blues Fair on Saturday 10th May. See the flyer that was sent home today, as well as on p6 of this Buzz.



We welcomed back Mrs Denness again today, who had kindly offered to come in and do her usual **'Friday wheels'** with the Y5/6 children. We were all happy to see her back again, and she has offered to continue this on a regular basis for the summer term. We will let you know when the next date is.

We always like to support the local community, so I would like to share that Brighstone village library is holding a **Book Sale Coffee Morning** tomorrow (Saturday 3rd May) from 10- 12 noon in the Wilberforce Hall. This is to raise money for library funds as they have no financial support and rely on donations and fundraising to pay their bills, so they can keep going. You might have seen in the parish newsletter that their electricity bill in January was over £600!! Please do pop in to support the library. There will be lots of children's books for sale and the Name the Bear competition has been extended until next Saturday, so there is still time to win it!!



On the subject of the local community, we send out the local parish and church newsletters so you can keep up-to-date with news and events. We also often publish a 'school news' snippet in the West Wight Benefice newsletter. In one of the recent newsletters, there was an article about the recent **Passion Play** in Brighstone. It was fantastic to see our pupils and parents take part in this, for which their performances were praised as 'exceptional'. Well done to Alfie L (ex pupil), Anna and Martha, as well as Anna's dad!

On Thursday 8th May, we will be commemorating the **80th anniversary of VE day** by having a 'Great British Picnic' on the school field. The children can have a picnic made by Chartwells (see the menu that was emailed this week, as well as on p4 of this Buzz; the picnic can be ordered through the usual school dinner process), or they can bring their own picnic in. Children are also invited to bring in a picnic blanket to sit on with their friends. If anyone has any Union Jack bunting or flags that we could borrow, then that would be fantastic; please contact the school office.



You will have received an email today about the statutory consultation for a **Resourced Provision** at Brighstone Primary School as part of the expansion of SEN places across the island. Please visit the IOW council link on the letter, or contact me via the school office, if you have any questions.

I hope everyone has a lovely Bank Holiday weekend, and we look forward to seeing you all on Tuesday.

With best wishes,
Mrs Lennon and the Brighstone team



Collective Worship

This week, we been focusing on Friendship: Encouraging one another

"Encourage one another and build each other up."

1 Thessalonians 5.11

Building takes time, perseverance and commitment but destroying or tearing down takes no time at all. Some of our children took part in a short drama, in which Danni's friends gave her compliments, which 'built her up', but just one negative comment meant that the positive tower came crashing down.



Is it easier to remember the all the positive, encouraging comments or the negative criticism? Why is this?

What kind of friend are you? Do you encourage others and build them up, or more often, do you criticise and point out the things they struggle to do?

Maybe you should ask your friends!



Prayer of encouragement

Lord Jesus, thank you for the gift of our friends. At every opportunity, help us to...

Encourage one another and build each other up.

Make us aware when our friends are sad or feel that they have failed. Help us to...

Encourage one another and build each other up.

When we are tempted to be negative or criticise our friends, instead, help us to...

Encourage one another and build each other up.

Amen



School Dinners

Children in **Year R, 1 and 2** are entitled to a 'universal' **free** school meal everyday.

Children in Years 3-6 are charged at **£3.20** per day. Yoghurt, fruit, salad and jacket potatoes are available every day.

Baguettes available on Tuesdays and Thursday - Ham, Cheese or Tuna

Week 3	Monday	Tuesday	Wednesday	Thursday	Friday
Option 1	Ch & Tom Pizza	Hot Dog	Roast Chicken	VE day picnic	Fish Fingers
Option 2	Veggie Chilli	Veggie Hot Dog	Roast Quorn	See separate menu	Quorn Dippers
Dessert	Flapjack	Cake	Oatie Cookie	on p4 of this Buzz	Choc Mousse

Poetry Corner

A Little Talk

The big brown hen and Mrs Duck
Went walking out together;
They talked about all sorts of things -
The farmyard, and the weather.
But all I heard was: "Cluck! Cluck! Cluck!"
And "Quack! Quack! Quack!" from Mrs Duck.

Anonymous



Reading Recommendations

Each week, we include a book recommendation from a child and/or adult.

This week, Ellis recommends Usborne Lift-the flap Picture Atlas.



I recommend this book because it's got all the countries in the world and it's got a flap with the world at the end.
It tells you about the continents and it's got the song in it, too, but the continents in the book are not in order.
It's got all the animals that live in the world.
I like Europe because it's got foxes.

Safeguarding

If you have a concern about a child you can call the police on 999 if you feel they are at risk of immediate harm

You can contact the NSPCC:

Contact the NSPCC Helpline

If you have any concerns at all about a child's safety or wellbeing, don't hesitate to contact us.

Call us or email help@nspcc.org.uk

0808 800 5000

Find out more

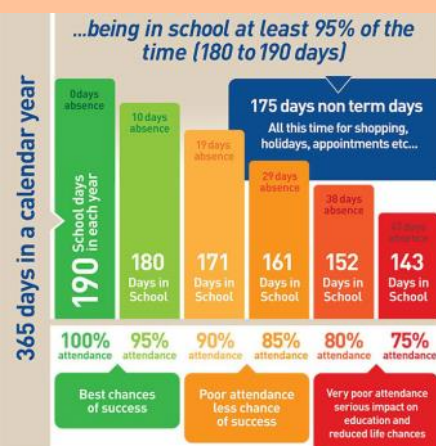
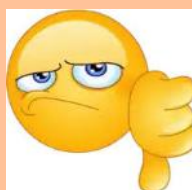
Or call children's services 0300 300 0117

Attendance Matters!

Week Commencing 29th April
(Whole school attendance target: 96.5%)

Actual Attendance: 92.12%

Late marks this week: 6



<https://www.nhs.uk/live-well/is-my-child-too-ill-for-school/>

Golden Book

Bumble Bees	Elsie, Forbes, Hudson and Max for putting in 100% effort during sensory circuits every morning. Freya for being really brave for these last two weeks.
Honey Bees	Rufus, Evan, Leo and Kieran for putting in 100% effort during sensory circuits every morning.
Ivy Bees	Freddie K for putting in 100% effort during sensory circuits every morning.
Sports Bee	Bram for outstanding focus and effort during PE.
Bee-Haviour	Anna for always showing our school values and constantly being helpful.
EARA	Florence and Ellis for constantly helping with tidying up the cupboard at lunchtime - <i>nominated by Lucy Y6 & Oskar Y5</i>





80TH ANNIVERSARY

SANDWICHES

Ham
Tuna Mayo
Cheese

SIDES

Mini Quorn Sausage Roll
Pizza Finger and Crudités

DESSERT

Victoria Sponge

**Menus may be subject to change*

8TH MAY 2025



Chartwells
So much more than fantastic food

Plea for donations of: Table lamps, fairy lights, cushions and plants!

At Brighstone, we would like to develop our classrooms into calmer, more neutral 'therapeutic classrooms'.

"Therapeutic classrooms are a new approach that redefines the traditional classroom set up. The average UK classroom is bright, cluttered, overwhelming and outdated, and is not designed around the needs of our children today."

Children deserve to feel comfortable, safe and inspired, especially when we know there has been a rise in the numbers of children struggling with their social, emotional and mental health. Teachers up and down the country are reporting increases in school refusal, dysregulated behaviours, disengagement and low social skills. Making changes to the classroom can help."

What is a therapeutic classroom?

"Therapeutic classrooms are welcoming, safe, inviting environments that cultivate learning through their design. They calm stress hormones and increase feelings of emotional safety, whilst meeting the emotional and mental health needs of the children. Therapeutic classrooms include calm spaces and flexible seating in every room as standard, and allow children to work where they feel most comfortable."

They take into consideration space, lighting, comfortability, accessibility, inclusivity and connective learning. Therapeutic classrooms are inspiring places that children want to be in and are underpinned by science. "

<https://www.tpctherapy.co.uk/therapeutic-classrooms/>

To start this process, we are looking to introduce **table lamps** and **fairy lights** (so we can turn off or reduce the use of the bright overhead lighting), **cushions** (to make comfy seating areas) and **plants**.

As budget is tight, we are wondering if you have, or know of anyone who has, any spare table lamps, cushions, fairy lights and plants that you no longer need. To minimise the use of bright colours, ideally these new furnishings need to be in neutral colours.

Please contact the school office if you have anything that you would like to donate.

Thank you!





BSA TEA TENT AT WOLVERTON

BAKERS WE NEED YOU!

**Home made
are best
sellers!**



**In return for coming
to school in non-
uniform PE clothes
on FRIDAY 9 MAY,
we need:**

- Cupcakes – all colours
- Cookies – all flavours
- and CAKES:



- Victoria Sponges
- Chocolate Cakes
- Coffee & Walnut
- Lemon Drizzle...
- or any cake that you love bake!



Please bring cakes to Brighstone Primary on Friday 9 May or Wolverton on Saturday 10 May, BSA Tea Tent

VOLUNTEERS NEEDED! **WOLVERTON FOLK & BLUES FESTIVAL** **SATURDAY 10TH MAY**

The BSA run the tea tent and children's activities at the festival and we are looking for lots of helpers to help raise as much as we can to support the school in the coming year!

We have shifts that

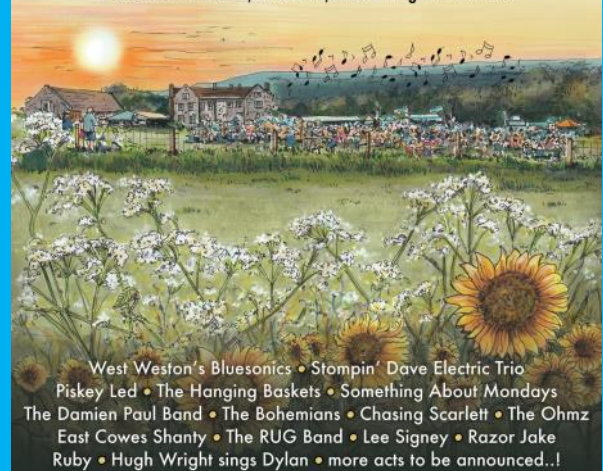
11:00-14:00, 14:00-17:00 & 17:00-1900

if you're able to help, message in your class groups so a member of the BSA can pick it up and pass it on and someone will be in touch.

Wolverton Folk & Blues

SATURDAY 10TH MAY 2025 • 11.30 AM - 8.00 PM

at Wolverton Manor, Shorwell, Isle of Wight. PO30 3JS



West Weston's Bluesonics • Stompin' Dave Electric Trio
Piskey Led • The Hanging Baskets • Something About Mondays
The Damien Paul Band • The Bohemians • Chasing Scarlett • The Ohmz
East Cowes Shanty • The RUG Band • Lee Signey • Razor Jake
Ruby • Hugh Wright sings Dylan • more acts to be announced..!

Family Friendly Kids Activities Local Food Stalls Beer Tent Tea Tent

TICKETS: £12 in advance, £15 on the gate. Under 12's FREE

Available from: The Village Shop, Brighstone, Briddlesford Farm Shop,
Waterstones, Newport, Orchard Brothers, Freshwater Bay.

Sponsored by:

WolvertonFolkandBlues e: iwfoodnfolk@gmail.com

IN AID OF CANCER SUPPORT AND BRIGHSTONE PRIMARY SCHOOL





*Parents,
Family members
& friends of Brighstone
Primary School*

Does your place of work offer the Match Funding Scheme?

Get in touch with us if your employers could
help our BSA fundraisers via email at
brighstoneschoolassoc@gmail.com

BSA ASTRA RECYCLING BIN

We take...

Clothes
Shoes
Bed Linen
Accessories
(Such as belts, hats & handbags)
Soft Toys

We can't take...

Duvets or Cushions
Off Cuts
Carpet or Curtains

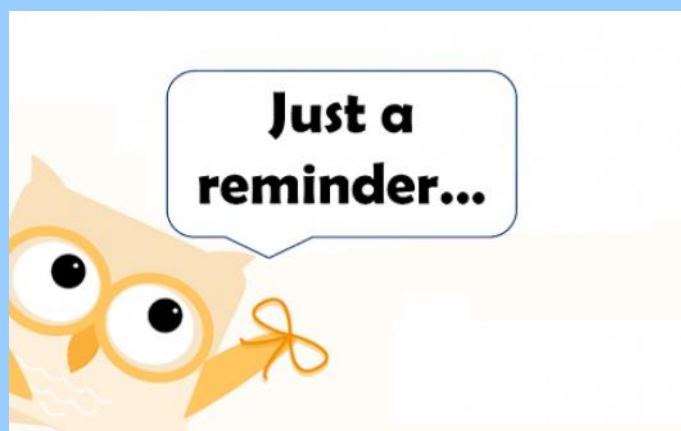


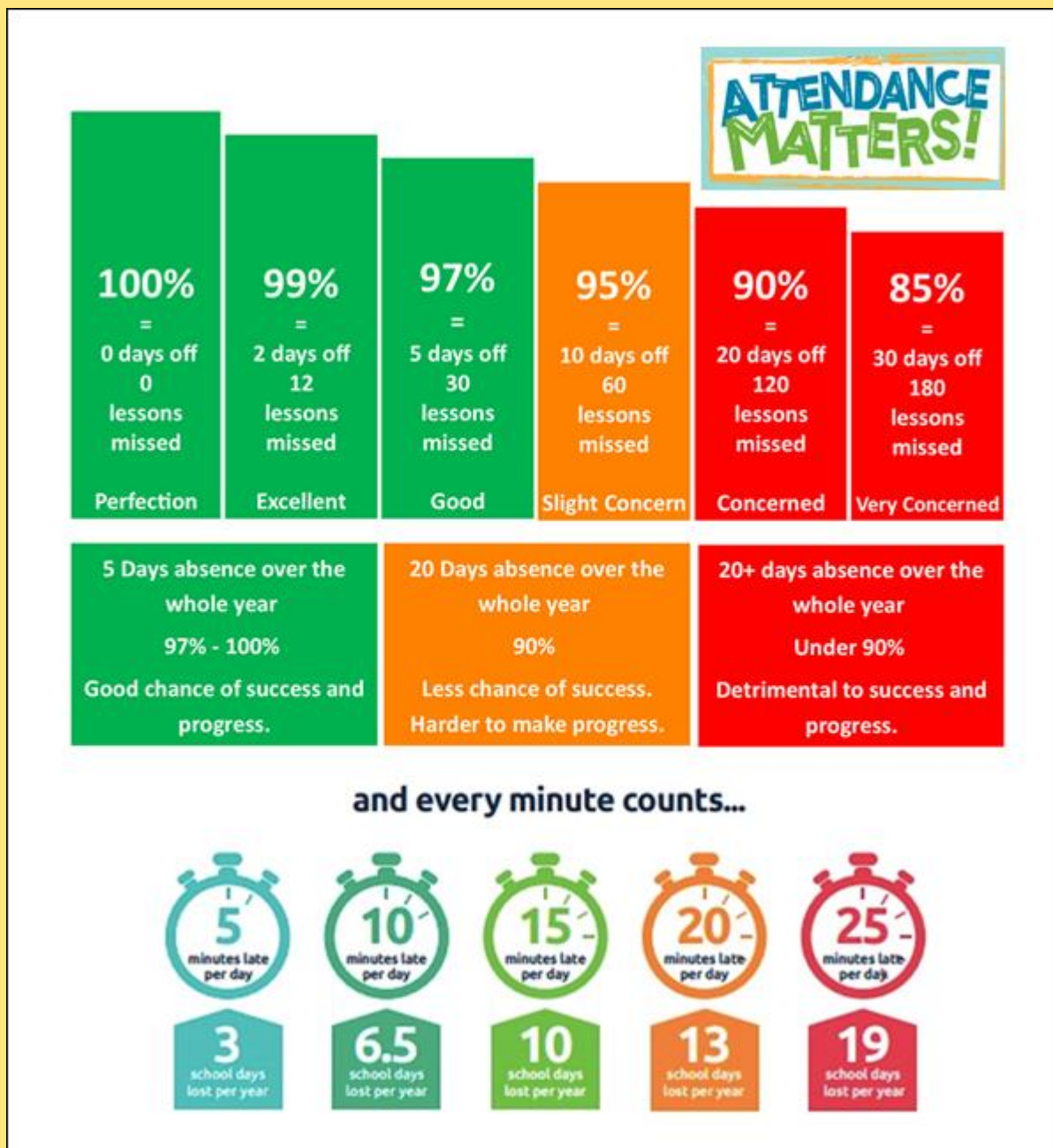
Find our recycling bin at the front entrance of the
school.

Reminders

- PE Kit is navy blue top/jumper/hoodie with navy blue bottoms - **Branded items are not permitted**
- All hair accessories, socks, shoes and trainers must be in the school colours: navy blue, grey, black or white (no novelty socks)
- All long hair must be tied back (pony tail, bun, plaits etc...) to avoid the spreading of head lice
- No jewellery to be worn other than stud earrings, which must be removed or taped over on PE days
- Gates open at 8.25am and are locked at 8.30am, and in the afternoon, gates are opened at 2.55pm and locked at 3.10pm
- **As teachers are busy welcoming and supervising children first thing in the morning, please could all messages be given to Mrs Pelosi in the office, who will then pass them on to the teacher**
- Only **water** is allowed in drinks bottles, and snacks must be fruit only

Thank you!





At Brighstone Primary School we have high expectations for our children. This begins with attendance and punctuality as they are important life skills to learn.

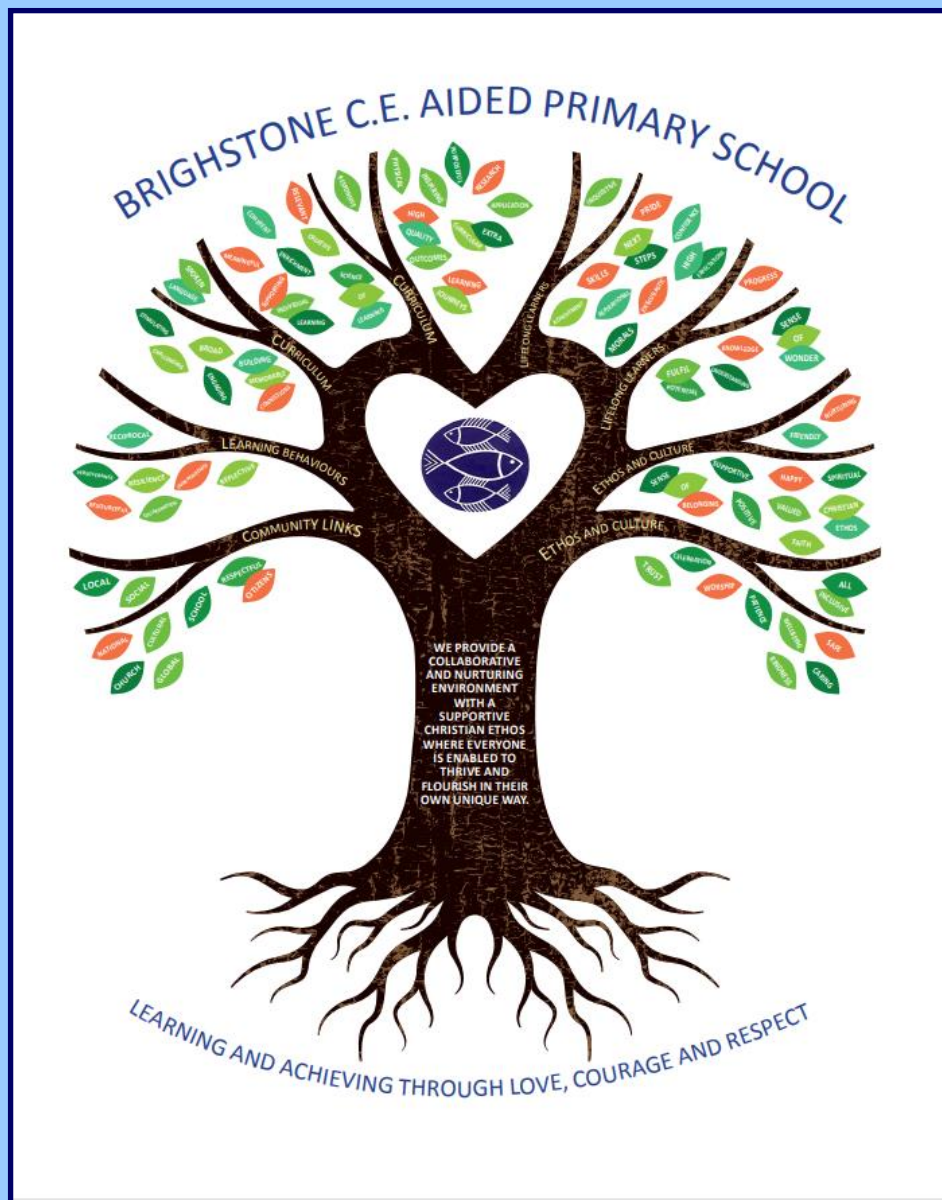
Good school attendance habits are best started early. Children learn from those around them and you as parents/carers set the standards and expectations for your child. Lateness has a negative impact; being late may disrupt already settled children and lessons, affect achievement and embarrass, worry or upset your child. We understand that there may be an occasional unavoidable instance where you are late, but if it happens frequently, please let us know if there may be something that we can do to help.

What to do if your child is unwell:

Check the NHS Guidance: <https://www.nhs.uk/live-well/is-my-child-too-ill-for-school/>

You should notify the school office before 9am every morning your child is unable to attend due to illness. You can either telephone on 740285 or email on office@brighstoneprimary.org.uk. Telephone calls must be followed up in writing to authorise the (illness) absence.

Our Vision Statement



A vision statement 'seeks to inspire and give direction to all stakeholders (staff, children, parents, governors and the wider community). It is an aspirational description of what an organisation would like to achieve or accomplish in the mid-term or long-term future. It is intended to serve as a clear guide for choosing current and future courses of action'.

Our vision statement works alongside our mission statement 'Learning and Achieving Through Love, Courage and Respect', which includes our values, to reflect and guide our culture, ethos and decision making. This is also on our website.

As a school, in 2020 we worked together with a range of stakeholders to write our vision statement, and we decided to create a visual vision statement to make it stand out and be memorable. Each part of the image has been carefully chosen to represent our school:

Our values, as part of the mission statement (tagline), are the roots and foundation that feed and nourish our school.

The vision statement is the main body (trunk) that guides all our actions.

The branches reflect the different aspects of life in our school.

The leaves show examples of how these aspects are shown.

The school logo in the centre of the tree represents the Christian ethos that is at the heart of everything we do.



Respect Charter

at Brighstone CE Aided Primary School

At Brighstone CE Aided Primary School we believe staff, parents and children are entitled to a safe and protective environment in which to learn and work. We strive to ensure that our school offers a warm and nurturing environment. All members of the school community and visitors should demonstrate mutual respect, to feel safe, work together and to use restorative approaches as the foundation of our practice. Any behaviour that may lead to feelings of harassment, alarm or distress to members of our community, will not be tolerated and action taken.

Expectations

- That all adults set a good example to children at all times, showing them how to get along with all members of the school and the wider community.
- That no one - staff, governors, parents, carers, volunteers or children - be subjected to abusive behaviour or any form of threats from visitors on the school premises.
- That physical attacks and threatening behaviour, abusive or insulting language verbal or written (including on social media), to staff, governors, parents, carers, volunteers, children and other users of the school premises will not be tolerated and may lead to a ban from school premises and/or police action.

Types of behaviour that are considered serious and unacceptable

This is not an exhaustive list but seeks to provide illustrations of such behaviour:

- Shouting, either in person or over the telephone
- Speaking in an aggressive/threatening tone
- Physically intimidating, e.g. standing very close
- The use of aggressive hand gestures/exaggerated movements
- Physical threats
- Shaking or holding a fist towards another person
- Swearing and name calling
- Pushing
- Slapping, punching, hitting or kicking
- Racist, homophobic or other hateful behaviour
- Sexist comments or sexual innuendo
- Disrespecting religion or belief
- Inappropriate communications (posting on Social Networking sites, emails or letters, etc.) which could bring the school into disrepute or be deemed as bullying, harassment and/or a hate-related

The school reserves the right to take any necessary actions to ensure that members of the school community are not subjected to any form of abuse in line with policy and procedure. If you choose to engage in these behaviours you may be asked to leave the site or the police may be called.

Thank you for your understanding and support

If your message is **urgent** or about **attendance**

contact Mrs Pelosi in the **office**:

01983 740285

office@brighstoneprimary.org.uk

Office Hours 8am - 4pm

If you would like to speak with the **Headteacher**

Mrs Lennon, you can find her at the school gate every morning or you can call 740285 to make an appointment with her



For **general enquiries** you can call or email the office, text the school messaging service or send a message to our school **Facebook** page: <https://www.facebook.com/BrighstoneCEPrimarySchool>

Our Facebook page is open so you do not need a personal account to view it

If you have concerns about your child's **learning** and progress, email the class teacher in the first instance and allow at least 1 working day for a reply:

Years R, 1 & 2 - teacher.bumblebee@brighstoneprimary.org.uk

Years 3 & 4 - teacher.honeybee@brighstoneprimary.org.uk

Years 5 & 6 - teacher.ivybee@brighstoneprimary.org.uk

If you have concern regarding **safeguarding** or your **child's mental health and wellbeing** please contact Mrs Jones. You can speak to her on the playground every morning, call into the school office or email m.jones@brighstoneprimary.org.uk
safeguarding@brighstoneprimary.org.uk

Our **Newsletter** is published every Friday with key information for parents and carers. You can find it on our school website:

<https://www.brighstoneprimary.org.uk/category/the-buzz/>

Contact us



If you have a **safeguarding** concern about a child outside of school hours you can call the police on 999 if you feel they are at risk of immediate harm or contact Children's Services on 0300 300 0117

Please be reminded that all children need to wear the correct PE kit on PE days.

The correct PE kit is also needed for sports clubs.

Socks and hair accessories must be in the school colours.

School Day Timings

The school day is as follows:

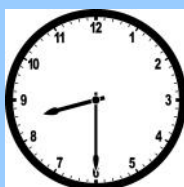
8.25am: Gates open

8.30am: School starts

3pm: School ends

3.10pm: Gates close

Many thanks.



Key dates this year

- Friday 2nd May: Statutory consultation for Resourced Provision at Brighstone starts
- Friday 9th May: Non-uniform day in return for cakes/cookies for Wolverton
- Saturday 10th May: Wolverton Folk and Blues Fair
- Sunday 11th May: Walk the Wight
- W/c Monday 12th May: Y6 SATs week
- Friday 23rd May: Last day of term
- Tuesday 3rd June: Back to school
- Monday 9th June: Statutory consultation for Resourced Provision at Brighstone ends
- Friday 27th June: Sports Day
- Saturday 5th July: Mardi Gras parade in Ryde
- Tuesday 8th July: Transition Day
- Friday 11th July: Y6 Leavers' Service in Portsmouth; Summer Sizzler
- Tuesday 15th July: Parents evening
- Wednesday 16th - Friday 18th July: Y6 London residential
- Friday 25th July: Last day of term

This list is regularly updated.

School Term Dates for 2024-2025

Please note that the school will be closed on the following days in this academic year:

Day 1: Monday 2nd September 2024

Day 2: Tuesday 3rd September 2024

Day 3: Monday 2nd June 2025

Day 4: Monday 28th July 2025

Day 5: Tuesday 29th July 2025

Term dates are available on

our school website.

