

The Buzz

23rd May



Learning and Achieving Through
Love, Courage and Respect

Dear parents, carers and children,

I can't believe that it is the last day of term already. We had a jam-packed **Golden Worship** this morning, in which we celebrated lots of outside achievements. All the children (and parents/carers) are so busy outside of school, with swimming, cycling, darts, rugby and entering the Brighstone Horticultural Society shows. It's always lovely to see how talented you all are.

Honey Bees have been really enthusiastic about their DT lessons this half term. They have been designing and creating pavilions using a framed structure and have thought of innovative ways of cladding their constructions.



In today's Art lesson, **KS1** had the challenge of actually drawing what they see, not what they think something looks like. They also had a choice of media, using some of the materials they have been practising with this half term.



Today we had a non-uniform day in return for cakes for **Northcourt House open garden** on Sunday 25th May. The BSA run the tea and cake stall, which helps to raise money for the school. Thank you for all your delicious cakes, and we hope to see you at Northcourt on Sunday afternoon.

We have another event coming up this term to help raise money for the school. The governors warmly invite you to a **Summer Shindig**, a fun evening of live music, with food and a bar, on the evening of Thursday 24th July. This is open to all the community - the more, the merrier! Please see the email with the poster, as well as our Facebook post, with details of how to book.



KS2 children are very excited about their trips that are coming up to start their new learning journeys in History and English.

Honey Bees will be visiting **Brading Roman Villa** and Ivy Bees will be visiting the **Mary Rose Museum**. We know that they will have a fantastic time, and we can't wait to hear all about the trips!

I hope everyone has a lovely half term.

With best wishes,

Mrs Lennon and the Brighstone team



Collective Worship

This week, we been focusing on Friendship: Learning to Listen

Being a friend isn't just about sharing the good times. Sometimes we need to show compassion towards our friends when times are tough. That can often just mean listening to them carefully when they want to talk.

Two of Ivy Bee class performed a puppet show with Barney and Bella, which showed the importance of listening to our friends when they are in need, and not getting distracted by things like mobile phones.

Think about how you can really **listen** to what your friends are saying if they are upset or need your help. What could you say to them?



Prayer for God's friendship

Lord, please go before us, to lead;

Walk beside us, to befriend;

Be above us, to protect;

Stay behind us, to direct;

Be beneath us, to support;

And enfold us in your love.

Amen

"A friend is always loyal, and a brother is born to help in time of need." Proverbs 17:17



School Dinners

Children in **Year R, 1 and 2** are entitled to a 'universal' **free** school meal everyday.

Children in Years 3-6 are charged at **£3.20** per day. Yoghurt, fruit, salad and jacket potatoes are available every day.

Baguettes available on Tuesdays and Thursday - Ham, Cheese or Tuna

2nd June	Monday	Tuesday	Wednesday	Thursday	Friday
Option 1	No	Hot Dog	Roast Chicken	Oat Crusted Chicken	Fish Fingers
Option 2	School	Veggie Hot Dog	Roast Quorn	Veggie Shepherds Pie	Quorn Dippers
Dessert		Cake	Oatie Cookie	Ice Cream	Choc Mousse

Poetry Corner

New Poem

This poem is new
Brand spanking new
Each letter straight from the pen
Each word shiny and polished
Each line freshly forged by the poet.

This poem is new
Brand spanking new
Not worn with over-reading
Not familiar or predictable
It needs to be concentrated on
Because it is new,
Anything could happen...
But doesn't.

All the words in this poem
May well have been used before
In other poems
But not in this order
For this is a new poem.

A brand-new poem.

Paul Cookson

Reading Recommendations

Each week, we include a book recommendation from a child and/or adult.

This week, Annie recommends Mokee Joe by Peter J. Murray.



I recommend this book series because you get lots of adventures with a scary monster named Mokee Joe. Also, you get to see three friends that have the enemy of Mokee Joe. It's very adventurous and you get to travel around the world to a desert, a swamp and normal land.

Safeguarding

If you have a concern about a child you can call the police on 999 if you feel they are at risk of immediate harm

You can contact the NSPCC:

Contact the NSPCC Helpline

If you have any concerns at all about a child's safety or wellbeing, don't hesitate to contact us.

Call us or email help@nspcc.org.uk

0808 800 5000

Find out more

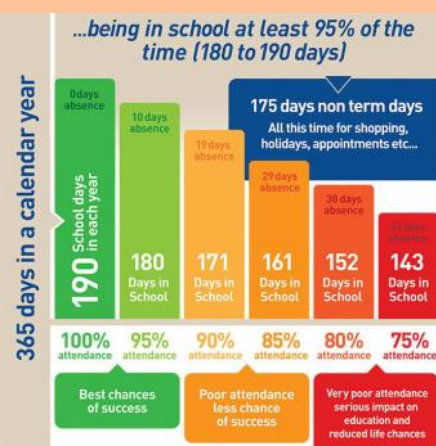
Or call children's services 0300 300 0117

Attendance Matters!

Week Commencing 19th May
(Whole school attendance target: 96.5%)

Actual Attendance: 95.69%

Late marks this week: 14



<https://www.nhs.uk/live-well/is-my-child-too-ill-for-school/>

Golden Book

Outside Achievements



Plea for donations of: Table lamps, fairy lights, cushions and plants!

At Brighstone, we would like to develop our classrooms into calmer, more neutral 'therapeutic classrooms'.

"Therapeutic classrooms are a new approach that redefines the traditional classroom set up. The average UK classroom is bright, cluttered, overwhelming and outdated, and is not designed around the needs of our children today."

Children deserve to feel comfortable, safe and inspired, especially when we know there has been a rise in the numbers of children struggling with their social, emotional and mental health. Teachers up and down the country are reporting increases in school refusal, dysregulated behaviours, disengagement and low social skills. Making changes to the classroom can help."

What is a therapeutic classroom?

"Therapeutic classrooms are welcoming, safe, inviting environments that cultivate learning through their design. They calm stress hormones and increase feelings of emotional safety, whilst meeting the emotional and mental health needs of the children. Therapeutic classrooms include calm spaces and flexible seating in every room as standard, and allow children to work where they feel most comfortable."

They take into consideration space, lighting, comfortability, accessibility, inclusivity and connective learning. Therapeutic classrooms are inspiring places that children want to be in and are underpinned by science. "

<https://www.tpctherapy.co.uk/therapeutic-classrooms/>

To start this process, we are looking to introduce **table lamps** and **fairy lights** (so we can turn off or reduce the use of the bright overhead lighting), **cushions** (to make comfy seating areas) and **plants**.

As budget is tight, we are wondering if you have, or know of anyone who has, any spare table lamps, cushions, fairy lights and plants that you no longer need. To minimise the use of bright colours, ideally these new furnishings need to be in neutral colours.

Please contact the school office if you have anything that you would like to donate.

Thank you!





*Grow a few
extra
for us!*



Remember to bear our plant sale in mind when growing your seeds over the next few weeks.

The BSA plant sale will be after half term...details to come soon!



*Parents,
Family members
& friends of Brighstone
Primary School*

**Does your place of
work offer the Match
Funding Scheme?**

Get in touch with us if your employers could help our BSA fundraisers via email at brighstoneschoolassoc@gmail.com

BSA ASTRA RECYCLING BIN

We take...

Clothes
Shoes
Bed Linen
Accessories
(Such as belts, hats & handbags)
Soft Toys

We can't take...

Duvets or Cushions
Off Cuts
Carpet or Curtains



Find our recycling bin at the front entrance of the school.

BRIGHSTONE CE PRIMARY SCHOOL
GOVERNORS PRESENT

SUMMER SHINDIG

THURSDAY 24TH JULY

7PM - 10:30PM

SCHOOL FIELD
WARNES LANE
BRIGHSTONE

JOIN US FOR AN EVENING OF LIVE MUSIC,
DANCING AND GREAT FOOD.
RAISING FUNDS FOR
BRIGHSTONE CE PRIMARY SCHOOL

ADULT TICKETS £10 | TEEN TICKETS £5
(UNDER 12S GO FREE)

ALL UNDER 18S MUST BE ACCOMPANIED BY AN ADULT

SCAN THE QR
CODE TO BOOK



IF YOU HAVE ANY PROBLEMS BOOKING PLEASE CONTACT
EMILY ON E.RUFIAN@BRIGHSTONEPRIMARY.ORG.UK

[HTTPS://BRIGHSTONE-CE-PRIMARY-SCHOOL-GOVERNORS-PRESENT.SQUARE.SITE/](https://brighstone-ce-primary-school-governors-present.square.site/)

INTERSCHOOL TEAM DRESSAGE

Thursday 19th June 2025

Little Kennerley Farm, Godshill

By kind permission of Dawn and Hayley Webster



It will be run over four sections:

Primary Schools	Pony club D Level Test or BD Prelim Test 1
Secondary Schools	BD Prelim Test 2 or BD Novice Test 2

The entry fee is £8 per rider. Entries need to be sent to Karen Begley at Carisbrooke College. Payment by cheque, cash or bacs . Payment by cheque, cash or Bacs. Bacs payments to Account name: School Equestrian Competition, Number: 21359423, Sort code: 54-10-34

It is open to teams of 4 (with best three scores counting) and individuals.

Entries close on Wednesday 4th June. Times will be emailed to schools and put on the Isle of Wight Horse Community Facebook Page on Wednesday 11th June

A representative of the school will need to accompany the team and be responsible for them during the competition. Please make sure that your school has insurance that will cover extra curricular activities (including horse riding) .

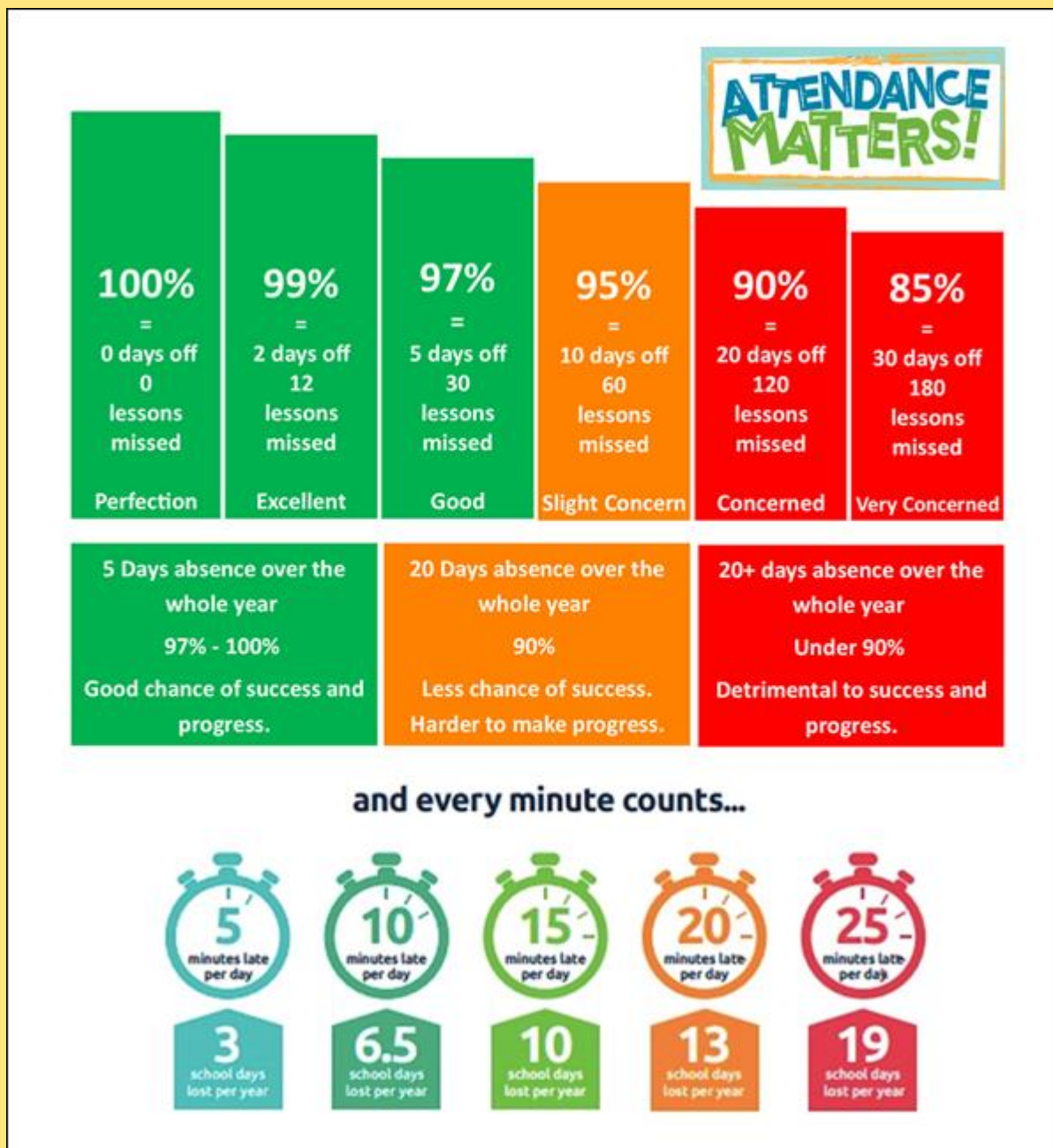
If you require any further information please contact Karen Begley at Carisbrooke College 524651 or karen.begley@carisbrooke.iow.sch.uk

Reminders

- PE Kit is navy blue top/jumper/hoodie with navy blue bottoms - **Branded items are not permitted**
- All hair accessories, socks, shoes and trainers must be in the school colours: navy blue, grey, black or white (no novelty socks)
- All long hair must be tied back (pony tail, bun, plaits etc...) to avoid the spreading of head lice
- No jewellery to be worn other than stud earrings, which must be removed or taped over on PE days
- Gates open at 8.25am and are locked at 8.30am, and in the afternoon, gates are opened at 2.55pm and locked at 3.10pm
- **As teachers are busy welcoming and supervising children first thing in the morning, please could all messages be given to Mrs Pelosi in the office, who will then pass them on to the teacher**
- Only **water** is allowed in drinks bottles, and snacks must be fruit only

Thank you!





At Brighstone Primary School we have high expectations for our children. This begins with attendance and punctuality as they are important life skills to learn.

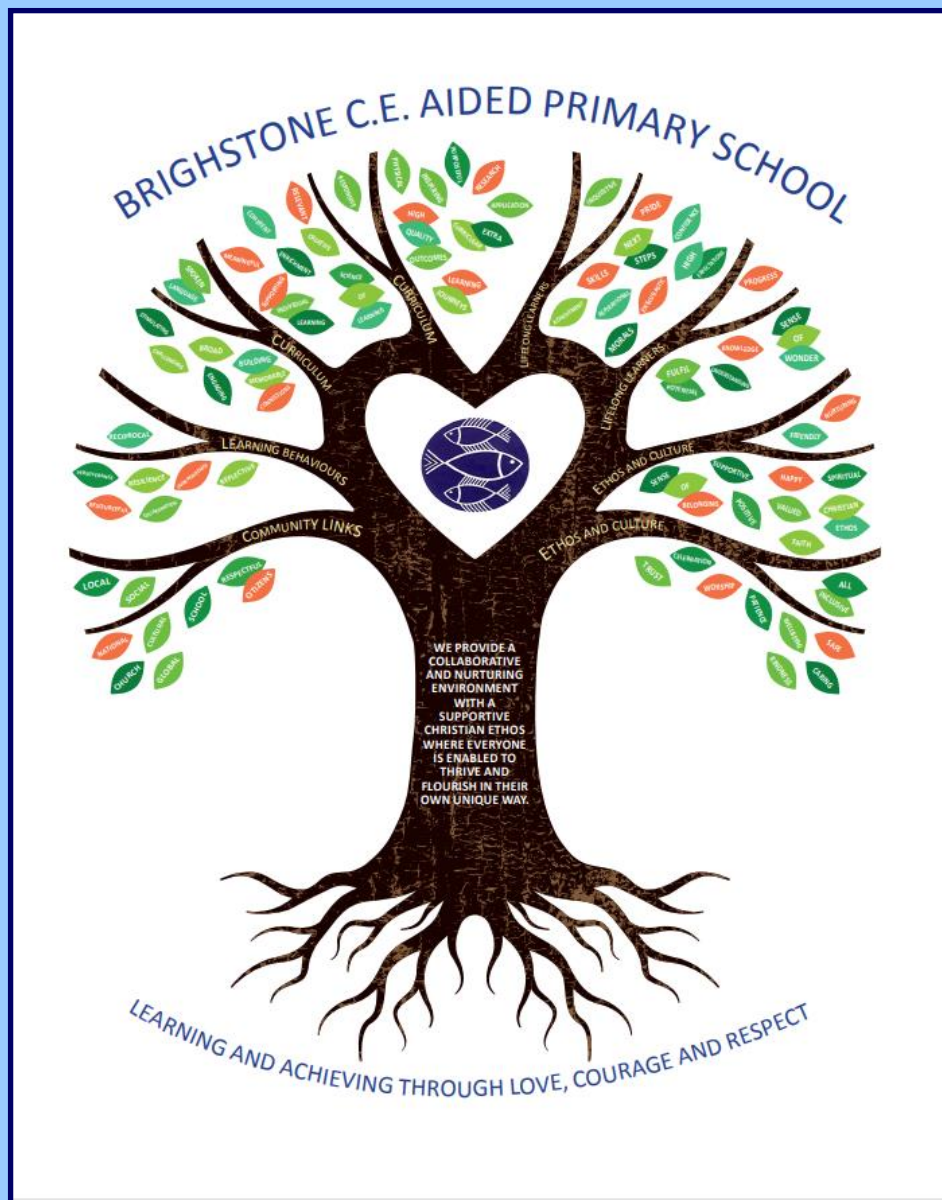
Good school attendance habits are best started early. Children learn from those around them and you as parents/carers set the standards and expectations for your child. Lateness has a negative impact; being late may disrupt already settled children and lessons, affect achievement and embarrass, worry or upset your child. We understand that there may be an occasional unavoidable instance where you are late, but if it happens frequently, please let us know if there may be something that we can do to help.

What to do if your child is unwell:

Check the NHS Guidance: <https://www.nhs.uk/live-well/is-my-child-too-ill-for-school/>

You should notify the school office before 9am every morning your child is unable to attend due to illness. You can either telephone on 740285 or email on office@brighstoneprimary.org.uk. Telephone calls must be followed up in writing to authorise the (illness) absence.

Our Vision Statement



A vision statement 'seeks to inspire and give direction to all stakeholders (staff, children, parents, governors and the wider community). It is an aspirational description of what an organisation would like to achieve or accomplish in the mid-term or long-term future. It is intended to serve as a clear guide for choosing current and future courses of action'.

Our vision statement works alongside our mission statement 'Learning and Achieving Through Love, Courage and Respect', which includes our values, to reflect and guide our culture, ethos and decision making. This is also on our website.

As a school, in 2020 we worked together with a range of stakeholders to write our vision statement, and we decided to create a visual vision statement to make it stand out and be memorable. Each part of the image has been carefully chosen to represent our school:

Our values, as part of the mission statement (tagline), are the roots and foundation that feed and nourish our school.

The vision statement is the main body (trunk) that guides all our actions.

The branches reflect the different aspects of life in our school.

The leaves show examples of how these aspects are shown.

The school logo in the centre of the tree represents the Christian ethos that is at the heart of everything we do.



Respect Charter

at Brighstone CE Aided Primary School

At Brighstone CE Aided Primary School we believe staff, parents and children are entitled to a safe and protective environment in which to learn and work. We strive to ensure that our school offers a warm and nurturing environment. All members of the school community and visitors should demonstrate mutual respect, to feel safe, work together and to use restorative approaches as the foundation of our practice. Any behaviour that may lead to feelings of harassment, alarm or distress to members of our community, will not be tolerated and action taken.

Expectations

- That all adults set a good example to children at all times, showing them how to get along with all members of the school and the wider community.
- That no one - staff, governors, parents, carers, volunteers or children - be subjected to abusive behaviour or any form of threats from visitors on the school premises.
- That physical attacks and threatening behaviour, abusive or insulting language verbal or written (including on social media), to staff, governors, parents, carers, volunteers, children and other users of the school premises will not be tolerated and may lead to a ban from school premises and/or police action.

Types of behaviour that are considered serious and unacceptable

This is not an exhaustive list but seeks to provide illustrations of such behaviour:

- Shouting, either in person or over the telephone
- Speaking in an aggressive/threatening tone
- Physically intimidating, e.g. standing very close
- The use of aggressive hand gestures/exaggerated movements
- Physical threats
- Shaking or holding a fist towards another person
- Swearing and name calling
- Pushing
- Slapping, punching, hitting or kicking
- Racist, homophobic or other hateful behaviour
- Sexist comments or sexual innuendo
- Disrespecting religion or belief
- Inappropriate communications (posting on Social Networking sites, emails or letters, etc.) which could bring the school into disrepute or be deemed as bullying, harassment and/or a hate-related

The school reserves the right to take any necessary actions to ensure that members of the school community are not subjected to any form of abuse in line with policy and procedure. If you choose to engage in these behaviours you may be asked to leave the site or the police may be called.

Thank you for your understanding and support

If your message is **urgent** or about **attendance**

contact Mrs Pelosi in the **office**:

01983 740285

office@brighstoneprimary.org.uk

Office Hours 8am - 4pm

If you would like to speak with the **Headteacher**

Mrs Lennon, you can find her at the school gate every morning or you can call 740285 to make an appointment with her



For **general enquiries** you can call or email the office, text the school messaging service or send a message to our school **Facebook** page: <https://www.facebook.com/BrighstoneCEPrimarySchool>

Our Facebook page is open so you do not need a personal account to view it

If you have concerns about your child's **learning** and progress, email the class teacher in the first instance and allow at least 1 working day for a reply:

Years R, 1 & 2 - teacher.bumblebee@brighstoneprimary.org.uk

Years 3 & 4 - teacher.honeybee@brighstoneprimary.org.uk

Years 5 & 6 - teacher.ivybee@brighstoneprimary.org.uk

If you have concern regarding **safeguarding** or your **child's mental health and wellbeing** please contact Mrs Jones. You can speak to her on the playground every morning, call into the school office or email m.jones@brighstoneprimary.org.uk
safeguarding@brighstoneprimary.org.uk

Our **Newsletter** is published every Friday with key information for parents and carers. You can find it on our school website:

<https://www.brighstoneprimary.org.uk/category/the-buzz/>

Contact us



If you have a **safeguarding** concern about a child outside of school hours you can call the police on 999 if you feel they are at risk of immediate harm or contact Children's Services on 0300 300 0117

Please be reminded that all children need to wear the correct PE kit on PE days.

The correct PE kit is also needed for sports clubs.

Socks and hair accessories must be in the school colours.

School Day Timings

The school day is as follows:

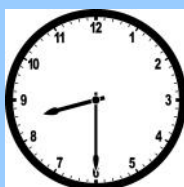
8.25am: Gates open

8.30am: School starts

3pm: School ends

3.10pm: Gates close

Many thanks.



Key dates this year

- Tuesday 3rd June: Back to school; Honey Bee trip to Brading Roman Villa
- Friday 6th June: Ivy Bee trip to the Mary Rose Museum
- Monday 9th June: Statutory consultation for Resourced Provision at Brighstone ends
- Friday 27th June: Sports Day
- Saturday 5th July: Mardi Gras parade in Ryde
- Tuesday 8th July: Transition Day
- Friday 11th July: Y6 Leavers' Service in Portsmouth; Summer Sizzler
- Tuesday 15th July: Parents evening
- Wednesday 16th -
Friday 18th July: Y6 London residential
- Thursday 24th July: Whole school Forest Day (further details to follow); Summer Shindig
- Friday 25th July: Last day of term

This list is regularly updated.

School Term Dates for 2024-2025

Please note that the school will be closed on the following days in this academic year:

Day 1: Monday 2nd September 2024

Day 2: Tuesday 3rd September 2024

Day 3: Monday 2nd June 2025

Day 4: Monday 28th July 2025

Day 5: Tuesday 29th July 2025

Term dates are available on our school website.

