

# The Buzz

## 16th May



Learning and Achieving Through  
Love, Courage and Respect

Dear parents, carers and children,

What an amazing two days the community (local and island-wide) had last weekend. Saturday saw a very successful **Wolverton Folk and Blues Fair**, for which the BSA ran the tea and cake tent again. A huge thank you to all the parents/carers and school staff who helped to set it up, to run it on the day, and to take it all down again. A big thank you to the Y4/5/6 children who ran the glitter tattoo stall, as well! The total raised during the day was just over £2000, which goes towards school trips and equipment.



On Sunday, a lot of our school community took part in **Walk the Wight**. Some walked from Carisbrooke, some did the whole walk or the half walk from Bembridge, some did the flat walk and some walked from Freshwater. Whichever route you did, I am sure you had a wonderful time as the atmosphere was fantastic and the sun shone. Thank you for supporting such a good cause. See our Facebook page for more photos.

This week, we were delighted to share the report from our recent **SIAMS inspection** that took place on Tuesday 29th April. We received the official judgement as follows: 'Brighstone Church of England Aided Primary School is living up to its foundation as a Church school and is enabling pupils and adults to flourish.' There were so many positive comments in the report that summed up our school so well. I would like to say thank you for everyone's support in helping to make our school the warm, welcoming, friendly and inclusive place that it is. (See the email sent to all on 13th May. The report is also available on our school website.)



On Tuesday, the Local Authority held an **SEN consultation drop-in session** in the school hall, focusing on the proposed Resourced Provision at our school. Thank you to those who were able to attend. Please do share your thoughts on the possible next chapter in the life of Brighstone Primary School via the following email:

strategic.planning@iow.gov.uk. The consultation ends on 9th June.



In the **Kids With Bricks** after-school club, the theme for this term is America, and this week everyone's challenge was to build the Empire State Building, which most people attempted. These two are Mrs Sharp's favourite as the builders Quinn and Tristan have really thought about how to reconstruct the shape and detail of the skyscraper.



In **Ivy Bee class**, their DT focus for this half term has been planning and designing an adventure playground. This week it was the creating part! Most of the class worked in Y5/6 pairs to create one piece of their overall design. Everyone worked sensibly and co-operatively to produce some smashing objects, that full sized would be incredibly exciting to play on.



Finally, I would like to say a huge well done to all of our **Y6 children**. We are incredibly proud of each and every one of you for the way you approached SATs week. You showed focus, resilience, courage and determination throughout, not to mention big doses of fun and good spirits! Whatever the results, remember that tests can never measure all the amazing things that make you you — your creativity, kindness, humour, and individuality.

I hope everyone has a lovely weekend.

With best wishes,

Mrs Lennon and the Brighstone team



# Collective Worship

This week, we been focusing on Friendship: Making Time for Each Other

We looked at this picture by He Qi, which shows the time when Jesus went to the house of a family who had shown him kindness and friendship. In this family there was a brother, Lazarus, and two sisters, Martha and Mary.



Martha prepared a meal for Jesus while Mary sat at his feet, listening to his teachings. Martha, feeling overwhelmed, asked Jesus to tell Mary to help, but Jesus commended Mary for choosing the "better part" - listening to his teachings. This story highlights the different approaches to serving Jesus, with Mary prioritising listening and Martha prioritising practical service. It shows that, even when there are jobs to do, it is still important to make time for each other.

## A Prayer for Good Friendship

Let our friendships be strong, Oh Lord,  
That they may become a blessing to others.  
Let our friendships be open, Oh Lord,  
That they may be a haven for others.  
Let our friendships be gentle, Oh Lord,  
That they may bring peace to others.  
For Jesus' sake,  
Amen  
By Rt Revd Christopher Herbert



## School Dinners

Children in **Year R, 1 and 2** are entitled to a 'universal' **free** school meal everyday.

Children in Years 3-6 are charged at **£3.20** per day. Yoghurt, fruit, salad and jacket potatoes are available every day.

**Baguettes available on Tuesdays and Thursday - Ham, Cheese or Tuna**

Week 1	Monday	Tuesday	Wednesday	Thursday	Friday
Option 1	Ch & Tom Pizza	BBQ Chicken & Rice	Roast Pork	Beef Burger	Fish & Chips
Option 2	Veggie Tart	Macaroni Cheese	Veggie Bake	Quorn Burger	Veggie fingers
Dessert	Choc Brownie	Jelly	Banoffee Pie	Ice Cream	Biscuit & Fruit

## Poetry Corner

### O Dandelion

"O dandelion, yellow as gold,  
What do you do all day?"

*"I just wait here in the tall green grass  
Till the children come to play."*

"O dandelion, yellow as gold,  
What do you do all night?"

*"I wait and wait till the cool dew falls  
And my hair grows long and white."*

"And what do you do when your hair is white  
And the children come to play?"

*"They take me up in their dimpled hands  
And blow my hair away."*

Anonymous

## Reading Recommendations

Each week, we include a book recommendation from a child and/or adult.

This week, Annie recommends Harry Potter and the Order of the Phoenix by J.K. Rowling.



I recommend this book because you get to know everything about the wizarding world of Harry Potter. You get to hear the laughter, fun and more. There are lots of adventures in this book. It's exciting and you get to see most of the actors as who they are in Harry Potter.

## Safeguarding

If you have a concern about a child you can call the police on 999 if you feel they are at risk of immediate harm

You can contact the NSPCC:

### Contact the NSPCC Helpline

If you have any concerns at all about a child's safety or wellbeing, don't hesitate to contact us.

Call us or email [help@nspcc.org.uk](mailto:help@nspcc.org.uk)

**0808 800 5000**

**Find out more**

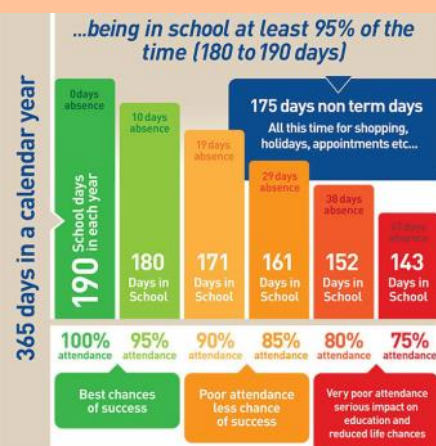
Or call children's services 0300 300 0117

## Attendance Matters!

Week Commencing 12th May  
(Whole school attendance target: 96.5%)

Actual Attendance: 96.80%

Late marks this week: 2



<https://www.nhs.uk/live-well/is-my-child-too-ill-for-school/>

# Golden Book

Bumble Bees	<p><b>Arlo T</b> for being a kind and patient friend to the other children.</p> <p><b>Jacob</b> for developing his confidence when writing independently, and being really proud of his work!</p> <p><b>Harvey</b> developing his confidence when writing independently, and being really proud of his work!</p>
Ivy Bees	<p><b>Charlotte B</b> for going so quickly and enthusiastically to bell ringing club this week.</p> <p><b>All of Y6</b> for completing all of their SATs papers with such calm confidence.</p>
EARA	<p><b>Nathan</b> for always helping with tidying up time. <i>Nominated by Dan Y5 and Lucy Y6.</i></p> <p><b>All of Reception Class</b> for always helping out with lunch games. <i>Nominated by Freddie &amp; Sammy Y5.</i></p> <p><b>Sky B</b> for always having a go at something she finds tricky. <i>Nominated by Helena Y4.</i></p>
Bee-Haviour	<b>Freddie K</b> for demonstrating courage this week.
Sports Bee	<b>Lexi</b> for showing brilliant focus and always being ready to learn in PE.



# Plea for donations of: Table lamps, fairy lights, cushions and plants!

At Brighstone, we would like to develop our classrooms into calmer, more neutral 'therapeutic classrooms'.

*"Therapeutic classrooms are a new approach that redefines the traditional classroom set up. The average UK classroom is bright, cluttered, overwhelming and outdated, and is not designed around the needs of our children today."*

*Children deserve to feel comfortable, safe and inspired, especially when we know there has been a rise in the numbers of children struggling with their social, emotional and mental health. Teachers up and down the country are reporting increases in school refusal, dysregulated behaviours, disengagement and low social skills. Making changes to the classroom can help."*

## What is a therapeutic classroom?

*"Therapeutic classrooms are welcoming, safe, inviting environments that cultivate learning through their design. They calm stress hormones and increase feelings of emotional safety, whilst meeting the emotional and mental health needs of the children. Therapeutic classrooms include calm spaces and flexible seating in every room as standard, and allow children to work where they feel most comfortable."*

*They take into consideration space, lighting, comfortability, accessibility, inclusivity and connective learning. Therapeutic classrooms are inspiring places that children want to be in and are underpinned by science. "*

<https://www.tpctherapy.co.uk/therapeutic-classrooms/>

To start this process, we are looking to introduce **table lamps** and **fairy lights** (so we can turn off or reduce the use of the bright overhead lighting), **cushions** (to make comfy seating areas) and **plants**.

As budget is tight, we are wondering if you have, or know of anyone who has, any spare table lamps, cushions, fairy lights and plants that you no longer need. To minimise the use of bright colours, ideally these new furnishings need to be in neutral colours.

Please contact the school office if you have anything that you would like to donate.

**Thank you!**







BRIGHSTONE SCHOOL ASSOCIATION

**Northcourt  
House  
Open Garden  
Teas and  
Cake**  
25.05.2025

**Bakers... we need you again!**

In return for coming to school in non-uniform PE clothers on FRIDAY 23 MAY, we need:

*Home-made cakes,  
cupcakes, cookies and all  
baked treats...*

Please bring to school office or Northcourt on Sunday...

Thank you for your support

merkyWall.com

# VOLUNTEERS NEEDED!

## NORTHCOURT HOUSE OPEN GARDENS SUNDAY 25TH MAY

The BSA run the lovely refreshments stand and we are looking for volunteers to help raise extra funds to top up the BSA money pot.

**We need people between 12:00 and 17:00.**

**Any amount of time would be appreciated!**

if youre able to help, message in your class groups so a member of the BSA can pick it up and pass it on and someone will be in touch.





*Grow a few  
extra  
for us!*



Remember to bear our plant sale in mind when growing your seeds over the next few weeks.

The BSA plant sale will be after half term...details to come soon!



*Parents,  
**Family members**  
& friends of Brighstone  
Primary School*

**Does your place of  
work offer the Match  
Funding Scheme?**

Get in touch with us if your employers could help our BSA fundraisers via email at [brighstoneschoolassoc@gmail.com](mailto:brighstoneschoolassoc@gmail.com)

### BSA ASTRA RECYCLING BIN

#### **We take...**

Clothes  
Shoes  
Bed Linen  
Accessories  
(Such as belts, hats & handbags)  
Soft Toys

#### **We can't take...**

Duvets or Cushions  
Off Cuts  
Carpet or Curtains



Find our recycling bin at the front entrance of the school.



# **INTERSCHOOL TEAM DRESSAGE**

**Thursday 19<sup>th</sup> June 2025**

**Little Kennerley Farm, Godshill**

By kind permission of Dawn and Hayley Webster



**It will be run over four sections:**

<b>Primary Schools</b>	<b>Pony club D Level Test or BD Prelim Test 1</b>
<b>Secondary Schools</b>	<b>BD Prelim Test 2 or BD Novice Test 2</b>

The entry fee is £8 per rider. Entries need to be sent to Karen Begley at Carisbrooke College. Payment by cheque, cash or bacs . Payment by cheque, cash or Bacs. Bacs payments to Account name: School Equestrian Competition, Number: 21359423, Sort code: 54-10-34

It is open to teams of 4 (with best three scores counting) and individuals.

Entries close on Wednesday 4<sup>th</sup> June. Times will be emailed to schools and put on the Isle of Wight Horse Community Facebook Page on Wednesday 11<sup>th</sup> June

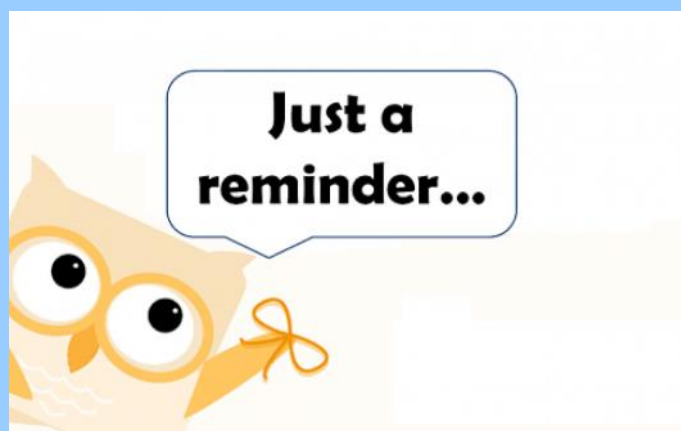
A representative of the school will need to accompany the team and be responsible for them during the competition. Please make sure that your school has insurance that will cover extra curricular activities (including horse riding) .

If you require any further information please contact Karen Begley at Carisbrooke College 524651 or [karen.begley@carisbrooke.iow.sch.uk](mailto:karen.begley@carisbrooke.iow.sch.uk)

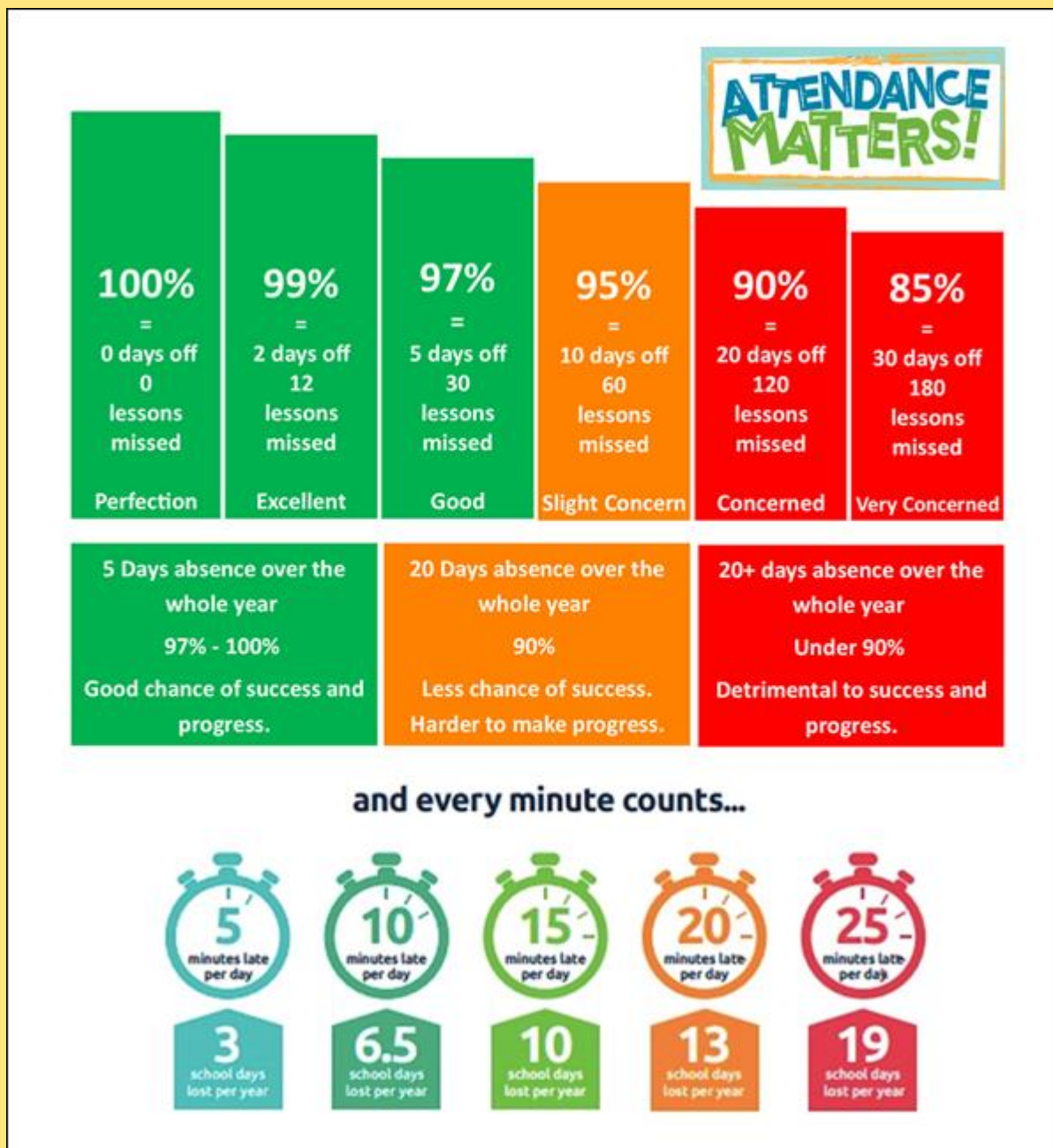
# Reminders

- PE Kit is navy blue top/jumper/hoodie with navy blue bottoms - **Branded items are not permitted**
- All hair accessories, socks, shoes and trainers must be in the school colours: navy blue, grey, black or white (no novelty socks)
- All long hair must be tied back (pony tail, bun, plaits etc...) to avoid the spreading of head lice
- No jewellery to be worn other than stud earrings, which must be removed or taped over on PE days
- Gates open at 8.25am and are locked at 8.30am, and in the afternoon, gates are opened at 2.55pm and locked at 3.10pm
- **As teachers are busy welcoming and supervising children first thing in the morning, please could all messages be given to Mrs Pelosi in the office, who will then pass them on to the teacher**
- Only **water** is allowed in drinks bottles, and snacks must be fruit only

Thank you!







At Brighstone Primary School we have high expectations for our children. This begins with attendance and punctuality as they are important life skills to learn.

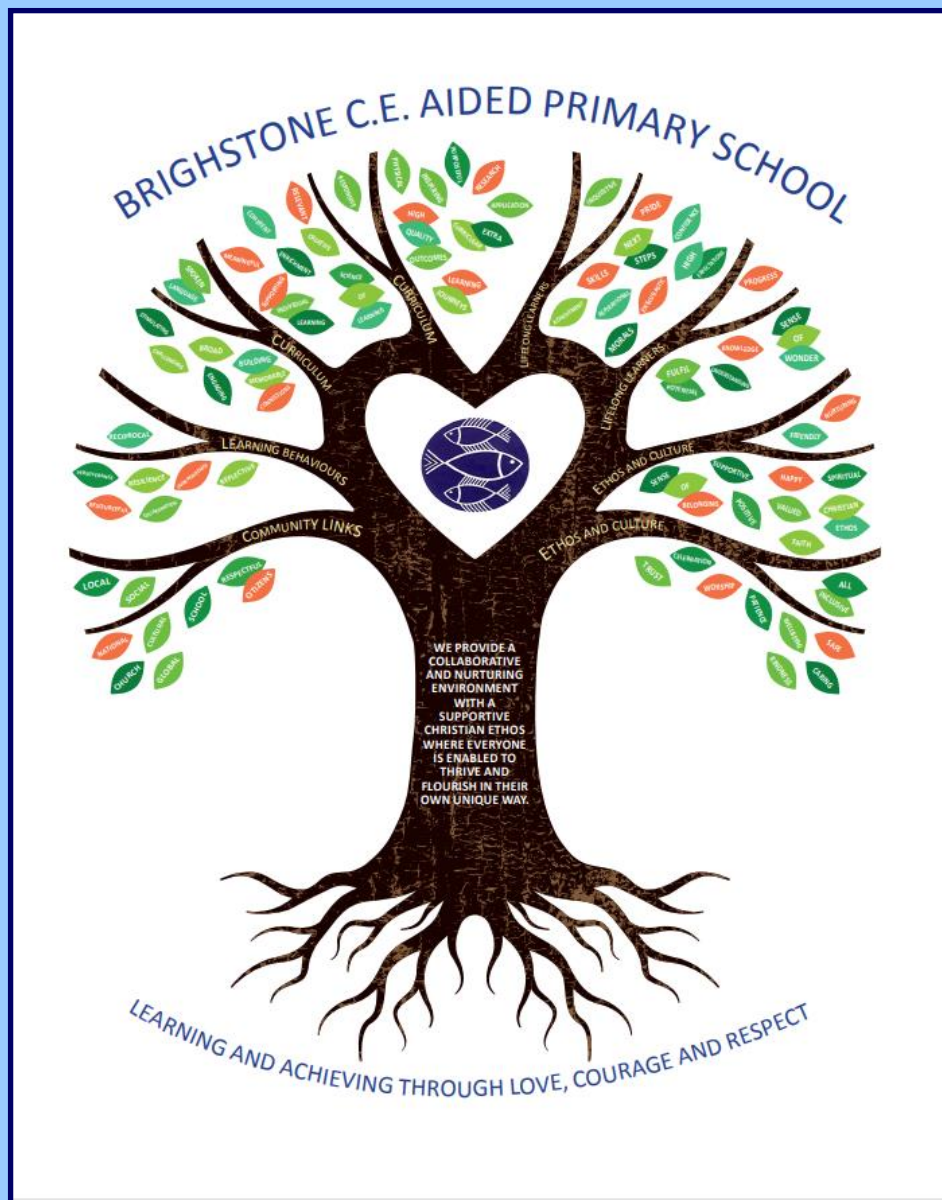
Good school attendance habits are best started early. Children learn from those around them and you as parents/carers set the standards and expectations for your child. Lateness has a negative impact; being late may disrupt already settled children and lessons, affect achievement and embarrass, worry or upset your child. We understand that there may be an occasional unavoidable instance where you are late, but if it happens frequently, please let us know if there may be something that we can do to help.

What to do if your child is unwell:

Check the NHS Guidance: <https://www.nhs.uk/live-well/is-my-child-too-ill-for-school/>

You should notify the school office before 9am every morning your child is unable to attend due to illness. You can either telephone on 740285 or email on [office@brighstoneprimary.org.uk](mailto:office@brighstoneprimary.org.uk). Telephone calls must be followed up in writing to authorise the (illness) absence.

# Our Vision Statement



A vision statement 'seeks to inspire and give direction to all stakeholders (staff, children, parents, governors and the wider community). It is an aspirational description of what an organisation would like to achieve or accomplish in the mid-term or long-term future. It is intended to serve as a clear guide for choosing current and future courses of action'.

Our vision statement works alongside our mission statement 'Learning and Achieving Through Love, Courage and Respect', which includes our values, to reflect and guide our culture, ethos and decision making. This is also on our website.

As a school, in 2020 we worked together with a range of stakeholders to write our vision statement, and we decided to create a visual vision statement to make it stand out and be memorable. Each part of the image has been carefully chosen to represent our school:

Our values, as part of the mission statement (tagline), are the roots and foundation that feed and nourish our school.

The vision statement is the main body (trunk) that guides all our actions.

The branches reflect the different aspects of life in our school.

The leaves show examples of how these aspects are shown.

The school logo in the centre of the tree represents the Christian ethos that is at the heart of everything we do.





## Respect Charter

### at Brighstone CE Aided Primary School

At Brighstone CE Aided Primary School we believe staff, parents and children are entitled to a safe and protective environment in which to learn and work. We strive to ensure that our school offers a warm and nurturing environment. All members of the school community and visitors should demonstrate mutual respect, to feel safe, work together and to use restorative approaches as the foundation of our practice. Any behaviour that may lead to feelings of harassment, alarm or distress to members of our community, will not be tolerated and action taken.

#### Expectations

- That all adults set a good example to children at all times, showing them how to get along with all members of the school and the wider community.
- That no one - staff, governors, parents, carers, volunteers or children - be subjected to abusive behaviour or any form of threats from visitors on the school premises.
- That physical attacks and threatening behaviour, abusive or insulting language verbal or written (including on social media), to staff, governors, parents, carers, volunteers, children and other users of the school premises will not be tolerated and may lead to a ban from school premises and/or police action.

#### Types of behaviour that are considered serious and unacceptable

This is not an exhaustive list but seeks to provide illustrations of such behaviour:

- Shouting, either in person or over the telephone
- Speaking in an aggressive/threatening tone
- Physically intimidating, e.g. standing very close
- The use of aggressive hand gestures/exaggerated movements
- Physical threats
- Shaking or holding a fist towards another person
- Swearing and name calling
- Pushing
- Slapping, punching, hitting or kicking
- Racist, homophobic or other hateful behaviour
- Sexist comments or sexual innuendo
- Disrespecting religion or belief
- Inappropriate communications (posting on Social Networking sites, emails or letters, etc.) which could bring the school into disrepute or be deemed as bullying, harassment and/or a hate-related

The school reserves the right to take any necessary actions to ensure that members of the school community are not subjected to any form of abuse in line with policy and procedure. If you choose to engage in these behaviours you may be asked to leave the site or the police may be called.

**Thank you for your understanding and support**



If your message is **urgent** or about **attendance** contact Mrs Pelosi in the **office**:  
**01983 740285**  
office@brighstoneprimary.org.uk  
Office Hours 8am - 4pm

If you would like to speak with the **Headteacher** Mrs Lennon, you can find her at the school gate every morning or you can call 740285 to make an appointment with her



For **general enquiries** you can call or email the office, text the school messaging service or send a message to our school **Facebook** page: <https://www.facebook.com/BrighstoneCEPrimarySchool>  
*Our Facebook page is open so you do not need a personal account to view it*

If you have concerns about your child's **learning** and progress, email the class teacher in the first instance and allow at least 1 working day for a reply:

Years R, 1 & 2 - teacher.bumblebee@brighstoneprimary.org.uk  
Years 3 & 4 - teacher.honeybee@brighstoneprimary.org.uk  
Years 5 & 6 - teacher.ivybee@brighstoneprimary.org.uk

If you have concern regarding **safeguarding** or your **child's mental health and wellbeing** please contact Mrs Jones. You can speak to her on the playground every morning, call into the school office or email m.jones@brighstoneprimary.org.uk  
safeguarding@brighstoneprimary.org.uk

Our **Newsletter** is published every Friday with key information for parents and carers. You can find it on our school website: <https://www.brighstoneprimary.org.uk/category/the-buzz/>

## Contact us



If you have a **safeguarding** concern about a child outside of school hours you can call the police on 999 if you feel they are at risk of immediate harm or contact Children's Services on 0300 300 0117

Please be reminded that all children need to wear the correct PE kit on PE days.  
The correct PE kit is also needed for sports clubs.  
Socks and hair accessories must be in the school colours.

### School Day Timings

The school day is as follows:

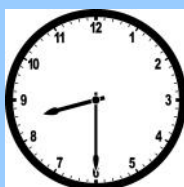
8.25am: Gates open

8.30am: School starts

3pm: School ends

3.10pm: Gates close

Many thanks.



## Key dates this year

- Friday 23rd May: Last day of term; non-uniform day for cakes for Northcourt Open Gardens (BSA)
- Tuesday 3rd June: Back to school; Honey Bee trip to Brading Roman Villa
- Monday 9th June: Statutory consultation for Resourced Provision at Brighstone ends
- Friday 27th June: Sports Day
- Saturday 5th July: Mardi Gras parade in Ryde
- Tuesday 8th July: Transition Day
- Friday 11th July: Y6 Leavers' Service in Portsmouth; Summer Sizzler
- Tuesday 15th July: Parents evening
- Wednesday 16th - Friday 18th July: Y6 London residential
- Thursday 24th July: Whole school Forest Day (further details to follow)
- Friday 25th July: Last day of term

This list is regularly updated.

## School Term Dates for 2024-2025

Please note that the school will be closed on the following days in this academic year:

Day 1: Monday 2nd September 2024

Day 2: Tuesday 3rd September 2024

Day 3: Monday 2nd June 2025

Day 4: Monday 28th July 2025

Day 5: Tuesday 29th July 2025

Term dates are available on our school website.

