

The Buzz

25th April



Learning and Achieving Through
Love, Courage and Respect

Dear parents, carers and children,

Welcome to the summer term! I hope everyone had a lovely Easter with friends and family.

You will notice that the **colours of the Buzz** have changed again. It is currently white and gold to reflect the Christian period of Eastertide. These colours symbolise the joy and glory of Christ's resurrection and are used to signify new life and victory over death.

Y6 had a fantastic first day back as they had a wonderful trip to the **UKSA**, as part of the UKSA's free activity sessions that they kindly offer to all Y6 children across the island. Here is Mrs Sharp's report of the trip:

"After donning our very baggy/very tight wetsuits, wind-jackets and buoyancy aids and listening to a safety briefing, we had a ride on the orange inflatable support boats past the floating bridge and outer sea wall to where our dinghies were moored.

We were paired up in the small boats and our first job was to unfurl the sail while we were towed to an area where we could pick up the wind. Then they disconnected us from the ropes and we were free! We quickly worked out which way to push the tiller in order to steer straight and we took turns steering/sunbathing/enjoying the view as we sailed in the Solent. Every now and then we were rounded up by the (four) support boats and towed back so we could turn around and have another run.

At the end of the session, we were towed in a long line back to the centre where the task of peeling off our wetsuits could begin! The wind, clouds and sun were perfectly proportioned to be enjoyable rather than uncomfortable and the UKSA staff were friendly, supportive and encouraging."



See more photos on our Facebook page.

It is always a joy when children come and show me their work that they are proud of. Today, **Helena in Y4** very proudly read her writing to me, from the point of view of the Lone Robot in the short animation 'Origins'. It is now displayed in our Proud Gallery, and can be read on p4 of this Buzz. I am sure you will agree that it is an excellent piece of writing, and we all want to skip off into the forest with the Lone Robot!



You will have received an email about our upcoming **SIAMS inspection** on Tuesday 29th April. If you would like to know more about what this entails, please see the information on the link: <https://www.churchofengland.org/about/education-and-schools/church-schools-and-academies/siams-inspections>



The **BSA** will be holding their AGM on Monday evening: all are welcome. They are also looking for volunteers for Wolverton, as well as keen cake bakers! See p6-7 for more information about these.

Hot off the press: we have just found out that the consultation for the expansion of SEND places, including the **proposed Resourced Provision** at Brighstone, will start on 2nd May until 9th June. See separate email sent this afternoon.

I hope everyone has a lovely weekend.

With best wishes, Mrs Lennon and the Brighstone team



Collective Worship

This week, we been focusing on Friendship: Sticking Together

In the Bible there is a book of wise sayings called The Book of Proverbs. One saying is:
"There is a friend who sticks closer than a brother." Proverbs 18.24

Just like the strands in a friendship bracelet, Christians believe that Jesus is woven into their lives and will be their closest friend, even closer than the closest brother or sister.

I have put some strands of wool on our main reflection table, for children to make friendship bracelets for each other. Thank you to Anna and Lucy for cutting these up, and thank you to Lilli for creating some instructions for people to follow!

There is a Friendship acrostic poem on p2 of this Buzz, that we used in our CW this week.



Prayer for friendship

Dear Lord Jesus,
You have shown us through the Bible that you want to be woven into our lives as our friend.
Thank you that we can talk to you at any time because you are always close to us.
Thank you for our friends – we are stronger together!
Amen



School Dinners

Children in **Year R, 1 and 2** are entitled to a 'universal' **free** school meal everyday.

Children in Years 3-6 are charged at **£3.20** per day. Yoghurt, fruit, salad and jacket potatoes are available every day.

Baguettes available on Tuesdays and Thursday - Ham, Cheese or Tuna

Week 2	Monday	Tuesday	Wednesday	Thursday	Friday
Option 1	Macaroni Cheese	BBQ Chicken Pizza	Roast Gammon	Beef Bolognese	Fish Fingers
Option 2	Veggie Meatballs	Meatless Pizza	Veggie Roast	Veggie Fajita	Quorn Dippers
Dessert	Cake	Jelly	Flapjack	Ice Cream	Cake

Poetry Corner

Friendship is...

Finding things to do together
 Relying on each other
 Impossible on your own
 Enjoying being together
 Never selfish
 Depending on someone else
 Sharing hopes and dreams
 Happiness and laughter
 Including others
 Precious

Which line
means more
to you?
Why?



Reading Recommendations

Each week, we include a book recommendation from a child and/or adult.

This week, Mrs Eggleton recommends *The Berlin Sisters* by Soraya Lane.



I recommend this book because it was written from the German's point of view about the war, and how the whole family in the book came to work for the resistance to overthrow Hitler. The sisters smuggled Jewish children out of Berlin for their onward journey to safety out of the country.
 It was historically interesting while also being exciting to read.

Safeguarding

If you have a concern about a child you can call the police on 999 if you feel they are at risk of immediate harm

You can contact the NSPCC:

Contact the NSPCC Helpline

If you have any concerns at all about a child's safety or wellbeing, don't hesitate to contact us.

Call us or email help@nspcc.org.uk

0808 800 5000

Find out more

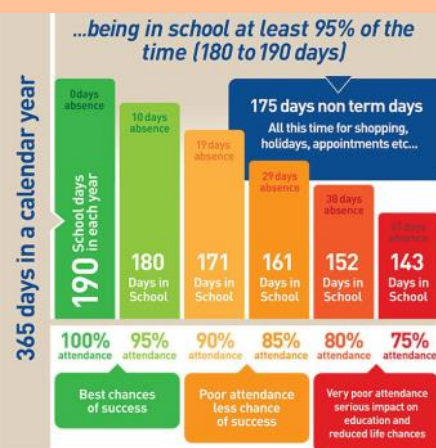
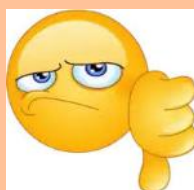
Or call children's services 0300 300 0117

Attendance Matters!

Week Commencing 24th April
 (Whole school attendance target: 96.5%)

Actual Attendance: 91.36%

Late marks this week: 9



<https://www.nhs.uk/live-well/is-my-child-too-ill-for-school/>

Golden Book

Bumble Bees	<p>Arlo T and Austin for starting to read Ditties, using their 'Fred Talk, read the word' to read whole stories now.</p> <p>Forbes for showing really good learning behaviours and making positive choices.</p> <p>Hudson for his concentration and focus during RWI and for his super neat handwriting.</p>
Honey Bees	<p>Theo for his concentration in Maths this week.</p> <p>Sky B for perseverance in Maths on her fractions work.</p> <p>All of Y4 for their resilience, determination and teamwork on their recent residential trip.</p> <p>Kaiden for settling in well at Brighstone and not being afraid to give things a go!</p>
Ivy Bees	<p>Charlotte B for starting the summer term on such a positive note, working hard and enjoying it!</p> <p>Reuben for taking the initiative to sort and organise things in the classroom.</p> <p>Leland for returning to school with a very positive mindset and has been participating in lessons successfully.</p>
Bee-Haviour	<p>Forbes for turning things around and showing a huge improvement in behaviour.</p>
EARA	<p>Alyssa for making Kaiden feel welcome. <i>Nominated by Helena</i></p>



Helena's Letter

Helena was very proud of her writing in English, based on the short animation 'Origins'. I am sure you can see why!

This piece of work has also been displayed in our Proud Gallery. Well done, Helena!

L.O: to write a persuasive letter 25/4/25

Success Criteria	Me	Teacher
have set out the addresses correctly and included the date		
have an introduction saying why I am writing my letter		
have included a rhetorical question e.g. Do you think want to take away my freedom		
emotive language- I love my new life here in the forest!		
have included points about why I would prefer to live in the forest e.g. I love the soothing sounds of the forest, the friendly creatures and the crunchy leaves to walk on.		

TLD: Suddenly, I wanted to leave this peculiar place. (1/11)

The Factory
Next to the Forest
UK

The Forest
Next to the Factory
UK

25th April 2025

Dear Robot family

I am writing to tell you that I really ~~not~~ want to stay in the forest. I'll cry my heart out if I leave because the forest is ~~where~~ where I belong!!! I miss being in the forest where I am, running about playing on the orange, crunchy leaves and being free instead of working all day long. Come and join me, you'll love it I promise. Why ~~won't~~ won't you come ^{adventure with} and join me? The noisy factory is too much to bear for us robots, come and be free with me. It's so unfair that I might have to leave the beautiful forest. It is my home place. You always wanted me to be happy didn't you? Well in the forest I am happy, I am peaceful here. Don't carry that heavy burden of work with you, break free and you will be able to have sun from sunrise to sunset. Explore the world with me, come with me.

Love from your dearest friend,
The Little Robot



Plea for donations of: Table lamps, fairy lights, cushions and plants!

At Brighstone, we would like to develop our classrooms into calmer, more neutral 'therapeutic classrooms'.

"Therapeutic classrooms are a new approach that redefines the traditional classroom set up. The average UK classroom is bright, cluttered, overwhelming and outdated, and is not designed around the needs of our children today."

Children deserve to feel comfortable, safe and inspired, especially when we know there has been a rise in the numbers of children struggling with their social, emotional and mental health. Teachers up and down the country are reporting increases in school refusal, dysregulated behaviours, disengagement and low social skills. Making changes to the classroom can help."

What is a therapeutic classroom?

"Therapeutic classrooms are welcoming, safe, inviting environments that cultivate learning through their design. They calm stress hormones and increase feelings of emotional safety, whilst meeting the emotional and mental health needs of the children. Therapeutic classrooms include calm spaces and flexible seating in every room as standard, and allow children to work where they feel most comfortable."

They take into consideration space, lighting, comfortability, accessibility, inclusivity and connective learning. Therapeutic classrooms are inspiring places that children want to be in and are underpinned by science. "

<https://www.tpctherapy.co.uk/therapeutic-classrooms/>

To start this process, we are looking to introduce **table lamps** and **fairy lights** (so we can turn off or reduce the use of the bright overhead lighting), **cushions** (to make comfy seating areas) and **plants**.

As budget is tight, we are wondering if you have, or know of anyone who has, any spare table lamps, cushions, fairy lights and plants that you no longer need. To minimise the use of bright colours, ideally these new furnishings need to be in neutral colours.

Please contact the school office if you have anything that you would like to donate.

Thank you!





BSA

BRIGHSTONE SCHOOL ASSOCIATION

Meeting and AGM

MONDAY 28 APRIL 19:00

BRIGHSTONE PRIMARY SCHOOL

Made with PosterMyWall.com

Bakers!

WE NEED YOU!

We have two big fundraising events in May which centers around lovely homemade cake donations.

Our first is on Saturday 10th May for Wolverton Folk & Blues Fair.

We would appreciate any time you can spare to make homemade cakes, slices, biscuits or other yummy treats to push our fundraising efforts for our fantastic school and its pupils and teachers and bring into school on Friday 9th May.

Thank you

VOLUNTEERS NEEDED!

WOLVERTON FOLK & BLUES FESTIVAL

SATURDAY 10TH MAY

The BSA run the tea tent and children's activities at the festival and we are looking for lots of helpers to help raise as much as we can to support the school in the coming year!

We have shifts that

11:00-14:00, 14:00-17:00 & 17:00-1900

if youre able to help, message in your class groups so a member of the BSA can pick it up and pass it on and someone will be in touch.

Wolverton Folk & Blues

SATURDAY 10TH MAY 2025 • 11.30 AM - 8.00 PM

at Wolverton Manor, Shorwell, Isle of Wight. PO30 3JS

West Weston's Bluesonics • Stompin' Dave Electric Trio
 Piskey Led • The Hanging Baskets • Something About Mondays
 The Damien Paul Band • The Bohemians • Chasing Scarlett • The Ohmz
 East Cowes Shanty • The RUG Band • Lee Signey • Razor Jake
 Ruby • Hugh Wright sings Dylan • more acts to be announced..!

Family Friendly Kids Activities Local Food Stalls Beer Tent Tea Tent

TICKETS: £12 in advance, £15 on the gate. Under 12's FREE

Available from: The Village Shop, Brighstone, Briddlesford Farm Shop,
 Waterstones, Newport, Orchard Brothers, Freshwater Bay. Sponsored by:

WolvertonFolkandBlues e: iwfoodnfolk@gmail.com

IN AID OF CANCER SUPPORT AND BRIGHSTONE PRIMARY SCHOOL



*Parents,
Family members
& friends of Brighstone
Primary School*

Does your place of work offer the Match Funding Scheme?

Get in touch with us if your employers could
help our BSA fundraisers via email at
brighstoneschoolassoc@gmail.com

BSA ASTRA RECYCLING BIN

We take...

Clothes
Shoes
Bed Linen
Accessories
(Such as belts, hats & handbags)
Soft Toys

We can't take...

Duvets or Cushions
Off Cuts
Carpet or Curtains

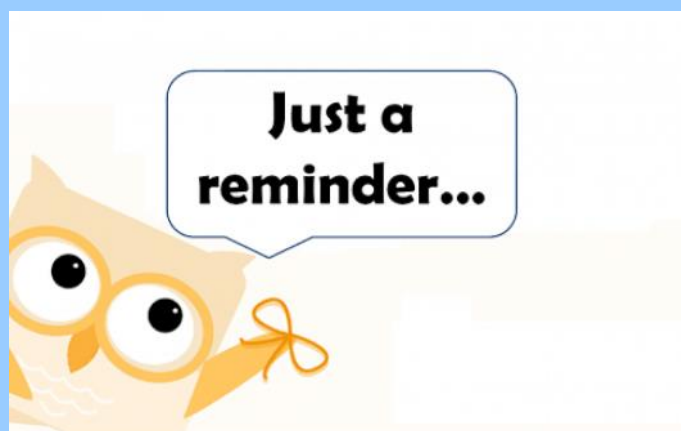


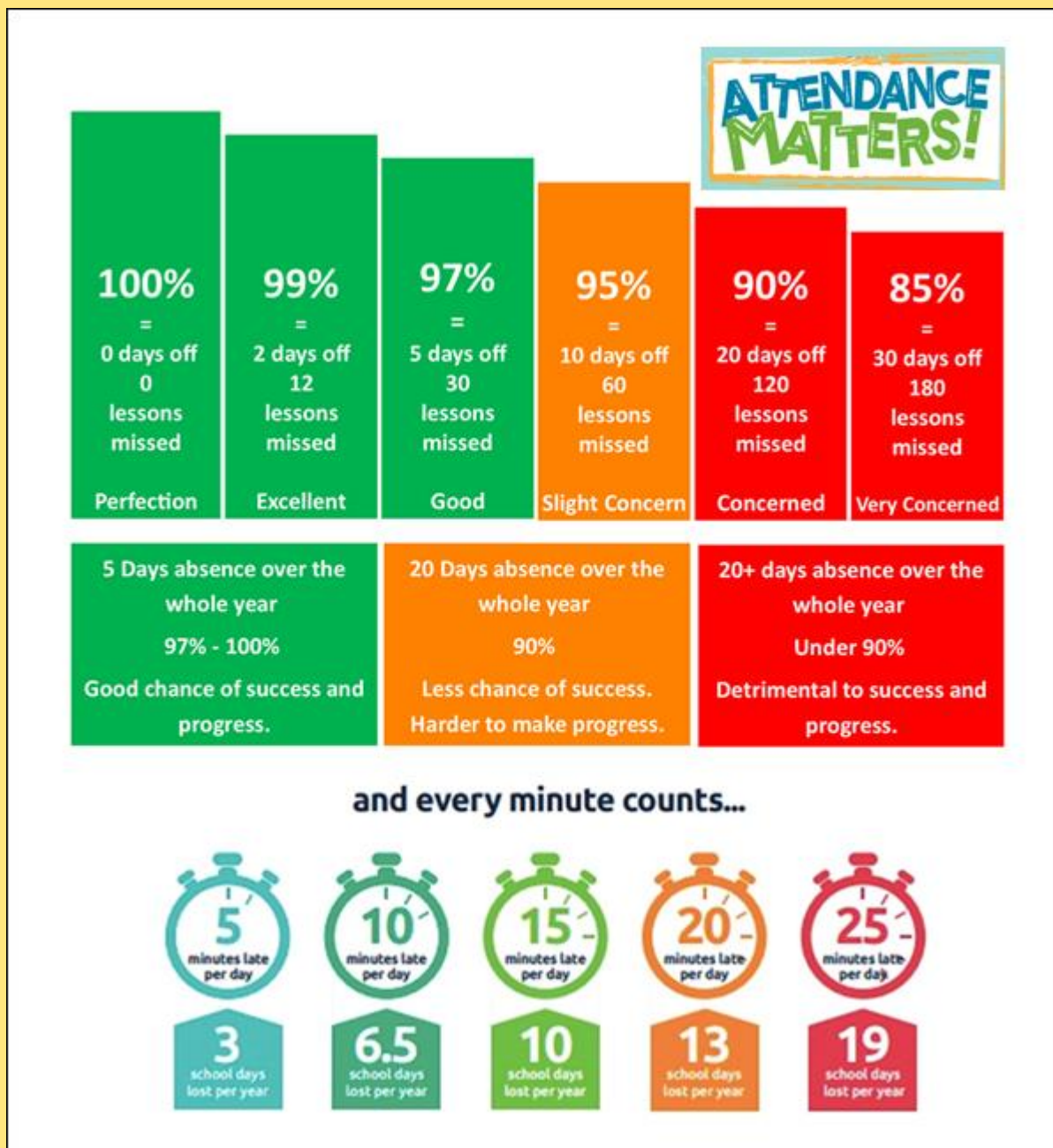
Find our recycling bin at the front entrance of the
school.

Reminders

- PE Kit is navy blue top/jumper/hoodie with navy blue bottoms - **Branded items are not permitted**
- All hair accessories, socks, shoes and trainers must be in the school colours: navy blue, grey, black or white (no novelty socks)
- All long hair must be tied back (pony tail, bun, plaits etc...) to avoid the spreading of head lice
- No jewellery to be worn other than stud earrings, which must be removed or taped over on PE days
- Gates open at 8.25am and are locked at 8.30am, and in the afternoon, gates are opened at 2.55pm and locked at 3.10pm
- **As teachers are busy welcoming and supervising children first thing in the morning, please could all messages be given to Mrs Pelosi in the office, who will then pass them on to the teacher**
- Only **water** is allowed in drinks bottles, and snacks must be fruit only

Thank you!





At Brighstone Primary School we have high expectations for our children. This begins with attendance and punctuality as they are important life skills to learn.

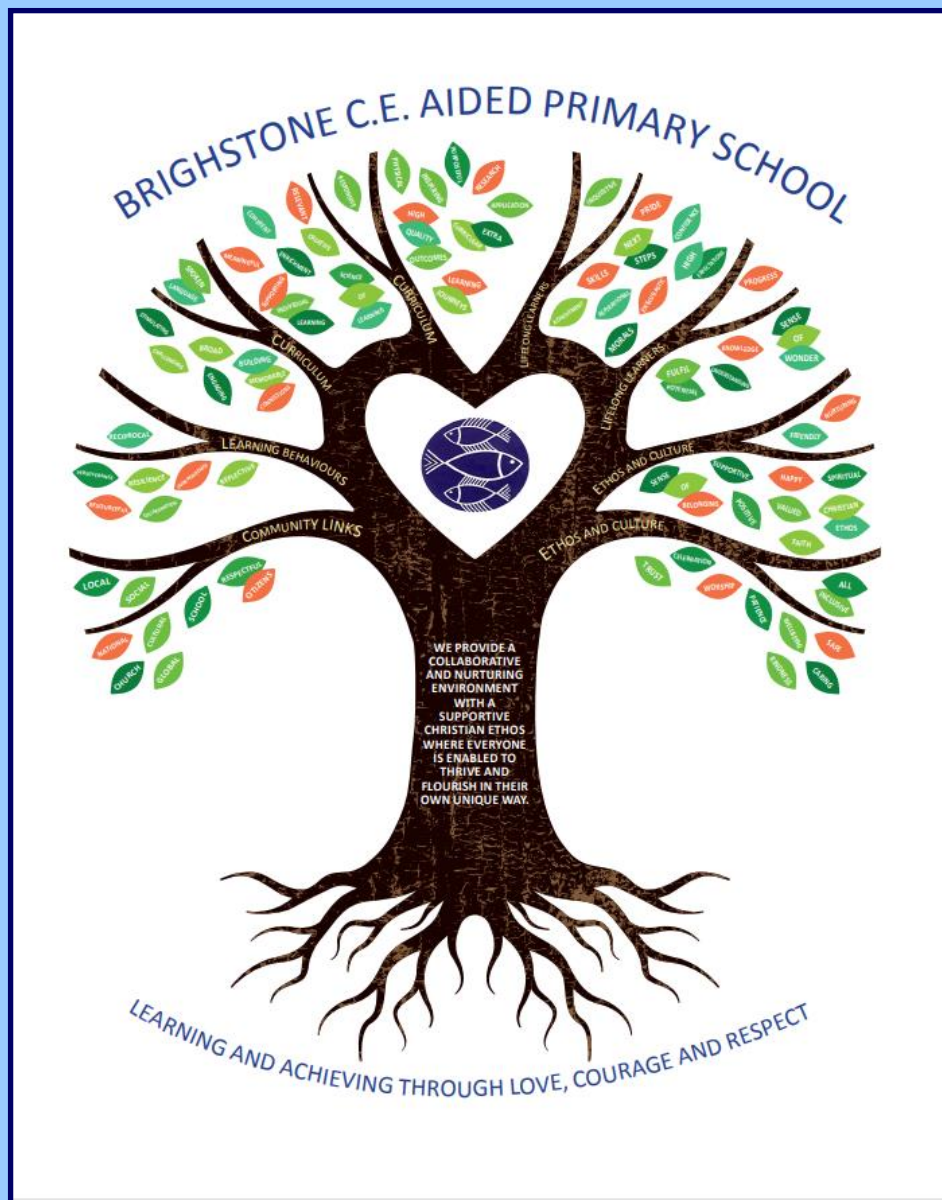
Good school attendance habits are best started early. Children learn from those around them and you as parents/carers set the standards and expectations for your child. Lateness has a negative impact; being late may disrupt already settled children and lessons, affect achievement and embarrass, worry or upset your child. We understand that there may be an occasional unavoidable instance where you are late, but if it happens frequently, please let us know if there may be something that we can do to help.

What to do if your child is unwell:

Check the NHS Guidance: <https://www.nhs.uk/live-well/is-my-child-too-ill-for-school/>

You should notify the school office before 9am every morning your child is unable to attend due to illness. You can either telephone on 740285 or email on office@brighstoneprimary.org.uk. Telephone calls must be followed up in writing to authorise the (illness) absence.

Our Vision Statement



A vision statement 'seeks to inspire and give direction to all stakeholders (staff, children, parents, governors and the wider community). It is an aspirational description of what an organisation would like to achieve or accomplish in the mid-term or long-term future. It is intended to serve as a clear guide for choosing current and future courses of action'.

Our vision statement works alongside our mission statement 'Learning and Achieving Through Love, Courage and Respect', which includes our values, to reflect and guide our culture, ethos and decision making. This is also on our website.

As a school, in 2020 we worked together with a range of stakeholders to write our vision statement, and we decided to create a visual vision statement to make it stand out and be memorable. Each part of the image has been carefully chosen to represent our school:

Our values, as part of the mission statement (tagline), are the roots and foundation that feed and nourish our school.

The vision statement is the main body (trunk) that guides all our actions.

The branches reflect the different aspects of life in our school.

The leaves show examples of how these aspects are shown.

The school logo in the centre of the tree represents the Christian ethos that is at the heart of everything we do.



Respect Charter

at Brighstone CE Aided Primary School

At Brighstone CE Aided Primary School we believe staff, parents and children are entitled to a safe and protective environment in which to learn and work. We strive to ensure that our school offers a warm and nurturing environment. All members of the school community and visitors should demonstrate mutual respect, to feel safe, work together and to use restorative approaches as the foundation of our practice. Any behaviour that may lead to feelings of harassment, alarm or distress to members of our community, will not be tolerated and action taken.

Expectations

- That all adults set a good example to children at all times, showing them how to get along with all members of the school and the wider community.
- That no one - staff, governors, parents, carers, volunteers or children - be subjected to abusive behaviour or any form of threats from visitors on the school premises.
- That physical attacks and threatening behaviour, abusive or insulting language verbal or written (including on social media), to staff, governors, parents, carers, volunteers, children and other users of the school premises will not be tolerated and may lead to a ban from school premises and/or police action.

Types of behaviour that are considered serious and unacceptable

This is not an exhaustive list but seeks to provide illustrations of such behaviour:

- Shouting, either in person or over the telephone
- Speaking in an aggressive/threatening tone
- Physically intimidating, e.g. standing very close
- The use of aggressive hand gestures/exaggerated movements
- Physical threats
- Shaking or holding a fist towards another person
- Swearing and name calling
- Pushing
- Slapping, punching, hitting or kicking
- Racist, homophobic or other hateful behaviour
- Sexist comments or sexual innuendo
- Disrespecting religion or belief
- Inappropriate communications (posting on Social Networking sites, emails or letters, etc.) which could bring the school into disrepute or be deemed as bullying, harassment and/or a hate-related

The school reserves the right to take any necessary actions to ensure that members of the school community are not subjected to any form of abuse in line with policy and procedure. If you choose to engage in these behaviours you may be asked to leave the site or the police may be called.

Thank you for your understanding and support

If your message is **urgent** or about **attendance** contact Mrs Pelosi in the **office**:
01983 740285
office@brighstoneprimary.org.uk
Office Hours 8am - 4pm

If you would like to speak with the **Headteacher** Mrs Lennon, you can find her at the school gate every morning or you can call 740285 to make an appointment with her



For **general enquiries** you can call or email the office, text the school messaging service or send a message to our school **Facebook** page: <https://www.facebook.com/BrighstoneCEPrimarySchool>
Our Facebook page is open so you do not need a personal account to view it

If you have concerns about your child's **learning** and progress, email the class teacher in the first instance and allow at least 1 working day for a reply:

Years R, 1 & 2 - teacher.bumblebee@brighstoneprimary.org.uk
Years 3 & 4 - teacher.honeybee@brighstoneprimary.org.uk
Years 5 & 6 - teacher.ivybee@brighstoneprimary.org.uk

If you have concern regarding **safeguarding** or your **child's mental health and wellbeing** please contact Mrs Jones. You can speak to her on the playground every morning, call into the school office or email m.jones@brighstoneprimary.org.uk
safeguarding@brighstoneprimary.org.uk

Our **Newsletter** is published every Friday with key information for parents and carers. You can find it on our school website: <https://www.brighstoneprimary.org.uk/category/the-buzz/>

Contact us



If you have a **safeguarding** concern about a child outside of school hours you can call the police on 999 if you feel they are at risk of immediate harm or contact Children's Services on 0300 300 0117

Please be reminded that all children need to wear the correct PE kit on PE days.
The correct PE kit is also needed for sports clubs.
Socks and hair accessories must be in the school colours.

School Day Timings

The school day is as follows:

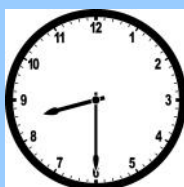
8.25am: Gates open

8.30am: School starts

3pm: School ends

3.10pm: Gates close

Many thanks.



Key dates this year

- Tuesday 29th April: SIAMS inspection
- W/c Monday 12th May: Y6 SATs week
- Friday 23rd May: Last day of term
- Tuesday 3rd June: Back to school
- Friday 27th June: Sports Day
- Saturday 5th July: Mardi Gras parade in Ryde
- Tuesday 8th July: Transition Day
- Friday 11th July: Y6 Leavers' Service in Portsmouth; Summer Sizzler
- Tuesday 15th July: Parents evening
- Wednesday 16th - Friday 18th July: Y6 London residential
- Friday 25th July: Last day of term

This list is regularly updated.

School Term Dates for 2024-2025

Please note that the school will be closed on the following days in this academic year:

Day 1: Monday 2nd September 2024

Day 2: Tuesday 3rd September 2024

Day 3: Monday 2nd June 2025

Day 4: Monday 28th July 2025

Day 5: Tuesday 29th July 2025

Term dates are available on our school website.

