

# The Buzz

## 7th March



Learning and Achieving Through  
Love, Courage and Respect

Dear parents, carers and children,



The children had a 'flipping' good time during our pancake races on Tuesday! Each hive raced each other in a relay, trying to flip the pancakes as they went. They did really well. We then had a discussion the following day all about the start of Lent and the significance for Christians of this period of time. We also discussed the use of the colour purple and what it represents at this time of year in the Christian calendar. You will notice that our Buzz has also changed to purple to reflect the period of Lent.



We had a fantastic **World Book Day** yesterday! As the theme was 'Read Your Way', we started with an assembly talking about what we like reading and how we like reading. We saw the wonderful photos that some of the children had sent in of them reading in their way: we saw children reading to their cat or the local pheasants, reading in the swimming pool, reading while sitting on The Dragon Tree, reading while eating their breakfast and even reading while hanging upside down!



Each class visited Brighstone Community Library where we were made very welcome by Boni and Miriam. While being all snuggly in our pjs and comfy clothes, we listened to stories, heard jokes, made predictions and joined in activities about the Dewey Decimal System. Ivy Bee class even had the opportunity to explore the museum where they saw photos of our school in the 19th century! There are lots of books to borrow or even buy.

In the afternoon, children took part in a World Book Day quiz in their hives. Well done to the winners: Blue hive!

As well as the academic side of education, we also focus on children's personal, moral and social development. It is always wonderful to see when children want to take on responsibility for something themselves. A couple of week's ago, **Lilli, Rosie, Fred, Martha and Charlotte** in Ivy Bee class noticed that the grass and some of the flowers were being trampled on, so they wanted to do something about it. They have called themselves the Nature Protectors, and have created a PPT that they will show in Collective Worship next week. They worked together to take photos of the different areas to include in their PPT, along with information about what the children should and shouldn't do to look after nature in the school grounds. Well done, children, for being great ambassadors for nature!



The parents of KS2 children will have received an email today from Mrs Jones about the use of **Snapchat** by some children in Honey Bee and Ivy Bee classes, and the potential dangers associated with primary age children using this app (that has a minimum age rating of 13). Please do read this important email.

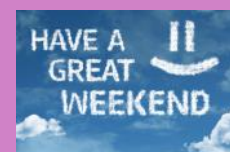


I have had reports of people parking on double-yellow lines, turning around in the road outside school and parking in the bus layby at the start and end of the school day. This could potentially put a child's life in danger or cause a road traffic incident. While it isn't in our remit to monitor the use of the road, I would ask you to please be mindful of **safety**. There is plenty of free parking in Warnes Lane car park, as well as along New Road and the surrounding roads.

I would also like to ask you to use the footpath when coming to the office, rather than walking through the school car park, for safety reasons. Thank you for your understanding.

I hope you have a lovely weekend.

With best wishes,  
Mrs Lennon and the Brighstone team



## Collective Worship

This week, we been focusing on Forgiveness: Turning Over a New Leaf

If a person is forgiven for something that they have done that is wrong, they usually want to show that they mean to behave differently in future. Sometimes we call this 'turning over a new leaf'. It is a fresh start.



We watched the Bible story of Zacchaeus, in which he showed that he turned over a new leaf after Jesus visited his house.



Think about something you have needed to be forgiven for. How have you turned over a new leaf and changed your behaviour to show that you are really sorry?

### The New Leaf Prayer



Father God,  
You offer forgiveness to us today  
Just as you did to Zacchaeus 2000  
years ago.  
Like Zacchaeus, help us to turn over a  
new leaf and begin again.  
Help us to show others we are sorry  
by the way we sometimes behave.  
Amen

## School Dinners

Children in **Year R, 1 and 2** are entitled to a 'universal' **free** school meal everyday.

Children in Years 3-6 are charged at **£3.20** per day. Yoghurt, fruit, salad and jacket potatoes are available every day.

Week 1	Monday	Tuesday	Wednesday	Thursday	Friday
Option 1	Macaroni Cheese	Beef Burger	Roast Gammon	BBQ Chicken Pizza	Fish Fingers
Option 2	Cheesy Bean Burrito	Quorn Burger	Quorn	Cheese Pizza	Veggie Fingers
Dessert	Flapjack	Apple Crumble	Rice Pudding	Jelly	Brownie

### Poetry Corner

#### A Spike of Green

When I went out  
The sun was hot,  
It shone upon  
My flowerpot.

And there I saw  
A spike of green  
That no one else  
Had ever seen!

On other days  
The things I see  
Are mostly old  
Except for me.

But this green spike  
So new and small  
Had never yet  
Been seen at all!

This week, the children sowed their sunflower seeds as part of the Down Syndrome UK charity Sunflower Challenge. They will be nurturing them in school before taking them home on 21st March (Down Syndrome Day) in return for a donation of £1.



Barbara Baker

### Reading Recommendations

Each week, we include a book recommendation from a child and/or adult.

This week, Forbes and Max recommend the Pokemon book.

We recommend this book because there are different types of Pokemon and there are Legendaries. There are so many awesome Pokemon characters to see. People might like the different Pokemon characters. It's got over 800 characters!



### Safeguarding

If you have a concern about a child you can call the police on 999 if you feel they are at risk of immediate harm

You can contact the NSPCC:

#### Contact the NSPCC Helpline

If you have any concerns at all about a child's safety or wellbeing, don't hesitate to contact us.

Call us or email [help@nspcc.org.uk](mailto:help@nspcc.org.uk)

**0808 800 5000**

**Find out more**

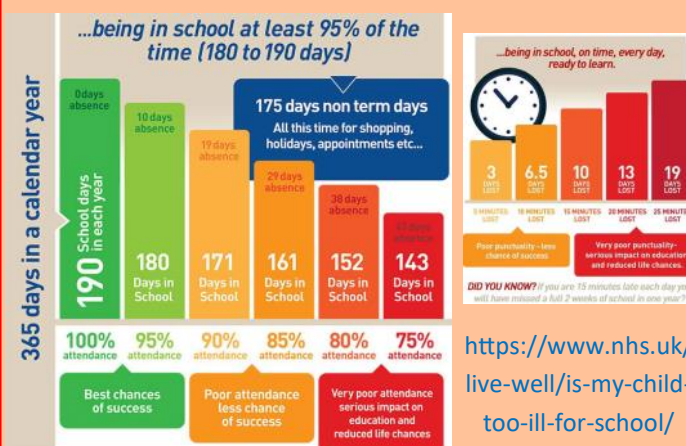
Or call children's services 0300 300 0117

#### **Attendance Matters!**

Week Commencing 3rd March 2025  
(Whole school attendance target: 96.5%)

Actual Attendance: 94.77%

Late marks this week: 9



# Golden Book

Bumble Bees	<b>Elsie-Jayne</b> and <b>Mariia</b> for working so hard at learning their sounds in RWI. <b>Ellis</b> for making good choices with his Busy Bee time and choosing to enjoy reading a book.
Honey Bees	<b>Theo</b> for trying hard with his learning, particularly his writing and being independent. <b>Georgia</b> for always having a positive attitude, being smiley and having a conscientious attitude to her work.
Ivy Bees	<b>Hugh</b> for displaying great skills, attention to detail and advice in hockey lessons. <b>Iris</b> for her engagement and effort in all lessons.
Sports Bee	<b>Arthur P</b> for some fantastic, focused work on the balance bikes.
Bee-haviour	<b>Ila</b> for showing super kindness to Mrs Jones and always being a superb role model.



# Plea for donations of: Table lamps, fairy lights, cushions and plants!

At Brighstone, we would like to develop our classrooms into calmer, more neutral 'therapeutic classrooms'.

*"Therapeutic classrooms are a new approach that redefines the traditional classroom set up. The average UK classroom is bright, cluttered, overwhelming and outdated, and is not designed around the needs of our children today.*

*Children deserve to feel comfortable, safe and inspired, especially when we know there has been a rise in the numbers of children struggling with their social, emotional and mental health. Teachers up and down the country are reporting increases in school refusal, dysregulated behaviours, disengagement and low social skills. Making changes to the classroom can help."*

## What is a therapeutic classroom?

*"Therapeutic classrooms are welcoming, safe, inviting environments that cultivate learning through their design. They calm stress hormones and increase feelings of emotional safety, whilst meeting the emotional and mental health needs of the children. Therapeutic classrooms include calm spaces and flexible seating in every room as standard, and allow children to work where they feel most comfortable.*

*They take into consideration space, lighting, comfortability, accessibility, inclusivity and connective learning. Therapeutic classrooms are inspiring places that children want to be in and are underpinned by science. "*

<https://www.tpctherapy.co.uk/therapeutic-classrooms/>

To start this process, we are looking to introduce **table lamps** and **fairy lights** (so we can turn off or reduce the use of the bright overhead lighting), **cushions** (to make comfy seating areas) and **plants**.

As budget is tight, we are wondering if you have, or know of anyone who has, any spare table lamps, cushions, fairy lights and plants that you no longer need. To minimise the use of bright colours, ideally these new furnishings need to be in neutral colours.

Please contact the school office if you have anything that you would like to donate.

**Thank you!**



## **IMPORTANT INFORMATION**

### **Road Closures and Bus Times**

We have been asked to share the following information with parents/carers.

**Brighstone Gate Lane, Brighstone**

**Closed from 0830 on Monday 3rd March to Friday 14th March**

**Route: 209**

**Monday AM: the bus will get through fine. From Monday PM bus will operate from the school right to Shorwell first and then through Kingston, Chale, Military Road to Hulverstone.**

**AMs - Bus will start at Shorwell as normal then when it picks up at Hulverstone it will turn and come back via Military Road to school.**

**No stops will be missed; it will just about 5 minutes later at the school AM. PM will be earlier at Shorwell and later at Hulverstone.**

As a school, we have made arrangements with Tony the bus driver to minimise the disruption in timings for parents/carers. We will cross the children across the road onto the doctors' pathway where there will be a temporary bus stop for them to embark onto the coach. Doing it this way means that the children who are dropped off in Shorwell will arrive 3-4 minutes earlier and the rest of the children should only be 1-2 minutes late.

If you have any questions, please do not hesitate to contact the school office.

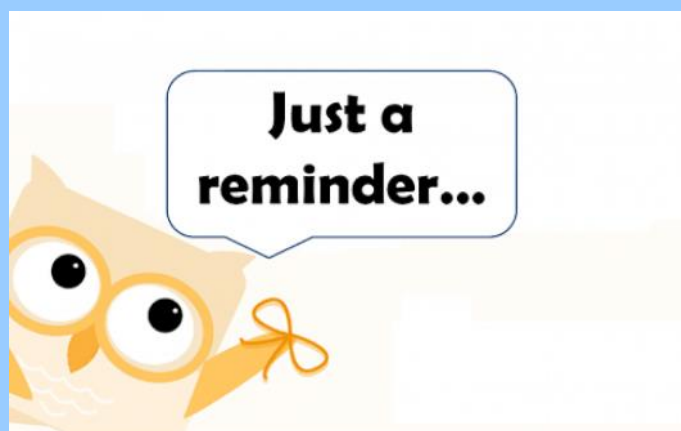
Thank you for your understanding.

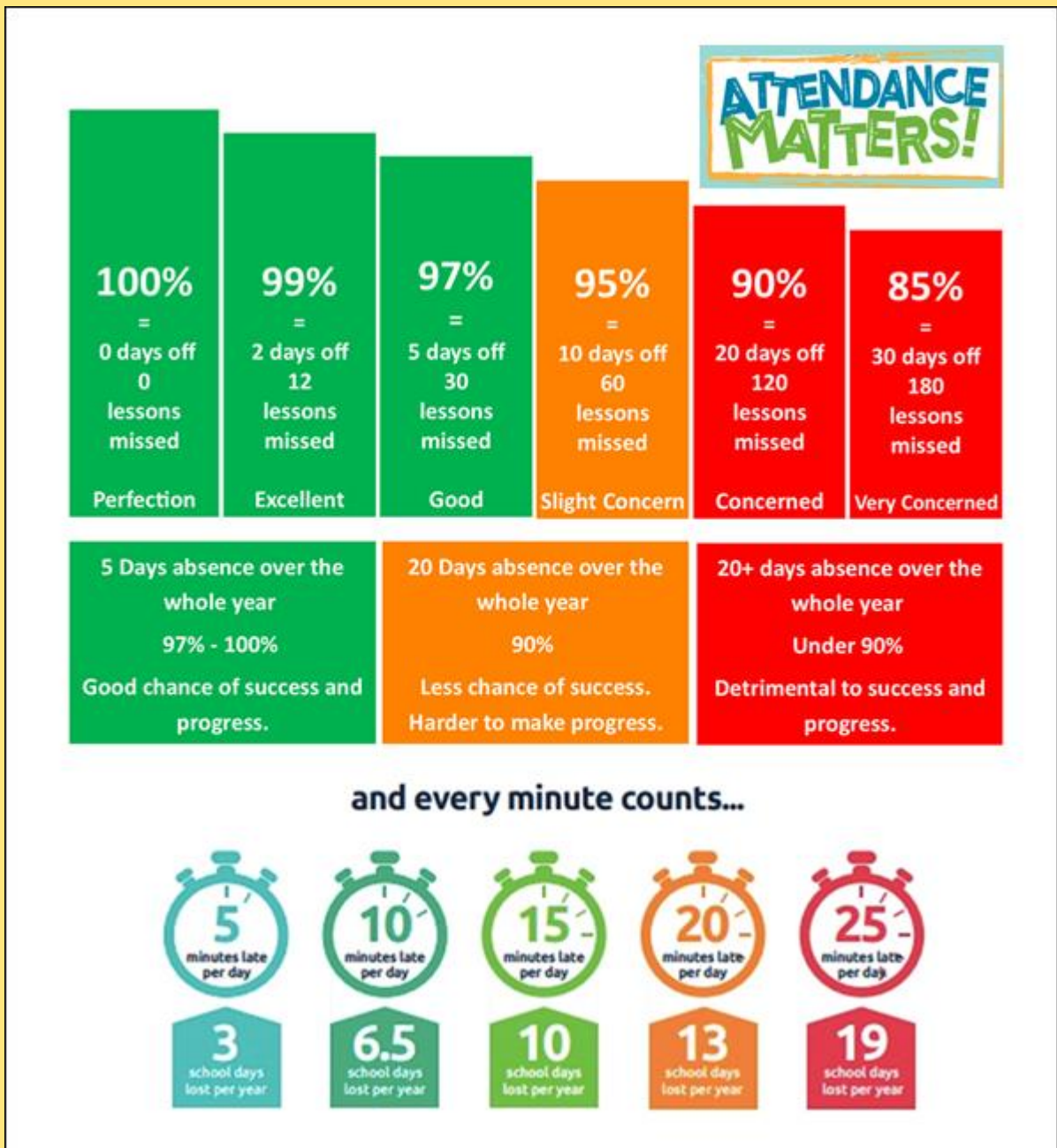


# Reminders

- PE Kit is navy blue top/jumper/hoodie with navy blue bottoms - **Branded items are not permitted**
- All hair accessories, socks, shoes and trainers must be in the school colours: navy blue, grey, black or white (no novelty socks)
- All long hair must be tied back (pony tail, bun, plaits etc...) to avoid the spreading of head lice
- No jewellery to be worn other than stud earrings, which must be removed or taped over on PE days
- Gates open at 8.25am and are locked at 8.30am, and in the afternoon, gates are opened at 2.55pm and locked at 3.10pm
- **As teachers are busy welcoming and supervising children first thing in the morning, please could all messages be given to Mrs Pelosi in the office, who will then pass them on to the teacher**
- Only **water** is allowed in drinks bottles, and snacks must be fruit only

Thank you!





At Brighstone Primary School we have high expectations for our children. This begins with attendance and punctuality as they are important life skills to learn.

Good school attendance habits are best started early. Children learn from those around them and you as parents/carers set the standards and expectations for your child. Lateness has a negative impact; being late may disrupt already settled children and lessons, affect achievement and embarrass, worry or upset your child. We understand that there may be an occasional unavoidable instance where you are late, but if it happens frequently, please let us know if there may be something that we can do to help.

What to do if your child is unwell:

Check the NHS Guidance: <https://www.nhs.uk/live-well/is-my-child-too-ill-for-school/>

You should notify the school office before 9am every morning your child is unable to attend due to illness. You can either telephone on 740285 or email on [office@brighstoneprimary.org.uk](mailto:office@brighstoneprimary.org.uk). Telephone calls must be followed up in writing to authorise the (illness) absence.



## SAVE THE DATE!

**Monday**  
**17** **BSA Meeting**  
**March**

Look out for more details

*Parents,  
Family members  
& friends of Brighstone  
Primary School*

**Does your place of  
work offer the Match  
Funding Scheme?**

Get in touch with us if your employers could  
help our BSA fundraisers via email at  
brighstoneschoolassoc@gmail.com

### BSA ASTRA RECYCLING BIN

#### We take...

- Clothes
- Shoes
- Bed Linen
- Accessories  
(Such as belts, hats & handbags)
- Soft Toys

#### We can't take...

- Duvets or Cushions
- Off Cuts
- Carpet or Curtains

Find our recycling bin at the front entrance of the school.



### Brighstone School Association

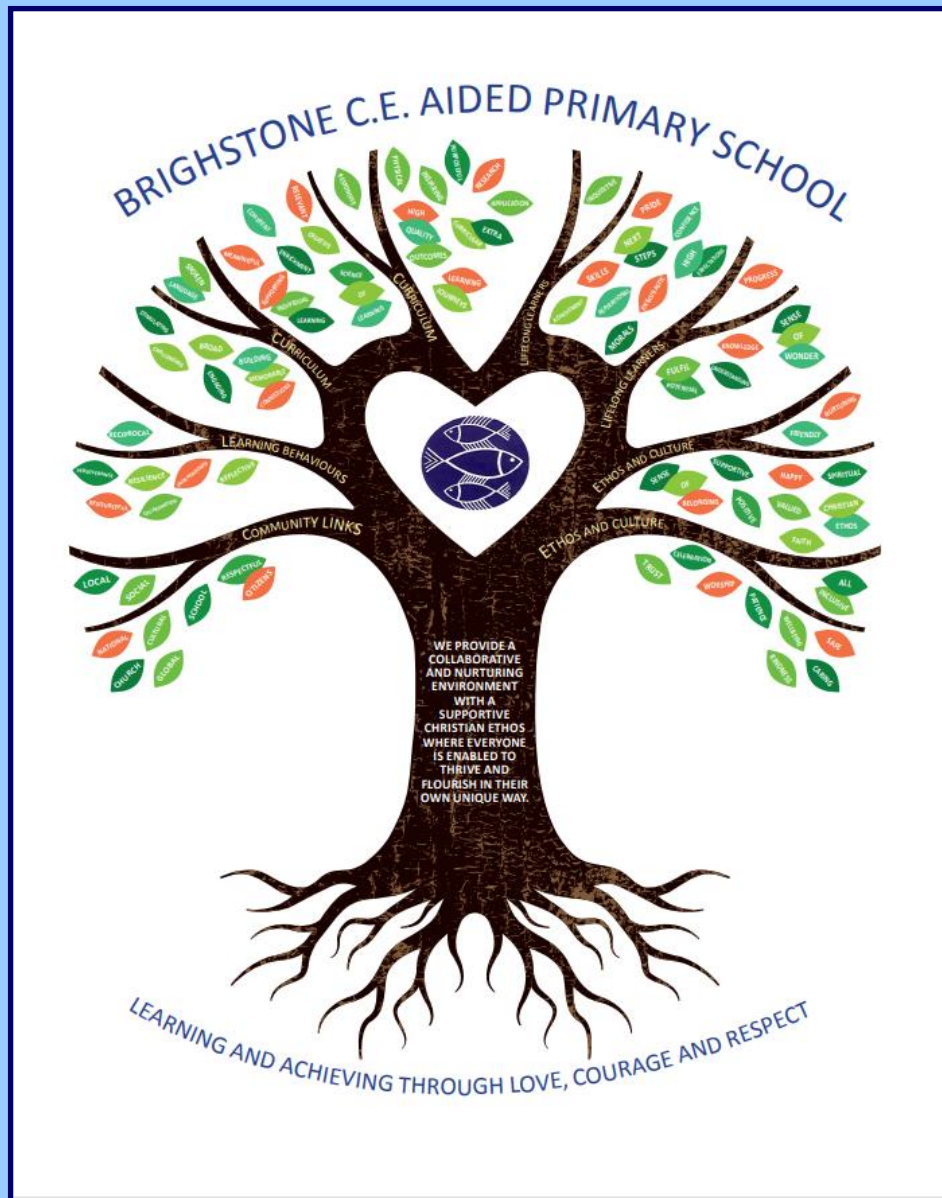


**Details on  
Social Media  
and in The  
Buzz next  
week!**

# Mother's Day Gifting



# Our Vision Statement



A vision statement 'seeks to inspire and give direction to all stakeholders (staff, children, parents, governors and the wider community). It is an aspirational description of what an organisation would like to achieve or accomplish in the mid-term or long-term future. It is intended to serve as a clear guide for choosing current and future courses of action'.

Our vision statement works alongside our mission statement 'Learning and Achieving Through Love, Courage and Respect', which includes our values, to reflect and guide our culture, ethos and decision making. This is also on our website.

As a school, in 2020 we worked together with a range of stakeholders to write our vision statement, and we decided to create a visual vision statement to make it stand out and be memorable. Each part of the image has been carefully chosen to represent our school:

Our values, as part of the mission statement (tagline), are the roots and foundation that feed and nourish our school.

The vision statement is the main body (trunk) that guides all our actions.

The branches reflect the different aspects of life in our school.

The leaves show examples of how these aspects are shown.

The school logo in the centre of the tree represents the Christian ethos that is at the heart of everything we do.



## Respect Charter

### at Brighstone CE Aided Primary School

At Brighstone CE Aided Primary School we believe staff, parents and children are entitled to a safe and protective environment in which to learn and work. We strive to ensure that our school offers a warm and nurturing environment. All members of the school community and visitors should demonstrate mutual respect, to feel safe, work together and to use restorative approaches as the foundation of our practice. Any behaviour that may lead to feelings of harassment, alarm or distress to members of our community, will not be tolerated and action taken.

#### Expectations

- That all adults set a good example to children at all times, showing them how to get along with all members of the school and the wider community.
- That no one - staff, governors, parents, carers, volunteers or children - be subjected to abusive behaviour or any form of threats from visitors on the school premises.
- That physical attacks and threatening behaviour, abusive or insulting language verbal or written (including on social media), to staff, governors, parents, carers, volunteers, children and other users of the school premises will not be tolerated and may lead to a ban from school premises and/or police action.

#### Types of behaviour that are considered serious and unacceptable

This is not an exhaustive list but seeks to provide illustrations of such behaviour:

- Shouting, either in person or over the telephone
- Speaking in an aggressive/threatening tone
- Physically intimidating, e.g. standing very close
- The use of aggressive hand gestures/exaggerated movements
- Physical threats
- Shaking or holding a fist towards another person
- Swearing and name calling
- Pushing
- Slapping, punching, hitting or kicking
- Racist, homophobic or other hateful behaviour
- Sexist comments or sexual innuendo
- Disrespecting religion or belief
- Inappropriate communications (posting on Social Networking sites, emails or letters, etc.) which could bring the school into disrepute or be deemed as bullying, harassment and/or a hate-related

The school reserves the right to take any necessary actions to ensure that members of the school community are not subjected to any form of abuse in line with policy and procedure. If you choose to engage in these behaviours you may be asked to leave the site or the police may be called.

**Thank you for your understanding and support**

If your message is **urgent** or about **attendance** contact Mrs Pelosi in the **office**:  
**01983 740285**  
office@brighstoneprimary.org.uk  
Office Hours 8am - 4pm

If you would like to speak with the **Headteacher** Mrs Lennon, you can find her at the school gate every morning or you can call 740285 to make an appointment with her



For **general enquiries** you can call or email the office, text the school messaging service or send a message to our school **Facebook** page: <https://www.facebook.com/BrighstoneCEPrimarySchool>  
*Our Facebook page is open so you do not need a personal account to view it*

If you have concerns about your child's **learning** and progress, email the class teacher in the first instance and allow at least 1 working day for a reply:

Years R, 1 & 2 - teacher.bumblebee@brighstoneprimary.org.uk  
Years 3 & 4 - teacher.honeybee@brighstoneprimary.org.uk  
Years 5 & 6 - teacher.ivybee@brighstoneprimary.org.uk

If you have concern regarding **safeguarding** or your **child's mental health and wellbeing** please contact Mrs Jones. You can speak to her on the playground every morning, call into the school office or email m.jones@brighstoneprimary.org.uk  
safeguarding@brighstoneprimary.org.uk

Our **Newsletter** is published every Friday with key information for parents and carers. You can find it on our school website: <https://www.brighstoneprimary.org.uk/category/the-buzz/>

## Contact us



If you have a safeguarding concern about a child outside of school hours you can call the police on 999 if you feel they are at risk of immediate harm or contact Children's Services on 0300 300 0117

Please be reminded that all children need to wear the correct PE kit on PE days.  
The correct PE kit is also needed for sports clubs.  
Socks and hair accessories must be in the school colours.

### School Day Timings

The school day is as follows:

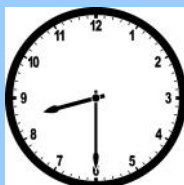
8.25am: Gates open

8.30am: School starts

3pm: School ends

3.10pm: Gates close

Many thanks.



## Key dates this year

- Tuesday 18th and Wednesday 19th March: Parents evenings
- Wednesday 26th - Friday 28th March: Y4 residential to Little Canada
- Friday 4th April: Last day of term
- Wednesday 16th April: National offer day for primary admissions
- Tuesday 22nd April: Back to school
- W/c Monday 12th May: Y6 SATs week
- Friday 23rd May: Last day of term
- Tuesday 3rd June: Back to school
- Friday 27th June: Sports Day
- Tuesday 15th July: Parents evening
- Wednesday 16th - Friday 18th July: Y6 London residential
- Friday 25th July: Last day of term

This list is regularly updated.

### School Term Dates for 2024-2025

Please note that the school will be closed on the following days in this academic year:

Day 1: Monday 2nd September 2024

Day 2: Tuesday 3rd September 2024

Day 3: Monday 2nd June 2025

Day 4: Monday 28th July 2025

Day 5: Tuesday 29th July 2025

Term dates are available on our school website.

