

Personal, Social and Emotional Development

We will be getting to know each other. We want to find out what the children's interests are, and what helps them to learn. The children will be learning about routines and rules at school, as well as developing their own social skills.



Communication and language



The development of the children's spoken language underpins all of our learning in Reception. We will be learning and using new vocabulary, learning to listen to each other and to have back and forth conversations. We will listen to stories, talk about experiences and sing songs.

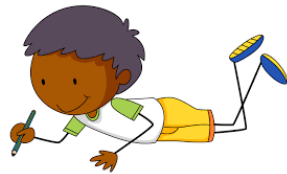
Physical Development

Children will have opportunities to develop both their fine and gross motor skills this half term, through playing with small, fiddly building materials and loose parts or dough, and by climbing, digging, lifting, carrying, balancing and running.



Literacy

Our day is filled with stories, songs and rhymes. We promote a love of reading, and there are books available in all areas. We also encourage children to tell us what they want to write, and we'll scribe it with them, modelling the process and inviting them to have a go too whenever they're ready to. Writing, drawing and mark making will be promoted and encouraged throughout the learning space.



Reception Bumblebee Class Learning Web



Autumn 1 2024

Maths

This half term, our Maths learning will focus on matching, sorting and patterns. Maths is all about patterns and we will encourage children to look and talk about what they see.



We will notice the maths that happens in all of our daily routines at school, using real natural objects and recognising things that are the same or different, creating groups, sorting and matching. We will use

mathematical language to talk about what we see.

Understanding the World

We will encourage children to explore and observe their natural environment, pointing out the weather, the leaves falling off the trees and other things which will change over time. We'll invite children to talk about their own experiences and the people they've met, beginning to broaden their view of the world. We will also introduce new words and interesting objects.



Expressive Arts and Design



In Reception, we encourage children to be independent at the Creative Area. Initially we will focus on putting on aprons, gathering resources, and putting their work on the drying rack. We will invite children to have a go, to paint, collage, build, sing and play music, in a safe creative environment, indoors and out.

R.E.

This half term, we will introduce the Christian concept of God, inviting children to talk about what they may already know, and to think about how the world was made. We will look at the Christian Creation Story in the Bible.

