

The Buzz



Brighstone C.E.
Primary School

10th November 2023



Learning and Achieving Through Love,
Courage and Respect

Dear parents, carers and children,



What an amazing day we have had today! We were privileged to welcome the **Pearl of Africa choir** to our school. The children had a whole school assembly, followed by singing, dancing and drumming workshops for each class. Feedback from the children so far includes: "I am speechless, they are so good", "It gave me goosebumps", "You should be famous", "You should be on the radio" and "That's the best thing I've ever seen". They spread joy and positivity, and you can't help but feel uplifted when you watch them perform with so much energy and enthusiasm. Our children thoroughly enjoyed themselves, and were even showing their newly learnt dances on the playground at lunchtime!

The choir (nine children, age range 10 to 18 years, led by three adults) is drawn from the schools of the Molly and Paul Childcare Foundation (registered NGO/charity in Uganda). The Foundation was established over 30 years ago by Molly and Paul Wasswa and today provides education, food, and basic healthcare to about 1,200 children, many of whom are orphaned or destitute and would not be either educated or regularly fed if they did not attend one of the Molly and Paul schools. We will post photos and videos of the workshops on Facebook on Monday, including photos from this evening's performance in St Mary's Church, to which many of you are coming.



After school, we were also treated to a performance on the playground, where the choir wowed parents, children and staff. We look forward to seeing you at the performance this evening at 6.30pm in the church, where our pupils will also get the opportunity to perform some of the songs and dances that they learnt today with the choir, in the second half of the show. It is free admission with a retiring collection to support the Foundation's education and feeding programmes in Uganda. There are also Ugandan crafts available to purchase, many of them handmade by the choir themselves. We thoroughly enjoyed spending time with our visitors today, and we wish them all the very best for the remainder of their UK tour before they head back to Uganda. We hope to see you again next year!

The choir will also be taking part in the **Remembrance Service** on Sunday morning, where we also hope to see you if you can make it.

Next Tuesday, we will be holding our **Inter Faith Day**, as part of Inter Faith Week, on which we will be welcoming visitors to talk about their different faiths around the theme of Community. We look forward to sharing photos and information about this day in next week's Buzz.

Inter Faith
Week



Yesterday, I enjoyed teaching a PSHE lesson in **Ivy Bee class**. The focus was about what 'normal' means, and about challenging prejudices and discrimination. It was a pleasure to hear their very balanced views, and hearing how much topical knowledge they have. A lot of the discussions that were taking place were about the nine protected characteristics in the Equality Act 2010, which we are also focusing on with the EARA group. As one member of the class said "As a member of the EARA group, I am shocked and astonished that some people [in the world] have these [prejudiced] views".

On this topic, I took six representatives of our **EARA group** to another IOW EARA group meeting at Shalfleet Primary School. They worked with EARA groups from other schools, and found out more information about the United Nations Convention on the Rights of the Child, as well as the Equality Act 2010. They will feed back to the rest of the EARA group next week, before creating their action plan for the year ahead.

With very best wishes, Mrs Lennon and the Brighstone team

Collective Worship - Remembrance

This week, we have been thinking about Remembrance.

We heard and discussed lots of facts about Remembrance. Can you answer these questions?

Why are poppies used to commemorate Remembrance Day?



Why do we commemorate Remembrance Day?

On what day and at what time do we have a 2 minute silence and why?

God,
Our refuge and strength,
Bring near the day when wars shall cease and poverty and pain shall end,
That the earth may know the peace of heaven Through Jesus Christ our lord.
Amen.



School Dinners

Children in **Year R, 1 and 2** are entitled to a 'universal' free school meal everyday.

Children in Years 3-6 are charged at **£2.90** per day.

Baguettes are now **NOT** available

Week 3	Monday	Tuesday	Wednesday	Thursday	Friday
Option 1	Pizza	Sausage and mash	Roast pork	Chicken korma	Fish fingers
Option 2	Tomato pasta	Cauliflower cheese	Veggie roast	Tomato pasta	Quorn nuggets
Dessert	Apple bake	Jelly	Shortbread	Fruit cake	Shortbread

Poetry Corner

They shall grow not old



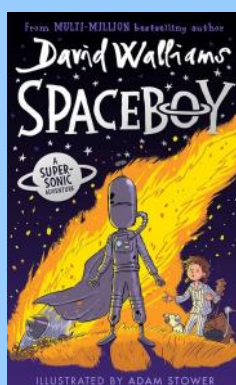
Laurence Binyon, 1869 - 1943



Reading Recommendations

Each week we will include a book recommendation from a child and/or adult.

This week, Max C recommends:



It's about a boy who went up into space when he was younger, and then he crash landed into a farm. A girl named Ruth was very fascinated about space and she saw him crash land in her farm.

I would recommend this book because it's funny and exciting.

Safeguarding

If you have a concern about a child you can call the police on 999 if you feel they are at risk of immediate harm

You can contact the NSPCC:

Contact the NSPCC Helpline

If you have any concerns at all about a child's safety or wellbeing, don't hesitate to contact us.

Call us or email help@nspcc.org.uk

0808 800 5000

[Find out more](#)

Or call children's services 0300 300 0117

Attendance Matters!

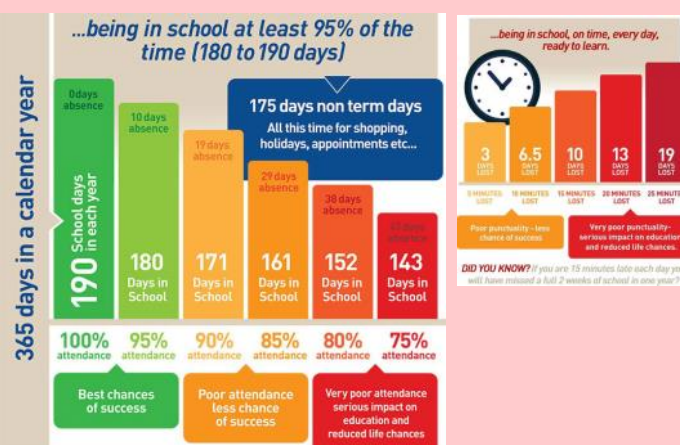
Week Commencing 6th November

Whole School attendance target:

96.5%

Actual Attendance: **93.95%**

Late marks this week: 7



SEMH

Social, Emotional & Mental Health

Autumn

SELF-CARE IDEAS
FOR MENTAL HEALTH



Take a
cozy nap



Drink hot
chocolate or
apple cider



Light up
a scented
candle



Start a
new hobby



Take a
nature walk



Enjoy
warm socks



Baking



Journal

@THERAPY.WITH.MONIQUE
@GATHERANDGROWOC

Online Safety



What parents need to know about AGE RATINGS



If you have children, it is understandable to have concerns about the films and TV shows they watch, as well as the games they play. In this guide, we take a look at the two official ways you can assess if a particular title is suitable for your child. Both the BBFC and PEGI have search facilities on their websites that can be used to look up individual titles so you can check their ratings.



RATINGS FOR FILMS, TV & MUSIC VIDEOS

Since 1912, the BBFC (British Board of Film Classification) has informed UK residents of the age suitability of films, TV and music videos - providing parents with the information needed to assess whether or not it is appropriate for their child's age. This applies to cinema releases, DVDs and streaming video services such as Netflix.

WHAT ARE THE BBFC RATINGS?

BBFC ratings are broken down into seven age categories:

Universal, suitable for all ages	Parental Guidance required	Suitable for people aged 12 and over	Suitable for people aged 12 and over; anyone younger must be accompanied by an adult
Suitable for people aged 15 and over	Suitable for people aged 18 and over	Adult content only available in specially licenced cinemas and specialist retailers	

WHAT ELSE CAN BBFC REVEAL?

Accompanied with the age suitability rating, BBFC also provide an additional warning regarding the content and what to expect, such as swearing, sexual content, violence and anything you may consider to be inappropriate for your child. In addition to this, the content is also rated in three levels: frequent, mild or strong.

LIMITATIONS OF BBFC RATINGS

It's important to note that there is no obligation on streaming video services to use or display BBFC ratings. Due to this, we advise that you check the rating online before your child streams the content. It may also be a good idea to watch the content first yourself or discuss it with other parents to help you decide whether or not it is suitable for your child.

Source: www.bbfc.co.uk

RATINGS FOR GAMES

PEGI (Pan European Game Information) is a content rating system that ensures all video games are labelled with a minimum age recommendation. These age recommendations are based on the types of content featured within a game. With each game, PEGI also provide a content descriptor that indicates the potential issues and concerns, including sex, violence, bad language and drugs.

WHAT ARE THE PEGI RATINGS?

PEGI ratings are split into age restriction and content descriptors. Additional 'content descriptors' help parents and children to understand the type of content featured within a particular game, including sex, fear, bad language, discrimination, gambling, drugs, violence, and in-game purchases. In combination, the two different ratings can provide a good level of information to help make informed decisions regarding the suitability for your child.

PEGI age ratings are broken down into five categories:

www.pegi.info	www.pegi.info	www.pegi.info	www.pegi.info	www.pegi.info

PEGI content descriptors are broken down into eight categories:



LIMITATIONS OF PEGI RATINGS

It's possible for young people to buy games online without a required proof of age, opening them up to age-inappropriate content without you knowing. We advise that you regularly monitor your child's gaming activities and maintain a honest and healthy dialogue with them about the online world.

PARENTAL CONTROLS

It is a good idea to put in place parental controls for all online accounts which your child may use to purchase or download online games e.g. The App Store, Google Play Store, PlayStation Store and Microsoft Xbox Store etc.

Source: www.pegi.info



National Online Safety

A whole school community approach to online safety
www.nationalonlinesafety.com

Email us at hello@nationalonlinesafety.com or call us on 0800 368 8061





The sale rail is still
available in the foyer

The main announcement is enclosed in a white rectangular box with a decorative border of blue and white diagonal stripes. At the top of the box, a string of colorful bunting flags (red, green, yellow, blue, orange) is strung across. The text is centered and reads:

Brighstone School Association
**Preloved
Uniform Sale**
Next Sale from
25th September 2023

**The sale rail will be up by the
school office.
Money will be collected in the
donation box.**

 **Unwanted uniform donations welcome.
Please place in box in office foyer the
week before each sale.**

Made with PosterMyWall.com

If your message is **urgent** or about **attendance** contact Mrs Pelosi in the **office**:
01983 740285
office@brighstoneprimary.org.uk
Office Hours 8am - 4pm

If you would like to speak with the **Headteacher** Mrs Lennon, you can find her at the school gate every morning or you can call 740285 to make an appointment with her



For **general enquiries** you can call or email the office, text the school messaging service or send a message to our school **Facebook** page: <https://www.facebook.com/BrighstoneCEPrimarySchool>
Our Facebook page is open so you do not need a personal account to view it

If you have concerns about your child's **learning** and progress, email the class teacher in the first instance and allow at least 1 working day for a reply:

Years R, 1 & 2 - teacher.bumblebee@brighstoneprimary.org.uk
Years 3 & 4 - teacher.honeybee@brighstoneprimary.org.uk
Years 5 & 6 - teacher.ivybee@brighstoneprimary.org.uk

If you have concern regarding **safeguarding** or your **child's mental health and wellbeing** please contact Mrs Jones. You can speak to her on the playground every morning, call into the school office or email m.jones@brighstoneprimary.org.uk
safeguarding@brighstoneprimary.org.uk

Our **Newsletter** is published every Friday with key information for parents and carers. You can find it on our school website: <https://www.brighstoneprimary.org.uk/category/the-buzz/>

Contact us



If you have a **safeguarding** concern about a child outside of school hours you can call the police on 999 if you feel they are at risk of immediate harm or contact Children's Services on 0300 300 0117

School Day Timings

From September 2023, the school day is as follows:

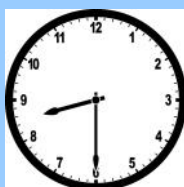
8.25am: Gates open

8.30am: School starts

3pm: School ends

3.10pm: Gates close

Many thanks.



Key dates this year

2023-2024 academic year

- Tuesday 14th November: Inter Faith Day
- Tuesday 21st November: Parents Evening 3.15pm - 6pm
- Wednesday 22nd November: Parents Evening 3.15pm - 5pm
- Thursday 7th December: Pantomime in Portsmouth - information to follow soon
- Tuesday 12th December: Nativity (afternoon)
- Wednesday 13th December: Nativity (evening)
- Thursday 14th December: Christingle service (2pm)
- Tuesday 19th December: Last day of term
- Wednesday 20th December - Monday 1st January: Christmas holidays
- Tuesday 2nd January: Back to school
- Friday 9th February: Last day of term
- Monday 12th - Friday 16th February: Half term
- Monday 19th February: Back to school
- Tuesday 5th March: Parents Evening 3.15pm - 6pm
- Wednesday 6th March: Parents Evening 3.15pm - 5pm
- Thursday 7th March: World Book Day
- Thursday 28th March: Last day of term
- Friday 29th March - Friday 12th April: Easter holidays
- Monday 15th April: Back to school
- W/C 13th May: Y6 SATs
- Friday 24th May: Last day of term
- Monday 27th - Friday 31st May: Half term
- Monday 3rd June: School closed for staff development day
- Tuesday 4th June: Back to school
- Friday 12th July: Reports go home
- Tuesday 16th July: Parents Evening 3.15pm - 6pm
- Thursday 25th July: Last day of term
- Friday 26th July: School closed for staff development day

Term dates are also available on our school website.

