

The Buzz



9th June 2023



Learning and Achieving Through Love,
Courage and Respect

Dear parents, carers and children,

It was lovely to see everyone after the half term holiday. On Monday, the whole school took part in another **Hive Day**, in which they worked with children from different year groups and learnt how to be 'bucket fillers'. Showing acts of kindness, or saying kind things, fills the other person's bucket as well as your own. I have personally experienced the legacy of that day throughout the week: as I have been walking through the school, or sitting at my desk, children have enquired after my day: "How has your day been, Mrs Lennon?", "Are you having a good morning, Mrs Lennon?", and "Hope you have a lovely day!". They hold doors open, they share their belongings (thank you to those who offered me some sweets after school today, yum yum), and they help each other and members of staff. How polite and well-mannered they are!



On the subject of kindness, it was lovely to see so many help out at our third community **Spruce up our School for Summer** day on the first Saturday of the half term holiday. Children and their parents helped to weed, tidy, paint, sweep, cut, trim and more, and lots of jobs were crossed off the list. A huge thank you to you all for being so generous with your time. See later in this Buzz, as well as our Facebook page, for more information and photos.

This week, we held another **EARA group** meeting, during which we talked about our actions so far this year and what further actions they would like to carry out. Some of the older children said that, as it is Pride month, they would like to prepare and lead an assembly on this. They set to work during their lunchtimes, and are leading this on Monday morning. Some of the EARA group have noticed that some children in school have been putting themselves and their ability down, so they would like to prepare and lead an assembly about resilience and self-belief. Well done to the EARA group for showing such inclusivity and kindness.



Sharing a story is a lovely thing to do with your child, no matter whether they are in Reception or Y6. It's an opportunity for some quality time reading and talking about the book or poem, exploring the story, characters and vocabulary, looking at the pictures, and asking questions. We held our first **Share a Story** session with Ivy Bee class this afternoon, and will be holding further **Share a Story sessions** over the next few weeks (see the dates on p11 of this Buzz). We look forward to seeing you there!

I wish you all a lovely weekend, and I look forward to seeing you on Monday.

Best wishes,

Mrs Lennon and the Brighstone team

Collective Worship - Respect

This week's Collective Worship theme is **Trinity—God's Never Ending Love**

Last Sunday was Trinity Sunday, which is celebrated on the Sunday after Pentecost. The season of Trinity lasts until the start of Advent, and the liturgical colour for Trinity is green because it is the season of growth.

We discussed what 'trinity' means, and thought of lots of other words that start with 'tri', including triplets, triangle, triathlon, and tricycle. We thought of the Power of Three in stories and in other places, including our three school values, The Three Billy Goats Gruff, The Three Little Pigs, The Three Little Wolves and the Big Bad Pig, Goldilocks and the Three Bears, and Harry, Ron and Hermione! Can you think of any others?



We talked about how God is described in the Bible as three things (God the Father, God the Son and God the Holy Spirit) while also as one God. (We noticed that our school prayer has the Holy Trinity in it.) To help us understand this, we talked about how we can also be three things (for example, a daughter, a sister and a pupil). We also talked about how many Celtic symbols show God's never ending love.



Our School Prayer

We thank you, **God**, for your unfailing and never ending love for us.

Lord Jesus, please give us the courage to be lights in the world.

Holy Spirit, please help us to have the respect to show God's love to others and the world around us.

Amen

Can you spot the Holy Trinity in our prayer?



"O Lord, our Lord, Your greatness is seen
in all the world!"
Psalm 8.9



School Dinners

Children in **Year R, 1 and 2** are entitled to a 'universal' free school meal everyday.

Children in Years 3-6 are charged at **£2.55** per day.

Baguettes now available on Tuesdays and Thursdays instead of JPs (ham, cheese or tuna)

Week 2	Monday	Tuesday	Wednesday	Thursday	Friday
Option 1	Macaroni Cheese	Chinese chicken & Rice	Roast Gammon	Beef lasagne	Fish Fingers
Option 2	Tomato Pasta	Tomato Pasta	Tomato Pasta	Tomato Pasta	Veggie dippers
Dessert	Ice cream	Jelly	Shortbread	Flapjack	Oat cookie

Poetry Corner

Worm Words

"Keep still!"
said Big Worm
to Little Worm.
"You're driving me
round the bend."

"Don't be daft,"
said Little Worm.
"I'm your other end."

Tony Mitton



Grammar and Spelling Matters

Each week we will include a mini grammar or spelling lesson so you know what your children are learning!

Punctuation: apostrophe for possession

ENGLISH GRAMMAR **APOSTROPHE S** **POSSESSIVE NOUNS** *Woodward ENGLISH*

Singular Nouns Add: 's (apostrophe S) - We went to Ange's house last night. - Where is the dog's bone? - Is that your friend's bike?	Plural Nouns ending in S Only add the apostrophe (no S) - You need your parents' permission. - Where are the dogs' bones? - My friends' house is big.
Singular Nouns ending in S Add: 's (apostrophe S) - The class's teacher is nice. - My boss's office is big. - The princess's dress is pink.	Plural Nouns NOT ending in S Add: 's (apostrophe S) - He always corrects people's grammar. - The men's toilet is disgusting. - The children's camping trip.
Names ending in S Add: 's ... OR... only an apostrophe - James's dog is hungry. Both forms are correct. - James' dog is hungry.	Classical/Religious Names ending in S Only add the apostrophe (no S) - Sophocles' plays are still performed today. - Hercules' strength seemed unlimited.
Two or more people Add: 's ... OR... only an apostrophe - Stacy and Steve's car is old. - Stacy's and Steve's cars are old.	No Noun after Apostrophe S To avoid repetition when the meaning is clear. A: Whose umbrella is this? B: It is Mary's. = It is Mary's umbrella.

www.grammar.cl www.woodwardenglish.com www.vocabulary.cl

Safeguarding

If you have a concern about a child you can call the police on 999 if you feel they are at risk of immediate harm

Contact us: safeguarding@brighstoneprimary.org.uk

Speak with our DSL Mrs Jones in the school office

You can contact the NSPCC:

Contact the NSPCC Helpline

If you have any concerns at all about a child's safety or wellbeing, don't hesitate to contact us.

Call us or email help@nspcc.org.uk

0808 800 5000

[Find out more](#)

Or call children's services 0300 300 0117

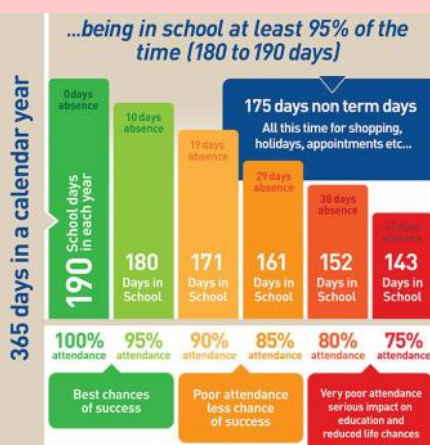
Attendance Matters!

Week Commencing 5th June

Whole School attendance target: **96.5%**

Actual Attendance: **97.99%**

Late marks this week: 7



Golden Book

Bumble Bee	<p>Max F - great participation in the Hive Day and continuing to think about kindness all week.</p> <p>Luna for always trying hard in everything she does but particularly working independently in our maths work on position and direction.</p> <p>Samuel for being a super learning partner in English this week and encouraging others.</p> <p>Annie for talking to an adult when something had happened and sorting out the situation.</p>
Honey Bee	<p>Charlotte R - for consistently improving her handwriting and working really hard in English.</p>
Ivy Bee	<p>Mia - for really thinking about the challenges and calculations needed when tackling maths challenges.</p>
Bee-Haviour and Sports Bee	<p>Max F (R) - for demonstrating the Hive Day learning so beautifully and showing great passion in PE.</p>



Love

Courage

Respect

SEMH

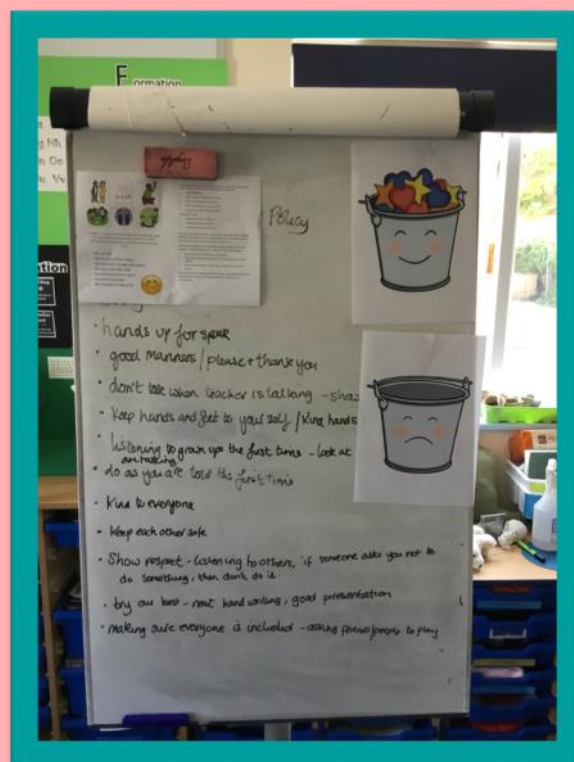
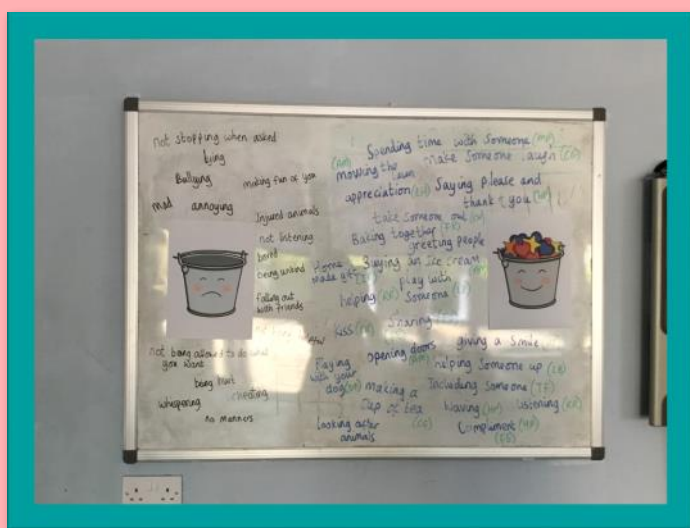
Social, Emotional & Mental Health

On Monday we had a Hive Day.

In the morning the children learned about how to be "bucket fillers" with activities linked to the Carol McCloud story - Have you filled a bucket today? In the afternoon, children took part in sports activities such as 'backwards basket-ball' to test their resilience, sportsmanship and teamwork.

Throughout the day, there were lots of opportunities for the children to work collaboratively and for the older children to show their leadership skills - which they did beautifully.

It is always wonderful to see the children work together in their "hives" as they have the rare opportunity to work with children from all years R-6. The older ones really do look after the little ones.



Hive Day



Online Safety

Inappropriate or explicit content

Get advice on supporting children if they've seen harmful or upsetting content online.



Types of inappropriate or explicit content

As children start to explore the internet, they may come across content that isn't suitable for their age, or that may upset or worry them. We've got lots of advice to help you and your child if they have seen explicit or harmful content. Take a look at our [resources for supporting children](#) and understanding how they might feel if they see upsetting content.

We also have pages about how to identify and deal with different types of inappropriate and explicit content.

NSPCC: <https://www.nspcc.org.uk/keeping-children-safe/online-safety/inappropriate-explicit-content/>

PRESENTING...



SCIENCE DAY 2023



Friday 14th July



PARENTS WE NEED YOU!



PLEASE COME AND SHARE YOUR SCIENCE CAREER WITH OUR CHILDREN, BY PRESENTING A SHORT EXPLANATION OF WHAT YOU DO AND HOW SCIENCE ENABLES THIS. PROPS ARE WELCOME. IT'S A GREAT OPPORTUNITY FOR THE CHILDREN TO ASK QUESTIONS ABOUT WHAT YOU DO AND LEARN MORE ABOUT FUTURE CAREERS. WE WOULD LOVE TO HEAR FROM VETS, DOCTORS, NURSES, ELECTRICIANS, GARDENERS, ENGINEERS AND ANY AND ALL OTHERS, WHOSE CAREER IS SCIENCE BASED. PLEASE EMAIL MRS DENNESS: LDENNESS@BRIGHSTONEPRIMARY.ORG.UK



School News

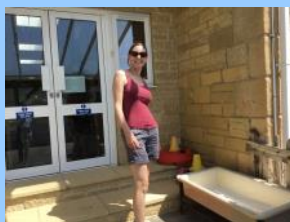
Community Spruce Up Our School for Summer day

We had a hugely successful day last Saturday for our 'Spruce up our School for Summer' community day. Lots and lots of jobs were completed, including:

Washing doors, windows and window frames, weeding beds and paths, sweeping the playground, cutting and strimming grass, trimming hedges, clearing invasive climbing plants from walls, clearing and tidying the school 'secret' garden, clearing and tidying the Reception and Y1/2 outside areas of weeds and leaves, sanding and painting the Reception class balustrades and handrails, sanding and painting the frame around the playground mosaic mural, clearing nettles from the school field, and crecoting the preschool and BSA shed.

Phew! A huge thank you to everyone who very generously contributed their time and materials. Thank you to: Emily (thank you for helping to organise it), Mike and Quinn, Heather, Martha, Annie and Rufus, Mark and Ila, Jo, Richard, Henry and Helena, Rose and Giles, Keith, Carolyn, Robin, Tristan and Molly, Rosanna and Emma, and Mrs Lennon and Simon.

We couldn't have done it without you!



If your message is **urgent** or about **attendance** contact Mrs Pelosi in the **office**:
01983 740285
office@brighstoneprimary.org.uk
Office Hours 8am - 4pm

If you would like to speak with the **Headteacher** Mrs Lennon, you can find her at the school gate every morning or you can call 740285 to make an appointment with her



For **general enquiries** you can call or email the office, text the school messaging service or send a message to our school **Facebook** page: <https://www.facebook.com/BrighstoneCEPrimarySchool>
Our Facebook page is open so you do not need a personal account to view it

If you have concerns about your child's **learning** and progress, email the class teacher in the first instance and allow at least 1 working day for a reply:

Years R, 1 & 2 - teacher.bumblebee@brighstoneprimary.org.uk
Years 3 & 4 - teacher.honeybee@brighstoneprimary.org.uk
Years 5 & 6 - teacher.ivybee@brighstoneprimary.org.uk

If you have concern regarding **safeguarding** or your **child's mental health and wellbeing** please contact Mrs Jones. You can speak to her on the playground every morning, call into the school office or email m.jones@brighstoneprimary.org.uk
safeguarding@brighstoneprimary.org.uk

Our **Newsletter** is published every Friday with key information for parents and carers. You can find it on our school website: <https://www.brighstoneprimary.org.uk/category/the-buzz/>

Contact us



If you have a **safeguarding** concern about a child outside of school hours you can call the police on 999 if you feel they are at risk of immediate harm or contact Children's Services on 0300 300 0117

Gates

The gates are closed at 3pm every day, rather than at the end of clubs. Please collect your children from after-school clubs from the hall door, except for the bell ringers (St Mary's Church) and cricket club (Warnes Lane).

Many thanks.

Key dates this year

- Friday 16th June: Mufti day in return for cakes for Northcourt Manor Open Gardens
- Friday 16th June: Honey Bee story time session with parents (2.25pm)
- Monday 19th—Wednesday 21st June: Y4 Kingswood residential
- Friday 23rd June: Sports Day (details to follow nearer the time)
- Tuesday 27th June: Tony Peek Poetry Workshops
- Thursday 29th June: Y6 Leavers' Service at Portsmouth Cathedral (letter to follow nearer the time)
- Friday 30th June: Bumble Bee story time session with parents (2.25pm)
- Tuesday 4th and Wednesday 5th July: High school transition days
- Tuesday 4th July: Whole school transition morning
- Friday 7th July: Reports go home
- Tuesday 11th July: Forest Day
- Tuesday 11th July: Parents Evening
- Friday 14th July: Science Day
- Monday 17th—Tuesday 18th July: Y6 Corfe residential (details to follow)
- Thursday 20th July: School closed for staff development day
- Friday 21st July: School closed for staff development day



Brighstone School Association

FATHERS DAY SHOP



£3 per gift

The children are being given the opportunity to purchase a special gift for a special loved one for Fathers Day

If you would like your child to purchase a gift, please see the email sent home and return form/money in a named envelope or order through our Pta events page by Friday 9th June.

pta-events.co.uk/brighstoneschoolassociation

Your child will visit our shop on Thursday 15th June to collect their gift

Made with PosterMyWall.com

Brighstone School Association

YOUR HELP IS NEEDED

Sunday 18th June

We have the opportunity to run the Tea/cake stall at the garden opening @ Northcourt. This is a great fundraiser for us, and we have raised over 1K before. However, we know the date clashes with the festival.

If you can help us run the teas on this date can you let the BSA know.



Brighstone School Association

Traditional homemade cakes sell really well at the Open Gardens

Mufti Day

Friday 16th June



Wear Non Uniform in return for bringing in a cake to be sold at Northcourt Open Gardens on Sun 18th June



Cake ideas for you that have sold well at previous Open Gardens:

- ★ Coffee and Walnut
- ★ Carrot
- ★ Victoria Sponge
- ★ Ginger
- ★ Flapjack
- ★ Fruit
- ★ Lemon Drizzle
- ★ Chocolate

THANK YOU FOR YOUR SUPPORT



Brighstone School Association

PLANT sale

Located by the school office

We are looking for donations

- Vegetables
- Herbs
- Annuals
- Perennials

If you have any surplus plants after sowing your seeds this year, please think about donating them to us to raise money for the BSA.

Made with PosterMyWall.com

Have you seen Tax-Free Childcare (TFC) - What is it?

Government support for **working parents**, including the self-employed, in the UK working at least 16 hours at the National Minimum Wage.

For children aged 0-11 or until 16 if disabled.
(Preschool/ Breakfast/Afterschool/Holiday Club)

Childcare
Choices

- Parents and carers can earn up to £100k each per year and still be eligible for TFC.
- For every £8 a parent pays into an online account, the government will add an extra £2.
Up to £2,000 per child per year or £4,000 each year if the child has a disability.
- This is for parents who **aren't** receiving Tax Credits, Universal Credit, or childcare vouchers.



Setting up an account and payments

- Parents apply for an account through: childcarechoices.gov.uk.
 - HMRC confirm via email, and you can set up their TFC account.
 - Accounts can be opened at any time of the year and can be used straight away.
 - Parents search for provider in the 'Your Tax-Free Childcare account' section of the account homepage by name, address, postcode. (**Niton Preschool, School Lane, Niton PO38 2BP**)
 - Parents pay money into the TFC account. The top up will be added automatically.
 - The government top-up is applied to deposits made for each child, not household.
- Parents can get up to £500 every 3 months (up to £2,000 a year) for each child to help with the costs of childcare.
- Parents pay the childcare provider directly through the childcare account using bank transfer.
- **For every £8 a parent pays into this account, the government will pay in £2 to use to pay the provider.**
- Parents can use Tax Free Child to pay for additional childcare costs:
Our preschool consumable charges: You pay £16.00 Government pays £4.00.

Home to School Transport – Academic Year 23/24

This applies if your child is part of the phased transfer group (year 7 or Reception from September 23).

To best ensure your child has transport in place from September 23 you will need to apply for home to school transport to your child's new school by 25/06/2023.

If your child has an EHCP, you'll need to apply by 15/07/2023.

If your child is already in receipt of transport, you will not need to reapply unless your child has moved address or school.

If you submitted a form after the above deadlines, kindly be aware transport may not be in place for the start of the year and you might be expected to make your own arrangements until such time as transport is arranged by the Team.

Apply for home to school transport (iow.gov.uk) on the Isle of Wight council's website using the online forms which can be found under school transport. You will need to be logged into to your account for the form to load up for you to complete.

<https://www.iow.gov.uk/schools-and-education/home-to-school-transport/apply-for-home-to-school-transport/>

Once you have applied this will be processed by School Admissions and they will contact you if eligible for Local Authority Funded Home to School Transport.

Kind Regards
Transport Team
Tel (01983) 823780
Email transport.info@iow.gov.uk

John Constable's The Cornfield

John Constable's *The Cornfield* is on display, free, at 64 High Street, Newport, from 9-5, up to and including Sunday 11th June. 64 High Street is the old Edinburgh Woollen Mill, now the offices of the Newport and Carisbrooke Community Council.

More information, an audio description and 5 minute meditation can be found on

<https://www.nationalgallery.org.uk/exhibitions/across-the-uk/constable-visits>

Also, from 10-1 every day from now until Saturday, at the Museum of Island History in the Guildhall, we have an exhibition of rural life photos by James Dore, from the late Victorian / Edwardian period, together with some artefacts. Entry is free thanks to funding from the National Gallery. There will be family friendly activities available on Saturday 10th June.



NEW DISPLAY OF PHOTOS BY JAMES DORE

FREE ENTRY
TUESDAY 6 JUNE...
...TO SATURDAY 10 JUNE

RURAL LIFE

***DISPLAY RUNS UNTIL OCTOBER 2023**



FREE ENTRY
10am to 1pm
Tuesday 6 June to
Saturday 10 June*

MUSEUM OF ISLAND HISTORY
Guildhall, High Street,
Newport, IW, PO30 1TY
museums@iow.gov.uk
01983 823433

ALL-WEATHER INTERACTION

NEWPORT ROMAN VILLA
iow.gov.uk/romantown

ISLE of WIGHT

Event organised by IW Heritage Service



bikeability

Summer holiday sessions

Road safety cycle training for ages 8 to 12

Level 1 – 7 August
£10 per person. Two-hour course in a playground environment. Morning and afternoon sessions available.

Level 2* – 8 and 9 August
£15 per person. Four-hour course on local roads. Morning and afternoon sessions available.

Combined level 1 and 2 – 7, 8 and 9 August
£20 per person. Riders to attend all three days.

Family sessions
£15 per family. Three-hour session, morning and afternoon sessions available. contact us for more information.

*Rider assessment required prior to level 2.

Book by 5pm Monday 17 July
Contact: sports.unit@iow.gov.uk or 01983 823818

ISLE of WIGHT
DRIVE LESS SEE MORE



Dr Bike

Get your bike checked ready for the summer – for free!

A qualified mechanic will check your bike is safe, will conduct minor repairs, and make recommendations. Drop-in service – no booking required!

Sessions
Medina Leisure centre, 9am to 2pm
Monday 7 August
Monday 21 August (end of summer session)

ISLE of WIGHT
DRIVE LESS SEE MORE
Adrian's BIKE SHOP

THE DOG ACADEMY

Channel 4's The Dog Academy is back!

Are you struggling with your dog's behaviour?
Would you like help to overcome your dog's issues?

Our prime time Channel 4 series is back and looking for misbehaving dogs and their owners.

From small quirks to life impacting behaviour, we've assembled a team of the very best trainers in Britain to help **you** transform your dog once and for all.

Apply now at www.dogsatfivemile.co.uk



SCAN ME



4



Come along to a fun games evening suitable for all the family



Beetle Drive

Can you and your partner be the first to draw the beetle?



Thursday 29th June
Brighstone School Hall
Play starts at 6pm

In aid of local Scouts attending the World Scout Jamboree in South Korea this summer

Tickets £3 per person
£10 for a family of 4 or 5

Pay on the night
Text 07795 001700 to reserve your seats



Raffle
Refreshments



CROSSING THE BAR

Event weekend 9/10/11 June

Crossing the Bar is an arts and community programme. It links coastal walking with the heritage, environment and landscapes of the local area.

It will lead into the opening of a new national trail – the England Coast Path.

This year New Carnival is working in 6 areas on the Isle of Wight, with schools, community groups and heritage partners. There are short and long walks in 6 areas, highlighting the Tennyson Heritage Coast from Ventnor to Totland Bay and celebrating IOW's amazing and varied coastline.

Your school, Brighstone Primary School, is involved in the Brighstone and Compton Bay area. **Honey Bee class** from your school have taken part in a site visit and are also working with New Carnival artists in school.

The walk and event day in Brighstone is Saturday 10 June.

- The short, guided walk in Brighstone starts at 2pm from Warnes Lane car park, next to the school field
- This walk is led by island storyteller Sue Bailey, so there will be a few story stops along the route
- The walk finishes back at the school field. On your return expect flags, music and a short performance

PLEASE NOTE: ALL children and young people MUST BE ACCOMPANIED at this event.

Full details of the walks (all free to join) at:

➤ [Crossing the Bar - Eventbrite Bookings](#)

The walks are open to everyone and in all areas, not just for those children and families involved in the art activities.

Any questions please email: alison@thenewcarnivalcompany.com

Girls rugby

Non-contact rugby sessions



- ✓ Team work
- ✓ Respect
- ✓ Enjoyment
- ✓ Discipline
- ✓ Sportmanship

AGES 7-11

Girls only training is every other Sunday between September and April

Contact rugby sessions also available

Registration day 3rd September 2023, 11am @ IWRFC, Wootton, PO33 4NQ

Register your interest:

vectisrfccoaching@gmail.com

Join the pack
www.vectisrugby.co.uk



VECTIS RUGBY CLUB

CORREO LOUNGE

99 High St, Newport PO30 1AB

FAMILY FUN DAY

~CHARITY EVENT~

SATURDAY
JUNE 24th
11am - 4pm

• Face painting
• Cake & Sweets stall
• Hook a duck
• Coconut shy
• Bouncy castle
• Hair braiding
SPECIAL VISIT FROM SPIDERMAN!!!

ALL MONEY GOES TO CHARITY
KIDNEY CARE UK

FREE ENTRY





Introduction to Junior Golf



We are actively seeking boys and girls under the age of 18 to join our junior section and as a special introductory offer we are offering the following benefits:

- Free Saturday morning tuition by our PGA golf professional.
- Starting date will be Sat 24th June 10.00am 2023
- Free Junior membership to those who attend the classes.
- Junior golf equipment will be provided.
- Discounted playing rates for parents.

Golf is a healthy outdoor activity and you will have the opportunity to play on one of the most picturesque settings in the country.

Pre-registration will be required, so if you wish to participate, please contact the club secretary on:

Tel.01983 755295
Freshwaterbaygolfclub.co.uk

TAPNELL FARM PARK

SUMMER

Season Passes

JUST £38 PER PERSON!

Valid from 25th March - 5th November 2023



ALL WEATHER FUN
Indoor and Outdoor Play

Unlimited FREE entry

Transferable adult season pass when
accompanying a child season pass holder

(*see website for full T&Cs)



NEW FOR 2023!

Falconry Shows,
Maze Maze &
Outdoor
Zip Wires!

ALL WEATHER
FUN FOR JUST
OVER £38 PER
MONTH!

Children
under 2
are free!

Fun
monthly
events!

Full details & to buy online - www.tapnellfarm.com/play

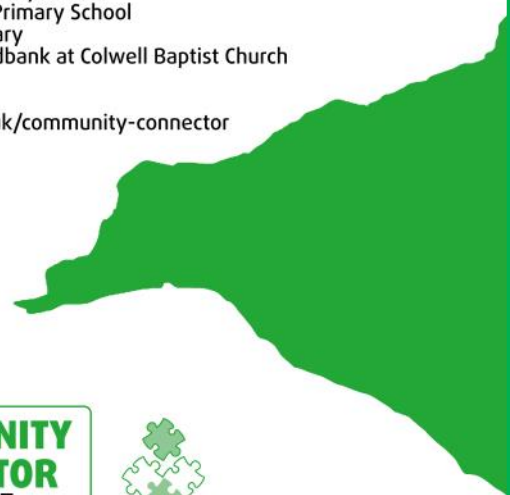
WHAT'S ON WEST WIGHT

COMMUNITY ACTIVITIES

Find out what's on in your local area by picking up your copy at:

West Wight Sports and Community Centre
 Our Place community sessions
 Freshwater Parish Council office
 Totland Parish Council office
 Yarmouth CE Primary School
 Shalfleet CE Primary School
 St Saviour's RC Primary School
 Freshwater Library
 Freshwater Foodbank at Colwell Baptist Church

Download at:
westwight.org.uk/community-connector



COMMUNITY
CONNECTOR
WEST WIGHT



West Wight Sports & Community Centre | LW & HS | Community Action Isle of Wight | foodbank | Our Place

Our Place

GET ACTIVE

West Wight Sports & Community Centre

FREE activities for adults
of all ages and abilities

Try something new
Get active

Meet new people

Different activities each week:

soft archery, table tennis, team games,
fitness classes, and more! Just turn up!



Wednesdays 10:30am - 11:30am

West Wight Sports and Community Centre

More info: 01983 752 168

help@westwight.org.uk

OurPlaceWestWight

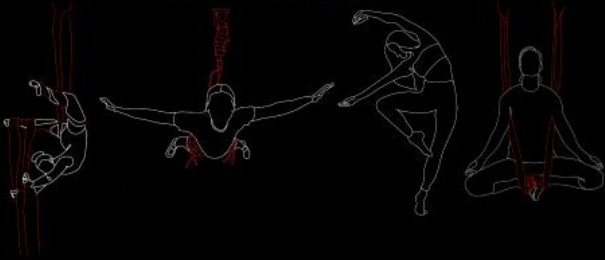
Supported by

HiWCF
LOCAL GIVING FOR LOCAL NEEDS

ARTS

JAYDENE-LEE

DANCE, AERIAL, BUNGEE FIT
AND CIRCUS



Contemporary Dance • Circus • Aerial Silks •
Aerial Yoga • Bungee Fit!

(Classes are based on age/ability).

*Classes for all ages • Workshops • Performance opportunities •
Exams • Birthday Parties • Hen do's • Private Bookings • 1-1's •
Weddings/Events & much more!*

To book/for more information please contact:

info@jaydenearts.com | 07715450640 | <https://bookwhen.com/jaydenearts>

FACEBOOK @jaydenearts1 | INSTAGRAM @jaydene.lee.arts

We Provide Support for
LGBTQ+ young people across
Hampshire & Isle of Wight

Est 1993
BREAKOUT
YOUTH

We cover the following areas:

Southampton	New Milton	Andover	Hart & Rushmoor
Isle of Wight	Marchwood	Eastleigh	East Hants
New Forest	Basingstoke	Romsey	North Hants

SUPPORT • RESPECT • DIVERSITY

Find out more...

☎ 023 80 224 224

✉ hello@breakoutyouth.org.uk

🌐 www.breakoutyouth.org.uk

breakout_youth_uk @

@breakout_youth

Breakout Youth Project

Supported by



Registered Charity No. 1198294 | Company Limited by Guarantee No. 11232821 | Registered Office: 36 The Avenue, Southampton, SO17 1SN



Sun Drum Presents:

**CIRCUS
SKILLS
CLUB**

**EVERY MONDAY
AT 4.30PM-5.30PM**

ADDRESS: ST MARGARETS HALL
LOWTHERVILLE ROAD, VENTNOR,
PO38 1BJ

MOBILE: 07890463771

Made with PosterMyWall.com

ALL AGES
WELCOME
£5 per child
+ £1 per sibling
concessions available

CONTACT:
SUNDRUMFOREST@GMAIL.COM

Vintage Scoops
ice
cream



We'll be at:

**BRIGHSTONE
METHODIST
CHURCH
WEDNESDAYS
2.30-4.30pm**

'Betty' is coming to town!!

Run for Islanders affected by cancer

WESSEX CANCER TRUST

entertainment village for a full day of fun

3k fun run through inflatables, powder paint and foam!

video game themed

RAINBOW RUN BUBBLE FUN 2023

SUNDAY, 25 JUNE 2023 | IW COUNTY SHOWGROUND

With live entertainment from:

Ear Candy **Azi** **The Bandits** Plus much more!

Get in touch at 023 8067 2200 or fundraising@wessexcancer.org.uk

Wessex Cancer Trust, a charity registered in England and Wales (1102216)

Scan to sign up!



Kindly sponsored by

wightfibre because we care

No Limits
Helping Young People Help Themselves

NHS
Isle of Wight
Clinical Commissioning Group

Space4U

A safe haven for young people aged 11-17* living on the Isle of Wight

*Up to age 18 with additional needs

- Out of Hours emotional and practical support with mental health.
- Help to explore your current situation
- Learn self-management techniques
- Enable you to make positive changes

Monday's	Tuesday's
(5pm-8pm by appointment)	(4pm-7pm by appointment)
East Newport Family Centre Furrllongs Newport PO30 2AX	Sandown Family Centre 98 The Fairway Sandown PO36 9EQ

(Virtual support available during Covid)

Contact us today to find out more:

02380 224 224

07741 665182

enquiries@nolimitshelp.org.uk



SCAN ME



www.nolimitshelp.org.uk
023 8022 4224

GIRLS ONLY FOOTBALL



Sandown Soccer
Love The Game

INTRODUCING OUR SANDOWN SOCCER GIRLS ONLY FOOTBALL SESSION!

OUR FUN SESSION WILL BE:
WHEN: Every Wednesday. 5pm to 6pm
WHERE: The Bay CE Primary School, Sandown
COST: £4 for the 1 hour session

To Book: Text your child's name, school, year group and parent name to **07594 389531**

Find us on **facebook**
Sandown Soccer - Isle of Wight

IS YOUR CHILD TOO YOUNG TO JOIN A TEAM?

DOES YOUR CHILD WANT TO BUILD THEIR CONFIDENCE IN A SPORTING ENVIRONMENT?

DOES YOUR CHILD WANT TO PLAY FOOTBALL BUT NOT IN A TEAM YET?

IF YOU'VE ANSWERED YES TO ANY OF THOSE QUESTIONS, WE'VE GOT THE PERFECT SOLUTION!

WE PROVIDE A SAFE, ENJOYABLE ENVIRONMENT WHERE CHILDREN CAN HAVE FUN WHILST IMPROVING THEIR FOOTBALL SKILLS.

OURS AIMS ARE:

- TO ALLOW CHILDREN TO HAVE FUN THROUGH FOOTBALL
- TO IMPROVE CONFIDENCE AND SOCIAL SKILLS.
- TO LEARN AND IMPROVE BASIC FOOTBALL SKILLS: CONTROL, PASSING, DRIBBLING.
- TO DEVELOP AGILITY, BALANCE, CO-ORDINATION, SPEED (ABC'S).

Our fully FA qualified coaches have up to date First Aid training and are DBS checked. Each session will be packed full of fun games played in teams, and as individuals, to help children build friendships as well as independence.

To Book: Text your child's name, school, year group and parent name to **07594 389531**

Libraries are *here to help*

Jo and Louise from the Isle of Wight Library service will be at Our Place on Monday 22 May to chat with you about the great services and activities libraries offer, including:

- ✓ Books
- ✓ E-books and e-audio books
- ✓ Magazines and newspapers
- ✓ Free computer and Internet access
- ✓ Regular groups and activities for adults and children
- ✓ Local information and much more!

Come along and try out some of the library apps and online services. You will be able to join the library on the day!



MINI MOVERS!

- HOPPERS
- BEAN BAGS
- HOOPS
- SOFT PLAY
- BALL PIT
- BALLS

Wednesdays
09:15 - 10:15

Soft play and toys for children aged 0 - 4 years,
£4 per child, additional siblings £2 each
Booking advised

DYNAMOS CRICKET

This is our game.

dynamoscriccket.co.uk

Join us at:
Cowes Cricket Club (COW Community Club)

Session dates:
Friday evenings - First Session 28th April, Last Session 16th June

Session timings:
5.15pm-6.15pm

Contact:
For more info, email Ash Goldsmith - ash@cowescriccketclub.co.uk

Starting on Friday 28th April, Mr Goldsmith will be running eight Dynamos Cricket sessions for children aged 8-11 at Cowes Cricket Club.

The sessions are open to all children aged 8-11 (not just from Brighstone) and will run between 5.15pm and 6.15pm each Friday evening, with the final session taking place on Friday 16th June.

The cost of the eight-week programme is just £20 - to sign up your child, please click on the following link - <https://ecb.clubspark.uk/Dynamos/Course/3967cab0-ff75-4535-94ed-8c5393c65e6e>. For signing up, your child will receive a personalised playing shirt, Topps Cricket Attax Cards and access to the Dynamos App.

Any children that sign up could end up as part of the Cowes U11 hardball squad, whilst any girls that sign up will be part of the Cowes U11 Girls Dynamos squad for the 2023 season.

ALL STARS CRICKET

Newport IOW Cricket Club
Sun 04 Jun - Sun 23 Jul 2023
09:30 - 10:15

https://ecb.clubspark.uk/AllStars/Course/a4c8988d-ce72-437d-a8bd-888bd84ff51c?fbclid=IwAR3vYJ-NdKPleQK3CxmUPaD8u0NCyA-Q4m1CToJMc3LFLN8_Ejq7QEsj0KmU

<https://ecb.clubspark.uk/Dynamos/Course/6b41c358-8843-4ea4-996c-ee8b87aec96f?fbclid=IwAR0liUvF8mcUprEC->

Join us for All Stars at Ventnor CC

Steephill Rd, Ventnor, PO38 1UF



Open to 5-11 year olds

Tuesdays 4 - 4.45pm

Starting Tuesday 23rd May

Phone Ruth on 07917306984 for details or sign up online.

SCOOPS WHEATSHEAF LANE YARMOUTH AFTER SCHOOL ICE CREAM 2.50



PLAY JUNIOR RUGBY

Vectis Rugby club have spaces open in all age groups from U5 to U12

Every Sunday at IWRFC in Wootton at 10am.

First two sessions are free
Email for more information

Email: vectisrfccoaching@gmail.com

www.vectisrugby.co.uk



Sessions are all delivered by experienced coaches with first aid qualifications and DBS Checks.

CHILDREN'S SHOW SCHEDULE 2023

SPRING SHOW

Saturday 1st April

Wilberforce Hall, Main Road, Brighstone
1.30pm to 4.00pm Presentations at 4.00pm

125th BHS MARQUEE IN NEW SUMMER SHOW

Saturday 15th July

Recreation Field, New Road, Brighstone
Marquee opens 1.30pm Presentations at 4.00pm

AUTUMN SHOW

Saturday 7th October

Wilberforce Hall, Main Road, Brighstone
1.30pm to 4.00pm Presentations at 4.00pm

SPRING SHOW

Please state your age on the entry form, then it will be taken into consideration.

- 72. A Painting or Drawing for King Charles’s Coronation.
- 73. A driftwood model of a dinosaur.
- 74. 4 Fairy Cakes, made and decorated.
- 75. Floral art – An Easter Posy.
- 76. 4 Decorated Rich Tea Biscuits, Coronation Themed (judged on decoration only).
- 77. Handwriting:

God save our gracious King!
 Long live our noble King!
 God save the King!
 Send him victorious,
 Happy and glorious,
 Long to reign over us,
 God save the King.

AUTUMN SHOW

Please state your age on the entry form, then it will be taken into consideration.

- 118. A Christmas Card.
- 119. 4 Christmas or Halloween cup cakes made and decorated.
- 120. A driftwood reindeer.
- 121. My favourite pot plant, grown by entrant.
- 122. An Autumn painting or drawing A4 max.
- 123. A model made from Lego, no bigger than 30cm x 40cm
- 124. Handwriting:

Rain, rain go away,
 Come again another day.
 Rain, rain go away,
 Little Johnny wants to play.

SUMMER SHOW

CHILDREN’S CLASSES

Prize money for children’s classes: 1st - £1.50, 2nd - £1, 3rd - 50p. Your age must be displayed clearly, then it will be taken into consideration.

Classes 156 and 163 must be arranged by the exhibitor on site without assistance.

For ages 9 and under:

- 151. Something new from something old.
- 152. My pet - a painting/drawing A4 max.
- 153. My favourite “snapshot” (must be taken by entrant).
- 154. A creature made from a vegetable
- 155. A creature made from driftwood and shells.
- 156. Garden flowers in a teapot.
- 157. A miniature living garden (in a bowl or pot).
- 158. 4 decorated biscuits (judged on decoration only).
- 159. 4 pieces of flapjack, any variety.

For ages 10 to 16

- 160. A miniature scarecrow – maximum size 30 cm.
- 161. Still Life – a drawing or sketch.
- 162. My favourite “snapshot” (must be taken by entrant).
- 163. A miniature herb garden (in a bowl or pot).
- 164. A miniature building made from driftwood and shells.
- 165. A carrot cake.
- 166. 4 decorated fairy cakes.

For all ages up to 16

- 167. New class for 2023 – Grow a squash any variety.
- 168. Handwriting:
 Incy, wincy spider climbed up the spout,
 Down came the rain and washed the spider out,
 Out came the sun and dried up all the rain,
 And incy, wincy spider climbed up the spout again.

CHILDREN’S ENTRY FORMS (ALL ENTRIES ARE FREE)

AUTUMN SHOW 2023

Entry forms must reach the Show Secretary **no later than Wednesday prior to the show**. Please post your entry in the box at The Village Shop, Brighstone or hand to the Show Secretary at Bluebells, North Street, Brighstone.

NAME (BLOCK CAPITALS) _____ AGE _____

ADDRESS _____

PHONE NUMBER _____

Children’s Classes

Please circle: 118 119 120 121 122 123 124

Number of entries _____

✂️*****

SUMMER SHOW 2023

Entry forms must reach the Show Secretary **no later than Wednesday prior to the show**. Please post your entry in the box at The Village Shop, Brighstone or hand to the Show Secretary at Bluebells, North Street, Brighstone.

NAME (BLOCK CAPITALS) _____ AGE _____

ADDRESS _____

PHONE NUMBER _____

Children’s Classes

Please circle: 151 152 153 154 155 156 157 158 159

160 161 162 163 164 165 166 167 168

Number of entries _____

✂️*****

SPRING SHOW 2023

Entry forms must reach the Show Secretary **no later than Wednesday prior to the show**. Please post your entry in the box at The Village Shop, Brighstone or hand to the Show Secretary at Bluebells, North Street, Brighstone.

NAME (BLOCK CAPITALS) _____ AGE _____

ADDRESS _____

PHONE NUMBER _____

Children’s Classes

Please circle: 72 73 74 75 76 77

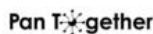
Number of entries _____



What is the Living Well & Early Help Service?

We are focussed on identifying and providing support for people before they reach crisis and working with communities to build capacity to provide that support

Working in Partnership to reach all communities of the Isle of Wight



FOOTBALL 4 ALL PROJECT

We focus on the individual - on their strengths, passions and capabilities - building on their existing support networks, family and friends within their community



LIVING WELL & EARLY HELP 5 KEY PRINCIPLES

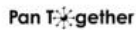
- 1 Community
- 2 Resilience
- 3 Relationships
- 4 Person Centered
- 5 Partnership



ASPIRE WOODWORK GROUP MAKING BAT BOXES



We will support people to look for practical solutions wherever possible and focus on what the person can do for themselves using their skills and experience rather than automatically looking for a service response.



CRAFTERNOON SESSION

At the community level, the service will strengthen partnerships between local organisations involved in community wellbeing, including parish and town councils, local community organisations and Island-wide organisations (statutory and voluntary) that operate at local levels.

The aim is to establish semi-autonomous community 'hubs', similar to those already existing in areas like Ryde, West Wight, Ventnor and Pan, throughout the Island. The nature of the hubs will vary, depending on the needs and resources of each area.

EVERYONE HAS THEIR OWN STRENGTHS, PASSIONS AND CAPABILITIES

BUILDING STRONG COMMUNITIES

We promote and encourage connections, developments and contributions by individuals and the community. By spending time identifying the strengths, passions and capabilities of individuals, services and places we support communities to help themselves and create local solutions.

Pan Together providing Christmas Lunch



Ventnor Community Shed

Stepping Stones Homelessness prevention program



Our Place Mindfulness Coloring

WAVES OF WELLNESS - SUICIDE PREVENTION PROJECT



INDIVIDUALS - EVERYONE HAS STRENGTHS, PASSIONS & CAPABILITIES.
Everyone within our communities has their own skills, knowledge and passions. Living Well & Early Help identifies, encourages and nurtures individuals to utilise them. Deficit approach define communities and individuals in negative terms. An Asset approach accentuates positive capability to identify problems and activate solutions.

SERVICES - PEOPLE ORGANISED AROUND ASSETS.
Services are generally professionals or paid services who are structurally organised. They include government agencies and private business, as well as schools, etc. They can all be valuable resources. The assets of these institutions help the community capture valuable resources and establish a sense of civic responsibility.

PLACE - PEOPLE LIVE WHERE THEY LIVE FOR A REASON.
Land, buildings, heritage, public and green spaces are all examples of assets of the community. Individuals tend to be in a specific place for a specific reason. The people living in a community are most likely to know what its strengths are and how to utilise them.

CONNECTION - PEOPLE SUPPORTING PEOPLE.
Small informal groups of people, such as clubs, groups and common interest activities are critical to the delivery of the Living Well and Early Help Service. They don't need complicated processes. They are just coming together around a common interest of their individual choice.

VISIBILITY - BEING PART OF THE COMMUNITY.
The Living Well & Early Help workers are based within the community working in agile ways within defined localities finding spaces within community hubs, libraries, cafes etc. People should be able to approach workers individually as well as being referred in by any person or service. The Living Well & Early Help service supports people to develop their own solutions and ways of achieving their best possible lives, drawing on family and community resources, before considering commissioned or statutory services. Living Well and Early Help workers invest time in building relationships and understanding what a person's idea of their best life is. It also helps people to develop and build their own capacity and connections, so that they can stay strong and independent.

DEVELOPMENT - INDIVIDUALS CONNECT INTO A COMMUNITY.
Living Well and Early Help recognises that the exchange between people sharing their passion, gifts, skills and assets creates connections, and these connections are a vital asset to the community. It takes time to find out about individuals; this is normally done through building relationships, person by person. The social relationships, networks and trust form the social capital of a community. The Living Well and Early Help service knows the value of these assets and the importance of building relationships to increase the social capital within each unique community.

reception@lweh.org.uk 01983 240732

Tired Of Swimming Lengths?

Underwater Hockey is a great way to stay fit and still enjoy the pool. No two games will ever be the same, so why not try something different? We promise you won't get bored!



Junior Underwater Hockey

There are many junior Underwater Hockey teams around the country. It's a great way for children to enjoy the game and get some exercise at the same time.

Underwater Hockey is a team sport so there is a great opportunity for children to make some friends along the way.

As long as you are a confident swimmer, you should be able to play Underwater Hockey.

**Many clubs have a free taster session!
Contact your local club to find out.**

How To Get Involved

There are over 100 teams across Great Britain so finding your local team shouldn't be too difficult! There are details below to show you your local team contact.

There are details on our website as well gbuwh.co.uk

Or you can find us on social media, feel free to send us a message, and we can help you find a team.



You can find details for your local club here:



Photo Credits:
Chris Alwin, Vicki VanDer Westhulzen Ritslanova, Gabriel Holguin,
Australia UWH, Canada UWH & Spain UWH

Underwater Hockey (Octopush)



Great Britain Underwater Hockey



@gbuwh



What Is Underwater Hockey?

Underwater Hockey is a team game played on the bottom of the swimming pool!

There are two teams competing to get a small weighted puck into their opponents' goal. The game is played exclusively on the bottom of the pool so players need to hold their breath whilst playing.

Team work is so important in Underwater Hockey, each team has 6 players and 4 rolling substitutes.

Players use a small stick to move the puck. This stick is the only way a player can move the puck.

What Equipment Do You Need?

Players wear a mask, snorkel, fins, water polo hat, and glove. Fins allow players to swim much faster meaning the game can move extremely quickly even underwater.

Don't worry though if you want to give Underwater Hockey a try, many clubs have equipment they can lend out to new players.

Who Can Play?

Underwater Hockey can be played by almost any age of player! Junior clubs tend to welcome players above the age of 8 years old. The only real requirement for Underwater Hockey is that you can swim!

Many clubs also offer free taster sessions.

Team GB Underwater Hockey

Underwater Hockey was founded in Great Britain, and the British teams have been to many World Championships over the years.

There are currently 4 different categories, which are then split again into male and female teams. Under 19s, Under 24s, Elite, and Masters.

Great Britain has an amazing history representing their country around the world. With some players having multiple medals to their name.

Underwater Hockey is played around the world, with over 40 countries across 6 continents playing the sport.