

# The Buzz



## 26th May 2023



Learning and Achieving Through Love,  
Courage and Respect

Dear parents, carers and children,

This morning, we celebrated **external awards**; the table was full of certificates, rosettes and trophies, for swimming, bell ringing, handwriting, iced biscuits, Walk the Wight and more! We also welcomed Boni, who presented the winners of the handwriting competition with their certificates. The Y2 children received a class certificate for their enthusiasm during the Y2 quizzes; they loved them so much, they didn't want them to end! Well done to all of you; what superstars you are.

On Tuesday, **Honey Bee class** enjoyed an amazing day out at the IOW Royal County Show Education Day. They learned about the unique woodland here on the Isle of Wight and how, because we don't have any deer, our woodland is much more productive and thriving because we don't have anything which eats the undergrowth. We also got to see the pigs, goats, calves and chickens, and learn all about some of the different farming processes on the Island (see more photos in this Buzz and on Facebook).



Today, the children had a wonderful experience with the **Bournemouth Symphony Orchestra**, who performed for the whole school before holding a workshop for Ivy Bee class. See later in this Buzz for more information and photos.



Sharing a story is a lovely thing to do with your child, no matter whether they are in Reception or Y6. It's an opportunity for some quality time reading and talking about the book or poem, exploring the story, characters and vocabulary, looking at the pictures, and asking questions. We will be holding some **Share a Story sessions** over the next few weeks (see the dates on p11 of this Buzz). We look forward to seeing you there!

On Thursday 15th June, the BSA will be holding a pop-up **Fathers' Day shop**, which is a chance for your child to purchase a special gift for a special loved one in their lives. You will find the form in the email that was sent out yesterday, and paper copies are also available in the front foyer.

We have had quite a few people express an interest for our community **'Spruce Up Our School'** day tomorrow; if you have one or two hours spare, feel free to pop along and lend a hand with weeding, trimming, painting etc... The more the merrier! We look forward to seeing you there.



There has recently been a bit of uncertainty around the possibility of **school closures**. Today, you will have received some further information about this. I would encourage you to read the full report (using the link in the email). From this, you will see that Brighstone Primary is not one of the named schools. On behalf of the governing body and our school team, please be reassured that Brighstone Primary continues to remain part of this strong village community.

I wish you all a lovely half term holiday, and I look forward to seeing you on Monday 5th June.

Best wishes, Mrs Lennon and the Brighstone team

## Collective Worship - Friendship

This week's Collective Worship theme is **Pentecost—Knowing God's Presence**

We heard about the story of Pentecost, when the first disciples received the gift of the Holy Spirit. After Jesus had been crucified, the disciples were confused, frightened and unsure of what the future held, but a dramatic transformation occurred in their lives after the events of Pentecost. Filled with the Holy Spirit, the disciples suddenly became bold, courageous and passionate about sharing the news of Jesus' resurrection with others.

Many people became followers of Jesus after hearing the disciples preaching. The Church was born! Pentecost is often known as the birthday of the Church.

The colour of Pentecost is red because the Bible says that when the disciples received the Holy Spirit it looked as if tongues of fire were above their heads.



### Prayer for Pentecost

God the Father, watch over us (arch arms over head)

God the Son walk with us (stretch arms out to either side)

God the Spirit, work through us (cross arms over chest)

So that your kingdom will come and your will be done (gesture out to the world)

Amen



"A friend is always loyal, and a brother is born to help in time of need." Proverbs

17.17



## School Dinners

Children in **Year R, 1 and 2** are entitled to a 'universal' free school meal everyday.

Children in Years 3-6 are charged at **£2.55** per day.

Baguettes now available on Tuesdays and Thursdays instead of JPs (ham, cheese or tuna)

Week 1	Monday	Tuesday	Wednesday	Thursday	Friday
Option 1	Pizza	Bangers and Mash	Roast Turkey	Beef bolognese	Fish Fingers
Option 2	Tomato Pasta	Veggie Sausages	Tomato Pasta	Tomato Pasta	Veggie dippers
Dessert	Ice cream	Lemon Slice	Shortbread	Jelly	Crispy bar

## Poetry Corner

### Buttercup

Buttercups gleam, bright butter gold,  
buttercup, buttercup, buttercup-cup.

Buttercups, tall, rambling wild,  
buttercup, buttercup, buttercup-cup.

Butterflies and daisies dancing in the meadow,  
buttercup, buttercup, buttercup-cup.

Bare legs tickled by green and yellow,  
buttercup, buttercup, buttercup-cup.

Buttercups singing the summertime tune,  
buttercup, buttercup, buttercup-cup.

Buttercups close at the rise of the moon,  
buttercup, buttercup, buttercup-cup.

by Mandy Coe

## Grammar and Spelling Matters

Each week we will include a mini grammar or spelling lesson so you know what your children are learning!

### Punctuation: colon and semi-colon

## COLON & SEMICOLON

### COLON

The colon (:) is a punctuation mark consisting of two dots one over the other.

**USAGE:**

- Introduce a list of things.
- Introduce a dependent clause that helps to emphasize or illustrate the idea in the preceding clause.

**EXAMPLES:**

- A man needs three things to survive: air, water, and food.
- I have packed my cricket kit with the equipment I need: bats, gloves and pads.

### SEMICOLON

The semi-colon (;) consists of a dot above a comma.

**USAGE:**

- Separate sentences where the conjunction has been left out.
- Link sentences which also use words such as otherwise, however, therefore, as connectors.

**EXAMPLES:**

- Sumit likes to play cricket; Amit likes to play soccer.
- I drank lemonade; Manish drank tea.
- I did not finish reading the text; instead, I watched the news.

[www.esgrammar.org](http://www.esgrammar.org)

## Safeguarding

If you have a concern about a child you can call the police on 999 if you feel they are at risk of immediate harm

Contact us: [safeguarding@brighstoneprimary.org.uk](mailto:safeguarding@brighstoneprimary.org.uk)

Speak with our DSL Mrs Jones in the school office

You can contact the NSPCC:

### Contact the NSPCC Helpline

If you have any concerns at all about a child's safety or wellbeing, don't hesitate to contact us.

Call us or email [help@nspcc.org.uk](mailto:help@nspcc.org.uk)

0808 800 5000

Find out more

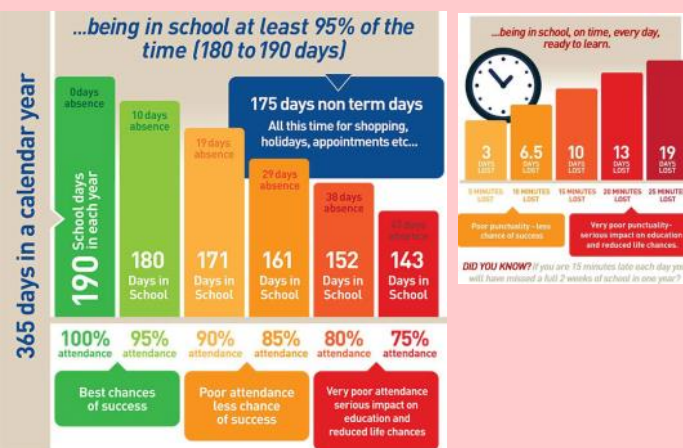
Or call children's services 0300 300 0117

## Attendance Matters!

Week Commencing 22nd May  
Whole School attendance target: **96.5%**

Actual Attendance: **95.58%**

Late marks this week: 5



# Golden Book

## Outside Achievements

Brighstone Show, Handwriting, Horse riding, Swimming, Walk the Wight, Dancing and Bell ringing



Love

Courage

Respect



Try one or more of these during half-term

## 10 things to boost your mental wellbeing



# Online Safety

My friend is asking me to download a new game on my tablet.



What should I do?

## Scenario Questions

How many can your child answer correctly?

I am watching videos online and I have seen something that has upset me.



What should I do?

I am playing a game on my tablet and a message has popped up on the screen.



What should I do?

I am playing a game on my tablet and it has asked me to buy something called an add-on.



What should I do?

Someone is sending me unkind messages online.



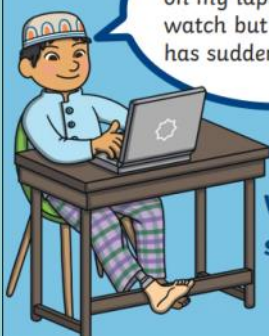
What should I do?

Someone I am talking to on my game has asked me which school I go to.



What should I do?

My Mum has put a video on my laptop for me to watch but another video has suddenly appeared.



What should I do?

I am playing a game online and a message from someone I don't know has appeared on the screen asking if they can play too.



What should I do?



## BRIGHSTONE CE PRIMARY NEEDS YOUR HELP

**Saturday 27th May  
Community spruce up the  
school for summer day.**

**Come along to the school  
between 10am and 3pm.**

We have jobs to suit everyone from weeding to painting to tidying up the play areas.

We have a limited amount of equipment so please do bring your own if you can, if you can offer help in specialist areas such as hedge cutting and jet washing please contact Emily Rufian on [e.rufian@brighstoneprimary.org.uk](mailto:e.rufian@brighstoneprimary.org.uk)



Saturday 27<sup>th</sup> May 2023

We will be supporting Brighstone Primary and working with the BSA. to paint our shared shed and our fences around the Pre School area.

If anyone has a free hour and a paint brush,  
we will be in our preschool garden from  
9.00 - 12.00.

We thank you in advance for your help.



BRIGHSTONE CE PRIMARY  
NEEDS YOUR HELP

Saturday 27th May  
Community spruce up the  
school for summer day





PRESENTING...



# SCIENCE DAY 2023



**Friday 14th July**



**PARENTS WE NEED YOU!**



PLEASE COME AND SHARE YOUR SCIENCE CAREER WITH OUR CHILDREN, BY PRESENTING A SHORT EXPLANATION OF WHAT YOU DO AND HOW SCIENCE ENABLES THIS. PROPS ARE WELCOME. IT'S A GREAT OPPORTUNITY FOR THE CHILDREN TO ASK QUESTIONS ABOUT WHAT YOU DO AND LEARN MORE ABOUT FUTURE CAREERS. WE WOULD LOVE TO HEAR FROM VETS, DOCTORS, NURSES, ELECTRICIANS, GARDENERS, ENGINEERS AND ANY AND ALL OTHERS, WHOSE CAREER IS SCIENCE BASED. PLEASE EMAIL MRS DENNESS: [LDENNESS@BRIGHSTONEPRIMARY.ORG.UK](mailto:LDENNESS@BRIGHSTONEPRIMARY.ORG.UK)



# Class News

## Honey Bee Class

On Tuesday, Honey Bee class enjoyed an amazing day out at the IOW Royal County Show Education Day. They learned about the unique woodland here on the Isle of Wight and how, because we don't have any deer, our woodland is much more productive and thriving because we don't have anything which eats the undergrowth. We also got to see the pigs, goats, calves and chickens, and learn all about some of the different farming processes on the Island.





# Class News

## Honey Bee Class

This week, Honey Bees designed and painted their flags for the Crossing the Bar walk which will take place in June. They discussed all of the beautiful scenery which they saw throughout their trip to Compton bay and made sure that they included various elements of these in their flag designs.

The Crossing the Bar project is one that celebrates the Island's heritage coastline and celebrates the beauty that we have here. On Saturday 10th June there will be a walk taking place at 2pm, which will leave from Warnes Lane car park. The walk will be accompanied by Island storyteller, Sue Bailey who will narrate as we walk. This is an amazing opportunity for the children to showcase their fabulous flag designs and take part in a fantastic project. All families are welcome! To book you and your child onto the walk, please follow this link [Crossing the Bar 2023 | Eventbrite](#) and book onto the Brighstone short story walk.



# Class News

## Bournemouth Symphony Orchestra

This afternoon we were treated to an amazing performance by the Bournemouth Symphony Orchestra.

They played us some beautiful music, including Rolling in the Deep by Adele and the introduction to Harry Potter. They introduced us to many of their orchestral instruments, such as the French horn, oboe, clarinet, cello and the tuba. They explained how their instruments make a sound and how our brains interpret the sound.

They played music all about the sea (because we're on the IOW), including Yellow Submarine & The Wellerman Song (which the children all joined in with), and Wade in the Water. The children were mesmerised! Some were dancing with their heads and hands - it really was difficult to sit still!

Ivy Bee class were then lucky enough to have a master class from the musicians. They were split into different orchestral groups and were given the opportunity to accompany the musicians in a piece called the Padstow Lifeboat.

There was a string section with cellos with Casper, and Wilbur on his violin; a wind section with clarinets, piccolos and flutes and a big brass section, with our own musicians Lucy, Nico, Charlie and Leigh heading this up.

It was a wonderful opportunity for the children to work with a professional orchestra.

It was a fabulous afternoon: all the children were inspired and engaged.

Thank you to Mrs Sharp (Music Subject Leader) and Nia Collins (Isle of Wight Music Hub Lead)





If your message is **urgent** or about **attendance** contact Mrs Pelosi in the **office**:  
**01983 740285**  
office@brighstoneprimary.org.uk  
Office Hours 8am - 4pm

If you would like to speak with the **Headteacher** Mrs Lennon, you can find her at the school gate every morning or you can call 740285 to make an appointment with her



For **general enquiries** you can call or email the office, text the school messaging service or send a message to our school **Facebook** page: <https://www.facebook.com/BrighstoneCEPrimarySchool>  
*Our Facebook page is open so you do not need a personal account to view it*

If you have concerns about your child's **learning** and progress, email the class teacher in the first instance and allow at least 1 working day for a reply:

Years R, 1 & 2 - teacher.bumblebee@brighstoneprimary.org.uk  
Years 3 & 4 - teacher.honeybee@brighstoneprimary.org.uk  
Years 5 & 6 - teacher.ivybee@brighstoneprimary.org.uk

If you have concern regarding **safeguarding** or your **child's mental health and wellbeing** please contact Mrs Jones. You can speak to her on the playground every morning, call into the school office or email m.jones@brighstoneprimary.org.uk  
safeguarding@brighstoneprimary.org.uk

Our **Newsletter** is published every Friday with key information for parents and carers. You can find it on our school website: <https://www.brighstoneprimary.org.uk/category/the-buzz/>

## Contact us



If you have a **safeguarding** concern about a child outside of school hours you can call the police on 999 if you feel they are at risk of immediate harm or contact Children's Services on 0300 300 0117

### Gates

The gates are closed at 3pm every day, rather than at the end of clubs. Please collect your children from after-school clubs from the hall door, except for the bell ringers (St Mary's Church) and cricket club (Warnes Lane).

Many thanks.

## Key dates this year

- Friday 26th May: Last day of term
- Monday 29th May - Friday 2nd June: Half term
- Friday 9th June: Class photos
- Friday 9th June: Ivy Bee story time session with parents (2.25pm)
- Friday 16th June: Mufti day in return for cakes for Northcourt Manor Open Gardens
- Friday 16th June: Honey Bee story time session with parents (2.25pm)
- Monday 19th—Wednesday 21st June: Y4 Kingswood residential
- Friday 23rd June: Sports Day (details to follow nearer the time)
- Monday 26th June: Tony Peek Poetry Workshops
- Thursday 29th June: Y6 Leavers' Service at Portsmouth Cathedral (letter to follow nearer the time)
- Friday 30th June: Bumble Bee story time session with parents (2.25pm)
- Tuesday 4th and Wednesday 5th July: High school transition days
- Tuesday 4th July: Whole school transition morning
- Friday 7th July: Reports go home
- Tuesday 11th July: Forest Day
- Tuesday 11th July: Parents Evening
- Friday 14th July: Science Day
- Monday 17th—Tuesday 18th July: Y6 Corfe residential (details to follow)
- Thursday 20th July: School closed for staff development day
- Friday 21st July: School closed for staff development day





Brighstone School Association

# FATHERS DAY SHOP



£3 per gift

The children are being given the opportunity to purchase a special gift for a special loved one for Fathers Day

If you would like your child to purchase a gift, please see the email sent home and return form/money in a named envelope or order through our Pta events page by Friday 9th June.

[pta-events.co.uk/brighstoneschoolassociation](http://pta-events.co.uk/brighstoneschoolassociation)

Your child will visit our shop on Thursday 15th June to collect their gift

Made with PosterMyWall.com

Brighstone School Association

YOUR HELP IS NEEDED  
**Sunday  
18th June**

We have the opportunity to run the Tea/cake stall at the garden opening @ Northcourt. This is a great fundraiser for us, and we have raised over 1K before. However, we know the date clashes with the festival.

If you can help us run the teas on this date can you let the BSA know.



Brighstone School Association

# Preloved Uniform Sale

Next Sale from

**2nd May 2023**

The sale rail will be up by the school office.  
Money will be collected in the donation box.



Unwanted uniform donations welcome. Please place in box in office foyer the week before each sale.

Made with PosterMyWall.com

Brighstone School Association

# PLANT sale



Located by the school office

We are looking for donations

Vegetables  
Herbs  
Annuals  
Perenials

If you have any surplus plants after sowing your seeds this year, please think about donating them to us to raise money for the BSA.

Made with PosterMyWall.com

## Have you seen Tax-Free Childcare (TFC) - What is it?

Government support for **working parents**, including the self-employed, **in the UK working** at least 16 hours at the National Minimum Wage.

For children aged 0-11 or until 16 if disabled.  
(Preschool/ Breakfast/Afterschool/Holiday Club)



- Parents and carers can earn up to £100k each per year and still be eligible for TFC.
- For every £8 a parent pays into an online account, the government will add an extra £2.  
**Up to £2,000 per child per year** or £4,000 each year if the child has a disability.
- This is for parents who **aren't** receiving Tax Credits, Universal Credit, or childcare vouchers.

### Setting up an account and payments

- Parents apply for an account through: [childcarechoices.gov.uk](http://childcarechoices.gov.uk).
- HMRC confirm via email, and you can set up their TFC account.
- Accounts can be opened at any time of the year and can be used straight away.
- Parents search for provider in the 'Your Tax-Free Childcare account' section of the account homepage by name, address, postcode. (**Niton Preschool, School Lane, Niton PO38 2BP**)
- Parents pay money into the TFC account. The top up will be added automatically.
- The government top-up is applied to deposits made for each child, not household.
- Parents can get up to £500 every 3 months (up to £2,000 a year) for each child to help with the costs of childcare.
- Parents pay the childcare provider directly through the childcare account using bank transfer.
- **For every £8 a parent pays into this account, the government will pay in £2 to use to pay the provider.**
- Parents can use Tax Free Child to pay for additional childcare costs:  
**Our preschool consumable charges: You pay £16.00 Government pays £4.00.**







In partnership with West Wight Arts Association and Isle of Wight Music Hub

## *From the Hebrides to Padstow* Freshwater Memorial Hall

A celebration of the Sea for all the family with BSO chamber players  
featuring music by Handel, Adele and The Beatles.

BSO On Your Doorstep

### **BSO 9-piece ensemble** Sunday 28 May 5pm

£10 (adults), £5 (U18s), £25 (family 2 adults, 2 U18s)

Online at <https://bsolive.com>



Dear Brighstone Primary,

We're really looking forward to visiting your school for a musical assembly and have a go session with some instruments. As part of BSO's visit to the Isle of Wight, we're doing a family concert at Freshwater Memorial Hall on the Sunday (Sunday 28 May at 5pm) after your school visit. For the four schools we're visiting prior to the concert, we're offering discounted tickets at £5 off per adult ticket, so we'd love it if you can share the attached flyer and information here on how to get a ticket. We hope to see as many of you as possible there on the day.

To book tickets visit this page (<https://bsolive.com/events/bso-on-your-doorstep-isle-of-wight/>) and quote the promo code **BSO2805dstep**.

Hope to see you there!

**BSO Participate team**



# FOOTBALL FUNDRAISER RAFFLE

FRIDAY 2<sup>ND</sup> JUNE FROM 3.30PM

@ THE THREE BISHOPS

IN SUPPORT OF

## BRIGHSTONE YOUTH FC

COME ALONG FOR A CHANCE TO WIN ONE OF OUR AMAZING PRIZES

(£2 A TICKET OR £10 A BOOK OF 5)

THERE WILL ALSO BE A BOUNCY CASTLE

ALL MONEY RAISED WILL GO TO THIS NEW BRIGHSTONE TEAM FOR THEIR FIRST YEAR IN THE LEAGUE AND ALSO PROVIDE A DONATION TO BRIGHSTONE PRIMARY SCHOOL AS A THANK YOU FOR THE USE OF THEIR FACILITIES AND CONTRIBUTE TO THEIR NEW HEATING SYSTEM



WE WOULD LIKE TO SAY A HUGE THANK YOU TO ALL BUSINESSES AND SOLE TRADERS FOR THEIR AMAZING DONATIONS



### SOME OF OUR AMAZING RAFFLE PRIZES ....

- VW ID BUZZ FOR THE WEEKEND
- OVERNIGHT STAY AT THE THREE BISHOPS
- FRUIT HAMPER FROM BRIGHSTONE STORES
- VOUCHER FOR CRAVE ICE CREAM, VENTNOR
- PRIZE FROM BLUEBELLS OF BRIGHSTONE
- DOGGY GOODY BAG FROM DOGGOS DAY OUT
- OLIVE TREE PRINT BY CHRIS ECCLESTON
- JJ'S BOUNCY CASTLES £25 VOUCHER
- HAMPER OF BEACH GOODIES FROM GRANGE FARM
- MEAL FOR 2 AND A BOTTLE OF WINE AT THE SUN INN, HULVERSTONE
- 2 NIGHT STAY AT BROOK FARMHOUSE COTTAGES
- MAKE-UP LESSON WITH HANNAH ECCLESTON
- VOUCHER FOR THE WIGHT MOUSE INN, CHALE
- VOUCHER FOR THE CROWN INN, SHORWELL
- OVERNIGHT STAY FOR 2 PEOPLE WORTH £100 AT TWIN OAKS, NEW FOREST
- SWIMMING VOUCHERS FROM WEST WIGHT SPORTS CENTRE
- 6 WEEKS OF CIRCUIT TRAINING WITH MICHAELA MARIE
- VOUCHER FOR A CREAM TEA FOR TWO & £10 OFF JEWELLERY AT IOW PEARL
- FREE ENTRY FOR FOUR TO FARRINGFORD GARDENS
- VOUCHER FOR THE NEW INN, SHALFLEET
- CASE OF PERONI FROM YATES BREWERY
- SELECTION OF WINE FROM EURO VINES
- FREE ICE CREAM FOR A FAMILY OF FOUR FROM VINTAGE SCOOPS
- 50% OFF VOUCHER FOR A TREATMENT WITH HANNAH DAVIES OF RELAX ISLE OF WIGHT
- 2 X VOUCHERS FOR LUCY JADE BEAUTY THERAPY
- SET OF SMELLIES
- COCKTAIL HAMPER FROM BRIGHSTONE NEWSAGENTS
- FREE FAMILY TICKET TO HAVENSTREET STEAM RAILWAY

..... AND DONATIONS ARE STILL COMING IN!!!!



CALLING ALL SHOWDOWN SEEKERS!

# COWBOYS VS DINOSAURS

27th May - 3rd June

Keep the kids happy with an action packed day this half term

Pre-book & SAVE! Upgrade to an FVP & enjoy a whole season of FUN!

TEAM DINOSAURS

TEAM COWBOYS

TWO EPIC TEAMS - WHICH WILL YOU CHOOSE?

**BLACKGANG CHINE**  
Land of Imagination

Book now at [blackgangchine.com](http://blackgangchine.com)



THE ULTIMATE FAMILY FESTIVAL!

# BALLOON FESTIVAL

ISLE OF WIGHT

27TH-29TH MAY

Gather the family together for the ultimate May half-term!

Pre-book & SAVE! Upgrade to a Joint Park Fvp to experience both parks all season long!

Live Music  
Street Entertainment  
Family Activities  
Night Glow  
Spectacular

THIS EVENT IS INCLUDED IN OUR 2023 FVPS!

**ROBIN HILL**

Book now at [robin-hill.com](http://robin-hill.com)



Our Place

West Wight Sports & Community Centre

## GET ACTIVE

**FREE activities for adults of all ages and abilities**

Try something new  
Get active  
Meet new people  
Different activities each week:  
soft archery, table tennis, team games, fitness classes, and more! Just turn up!

Wednesday 10:30am - 11:30am

West Wight Sports and Community Centre  
More info: 01983 752 168  
[help@westwight.org.uk](mailto:help@westwight.org.uk)

Supported by

**HiWCF**  
LOCAL GIVING FOR LOCAL NEEDS






## WHAT'S ON WEST WIGHT

### COMMUNITY ACTIVITIES

Find out what's on in your local area by picking up your copy at:

- West Wight Sports and Community Centre
- Our Place community sessions
- Freshwater Parish Council office
- Totland Parish Council office
- Yarmouth CE Primary School
- Shalfleet CE Primary School
- St Saviour's RC Primary School
- Freshwater Library
- Freshwater Foodbank at Colwell Baptist Church

Download at:  
[westwight.org.uk/community-connector](http://westwight.org.uk/community-connector)




**COMMUNITY CONNECTOR WEST WIGHT**



West Wight Sports & Community Centre | LW GHS | Community Action Isle of Wight | foodbank | Our Place





**TAPNELL FARM PARK** **SUMMER**

# Season Passes

**JUST £38 PER PERSON!**

Valid from 25th March - 5th November 2023

**ALL WEATHER FUN**  
Indoor and Outdoor Play

**Unlimited FREE entry**  
Transferable adult season pass when accompanying a child season pass holder  
(\*see website for full T&C's)

**NEW FOR 2023!**  
Falconry Shows, Maize Maze & Outdoor Zip Wires!

**ALL WEATHER FUN FOR JUST OVER £15 PER MONTH!**

**Children under 2 are free!**

**Fun monthly events!**

Full details & to buy online - [www.tapnellfarm.com/play](http://www.tapnellfarm.com/play)



**TAPNELL FARM PARK** **SUMMER**

27th May - 3rd June

ONCE UPON A TIME AT TAPNELL...

# FAIRY TALE WEEK

Daily **FALCONRY** Flying Displays

Family Hobby Horse **Jousting**

**Archery** with Robin Hood!

Animal Activities with The 1 Little Pigs & Billy Goats Gruff!

There's even a fortune telling cockroach!

Plus... Magic Shows, Workshops run by the Fairy Godmother, Joke Competition & more!

More details and book online at [tapnellfarm.com/events](http://tapnellfarm.com/events)



**SWAY Corf Camp Weekend, Friday, 9th – Sunday, 11th June**  
SWAY young people and their families are invited to the following activities in June at Corf Scout Campsite, Corf Road, Shaftesbury, PO30 4NT.

**Saturday 10th June: Activities Day: Open to Families and SWAY Young People** (camping o/night available)  
10.30 am Arrival and signing in  
- Team Building Games/ Challenges for the young people School Year 6 and above.  
- Self help activities such as Volley Ball and Creative table for all ages.  
1:30pm-3:30pm Lunch: BBQ or bring own packed lunch/picnic  
5pm-8pm Kayaking Groups, Please wear suitable clothing and footwear plus a change of clothes). NB: Changing rooms are available.  
8.30pm Home time for non-campers  
8.45pm Campfire & Music & Hot chocolate  
10pm Bedtime

**Saturday, 10th June Cost: £20 per Young Person**, including all activities & BBQ lunch (only £15 for each additional sibling).

**Camping and activities on Saturday & Sunday open to young people & families: £25pp** (under 11s will need to camp with a parent/ guardian). If siblings camping only £20 for each additional sibling.

**Sunday, 11th June: All families and Young People.**  
10am Walk to Newtown Church from camp  
10.30am SWAY celebration at Newtown Church. Drinks provided after Church  
12 noon Return back to camp for pack up.  
12:30pm Pick up/finish

**Cost summary:**  
To Camp (incl. activities) £25 (£20 for each additional sibling)

**Saturday Activity Day** (no camping) £20 (£15 for each additional sibling))

**BBQ only (incl. activities)** per person £5

Please pay by BACs in advance by internet banking using the reference below and let us know when payment has been made:

Reference: Surname Corf  
South Wight Area Youth Partnership bank account details:  
HSBC, sort code 40-34-26,  
Account 81783211

(We are asking that Adult visitors make a £2.50 voluntary donation towards Corf Camp facilities)

Please don't let cost be a difficulty, any questions please email/text Catherine or contact Andy on 07552236067.

Please book by emailing Catherine at [swayoffice1@gmail.com](mailto:swayoffice1@gmail.com) for a camping kit list and more joining details.

Let us know if you intend to join in with the family events and to give numbers for the BBQ on the Saturday by emailing Catherine.

It will be a great opportunity for young people and families to meet with friends and have fun.

Looking forward to hearing from you.



**TAPNELL FARM PARK** **SUMMER**

# Season Passes

**JUST £38 PER PERSON!**

Valid from 25th March - 5th November 2023

**ALL WEATHER FUN**  
Indoor and Outdoor Play

**Unlimited FREE entry**  
Transferable adult season pass when accompanying a child season pass holder  
(\*see website for full T&C's)

**NEW FOR 2023!**  
Falconry Shows, Maize Maze & Outdoor Zip Wires!

**ALL WEATHER FUN FOR JUST OVER £15 PER MONTH!**

**Children under 2 are free!**

**Fun monthly events!**

Full details & to buy online - [www.tapnellfarm.com/play](http://www.tapnellfarm.com/play)



# JOURNEY TO THE STARS

**QUAY ARTS CENTRE**  
28<sup>TH</sup> MAY  
DOORS 1.45PM - ONSTAGE 2.00PM  
TICKETS £8 EACH  
£10 FAMILY OF FOUR

**SQUASHBOX theatre**

BOX OFFICE: 01983 822490 | [WWW.QUAYARTS.ORG](http://WWW.QUAYARTS.ORG)

Quay Arts are supported by:

Follow us on:

[twitter.com/quayarts](https://twitter.com/quayarts) [facebook.com/QuayArtsCentre/](https://facebook.com/QuayArtsCentre/)

\*SQUASHBOX APPLIES

QUAY ARTS PRESS RELEASE 09/05/2023



Squashbox Theatre presents...

## Journey to the Stars

Sunday 28<sup>th</sup> May 2023 @ Quay Arts Centre, Newport  
Show starts 2pm (50 mins running time with no interval)  
Tickets: £8 | £30 Family of Four

Journey to the Stars! is a marvellous blend of puppetry, storytelling, live music, and comedy, sprinkled with astounding science and astronomy facts, and all contained within an accessible, funny, and unique family show. Join Squashbox Theatre at Quay Arts on Sunday 28<sup>th</sup> May, for a spectacular theatre performance, suitable for all the family.

Since the dawn of time, human beings have gazed up at the night sky and wondered... What's up there? How far does it go? Does it ever end? Well, wonder no longer! All these questions and more will be answered in 'Journey to the Stars'!

Let Squashbox Theatre be your guide on a journey through the cosmos: across the solar system, past twinkling stars, towards distant galaxies... to the edge of space and time itself! Using only silly puppets, ridiculous and unnecessary props, ludicrous wigs and assorted fruits and vegetables, Squashbox Theatre will reveal the secrets of the universe!

To Book tickets please go to <http://www.quayarts.org> or call Box Office on 01983 822490.



For further information please contact Tayla Smith, Marketing Co-ordinator [marketing@quayarts.org](mailto:marketing@quayarts.org) T: 01983 822490

Quay Arts, Sea Street, Newport Harbour, Isle of Wight, PO33 5BD | Quay Arts Registered Charity No. 272007 (Steve Ross Foundation for the Arts)

## Introduction to Junior Golf

We are actively seeking boys and girls under the age of 18 to join our junior section and as a special introductory offer we are offering the following benefits:

- Free Saturday morning tuition by our PGA golf professional.
- Starting date will be Sat 24<sup>th</sup> June 10.00am 2023
- Free Junior membership to those who attend the classes.
- Junior golf equipment will be provided.
- Discounted playing rates for parents.

Golf is a healthy outdoor activity and you will have the opportunity to play on one of the most picturesque settings in the country.

Pre-registration will be required, so if you wish to participate, please contact the club secretary on:

Tel.01983 755295  
[Freshwaterbaygolfclub.co.uk](http://Freshwaterbaygolfclub.co.uk)

## DON'T MISS

# SOMEWHEN STORYTELLING FESTIVAL

**3rd & 4th June 2023**  
Isle of Wight Steam Railway,  
Havenstreet

MAGICAL STORYTELLING SHOWS  
WOODLAND STORY WALKS  
COSTUMED CHARACTER STORIES  
SHADOW THEATRE  
STORYTELLING CHALLENGE

(Also bring your grown up as there will be shows just for them!)

**CHILDREN'S TICKETS JUST £10 A DAY OR £15 FOR THE WEEKEND.**

WEEKEND AND FAMILY TICKETS ALSO AVAILABLE. TICKETS CAN BE BOUGHT ONLINE OR ON THE DAY.

**WWW.SOMEWHEN.ORG.UK**

ISLE OF WIGHT STEAM RAILWAY  
Supported by the Arts Council ENGLAND



# Whitsun

29 May-4 June, 2023

# Holiday

# Activities

**Mermaids · Diving · Snorkelling**

**Raft Racing · Climbing**

**Swimming Lessons · Fun Hours**

**Open Swim Sessions**

**Sports Club**

**Mermaids**



**For more info pick up a leaflet from reception**

**West Wight**  
Sports & Community Centre

Freshwater, Isle of Wight, PO40 9XH

Tel: (01983) 752168  
[www.westwight.org.uk](http://www.westwight.org.uk)  
E-mail: [info@westwight.org.uk](mailto:info@westwight.org.uk)

Reg. Charity No. 273334    



# Whitsun Holiday Activities

Swimming lessons 4 day week £29.70

Tuesday 30 May-Friday 2 June

29 May-4 June, 2023

## Learner Pool

0900-0930 – Non Swimmer Happy to go in the water in armbands.  
0930-1000 – Beginner Swimmer Ready to swim without armbands.

1000-1030 – 5-10m Water confident, can swim 5-10m on front and back.

## Main Pool

0900-0930 – 10-50m Can swim 10-50m on front and back and happy to put face in water.  
0930-1000 – 50m+ Can swim min. 50m+ using good front crawl, back crawl & breaststroke.

**Tuesday Snorkelling** – 1000-1100 – £5.50. Must be able to swim at least 25m and be happy under the water.

**Wednesday Raft Racing** – 1000-1100 – 6yrs + – £5.50 – Fun and games in teams racing on our specially built rafts. Must be able to swim at least 50m.

**Climbing** – 1300-1400 & 1400-1500 – 7-12years – £15. A fun session suitable for all abilities. Waiver form will need to be completed.

**Thursday Sports Club** – 0930-1030 – 7-11 years – £5.50 A fun session with a range of sports, games and activities; including an introduction to archery using soft arrows.

**Diving** – 1000-1100 – £8 Must be able to swim at least 25m, be happy underwater and be able to perform a head first entry into the pool.

**Climbing** – 1500-1600 & 1600-1700 – 7-12 years – £15

A fun session suitable for all abilities.  
Waiver form will need to be completed.

## Friday

### Mermaids Main Pool

1000-1030 – £5.50. Must be able to swim 25m+ and happy under the water.

### Mermaids Small Pool

1030-1100 – £5.50. Must be able to swim 10m+ and happy under the water.

## Open Swim Sessions

No lanes, diving boards in use – great for a family swim session.

Adults £5.50, Children/under 20s £3.

Monday 29 May 1500-1600

Tuesday 30 May-Friday 2 June 1400-1500 and 1500-1600

Saturday 3 and Sunday 4 June 1400-1500

## Fun Hours

Fun and floats in our pool. Under 8's MUST be accompanied in the water. £4.

Tuesday 30 May-Friday 2 June 1000-1200

Saturday 3 and Sunday 4 June 1000-1100

Tuesday 30 May 1900-2000



Anyone who needs assistance with funding their child's activities please email

[ian.mcandrew@westwight.org.uk](mailto:ian.mcandrew@westwight.org.uk)

or go to our website to find out how to apply, as there is financial support available.



All activities must be booked in advance including fun hours and swimming.

All under 8's must be accompanied by an adult on the premises during all activities.

Swimming pool – book online – to book online you need to register with us on 752168 and we will give you a pin.

### Booking terms and conditions

#### ACTIVITIES

- Payment must be made in full at time of booking
- Users and members are asked to notify us as soon as possible if attendance at a booked activity is not possible
- Bookings can be cancelled at any time. No refund will be given for cancellations less than 24 hours before a booked activity
- Members who do not attend booked sessions will be required to pay the cost of a non-member at that session
- We reserve the right to refuse further bookings from anyone who repeatedly does not honour their booking or the terms and conditions
- Bookings can be made 9 days ahead.
- Children under 8 must be accompanied by an adult on the premises during all activities
- Minimum age for swimming lessons is 4 years.

#### ONLINE BOOKINGS – CHILDREN'S ACTIVITIES

- Only Fun Hour and Open Swim can be booked online
- Users/members must be registered, with a valid email address and issued with a unique PIN in order to be able to access the online booking portal. Please telephone and ask for your PIN and details

- We reserve the right to suspend an online booking account at any time
- Bookings can be made online up to 2 hours before the time of the booking. After that time bookings should be made over the phone
- Bookings can be cancelled online no later than 24 hours before the booking. After that time bookings must be cancelled over the phone
- Payments cannot be refunded online. Please call us to process your refund

#### SWIMMING COURSES

- In the event of a cancellation of a swimming course by a customer, full fee will be retained unless the place can be re-sold, in which case a refund of 80% of the fees or pro-rata if the course has commenced
- In the event of cancellation by us 100% refund will be issued or pro-rata if the course has commenced

We accept the following payment cards:



Whitsun 29 May-4 June, 2023

# Holiday Activities

Mermaids • Diving • Snorkelling  
Raft Racing • Climbing

Swimming Lessons • Fun Hours  
Open Swim Sessions

Sports Club  
Mermaids



West Wight  
Sports & Community Centre

Freshwater, Isle of Wight, PO40 9XH

Tel: (01983) 752168

[www.westwight.org.uk](http://www.westwight.org.uk)

E-mail: [info@westwight.org.uk](mailto:info@westwight.org.uk)

Reg. Charity No. 27234

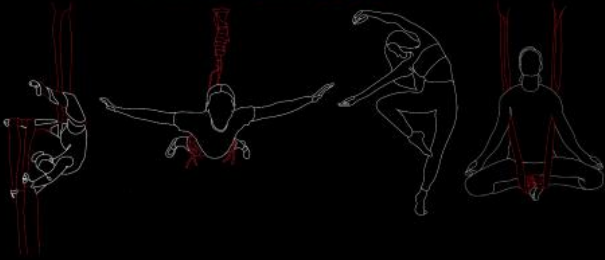




# ARTS

JAYDENE-LEE

DANCE, AERIAL, BUNGEE FIT  
AND CIRCUS



Contemporary Dance • Circus • Aerial Silks •  
Aerial Yoga • Bungee Fit!

*(Classes are based on age/ability).*

*Classes for all ages • Workshops • Performance opportunities •  
Exams • Birthday Parties • Hen do's • Private Bookings • 1-1's •  
Weddings/Events & much more!*

*To book/for more information please contact:*

info@jaydenearts.com | 07715450640 | https://bookwhen.com/jaydenearts

FACEBOOK @jaydenearts1 | INSTAGRAM @jaydene.lee.arts

## We Provide Support for LGBTQ+ young people across Hampshire & Isle of Wight

Est 1993  
**BREAKOUT  
YOUTH**

We cover the following areas:

Southampton	New Milton	Andover	Hart & Rushmoor
Isle of Wight	Marchwood	Eastleigh	East Hants
New Forest	Basingstoke	Romsey	North Hants

**SUPPORT • RESPECT • DIVERSITY**

Find out more...

☎ 023 80 224 224

✉ hello@breakoutyouth.org.uk

🌐 www.breakoutyouth.org.uk

breakout\_youth\_uk @

@breakout\_youth

Breakout Youth Project

Supported by



Registered Charity No. 1180296 | Company Limited by Guarantee No. 11237821 | Registered Office: 36 The Avenue, Southampton, SO17 1SN



Sun Drum Presents:

# CIRCUS SKILLS CLUB

EVERY MONDAY  
AT 4.30PM-5.30PM

ADDRESS: ST MARGARETS HALL  
LOWTHERVILLE ROAD, VENTNOR,  
PO38 1BJ

MOBILE: 07890463771

Made with PosterMyWall.com

ALL AGES  
WELCOME  
£5 per child  
+ £1 per sibling  
concessions available

CONTACT:  
SUNDRUMFOREST@GMAIL.COM

## Vintage Scoops

ice  
cream



We'll be at:

BRIGHSTONE  
METHODIST  
CHURCH  
WEDNESDAYS  
2.30-4.30pm

'Betty' is coming to town!!



Run for Islanders affected by cancer

WESSEX CANCER TRUST

Entertainment village for a full day of fun

3K fun run through inflatables, powder paint and foam!

Video game themed

## RAINBOW RUN BUBBLE FUN 2023

SUNDAY, 25 JUNE 2023 | IW COUNTY SHOWGROUND

With live entertainment from:

**Ear Candy** **Azi** **The Bandits** Plus much more!

Get in touch at 023 8067 2200 or [fundraising@wessexcancer.org.uk](mailto:fundraising@wessexcancer.org.uk)

Wessex Cancer Trust, a charity registered in England and Wales (1102216)

Scan to sign up!



Kindly sponsored by

**wightfibre** because we care

**No Limits**  
Helping Young People Help Themselves

**NHS**  
Isle of Wight  
Clinical Commissioning Group

## Space4U

A safe haven for young people aged 11-17\* living on the Isle of Wight

\*Up to age 18 with additional needs

- Out of Hours emotional and practical support with mental health.
- Help to explore your current situation
- Learn self-management techniques
- Enable you to make positive changes

**Monday's**  
(5pm-8pm by appointment)  
East Newport Family Centre  
Furrlongs  
Newport  
PO30 2AX

**Tuesday's**  
(4pm-7pm by appointment)  
Sandown Family Centre  
98 The Fairway  
Sandown  
PO36 9EQ

(Virtual support available during Covid)

Contact us today to find out more:

02380 224 224  
07741 665182  
enquiries@nolimitshelp.org.uk



SCAN ME

[www.nolimitshelp.org.uk](http://www.nolimitshelp.org.uk)  
023 8022 4224

Sandown Soccer - Isle of Wight

# SANDOWN SOCCER

at The Bay CE Secondary

FOR CHILDREN AGED 4-11

30th May - 2nd June  
4 DAYS OF FOOTBALL FUN!

Mini-Soccer camp for children. Aiming to provide a fun and enjoyable environment whilst developing and improving players footballing ability!

10AM - 3PM £12 a day

- ★ FA Qualified coaches with enhanced DBS and up to date first aid and safeguarding training.
- ★ Fun football games to develop agility, balance, coordination and speed!
- ★ Win medals by becoming Penalty, Keepy-uppy, Crossbar or Speed Champion as well as our Best Attitude, Most Improved and Future Star awards!
- ★ Take part in the Sandown Soccer World Cup where one team will be crowned WORLD CHAMPIONS!!!

SANDOWN SOCCER

Player of the day!

PLAYER OF THE DAY WINS A FREE SANDOWN SOCCER T-SHIRT!!!

5 hours of fun EVERY day!  
10am - 3pm  
Inclusive football for ALL abilities!

Only £12 a day!

Find us on Facebook Sandown Soccer - Isle of Wight

Have questions or would like more information?  
Contact Lewis (Mr Mitchell)  
[sandownsoccer@yahoo.com](mailto:sandownsoccer@yahoo.com)  
07594 389531

**SANDOWN SOCCER**

Children are welcome to come for one day or for ALL the days!

Attend at least 3 out of the 4 days during the week and win a medal for all of your hard work!

To book a place text your child's name, school year, dates and your name to 07594 389531



# GIRLS ONLY FOOTBALL



## INTRODUCING OUR SANDOWN SOCCER GIRLS ONLY FOOTBALL SESSION!

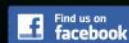
### OUR FUN SESSION WILL BE:

WHEN: Every Wednesday. 5pm to 6pm

WHERE: The Bay CE Primary School, Sandown

COST: £4 for the 1 hour session

To Book: Text your child's name, school, year group and parent name to **07594 389531**



Sandown Soccer - Isle of Wight



## IS YOUR CHILD TOO YOUNG TO JOIN A TEAM?

## DOES YOUR CHILD WANT TO BUILD THEIR CONFIDENCE IN A SPORTING ENVIRONMENT?

## DOES YOUR CHILD WANT TO PLAY FOOTBALL BUT NOT IN A TEAM YET?

IF YOU'VE ANSWERED YES TO ANY OF THOSE QUESTIONS, WE'VE GOT THE PERFECT SOLUTION!

WE PROVIDE A SAFE, ENJOYABLE ENVIRONMENT WHERE CHILDREN CAN HAVE FUN WHILST IMPROVING THEIR FOOTBALL SKILLS.

### OURS AIMS ARE:

- TO ALLOW CHILDREN TO HAVE FUN THROUGH FOOTBALL
- TO IMPROVE CONFIDENCE AND SOCIAL SKILLS.
- TO LEARN AND IMPROVE BASIC FOOTBALL SKILLS: CONTROL, PASSING, DRIBBLING.
- TO DEVELOP AGILITY, BALANCE, CO-ORDINATION, SPEED (ABC'S).

Our fully FA qualified coaches have up to date First Aid training and are DBS checked. Each session will be packed full of fun games played in teams, and as individuals, to help children build friendships as well as independence.

To Book: Text your child's name, school, year group and parent name to **07594 389531**

13/04/2018 06:21 C1

## FAMILY FUN

# CLAY DAYS

### AT NEWPORT ROMAN VILLA

Make a face pot

**ONLY £1\***  
No need to book, just turn up and explore.

Half-term activity  
♦ 10am to 2.30pm  
♦ Wednesday 31 May  
♦ Friday 2 June

\*£1 per person. Includes admission and all activities.  
• COVID-19 precautions in place.  
• If the activity room is full we will provide clay for you to create your masterpiece at home.  
• Card payments limited; allow extra time if you wish to pay this way.

NEWPORT ROMAN VILLA

01983 529720/823433  
[iow.gov.uk/museums](http://iow.gov.uk/museums)  
Cypress Road, Newport, IW, PO30 1HA

Respect Protect Enjoy Events organised by the Isle of Wight Heritage Service

You may also like  
MUSEUM ISLAND HISTORY  
[iow.gov.uk/museums](http://iow.gov.uk/museums)



## Libraries are *here to help*

Jo and Louise from the Isle of Wight Library service will be at Our Place on Monday 22 May to chat with you about the great services and activities libraries offer, including:

- ✓ Books
- ✓ E-books and e-audio books
- ✓ Magazines and newspapers
- ✓ Free computer and Internet access
- ✓ Regular groups and activities for adults and children
- ✓ Local information and much more!

Come along and try out some of the library apps and online services. You will be able to join the library on the day!



# MINI MOVERS!

HOPPERS  
BEAN BAGS  
HOOPS  
SOFT PLAY  
BALL PIT  
BALLS

Wednesdays  
09:15 - 10:15

Soft play and toys for children aged 0 - 4 years,  
£4 per child, additional siblings £2 each  
Booking advised



**DYNAMOS CRICKET**

**This is our game.**

[dynamoscricquet.co.uk](https://dynamoscricquet.co.uk)

**Join us at:**  
Cowes Cricket Club (COW Community Club)

**Session dates:**  
Friday evenings - First Session 28th April, Last Session 16th June

**Session timings:**  
5.15pm-6.15pm

**Contact:**  
For more info, email Ash Goldsmith - [ash@cowescricketclub.co.uk](mailto:ash@cowescricketclub.co.uk)

Starting on Friday 28th April, Mr Goldsmith will be running eight Dynamos Cricket sessions for children aged 8-11 at Cowes Cricket Club.

The sessions are open to all children aged 8-11 (not just from Brighstone) and will run between 5.15pm and 6.15pm each Friday evening, with the final session taking place on Friday 16th June.

The cost of the eight-week programme is just £20 - to sign up your child, please click on the following link - <https://ecb.clubspark.uk/Dynamos/Course/3967cab0-ff75-4535-94ed-8c5393c65e6e>. For signing up, your child will receive a personalised playing shirt, Topps Cricket Attax Cards and access to the Dynamos App.

Any children that sign up could end up as part of the Cowes U11 hardball squad, whilst any girls that sign up will be part of the Cowes U11 Girls Dynamos squad for the 2023 season.

**ALL STARS CRICKET**

**Newport IOW Cricket Club**  
Sun 04 Jun - Sun 23 Jul 2023  
09:30 - 10:15

[https://ecb.clubspark.uk/AllStars/Course/a4c8988d-ce72-437d-a8bd-888bd84ff51c?fbclid=IwAR3vYJ-NdKPleQK3CxmUPaD8u0NCyA-Q4m1CToJMc3LFLN8\\_Ejq7QEsj0KmU](https://ecb.clubspark.uk/AllStars/Course/a4c8988d-ce72-437d-a8bd-888bd84ff51c?fbclid=IwAR3vYJ-NdKPleQK3CxmUPaD8u0NCyA-Q4m1CToJMc3LFLN8_Ejq7QEsj0KmU)

<https://ecb.clubspark.uk/Dynamos/Course/6b41c358-8843-4ea4-996c-ee8b87aec96f?fbclid=IwAR0liUvF8mcUprEC->

**Join us for All Stars at Ventnor CC**

Steephill Rd, Ventnor, PO38 1UF



Open to 5-11 year olds

Tuesdays 4 - 4.45pm

Starting Tuesday 23rd May

Phone Ruth on 07917306984 for details or sign up online.

**SCOOPS**  
**WHEATSHEAF LANE**  
**YARMOUTH**  
**AFTER SCHOOL**  
**ICE CREAM**  
**2.50**



**PLAY**  
**JUNIOR**  
**RUGBY**

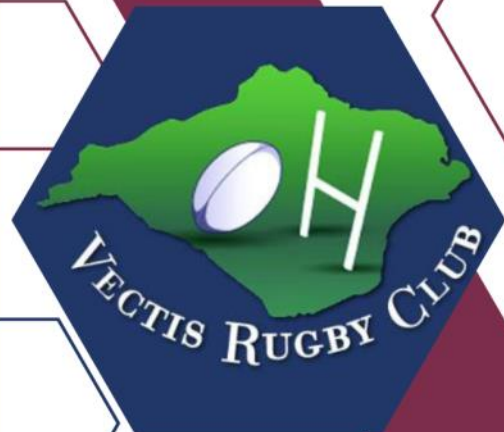
Vectis Rugby club have spaces open in all age groups from U5 to U12

*Every Sunday at IWRFC in Wootton at 10am.*

First two session are free  
Email for more information

Email: [vectisrfccoaching@gmail.com](mailto:vectisrfccoaching@gmail.com)

[www.vectisrugby.co.uk](http://www.vectisrugby.co.uk)



Sessions are all delivered by experienced coaches with first aid qualifications and DBS Checks.



## **CHILDREN'S SHOW SCHEDULE 2023**

---

### **SPRING SHOW**

**Saturday 1st April**

Wilberforce Hall, Main Road, Brighstone  
1.30pm to 4.00pm Presentations at 4.00pm

---

### **125th BHS MARQUEE IN NEW SUMMER SHOW**

**Saturday 15th July**

Recreation Field, New Road, Brighstone  
Marquee opens 1.30pm Presentations at 4.00pm

---

### **AUTUMN SHOW**

**Saturday 7th October**

Wilberforce Hall, Main Road, Brighstone  
1.30pm to 4.00pm Presentations at 4.00pm

**SPRING SHOW**

Please state your age on the entry form, then it will be taken into consideration.

- 72. A Painting or Drawing for King Charles's Coronation.
- 73. A driftwood model of a dinosaur.
- 74. 4 Fairy Cakes, made and decorated.
- 75. Floral art – An Easter Posy.
- 76. 4 Decorated Rich Tea Biscuits, Coronation Themed (judged on decoration only).
- 77. Handwriting:

God save our gracious King!  
 Long live our noble King!  
 God save the King!  
 Send him victorious,  
 Happy and glorious,  
 Long to reign over us,  
 God save the King.

**AUTUMN SHOW**

Please state your age on the entry form, then it will be taken into consideration.

- 118. A Christmas Card.
- 119. 4 Christmas or Halloween cup cakes made and decorated.
- 120. A driftwood reindeer.
- 121. My favourite pot plant, grown by entrant.
- 122. An Autumn painting or drawing A4 max.
- 123. A model made from Lego, no bigger than 30cm x 40cm
- 124. Handwriting:

Rain, rain go away,  
 Come again another day.  
 Rain, rain go away,  
 Little Johnny wants to play.

**SUMMER SHOW**

**CHILDREN'S CLASSES**

Prize money for children's classes: 1<sup>st</sup> - £1.50, 2<sup>nd</sup> - £1, 3<sup>rd</sup> - 50p. Your age must be displayed clearly, then it will be taken into consideration.

**Classes 156 and 163 must be arranged by the exhibitor on site without assistance.**

**For ages 9 and under:**

- 151. Something new from something old.
- 152. My pet - a painting/drawing A4 max.
- 153. My favourite "snapshot" (must be taken by entrant).
- 154. A creature made from a vegetable
- 155. A creature made from driftwood and shells.
- 156. Garden flowers in a teapot.
- 157. A miniature living garden (in a bowl or pot).
- 158. 4 decorated biscuits (judged on decoration only).
- 159. 4 pieces of flapjack, any variety.

**For ages 10 to 16**

- 160. A miniature scarecrow – maximum size 30 cm.
- 161. Still Life – a drawing or sketch.
- 162. My favourite "snapshot" (must be taken by entrant).
- 163. A miniature herb garden (in a bowl or pot).
- 164. A miniature building made from driftwood and shells.
- 165. A carrot cake.
- 166. 4 decorated fairy cakes.

**For all ages up to 16**

- 167. New class for 2023 – Grow a squash any variety.
- 168. Handwriting:  
 Incy, wincy spider climbed up the spout,  
 Down came the rain and washed the spider out,  
 Out came the sun and dried up all the rain,  
 And incy, wincy spider climbed up the spout again.

**CHILDREN'S ENTRY FORMS (ALL ENTRIES ARE FREE)**

**AUTUMN SHOW 2023**

Entry forms must reach the Show Secretary **no later than Wednesday prior to the show**. Please post your entry in the box at The Village Shop, Brighstone or hand to the Show Secretary at Bluebells, North Street, Brighstone.

NAME (BLOCK CAPITALS) \_\_\_\_\_ AGE \_\_\_\_\_

ADDRESS \_\_\_\_\_

PHONE NUMBER \_\_\_\_\_

Children's Classes

Please circle: 118 119 120 121 122 123 124

Number of entries \_\_\_\_\_

✂️\*\*\*\*\*

**SUMMER SHOW 2023**

Entry forms must reach the Show Secretary **no later than Wednesday prior to the show**. Please post your entry in the box at The Village Shop, Brighstone or hand to the Show Secretary at Bluebells, North Street, Brighstone.

NAME (BLOCK CAPITALS) \_\_\_\_\_ AGE \_\_\_\_\_

ADDRESS \_\_\_\_\_

PHONE NUMBER \_\_\_\_\_

Children's Classes

Please circle: 151 152 153 154 155 156 157 158 159

160 161 162 163 164 165 166 167 168

Number of entries \_\_\_\_\_

✂️\*\*\*\*\*

**SPRING SHOW 2023**

Entry forms must reach the Show Secretary **no later than Wednesday prior to the show**. Please post your entry in the box at The Village Shop, Brighstone or hand to the Show Secretary at Bluebells, North Street, Brighstone.

NAME (BLOCK CAPITALS) \_\_\_\_\_ AGE \_\_\_\_\_

ADDRESS \_\_\_\_\_

PHONE NUMBER \_\_\_\_\_

Children's Classes

Please circle: 72 73 74 75 76 77

Number of entries \_\_\_\_\_





## What is the Living Well & Early Help Service?

We are focussed on identifying and providing support for people before they reach crisis and working with communities to build capacity to provide that support

Working in Partnership to reach all communities of the Isle of Wight



Pan Together



West of Wight Sports & Community Centre

FOOTBALL 4 ALL PROJECT

We focus on the individual - on their strengths, passions and capabilities - building on their existing support networks, family and friends within their community



LIVING WELL & EARLY HELP 5 KEY PRINCIPLES

- 1 Community
- 2 Resilience
- 3 Relationships
- 4 Person Centred
- 5 Partnership



ASPIRE WOODWORK GROUP MAKING BAT BOXES



We will support people to look for practical solutions wherever possible and focus on what the person can do for themselves using their skills and experience rather than automatically looking for a service response.



Pan Together



West of Wight Sports & Community Centre



CRAFTERNOON SESSION

At the community level, the service will strengthen partnerships between local organisations involved in community wellbeing, including parish and town councils, local community organisations and Island-wide organisations (statutory and voluntary) that operate at local levels.

The aim is to establish semi-autonomous community 'hubs', similar to those already existing in areas like Ryde, West Wight, Ventnor and Pan, throughout the Island. The nature of the hubs will vary, depending on the needs and resources of each area.

EVERYONE HAS THEIR OWN STRENGTHS, PASSIONS AND CAPABILITIES

## BUILDING STRONG COMMUNITIES

We promote and encourage connections, developments and contributions by individuals and the community. By spending time identifying the strengths, passions and capabilities of individuals, services and places we support communities to help themselves and create local solutions.

Pan Together providing Christmas Lunch



Ventnor Community Shed

Stepping Stones Homelessness prevention program



Our Place Mindfulness Coloring

### INDIVIDUALS - EVERYONE HAS STRENGTHS, PASSIONS & CAPABILITIES.

Everyone within our communities has their own skills, knowledge and passions. Living Well & Early Help identifies, encourages and nurtures individuals to utilise them. Deficit approach define communities and individuals in negative terms. An Asset approach accentuates positive capability to identify problems and activate solutions.

### SERVICES - PEOPLE ORGANISED AROUND ASSETS.

Services are generally professionals or paid services who are structurally organised. They include government agencies and private business, as well as schools, etc. They can all be valuable resources. The assets of these institutions help the community capture valuable resources and establish a sense of civic responsibility.

### PLACE - PEOPLE LIVE WHERE THEY LIVE FOR A REASON.

Land, buildings, heritage, public and green spaces are all examples of assets of the community. Individuals tend to be in a specific place for a specific reason. The people living in a community are most likely to know what its strengths are and how to utilise them.

### CONNECTION - PEOPLE SUPPORTING PEOPLE.

Small informal groups of people, such as clubs, groups and common interest activities are critical to the delivery of the Living Well and Early Help Service. They don't need complicated processes. They are just coming together around a common interest of their individual choice.

### VISIBILITY - BEING PART OF THE COMMUNITY.

The Living Well & Early Help workers are based within the community working in agile ways within defined localities finding spaces within community hubs, libraries, cafes etc. People should be able to approach workers individually as well as being referred in by any person or service. The Living Well & Early Help service supports people to develop their own solutions and ways of achieving their best possible lives, drawing on family and community resources, before considering commissioned or statutory services. Living Well and Early Help workers invest time in building relationships and understanding what a person's idea of their best life is. It also helps people to develop and build their own capacity and connections, so that they can stay strong and independent.

### DEVELOPMENT - INDIVIDUALS CONNECT INTO A COMMUNITY.

Living Well and Early Help recognises that the exchange between people sharing their passion, gifts, skills and assets creates connections, and these connections are a vital asset to the community. It takes time to find out about individuals; this is normally done through building relationships, person by person. The social relationships, networks and trust form the social capital of a community. The Living Well and Early Help service knows the value of these assets and the importance of building relationships to increase the social capital within each unique community.

WAVES OF WELLNESS - SUICIDE PREVENTION PROJECT



reception@lweh.org.uk 01983 240732



### Tired Of Swimming Lengths?

Underwater Hockey is a great way to stay fit and still enjoy the pool. No two games will ever be the same, so why not try something different? We promise you won't get bored!



### Junior Underwater Hockey

There are many junior Underwater Hockey teams around the country. It's a great way for children to enjoy the game and get some exercise at the same time.

Underwater Hockey is a team sport so there is a great opportunity for children to make some friends along the way.

As long as you are a confident swimmer, you should be able to play Underwater Hockey.

**Many clubs have a free taster session!  
Contact your local club to find out.**

### How To Get Involved

There are over 100 teams across Great Britain so finding your local team shouldn't be too difficult! There are details below to show you your local team contact.

There are details on our website as well [gbuwh.co.uk](http://gbuwh.co.uk)

Or you can find us on social media, feel free to send us a message, and we can help you find a team.



You can find details for your local club here:



Photo Credits:  
Chris Alwin, Vicki VanDer Westhuizen, Rislanova, Gabriel Holguin,  
Australia UWH, Canada UWH & Spain UWH

# Underwater Hockey ( Octopush )



Great Britain Underwater Hockey



@gbuwh



### What Is Underwater Hockey?

Underwater Hockey is a team game played on the bottom of the swimming pool!

There are two teams competing to get a small weighted puck into their opponents' goal. The game is played exclusively on the bottom of the pool so players need to hold their breath whilst playing.

Team work is so important in Underwater Hockey, each team has 6 players and 4 rolling substitutes.

Players use a small stick to move the puck. This stick is the only way a player can move the puck.

### What Equipment Do You Need?

Players wear a mask, snorkel, fins, water polo hat, and glove. Fins allow players to swim much faster meaning the game can move extremely quickly even underwater.

Don't worry though if you want to give Underwater Hockey a try, many clubs have equipment they can lend out to new players.

### Who Can Play?

Underwater Hockey can be played by almost any age of player! Junior clubs tend to welcome players above the age of 8 years old. The only real requirement for Underwater Hockey is that you can swim!

**Many clubs also offer free taster sessions.**

### Team GB Underwater Hockey

Underwater Hockey was founded in Great Britain, and the British teams have been to many World Championships over the years.

There are currently 4 different categories, which are then split again into male and female teams. Under 19s, Under 24s, Elite, and Masters.

Great Britain has an amazing history representing their country around the world. With some players having multiple medals to their name.

Underwater Hockey is played around the world, with over 40 countries across 6 continents playing the sport.