

The Buzz



21st April 2023



Learning and Achieving Through Love,
Courage and Respect

Dear parents, carers and children,

Welcome to the summer term! I hope you all had a lovely Easter holiday, and managed to find some time to get out and about in the lovely countryside, whether here on the IOW or further afield. I hear that lots of children also took part in some exciting Easter Egg Hunts!

We have a very busy term ahead of us, and I have updated the key dates on p8 of this Buzz. The first one coming up will be our **King's Coronation Celebrations** on Friday 5th May, to which you are all warmly invited in the afternoon (let's hope for dry weather!). The children will be taking part in a street party style lunch followed by activities on the field with families. We have also invited Betty, the vintage ice cream van, along if you wish to purchase some delicious ice creams (10% of their takings will be donated to school). See the letter sent out today for further information.



Some beady-eyed children noticed our colourful brand new sign on our **Cosy Cabin**. A huge thank you to Quinn's dad, Mike, for making this for us, as well as our EARA group who discussed his designs before we chose the one you see installed. It looks great!

On Wednesday, we were honoured to welcome **Annette**, a headteacher of a school in Uganda, to our school. She visited along with Robin, who is a trustee of the charity Pearl of Africa, which helps to fund Annette's school and children's home. The children really enjoyed learning a Ugandan song and dance in our Collective Worship. Annette then visited Ivy Bee class and Honey Bee class, where they were fascinated to find out about life in Uganda and at Annette's school (which has approximately 2000 children!). Some of our children are inspired to fundraise and provide resources for the charity; watch this space. We would like to thank Annette, Robin and Rev Jackie Maw for facilitating this fascinating and thought-provoking visit. See later in this Buzz for more facts and photos.



Today, our wonderful team of Bethan, Skye and Violet, riding Jasmine and Echo, represented our school at the inter-school show jumping. They each rode two lovely clear rounds. The second round was against the clock, so everyone was doing their very best to go as quickly as possible whilst trying not to knock any fences down, fall off, or forget the course!!! Skye put in a super speedy clear round and got an individual 4th overall, while the team's combined score secured them a team 3rd place! The girls once again were a great team today, cheering for each other and supporting one another. It was a very fun and exciting day and the three are very happy and proud of how well they have done and thoroughly enjoyed the experience. Well done to the girls, and thank you to their parents/carers for supporting them (and writing this commentary).

I hope you all have a lovely weekend, and I look forward to seeing you on Monday.

With best wishes,

Mrs Lennon and the Brighstone Team



Collective Worship - Friendship

This week's Collective Worship theme is **Friendship—Sticking Together**

This week, we have been making friendship bracelets. The three pieces are plaited together, which makes the bracelet stronger. Plaiting the strands together needs time and effort, just like building a good friendship. You can have one friend, two friends or lots of friends!



Spend a few moments thinking about one of your friends. What are the things that make your friendship stronger?

Raksha Bandham



Prayer for friendship

Dear Lord Jesus,
You have shown us through the Bible that you want to be woven into our lives as our friend.
Thank you that we can talk to you at any time because You are always close to us.
Thank you for our friends – we are stronger together!
Amen



"There is a friend who sticks closer than a brother."
Proverbs 18.24



School Dinners

Children in **Year R, 1 and 2** are entitled to a 'universal' **free** school meal everyday.

Children in Years 3-6 are charged at **£2.55** per day.

Baguettes now available on Tuesdays and Thursdays instead of JPs (ham, cheese or tuna)

Week 2	Monday	Tuesday	Wednesday	Thursday	Friday
Option 1	Macaroni Cheese	Chinese chicken & Rice	Roast Gammon	Beef lasagne	Fish Fingers
Option 2	Tomato Pasta	Tomato Pasta	Tomato Pasta	Tomato Pasta	Veggie dippers
Dessert	Ice cream	Jelly	Shortbread	Flapjack	Oat cookie

Poetry Corner

Friendship is...

- Finding things to do together
- Relying on each other
- Impossible on your own
- Enjoying being together
- Never selfish
- Depending on someone else
- Sharing hopes and dreams
- Happiness and laughter
- Including others
- Precious

Which line do you think is the best way of describing friendship and why? Can you think of any other ways?



Grammar and Spelling Matters

Each week we will include a mini grammar or spelling lesson so you know what your children are learning!

Figures of speech—personification

An object or animal is given human qualities.

What is personification?

The trees **danced** in the wind.

The stars **winked** in the night sky.

The sun **smiled** happily down at us.

The grey clouds **cried** drops of rain.

Personification Examples

- The flowers begged for water.
- The house was lazy and unkempt.
- Lightning danced across the sky.
- Trees bowed to the ground.
- The carved pumpkin smiled at me.
- The vines wove their fingers together to form a braid.
- The wind whispered softly in the night.
- The sun played hide and seek with the clouds.
- The camera loved her.
- The radio sprang to life at the touch of a button.
- The bed groaned.

Can you make up some of your own?

Safeguarding

If you have a concern about a child you can call the police on 999 if you feel they are at risk of immediate harm

Contact us: safeguarding@brighstoneprimary.org.uk

Speak with our DSL Mrs Jones in the school office

You can contact the NSPCC:

Contact the NSPCC Helpline

If you have any concerns at all about a child's safety or wellbeing, don't hesitate to contact us.

Call us or email help@nspcc.org.uk

0808 800 5000

Find out more

Or call children's services 0300 300 0117

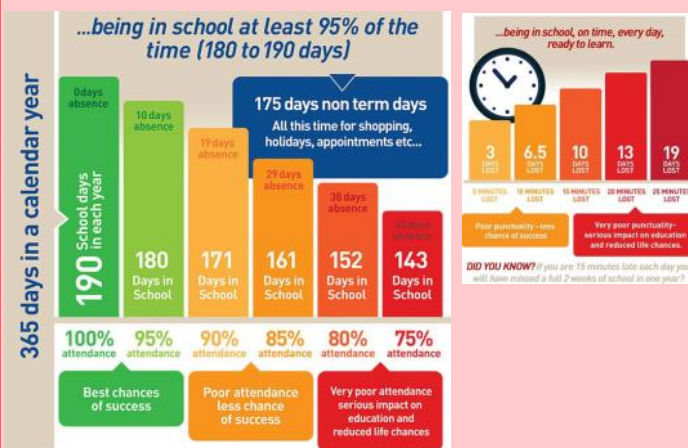
Attendance Matters!



Week Commencing 17th April
Whole School attendance target: **96.5%**

Actual Attendance: **97.19%**

Late marks this week: **5**



Golden Book

Bumble Bee	Meadow - for great spelling and using letter names beautifully! Ellie - growing in confidence. Theo F - ordering numbers up to 20 accurately. Tristan - working hard on his capacity work independently and quickly!
Honey Bee	Myles - for some beautiful language in English. Freddie H - for showing a consistent improvement in learning behaviours and attitudes in all lessons.
Ivy Bee	Nico - for wonderful improvement with his handwriting.
Bee-Haviour	William - for some insightful answers during worship and pupil conferencing.
Sports Bee	Alfie M - for always showing passion in sports participation.



Love

Courage

Respect

SEMH

Social, Emotional & Mental Health

Learn a new skill!

All classes take place at
The Learning Centre,
Westridge, Ryde, PO33 1QS.

ICT (CONTINUED)

ICDL Presentation

Level 1 and 2

6 week course › Thursday 8 June to
13 July › 9.30am to 12.30pm › Free

Safety Online

Workshop › Sunday 30 April ›
10am to 12pm › £10/£5*

Chrome Books

Workshop › Sunday 21 May ›
10am to 12pm › £10/£5*

Video Calling

Workshop › Sunday 25 June ›
10am to 12pm › £10/£5*

ART

How to Paint Better

4 week course › Wednesday 3 to 24 May ›
10am to 12.30pm › £55/£32*

Digital Art for Beginners

2 week course › Monday 15 to 22 May ›
10am to 1pm › £35/£22*

Painting in the Style of Folk/Barge Art

2 week course › Wednesday 7 to 14 June ›
10am to 1pm › £40/£25*

Drawing Still Life

Workshop › Tuesday 13 June ›
10am to 3pm › £35/£22*

Drawing with Charcoal and Chalk

Workshop › Wednesday 28 June ›
10am to 3pm › £35/£22*

Painting with Melted Wax

3 week course › Monday 3 to 17 July ›
6pm to 8pm › £40/£25*

CRAFT

Willow Woven Wall Sculpture

2 day course › Saturday 29 April and Sunday
30 April › 10am to 3pm › £60/£35*

Patchwork Landscape Picture

3 week course › Friday 12 to 26 May ›
10am to 12pm › £40/£25*

Nature Inspired Mosaic Picture

2 day course › Saturday 3 June and
Sunday 4 June › 10am to 4pm › £70/£40*

Personalised Clay Plant Pot

2 day course › Saturday 10 June and
Sunday 11 June › 10am to 1.30pm ›
£45/£28*

Punch Needle Embroidery

3 week course › Monday 12 to 26 June ›
6pm to 9pm › £60/£35*

Sachiko Clutch Bag

3 week course › Sunday 2 to 16 July ›
10am to 1pm › £55/£32*

Upcycling with Wallpaper

2 week course › Wednesday 5 to 12 July ›
6pm to 8.30pm › £38/£25*

Wire and Silk Suncatchers

3 week course › Thursday 6 to 20 July ›
10am to 1.30pm › £65/£38*

HEALTH, WELLBEING AND LANGUAGE

Conversational Holiday French

4 week course › Wednesday 3 to 24 May ›
6.30pm to 8pm › £35/£22*

Reflexology - Hand Massage

Workshop › Sunday 28 May ›
10am to 1pm › £15/£8*

CAREERS APPOINTMENTS

Do you need impartial information,
advice and guidance to enable you
to realise your potential, so that you
can confidently take the next step
into learning or employment?

If your answer is **yes**, call us to book
a **free** face to face or telephone
appointment with our careers
advisor Claire, who can tailor it
around your needs, whatever
they may be.

For more details, please contact
acl@iow.gov.uk

WORKSHOP MORNING £10/£5*

Workshop › Sunday 14 May ›
10.30am to 12.30pm

Air Dried Clay Roses

Learn how to mould and form clay into rose
petals, to create decorative roses.

Feng Shui

Understand the basic principles of Feng Shui
and use the five elements to enhance a space.

Wire Button Tree Sculpture

Create a small-scale twisted garden wire
sculptured tree, embellished with buttons,
beads and ribbons.

For more information
and to book your place
please get in touch.

 iow.gov.uk/ACLcourses

 01983 817280

 acl@iow.gov.uk

 IWCACL

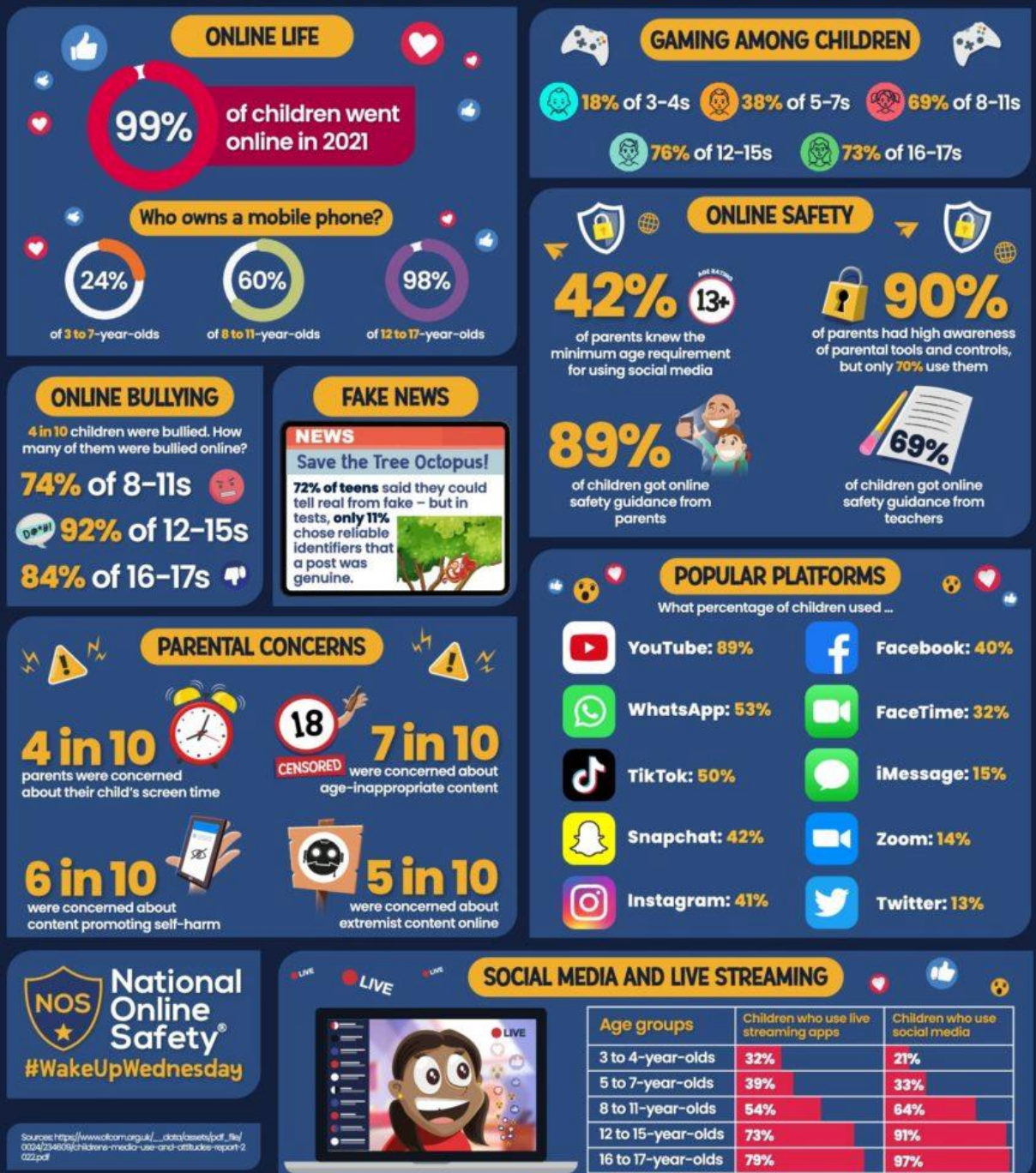
Online Safety

Children and parents: media use and attitudes report 2022

This report looks at media use, attitudes and understanding among **children** and young people aged 3-17. It also includes findings on **parents'** views about their children's media use, and how parents of children and young people aged 3-17 monitor and manage their children's use.

[Full Report](#)

What Parents & Carers Need to Know about THE OFCOM CHILDREN AND PARENTS: MEDIA USE AND ATTITUDES REPORT 2022



Class News

Visit from Annette, a headteacher in Uganda

On Wednesday, we were honoured to welcome Annette, a headteacher of a school in Uganda, to our school. She visited along with Robin, who is a trustee of the charity Pearl of Africa, which helps to fund Annette's school and children's home. The children really enjoyed learning a Ugandan song and dance in our Collective Worship.



Annette then visited Ivy Bee class and Honey Bee class, where they were fascinated to find out about life in Uganda and at Annette's school (which has approximately 2000 children!). With help from the Pearl of Africa charity and the Molly and Paul Childcare Foundation, they help to house, feed, look after and educate children from babies to late teens, and sometimes some in their early 20s. Annette loved seeing our school with its well-equipped classrooms, carpet, displays and trays for each child. She talked about the struggles they face in feeding and educating the children, and how large the class sizes are there, but also how the children are so keen to learn to achieve better futures for themselves. Annette also told us about the impact of Covid and how children didn't go to school for 2 years (they didn't have remote education there), and how many children and teenagers didn't return to school afterwards, instead having to help their parents or get married. We enjoyed watching a video of the Pearl of Africa choir singing and dancing, and we look forward to hopefully seeing them when they tour the UK later in the autumn.

See some of the fascinating facts we learnt on the next page.



Class News

Visit from Annette, a headteacher from Uganda (continued)

The children asked some fantastic questions, and here are some facts that we found out:

<p>The Pearl of Africa Choir tours the UK each year to raise money for the charity.</p> 	<p>There is no electricity or water in people's homes, only in the school.</p>	<p>For breakfast every day they feed the children a cup of porridge with sugar.</p>	<p>For lunch and supper they have posho (a food product made of cornmeal) and beans.</p> 	<p>They can't afford bread for the children, and they have meat approximately once a year.</p>
<p>The adults use a boda boda (a motorbike) to travel around.</p> 	<p>The average walk to school is 30 minutes. One 14 year old girl walks 3 hours to school and back every day.</p>	<p>Some children live at the school in the children's homes.</p> 	<p>They only have computers in the high school, but not in the primary school.</p>	<p>Other schools charge a fee to attend, but the charity pays for this school so children can go for free.</p>
<p>In some cultures, the girls are married off at 12 because of the dowry (e.g. cows).</p>	<p>There are 56 tribes in Uganda.</p> 	<p>There are approximately 10 different languages in the classrooms.</p>	<p>They learn English at school.</p> 	<p>There are approximately 2000 children in the school and 300 staff.</p>
<p>About four-fifths of the population is Christian, primarily divided between Roman Catholics and Protestants.</p>	<p>Other religions include Islam or no faith.</p>	<p>It gets dark by 6pm in Uganda.</p>	<p>It stays the same temperature all year around, because it is near the Equator.</p> 	<p>They have dry seasons and rainy seasons in Uganda. It is 30 degrees there at the moment!</p>
<p>At the school they have a farm school where they grow their own produce and learn to look after livestock.</p> 	<p>Agriculture is the main source of income in Uganda.</p> 	<p>They go to school on Saturdays as well as Monday-Friday.</p>	<p>On Sundays they go to church and have time to do homework, as well as some free time.</p>	<p>In most classes there are between 50—80 children.</p> 

If your message is **urgent** or about **attendance** contact Mrs Pelosi in the **office**:
01983 740285
office@brighstoneprimary.org.uk
Office Hours 8am - 4pm

If you would like to speak with the **Headteacher** Mrs Lennon, you can find her at the school gate every morning or you can call 740285 to make an appointment with her



For **general enquiries** you can call or email the office, text the school messaging service or send a message to our school **Facebook** page: <https://www.facebook.com/BrighstoneCEPrimarySchool>
Our Facebook page is open so you do not need a personal account to view it

If you have concerns about your child's **learning** and progress, email the class teacher in the first instance and allow at least 1 working day for a reply:

Years R, 1 & 2 - teacher.bumblebee@brighstoneprimary.org.uk
Years 3 & 4 - teacher.honeybee@brighstoneprimary.org.uk
Years 5 & 6 - teacher.ivybee@brighstoneprimary.org.uk

If you have concern regarding **safeguarding** or your **child's mental health and wellbeing** please contact Mrs Jones. You can speak to her on the playground every morning, call into the school office or email m.jones@brighstoneprimary.org.uk
safeguarding@brighstoneprimary.org.uk

Our **Newsletter** is published every Friday with key information for parents and carers. You can find it on our school website: <https://www.brighstoneprimary.org.uk/category/the-buzz/>

Contact us



If you have a **safeguarding** concern about a child outside of school hours you can call the police on 999 if you feel they are at risk of immediate harm or contact Children's Services on 0300 300 0117

Gates

The gates will now be closed at 3pm every day, rather than at the end of clubs. Please collect your children from after-school clubs from the hall door, except for the bell ringers (St Mary's Church) and cricket club (Warnes Lane).

Many thanks.

Key dates this year

- Monday 24th April: Y6 SATs parents' information meeting at 5pm
- Tuesday 25th April: Y2 SATs parents' information meeting at 8.30am
- May: Y2 SATs 'quizzes'
- Friday 5th May: King's Coronation Celebrations (letter to follow)
- Monday 8th May: Extra Bank Holiday (due to the King's Coronation)
- Tuesday 9th—Friday 12th May: Y6 SATs
- Sunday 14th May: Walk the Wight
- Tuesday 16th May: Royal Coronation Junior Prom at Osborne House (TBC)
- Friday 26th May: Last day of term
- Monday 29th May - Friday 2nd June: Half term
- Friday 16th June: Mufti day in return for cakes for Northcourt Manor Open Gardens
- Monday 19th—Wednesday 21st June: Y4 Kingswood residential
- Friday 23rd June: Sports Day (details to follow nearer the time)
- Monday 26th June: Tony Peek Poetry Workshops
- Thursday 29th June: Y6 Leavers' Service at Portsmouth Cathedral (letter to follow nearer the time)
- Tuesday 4th and Wednesday 5th July: High school transition days
- Tuesday 4th July: Whole school transition morning
- Friday 7th July: Reports go home
- Tuesday 11th July: Forest Day (TBC)
- Tuesday 11th July: Parents Evening
- Friday 14th July: Science Day (details TBC)
- Monday 17th—Tuesday 18th July: Y6 Corfe residential (details to follow)
- Thursday 20th July: School closed for staff development day





This April, we're excited to be launching our **NEW** tastier than ever menu that reflects the freshness and excitement of summer. Our pupils can also expect some extra exciting theme days this term to tantalise their tastebuds. See what's in store below.



[Fun theme day menus](#)

Chartwells

 **Bumblebee Conservation Trust**



BUSY BEES

Now is the most important time of year for the humble bumble bee who have such an impact on the food we eat every day.

Did you know if bees weren't here, we'd run out of most foods within three years!

Look out for brilliant bee themed activities this May in partnership with the Bumblebee Conservation Trust!

[Buzzing to find out more?](#)

FREE SCHOOL MEALS

Let's make sure you're getting the most out of your school lunches, all children can get a FREE school lunch if they're in reception or year 1 and 2. Simply speak to your school office for more details.

Children in year 3 or above may also be eligible for a free school lunch.

[Check if you're eligible here](#)



CELEBRATE THE KING'S CORONATION

Friday 5th May 2023

SANDWICHES

- Tuna and Cucumber
- Ham and Salad
- Cheese and Tomato

SIDES

- Pizza Whirl
- Potato Wedges
- Carrot & Cucumber Batons


DESSERTS

- Victoria Sponge Cupcake
- Fresh Fruit

ARTS

JAYDENE-LEE

DANCE, AERIAL, BUNGEE FIT AND CIRCUS



Contemporary Dance • Circus • Aerial Silks • Aerial Yoga • Bungee Fit!

(Classes are based on age/ability).

Classes for all ages • Workshops • Performance opportunities • Exams • Birthday Parties • Hen do's • Private Bookings • 1-1's • Weddings/Events & much more!

To book/for more information please contact:
info@jaydenearts.com | 077115450640 | <https://bookshen.com/jaydenearts>
 FACEBOOK @jaydenearts1 | INSTAGRAM @jaydene.lee.arts

We Provide Support for LGBTQ+ young people across Hampshire & Isle of Wight



Est 1993
BREAKOUT YOUTH

We cover the following areas:

Southampton	New Milton	Andover	Hart & Rushmoor
Isle of Wight	Marchwood	Eastleigh	East Hants
New Forest	Basingstoke	Romsey	North Hants

SUPPORT • RESPECT • DIVERSITY

Find out more...

☎ 023 80 224 224
 ✉ hello@breakoutyouth.org.uk
 🌐 www.breakoutyouth.org.uk

[breakout_youth_uk](https://www.instagram.com/breakout_youth_uk) @breakout_youth
 Breakout Youth Project

Supported by



Registered Charity No. 1180296 | Company Limited by Guarantee No. 11037021 | Registered Office: 30 The Avenue, Southampton, SO17 1SN




Mini BioBlitz
How many species will you find?

Create natural art with willow and print making

Nature themed menu in our cafe

Spot the wildlife in our Mosaics

BRADING ROMAN VILLA

Earth Day

Saturday 22 April 2023

Celebrate the nature and wildlife of Brading Roman Villa

Entry to the museum
£3 per adult
£1.50 per child
FREE parking

The Wild Escape

Led by **Art Fund**



Joined by:
Butterfly Conservation
Hampshire and Isle of Wight
Wildlife Trust

Kathy Grogan - Learning Wild
IW Natural History & Archaeological Society

www.bradingromanvilla.org.uk

Supported by:
ARTS COUNCIL ENGLAND

Vintage Scoops ice cream

We'll be at:

BRIGHTSTONE METHODIST CHURCH
WEDNESDAYS
 2.30-4.30pm

'Betty' is coming to town!!

Run for Islanders affected by cancer

WESSEX CANCER TRUST

Entertainment village for a full day of fun

3k fun run through inflatables, powder paint and foam!

Video game themed

RAINBOW RUN BUBBLE FUN 2023

SUNDAY, 25 JUNE 2023 | IW COUNTY SHOWGROUND

With live entertainment from:

Ear Candy **Azi** **The Bandits** Plus much more!

Get in touch at 023 8067 2200 or fundraising@wessexcancer.org.uk

Wessex Cancer Trust, a charity registered in England and Wales (110216)

Scan to sign up!



Kindly sponsored by

wightfibre because we care

No Limits
Helping Young People Help Themselves

NHS
Isle of Wight
Clinical Commissioning Group

Space4U

A safe haven for young people aged 11-17* living on the Isle of Wight

*Up to age 18 with additional needs

- Out of Hours emotional and practical support with mental health.
- Help to explore your current situation
- Learn self-management techniques
- Enable you to make positive changes

Monday's
(5pm-8pm by appointment)
East Newport Family Centre
Furlongs
Newport
PO30 2AX

Tuesday's
(4pm-7pm by appointment)
Sandown Family Centre
98 The Fairway
Sandown
PO36 9EQ

(Virtual support available during Covid)

Contact us today to find out more:

02380 224 224

07741 665182

enquiries@
nolimitshelp.org.uk



SCAN ME

www.nolimitshelp.org.uk
023 8022 4224

FUN COMMUNITY FOOTBALL!

FREE Football for Reception and Y1 pupils

Where?
The Bay CE Primary School

When?
Wednesday 4:20pm-5pm

Meet new friends and get active!
Enjoy positive early experiences of sport!
Boost confidence and improve social skills!

To book a place, text your child's name and year group to 07594 389531

Schools Walk the Wight with Mountbatten

Sunday 14 May 2023

Registration opens 1 March!

FR Registered with FUNDRAISING REGULATOR
A registered charity no. 1029006

GIRLS ONLY FOOTBALL



INTRODUCING OUR SANDOWN SOCCER GIRLS ONLY FOOTBALL SESSION!

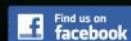
OUR FUN SESSION WILL BE:

WHEN: Every Wednesday. 5pm to 6pm

WHERE: The Bay CE Primary School, Sandown

COST: £4 for the 1 hour session

To Book: Text your child's name, school, year group and parent name to **07594 389531**



Sandown Soccer - Isle of Wight



IS YOUR CHILD TOO YOUNG TO JOIN A TEAM?

DOES YOUR CHILD WANT TO BUILD THEIR CONFIDENCE IN A SPORTING ENVIRONMENT?

DOES YOUR CHILD WANT TO PLAY FOOTBALL BUT NOT IN A TEAM YET?

IF YOU'VE ANSWERED YES TO ANY OF THOSE QUESTIONS, WE'VE GOT THE PERFECT SOLUTION!

WE PROVIDE A SAFE, ENJOYABLE ENVIRONMENT WHERE CHILDREN CAN HAVE FUN WHILST IMPROVING THEIR FOOTBALL SKILLS.

OURS AIMS ARE:

- TO ALLOW CHILDREN TO HAVE FUN THROUGH FOOTBALL
- TO IMPROVE CONFIDENCE AND SOCIAL SKILLS.
- TO LEARN AND IMPROVE BASIC FOOTBALL SKILLS: CONTROL, PASSING, DRIBBLING.
- TO DEVELOP AGILITY, BALANCE, CO-ORDINATION, SPEED (ABC'S).

Our fully FA qualified coaches have up to date First Aid training and are DBS checked. Each session will be packed full of fun games played in teams, and as individuals, to help children build friendships as well as independence.

To Book: Text your child's name, school, year group and parent name to **07594 389531**

SCOOPS AFTER SCHOOL ICE CREAM

2.50



ISLE OF WIGHT SYMPHONY ORCHESTRA
conductor: Jonathan Butcher

Franz Liszt
Hungarian Rhapsody No.2

Maurice Ravel
Pavane pour une enfant défunte

Alexander Glazunov
Violin Concerto in A minor
soloist: Charlie Lovell-Jones

Nicolai Rimsky-Korsakov
Scheherazade

Saturday 13th May 2023
Medina Theatre, Newport
7.15pm

Adults £16
Under 18s £7

(includes theatre ticket booking fee)
Box Office: **01983 823884**
or online at medinatheatre.co.uk

iwso.co.uk



WIGHTLINK
ISLE OF WIGHT FERRIES

Isle of Wight Symphony Orchestra Society is a registered charity, no. 292319

Tired Of Swimming Lengths?

Underwater Hockey is a great way to stay fit and still enjoy the pool. No two games will ever be the same, so why not try something different? We promise you won't get bored!



Junior Underwater Hockey

There are many junior Underwater Hockey teams around the country. It's a great way for children to enjoy the game and get some exercise at the same time.

Underwater Hockey is a team sport so there is a great opportunity for children to make some friends along the way.

As long as you are a confident swimmer, you should be able to play Underwater Hockey.

**Many clubs have a free taster session!
Contact your local club to find out.**

How To Get Involved

There are over 100 teams across Great Britain so finding your local team shouldn't be too difficult! There are details below to show you your local team contact.

There are details on our website as well **gbuwh.co.uk**

Or you can find us on social media, feel free to send us a message, and we can help you find a team.



You can find details for your local club here:

Spaces available in the IW junior team!

Sunday Evenings 6pm - 7pm
at the lovely warm
Waterside Pool in Ryde

Please contact our friendly
and supportive coach Mary
at marycockayne@gmail.com

Taster sessions free!

Photo Credits:

Chris Alwin, Vicki VanDer Westhuizen Risianova, Gabriel Holguin, Australia UWH, Canada UWH & Spain UWH

Underwater Hockey (Octopush)



Great Britain Underwater Hockey



@gbuwh



What is Underwater Hockey?

Underwater Hockey is a team game played on the bottom of the swimming pool!

There are two teams competing to get a small weighted puck into their opponents' goal. The game is played exclusively on the bottom of the pool so players need to hold their breath whilst playing.

Team work is so important in Underwater Hockey, each team has 6 players and 4 rolling substitutes.

Players use a small stick to move the puck. This stick is the only way a player can move the puck.

What Equipment Do You Need?

Players wear a mask, snorkel, fins, water polo hat, and glove. Fins allow players to swim much faster meaning the game can move extremely quickly even underwater.

Don't worry though if you want to give Underwater Hockey a try, many clubs have equipment they can lend out to new players.

Who Can Play?

Underwater Hockey can be played by almost any age of player! Junior clubs tend to welcome players above the age of 8 years old. The only real requirement for Underwater Hockey is that you can swim!

Many clubs also offer free taster sessions.

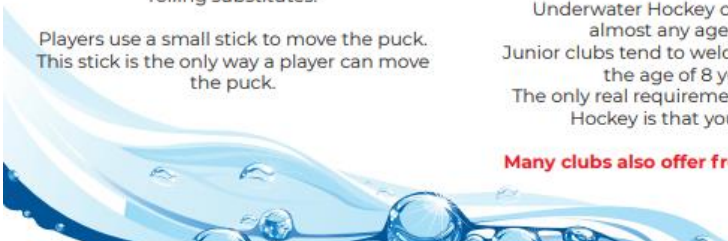
Team GB Underwater Hockey

Underwater Hockey was founded in Great Britain, and the British teams have been to many World Championships over the years.

There are currently 4 different categories, which are then split again into male and female teams. Under 19s, Under 24s, Elite, and Masters.

Great Britain has an amazing history representing their country around the world. With some players having multiple medals to their name.

Underwater Hockey is played around the world, with over 40 countries across 6 continents playing the sport.





Sandown Soccer - Isle of Wight

SANDOWN SOCCER

at The Bay CE Secondary

FOR CHILDREN AGED 4-11

Week 1: 3rd - 6th April
Week 2: 11th - 14th April

Mini-Soccer camp for children. Aiming to provide a fun and enjoyable environment whilst developing and improving players footballing ability!

10AM - 3PM £12 a day

- ★ FA Qualified coaches with enhanced DBS and up to date first aid and safeguarding training.
- ★ Fun football games to develop agility, balance, coordination and speed!
- ★ Win medals by becoming Penalty, Keepy-uppy, Crossbar or Speed Champion as well as our Best Attitude, Most Improved and Future Star awards!
- ★ Take part in the Sandown Soccer World Cup where one team will be crowned **WORLD CHAMPIONS!!!**



5 hours of fun EVERY day!
10am - 3pm
Inclusive football for **ALL** abilities!

Only £12 a day!
Find us on Facebook
Sandown Soccer - Isle of Wight

Have questions or would like more information?
Contact Lewis (Mr Mitchell)
sandownsoccer@yahoo.com
07594 389531

SANDOWN SOCCER

Children are welcome to come for one day or for ALL the days!

Attend at least 3 out of the 4 days during the week and win a medal for all of your hard work!

To book a place text your child's name, school year, dates and your name to 07594 389531

Starting on Friday 28th April, Mr Goldsmith will be running eight Dynamos Cricket sessions for children aged 8-11 at Cowes Cricket Club.

The sessions are open to all children aged 8-11 (not just from Brighstone) and will run between 5.15pm and 6.15pm each Friday evening, with the final session taking place on Friday 16th June.

The cost of the eight-week programme is just £20 - to sign up your child, please click on the following link - <https://ecb.clubspark.uk/Dynamos/Course/3967cab0-ff75-4535-94ed-8c5393c65e6e>. For signing up, your child will receive a personalised playing shirt, Topps Cricket Attax Cards and access to the Dynamos App.

Any children that sign up could end up as part of the Cowes U11 hardball squad, whilst any girls that sign up will be part of the Cowes U11 Girls Dynamos squad for the 2023 season.



DYNAMOS CRICKET

This is our game.

dynamoscricet.co.uk

Join us at:
Cowes Cricket Club (COW Community Club)

Session dates:
Friday evenings - First Session 28th April, Last Session 16th June

Session timings:
5.15pm-6.15pm

Contact:
For more info, email Ash Goldsmith - ash@cowescricketclub.co.uk

Join us for All Stars at Ventnor CC

Steephill Rd, Ventnor, PO38 1UF



Open to 5-11 year olds

Tuesdays 4 - 4.45pm

Starting Tuesday 23rd May

Phone Ruth on 07917306984 for details or sign up online.

SCOOPS WHEATSHEAF LANE YARMOUTH AFTER SCHOOL ICE CREAM 2.50



PLAY JUNIOR RUGBY

Vectis Rugby club have spaces open in all age groups from U5 to U12

Every Sunday at IWRFC in Wootton at 10am.

First two sessions are free
Email for more information

Email: vectisrfccoaching@gmail.com

www.vectisrugby.co.uk



Sessions are all delivered by experienced coaches with first aid qualifications and DBS Checks.

CHILDREN'S SHOW SCHEDULE 2023

SPRING SHOW

Saturday 1st April

Wilberforce Hall, Main Road, Brighstone
1.30pm to 4.00pm Presentations at 4.00pm

125th BHS MARQUEE IN NEW SUMMER SHOW

Saturday 15th July

Recreation Field, New Road, Brighstone
Marquee opens 1.30pm Presentations at 4.00pm

AUTUMN SHOW

Saturday 7th October

Wilberforce Hall, Main Road, Brighstone
1.30pm to 4.00pm Presentations at 4.00pm

SPRING SHOW

Please state your age on the entry form, then it will be taken into consideration.

- 72. A Painting or Drawing for King Charles’s Coronation.
- 73. A driftwood model of a dinosaur.
- 74. 4 Fairy Cakes, made and decorated.
- 75. Floral art – An Easter Posy.
- 76. 4 Decorated Rich Tea Biscuits, Coronation Themed (judged on decoration only).
- 77. Handwriting:

God save our gracious King!
 Long live our noble King!
 God save the King!
 Send him victorious,
 Happy and glorious,
 Long to reign over us,
 God save the King.

AUTUMN SHOW

Please state your age on the entry form, then it will be taken into consideration.

- 118. A Christmas Card.
- 119. 4 Christmas or Halloween cup cakes made and decorated.
- 120. A driftwood reindeer.
- 121. My favourite pot plant, grown by entrant.
- 122. An Autumn painting or drawing A4 max.
- 123. A model made from Lego, no bigger than 30cm x 40cm
- 124. Handwriting:

Rain, rain go away,
 Come again another day.
 Rain, rain go away,
 Little Johnny wants to play.

SUMMER SHOW

CHILDREN’S CLASSES

Prize money for children’s classes: 1st - £1.50, 2nd - £1, 3rd - 50p. Your age must be displayed clearly, then it will be taken into consideration.

Classes 156 and 163 must be arranged by the exhibitor on site without assistance.

For ages 9 and under:

- 151. Something new from something old.
- 152. My pet - a painting/drawing A4 max.
- 153. My favourite “snapshot” (must be taken by entrant).
- 154. A creature made from a vegetable
- 155. A creature made from driftwood and shells.
- 156. Garden flowers in a teapot.
- 157. A miniature living garden (in a bowl or pot).
- 158. 4 decorated biscuits (judged on decoration only).
- 159. 4 pieces of flapjack, any variety.

For ages 10 to 16

- 160. A miniature scarecrow – maximum size 30 cm.
- 161. Still Life – a drawing or sketch.
- 162. My favourite “snapshot” (must be taken by entrant).
- 163. A miniature herb garden (in a bowl or pot).
- 164. A miniature building made from driftwood and shells.
- 165. A carrot cake.
- 166. 4 decorated fairy cakes.

For all ages up to 16

- 167. New class for 2023 – Grow a squash any variety.
- 168. Handwriting:
 Incy, wincy spider climbed up the spout,
 Down came the rain and washed the spider out,
 Out came the sun and dried up all the rain,
 And incy, wincy spider climbed up the spout again.

CHILDREN’S ENTRY FORMS (ALL ENTRIES ARE FREE)

AUTUMN SHOW 2023

Entry forms must reach the Show Secretary **no later than Wednesday prior to the show**. Please post your entry in the box at The Village Shop, Brighstone or hand to the Show Secretary at Bluebells, North Street, Brighstone.

NAME (BLOCK CAPITALS) _____ AGE _____

ADDRESS _____

PHONE NUMBER _____

Children’s Classes

Please circle: 118 119 120 121 122 123 124

Number of entries _____

✂️*****

SUMMER SHOW 2023

Entry forms must reach the Show Secretary **no later than Wednesday prior to the show**. Please post your entry in the box at The Village Shop, Brighstone or hand to the Show Secretary at Bluebells, North Street, Brighstone.

NAME (BLOCK CAPITALS) _____ AGE _____

ADDRESS _____

PHONE NUMBER _____

Children’s Classes

Please circle: 151 152 153 154 155 156 157 158 159

160 161 162 163 164 165 166 167 168

Number of entries _____

✂️*****

SPRING SHOW 2023

Entry forms must reach the Show Secretary **no later than Wednesday prior to the show**. Please post your entry in the box at The Village Shop, Brighstone or hand to the Show Secretary at Bluebells, North Street, Brighstone.

NAME (BLOCK CAPITALS) _____ AGE _____

ADDRESS _____

PHONE NUMBER _____

Children’s Classes

Please circle: 72 73 74 75 76 77

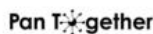
Number of entries _____



What is the Living Well & Early Help Service?

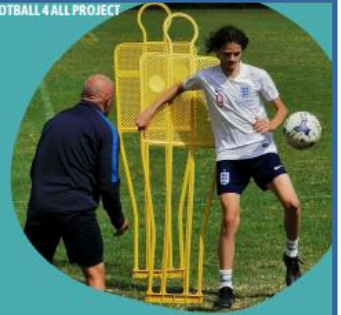
We are focussed on identifying and providing support for people before they reach crisis and working with communities to build capacity to provide that support

Working in Partnership to reach all communities of the Isle of Wight



FOOTBALL 4 ALL PROJECT

We focus on the individual - on their strengths, passions and capabilities - building on their existing support networks, family and friends within their community



LIVING WELL & EARLY HELP 5 KEY PRINCIPLES

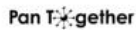
- 1 Community
- 2 Resilience
- 3 Relationships
- 4 Person Centered
- 5 Partnership



ASPIRE WOODWORK GROUP MAKING BAT BOXES



We will support people to look for practical solutions wherever possible and focus on what the person can do for themselves using their skills and experience rather than automatically looking for a service response.



CRAFTERNOON SESSION

At the community level, the service will strengthen partnerships between local organisations involved in community wellbeing, including parish and town councils, local community organisations and Island-wide organisations (statutory and voluntary) that operate at local levels.

The aim is to establish semi-autonomous community 'hubs', similar to those already existing in areas like Ryde, West Wight, Ventnor and Pan, throughout the Island. The nature of the hubs will vary, depending on the needs and resources of each area.

EVERYONE HAS THEIR OWN STRENGTHS, PASSIONS AND CAPABILITIES

BUILDING STRONG COMMUNITIES

We promote and encourage connections, developments and contributions by individuals and the community. By spending time identifying the strengths, passions and capabilities of individuals, services and places we support communities to help themselves and create local solutions.

Pan Together providing Christmas Lunch



Ventnor Community Shed

Stepping Stones Homelessness prevention program



Our Place Mindfulness Coloring

INDIVIDUALS - EVERYONE HAS STRENGTHS, PASSIONS & CAPABILITIES.

Everyone within our communities has their own skills, knowledge and passions. Living Well & Early Help identifies, encourages and nurtures individuals to utilise them. Deficit approach define communities and individuals in negative terms. An Asset approach accentuates positive capability to identify problems and activate solutions.

SERVICES - PEOPLE ORGANISED AROUND ASSETS.

Services are generally professionals or paid services who are structurally organised. They include government agencies and private business, as well as schools, etc. They can all be valuable resources. The assets of these institutions help the community capture valuable resources and establish a sense of civic responsibility.

PLACE - PEOPLE LIVE WHERE THEY LIVE FOR A REASON.

Land, buildings, heritage, public and green spaces are all examples of assets of the community. Individuals tend to be in a specific place for a specific reason. The people living in a community are most likely to know what its strengths are and how to utilise them.

CONNECTION - PEOPLE SUPPORTING PEOPLE.

Small informal groups of people, such as clubs, groups and common interest activities are critical to the delivery of the Living Well and Early Help Service. They don't need complicated processes. They are just coming together around a common interest of their individual choice.

VISIBILITY - BEING PART OF THE COMMUNITY.

The Living Well & Early Help workers are based within the community working in agile ways within defined localities finding spaces within community hubs, libraries, cafes etc. People should be able to approach workers individually as well as being referred in by any person or service. The Living Well & Early Help service supports people to develop their own solutions and ways of achieving their best possible lives, drawing on family and community resources, before considering commissioned or statutory services. Living Well and Early Help workers invest time in building relationships and understanding what a person's idea of their best life is. It also helps people to develop and build their own capacity and connections, so that they can stay strong and independent.

DEVELOPMENT - INDIVIDUALS CONNECT INTO A COMMUNITY.

Living Well and Early Help recognises that the exchange between people sharing their passion, gifts, skills and assets creates connections, and these connections are a vital asset to the community. It takes time to find out about individuals; this is normally done through building relationships, person by person. The social relationships, networks and trust form the social capital of a community. The Living Well and Early Help service knows the value of these assets and the importance of building relationships to increase the social capital within each unique community.

WAVES OF WELLNESS - SUICIDE PREVENTION PROJECT



reception@lweh.org.uk 01983 240732



The Living Well and Early Help Service is a Council and NHS funded project specifically set up to support people on the Isle of Wight to stay safe, strong, well, resilient, in control, independent and connected with their local community.

We are focussed on identifying and providing support for people before they reach crisis and working with communities to build capacity to provide that support.

We will support people to look for practical solutions wherever possible and focus on what the person can do for themselves using their skills and experience rather than automatically looking for a service response.

By spending time identifying these strengths, passions and capabilities of individuals, services and places, we support communities to help themselves and create local solutions.

This service will be available as a drop in from a mobile van situated in the car park at the end of Warnes Lane on the following days:

- Wednesday 29th March 2023 from 13:30-14:45 and
- Tuesday 25th April 2023 from 13:30-14:45

Please wait to be contacted by the NHS if you're eligible



 **COVID VACCINATION PROGRAMME UPDATE** 

SPRING BOOSTER

DOSE WILL BE OFFERED TO:

- EVERYONE aged 75 and over.*
- Residents in care homes for older adults.*
- People aged 5 and over who are immunosuppressed.*

OFFER OF FIRST AND SECOND DOSES WILL END AT THE SAME TIME AS SPRING BOOSTERS ON 30 JUNE