

# The Buzz

## 3rd March 2023



Learning and Achieving Through Love,  
Courage and Respect

Dear parents, carers and children,

That's the thing about books. They let you travel without moving your feet. (Jhumpa Lahiri)

The more that you read, the more things you will know. The more that you learn, the more places you'll go. (Dr. Seuss)

Reading is an exercise in empathy; an exercise in walking in someone else's shoes for a while. (Malorie Blackman)

Books are a uniquely portable magic. (Stephen King)

Once you have read a book you care about, some part of it is always with you. (Louis L'Amour)

Research shows that reading for pleasure can promote better health and wellbeing, aids in building social connections and relationships with others and is associated with a range of factors that help



increase the chances of social mobility. Reading opens the mind and takes you to new worlds. Today, we celebrated **World Book Day**. Everyone wore their lovely snuggly pyjamas and

took part in lots of fun reading activities, including a Hive Book Quiz, Drop Everything And Read (DEAR), Share a Story, and lots more (see photos on Facebook and in this week's Buzz). Each child has received a £1 book token to spend on a book of their choice. Is there a book that you have read that has always stayed with you? Is there a book that you would always recommend to others? Are you currently reading a book? Where is it taking you?

Next week, we are asking for your generosity in supporting one of our **Ukrainian families**. One of their daughters is very ill with a kidney disease and they have had to go back to Ukraine for medical treatment. Treatment in Ukraine has to be paid for and is very expensive, so we are holding a **fundraising day** on Friday 10th March to help them with the fees. Children and staff are asked to wear blue and yellow in return for a donation. I understand that we are in difficult times with the cost of living crisis, so, if you would like to, please just give what you are able to; every little bit helps. Cash donations are being collected by Mrs Pelosi in the office or by the class teacher next Friday. A huge thank you for your support, and we hope to see them back in school soon.



The following Friday (17th) sees **Red Nose Day**. In return for a small donation, children and staff are asked to wear red and have silly hair. How silly can you make it? Bigger? Brighter? Scarier? Funnier? I look forward to seeing what you come up with!

Today we welcomed Charlotte from The Earl Mountbatten Hospice, who came to talk about **Schools Walk the Wight**. It was great to see so many hands go up when asked who has taken part in it in previous years, and then to see even more hands go up when asked who would like to take part in it this year. Each child has been given a bookmark (perfect timing on our World Book Day!) which has details of how to sign up. We are looking to put a staff team together to walk it on the day. How many of you will join the fun to help raise money for the hospice?



In preparation for Easter, the Messy Church team are holding a **poster competition** with the theme The Easter Story. Children are asked to paint/draw an A4 picture of what it means, and the winning one(s) will be put on the notice boards at both the Methodist Church and St Mary's. Please hand in your entries to school by Friday 24th March so we can pass them on.

I hope you all have a lovely weekend, and I look forward to seeing you on Monday. With best wishes, Mrs Lennon and the Brighstone Team

## Collective Worship - Forgiveness

This week's Collective Worship theme is **Forgiveness: Turning over a new leaf**

If a person is forgiven for something that they have done that is wrong, they usually want to show that they mean to behave differently in future. Sometimes we call this 'turning over a new leaf'. It is a fresh start.



When Jesus visited a man called Zacchaeus, that's exactly what happened.

What did Zacchaeus do that was wrong?

happened.

What did Zacchaeus do to show that he had turned over a new leaf and changed?

Why were people shocked when Jesus chose to visit Zacchaeus' house?

### The New Leaf Prayer

Father God,

You offer forgiveness to us today

Just as you did to Zacchaeus 2000 years ago.

Like Zacchaeus, help us to turn over a new leaf and begin again.

Help us to show others we are sorry by the way we sometimes behave.

Amen



"Just as the Lord has forgiven you, so you must also forgive others."

Colossians 3.13

## School Dinners

Children in **Year R, 1 and 2** are entitled to a 'universal' free school meal everyday.

Children in Years 3-6 are charged at **£2.55** per day.

Baguettes now available on Tuesdays and Thursdays instead of JPs (ham, cheese or tuna)

| Week 3   | Monday          | Tuesday          | Wednesday    | Thursday         | Friday        |
|----------|-----------------|------------------|--------------|------------------|---------------|
| Option 1 | Macaroni Cheese | Bangers and Mash | Roast Turkey | Beef bolognese   | Fish Fingers  |
| Option 2 | Veggie Sausages | Tomato Pasta     | Tomato Pasta | Veggie bolognese | Quorn dippers |
| Dessert  | Ice cream       | Jelly            | Cookie       | Apple Crumble    | Shortbread    |

## Poetry Corner

### Open A Book

Open a book  
And you will find,  
People and places of every kind;  
Open a book  
And you can be,  
Anything you want to be;  
Open a book  
And you can share,  
Wondrous words you find in there  
Open a book  
And I will too,  
You read to me,  
And I'll read to you!



## Grammar and Spelling Matters

Each week we will include a mini grammar or spelling lesson so you know what your children are learning!

### Relative clauses

## Relative Clauses



It is used to give extra information about the nouns in the main clause, without starting another sentence. A **relative clause** starts with a relative pronoun.

|                     |   |  |
|---------------------|---|--|
| <b>who / that</b>   | Subject or object pronoun for people            | That's the woman <b>who</b> bought my house.                           |
| <b>which / that</b> | Subject or object pronoun for ANIMALS or THINGS | The horse <b>which</b> Mary was riding is very friendly and beautiful. |
| <b>where</b>        | Refers to a PLACE                               | We found the wood <b>where</b> I used to go.                           |
| <b>when</b>         | Refers to a TIME expression                     | I will never forget the day <b>when</b> I graduated.                   |
| <b>whose</b>        | POSSESSION for people, animals and things       | The mother <b>whose</b> child is missing is very sad.                  |



[www.englishstudyhere.com](http://www.englishstudyhere.com)

My mother, **who has brown hair**, is standing there.

main clause      relative clause      main clause

- information about main clause
- usually introduced by a **relative pronoun**

who    that    which    whose    whom

## Safeguarding

If you have a concern about a child you can call the police on 999 if you feel they are at risk of immediate harm

Contact us: [safeguarding@brighstoneprimary.org.uk](mailto:safeguarding@brighstoneprimary.org.uk)

Speak with our DSL Mrs Jones in the school office

You can contact the NSPCC:

### Contact the NSPCC Helpline

If you have any concerns at all about a child's safety or wellbeing, don't hesitate to contact us.

Call us or email [help@nspcc.org.uk](mailto:help@nspcc.org.uk)

**0808 800 5000**

**Find out more**

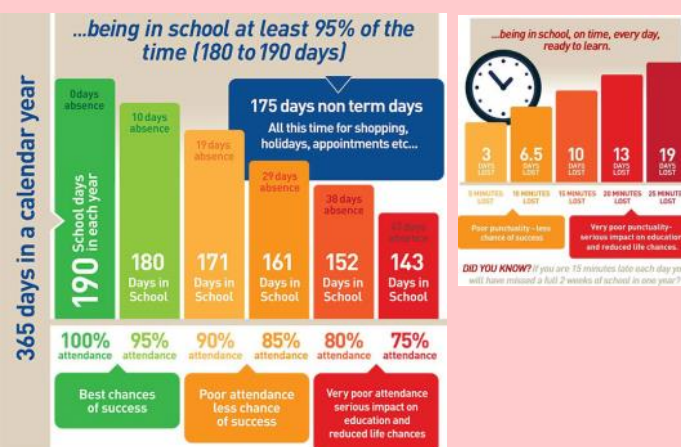
Or call children's services 0300 300 0117

## Attendance Matters!

Week Commencing 27th February  
Whole School attendance target: **96.5%**

Actual Attendance: **93.7%**

Late marks this week: **0**





## Spring Reflections

For many people, daffodils represents hope and resilience, as they bring a splash of colour and sunshine, and announce the beginning of Spring.

What brings hope and positivity into your life? How can you surround yourself with the people and things that make you smile?

In the Greek myth, Narcissus fell in love with his own reflection and pined away. Rather than focusing on yourself, and your own circumstances, is there something or someone else that brings hope and meaning into your life?

*“How can you affirm those around you and help them flourish? You normally have to be bashed about a bit by life to see the point of daffodils, sunsets, and uneventful nice days”*

Alain de Botton



# News from the Classrooms

## World Book Day

What a fun day we have had, all snugly and cosy in our pyjamas!

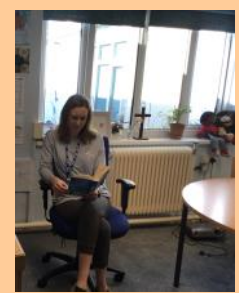
Reception and Year 1 children drew their book covers before matching them up. Adah the storyteller then came in to read to/with Bumblebee Class before home time.

Honey Bee class coloured in some famous book quotes, to make a display in our classroom. They also had a music lesson with Mr Stroud where they looked at the story of the gingerbread man and how the music contributed to the story and made us feel all of the different emotions that went along with it. They also did some acting out of their favourite stories, as well as some maths.

Ivy Bee class have been researching all things to do with Shackleton's Journey and have taken on the role of book illustrator for a new book about Shackleton's epic adventure. They have to consider which images would capture a reader's imagination. In order to do this, Year 5 have looked at archive film footage from the expedition and Year 6 have used the internet to research the sinking of Endurance. They are becoming experts in the history of this amazing adventure.

The whole school took part in a Hive Bumper Book Quiz, during which children worked together to answer questions about characters, settings and events, authors and illustrators and name the character picture round. Well done to Yellow Hive who came first!

We had a DEAR (Drop Everything And Read) time, when Mrs Lennon rang the bell and everyone had to stop what they were doing and read their books, and then we held a second-hand book sale after school to raise money for some new books. We will hold this again next Friday after school.



# News from the Classrooms

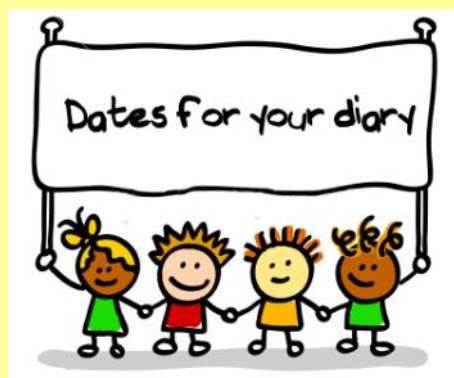
## World Book Day





## Key dates this year

- Friday 10th March: Blue and yellow fundraising day
- Monday 13th March: Parents Evening
- Tuesday 14th March: Parents Evening
- Friday 17th March: Red Nose Day (wear red and silly hair)
- Wednesday 29th March: Messy Church (KS1 morning; KS2 afternoon). Details to follow nearer the time.
- Thursday 30th March: Easter service at 1.45pm (further details to follow nearer the time)
- Friday 31st March: Last day of term
- Monday 3rd April - Friday 14th April: Easter holidays
- Monday 8th May: Extra Bank Holiday (due to the King's Coronation)
- Sunday 14th May: Walk the Wight
- Tuesday 16th May: Royal Coronation Junior Prom at Osborne House (details to follow nearer the time)
- Monday 29th May - Friday 2nd June: Half term
- Thursday 20th July: School closed for staff development day
- Friday 21st July: School closed for staff development day



Brighstone School Association

# MOTHER'S DAY

Gift  
£2.50 each

## Special

The children are being given the opportunity to purchase a special gift for a loved one for Mothers Day

Please NB all gifts are the same - colour may vary

If you would like your child to purchase a gift, please see email sent home and return form/money in a named envelope or order through our pta events page by 10th March

[pta-events.co.uk/brighstoneschoolassociation](http://pta-events.co.uk/brighstoneschoolassociation)



Brighstone School Association

YOUR HELP IS NEEDED  
**Sunday  
18th June**

We have the opportunity to run the Tea/cake stall at the garden opening @ Northcourt. This is a great fundraiser for us, and we have raised over 1K before.

However, we know the date clashes with the festival.

If you can commit to helping run the teas on this date can you let the BSA know by 3rd March.

If we can not get enough helpers we will unfortunately have to turn down this opportunity.

**YOUR SCHOOL LOTTERY**

- 1 JOIN OUR LOTTERY**
- 2 BOOST SCHOOL FUNDS**
- 3 WIN CASH PRIZES**

**It's As Easy As**

- Tickets cost just £1 a week
- The easy way to help us raise funds
- Every week, one lucky winner from our school will win a cash prize!
- Also a chance to win the £25k jackpot

To start supporting, visit:  
[yourschoollottery.co.uk](http://yourschoollottery.co.uk)  
and search for: Brighstone School

Supporters must be 18 years of age or older





### BSA Mother's Day Return Slip

Please return this slip in a named envelope with the correct money by the end of school on Friday 10<sup>th</sup> March.

If you would like to pay via card, please log into [pta-events.co.uk/brighstoneschoolassociation](http://pta-events.co.uk/brighstoneschoolassociation).

|              |  |
|--------------|--|
| Childs Name  |  |
| Childs Class |  |

|                 |  |
|-----------------|--|
| Number of gifts |  |
| Amount enclosed |  |

Gifts will come home with you child on Friday 17<sup>th</sup> March.

Thank you for your continued support.



WORLD  
BOOK  
DAY

# Sharing stories together

Children love spending time looking at books with adults. It makes a big difference to their futures to **spend 10 minutes a day sharing a story**. There are no right or wrong ways to read out loud but sometimes it can be tricky to know where to begin. Here are a few tips and ideas to get you started:



- **I wonder...**  
Ask open questions about how characters are feeling or what might happen next or why things are in the illustration.
- **Bring the book to life...**  
Make faces, use voices, include actions – have fun together!
- **That reminds me of...**  
Make personal connections.
- **What have you seen there?**  
Follow their interests.
- **That's made me feel...**  
Let your child know how the events of the story have affected you.
- **Oo look at that!**  
Let them know what you have noticed.
- **Again, again...**  
Re-reading is a great source of comfort for children– and a chance to spot things that you didn't see first time round. Challenge yourself to spot something new each time.

This guide is based on the work of The Open University. For further tips and advice on how to enjoy sharing and reading stories together, visit their website [here](#) for helpful videos and resources.



SPONSORED BY  
NATIONAL  
BOOK  
tokens

**Changing lives through a love of books and shared reading.**

World Book Day is a registered charity funded by publishers and booksellers in the UK & Ireland.

#WorldBookDay



The Living Well and Early Help Service is a Council and NHS funded project specifically set up to support people on the Isle of Wight to stay safe, strong, well, resilient, in control, independent and connected with their local community.

We are focussed on identifying and providing support for people before they reach crisis and working with communities to build capacity to provide that support.

We will support people to look for practical solutions wherever possible and focus on what the person can do for themselves using their skills and experience rather than automatically looking for a service response.

By spending time identifying these strengths, passions and capabilities of individuals, services and places, we support communities to help themselves and create local solutions.

This service will be available as a drop in from a mobile van situated in the car park at the end of Warnes Lane on the following days:

- Wednesday 29<sup>th</sup> March 2023 from 13:30-14:45 and
- Tuesday 25<sup>th</sup> April 2023 from 13:30-14:45






## ADULT COMMUNITY LEARNING

ALL COURSES ARE FOR ADULTS 19+

For further information or to book a place on any /all of these sessions please contact:  
info@thecrossley.co.uk or phone 01983 861164

### 90 Minutes to Family Calm Series

Join our **FREE** (fully funded) online classes! – Join one or join them all...

|   |                                       |                         |   |
|---|---------------------------------------|-------------------------|---|
|  | <b>BRAIN TRAINING FOR CALM</b>        | – 20th February         |  |
|  | <b>TAMING THE EMOTIONS MONSTER</b>    | – 27th February         |   |
|   | <b>SENSIBLE ABOUT OUR SENSES</b>      | – 6th March             |   |
|   |                                       | * no session 13th March |   |
|   | <b>BUCKET FILLING FOR SELF-ESTEEM</b> | – 20th March            |  |
|   | <b>RELAXING OUR KIDS</b>              | – 27th March            |  |

February—March 2023  
Monday mornings  
9:30-11:00

Booking & enrolment required to secure a place on any or all these sessions.  
\*enrolment required **just once** (for any number of sessions) per academic year





Holiday Club will be open to all children aged.  
9 months - 11 years.

If you wish your child to attend Holiday Club at  
Brightstone Preschool, please fill in the form below  
with days and times required.

Our opening times are 7.30 am until 5.30 pm.

Prices:

9-12 Months €7.00 an hour

12 Months - 2 Years €6.20 an hour

2 - 3 Years €6.00 an hour

3 Years - School Age €5.50 an hour

Payment will be due in advance.

Please enter the hours you wish your child to attend on each day and return via email.  
([brightstonepreschool@gmail.com](mailto:brightstonepreschool@gmail.com)) or a printed copy to Rosanna ASAP.

|  |   |   |  |  |
|--|---|---|--|--|
| <u>Monday</u><br>3 <sup>rd</sup> April 2023  | <u>Tuesday</u><br>4 <sup>th</sup> April 2023  | <u>Wednesday</u><br>5 <sup>th</sup> April 2023  | <u>Thursday</u><br>6 <sup>th</sup> April 2023  | <u>Friday</u><br>7 <sup>th</sup> April 2023  |
|  |   |   |  | <u>CLOSED</u>                                |
| <u>Monday</u><br>10 <sup>th</sup> April 2023 | <u>Tuesday</u><br>11 <sup>th</sup> April 2023 | <u>Wednesday</u><br>12 <sup>th</sup> April 2023 | <u>Thursday</u><br>13 <sup>th</sup> April 2023 | <u>Friday</u><br>14 <sup>th</sup> April 2023 |
| <u>CLOSED</u>                                |   |   |  |  |

|                 |      |                |
|-----------------|------|----------------|
| Child's name 1: | DOB: | Any Allergies: |
| Child's name 2: | DOB: | Any Allergies: |

|                                 |          |
|---------------------------------|----------|
| 30 hours stretched entitlement: | YES / NO |
| Parent or Carers Name:          |          |
| Contact No 1:                   |          |
| Contact No 2:                   |          |
| Email Address:                  |          |

Booking in: This is subject to demand, please book in by **Friday 24<sup>th</sup> March 2023** in order.  
for us to plan staff.

If you do not attend your booked sessions or you cancel after **Friday 24<sup>th</sup> March 2023**  
you will still be charged at the full price.

Any questions please do not hesitate to ask or call us on 07707319843.





One  
Tenth  
Human



RECOMMENDED  
FOR AGES  
**3-7**

# **CURIOUS INVESTIGATORS**

**"really great children's theatre"**

*Exeunt on We're Stuck!*

**TUE 4 APR, 2PM**  
**Quay Arts Centre**

Sea Street, Newport Harbour, Isle of Wight, PO30 2EF  
**Book your tickets: 01983 822490 [quayarts.org](http://quayarts.org)**



BackstageTrust



Supported using public funding by  
**ARTS COUNCIL  
ENGLAND**





Astra Recycling Ltd | Unit 30/30A Aston Road | Warrington | PO7 7XQ  
 Tel: 02392 177360 | [charley.francis@astrarecycling.co.uk](mailto:charley.francis@astrarecycling.co.uk) | [www.astrarecycling.co.uk](http://www.astrarecycling.co.uk)



Registered in England & Wales: 08474908

Following our amazing March for Ukraine campaign last year, where your overwhelming generosity allowed us to send 15 tons of aid over to refugees; several schools have been in contact to ask if we are doing something similar for Turkey and Syria.

Due to logistics, we cannot send aid to Syria and Turkey in the form of clothing and food etc. Most charities are requesting donations of money.

We thought a possible way to help would be if your school could organise a one-off textile collection with a view to raise money for the Turkey/ Syria earthquake appeal?

You can donate extra bags clothing and we can organise a separate collection. Monies raised will be paid directly to the school/ site to donate to your chosen charity.

**Collection will take place on Thursday 9th March, just over two weeks' time.**

**Your donations are greatly appreciated to help with worthy cause.**



## Privilege Seat Application Window – Academic Year 2022/2023

Dear Parent/Guardian

The dates for the privilege seat application window for academic year 2022 have been finalised. Should you wish to apply for a privilege seat for your child to use the school bus service you will need to apply from **9am on Tuesday 6<sup>th</sup> December 2022** Please note that the online form will be live until on or around 5<sup>th</sup> June 2023

Further information on the privilege seat process can be found online, here: <https://www.iwight.com/Council/OtherServices/School-Transport/Privilege-Seat-on-School-Transport>. Please also note the FAQs, Code of Good Practice and Ticket Terms and Conditions sections available via this webpage. If you scroll to the bottom of the above webpage you will see the bus services for which you can apply. **This information will be live from 9am on Tuesday 6<sup>th</sup> December 2022.** Should the service you require not be listed you will not be able to apply for that service at this time.

Do bear in mind that making an application for a privilege seat does not guarantee a seat on the school bus.

Privilege seat ticket prices are set costs as follows.

- Up to a full term £130.00
- Up to half a term £65.00
- Up to a full-term AM or PM only £65.00
- Up to half a term AM or PM only £32.50

Should you have any queries please contact the Transport Team at the Council via email: [transport.info@iow.gov.uk](mailto:transport.info@iow.gov.uk) or telephone: 823780.

### Important Points to Note

- Information on bus services that can be offered will be available on the website from **9am on Tuesday 6<sup>th</sup> December 2022**.
- We may not be able to provide an update on the number of seats available before the application window opens but please be aware seats availability will be very limited.
- Services available are listed at the bottom of the Privilege seat webpage
- There will be a strict payment deadline for making payment. Should you miss this deadline, the seat offered to your child will be offered to the next child on the waiting list (should one exist) and your application will be cancelled.
- Once applications have been processed by the Transport Team you will be able to see the status of your application online as well as make payment without having to contact the Council.

**All Islanders**  
CAN GET SUPPORT WITH THE

# COST OF LIVING

**01983 823134**  
[iow.gov.uk/costofliving](http://iow.gov.uk/costofliving)








ISLE OF WIGHT COUNCIL

ISLE OF WIGHT HELP WITH THE

# COST OF LIVING

**01983 823134**  
[iow.gov.uk/costofliving](http://iow.gov.uk/costofliving)

**General help and support**  
Citizens Advice IW can give free help with money issues and much more.  
☎ 0800 144 88 48 or Textphone on 18001 0800 144 8884  
🌐 [www.citizensadviceiw.org.uk](http://www.citizensadviceiw.org.uk)

**Debts and paying bills**  
Citizens Advice Money team.  
☎ 01983 823898 ext: 2825  
✉ [debtinquiries@iwcab.org.uk](mailto:debtinquiries@iwcab.org.uk)  
🌐 [www.citizensadviceiw.org.uk/money-advice-team](http://www.citizensadviceiw.org.uk/money-advice-team)

**Buying food**  
🌐 [www.iow.gov.uk/costofliving](http://www.iow.gov.uk/costofliving) and tap on 'food' for more information.  
Join a community pantry and for £5 a week, receive over £15 worth of food.  
☎ 01983 296592 East Cowes Community Pantry  
☎ 07961 959003 Ventnor Community Pantry  
☎ 01983 563732 Ryde Community Pantry

**Connect4communities**  
Support including food vouchers, getting weather appropriate clothing (directly with your school) and more.  
✉ [connect4communities@iow.gov.uk](mailto:connect4communities@iow.gov.uk)  
🌐 [www.connect4communities.org](http://www.connect4communities.org)









ISLE OF WIGHT COUNCIL

**Benefits**  
Check whether you are getting all the benefits you can.  
Citizens Advice Help to Claim line.  
☎ 0800 144 8444  
🌐 [www.gov.uk/benefits-calculators](http://www.gov.uk/benefits-calculators)

**Energy bills**  
The Footprint Trust give guidance on energy bills, efficiency and grants.  
☎ 01983 822282  
✉ [info@footprint-trust.co.uk](mailto:info@footprint-trust.co.uk)  
🌐 [www.footprint-trust.co.uk](http://www.footprint-trust.co.uk)

**Pension Credit**  
If you are of State Pension age you may be entitled to Pension Credit. If you get Pension Credit you can get other benefits.  
☎ 0800 99 1234 or Textphone on 0800 169 0133  
🌐 [www.gov.uk/pension-credit](http://www.gov.uk/pension-credit)

**Paying for broadband and mobile phone**  
Social tariffs are available if you're on a low income.  
🌐 [www.ofcom.org.uk/cheap-broadband](http://www.ofcom.org.uk/cheap-broadband)

**Feeling lonely**  
The Living Well and Early Help Partnership works on the Island to connect people.  
☎ 01983 240732  
✉ [reception@lweh.org.uk](mailto:reception@lweh.org.uk)  
🌐 [www.lweh.org.uk](http://www.lweh.org.uk)

**In a crisis**  
If you have no money for food, gas and electricity you may be able to get emergency help.  
☎ 01983 823859  
🌐 [www.iow.gov.uk/HelpThroughCrisis](http://www.iow.gov.uk/HelpThroughCrisis)

**Other useful contacts**  
🌐 [www.helpforhouseholds.gov.uk](http://www.helpforhouseholds.gov.uk)  
🌐 [www.islefindit.org.uk](http://www.islefindit.org.uk)  
🌐 [www.gov.uk/helpforhouseholds](http://www.gov.uk/helpforhouseholds)

#### Cost of living information from Isle of Wight Council

[www.iow.gov.uk/costofliving](http://www.iow.gov.uk/costofliving)  
01983 823134

#### General help and support

Citizens Advice IW can give free help with money issues and much more.  
0800 144 88 48 or Textphone on 18001 0800 144 8884  
[www.citizensadviceiw.org.uk](http://www.citizensadviceiw.org.uk)

#### Debts and paying bills

Citizens Advice Money team.  
01983 823898 ext: 2825  
[debtinquiries@iwcab.org.uk](mailto:debtinquiries@iwcab.org.uk)  
[www.citizensadviceiw.org.uk/money-advice-team](http://www.citizensadviceiw.org.uk/money-advice-team)

#### Buying food

[www.iow.gov.uk/costofliving](http://www.iow.gov.uk/costofliving) and tap on 'food' for more information.  
Join a community pantry and for £5 a week, receive over £15 worth of food.  
01983 296592 East Cowes Community Pantry  
07961 959003 Ventnor Community Pantry  
01983 563732 Ryde Community Pantry

#### Connect4communities

Support including food vouchers, getting weather appropriate clothing (directly with your school) and more.  
[connect4communities@iow.gov.uk](mailto:connect4communities@iow.gov.uk)  
[www.connect4communities.org](http://www.connect4communities.org)

#### Benefits

Check whether you are getting all the benefits you can.  
Citizens Advice Help to Claim line.  
0800 144 8444  
[www.gov.uk/benefits-calculators](http://www.gov.uk/benefits-calculators)

#### Energy bills

The Footprint Trust give guidance on energy bills, efficiency and getting grants.  
01983 822282  
[info@footprint-trust.co.uk](mailto:info@footprint-trust.co.uk)  
[www.footprint-trust.co.uk](http://www.footprint-trust.co.uk)

#### Pension Credit

If you are of State Pension age you may be entitled to Pension Credit. If you get Pension Credit you can get other benefits.  
0800 99 1234 or Textphone on 0800 169 0133  
[www.gov.uk/pension-credit](http://www.gov.uk/pension-credit)

#### Paying for broadband and mobile phone

Social tariffs are available if you're on a low income.  
[www.ofcom.org.uk/cheap-broadband](http://www.ofcom.org.uk/cheap-broadband)

#### Feeling lonely

The Living Well and Early Help Partnership works on the Island to connect people.  
01983 240732  
[reception@lweh.org.uk](mailto:reception@lweh.org.uk)  
[www.lweh.org.uk](http://www.lweh.org.uk)





For more information please go to

<https://www.hants.gov.uk/socialcareandhealth/childrenandfamilies/connectforcommunities>

<https://www.islefindit.org.uk/advice-pages/help-through-crisis>

Help Through Crisis (HTC) aims to assist Island residents who are in genuine hardship, enabling them to access help quickly. There is a limited fund to provide help with food, gas and electricity. This can only be offered to those in the most need and as a last resort. No cash can be given but help will be provided to find other sources of assistance. We will do our best to help but we cannot give assistance in all circumstances. If you would like to apply please complete the form or call (01983) 823859,

#### From the Isle of Wight NHS Trust

We are offering the following Children's COVID Vaccination Clinics for Years 5-11 and Years 12-15. Appointments must be booked in advance using the National Booking Service, we are unable to offer walk-ins.

Please note that these will take place in the Children's Outpatients Department, North Hospital, St Mary's and NOT the Hospital Vaccine Hub. Accessible parking is available in the North Car Park.

For information about eligibility and how to book your Child's vaccination, please use the online link below, you will need your child's NHS number:

<https://www.nhs.uk/conditions/coronavirus-covid-19/coronavirus-vaccination/book-coronavirus-vaccination/>

All vaccines offered will be the Pfizer (Comirnaty 10) for 5-11 years or Pfizer (Comirnaty 30) for 12-15 years.

#### Child Vaccine Doses Offered:

For children 5-11 years - 1<sup>st</sup> dose and 2<sup>nd</sup> dose only.

For children 12-15 years - 1<sup>st</sup> dose and 2<sup>nd</sup> dose.

A 3<sup>rd</sup> dose is offered if your child is at high risk because of a health condition or because of a weakened immune system, or living with someone who has a weakened immune system.

#### Children's Clinics in February:

Thursday 27 February 2023, 08:00 – 11:00

#### Children's Clinics in March:

Thursday 09 March 2023, 08:00 – 11:00

Thursday 30 March 2023, 08:00 – 11:00

Children aged over 16 who require a 1<sup>st</sup>, 2<sup>nd</sup> dose or eligible for a 3<sup>rd</sup> dose, are welcome to 'walk-in' to the St Mary's Hospital Vaccine Hub in South Block, opposite the Duck Pond, on Mondays AND Thursdays 07:40 – 13:00

For any other information regarding Children's vaccination clinics, please email the Hospital Vaccine Hub Team: [iownt.vaccine-hub@nhs.net](mailto:iownt.vaccine-hub@nhs.net)

## Celebrate International Women's Day

with Adult Community Learning (adults 19+), and bring a child over the age of 10yrs with you to our workshop morning, on Sunday 5 March 10am-12pm. Choose between weaving your own beautiful unique piece of wall art, using mixed media and personal items, or create a colourful keyring (heart, flower etc) and hopefully you'll never lose your keys again!

Workshops take place at The Learning Centre, Westridge, Ryde and cost £10/£5 concession per person (child pays £5). Booking is essential, to book an adult and child place please call 817280, or adults 19+ only can book via our website [www.iow.gov.uk/ACLcourses](http://www.iow.gov.uk/ACLcourses)

## INTERSCHOOL TEAM DRESSAGE

FRIDAY 24<sup>th</sup> March 2023

### Little Kennerley Farm, Godshill

By kind permission of Dawn and Hayley Webster



It will be run over four sections:

|                   |  |
|-------------------|--|
| Primary Schools   | BD Intro B or BD Prelim Test 2         |
| Secondary Schools | BD Prelim Test 13 or BD Novice Test 24 |

The entry fee is £8 per rider. Entries need to be sent to Karen Begley at Carisbrooke College. Payment by cheque, cash or bacs. Cheques need to be made payable to Medina College. Bacs payments to Medina College Fund Account, Sort code 30-95-99, Account number 33699968.

It is open to teams of 4 (with best three scores counting) and individuals.

Entries close on Friday 17<sup>th</sup> March. Times will be emailed to schools and put on the Isle of Wight Horse Community Facebook Page on Monday 20<sup>th</sup> March

A representative of the school will need to accompany the team and be responsible for them during the competition. Please make sure that your school has insurance that will cover extra curricular activities (including horse riding).

If you require any further information please contact Karen Begley at Carisbrooke College 524651 or karen.begley@iwef.org.uk

FRIDAY 21<sup>st</sup> April 2023

### Little Kennerley Farm, Godshill

By kind permission of Dawn and Hayley Webster



It will be run over four sections:

|                   |           |              |
|-------------------|-----------|--------------|
| Primary Schools   | Led/unled | 9" to 12"    |
|                   | Unled     | 18" to 2'    |
| Secondary Schools | Section A | 2'3" to 2'6" |
|                   | Section B | 2'6" to 2'9" |

We will be running under Pony Club rules:

- Knockdown 4 faults
- First disobedience 4 faults
- Second disobedience 8 faults
- Third disobedience Elimination
- Error of Course Elimination
- Fall of Horse or Rider Elimination

The entry fee is £8 per rider. Entries to be sent to Karen Begley at Carisbrooke College. Payment by cheque, cash or Bacs. Cheques need to be made payable to Medina College. Bacs payments to Medina College Fund Account, Sort code 30-95-99, Account number 33699968. Entries close on Friday 31<sup>st</sup> March. Times will be emailed to schools and put on the Isle of Wight Horse Community Facebook Page on Monday 17<sup>th</sup> April

It is open to teams of 4 (with best three scores counting) and individuals. It will be two rounds with a jump-off following straight on from the second round, with all competitors going forward to the jump-off section.

A representative of the school will need to accompany the team and be responsible for them during the competition. Please make sure that your school has insurance that will cover extra curricular activities (including horse riding).

If you require any further information please contact Karen Begley at Carisbrooke College 524651 or karen.begley@iwef.org.uk

## Schools Walk the Wight

with

 **Mountbatten**



**Sunday 14 May 2023**

Registration opens 1 March!



Registered with  
FUNDRAISING  
REGULATOR  
A registered charity no. 102906

We invite you to join us on

## PALM SUNDAY, 2nd April

for a procession starting from the Three Bishops car park at 10:00am (or join in along the way) for a walk around the village with a donkey (courtesy of the IW Donkey Sanctuary).

Route will go down the footpath to Wilberforce Road, up to Sirenia Close and back through the recreation ground.

We will finish at  
Brighstone & Shorwell Methodist Church  
for a service at 10:30am,  
or you can continue to St Marys Church  
for a service at 11:00am.





## Join us for All Stars at Ventnor CC

Steephill Rd, Ventnor, PO38 1UF



Open to 5-11 year olds

Tuesdays 4 - 4.45pm

Starting Tuesday 23rd May

Phone Ruth on 07917306984 for details or sign up online.

# PLAY JUNIOR RUGBY

Vectis Rugby club have spaces open in all age groups from U5 to U12

*Every Sunday at IWRFC in Wootton at 10am.*

First two sessions are free  
Email for more information

Email: [vectisrfccoaching@gmail.com](mailto:vectisrfccoaching@gmail.com)

[www.vectisrugby.co.uk](http://www.vectisrugby.co.uk)



Sessions are all delivered by experienced coaches with first aid qualifications and DBS Checks.

## CHILDREN'S SHOW SCHEDULE 2023

---

### SPRING SHOW

**Saturday 1st April**

Wilberforce Hall, Main Road, Brighstone  
1.30pm to 4.00pm Presentations at 4.00pm

---

### 125th BHS MARQUEE IN NEW SUMMER SHOW

**Saturday 15th July**

Recreation Field, New Road, Brighstone  
Marquee opens 1.30pm Presentations at 4.00pm

---

### AUTUMN SHOW

**Saturday 7th October**

Wilberforce Hall, Main Road, Brighstone  
1.30pm to 4.00pm Presentations at 4.00pm



**SPRING SHOW**

Please state your age on the entry form, then it will be taken into consideration.

- 72. A Painting or Drawing for King Charles's Coronation.
- 73. A driftwood model of a dinosaur.
- 74. 4 Fairy Cakes, made and decorated.
- 75. Floral art – An Easter Posy.
- 76. 4 Decorated Rich Tea Biscuits, Coronation Themed (judged on decoration only).
- 77. Handwriting:

God save our gracious King!  
 Long live our noble King!  
 God save the King!  
 Send him victorious,  
 Happy and glorious,  
 Long to reign over us,  
 God save the King.

**AUTUMN SHOW**

Please state your age on the entry form, then it will be taken into consideration.

- 118. A Christmas Card.
- 119. 4 Christmas or Halloween cup cakes made and decorated.
- 120. A driftwood reindeer.
- 121. My favourite pot plant, grown by entrant.
- 122. An Autumn painting or drawing A4 max.
- 123. A model made from Lego, no bigger than 30cm x 40cm
- 124. Handwriting:

Rain, rain go away,  
 Come again another day.  
 Rain, rain go away,  
 Little Johnny wants to play.

**SUMMER SHOW**

**CHILDREN'S CLASSES**

Prize money for children's classes: 1<sup>st</sup> - £1.50, 2<sup>nd</sup> - £1, 3<sup>rd</sup> - 50p. Your age must be displayed clearly, then it will be taken into consideration.

**Classes 156 and 163 must be arranged by the exhibitor on site without assistance.**

**For ages 9 and under:**

- 151. Something new from something old.
- 152. My pet - a painting/drawing A4 max.
- 153. My favourite "snapshot" (must be taken by entrant).
- 154. A creature made from a vegetable
- 155. A creature made from driftwood and shells.
- 156. Garden flowers in a teapot.
- 157. A miniature living garden (in a bowl or pot).
- 158. 4 decorated biscuits (judged on decoration only).
- 159. 4 pieces of flapjack, any variety.

**For ages 10 to 16**

- 160. A miniature scarecrow – maximum size 30 cm.
- 161. Still Life – a drawing or sketch.
- 162. My favourite "snapshot" (must be taken by entrant).
- 163. A miniature herb garden (in a bowl or pot).
- 164. A miniature building made from driftwood and shells.
- 165. A carrot cake.
- 166. 4 decorated fairy cakes.

**For all ages up to 16**

- 167. New class for 2023 – Grow a squash any variety.
- 168. Handwriting:  
 Incy, wincy spider climbed up the spout,  
 Down came the rain and washed the spider out,  
 Out came the sun and dried up all the rain,  
 And incy, wincy spider climbed up the spout again.

**CHILDREN'S ENTRY FORMS (ALL ENTRIES ARE FREE)**

**AUTUMN SHOW 2023**

Entry forms must reach the Show Secretary **no later than Wednesday prior to the show**. Please post your entry in the box at The Village Shop, Brighstone or hand to the Show Secretary at Bluebells, North Street, Brighstone.

NAME (BLOCK CAPITALS) \_\_\_\_\_ AGE \_\_\_\_\_  
 ADDRESS \_\_\_\_\_  
 PHONE NUMBER \_\_\_\_\_

Children's Classes

Please circle: 118 119 120 121 122 123 124

Number of entries \_\_\_\_\_



**SUMMER SHOW 2023**

Entry forms must reach the Show Secretary **no later than Wednesday prior to the show**. Please post your entry in the box at The Village Shop, Brighstone or hand to the Show Secretary at Bluebells, North Street, Brighstone.

NAME (BLOCK CAPITALS) \_\_\_\_\_ AGE \_\_\_\_\_  
 ADDRESS \_\_\_\_\_  
 PHONE NUMBER \_\_\_\_\_

Children's Classes

Please circle: 151 152 153 154 155 156 157 158 159

160 161 162 163 164 165 166 167 168

Number of entries \_\_\_\_\_



**SPRING SHOW 2023**

Entry forms must reach the Show Secretary **no later than Wednesday prior to the show**. Please post your entry in the box at The Village Shop, Brighstone or hand to the Show Secretary at Bluebells, North Street, Brighstone.

NAME (BLOCK CAPITALS) \_\_\_\_\_ AGE \_\_\_\_\_  
 ADDRESS \_\_\_\_\_  
 PHONE NUMBER \_\_\_\_\_

Children's Classes

Please circle: 72 73 74 75 76 77

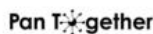
Number of entries \_\_\_\_\_



## What is the Living Well & Early Help Service?

We are focussed on identifying and providing support for people before they reach crisis and working with communities to build capacity to provide that support

Working in Partnership to reach all communities of the Isle of Wight



FOOTBALL 4 ALL PROJECT

We focus on the individual - on their strengths, passions and capabilities - building on their existing support networks, family and friends within their community



LIVING WELL & EARLY HELP 5 KEY PRINCIPLES

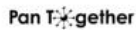
- 1 Community
- 2 Resilience
- 3 Relationships
- 4 Person Centered
- 5 Partnership



ASPIRE WOODWORK GROUP MAKING BAT BOXES



We will support people to look for practical solutions wherever possible and focus on what the person can do for themselves using their skills and experience rather than automatically looking for a service response.



CRAFTERNOON SESSION

At the community level, the service will strengthen partnerships between local organisations involved in community wellbeing, including parish and town councils, local community organisations and Island-wide organisations (statutory and voluntary) that operate at local levels.

The aim is to establish semi-autonomous community 'hubs', similar to those already existing in areas like Ryde, West Wight, Ventnor and Pan, throughout the Island. The nature of the hubs will vary, depending on the needs and resources of each area.

EVERYONE HAS THEIR OWN STRENGTHS, PASSIONS AND CAPABILITIES

## BUILDING STRONG COMMUNITIES

We promote and encourage connections, developments and contributions by individuals and the community. By spending time identifying the strengths, passions and capabilities of individuals, services and places we support communities to help themselves and create local solutions.

Pan Together providing Christmas Lunch



Ventnor Community Shed

Stepping Stones Homelessness prevention program



Our Place Mindfulness Coloring

### INDIVIDUALS - EVERYONE HAS STRENGTHS, PASSIONS & CAPABILITIES.

Everyone within our communities has their own skills, knowledge and passions. Living Well & Early Help identifies, encourages and nurtures individuals to utilise them. Deficit approach define communities and individuals in negative terms. An Asset approach accentuates positive capability to identify problems and activate solutions.

### SERVICES - PEOPLE ORGANISED AROUND ASSETS.

Services are generally professionals or paid services who are structurally organised. They include government agencies and private business, as well as schools, etc. They can all be valuable resources. The assets of these institutions help the community capture valuable resources and establish a sense of civic responsibility.

### PLACE - PEOPLE LIVE WHERE THEY LIVE FOR A REASON.

Land, buildings, heritage, public and green spaces are all examples of assets of the community. Individuals tend to be in a specific place for a specific reason. The people living in a community are most likely to know what its strengths are and how to utilise them.

### CONNECTION - PEOPLE SUPPORTING PEOPLE.

Small informal groups of people, such as clubs, groups and common interest activities are critical to the delivery of the Living Well and Early Help Service. They don't need complicated processes. They are just coming together around a common interest of their individual choice.

### VISIBILITY - BEING PART OF THE COMMUNITY.

The Living Well & Early Help workers are based within the community working in agile ways within defined localities finding spaces within community hubs, libraries, cafes etc. People should be able to approach workers individually as well as being referred in by any person or service. The Living Well & Early Help service supports people to develop their own solutions and ways of achieving their best possible lives, drawing on family and community resources, before considering commissioned or statutory services. Living Well and Early Help workers invest time in building relationships and understanding what a person's idea of their best life is. It also helps people to develop and build their own capacity and connections, so that they can stay strong and independent.

### DEVELOPMENT - INDIVIDUALS CONNECT INTO A COMMUNITY.

Living Well and Early Help recognises that the exchange between people sharing their passion, gifts, skills and assets creates connections, and these connections are a vital asset to the community. It takes time to find out about individuals; this is normally done through building relationships, person by person. The social relationships, networks and trust form the social capital of a community. The Living Well and Early Help service knows the value of these assets and the importance of building relationships to increase the social capital within each unique community.

WAVES OF WELLNESS - SUICIDE PREVENTION PROJECT



reception@lweh.org.uk 01983 240732