

The Buzz



Brighstone C.E.
Primary School

10th March 2023



Learning and Achieving Through Love,
Courage and Respect

Dear parents, carers and children,



I would like to take this opportunity to say a HUGE thank you for your amazing generosity on this fundraising day for **Solomiya** and her family. Everyone wore blue and yellow to raise money to help the family pay for Solomiya's medical treatment for her kidney disease. So far we have raised over £600, which is absolutely incredible! We are also holding a 'Guess the Name of the Dog' competition, in which you can pay £1 to take part. All proceeds will be added to the donations. You



will find it in the school foyer. Thank you to Reece and Mia for their very kind donation of the huge teddy dog! (Any further donations can be brought to the school office.) During Golden Worship this morning, we watched a video message from Solomiya who was also wearing her national colours along with us (see the video on our Facebook page). She and her family send all their thanks and are so very grateful for all your support.



Next Friday (17th) sees **Red Nose Day**. In return for a small donation, children and staff are asked to wear red and have silly hair. How silly can you make it? Bigger? Brighter? Scarier? Funnier? I look forward to seeing what you come up with!



Today, some members of the **EARA group** from St George's Special School visited us to meet with our EARA group. They have just set up their group and wanted to find out what we have been up to so far. They loved our Cosy Cabin (which is almost ready for its grand opening) and finding out about our purchasing of a wider range of diverse books and the setting up of the friendship stops, among other things. It was a great opportunity for the young people from both schools to collaborate with each other, and I would like to thank our EARA group for their confidence in articulately sharing their thoughts and ideas, and for making our visitors feel very welcome. Thank you to Riley, Robbie, James, Mary and Liam from St George's, as well as to their teachers, Heather and Sinead.

Next week sees the final two **strike days** taken by the NEU (Wednesday 15th and Thursday 16th March), and you will have received a letter today about it. At the time of writing, I don't have the full information about the plans for Brighstone as teachers are not required to inform schools until nearer the time, and a few are still making that very difficult decision. Classes will remain open for those teachers who are members of different unions or who have made the difficult decision to not strike. I will inform you nearer the time of the finalised plans, and I thank you for your understanding. We support all our teachers whatever decision is made as they do their bit to support education and funding in schools.

In preparation for Easter, the Messy Church team are holding a **poster competition** with the theme The Easter Story. Children are asked to paint/draw an A4 picture of what it means, and the winning one(s) will be put on the notice boards at both the Methodist Church and St Mary's. Please hand in your entries to school by Friday 24th March so we can pass them on.

Last Friday and today we held a **second-hand book fair** so we can make space for new books and use the proceeds to go towards the purchase of these new books. We have made around £25 towards this, so thank you very much.

I hope you all have a lovely weekend, and I look forward to seeing you on Monday.



With best wishes, Mrs Lennon and the Brighstone Team

Collective Worship - Forgiveness

This week's Collective Worship theme is **Forgiveness: Forgiving others as God has forgiven you**

We heard two stories about forgiveness and generosity. The first one was The Unforgiving Servant and the second was a similar story set nowadays, acted out by some of our KS2 children.



If you forgive others the wrongs they have done to you, Your Father in Heaven will also forgive you.



How can you show forgiveness to others?

A Forgiveness Prayer



Lord Jesus,
Help us to be ready to show forgiveness to others,
As you are ready to show forgiveness to us.
Amen

"Just as the Lord has forgiven you, so you must also forgive others."

Colossians 3.13

School Dinners

Children in **Year R, 1 and 2** are entitled to a 'universal' **free** school meal everyday.

Children in Years 3-6 are charged at **£2.55** per day.

Baguettes now available on Tuesdays and Thursdays instead of JPs (ham, cheese or tuna)

Week 2	Monday	Tuesday	Wednesday	Thursday	Friday
Option 1	Pizza	Sausage and Mash	Roast Gammon	Chicken Curry	Fish Fingers
Option 2	Tomato pasta	Veggie sausage	Vegetable pastry roll	Tomato pasta	Quorn dippers
Dessert	Crispy Bar	Shortbread	Ice Cream	Apple Crumble	Frozen Yogurt

Poetry Corner



**Kind hearts are the gardens,
Kind words are the roots,
Kind thoughts are the flowers,
Kind deeds are the fruits.**

**Take care of your garden
And keep out the weeds;
Fill it with sunshine,
Kind words and kind deeds.**

-H.W. Longfellow



Grammar and Spelling Matters

Each week we will include a mini grammar or spelling lesson so you know what your children are learning!

Idioms

An idiom is a word or phrase that means something completely different from the word or words it is made up of. The meanings of idioms have little or no relation to the literal meanings of their component parts, but they make sense because they are familiar expressions. Different regions have different idioms.

COMMON ENGLISH IDIOMS



Can you think of any others?

Safeguarding

If you have a concern about a child you can call the police on 999 if you feel they are at risk of immediate harm

Contact us: safeguarding@brighstoneprimary.org.uk

Speak with our DSL Mrs Jones in the school office

You can contact the NSPCC:

Contact the NSPCC Helpline

If you have any concerns at all about a child's safety or wellbeing, don't hesitate to contact us.

Call us or email help@nspcc.org.uk

0808 800 5000

Find out more

Or call children's services 0300 300 0117

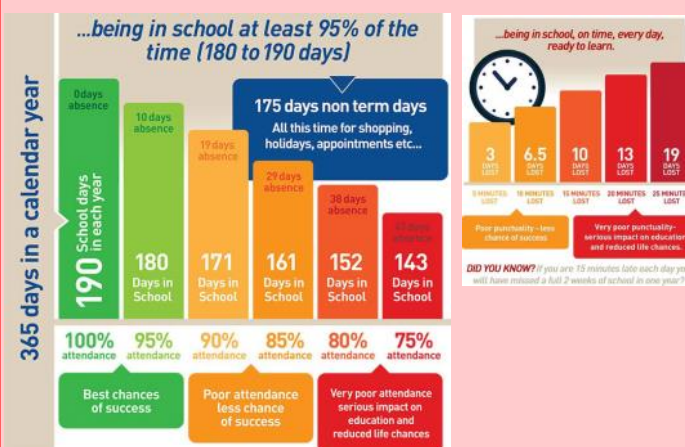
Attendance Matters!

Week Commencing 6th March

Whole School attendance target: **96.5%**

Actual Attendance: **94.31%**

Late marks this week: **3**



Golden Book

Bumble Bee	Max - for a really positive attitude and learning behaviours Ruby - for always rising to challenges in her learning and applying skills in various areas of the curriculum Zara - for being brave during the quizzes and applying her learning/showing her workings within her maths quiz Bethan - for rising to the challenge of being in English and using her phonics when she is writing Theo F - for independent maths work on comparing measures Tristan - for using the phonics chart to be able to explore different sounds for 'ce' and spelling 'voice' correctly, applying his learning
Honey Bee	Grover - for showing a love of learning and enthusiasm in History. Martha - for showing all three school values during Science. Allina - for showing a love of learning and respect during guided reading.
Ivy Bee	Lucy, Charlie, Nico, Arya, Jude - for providing help and support to Mrs Denness when setting up for Science.
Bee-Haviour	Toby - for always being a good friend and role model by showing kindness to others.



Love

Courage

Respect

Community News

Coronation Literacy Project

The Lord Lieutenant is inviting all aspirational young poets and writers to submit a composition to celebrate the King's Coronation on May 6th. This invitation is open to all young people aged 18 and under.

The entry judged to be the most appropriate and inspirational will be chosen to be read out (by the author, if willing) as a reading at The Isle of Wight's own Coronation Celebration Service on May 7th. In addition, a booklet of all suitable compositions will be produced as a lasting commemoration of the Coronation.

The composition should be no less than 50 and no more than 250 words long and can be a poem or prose. It should have the Coronation as its main subject and should reflect both youth and age.

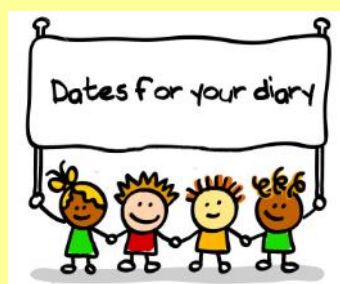
If you are interested, please email the school office for a Composition Entry Form.

The closing date is 31st March. Please hand all entries into the school office.



Key dates this year

- Monday 13th March: Parents Evening
- Tuesday 14th March: Parents Evening
- Friday 17th March: Red Nose Day (wear red and silly hair)
- Wednesday 29th March: Messy Church (KS1 morning; KS2 afternoon). Details to follow nearer the time.
- Thursday 30th March: Easter service at 1.45pm (further details to follow nearer the time)
- Friday 31st March: Last day of term
- Monday 3rd April - Friday 14th April: Easter holidays
- Monday 8th May: Extra Bank Holiday (due to the King's Coronation)
- Tuesday 9th—Friday 12th May: Y6 SATs
- Sunday 14th May: Walk the Wight
- Tuesday 16th May: Royal Coronation Junior Prom at Osborne House (details to follow nearer the time)
- Monday 29th May - Friday 2nd June: Half term
- Monday 19th—Wednesday 21st June: Y4 Kingswood residential
- Thursday 20th July: School closed for staff development day
- Friday 21st July: School closed for staff development day



Brighstone School Association

MOTHER'S DAY

Gift
£2.50 each

Special

The children are being given the opportunity to purchase a special gift for a loved one for Mothers Day

Please NB all gifts are the same - colour may vary

If you would like your child to purchase a gift, please see email sent home and return form/money in a named envelope or order through our pta events page by 10th March

pta-events.co.uk/brighstoneschoolassociation



Brighstone School Association

YOUR HELP IS NEEDED
**Sunday
18th June**

We have the opportunity to run the Tea/cake stall at the garden opening @ Northcourt. This is a great fundraiser for us, and we have raised over 1K before.

However, we know the date clashes with the festival.

If you can commit to helping run the teas on this date can you let the BSA know by 3rd March.

If we can not get enough helpers we will unfortunately have to turn down this opportunity.

YOUR SCHOOL LOTTERY

- 1 JOIN OUR LOTTERY**
- 2 BOOST SCHOOL FUNDS**
- 3 WIN CASH PRIZES**

It's As Easy As

- Tickets cost just £1 a week
- The easy way to help us raise funds
- Every week, one lucky winner from our school will win a cash prize!
- Also a chance to win the £25k jackpot

To start supporting, visit:
yourschoollottery.co.uk
and search for: Brighstone School

Supporters must be 18 years of age or older



BSA Mother's Day Return Slip

Please return this slip in a named envelope with the correct money by the end of school on Friday 10th March.

If you would like to pay via card, please log into pta-events.co.uk/brighstoneschoolassociation

Childs Name	
Childs Class	

Number of gifts	
Amount enclosed	

Gifts will come home with you child on Friday 17th March.

Thank you for your continued support.



The Living Well and Early Help Service is a Council and NHS funded project specifically set up to support people on the Isle of Wight to stay safe, strong, well, resilient, in control, independent and connected with their local community.

We are focussed on identifying and providing support for people before they reach crisis and working with communities to build capacity to provide that support.

We will support people to look for practical solutions wherever possible and focus on what the person can do for themselves using their skills and experience rather than automatically looking for a service response.

By spending time identifying these strengths, passions and capabilities of individuals, services and places, we support communities to help themselves and create local solutions.

This service will be available as a drop in from a mobile van situated in the car park at the end of Warnes Lane on the following days:

- Wednesday 29th March 2023 from 13:30-14:45 and
- Tuesday 25th April 2023 from 13:30-14:45

ADULT COMMUNITY LEARNING






ALL COURSES ARE FOR ADULTS 19+

City of Wight Approved Learning Provider | matrix | Education & Skills Funding Agency | Ofsted Good Provider

For further information or to book a place on any /all of these sessions please contact:
info@thecrossley.co.uk or phone 01983 861164

90 Minutes to Family Calm Series

Join our **FREE** (fully funded) online classes! – **Join one or join them all...**

	BRAIN TRAINING FOR CALM	– 20th February	
	TAMING THE EMOTIONS MONSTER	– 27th February	
	SENSIBLE ABOUT OUR SENSES	– 6th March	
		* no session 13th March	
	BUCKET FILLING FOR SELF-ESTEEM	– 20th March	
	RELAXING OUR KIDS	– 27th March	

February—March 2023
Monday mornings
9:30-11:00

Booking & enrolment required to secure a place on any or all these sessions.
*enrolment required **just once** (for any number of sessions) per academic year



Holiday Club will be open to all children aged.
9 months - 11 years.

If you wish your child to attend Holiday Club at
Brightstone Preschool, please fill in the form below
with days and times required.

Our opening times are 7.30 am until 5.30 pm.

Prices:

9-12 Months €7.00 an hour

12 Months - 2 Years €6.20 an hour

2 - 3 Years €6.00 an hour

3 Years - School Age €5.50 an hour

Payment will be due in advance.

Please enter the hours you wish your child to attend on each day and return via email.

(brightstonepreschool@gmail.com) or a printed copy to Rosanna ASAP.

<u>Monday</u> 3 rd April 2023	<u>Tuesday</u> 4 th April 2023	<u>Wednesday</u> 5 th April 2023	<u>Thursday</u> 6 th April 2023	<u>Friday</u> 7 th April 2023
				<u>CLOSED</u>
<u>Monday</u> 10 th April 2023	<u>Tuesday</u> 11 th April 2023	<u>Wednesday</u> 12 th April 2023	<u>Thursday</u> 13 th April 2023	<u>Friday</u> 14 th April 2023
<u>CLOSED</u>				

Child's name 1:	DOB:	Any Allergies:
Child's name 2:	DOB:	Any Allergies:

30 hours stretched entitlement:	YES / NO
Parent or Carers Name:	
Contact No 1:	
Contact No 2:	
Email Address:	

Booking in: This is subject to demand, please book in by **Friday 24th March 2023** in order.
for us to plan staff.

If you do not attend your booked sessions or you cancel after **Friday 24th March 2023**
you will still be charged at the full price.

Any questions please do not hesitate to ask or call us on 07707319843.



One
Tenth
Human



RECOMMENDED
FOR AGES
3-7

CURIOUS INVESTIGATORS

"really great children's theatre"

Exeunt on We're Stuck!

TUE 4 APR, 2PM
Quay Arts Centre

Sea Street, Newport Harbour, Isle of Wight, PO30 2EF
Book your tickets: 01983 822490 quayarts.org



BackstageTrust



Supported using public funding by
**ARTS COUNCIL
ENGLAND**

All Islanders
CAN GET SUPPORT WITH THE
COST OF LIVING

01983 823134
iow.gov.uk/costofliving








ISLE OF WIGHT COUNCIL

ISLE OF WIGHT HELP WITH THE
COST OF LIVING

01983 823134
iow.gov.uk/costofliving

General help and support
Citizens Advice IW can give free help with money issues and much more.
☎ 0800 144 88 48 or Textphone on 18001 0800 144 8884
🌐 www.citizensadviceiw.org.uk

Debts and paying bills
Citizens Advice Money team.
☎ 01983 823898 ext: 2825
✉ debtinquiries@iwcab.org.uk
🌐 www.citizensadviceiw.org.uk/money-advice-team

Buying food
🌐 www.iow.gov.uk/costofliving and tap on 'food' for more information.
Join a community pantry and for £5 a week, receive over £15 worth of food.
☎ 01983 296592 East Cowes Community Pantry
☎ 07961 959003 Ventnor Community Pantry
☎ 01983 563732 Ryde Community Pantry

Connect4communities
Support including food vouchers, getting weather appropriate clothing (directly with your school) and more.
✉ connect4communities@iow.gov.uk
🌐 www.connect4communities.org









ISLE OF WIGHT COUNCIL

Benefits
Check whether you are getting all the benefits you can.
Citizens Advice Help to Claim line.
☎ 0800 144 8444
🌐 www.gov.uk/benefits-calculators

Energy bills
The Footprint Trust give guidance on energy bills, efficiency and grants.
☎ 01983 822282
✉ info@footprint-trust.co.uk
🌐 www.footprint-trust.co.uk

Pension Credit
If you are of State Pension age you may be entitled to Pension Credit. If you get Pension Credit you can get other benefits.
☎ 0800 99 1234 or Textphone on 0800 169 0133
🌐 www.gov.uk/pension-credit

Paying for broadband and mobile phone
Social tariffs are available if you're on a low income.
🌐 www.ofcom.org.uk/cheap-broadband

Feeling lonely
The Living Well and Early Help Partnership works on the Island to connect people.
☎ 01983 240732
✉ reception@lweh.org.uk
🌐 www.lweh.org.uk

In a crisis
If you have no money for food, gas and electricity you may be able to get emergency help.
☎ 01983 823859
🌐 www.iow.gov.uk/HelpThroughCrisis

Other useful contacts
🌐 www.helpforhouseholds.gov.uk
🌐 www.islefindit.org.uk
🌐 www.gov.uk/helpforhouseholds

Cost of living information from Isle of Wight Council
www.iow.gov.uk/costofliving
01983 823134

General help and support
Citizens Advice IW can give free help with money issues and much more.
0800 144 88 48 or Textphone on 18001 0800 144 8884
www.citizensadviceiw.org.uk

Debts and paying bills
Citizens Advice Money team.
01983 823898 ext: 2825
debtinquiries@iwcab.org.uk
www.citizensadviceiw.org.uk/money-advice-team

Buying food
www.iow.gov.uk/costofliving and tap on 'food' for more information.
Join a community pantry and for £5 a week, receive over £15 worth of food.
01983 296592 East Cowes Community Pantry
07961 959003 Ventnor Community Pantry
01983 563732 Ryde Community Pantry

Connect4communities
Support including food vouchers, getting weather appropriate clothing (directly with your school) and more.
connect4communities@iow.gov.uk
www.connect4communities.org

Benefits
Check whether you are getting all the benefits you can.
Citizens Advice Help to Claim line.
0800 144 8444
www.gov.uk/benefits-calculators

Energy bills
The Footprint Trust give guidance on energy bills, efficiency and getting grants.
01983 822282
info@footprint-trust.co.uk
www.footprint-trust.co.uk

Pension Credit
If you are of State Pension age you may be entitled to Pension Credit. If you get Pension Credit you can get other benefits.
0800 99 1234 or Textphone on 0800 169 0133
www.gov.uk/pension-credit

Paying for broadband and mobile phone
Social tariffs are available if you're on a low income.
www.ofcom.org.uk/cheap-broadband

Feeling lonely
The Living Well and Early Help Partnership works on the Island to connect people.
01983 240732
reception@lweh.org.uk
www.lweh.org.uk



For more information please go to

<https://www.hants.gov.uk/socialcareandhealth/childrenandfamilies/connectforcommunities>

<https://www.islefindit.org.uk/advice-pages/help-through-crisis>

Help Through Crisis (HTC) aims to assist Island residents who are in genuine hardship, enabling them to access help quickly. There is a limited fund to provide help with food, gas and electricity. This can only be offered to those in the most need and as a last resort. No cash can be given but help will be provided to find other sources of assistance. We will do our best to help but we cannot give assistance in all circumstances. If you would like to apply please complete the form or call (01983) 823859,

From the Isle of Wight NHS Trust

We are offering the following Children's COVID Vaccination Clinics for Years 5-11 and Years 12-15. Appointments must be booked in advance using the National Booking Service, we are unable to offer walk-ins.

Please note that these will take place in the **Children's Outpatients Department, North Hospital, St Mary's** and NOT the Hospital Vaccine Hub. Accessible parking is available in the North Car Park.

For information about eligibility and how to book your Child's vaccination, please use the online link below, you will need your child's NHS number:

<https://www.nhs.uk/conditions/coronavirus-covid-19/coronavirus-vaccination/book-coronavirus-vaccination/>

All vaccines offered will be the Pfizer (Comirnaty 10) for 5-11 years or Pfizer (Comirnaty 30) for 12-15 years.

Child Vaccine Doses Offered:

For children 5-11 years - 1st dose and 2nd dose only.

For children 12-15 years - 1st dose and 2nd dose.

A 3rd dose is offered if your child is at high risk because of a health condition or because of a weakened immune system, or living with someone who has a weakened immune system.

Children's Clinics in February:

Thursday 27 February 2023, 08:00 – 11:00

Children's Clinics in March:

Thursday 09 March 2023, 08:00 – 11:00

Thursday 30 March 2023, 08:00 – 11:00

Children aged over 16 who require a 1st, 2nd dose or eligible for a 3rd dose, are welcome to 'walk-in' to the St Mary's Hospital Vaccine Hub in South Block, opposite the Duck Pond, on Mondays AND Thursdays 07:40 – 13:00

For any other information regarding Children's vaccination clinics, please email the Hospital Vaccine Hub Team: iownt.vaccine-hub@nhs.net

INTERSCHOOL TEAM DRESSAGE

FRIDAY 24th March 2023

Little Kennerley Farm, Godshill

By kind permission of Dawn and Hayley Webster



It will be run over four sections:

Primary Schools	BD Intro B or BD Prelim Test 2
Secondary Schools	BD Prelim Test 13 or BD Novice Test 24

The entry fee is £8 per rider. Entries need to be sent to Karen Begley at Carisbrooke College. Payment by cheque, cash or bacs. Cheques need to be made payable to Medina College. Bacs payments to Medina College Fund Account, Sort code 30-95-99, Account number 33699968.

It is open to teams of 4 (with best three scores counting) and individuals.

Entries close on Friday 17th March. Times will be emailed to schools and put on the Isle of Wight Horse Community Facebook Page on Monday 20th March

A representative of the school will need to accompany the team and be responsible for them during the competition. Please make sure that your school has insurance that will cover extra curricular activities (including horse riding).

If you require any further information please contact Karen Begley at Carisbrooke College 524651 or karen.begley@iwef.org.uk

FRIDAY 21st April 2023

Little Kennerley Farm, Godshill

By kind permission of Dawn and Hayley Webster



It will be run over four sections:

Primary Schools	Led/unled	9" to 12"
	Unled	18" to 2'
Secondary Schools	Section A	2'3" to 2'6"
	Section B	2'6" to 2'9"

We will be running under Pony Club rules:

- Knockdown 4 faults
- First disobedience 4 faults
- Second disobedience 8 faults
- Third disobedience Elimination
- Error of Course Elimination
- Fall of Horse or Rider Elimination

The entry fee is £8 per rider. Entries to be sent to Karen Begley at Carisbrooke College. Payment by cheque, cash or Bacs. Cheques need to be made payable to Medina College. Bacs payments to Medina College Fund Account, Sort code 30-95-99, Account number 33699968. Entries close on Friday 31st March. Times will be emailed to schools and put on the Isle of Wight Horse Community Facebook Page on Monday 17th April

It is open to teams of 4 (with best three scores counting) and individuals. It will be two rounds with a jump-off following straight on from the second round, with all competitors going forward to the jump-off section.

A representative of the school will need to accompany the team and be responsible for them during the competition. Please make sure that your school has insurance that will cover extra curricular activities (including horse riding).

If you require any further information please contact Karen Begley at Carisbrooke College 524651 or karen.begley@iwef.org.uk

Schools Walk the Wight

with

 **Mountbatten**



Sunday 14 May 2023

Registration opens 1 March!



Registered with
FUNDRAISING
REGULATOR
A registered charity no. 102808

We invite you to join us on

PALM SUNDAY, 2nd April

for a procession starting from the Three Bishops car park at 10:00am (or join in along the way) for a walk around the village with a donkey (courtesy of the IW Donkey Sanctuary).

Route will go down the footpath to Wilberforce Road, up to Sirenia Close and back through the recreation ground.

We will finish at
Brighstone & Shorwell Methodist Church
for a service at 10:30am,
or you can continue to St Marys Church
for a service at 11:00am.



Join us for All Stars at Ventnor CC

Steephill Rd, Ventnor, PO38 1UF



Open to 5-11 year olds

Tuesdays 4 - 4.45pm

Starting Tuesday 23rd May

Phone Ruth on 07917306984 for details or sign up online.



GLOBE FIT KIDS PRESENTS...

EASTER KIDS CLUB EXTRAVAGANZA!

3RD, 4TH, 5TH, 6TH APRIL
9AM - 4PM
£28 EARLYBIRD
£32 REGULAR PRICE
(INCLUDES LUNCH)
HAF - FREE FOR FSM
CHILDREN

WARREN FARM
TOTLAND BAY

www.globefit.co.uk

Sports & Team Games, Scavenger Hunt,
Crafts, Learning about the animals that
reside on the farm and MORE!



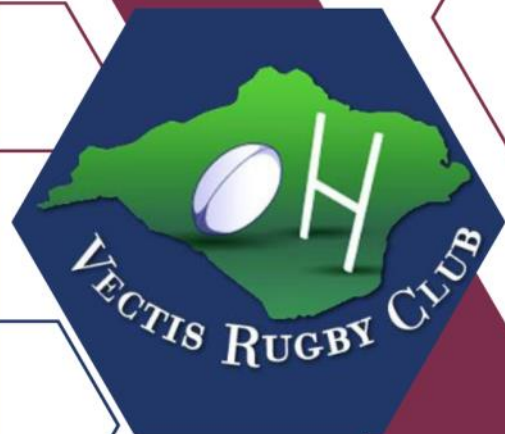
PLAY JUNIOR RUGBY

Vectis Rugby club have spaces open in all age groups from U5 to U12

Every Sunday at IWRFC in Wootton at 10am.

First two sessions are free
Email for more information

Email: vectisrfccoaching@gmail.com
www.vectisrugby.co.uk



Sessions are all delivered by experienced coaches with first aid qualifications and DBS Checks.

CHILDREN'S SHOW SCHEDULE 2023

SPRING SHOW

Saturday 1st April

Wilberforce Hall, Main Road, Brighstone
1.30pm to 4.00pm Presentations at 4.00pm

125th BHS MARQUEE IN NEW SUMMER SHOW

Saturday 15th July

Recreation Field, New Road, Brighstone
Marquee opens 1.30pm Presentations at 4.00pm

AUTUMN SHOW

Saturday 7th October

Wilberforce Hall, Main Road, Brighstone
1.30pm to 4.00pm Presentations at 4.00pm

SPRING SHOW

Please state your age on the entry form, then it will be taken into consideration.

- 72. A Painting or Drawing for King Charles's Coronation.
- 73. A driftwood model of a dinosaur.
- 74. 4 Fairy Cakes, made and decorated.
- 75. Floral art – An Easter Posy.
- 76. 4 Decorated Rich Tea Biscuits, Coronation Themed (judged on decoration only).
- 77. Handwriting:

God save our gracious King!
 Long live our noble King!
 God save the King!
 Send him victorious,
 Happy and glorious,
 Long to reign over us,
 God save the King.

AUTUMN SHOW

Please state your age on the entry form, then it will be taken into consideration.

- 118. A Christmas Card.
- 119. 4 Christmas or Halloween cup cakes made and decorated.
- 120. A driftwood reindeer.
- 121. My favourite pot plant, grown by entrant.
- 122. An Autumn painting or drawing A4 max.
- 123. A model made from Lego, no bigger than 30cm x 40cm
- 124. Handwriting:

Rain, rain go away,
 Come again another day.
 Rain, rain go away,
 Little Johnny wants to play.

SUMMER SHOW

CHILDREN'S CLASSES

Prize money for children's classes: 1st - £1.50, 2nd - £1, 3rd - 50p. Your age must be displayed clearly, then it will be taken into consideration.

Classes 156 and 163 must be arranged by the exhibitor on site without assistance.

For ages 9 and under:

- 151. Something new from something old.
- 152. My pet - a painting/drawing A4 max.
- 153. My favourite "snapshot" (must be taken by entrant).
- 154. A creature made from a vegetable
- 155. A creature made from driftwood and shells.
- 156. Garden flowers in a teapot.
- 157. A miniature living garden (in a bowl or pot).
- 158. 4 decorated biscuits (judged on decoration only).
- 159. 4 pieces of flapjack, any variety.

For ages 10 to 16

- 160. A miniature scarecrow – maximum size 30 cm.
- 161. Still Life – a drawing or sketch.
- 162. My favourite "snapshot" (must be taken by entrant).
- 163. A miniature herb garden (in a bowl or pot).
- 164. A miniature building made from driftwood and shells.
- 165. A carrot cake.
- 166. 4 decorated fairy cakes.

For all ages up to 16

- 167. New class for 2023 – Grow a squash any variety.
- 168. Handwriting:
 Incy, wincy spider climbed up the spout,
 Down came the rain and washed the spider out,
 Out came the sun and dried up all the rain,
 And incy, wincy spider climbed up the spout again.

CHILDREN'S ENTRY FORMS (ALL ENTRIES ARE FREE)

AUTUMN SHOW 2023

Entry forms must reach the Show Secretary **no later than Wednesday prior to the show**. Please post your entry in the box at The Village Shop, Brighstone or hand to the Show Secretary at Bluebells, North Street, Brighstone.

NAME (BLOCK CAPITALS) _____ AGE _____
 ADDRESS _____
 PHONE NUMBER _____

Children's Classes

Please circle: 118 119 120 121 122 123 124

Number of entries _____

✂️*****

SUMMER SHOW 2023

Entry forms must reach the Show Secretary **no later than Wednesday prior to the show**. Please post your entry in the box at The Village Shop, Brighstone or hand to the Show Secretary at Bluebells, North Street, Brighstone.

NAME (BLOCK CAPITALS) _____ AGE _____
 ADDRESS _____
 PHONE NUMBER _____

Children's Classes

Please circle: 151 152 153 154 155 156 157 158 159

160 161 162 163 164 165 166 167 168

Number of entries _____

✂️*****

SPRING SHOW 2023

Entry forms must reach the Show Secretary **no later than Wednesday prior to the show**. Please post your entry in the box at The Village Shop, Brighstone or hand to the Show Secretary at Bluebells, North Street, Brighstone.

NAME (BLOCK CAPITALS) _____ AGE _____
 ADDRESS _____
 PHONE NUMBER _____

Children's Classes

Please circle: 72 73 74 75 76 77

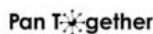
Number of entries _____



What is the Living Well & Early Help Service?

We are focussed on identifying and providing support for people before they reach crisis and working with communities to build capacity to provide that support

Working in Partnership to reach all communities of the Isle of Wight



FOOTBALL 4 ALL PROJECT

We focus on the individual - on their strengths, passions and capabilities - building on their existing support networks, family and friends within their community



LIVING WELL & EARLY HELP 5 KEY PRINCIPLES

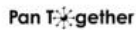
- 1 Community
- 2 Resilience
- 3 Relationships
- 4 Person Centered
- 5 Partnership



ASPIRE WOODWORK GROUP MAKING BAT BOXES



We will support people to look for practical solutions wherever possible and focus on what the person can do for themselves using their skills and experience rather than automatically looking for a service response.



CRAFTERNOON SESSION

At the community level, the service will strengthen partnerships between local organisations involved in community wellbeing, including parish and town councils, local community organisations and Island-wide organisations (statutory and voluntary) that operate at local levels.

The aim is to establish semi-autonomous community 'hubs', similar to those already existing in areas like Ryde, West Wight, Ventnor and Pan, throughout the Island. The nature of the hubs will vary, depending on the needs and resources of each area.

EVERYONE HAS THEIR OWN STRENGTHS, PASSIONS AND CAPABILITIES

BUILDING STRONG COMMUNITIES

We promote and encourage connections, developments and contributions by individuals and the community. By spending time identifying the strengths, passions and capabilities of individuals, services and places we support communities to help themselves and create local solutions.

Pan Together providing Christmas Lunch



Stepping Stones Homelessness prevention program



Our Place Mindfulness Coloring

Ventnor Community Shed

INDIVIDUALS - EVERYONE HAS STRENGTHS, PASSIONS & CAPABILITIES.
Everyone within our communities has their own skills, knowledge and passions. Living Well & Early Help identifies, encourages and nurtures individuals to utilise them. Deficit approach define communities and individuals in negative terms. An Asset approach accentuates positive capability to identify problems and activate solutions.

SERVICES - PEOPLE ORGANISED AROUND ASSETS.
Services are generally professionals or paid services who are structurally organised. They include government agencies and private business, as well as schools, etc. They can all be valuable resources. The assets of these institutions help the community capture valuable resources and establish a sense of civic responsibility.

PLACE - PEOPLE LIVE WHERE THEY LIVE FOR A REASON.
Land, buildings, heritage, public and green spaces are all examples of assets of the community. Individuals tend to be in a specific place for a specific reason. The people living in a community are most likely to know what its strengths are and how to utilise them.

CONNECTION - PEOPLE SUPPORTING PEOPLE.
Small informal groups of people, such as clubs, groups and common interest activities are critical to the delivery of the Living Well and Early Help Service. They don't need complicated processes. They are just coming together around a common interest of their individual choice.

VISIBILITY - BEING PART OF THE COMMUNITY.
The Living Well & Early Help workers are based within the community working in agile ways within defined localities finding spaces within community hubs, libraries, cafes etc. People should be able to approach workers individually as well as being referred in by any person or service. The Living Well & Early Help service supports people to develop their own solutions and ways of achieving their best possible lives, drawing on family and community resources, before considering commissioned or statutory services. Living Well and Early Help workers invest time in building relationships and understanding what a person's idea of their best life is. It also helps people to develop and build their own capacity and connections, so that they can stay strong and independent.

DEVELOPMENT - INDIVIDUALS CONNECT INTO A COMMUNITY.
Living Well and Early Help recognises that the exchange between people sharing their passion, gifts, skills and assets creates connections, and these connections are a vital asset to the community. It takes time to find out about individuals; this is normally done through building relationships, person by person. The social relationships, networks and trust form the social capital of a community. The Living Well and Early Help service knows the value of these assets and the importance of building relationships to increase the social capital within each unique community.



WAVES OF WELLNESS - SUICIDE PREVENTION PROJECT

reception@lweh.org.uk 01983 240732