

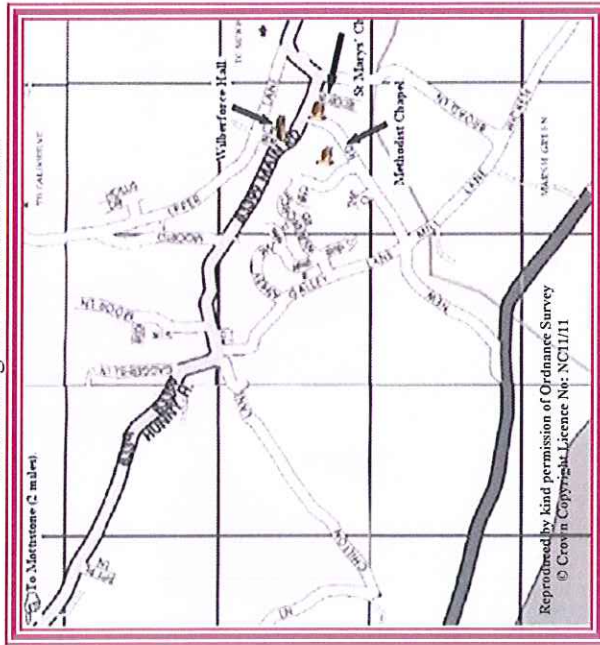
This event has been made possible thanks to the work of many people.



We hope you enjoy your time in our villages. A big "Thank you" to all our exhibitors, and to the many helpers who have worked tirelessly to make the Festival a success yet again.

All proceeds will go to local and national charities. If you wish to enter a tree next year,

please leave your name/contact address/phone number with a steward, and we will be pleased to add you to our mailing list for next autumn.



Refreshments daily In the Methodist Church.

On Thurs 8th, Fri 9th, Sat 10th in the Wilberforce Hall. In the Scout Centre on Sun 11th and also

NB. Sat 10th from 12 - 2pm - Ploughman's Lunches

Horse Drawn Carriage Rides.

Traidcraft Stall.

Craft & Gift Fairs

Mini Market.

Cake Raffle

Wheelchair access at all venues - limited access at Mottistone

Parking at Mottistone available in National Trust Car Park.

NB. Trees will remain in Brightstone Church and the Methodist Church until after Christmas.

We wish all visitors a very peaceful Christmas. Thank you for your support

Christmas Celebrations in our Villages.

Wednesday December 7th:

7.00pm Hospice Tree Lighting & Carols - Brightstone Church with members of Earl Mountbatten Hospice.

Thursday December 8th:

3.30pm Lighting of the "Tree of Christian Unity" by The High Sheriff of the Isle of Wight, Susie Sheldon. Carols with Chale Choir & Brightstone Schoolchildren - Methodist Church

Friday December 9th:

10.00am - 4.00pm Christmas Gift & Craft Fair - Scout Centre
4.00pm Carols with "The Village Society" - Wilberforce Hall

Saturday December 10th:

1.00 - 4.00pm Brightstone School Christmas Gift & Craft Fair - at the School
2.30pm - 3.30pm Credorer Ensemble - Brightstone Church
4.30pm - Carols and crib blessing - Mottistone Church

Sunday December 11th:

2.30pm - 4pm "Rhymes & Chimes of Christmas" - Brightstone Church
7.00pm Stars of Wonder Concert - Brightstone Church
A Musical Concert full of festive flavour and Variety in aid of island charity "Love Russia"

Tuesday December 13th & Wednesday December 14th

1.30 - 2.30pm Brightstone School - "Hosanna Rock" - Brightstone Church.

Sunday December 18th:

10.15am BIG Worship followed by

10.45am Holy Communion - Brightstone Church

7.00pm Mission to Seafarers Carol Concert - Brightstone Church

Saturday, Christmas Eve

5.00pm Christingle Service - Brook Church

6.30pm Family Carol Service - Brightstone Church

8.00pm The First Christmas Communion - Chale Church

11.30pm Midnight Mass - Mottistone and Shorwell Churches

Sunday Christmas Day

10.00am Family Communion - Brightstone Church

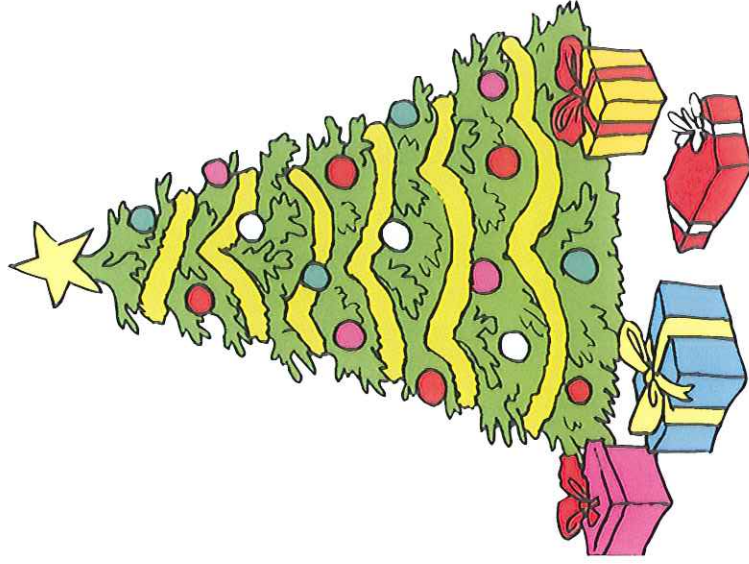
10.30am - Family Communion - Shorwell Church

10.30am Family Service - Methodist Church

"For God so loved the world, that He gave His only begotten Son, that whoever believes in Him shall not perish, but have eternal life"

WELCOME

to the 15th Brightstone Christmas Tree Festival. 8th - 11th December 2011



The Churches and Residents of Brightstone, and Mottistone

extend to you a very warm welcome to our Community.

St. Mary's Church, Brighstone

- 1st Brighstone Beavers
- 1st Brighstone & Shorwell Brownies
- 1st Brighstone Cubs
- 1st Brighstone Guides
- 1st Brighstone Scouts
- Action for Children
- Amnesty International
- Brighstone Christian Aid Group
- Brighstone Diamond Jubilee Street Party
- Brighstone Grange Residential Home
 - Brighstone Library
 - Brighstone Post Office
 - Brighstone Primary School
 - Brighstone Women's Institute
 - Christ the King College
 - Cameo Emily's Tree
 - Earl Mountbatten Hospice
 - Friendship Force
 - Freshwater Flower Club
 - Headway IoW
 - Island Cool
 - IoW Caledonian Society
 - IoW Guild Spinners, Weavers and Dyers
 - IoW Motor Neurone Association
 - Isle of Wight Pearl
 - IoW Society for the Blind
 - IoW Street Pastors
 - IoW Youth Trust
 - Juba Link – St Mary's Hospital
 - Love Russia
 - Monday Prayer Group
 - Multiple Sclerosis Society
 - Mother's Union
 - Naiton Wednesday Club
 - Parkinson's Disease Society
 - Phoenix Project Medina Centre Special Needs
 - Rock Solid Tree
 - Mountbatten Nurses
 - Seven Acres
 - Sq2Sq Charity Cycling Challenge
 - St Mary's Handbells
 - St Mary's Sunday School (Kid's Sunday Club)
 - The Children's Society
 - The New Avenue Group
 - The Royal British Legion
 - Vectis Quilters
 - The Wells Family Tree
 - West Wight Floral Art Society
 - Vectis Astronomical Society

FESTIVAL EXHIBITORS

"She wrapped him in cloths and placed him in a manger, because there was no room for them in the inn".



Brighstone Methodist Church

- Age Concern
- Marian Baggotts' Tree
- Wight Vintage
- 1st Brighstone & Shorwell Rainbow Guides
- Brighstone Methodist Church
- Brighstone Play Group
- Brighstone Social Club
- Brighstone Village Art Group
- Bright Hour Fellowship
- Freshwater Central WI
- The Riverside Centre
- Teddies for Tragedies
- The Cuddly Bears Club
- The Poetry Tree – Brighstone School
- Open Doors - Brighstone Methodists
- Work Skill Tree
- Sustainable Work Skills
- And outside ...
- St Mary's Church, Brighstone - The Hospice Tree
- Courtesy of J.R.Buckett & Sons
- The Methodist Church -The Tree of Joy
- Courtesy of Isle of Wight Pearl
- The Wilberforce Hall - The Parish Council Tree
- Courtesy of Brighstone Parish Council
- Mottistone Church – Courtesy of Shide Trees
- St Mary's Church, Brighstone - Bell tower display
- Courtesy of Brighstone Bellingers

A big "Thank you" to all our sponsors

- J.R.Buckett & Sons; National Trust;
- Shide Trees (Thompsons Nurseries); Bookers;
- IoW County Press; Orchard Bros (Freshwater);
- Harvey's of Yarmouth; Brighstone Holiday Centre; M&S;
- The IoW Beacon; The Co-op; IoW Pearl; Waitrose;
- Regent Special Occasion Carriages
- Centrepiece Cake Designs; Lyn's Island Pantry;
- Brighstone Parish Council; Brighstone Horticultural Society;
- The Village Society for decorating the Wilberforce Hall,
- West Wight Rotary Club for decorating the Hall Stage;
- & Brighstone Beavers for decorating Mottistone Church.
- With apologies to anyone we have inadvertently overlooked.

Mottistone Church

- Aussie Tree
- Brook & Mottistone Churchwardens
- Carisbrooke College
- Chessell Potteries
- IoW College Pathways Students
- Little Friends Toddlers Group
- National Trust Mottistone Manor
- Niton Handbells
- Relate
- Saturday Club for Deaf Children
- Scoliosis Association (UK)
- St Saviour's Church Choir
- The Diabetes Centre
- The Historical Association
- The Gideons International
- The Poetry Tree
- The Royal National Lifeboat Institution
- The Stanley Family Tree
- Ventnor Lions Club
- West Wight Quilters
- The Wilberforce Hall**
- 1-2-1 Hairdressing
- Antique Clocks
- Brighstone Lawn Tennis Club
- Brighstone Village Society
- Canine Partners
- Castlebooks
- Donna's Craft Tree
- Freshwater Lace Group
- Isle of Wight Heart Care Club
- Isle of Wight Zoo
- Kay & Andrew Cooper's Tree
- Knitted Christmas Scene
- Lacemakers of the Wight
- Medina House School
- Patrick Hayes' Tree
- RSPCA
- The Food Hamper
- The Horticultural Society
- The Hospice Sales Tree
- The Island Storytellers
- Tony & Margaret Stevenson
- Totland Sewing Group
- Warren Farm Tea Rooms
- Wednesday Craft Fayre
- Wessex Cancer Trust Charity Shop
- Wight Squirrel Project